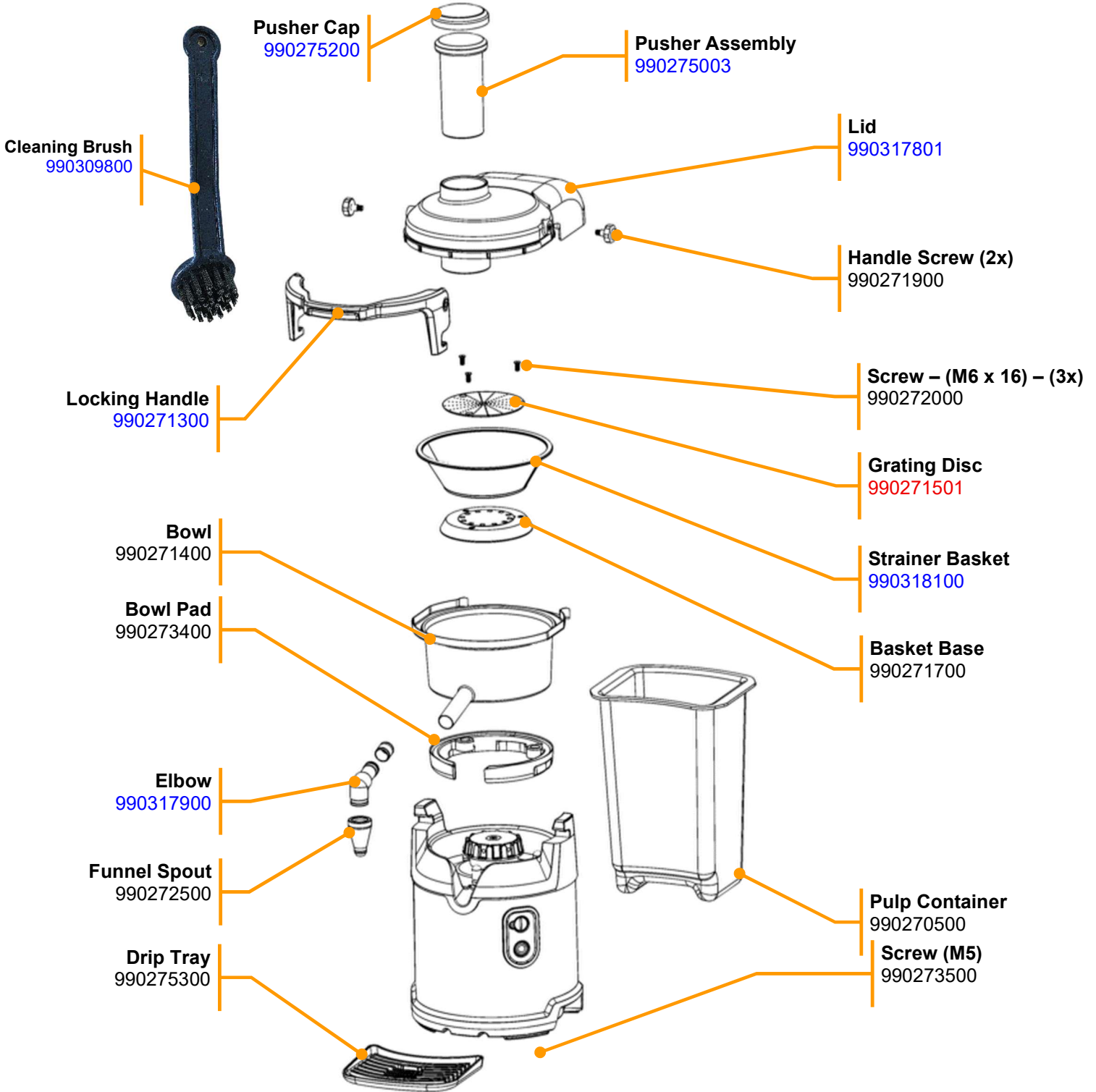


Parts & Accessories Diagram – Model HJE960 – SERIES E – Industrial Relays

PROPRIETARY RIGHTS NOTICE This document and all information contained within it is the property of Hamilton Beach Brands, Inc. (HBB). It is confidential and proprietary and has been provided to you for a limited purpose. It must be returned or destroyed upon request. Disclosure, reproduction or use of this document and any information contained within it, in full or in part, for any purpose is forbidden without the prior written consent of HBB. No photographs may be taken of any article fabricated or assembled from this document without the prior written consent of HBB.

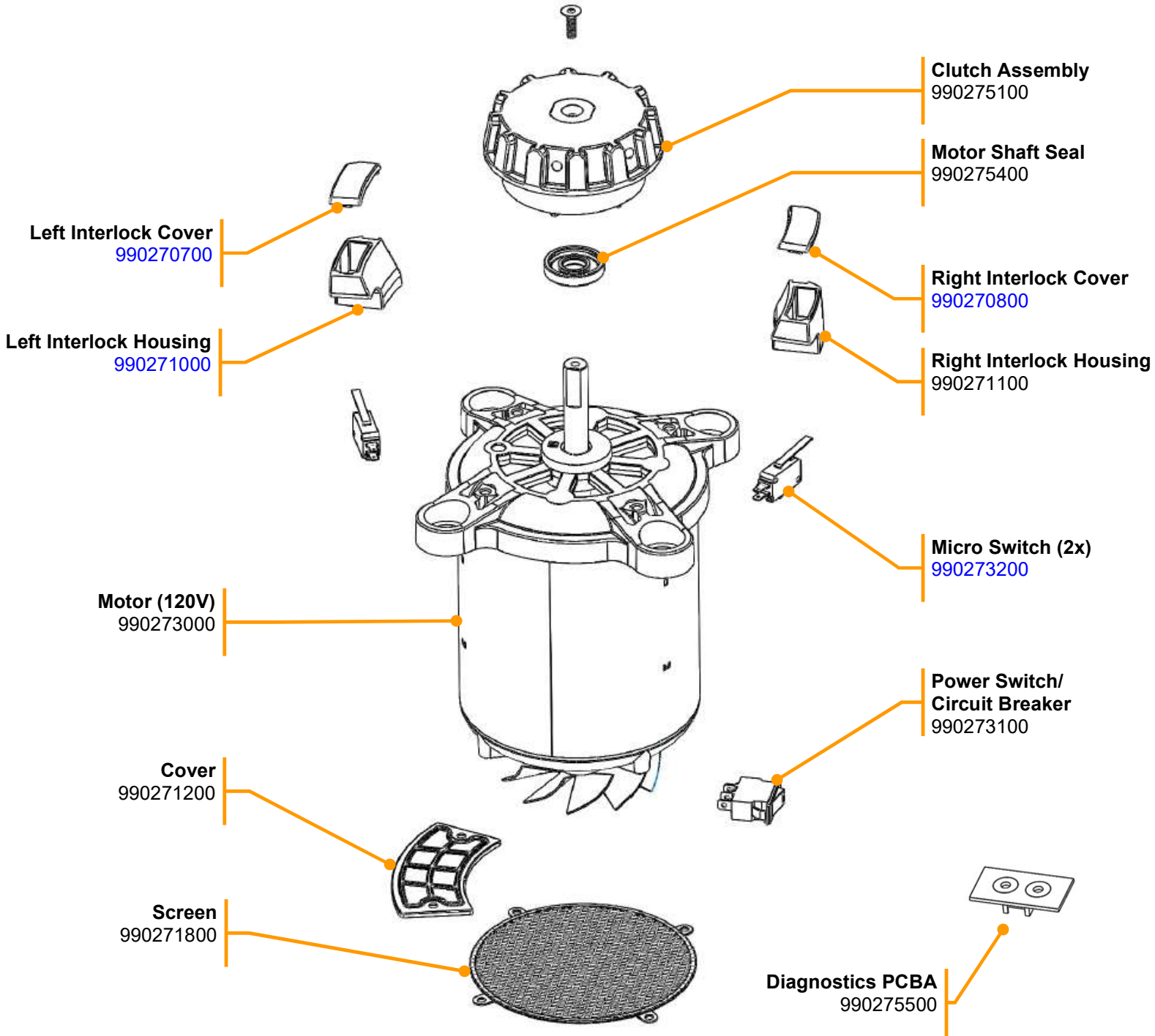
Replacement Parts




 Hamilton Beach 4421 Waterfront Drive Glen Allen, VA 23060	Revision	Replace 990271500 with 990271501				Rev. Date:
	Description:	Request #:	DOC15402	Page:	1 of 22	17-Apr-2026
				Document #:	540102200	Rev: B

Parts & Accessories Diagram – Model HJE960 – SERIES E – Industrial Relays

PROPRIETARY RIGHTS NOTICE This document and all information contained within it is the property of Hamilton Beach Brands, Inc. (HBB). It is confidential and proprietary and has been provided to you for a limited purpose. It must be returned or destroyed upon request. Disclosure, reproduction or use of this document and any information contained within it, in full or in part, for any purpose is forbidden without the prior written consent of HBB. No photographs may be taken of any article fabricated or assembled from this document without the prior written consent of HBB.

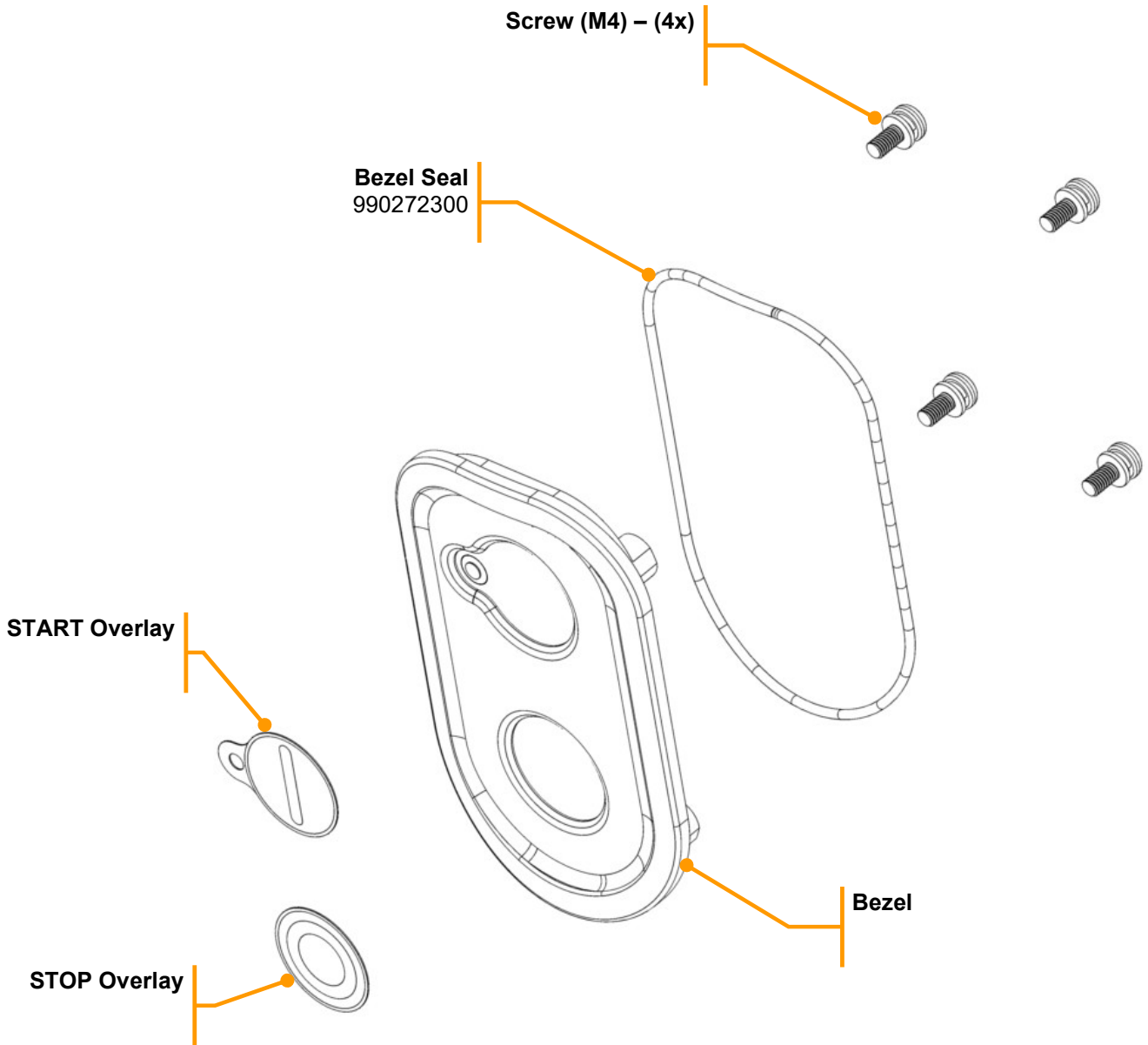



 4421 Waterfront Drive Glen Allen, VA 23060	Revision	Replace 990271500 with 990271501				Rev. Date:	
	Description:					17-Apr-2026	
	Request #:	DOC15402	Page:	2 of 22	Document #:	540102200	Rev:

Parts & Accessories Diagram – Model **HJE960** – SERIES E – Industrial Relays

PROPRIETARY RIGHTS NOTICE This document and all information contained within it is the property of Hamilton Beach Brands, Inc. (HBB). It is confidential and proprietary and has been provided to you for a limited purpose. It must be returned or destroyed upon request. Disclosure, reproduction or use of this document and any information contained within it, in full or in part, for any purpose is forbidden without the prior written consent of HBB. No photographs may be taken of any article fabricated or assembled from this document without the prior written consent of HBB.

990273700 Bezel Service Kit – Includes all components as pictured below

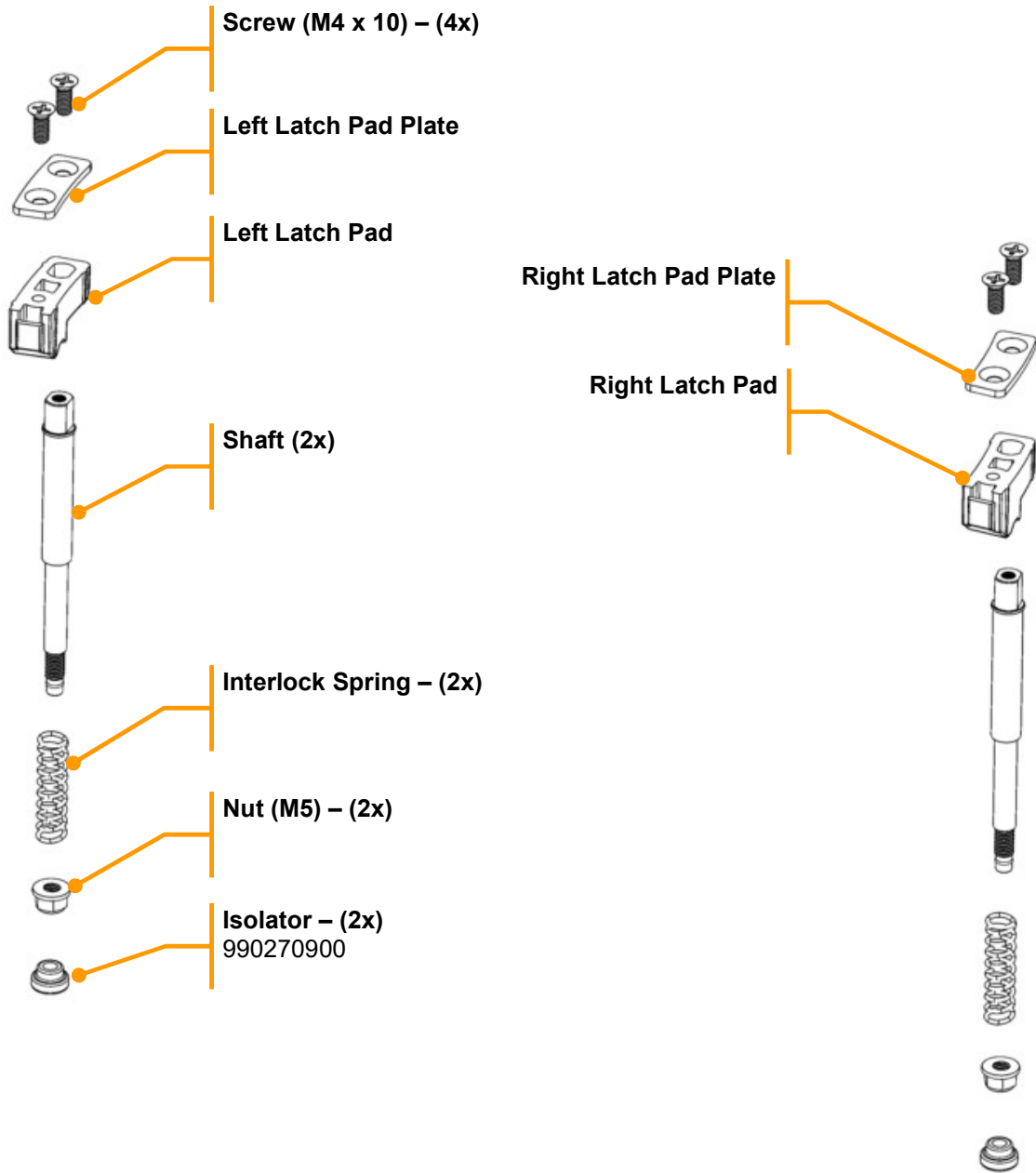



 <p>Hamilton Beach 4421 Waterfront Drive Glen Allen, VA 23060</p>	Revision	Replace 990271500 with 990271501				Rev. Date:		
	Description:	Request #:	DOC15402	Page:	3 of 22	Document #:	540102200	Rev:

Parts & Accessories Diagram – Model **HJE960** – SERIES E – Industrial Relays

PROPRIETARY RIGHTS NOTICE This document and all information contained within it is the property of Hamilton Beach Brands, Inc. (HBB). It is confidential and proprietary and has been provided to you for a limited purpose. It must be returned or destroyed upon request. Disclosure, reproduction or use of this document and any information contained within it, in full or in part, for any purpose is forbidden without the prior written consent of HBB. No photographs may be taken of any article fabricated or assembled from this document without the prior written consent of HBB.

990273800 Latch Service Kit – Includes all components as pictured below

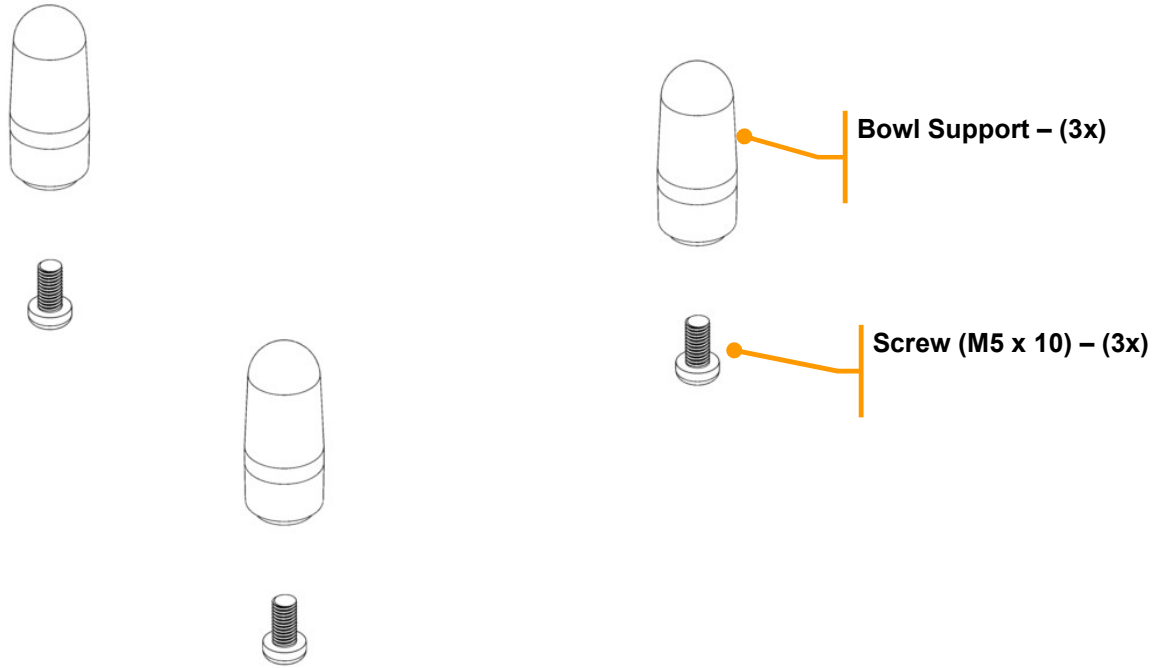



 <p>Hamilton Beach 4421 Waterfront Drive Glen Allen, VA 23060</p>	Revision	Replace 990271500 with 990271501				Rev. Date:		
	Description:	Request #:	DOC15402	Page:	4 of 22	Document #:	540102200	Rev:

Parts & Accessories Diagram – Model **HJE960** – SERIES E – Industrial Relays

PROPRIETARY RIGHTS NOTICE This document and all information contained within it is the property of Hamilton Beach Brands, Inc. (HBB). It is confidential and proprietary and has been provided to you for a limited purpose. It must be returned or destroyed upon request. Disclosure, reproduction or use of this document and any information contained within it, in full or in part, for any purpose is forbidden without the prior written consent of HBB. No photographs may be taken of any article fabricated or assembled from this document without the prior written consent of HBB.

990273900 Bowl Support Service Kit – Includes all components as pictured below

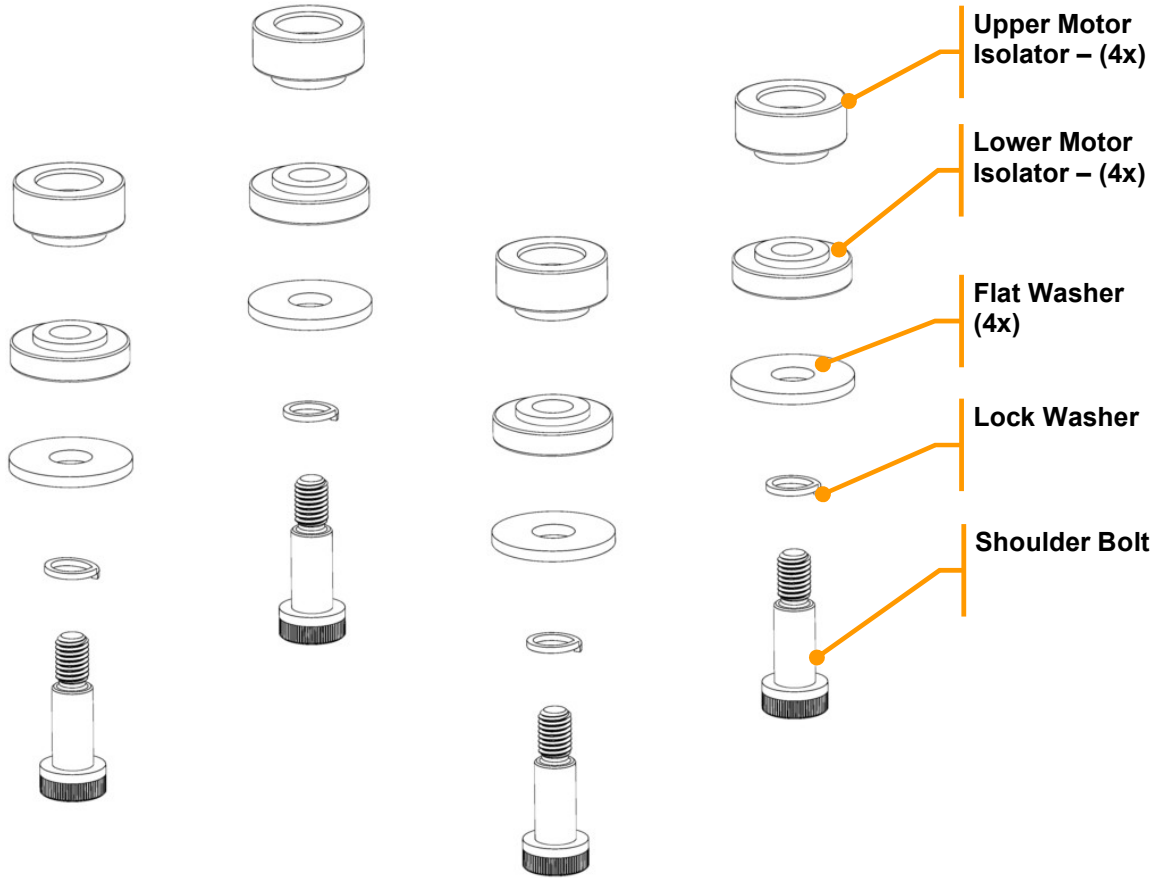



 <p>Hamilton Beach 4421 Waterfront Drive Glen Allen, VA 23060</p>	Revision	Replace 990271500 with 990271501				Rev. Date:		
	Description:	Request #:	DOC15402	Page:	5 of 22	Document #:	540102200	Rev:

Parts & Accessories Diagram – Model **HJE960** – SERIES E – Industrial Relays

PROPRIETARY RIGHTS NOTICE This document and all information contained within it is the property of Hamilton Beach Brands, Inc. (HBB). It is confidential and proprietary and has been provided to you for a limited purpose. It must be returned or destroyed upon request. Disclosure, reproduction or use of this document and any information contained within it, in full or in part, for any purpose is forbidden without the prior written consent of HBB. No photographs may be taken of any article fabricated or assembled from this document without the prior written consent of HBB.

990273900 Bowl Support Service Kit – Includes all components as pictured below

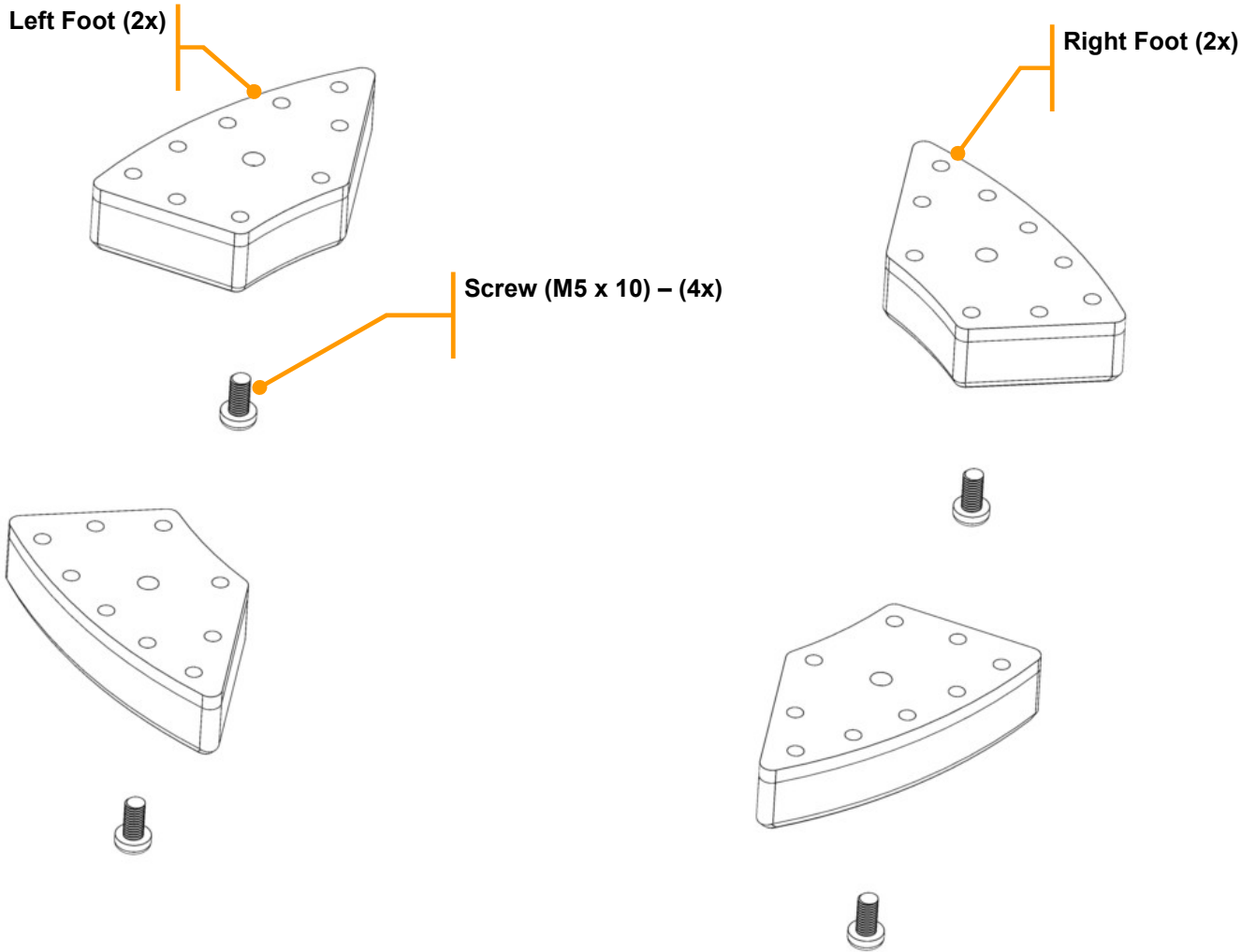



 <p>Hamilton Beach 4421 Waterfront Drive Glen Allen, VA 23060</p>	Revision	Replace 990271500 with 990271501				Rev. Date:		
	Description:	Request #:	DOC15402	Page:	6 of 22	Document #:	540102200	Rev:

Parts & Accessories Diagram – Model **HJE960** – SERIES E – Industrial Relays

PROPRIETARY RIGHTS NOTICE This document and all information contained within it is the property of Hamilton Beach Brands, Inc. (HBB). It is confidential and proprietary and has been provided to you for a limited purpose. It must be returned or destroyed upon request. Disclosure, reproduction or use of this document and any information contained within it, in full or in part, for any purpose is forbidden without the prior written consent of HBB. No photographs may be taken of any article fabricated or assembled from this document without the prior written consent of HBB.

990274101 Rubber Foot Kit – Includes all components as pictured below

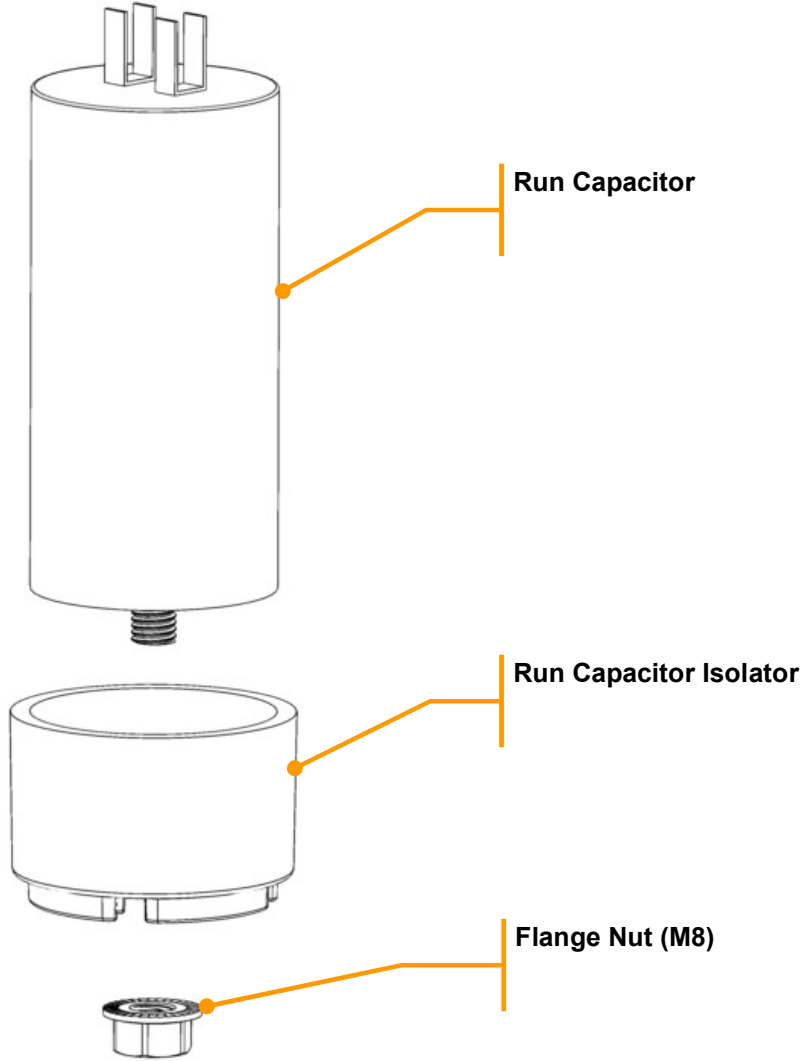



 <p>Hamilton Beach 4421 Waterfront Drive Glen Allen, VA 23060</p>	Revision	Replace 990271500 with 990271501				Rev. Date:		
	Description:	Request #:	DOC15402	Page:	7 of 22	Document #:	540102200	Rev:

Parts & Accessories Diagram – Model HJE960 – SERIES E – Industrial Relays

PROPRIETARY RIGHTS NOTICE This document and all information contained within it is the property of Hamilton Beach Brands, Inc. (HBB). It is confidential and proprietary and has been provided to you for a limited purpose. It must be returned or destroyed upon request. Disclosure, reproduction or use of this document and any information contained within it, in full or in part, for any purpose is forbidden without the prior written consent of HBB. No photographs may be taken of any article fabricated or assembled from this document without the prior written consent of HBB.

990274200 Run Capacitor Kit – Includes all components as pictured below

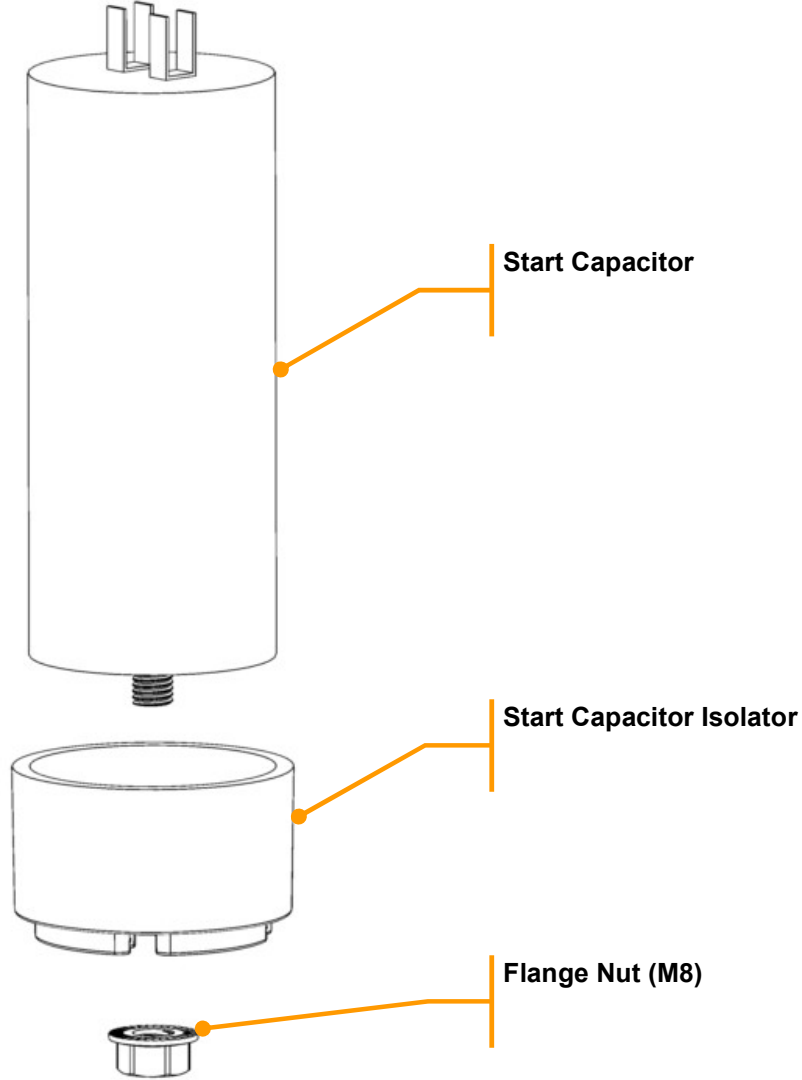



 <p>Hamilton Beach 4421 Waterfront Drive Glen Allen, VA 23060</p>	Revision	Replace 990271500 with 990271501				Rev. Date:	
	Description:	Request #:	DOC15402	Page:	8 of 22	Document #:	17-Apr-2026
					540102200	Rev:	B

Parts & Accessories Diagram – Model HJE960 – SERIES E – Industrial Relays

PROPRIETARY RIGHTS NOTICE This document and all information contained within it is the property of Hamilton Beach Brands, Inc. (HBB). It is confidential and proprietary and has been provided to you for a limited purpose. It must be returned or destroyed upon request. Disclosure, reproduction or use of this document and any information contained within it, in full or in part, for any purpose is forbidden without the prior written consent of HBB. No photographs may be taken of any article fabricated or assembled from this document without the prior written consent of HBB.

990274300 Start Capacitor Kit – Includes all components as pictured below

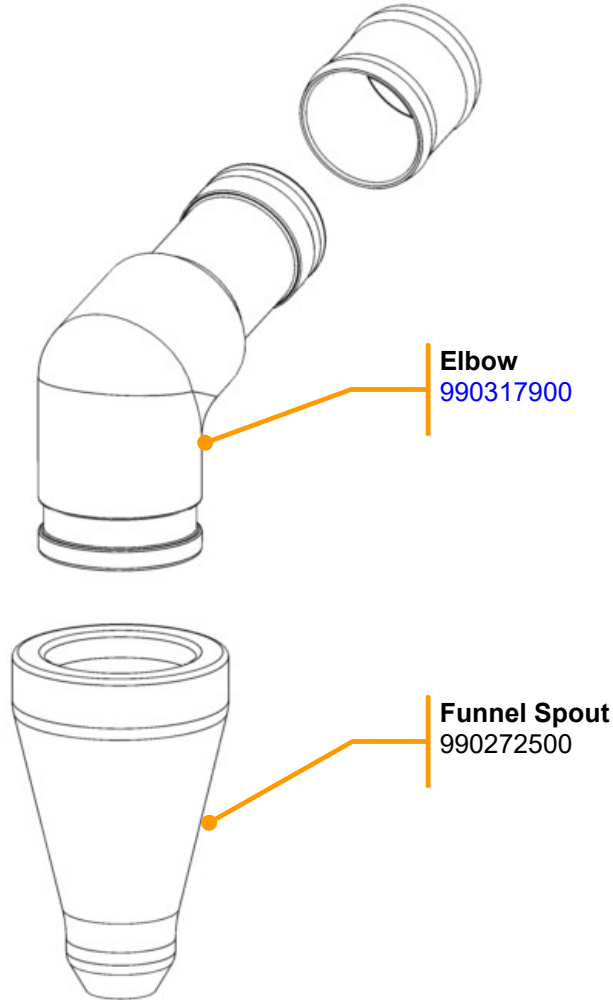



 <p>Hamilton Beach 4421 Waterfront Drive Glen Allen, VA 23060</p>	Revision	Replace 990271500 with 990271501				Rev. Date:	
	Description:	Request #:	DOC15402	Page:	9 of 22	Document #:	540102200
						Rev:	B

Parts & Accessories Diagram – Model HJE960 – SERIES E – Industrial Relays

PROPRIETARY RIGHTS NOTICE This document and all information contained within it is the property of Hamilton Beach Brands, Inc. (HBB). It is confidential and proprietary and has been provided to you for a limited purpose. It must be returned or destroyed upon request. Disclosure, reproduction or use of this document and any information contained within it, in full or in part, for any purpose is forbidden without the prior written consent of HBB. No photographs may be taken of any article fabricated or assembled from this document without the prior written consent of HBB.

990318000 Spout Kit – Includes all components as pictured below

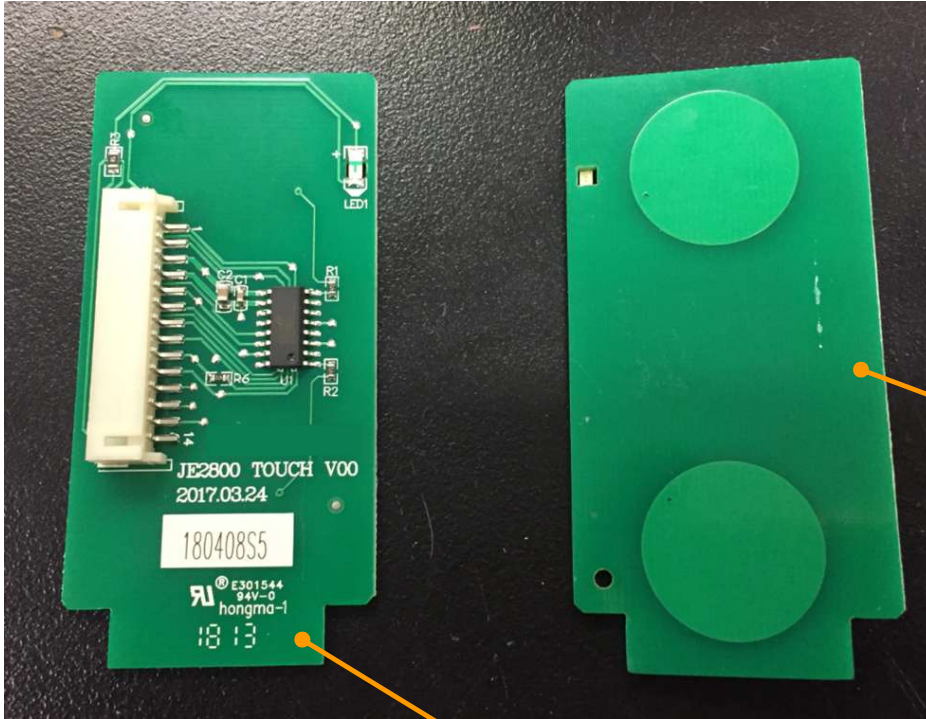


 <p>Hamilton Beach 4421 Waterfront Drive Glen Allen, VA 23060</p>	Revision	Replace 990271500 with 990271501				Rev. Date:	
	Description:	Request #:	DOC15402	Page:	10 of 22	Document #:	540102200
						Rev:	B

Parts & Accessories Diagram – Model HJE960 – SERIES E – Industrial Relays

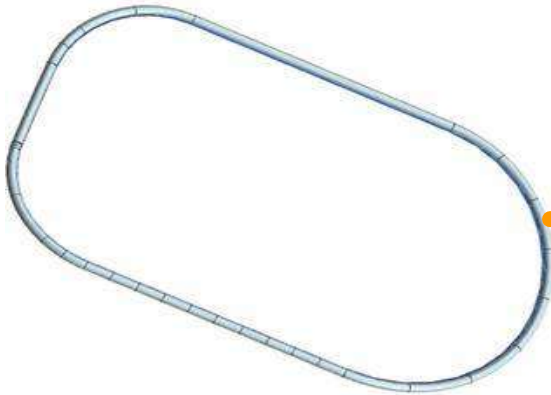
PROPRIETARY RIGHTS NOTICE This document and all information contained within it is the property of Hamilton Beach Brands, Inc. (HBB). It is confidential and proprietary and has been provided to you for a limited purpose. It must be returned or destroyed upon request. Disclosure, reproduction or use of this document and any information contained within it, in full or in part, for any purpose is forbidden without the prior written consent of HBB. No photographs may be taken of any article fabricated or assembled from this document without the prior written consent of HBB.

990308900 Start/Stop PCBA Kit – Includes all components as pictured below

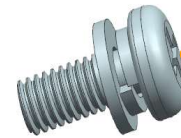


Start/Stop PCBA
Opposite side view


Start/Stop Touch PCBA w/ 14pin Connector
120V version



Bezel Seal



Screw (M4)
(Qty. 4)

 4421 Waterfront Drive Glen Allen, VA 23060	Revision	Replace 990271500 with 990271501				Rev. Date:		
	Description:	Request #:	DOC15402	Page:	11 of 22	Document #:	540102200	Rev:

Parts & Accessories Diagram – Model HJE960 – SERIES E – Industrial Relays

PROPRIETARY RIGHTS NOTICE This document and all information contained within it is the property of Hamilton Beach Brands, Inc. (HBB). It is confidential and proprietary and has been provided to you for a limited purpose. It must be returned or destroyed upon request. Disclosure, reproduction or use of this document and any information contained within it, in full or in part, for any purpose is forbidden without the prior written consent of HBB. No photographs may be taken of any article fabricated or assembled from this document without the prior written consent of HBB.


990274600 Cord Kit (120V) – Includes all components as pictured below



Cord (120V)
990273300



Strain Relief Grommet
990273600

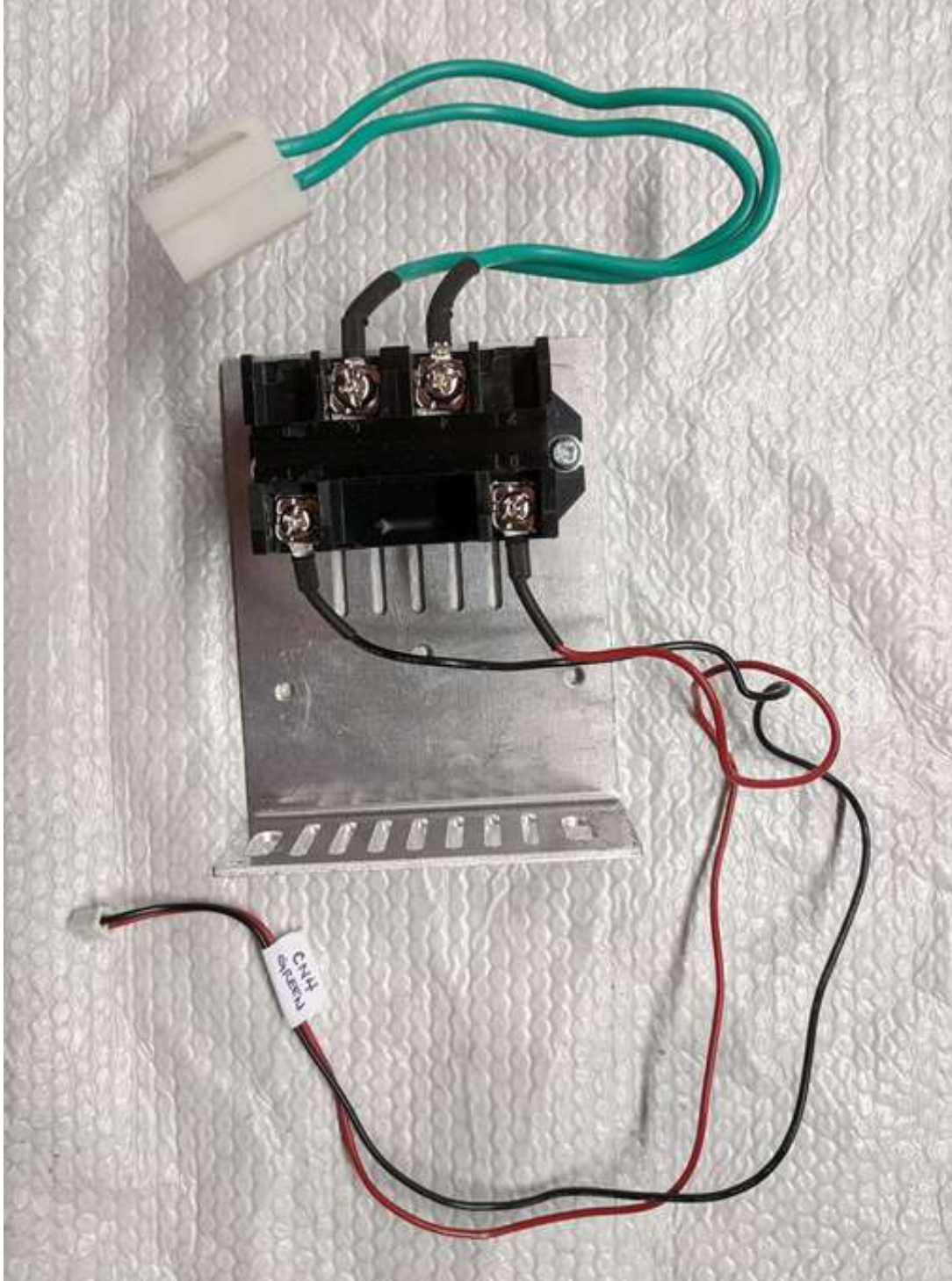
 4421 Waterfront Drive Glen Allen, VA 23060	Revision	Replace 990271500 with 990271501				Rev. Date:
	Description:					17-Apr-2026
Request #:	DOC15402	Page:	12 of 22	Document #:	540102200	Rev: B

Parts & Accessories Diagram – Model [HJE960](#) – SERIES E – Industrial Relays

PROPRIETARY RIGHTS NOTICE This document and all information contained within it is the property of Hamilton Beach Brands, Inc. (HBB). It is confidential and proprietary and has been provided to you for a limited purpose. It must be returned or destroyed upon request. Disclosure, reproduction or use of this document and any information contained within it, in full or in part, for any purpose is forbidden without the prior written consent of HBB. No photographs may be taken of any article fabricated or assembled from this document without the prior written consent of HBB.

Industrial Relay – Series E – 120V Components

1. Single Relay (Brake) Assembly – 990374200

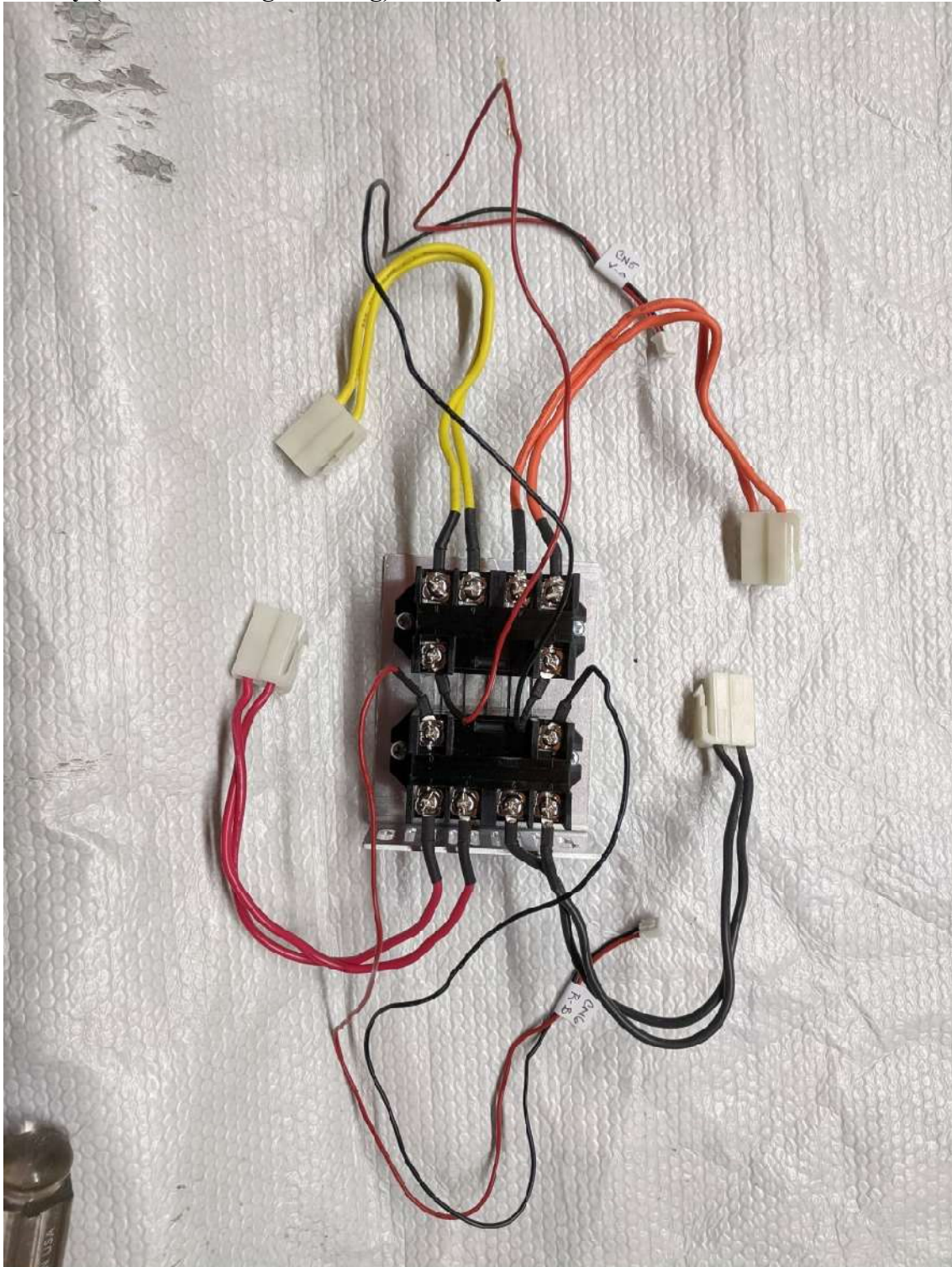



Hamilton Beach 4421 Waterfront Drive Glen Allen, VA 23060	Revision	Replace 990271500 with 990271501				Rev. Date:		
	Description:					17-Apr-2026		
	Request #:	DOC15402	Page:	13 of 22	Document #:	540102200	Rev:	B

Parts & Accessories Diagram – Model **HJE960** – SERIES E – Industrial Relays

PROPRIETARY RIGHTS NOTICE This document and all information contained within it is the property of Hamilton Beach Brands, Inc. (HBB). It is confidential and proprietary and has been provided to you for a limited purpose. It must be returned or destroyed upon request. Disclosure, reproduction or use of this document and any information contained within it, in full or in part, for any purpose is forbidden without the prior written consent of HBB. No photographs may be taken of any article fabricated or assembled from this document without the prior written consent of HBB.

2. Dual Relay (Motor Starting/Running) Assembly – 990374300

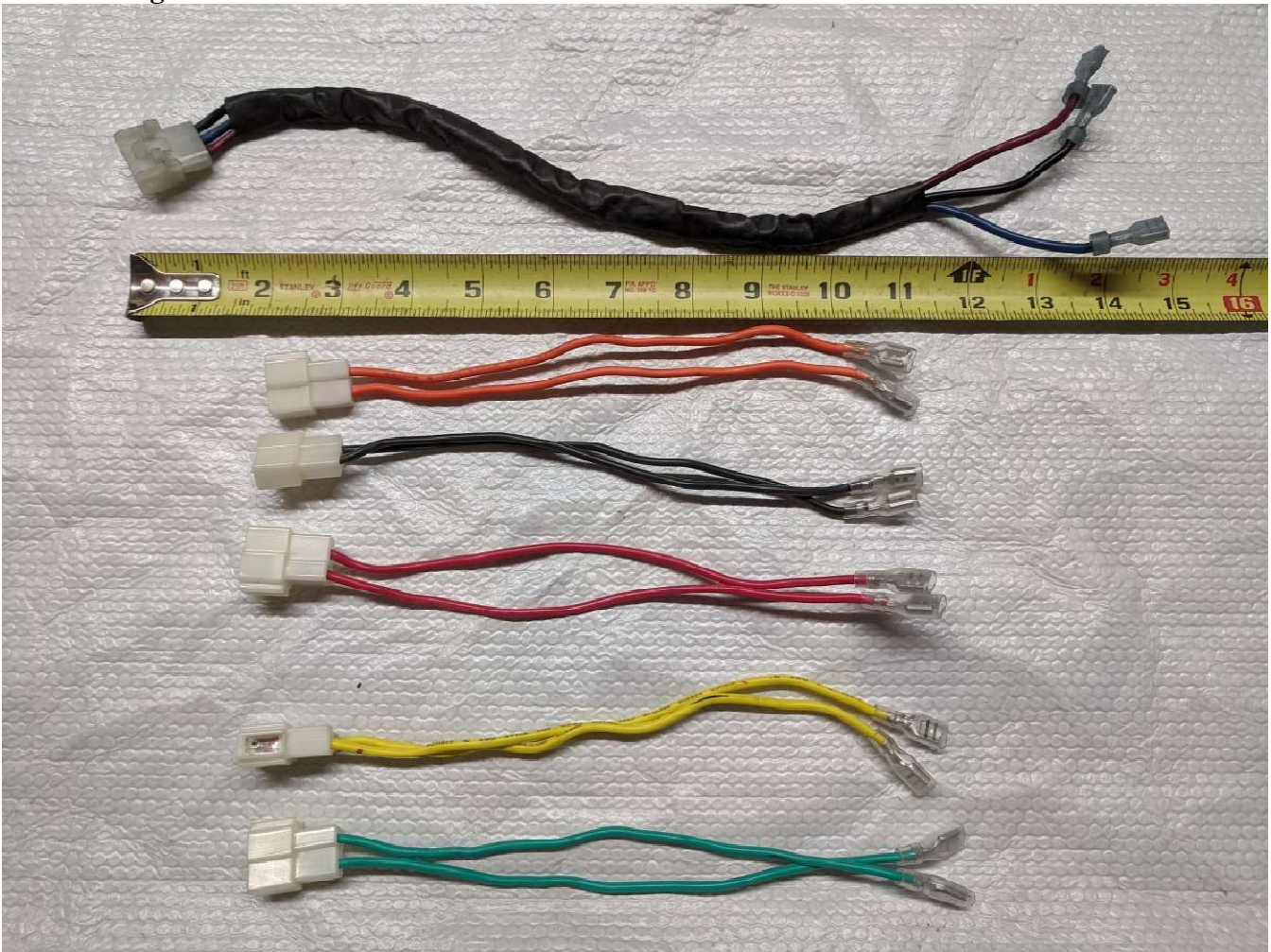



 <p>Hamilton Beach 4421 Waterfront Drive Glen Allen, VA 23060</p>	Revision	Replace 990271500 with 990271501				Rev. Date:	
	Description:	Request #:	DOC15402	Page:	14 of 22	Document #:	540102200
						Rev:	B

Parts & Accessories Diagram – Model **HJE960** – SERIES E – Industrial Relays

PROPRIETARY RIGHTS NOTICE This document and all information contained within it is the property of Hamilton Beach Brands, Inc. (HBB). It is confidential and proprietary and has been provided to you for a limited purpose. It must be returned or destroyed upon request. Disclosure, reproduction or use of this document and any information contained within it, in full or in part, for any purpose is forbidden without the prior written consent of HBB. No photographs may be taken of any article fabricated or assembled from this document without the prior written consent of HBB.

3. Wiring Harness – 990374400

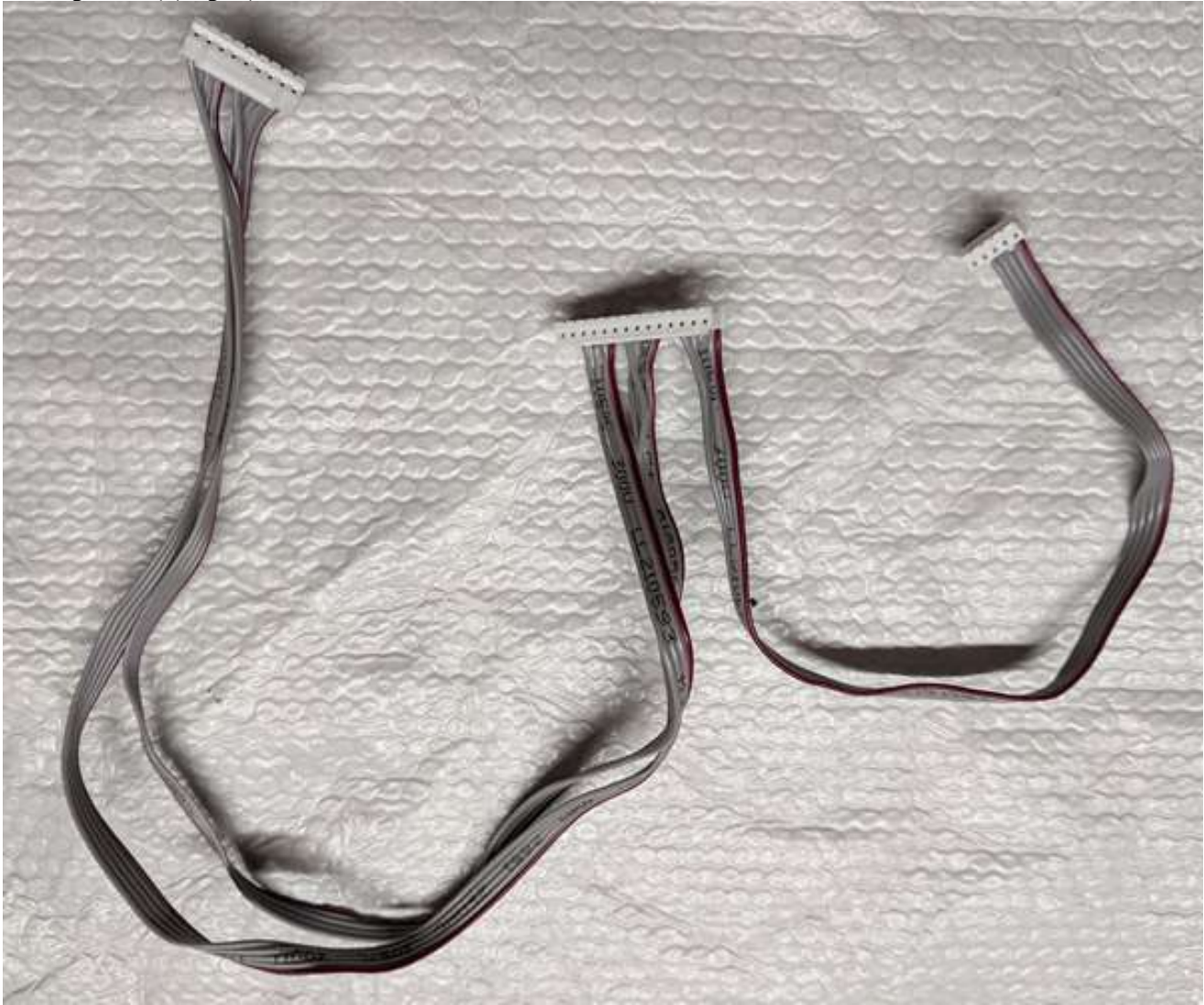



 4421 Waterfront Drive Glen Allen, VA 23060	Revision	Replace 990271500 with 990271501				Rev. Date:
	Description:					17-Apr-2026
	Request #:	DOC15402	Page:	15 of 22	Document #:	540102200
					Rev:	B

Parts & Accessories Diagram – Model HJE960 – SERIES E – Industrial Relays

PROPRIETARY RIGHTS NOTICE This document and all information contained within it is the property of Hamilton Beach Brands, Inc. (HBB). It is confidential and proprietary and has been provided to you for a limited purpose. It must be returned or destroyed upon request. Disclosure, reproduction or use of this document and any information contained within it, in full or in part, for any purpose is forbidden without the prior written consent of HBB. No photographs may be taken of any article fabricated or assembled from this document without the prior written consent of HBB.

4. Ribbon Harness – 990374500 (ribbon assembly provided with 3 connectors – (1) 14pin, (1) 9pin & (1) 5pin)

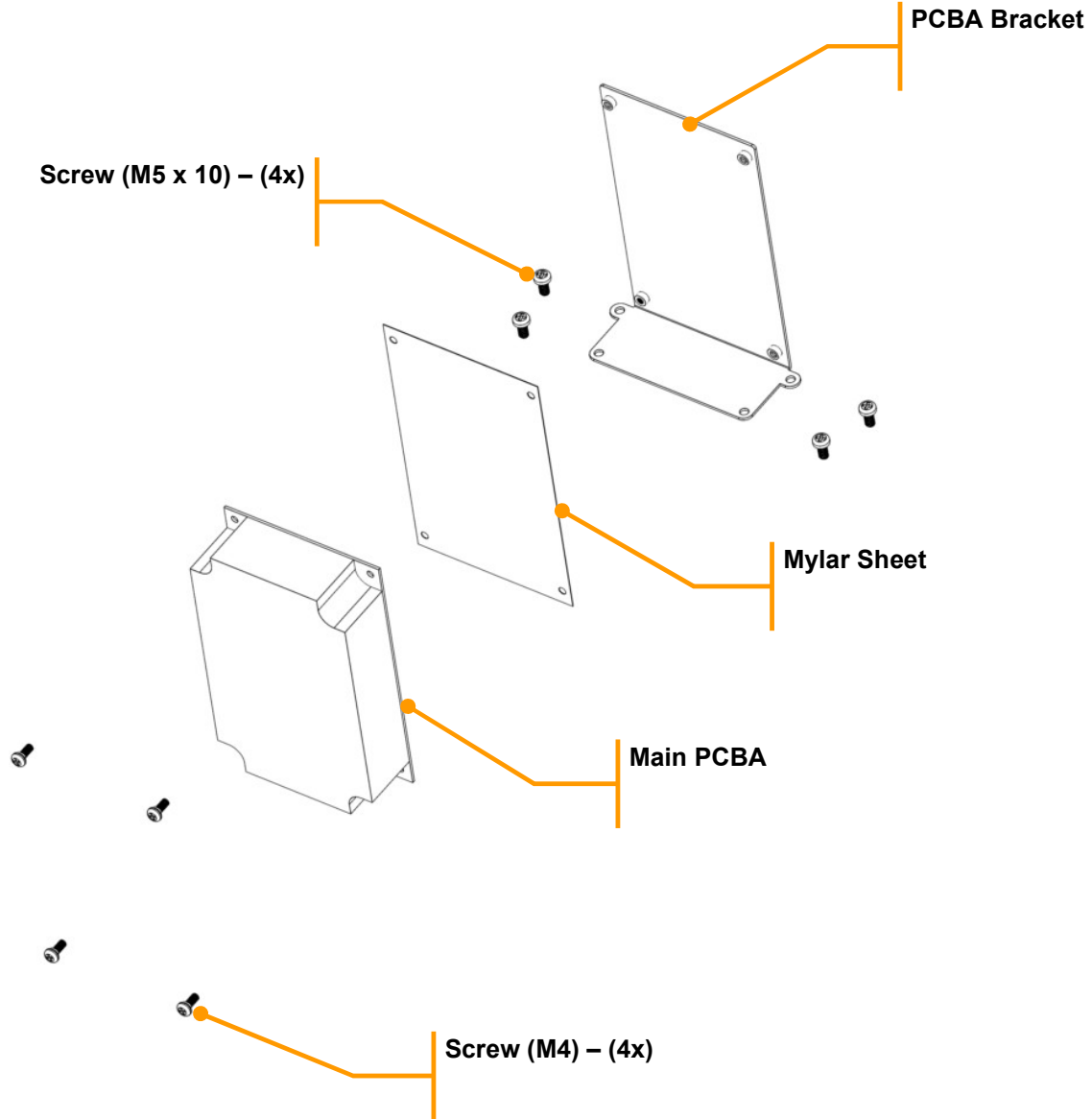



 <p>Hamilton Beach 4421 Waterfront Drive Glen Allen, VA 23060</p>	Revision	Replace 990271500 with 990271501				Rev. Date:		
	Description:					17-Apr-2026		
	Request #:	DOC15402	Page:	16 of 22	Document #:	540102200	Rev:	B

Parts & Accessories Diagram – Model HJE960 – SERIES E – Industrial Relays

PROPRIETARY RIGHTS NOTICE This document and all information contained within it is the property of Hamilton Beach Brands, Inc. (HBB). It is confidential and proprietary and has been provided to you for a limited purpose. It must be returned or destroyed upon request. Disclosure, reproduction or use of this document and any information contained within it, in full or in part, for any purpose is forbidden without the prior written consent of HBB. No photographs may be taken of any article fabricated or assembled from this document without the prior written consent of HBB.

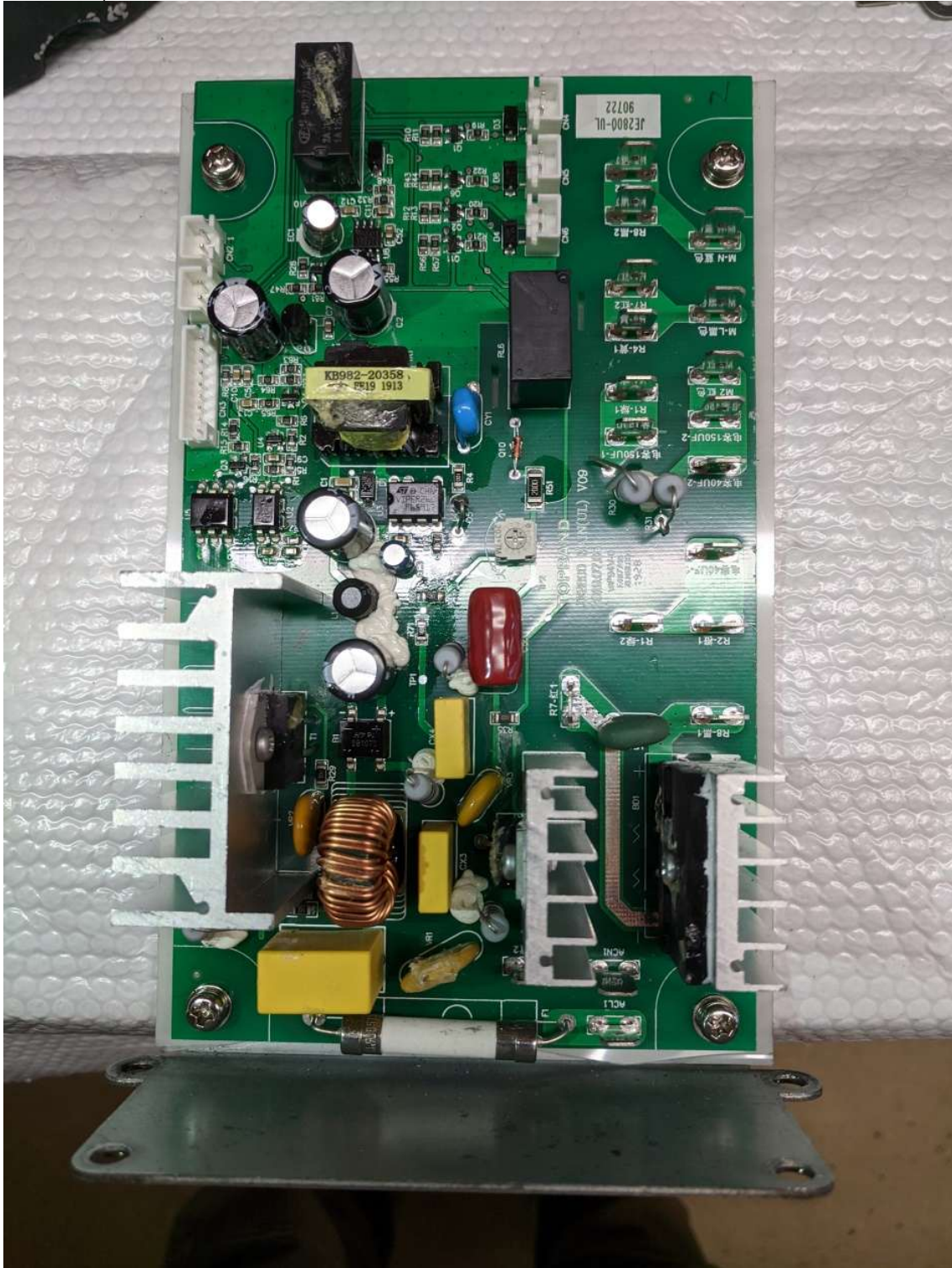
5. Main PCB Assembly - 990374000




 <p>Hamilton Beach 4421 Waterfront Drive Glen Allen, VA 23060</p>	Revision	Replace 990271500 with 990271501				Rev. Date:
	Description:					17-Apr-2026
Request #:	DOC15402	Page:	17 of 22	Document #:	540102200	Rev: B

Parts & Accessories Diagram – Model **HJE960** – SERIES E – Industrial Relays

PROPRIETARY RIGHTS NOTICE This document and all information contained within it is the property of Hamilton Beach Brands, Inc. (HBB). It is confidential and proprietary and has been provided to you for a limited purpose. It must be returned or destroyed upon request. Disclosure, reproduction or use of this document and any information contained within it, in full or in part, for any purpose is forbidden without the prior written consent of HBB. No photographs may be taken of any article fabricated or assembled from this document without the prior written consent of HBB.



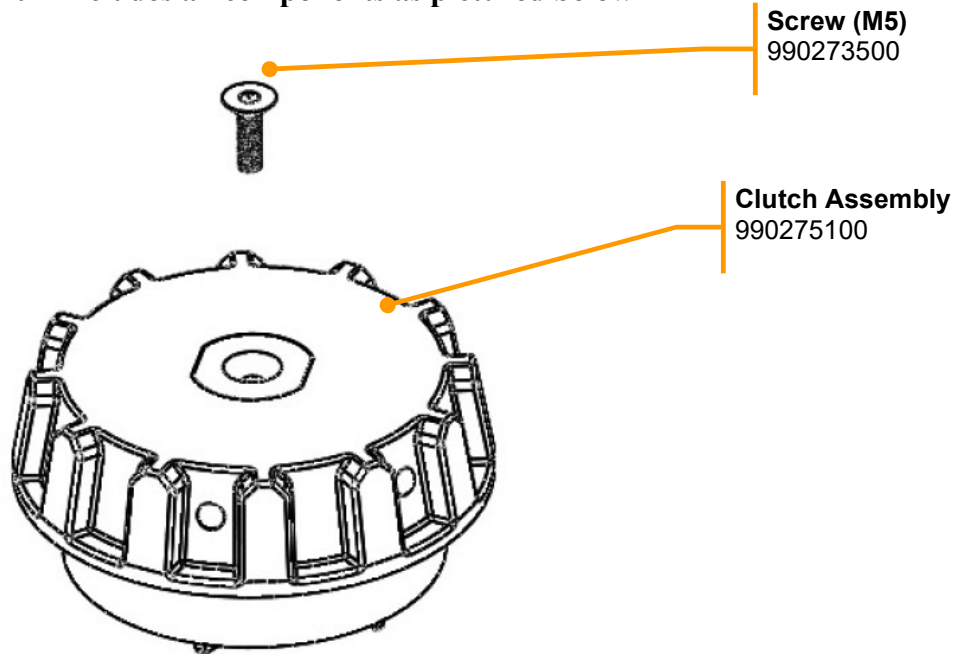
Picture showing 120V Main PCB Assembly

 4421 Waterfront Drive Glen Allen, VA 23060	Revision	Replace 990271500 with 990271501				Rev. Date:
	Description:					17-Apr-2026
	Request #:	DOC15402	Page:	18 of 22	Document #:	540102200

Parts & Accessories Diagram – Model HJE960 – SERIES E – Industrial Relays

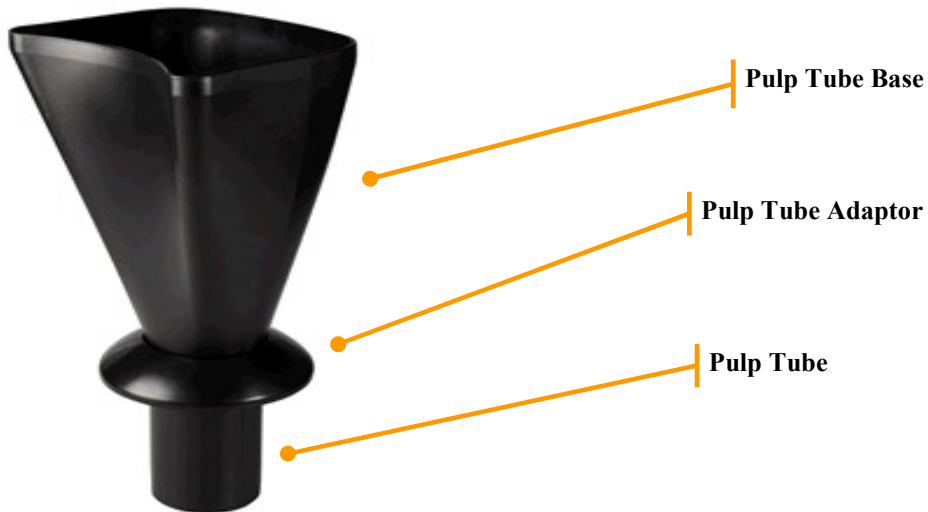
PROPRIETARY RIGHTS NOTICE This document and all information contained within it is the property of Hamilton Beach Brands, Inc. (HBB). It is confidential and proprietary and has been provided to you for a limited purpose. It must be returned or destroyed upon request. Disclosure, reproduction or use of this document and any information contained within it, in full or in part, for any purpose is forbidden without the prior written consent of HBB. No photographs may be taken of any article fabricated or assembled from this document without the prior written consent of HBB.


990272200 Clutch Kit – Includes all components as pictured below



Accessories

UTC960 – Includes all components as pictured below



 4421 Waterfront Drive Glen Allen, VA 23060	Revision	Replace 990271500 with 990271501				Rev. Date:
	Description:	Request #:	DOC15402	Page:	19 of 22	17-Apr-2026
				Document #:	540102200	Rev: B

Parts & Accessories Diagram – Model [HJE960](#) – SERIES E – Industrial Relays

PROPRIETARY RIGHTS NOTICE This document and all information contained within it is the property of Hamilton Beach Brands, Inc. (HBB). It is confidential and proprietary and has been provided to you for a limited purpose. It must be returned or destroyed upon request. Disclosure, reproduction or use of this document and any information contained within it, in full or in part, for any purpose is forbidden without the prior written consent of HBB. No photographs may be taken of any article fabricated or assembled from this document without the prior written consent of HBB.

Strainer Baskets:

SB960 for Normal “Wet” Foods


[SB961](#) for Green Leafy Vegetables (i.e. Kale, Spinach, etc.)

SB960 (shown below)



Enlarged view of SB960 hole pattern



 <p>Hamilton Beach 4421 Waterfront Drive Glen Allen, VA 23060</p>	Revision	Replace 990271500 with 990271501				Rev. Date:
	Description:					17-Apr-2026
	Request #:	DOC15402	Page:	20 of 22	Document #:	540102200
					Rev:	B

Parts & Accessories Diagram – Model **HJE960** – SERIES E – Industrial Relays


PROPRIETARY RIGHTS NOTICE This document and all information contained within it is the property of Hamilton Beach Brands, Inc. (HBB). It is confidential and proprietary and has been provided to you for a limited purpose. It must be returned or destroyed upon request. Disclosure, reproduction or use of this document and any information contained within it, in full or in part, for any purpose is forbidden without the prior written consent of HBB. No photographs may be taken of any article fabricated or assembled from this document without the prior written consent of HBB.

SB961 (shown below)



Enlarged View of **SB961** Hole Pattern



 4421 Waterfront Drive Glen Allen, VA 23060	Revision	Replace 990271500 with 990271501				Rev. Date:
	Description:					17-Apr-2026
	Request #:	DOC15402	Page:	21 of 22	Document #:	540102200
					Rev:	B

Parts & Accessories Diagram – Model HJE960 – SERIES E – Industrial Relays

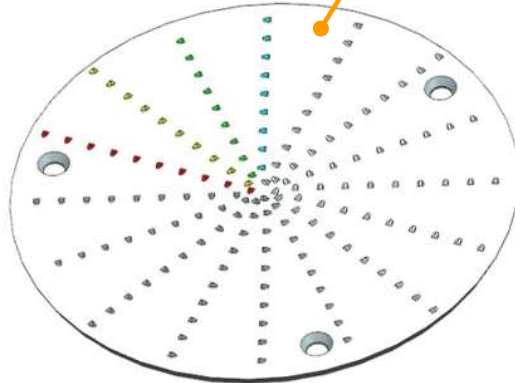
PROPRIETARY RIGHTS NOTICE This document and all information contained within it is the property of Hamilton Beach Brands, Inc. (HBB). It is confidential and proprietary and has been provided to you for a limited purpose. It must be returned or destroyed upon request. Disclosure, reproduction or use of this document and any information contained within it, in full or in part, for any purpose is forbidden without the prior written consent of HBB. No photographs may be taken of any article fabricated or assembled from this document without the prior written consent of HBB.

SB960 & SB961 Accessory Strainer Baskets – Parts Breakdown

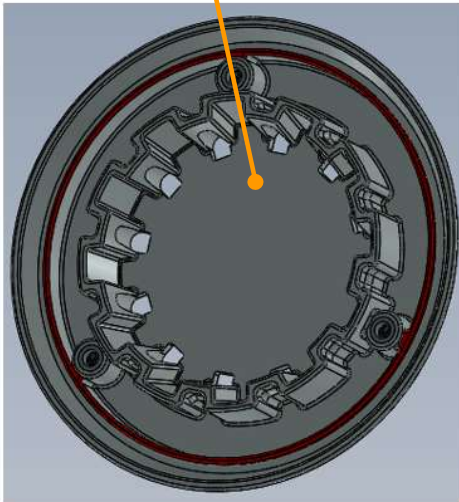
Screw (M6 x 16)
Qty. 3
990272000



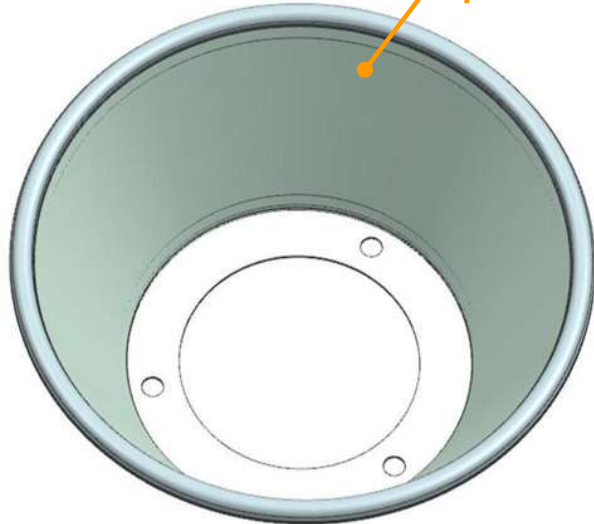
Grating Disc
990271501




Basket Base
990271700



Strainer Basket
990318100 (SB961)
990271600 (SB960)



 4421 Waterfront Drive Glen Allen, VA 23060	Revision	Replace 990271500 with 990271501				Rev. Date:	
	Description:	Request #:	DOC15402	Page:	22 of 22	Document #:	540102200
						Rev:	B