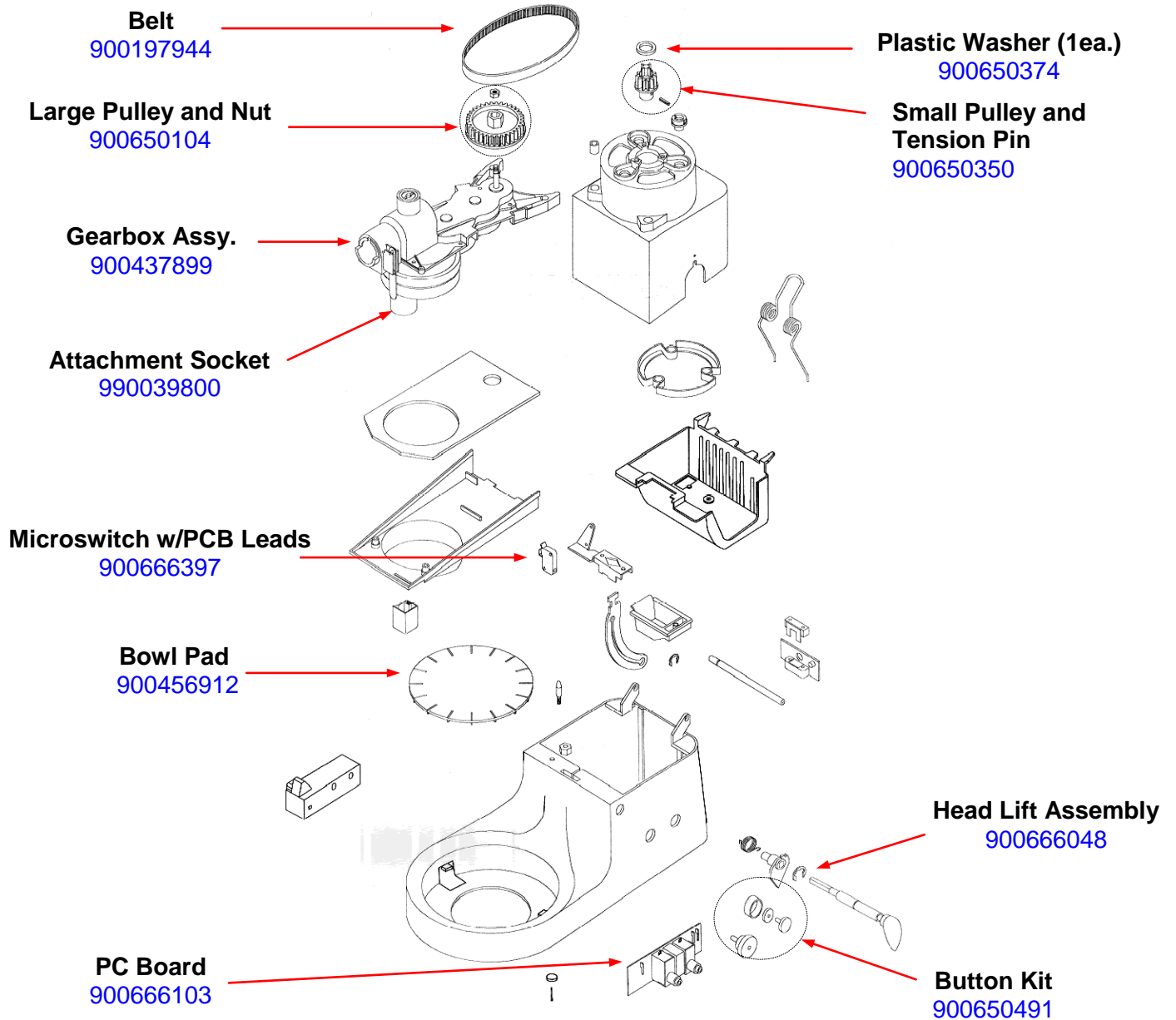



Parts & Replacement Diagram Model CPM700

PROPRIETARY RIGHTS NOTICE This document and all information contained within it is the property of Hamilton Beach Brands, Inc. (HBB). It is confidential and proprietary and has been provided to you for a limited purpose. It must be returned or destroyed upon request. Disclosure, reproduction or use of this document and any information contained within it, in full or in part, for any purpose is forbidden without the prior written consent of HBB. No photographs may be taken of any article fabricated or assembled from this document without the prior written consent of HBB.

Replacement Parts:

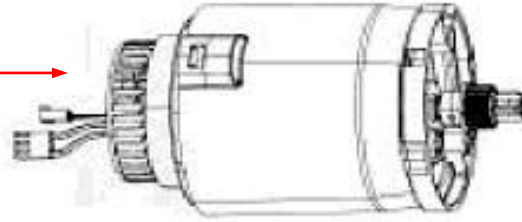


 4421 Waterfront Drive Glen Allen, VA 23060	Revision Description:	Added Accessory Parts					
	Request Number:	HQE15290	Revision Date:	09/17/13	Approved by:	HQE15290	
	Issue Code(s):		Page:	1 of 3	Document #:	510013500	Rev:

Parts & Replacement Diagram Model CPM700

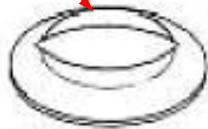
PROPRIETARY RIGHTS NOTICE This document and all information contained within it is the property of Hamilton Beach Brands, Inc. (HBB). It is confidential and proprietary and has been provided to you for a limited purpose. It must be returned or destroyed upon request. Disclosure, reproduction or use of this document and any information contained within it, in full or in part, for any purpose is forbidden without the prior written consent of HBB. No photographs may be taken of any article fabricated or assembled from this document without the prior written consent of HBB.

Motor Complete
900665719




Brush and Spring Set
900660018

Speed Control Knob
900660056



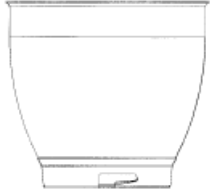
Speed Control Module
900660393



 Hamilton Beach 4421 Waterfront Drive Glen Allen, VA 23060	Revision Description:	Added Accessory Parts						
	Request Number:	HQE15290	Revision Date:	09/17/13	Approved by:	HQE15290		
	Issue Code(s):		Page:	2 of 3	Document #:	510013500	Rev:	B

Parts & Replacement Diagram Model CPM700

PROPRIETARY RIGHTS NOTICE This document and all information contained within it is the property of Hamilton Beach Brands, Inc. (HBB). It is confidential and proprietary and has been provided to you for a limited purpose. It must be returned or destroyed upon request. Disclosure, reproduction or use of this document and any information contained within it, in full or in part, for any purpose is forbidden without the prior written consent of HBB. No photographs may be taken of any article fabricated or assembled from this document without the prior written consent of HBB.



Bowl
BW700




Whisk
WW700SS



Beater
KB700SS



Dough Hook
DH700SS

 Hamilton Beach 4421 Waterfront Drive Glen Allen, VA 23060	Revision Description:		Added Accessory Parts					
	Request Number:	HQE15290	Revision Date:	09/17/13	Approved by:	HQE15290		
	Issue Code(s):		Page:	3 of 3	Document #:	510013500	Rev:	B