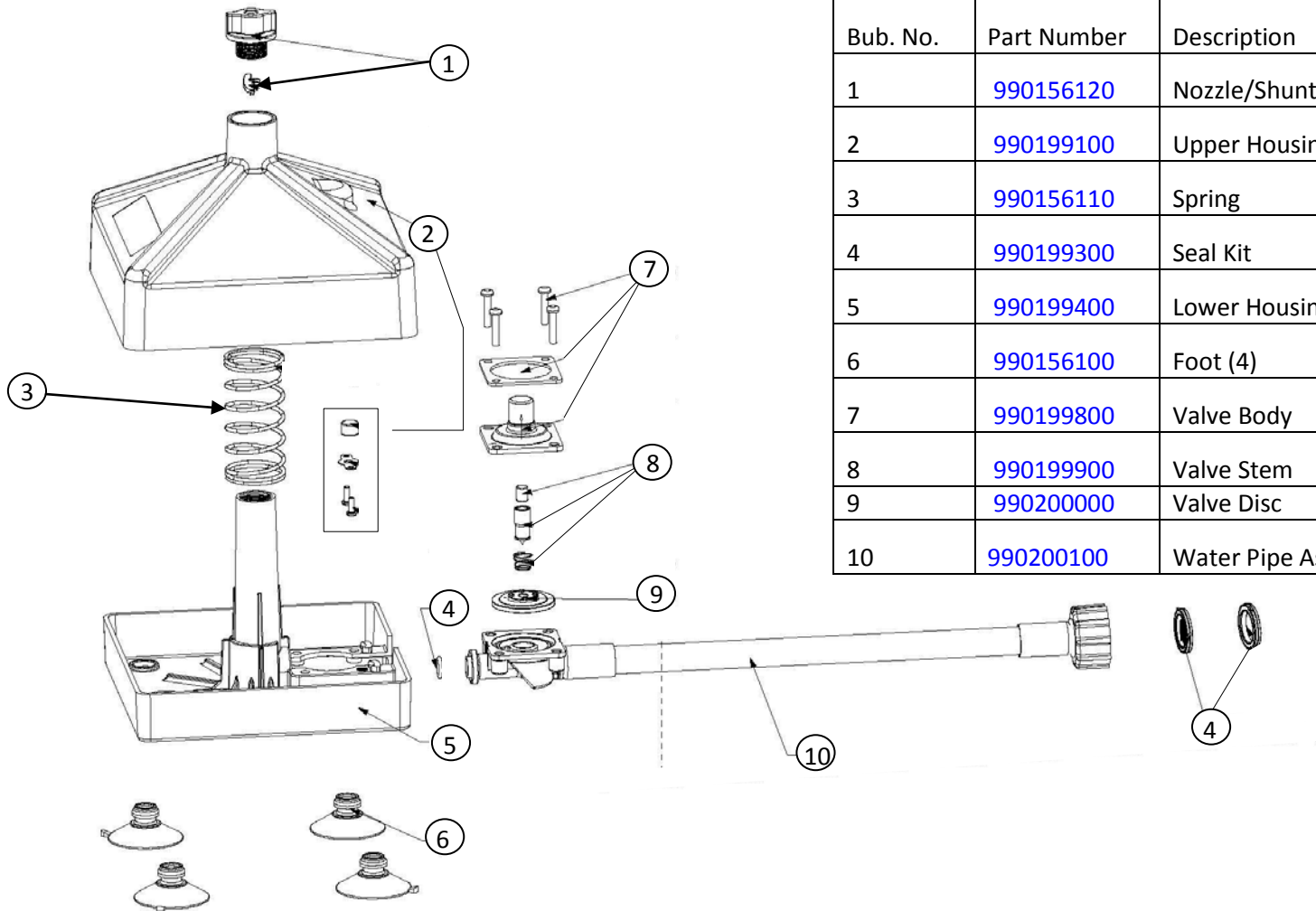



Parts & Accessories Diagram

PROPRIETARY RIGHTS NOTICE This document and all information contained within it is the property of Hamilton Beach Brands, Inc. (HBB). It is confidential and proprietary and has been provided to you for a limited purpose. It must be returned or destroyed upon request. Disclosure, reproduction or use of this document and any information contained within it, in full or in part, for any purpose is forbidden without the prior written consent of HBB. No photographs may be taken of any article fabricated or assembled from this document without the prior written consent of HBB.



Bub. No.	Part Number	Description
1	990156120	Nozzle/Shunt
2	990199100	Upper Housing
3	990156110	Spring
4	990199300	Seal Kit
5	990199400	Lower Housing
6	990156100	Foot (4)
7	990199800	Valve Body
8	990199900	Valve Stem
9	990200000	Valve Disc
10	990200100	Water Pipe Assy.

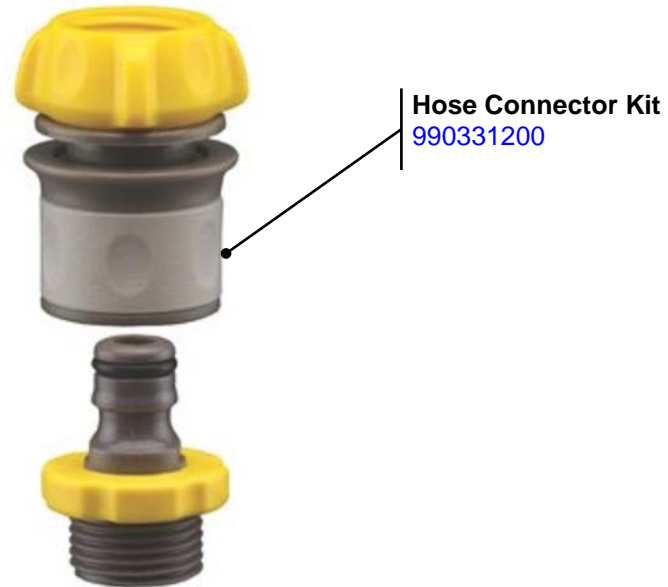
 4421 Waterfront Drive Glen Allen, VA 23060	Revision Description:	Add Container Rinser				
	Request Number:	DOC10113	Revision Date:	8/05/19	Approved by:	DOC10113
	Issue Code(s):		Page:	1 of 2	Document #:	540086400
					Rev:	B


ENG-FRM-RIC-4.32, REV.E

Parts & Accessories Diagram

PROPRIETARY RIGHTS NOTICE This document and all information contained within it is the property of Hamilton Beach Brands, Inc. (HBB). It is confidential and proprietary and has been provided to you for a limited purpose. It must be returned or destroyed upon request. Disclosure, reproduction or use of this document and any information contained within it, in full or in part, for any purpose is forbidden without the prior written consent of HBB. No photographs may be taken of any article fabricated or assembled from this document without the prior written consent of HBB.

Accessories



 4421 Waterfront Drive Glen Allen, VA 23060	Revision Description:	Add Container Rinser					
	Request Number:	DOC10113	Revision Date:	8/05/19	Approved by:	DOC10113	
	Issue Code(s):		Page:	2 of 2	Document #:	540086400	Rev:

ENG-FRM-RIC-4.32, REV.E