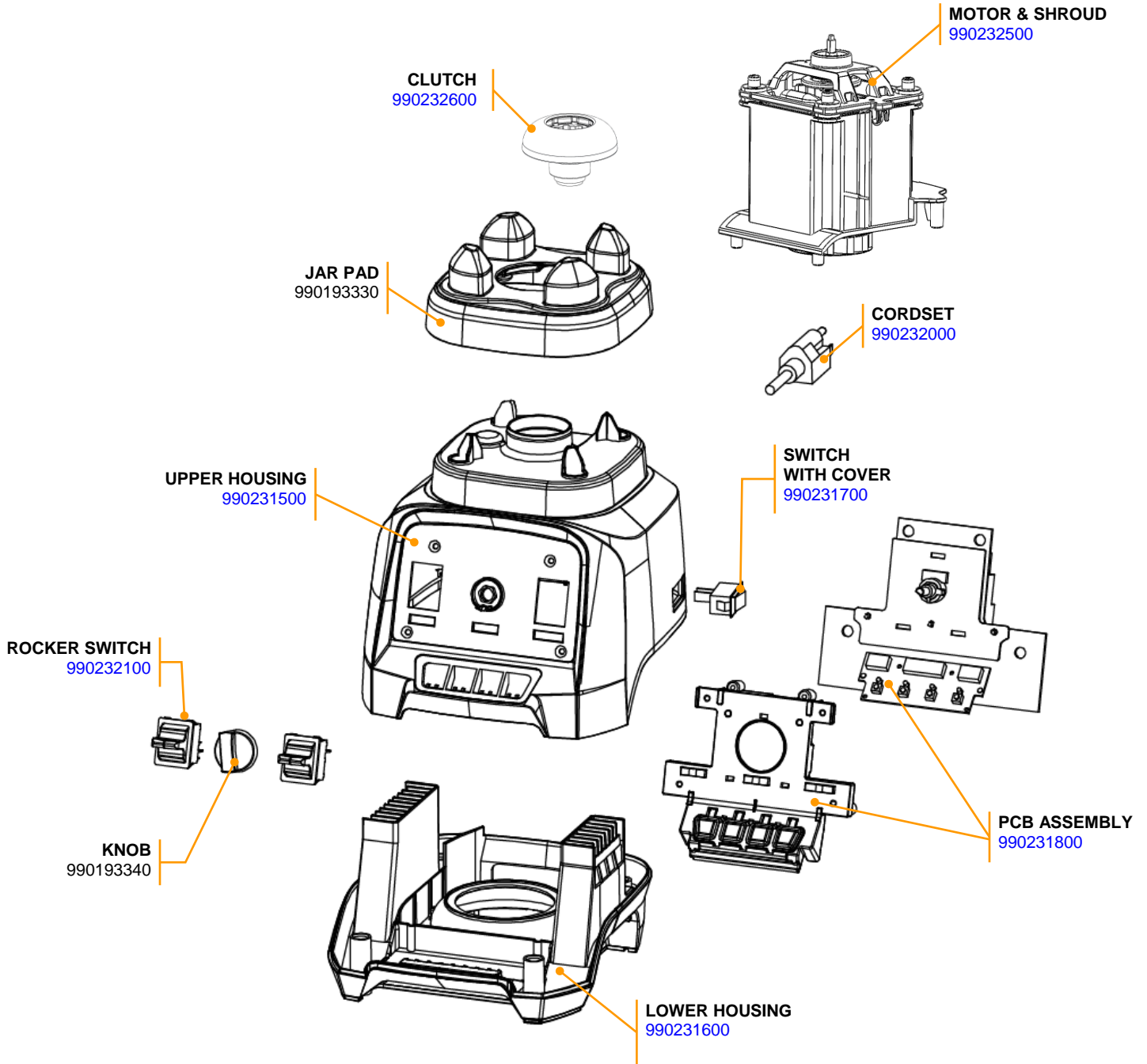



Parts and Accessories Diagram

5500

PROPRIETARY RIGHTS NOTICE This document and all information contained within it is the property of Hamilton Beach Brands, Inc. (HBB). It is confidential and proprietary and has been provided to you for a limited purpose. It must be returned or destroyed upon request. Disclosure, reproduction or use of this document and any information contained within it, in full or in part, for any purpose is forbidden without the prior written consent of HBB. No photographs may be taken of any article fabricated or assembled from this document without the prior written consent of HBB.

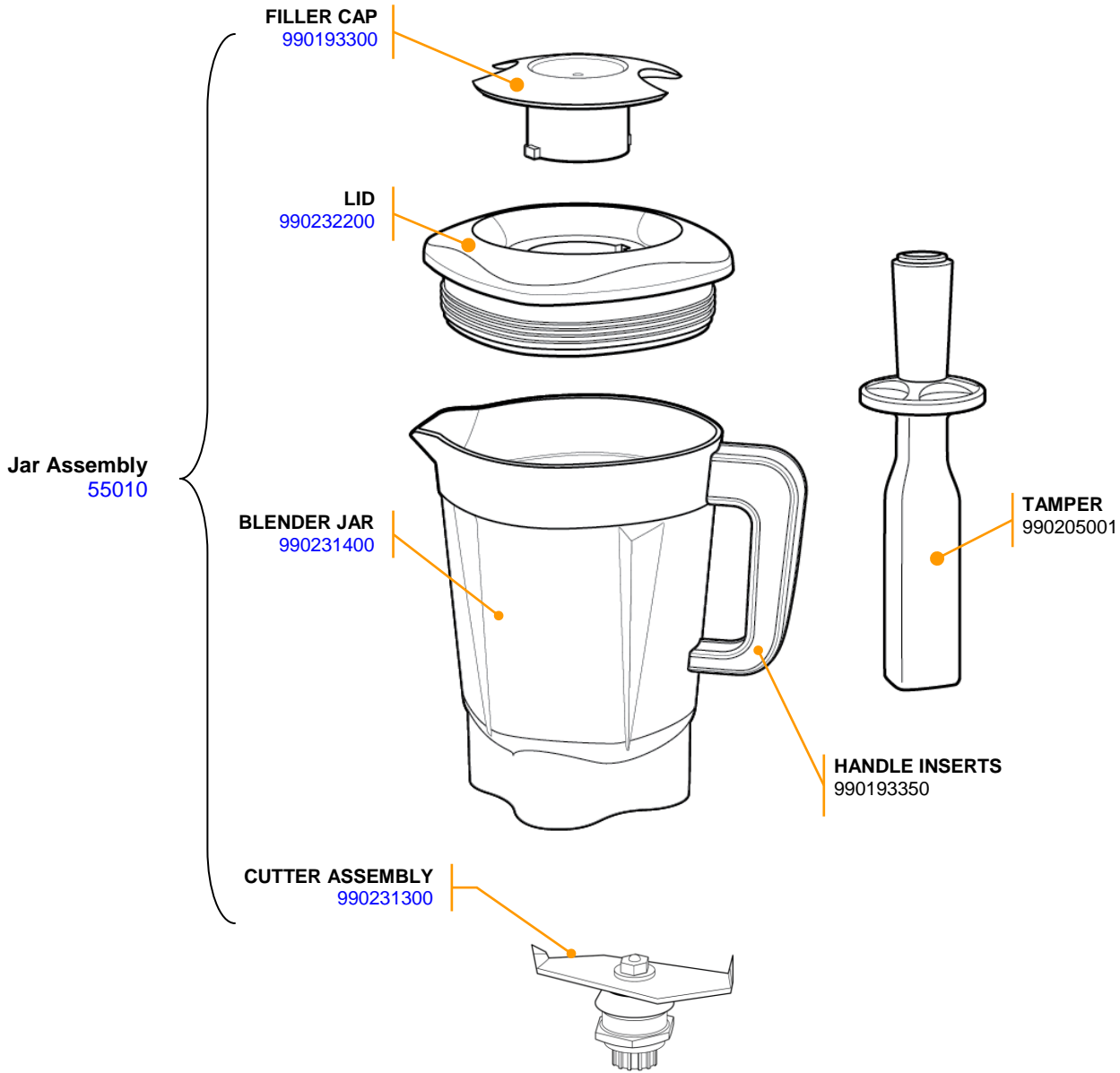



 <p>Hamilton Beach 4421 Waterfront Drive Glen Allen, VA 23060</p>	Revision Description:	Correct PAD				
	Request Number:	DOC10329	Revision Date:	03/03/2020	Approved by:	DOC10329
	Issue Code(s):		Page:	1 of 2	Document #:	540092200
					Rev:	B

Parts and Accessories Diagram

5500

PROPRIETARY RIGHTS NOTICE This document and all information contained within it is the property of Hamilton Beach Brands, Inc. (HBB). It is confidential and proprietary and has been provided to you for a limited purpose. It must be returned or destroyed upon request. Disclosure, reproduction or use of this document and any information contained within it, in full or in part, for any purpose is forbidden without the prior written consent of HBB. No photographs may be taken of any article fabricated or assembled from this document without the prior written consent of HBB.



 <p>Hamilton Beach 4421 Waterfront Drive Glen Allen, VA 23060</p>	Revision Description: Correct PAD		Revision Date: 03/03/2020		Approved by: DOC10329	
	Request Number: DOC10329	Page: 2 of 2		Document #: 540092200	Rev: B	
	Issue Code(s):					