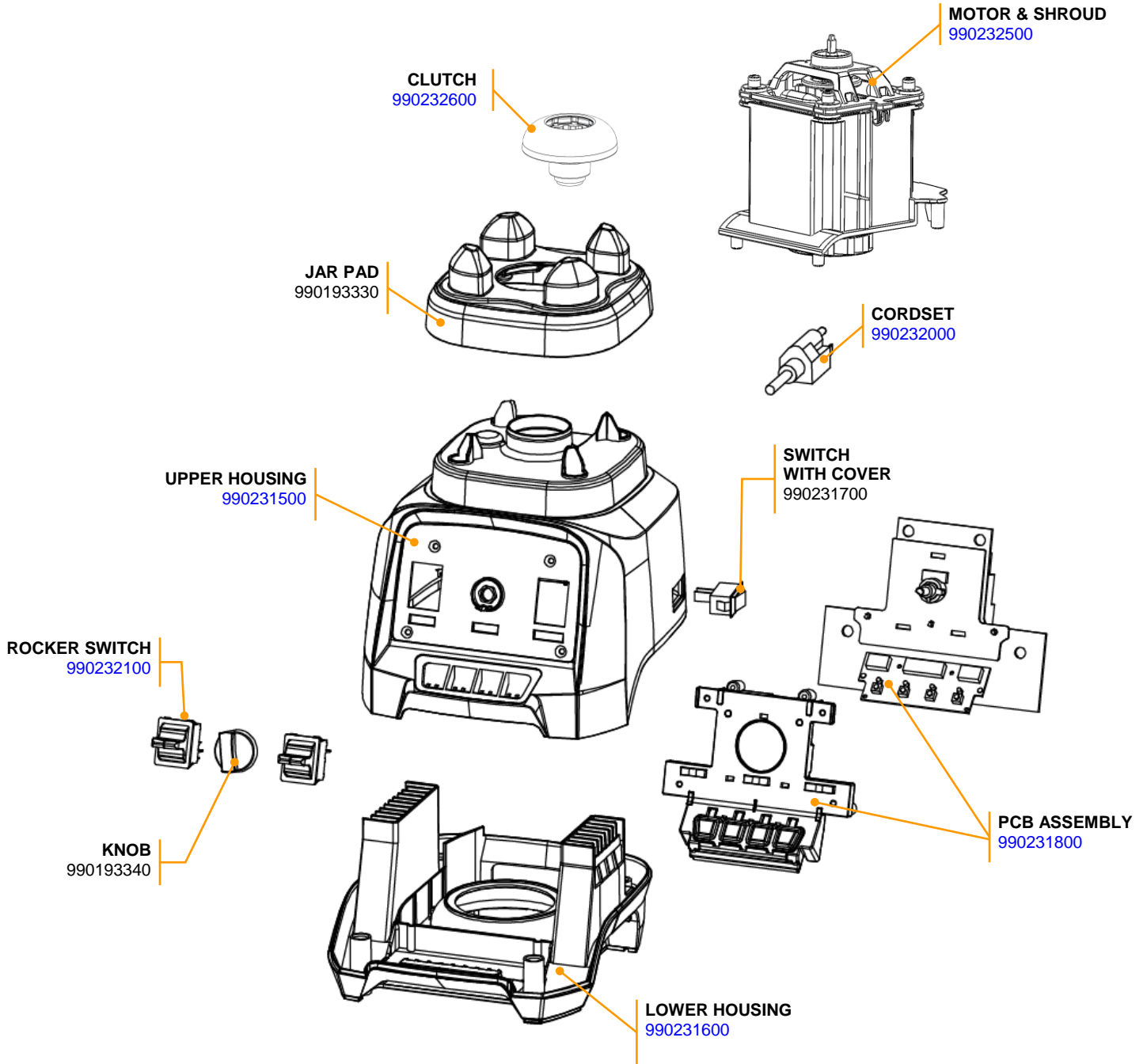


# Parts and Accessories Diagram

55000

**PROPRIETARY RIGHTS NOTICE** This document and all information contained within it is the property of Hamilton Beach Brands, Inc. (HBB). It is confidential and proprietary and has been provided to you for a limited purpose. It must be returned or destroyed upon request. Disclosure, reproduction or use of this document and any information contained within it, in full or in part, for any purpose is forbidden without the prior written consent of HBB. No photographs may be taken of any article fabricated or assembled from this document without the prior written consent of HBB.

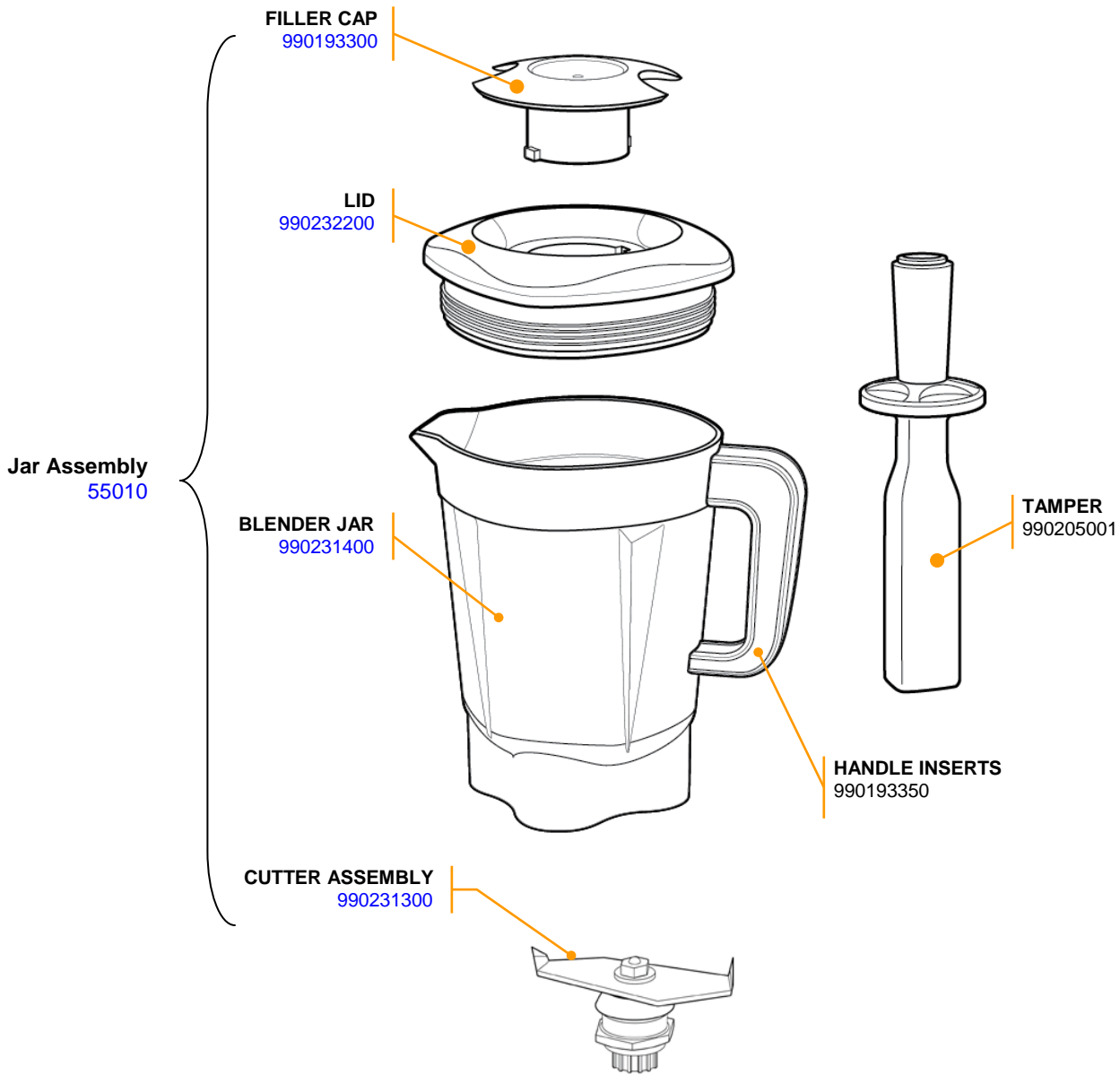



 4421 Waterfront Drive Glen Allen, VA 23060	Revision Description:	Production Release					
	Request Number:	DOC8253	Revision Date:	10/03/2017	Approved by:	DOC8253	
	Issue Code(s):		Page:	1 of 2	Document #:	540095900	Rev:

## Parts and Accessories Diagram

**5500**

**PROPRIETARY RIGHTS NOTICE** This document and all information contained within it is the property of Hamilton Beach Brands, Inc. (HBB). It is confidential and proprietary and has been provided to you for a limited purpose. It must be returned or destroyed upon request. Disclosure, reproduction or use of this document and any information contained within it, in full or in part, for any purpose is forbidden without the prior written consent of HBB. No photographs may be taken of any article fabricated or assembled from this document without the prior written consent of HBB.



 <p>Hamilton Beach 4421 Waterfront Drive Glen Allen, VA 23060</p>	Revision Description: <b>Production Release</b>		Request Number: <b>DOC8253</b>		Revision Date: <b>10/03/2017</b>		Approved by: <b>DOC8253</b>	
	Issue Code(s):		Page: <b>2 of 2</b>		Document #: <b>540095900</b>		Rev: <b>A</b>	