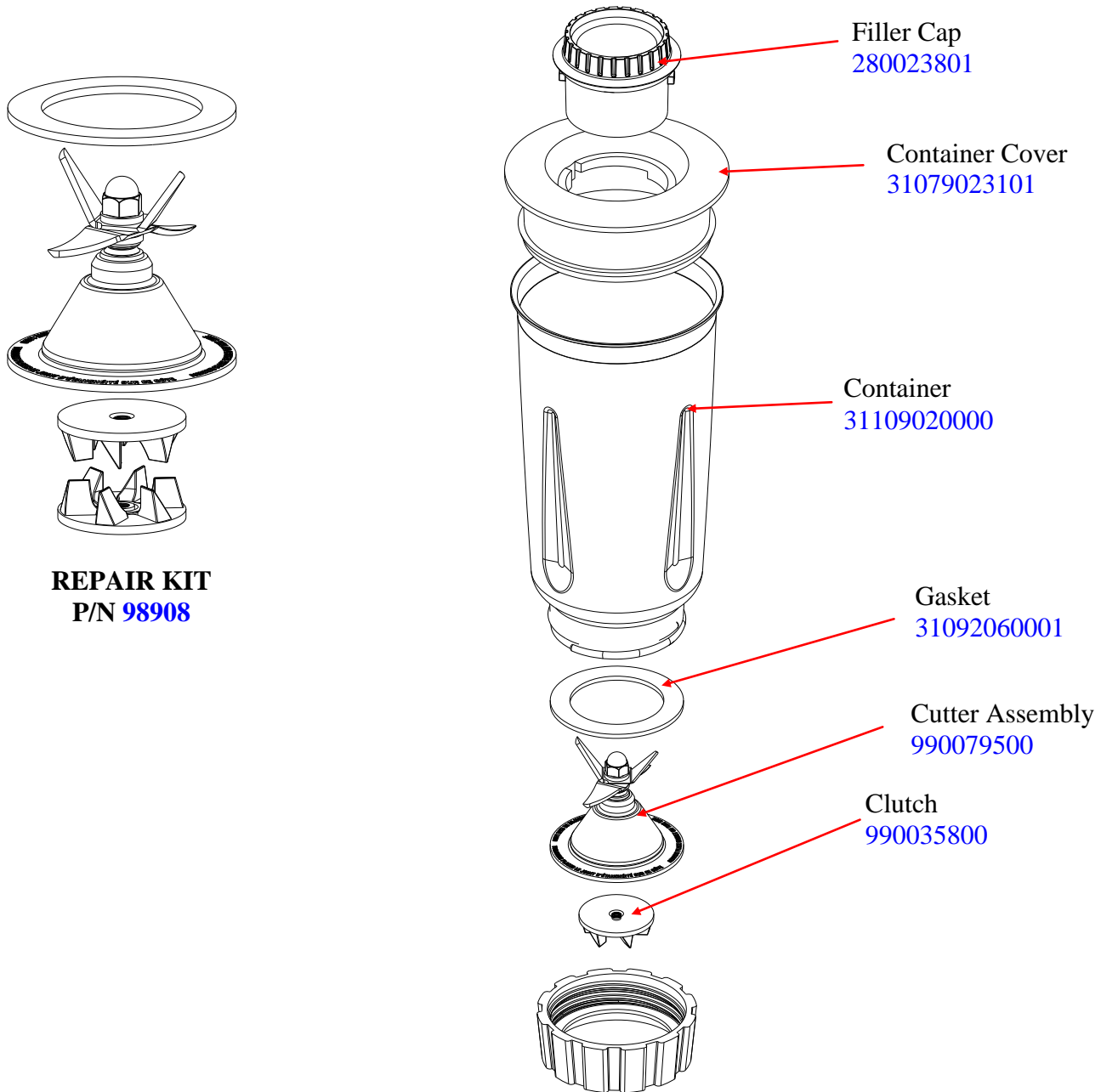



Parts and Accessories Diagram

PROPRIETARY RIGHTS NOTICE This document and all information contained within it is the property of Hamilton Beach Brands, Inc. (HBB). It is confidential and proprietary and has been provided to you for a limited purpose. It must be returned or destroyed upon request. Disclosure, reproduction or use of this document and any information contained within it, in full or in part, for any purpose is forbidden without the prior written consent of HBB. No photographs may be taken of any article fabricated or assembled from this document without the prior written consent of HBB.



6126-1G919 - COMPLETE CONTAINER ASSEMBLY

| | | | | | | |
|--|-----------------------|---------|------------------------|------------|--------------|------------------|
|  Hamilton Beach 4421 Waterfront Drive Glen Allen, VA 23060 | Revision Description: | | Removed Obsolete Parts | | | |
| | Request Number: | DOC9436 | Revision Date: | 10/18/2018 | Approved by: | DOC9436 |
| | Issue Code(s): | | Page: | 1 of 3 | Document #: | 510010400 |
| | | | | | Rev: | F |

Parts and Accessories Diagram

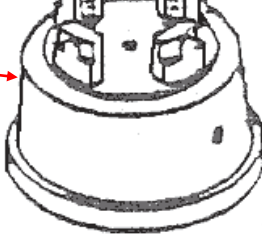
PROPRIETARY RIGHTS NOTICE This document and all information contained within it is the property of Hamilton Beach Brands, Inc. (HBB). It is confidential and proprietary and has been provided to you for a limited purpose. It must be returned or destroyed upon request. Disclosure, reproduction or use of this document and any information contained within it, in full or in part, for any purpose is forbidden without the prior written consent of HBB. No photographs may be taken of any article fabricated or assembled from this document without the prior written consent of HBB.

1G919 Upper Housing Assembly


Clutch
990035800



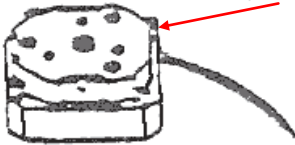
Upper Housing
31009113101



On/Off/Pulse Switch
960010500





Motor Mount Kit
910691100



Flat Washer

Spring Washer

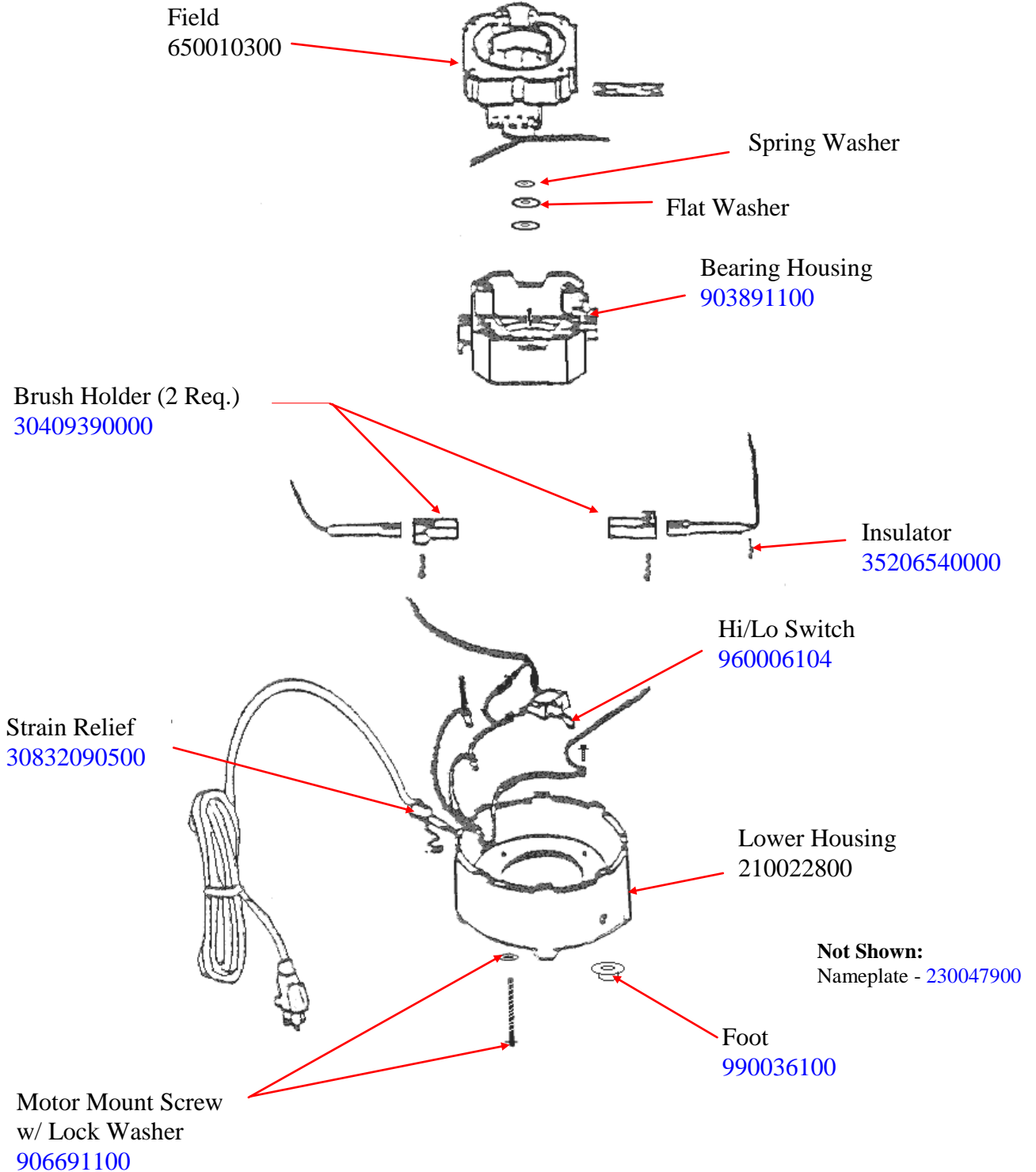



| | | | | | | |
|--|-----------------------|---------|------------------------|------------|--------------|------------------|
|  Hamilton Beach 4421 Waterfront Drive Glen Allen, VA 23060 | Revision Description: | | Removed Obsolete Parts | | | |
| | Request Number: | DOC9436 | Revision Date: | 10/18/2018 | Approved by: | DOC9436 |
| | Issue Code(s): | | Page: | 2 of 3 | Document #: | 510010400 |
| | | | | | Rev: | F |

Parts and Accessories Diagram

PROPRIETARY RIGHTS NOTICE This document and all information contained within it is the property of Hamilton Beach Brands, Inc. (HBB). It is confidential and proprietary and has been provided to you for a limited purpose. It must be returned or destroyed upon request. Disclosure, reproduction or use of this document and any information contained within it, in full or in part, for any purpose is forbidden without the prior written consent of HBB. No photographs may be taken of any article fabricated or assembled from this document without the prior written consent of HBB.

1G919 Lower Housing Assembly



| | | | | | | |
|--|-----------------------|---------|------------------------|------------|--------------|------------------|
|  4421 Waterfront Drive Glen Allen, VA 23060 | Revision Description: | | Removed Obsolete Parts | | | |
| | Request Number: | DOC9436 | Revision Date: | 10/18/2018 | Approved by: | DOC9436 |
| | Issue Code(s): | | Page: | 3 of 3 | Document #: | 510010400 |
| | | | | | Rev: | F |