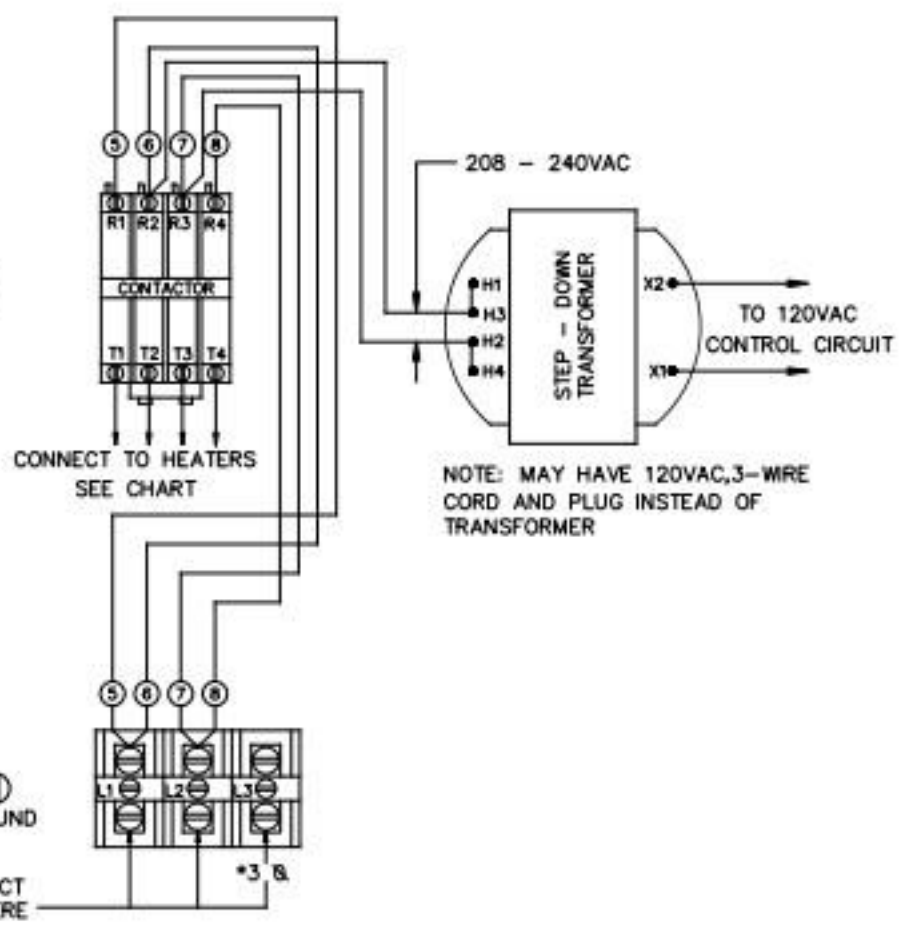
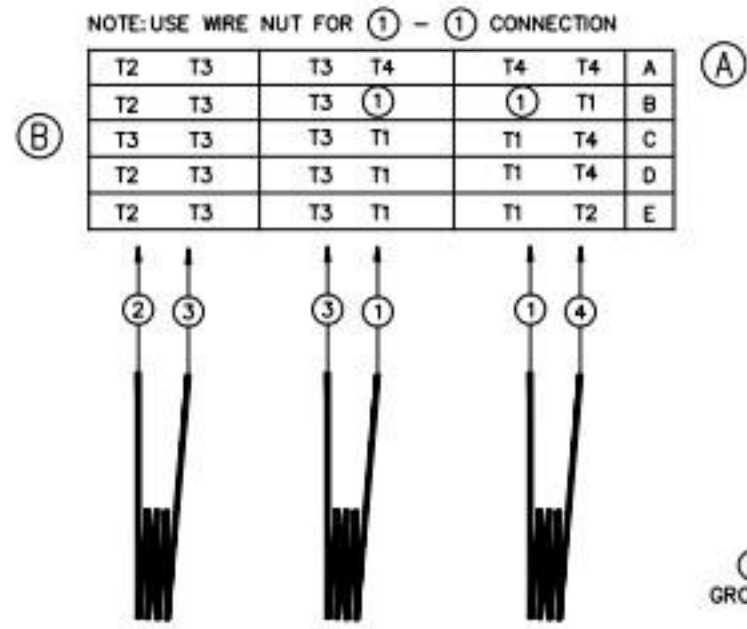


120/208V - 1 PH - 3 WIRE  
 120/240V - 1 PH - 3 WIRE  
 120/208V - 3 PH - 4 WIRE  
 (WITH NEUTRAL WIRE)

\* FOR 3 PHASE WIRING

1. MOVE WIRE (6) FROM L1 TO L3
2. CONNECT HEATER ACCORDING TO FIG. E ON CHART
3. FIG. E FOR 3 PH ONLY



NOTE: MAY HAVE 120VAC, 3-WIRE CORD AND PLUG INSTEAD OF TRANSFORMER

240V HEATERS

EACH HTR. SIZE	208V SERVICE									
	A		B		C		D		E *	
	KW	AMPS	KW	AMPS	KW	AMPS	KW	AMPS	KW	AMPS
3.5 KW	2.5	13	4.0	19	5.5	25	8.0	38	8.0	22
4.0 KW	3.0	14	4.5	22	6.0	29	9.0	43	9.0	25
5.0 KW	4.0	18	5.5	27	7.5	38	11.5	54	11.5	31
5.7 KW	4.5	21	6.5	31	8.5	41	13	62	13	36
6.6 KW	5.0	24	7.5	36	10.0	48	15.0	72	15.0	42
EACH HTR. SIZE	240V SERVICE									
	A		B		C		D		E *	
	KW	AMPS	KW	AMPS	KW	AMPS	KW	AMPS	KW	AMPS
3.5 KW	3.5	15	5.0	22	7.0	29	10.5	44	10.5	25
4.0 KW	4.0	17	6.0	25	8.0	33	12.0	50	12.0	29
5.0 KW	5.0	21	7.5	31	10.0	42	15.0	63	15.0	36

\* 3 PH. - ONLY

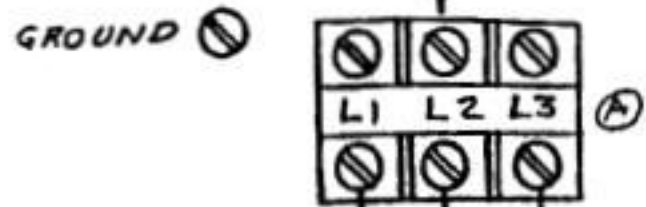
WIRES (5) (6) (7) (8) ARE 8 AWG, 105°C  
 (1) (2) (3) (4) ARE 10 AWG, 105°C

- (C) 208V OR 240V - 1 PH - 2 WIRE
- 208V OR 240V - 3 PH - 3 WIRE

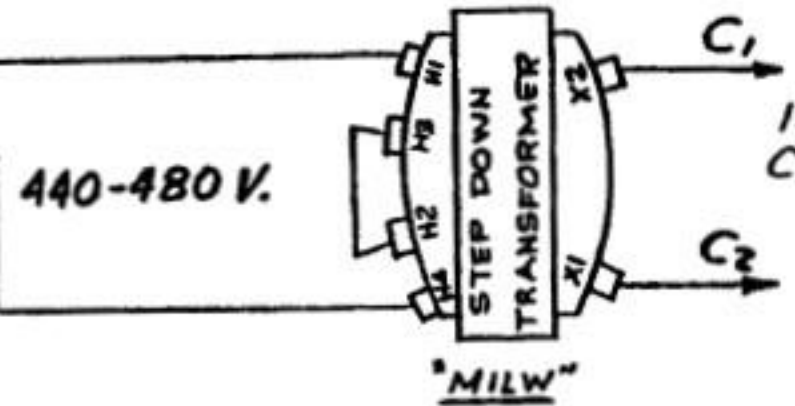
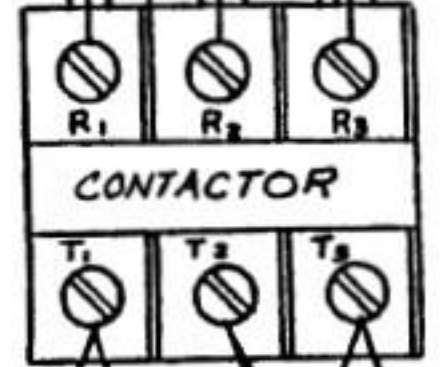
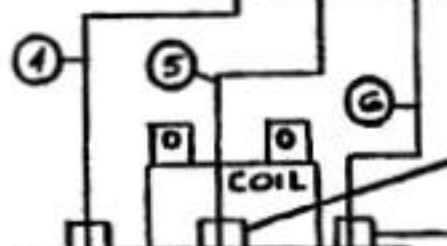
\* FOR 3 PHASE WIRING

- (B) 1. MOVE WIRE (6) FROM L1 TO L3
2. CONNECT HEATER ACCORDING TO FIG. E ON CHART
3. FIG. E FOR 3 PH ONLY

CONNECT POWER HERE → SEE ELECTRICAL NAMEPLATE FOR PROPER VOLTAGE, PHASE, AND NUMBER OF WIRES REQUIRED.



**440-480 VOLT OR 380 VOLT  
THREE PHASE WIRING SHOWN**  
CONNECT LINE WIRES TO L<sub>1</sub>, L<sub>2</sub>, & L<sub>3</sub>

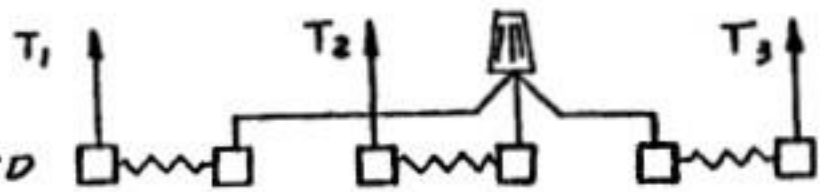


120 VOLT CONTROL CIRCUIT  
SEE NOTE

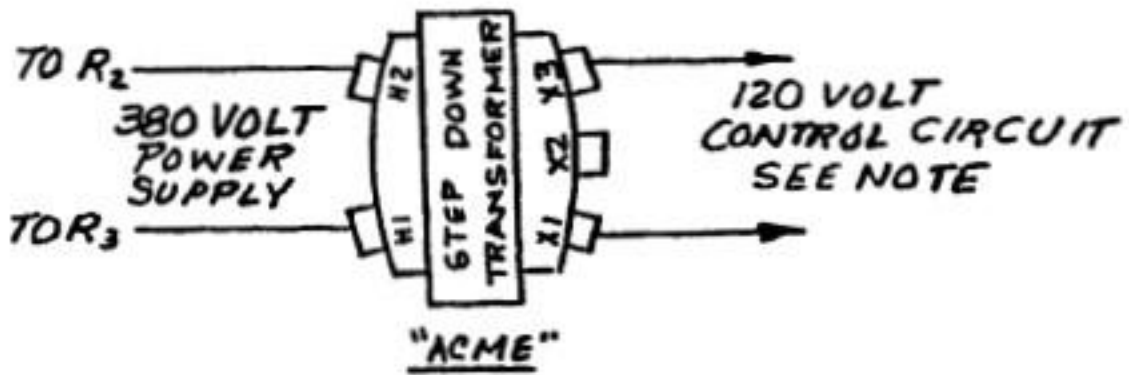
Δ CONNECTED



Y CONNECTED



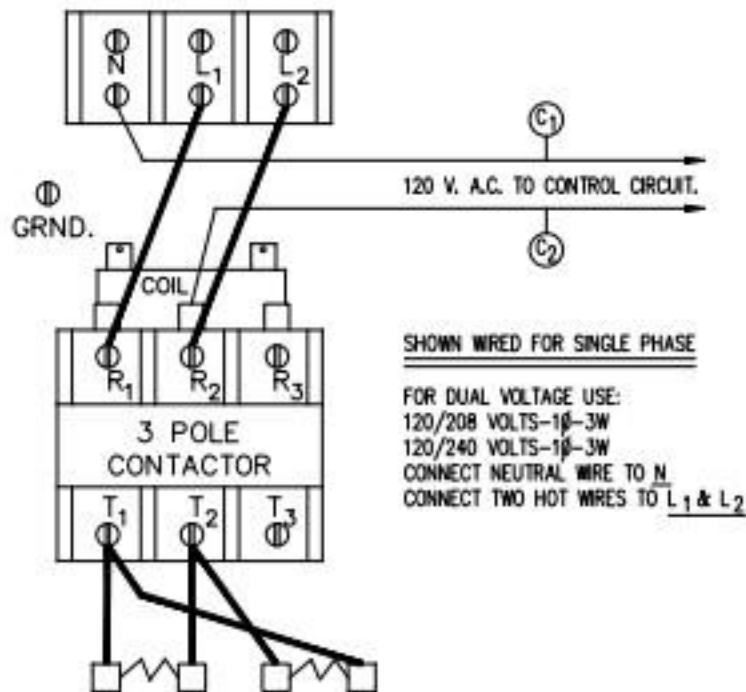
3 HEATING ELEMENTS



120 VOLT CONTROL CIRCUIT  
SEE NOTE

**SINGLE PHASE ONLY**

CONNECT POWER HERE



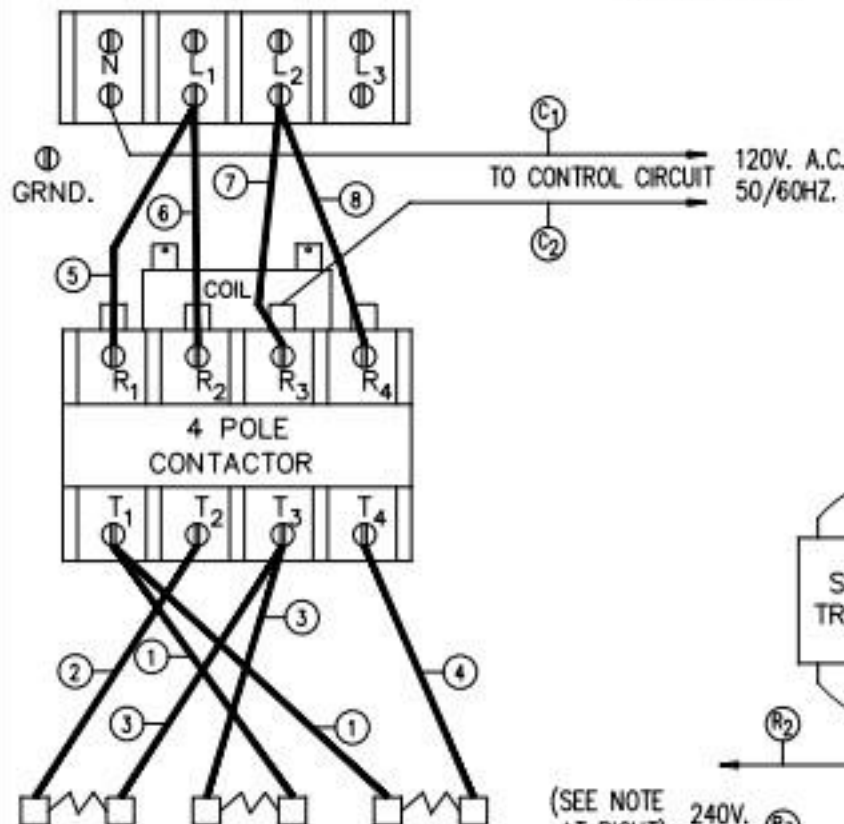
SHOWN WIRED FOR SINGLE PHASE

FOR DUAL VOLTAGE USE:  
 120/208 VOLTS-1Ø-3W  
 120/240 VOLTS-1Ø-3W  
 CONNECT NEUTRAL WIRE TO N  
 CONNECT TWO HOT WIRES TO L<sub>1</sub> & L<sub>2</sub>

2 HEATING ELEMENTS - SINGLE PHASE ONLY  
 DO NOT WIRE 2 ELEMENTS 3 PHASE  
 NOTE: A 2 POLE CONTACTOR MAY BE USED ON MODELS  
 HAVING A LOW WATTAGE HEATER

CONNECT POWER HERE

SEE ELECTRICAL NAMEPLATE FOR PROPER  
 VOLTAGE, PHASE AND NUMBER OF WIRES  
 AND AMPERE LOAD.



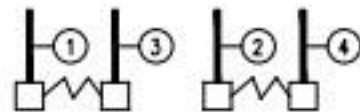
SINGLE PHASE WIRING SHOWN  
 TO CONVERT TO THREE PHASE Δ  
 1) MOVE WIRE ⑥ FROM L<sub>1</sub> TO L<sub>3</sub>.  
 2) MOVE WIRE ④ FROM T<sub>4</sub> TO T<sub>2</sub>.

(SEE NOTE  
 AT RIGHT)

NOTE: R<sub>2</sub> AND R<sub>3</sub> TERMINALS SHOWN  
 ARE FOR 4 POLE CONTACTORS.  
 R<sub>1</sub> AND R<sub>2</sub> TERMINALS ARE USED  
 FOR 3 POLE CONTACTORS.

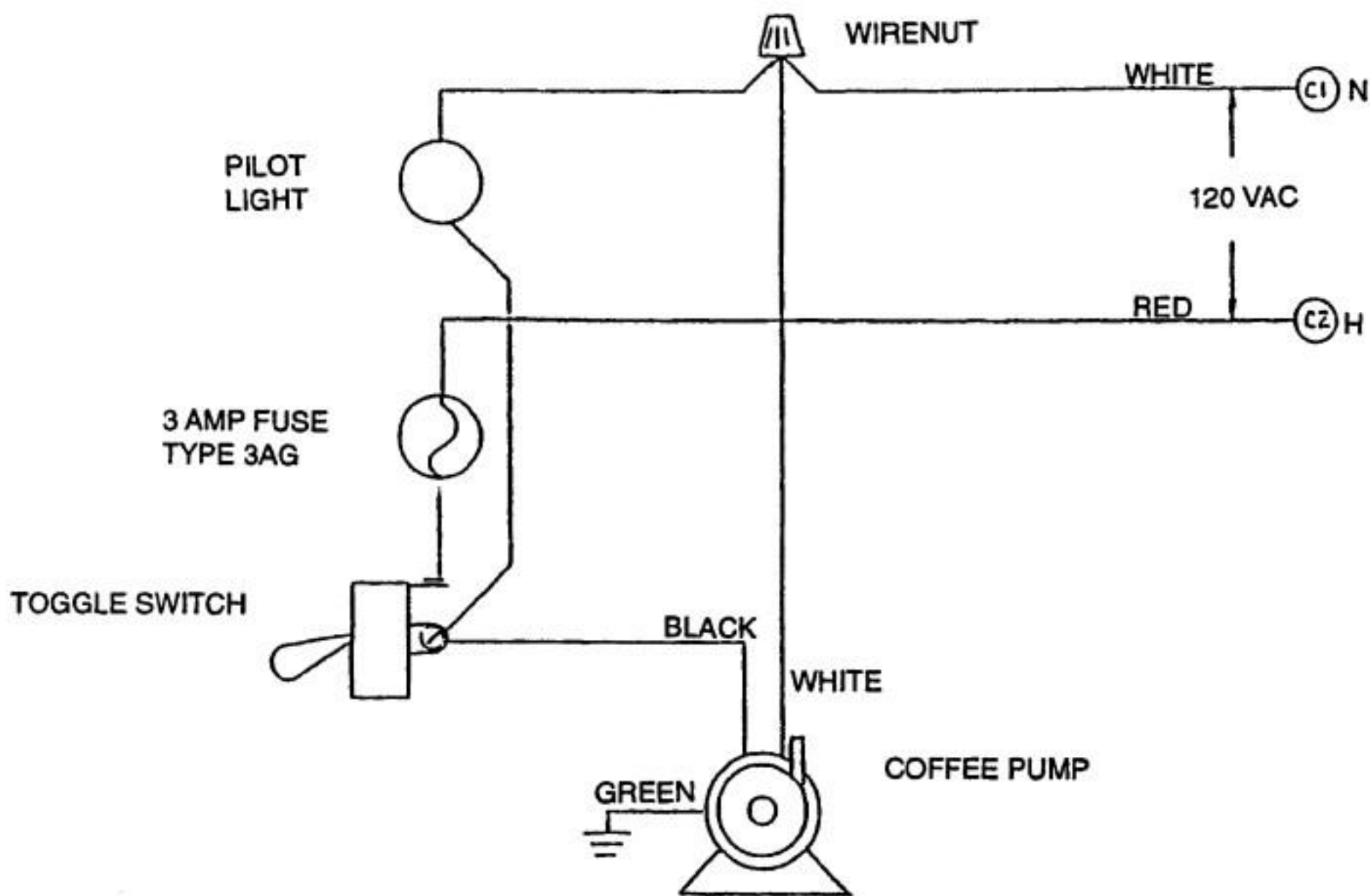
NEUTRAL TERMINAL BLOCK NOT SUPPLIED WITH TRANSFORMER

3 HEATING ELEMENTS

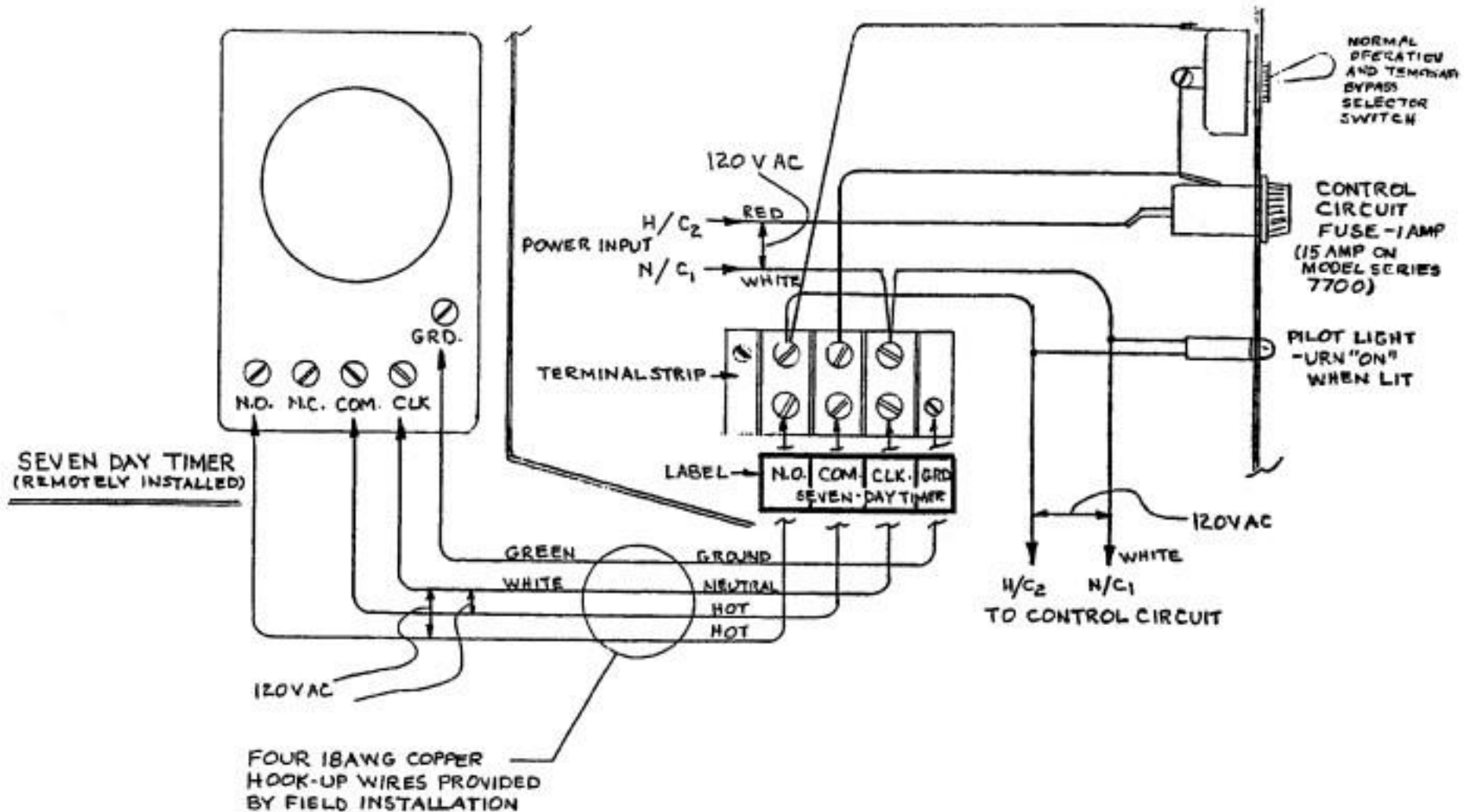


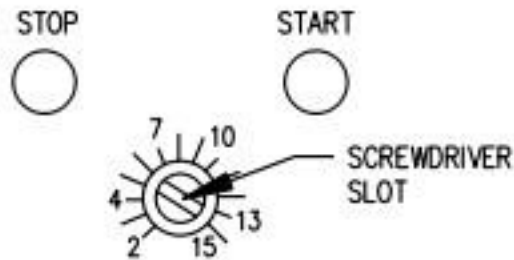
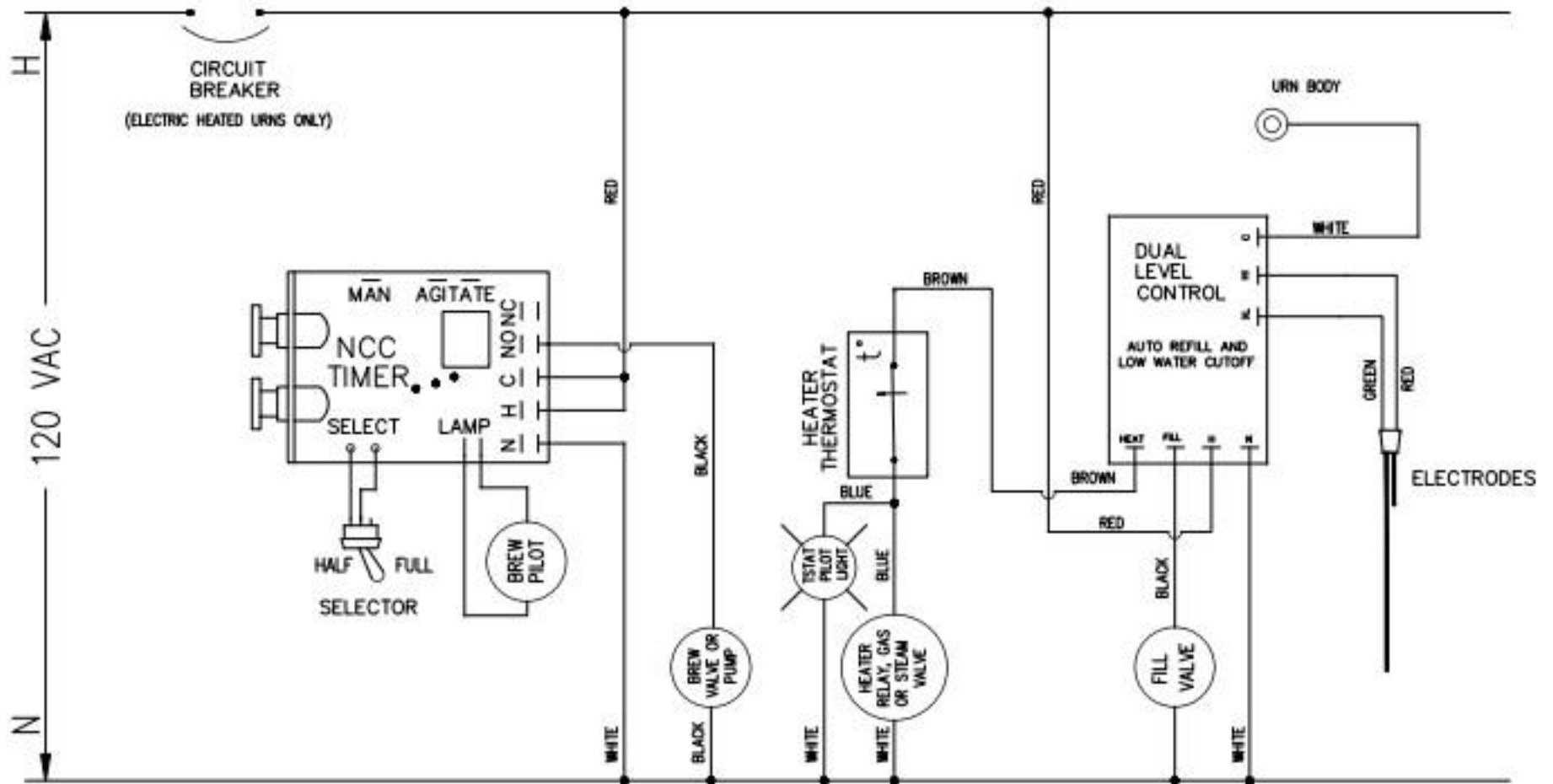
2 HEATING ELEMENTS - SINGLE PHASE ONLY  
 DO NOT WIRE 2 ELEMENTS 3 PHASE

ELECTRIC SERVICE	STANDARD PARTS
120/208/3Ø/4 WIRE 120/208/1Ø/3 WIRE 120/240/1Ø/3 WIRE	REQUIRES CIRCUIT BREAKER FOR CONTROL CIRCUIT PROTECTION. NEUTRAL TERMINAL BLOCK PROVIDED.
208/1Ø/2 WIRE 240/1Ø/2 WIRE 240/3Ø/3 WIRE 208/3Ø/3 WIRE	NO NEUTRAL TERMINAL BLOCK SUPPLIED. NON PUMP TYPE URNS INCLUDE STEPDOWN TRANSFORMER OR SEPARATE 120V CORD FOR CONTROL CIRCUIT. PUMP TYPE AND REMOTE DISPENSING URNS HAVE SEPARATE 120V CORD FOR CONTROL CIRCUIT.



TO CONTROL  
CIRCUIT ON  
LEFT END OR  
IN BASE OF URN,  
OR 3 WIRE, 120V AC  
CORD & PLUG.

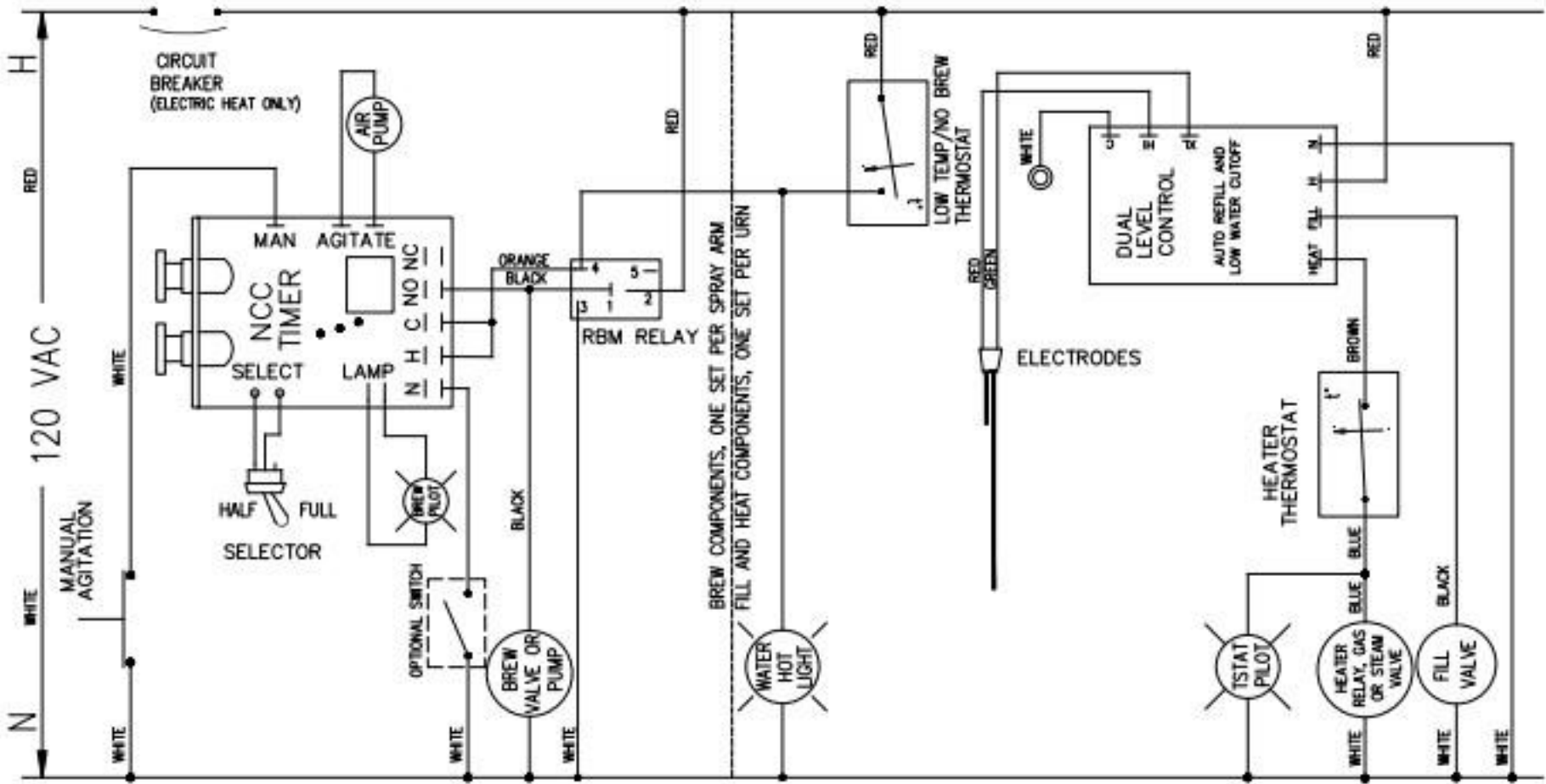




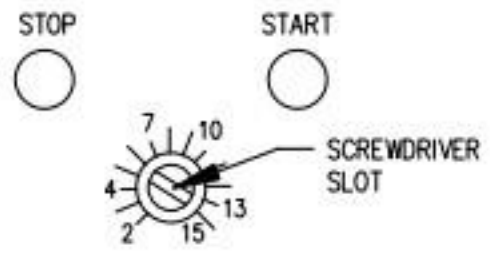
TIMER ADJUSTMENT UNDER  
SNAP PLUG ON CONTROL  
PANEL FACE

**NOTES:**

- 1) STEAM VALVE LEADS ARE BLACK OR RED.
- 2) USE THIS DIAGRAM FOR MODELS: 8215, OR CH SERIES, AND OTHER SINGLE OR TWIN URNS WITHOUT AGITATION.

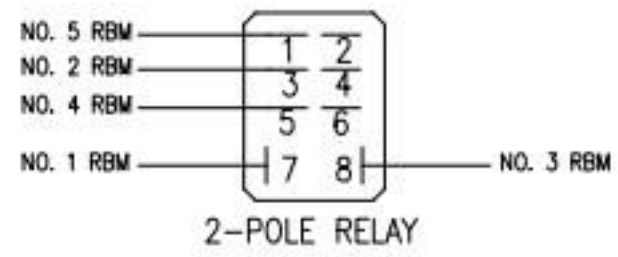


BREW COMPONENTS, ONE SET PER SPRAY ARM  
 FILL AND HEAT COMPONENTS, ONE SET PER URN

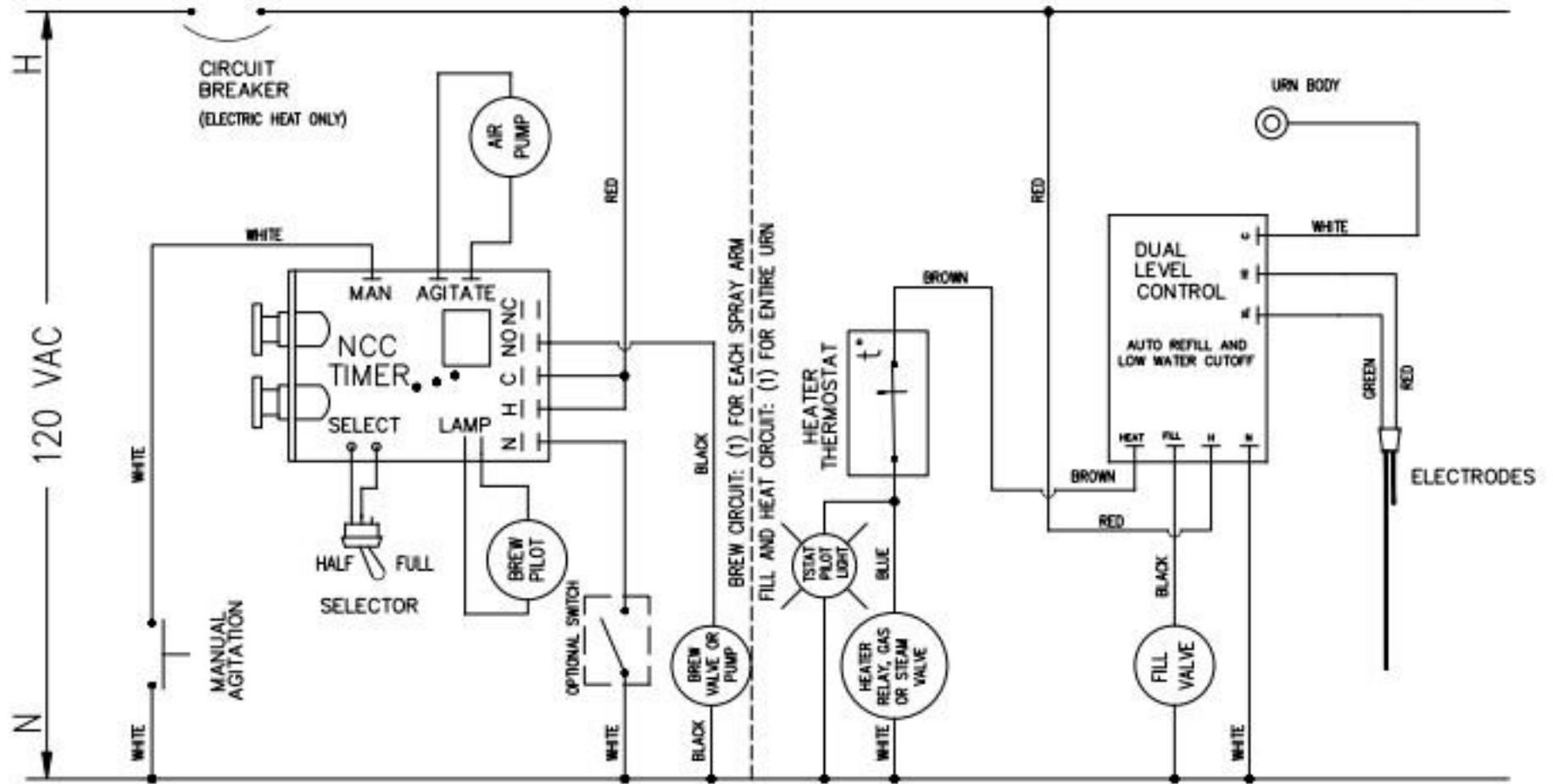


TIMER ADJUSTMENT UNDER  
 SNAP PLUG ON CONTROL  
 PANEL FACE

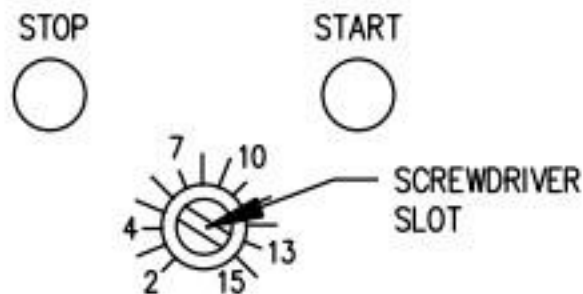
SWITCHING FROM RBM TO 2 POLE RELAY



NOTES:  
 1) STEAM VALVE LEADS ARE BLACK OR RED.



WIRING DIAGRAM  
 FOR 1, 2, OR 3 LINER URNS  
 AUTO AGITATION, 1/2 AND FULL BATCH  
 PUMP OR HEAT EXCHANGE  
 ELECTRIC, STEAM, OR GAS HEAT



TIMER ADJUSTMENT UNDER  
 SNAP PLUG ON CONTROL  
 PANEL FACE

NOTES:  
 1) STEAM VALVE LEADS ARE BLACK OR RED.