

# Parts Catalog



**S13A-16**

## **S-Series Slicer Standard Automatic Frozen Option**

**Model: S13A-16**

05/25/2021 Rev. AE

**IMPORTANT!**

TO EXPEDITE SHIPMENT OF PARTS, ALWAYS SPECIFY MODEL, REV,  
PART NUMBER, AND SERIAL NUMBER OF UNIT.

### **GLOBE FOOD EQUIPMENT COMPANY**

2215 East River Road  
Dayton, Ohio 45439

#### **Parts Department**

Toll Free 1-800-745-6238 · Fax (937) 290-0585

E-Mail: [info@globefoodequip.com](mailto:info@globefoodequip.com)

Website: [www.globefoodequip.com](http://www.globefoodequip.com)

Not for resale

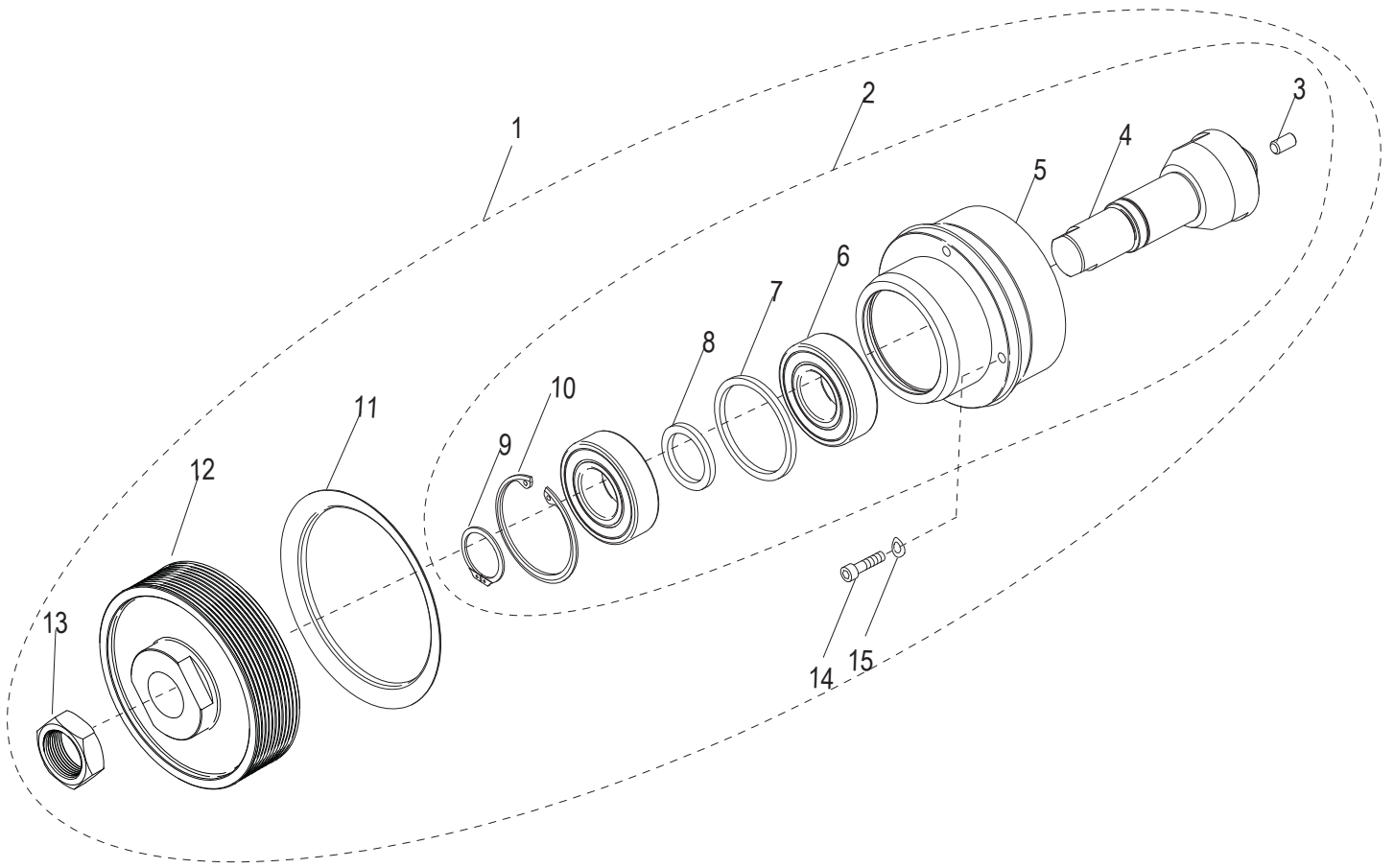


# Table of Contents

<b>Description</b>	<b>Page</b>
S13A-16 Knife Drive Assembly Components	4
S13A-16 Index Knob Components	6
S13A-16 Base Shroud Components	8
S13A-16 Gauge Plate Components	10
S13A-16 Auto Engage Lever Components	12
S13A-16 Index Slide Assembly Components	14
S13A-16 Ring Guard Assembly Components	16
S13A-16 Electrical Base Components	18
S13A-16 Knife Drive Motor Components	22
S13A-16 Transport Arm Assembly Components	24
S13A-16 Automatic Drive Assembly Components	28
S13A-16 Automatic Lift Lever Base Components	30
S13A-16 Carriage and End Weight Assembly Components	32
S13A-16 Knife and Knife Cover Components	34
S13A-16 Dummy Sharpener Assembly Components	36
S13A-16 Removable Carriage Components - Option	38
S13A-16 Knife Removal Tool - Option	40
S13A-16 Removable Knife Kit - Option	42
S13A-16 Removable Knife Drive Kit - Option	44
S13A-16 Wiring Schematic	46



# S13A-16 Knife Drive Assembly Components



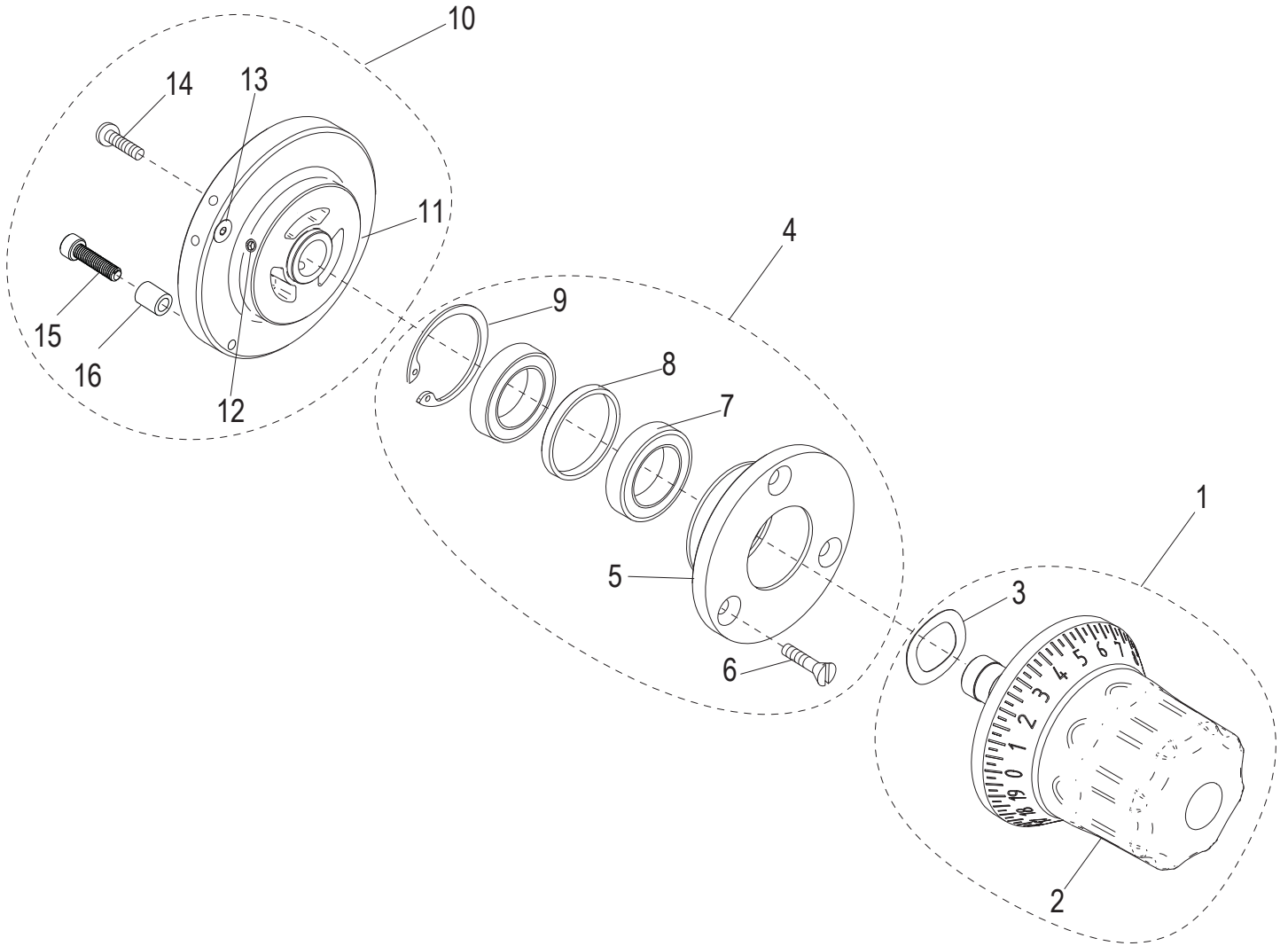


## S13A-16 Knife Drive Assembly Components

Item	Part Number	Description	Qty	Serial Number
1	450216	Frozen Knife Drive Kit (Incl. items 2-15)	1	
2	420088	Knife Drive Bearing Assembly (Incl. items 3-10)	1	
3	510078	Knife Cover Bumper	1	
4		Shaft, Knife Drive	1	
5		Knife Drive Bearing Mount	1	
6		Ball Bearing, Sealed	2	
7		Outer Ring, Bearing Spacer	1	
8		Inner Ring, Bearing Spacer	1	
9		Retaining Ring 5101-98 Bowed External	1	
10		Retaining Ring N5002-200	1	
11	520244	Knife Drive Boot	1	
12	450208	Pulley, Grooved, Knife Drive	1	
13	510033	Nut 7/8-20 Hex (Zinc)	1	
14	810229	Socket Hd. 1/4-20x3/4 Cap Screw, SST	4	
15	810275	Bellville Disc Spring Washer .255 ID x .50 OD	4	



# S13A-16 Index Knob Components



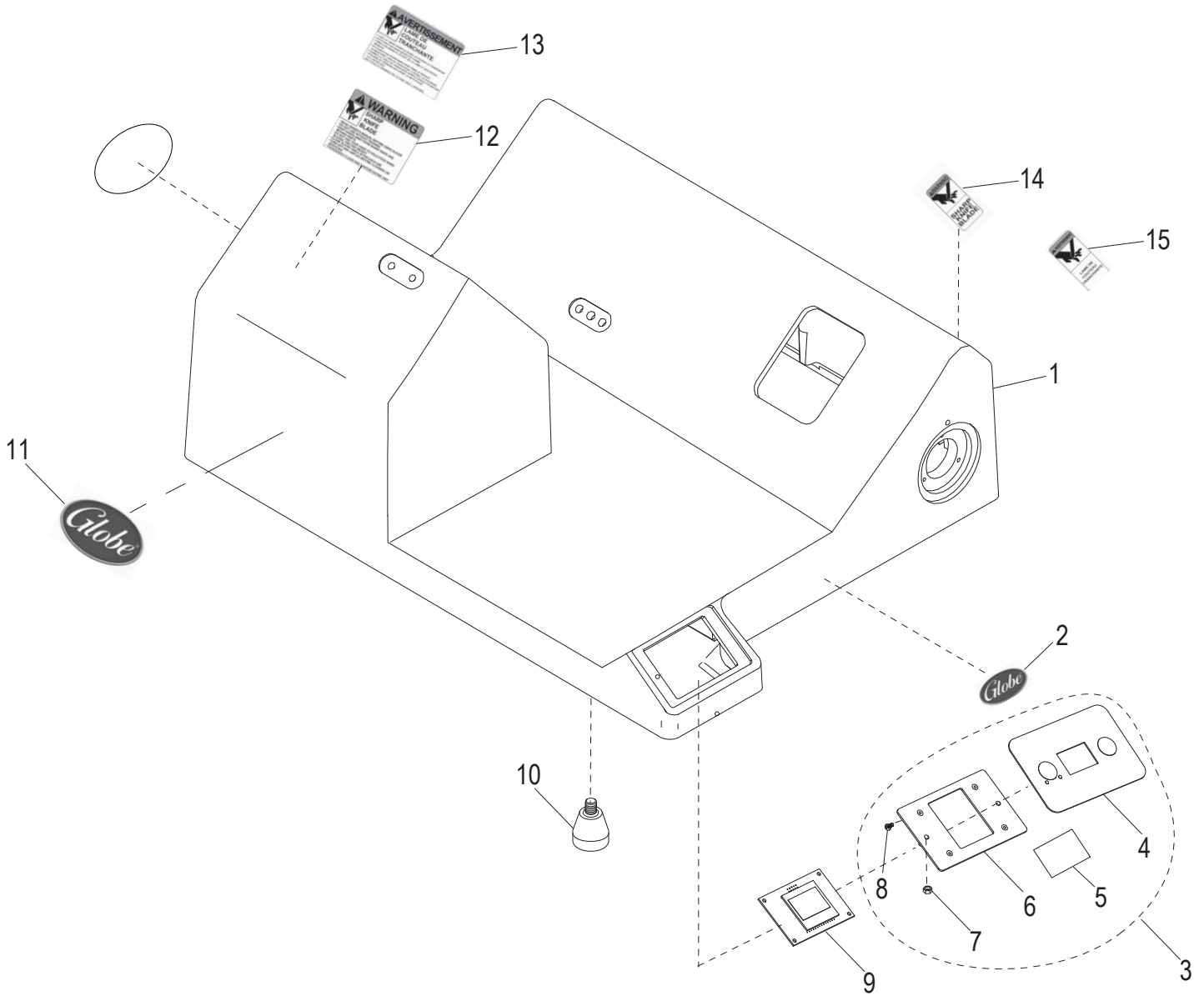


## S13A-16 Index Knob Components

Item	Part Number	Description	Qty	Serial Number
1	500044	Index Knob Assembly (Incl. items 2-3)	1	
2	500022	Index Knob	1	
3	800136	Index Knob Tension Spring	1	
4	450214	Index Bearing Hub Assembly Kit (Incl. items 5-9)	1	
5		Index Knob Bearing Hub	1	
6	800104	Mach. Screw #10-24x5/8 Flat Hd Slotted	3	
7		Index Knob Bearing	2	
8		Spacer, Index Bearing	1	
9		Beveled Retaining Ring	1	
10	500055	Frozen Index Cam Assembly w/Stop (Incl. items 11-16)	1	
11	520350	Index Cam	1	
12		Set Screw, Knurl Grip Cup Pt 1/4-28x3/4 (SST)	3	
13		Socket Cap Screw #10-32x3/4 Flat Hd (SS)	1	
14	800105	Socket Cap Screw #10-32x5/8 Button-Hd	1	
15	800155	Socket Cap Screw 10-32 x 3/4 Hd (SST)	1	
16	810005	Spacer #10 Screw	1	



# S13A-16 Base Shroud Components





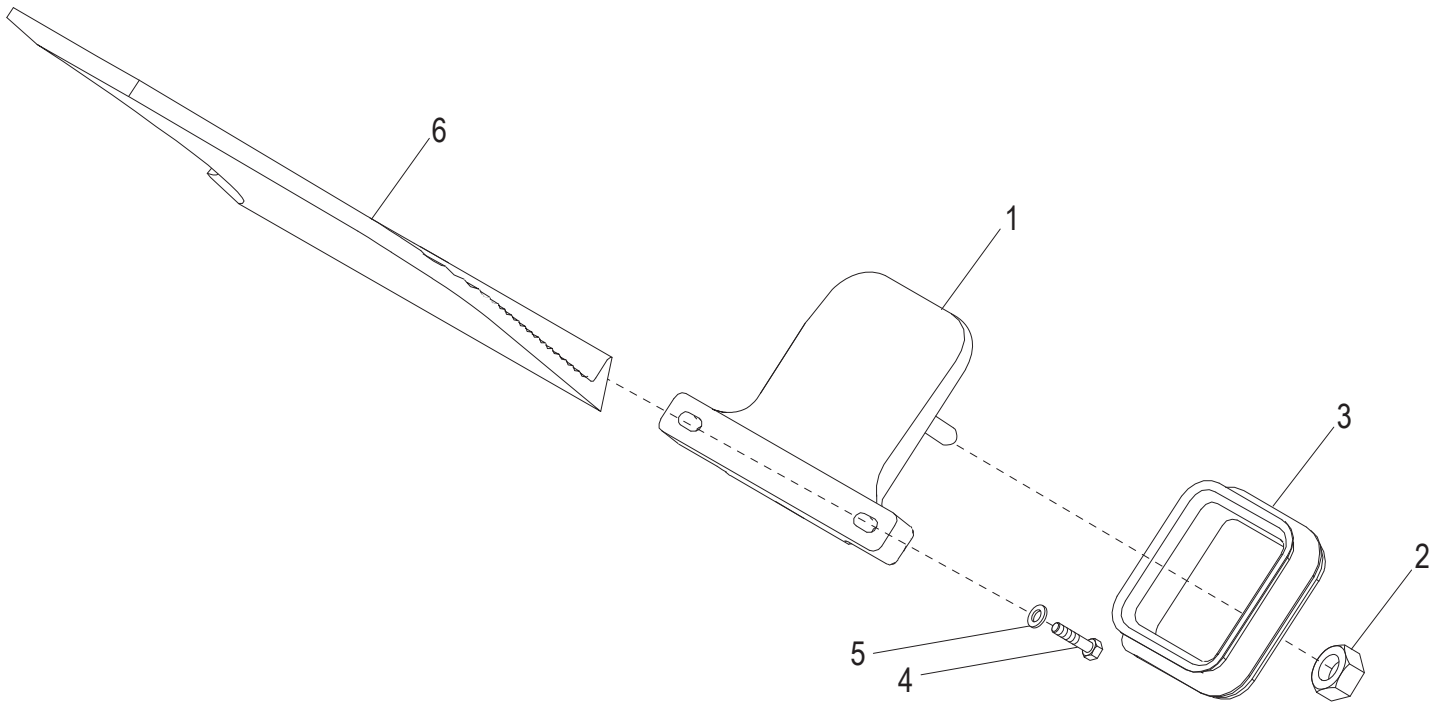
## S13A-16 Base Shroud Components

---

Item	Part Number	Description	Qty	Serial Number
1		Slicer Base	1	
2	<a href="#">871-2</a>	Globe Logo Decal 3.5"	1	
3	121071	Membrane Switch Kit (Incl. items 4-8)	1	
4		Membrane Switch, Smart Manual	1	
5	<a href="#">910088</a>	Pad, Alcohol Prep	1	
6		User Interface Panel, Smart/Auto	1	
7	<a href="#">810422</a>	Nylon Locknut 6-32	2	
8	<a href="#">810423</a>	Mach. Screw #4-40 x 1/4, 18-8 PH Cr (SST)	4	
9	<a href="#">121062</a>	Display Assembly	1	
10	<a href="#">510031</a>	Slicer Foot	4	
11	<a href="#">920202</a>	Globe Logo Decal, S-Series	2	
12	<a href="#">920200</a>	Warning Label, Large	1	
13	<a href="#">920198</a>	Warning Label, Large French	1	
14	<a href="#">920201</a>	Warning Label, Small	1	
15	<a href="#">920199</a>	Warning Label, Small French	1	



# S13A-16 Gauge Plate Components





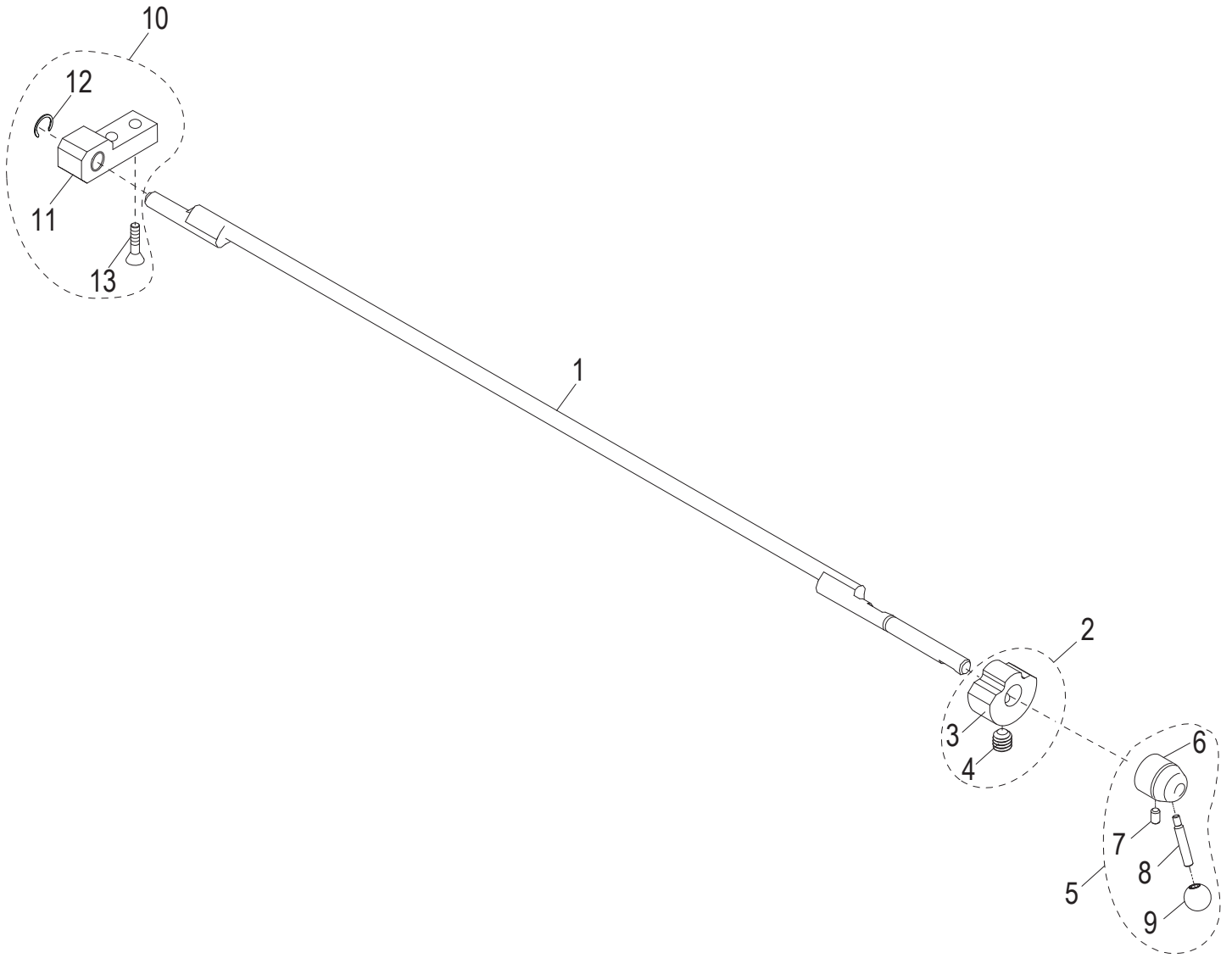
## S13A-16 Gauge Plate Components

---

Item	Part Number	Description	Qty	Serial Number
1	<a href="#">450212</a>	Gauge Plate Base Assembly	1	
2	<a href="#">450054</a>	Post Nut, Gauge Plate Ball Joint	1	
3	<a href="#">500001</a>	Gauge Plate Seal	1	
4	<a href="#">890411</a>	Cap Screw 3/8-16x1-1/2, Hex Hd with Nylon Patch	2	
5	<a href="#">810228</a>	Flat Washer, fits 3/8 Screw, .885 OD	2	
6	<a href="#">450070</a>	Gauge Plate	1	



# S13A-16 Auto Engage Lever Components





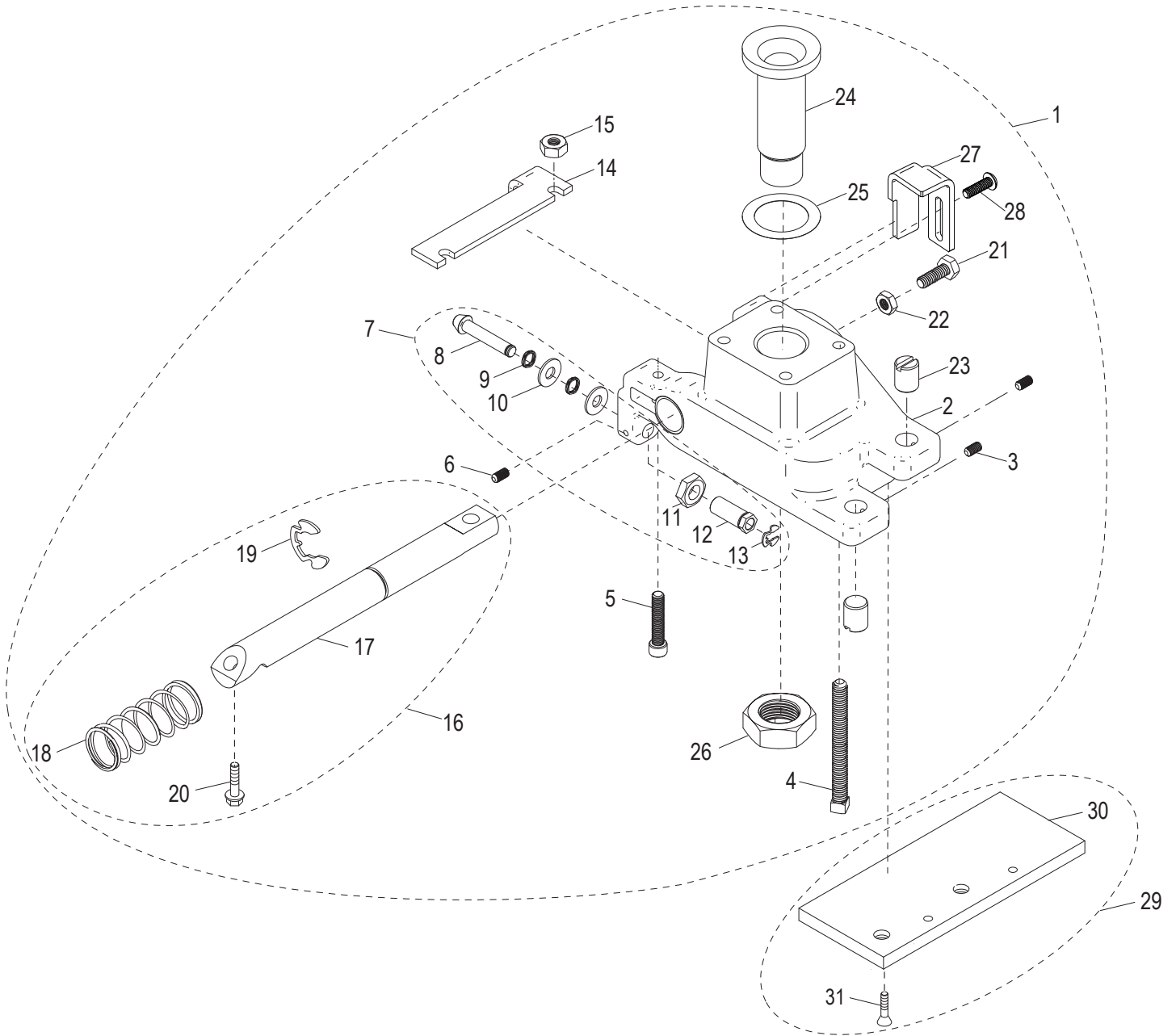
## S13A-16 Auto Engage Lever Components

---

Item	Part Number	Description	Qty	Serial Number
1	400021	Auto Engage Assembly Bar	1	
2	400038	Position Block Assembly (Incl. items 3-4)	1	
3		Auto Engage Position Block	1	
4		Socket Set Screw 1/4-20x1/4, 18-8 Cup Pt. (SST)	1	
5	500029	Auto Engage Lever Assembly (Incl. items 6-9)	1	
6		Auto Engage Lever Hub	1	
7		Set Screw 1/4-20x.42 Cup Point	1	
8		Handle Shaft	1	
9		Auto Engage Handle Knob	1	
10	400126	Bearing Block Assembly Kit (Incl. items 11-13)	1	
11		Bearing Block Assembly	1	
12	810429	Retaining Ring, 5304-31 (Klipring)	1	
13	810003	Screw 1/4-20x3/4 Crossed Rec., Flat Hd, Tapping	2	



# S13A-16 Index Slide Assembly Components





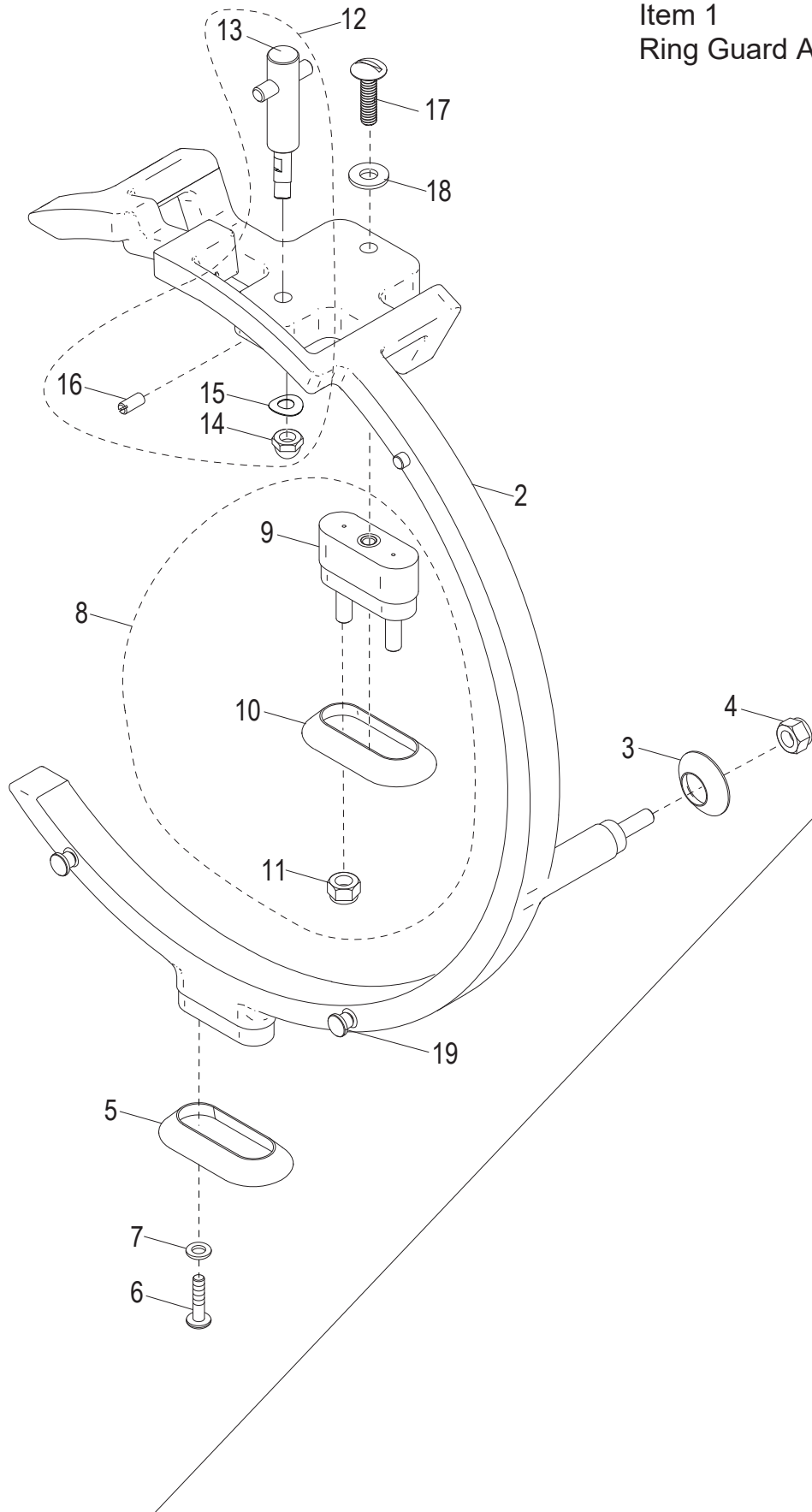
## S13A-16 Index Slide Assembly Components

Item	Part Number	Description	Qty	Serial Number
1	400140	Index Slide Kit (Incl. items 1-28)	1	
2		Index Slide with Bushings	1	
3	810400	Set Screw #10-32x3/8 Cup Pt.	2	
4	800146	Set Screw 5/16-18x3 Sq. Hd Cup Point	4	
5	800144	Cap Screw 1/4-28x1-1/4 Socket Hd	2	
6	800091	Set Screw #8-32 x 3/16 Knurled Grip - Cup Pt.	1	
7	400121	Cam Follower Kit (Incl. items 8-13)	1	
8		Follower	1	
9		Wave Spring Cam Follower	2	
10		Flat Washer .266 ID, .625 OD Type A	1	
11	890390	Jam Nut 3/8-24 Sharpener Wheel	1	
12		Follower Adjustment Post	1	
13	810379	Retaining Clip Ring 5304-18	1	
14		Stop Plate, Tilt Back	1	
15	800145	Nut 1/4-28 Hex	2	
16	400122	Index Slide Shaft Kit (Incl. items 17-20)	1	
17		Index Slide Shaft	1	
18		Index Spring	1	
19	800152	Retaining Ring (Klipring) 5304-75	1	
20	800058	Washer 5/16-18-1 Hex Hd Tapping Screw	2	
21	810431	Cap Screw 1/4-20 x 3/4 Hex Hd	1	
22	810432	Nut, Thin 1/4-20 Hex	1	
23	450057	Screw, Anti-Rotation	2	
24	450050	Ball Joint Rest	1	
25	800168	Gauge Plate Spacer Kit (Kit of 4)	1	
26	800043	Nut 7/8-14 UNF Hex Jam	1	
27	300154	Adjustment Stop	1	
28	800105	Socket Cap Screw #10-32x5/8 Button-Hd	2	
29	400128	Anti-Rotation Plate Kit (Incl. items 29-31)	1	
30		Anti-Rotation Plate	1	
31	810003	Screw 1/4-20x3/4 Crossed Rec., Flat Hd, Tapping	2	



# S13A-16 Ring Guard Assembly Components

Item 1  
Ring Guard Assembly



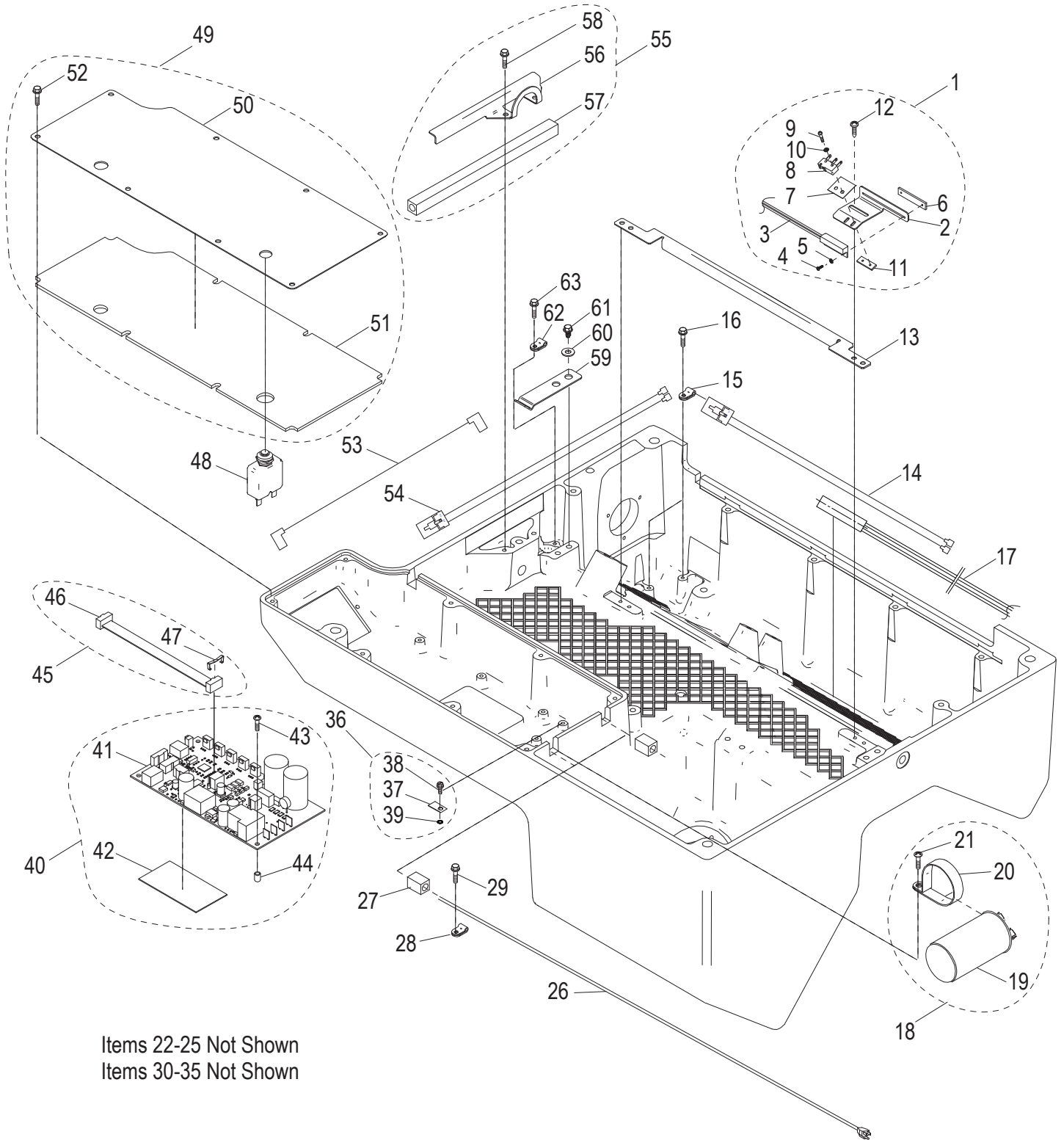


## S13A-16 Ring Guard Assembly Components

Item	Part Number	Description	Qty	Serial Number
1	500047-02	Ring Guard Assembly Kit (Incl. items 2-19)	1	
2	520316-02	Ring Guard	1	
3	520243	Round Boot, Ring Guard	1	
4	810438	Nylon-Insert Nut 1/4-20 Grade 5 Stl Zinc Plated	1	
5	520242	Oval Boot, Ring Guard	1	
6	810358	Mach. Screw 1/4-20x1 Truss Hd Slotted	2	
7	810345	Flat Washer 1/4 Screw Thread (18-8 SST)	2	
8	450213	Ring Guard Spacer Assembly (Incl. items 9-11)	1	
9	460064	Spacer, Ring Guard	1	
10	520242	Oval Boot, Ring Guard	1	
11	810438	Nylon-Insert Nut 1/4-20 Grade 5 Stl Zinc Plated	2	
12	460069	Sharpener Mount Assembly Kit (Incl. items 13-16)	1	
13		Sharpener Mount Assembly	1	
14	800185	Acorn Nut, 1/4-28 SST	1	
15	800184	Curved Disk Spring, 1/4" Rod Size	1	
16	810483	Slotted Set Screw 10-32	1	
17	810358	Mach. Screw 1/4-20x1 Truss Hd Slotted	1	
18	810345	Flat Washer 1/4 Screw Thread (18-8 SST)	1	
19	450130	Locator Pin	2	



# S13A-16 Electrical Base Components



Items 22-25 Not Shown  
Items 30-35 Not Shown



## S13A-16 Electrical Base Components

Item	Part Number	Description	Qty	Serial Number
1	121084-02	Cut/Auto Sensor Kit (Incl. items 2-12)	1	
2		Cut/Auto Engage Sensor Mount	1	
3		Sensor, Reed Switch, Cut Sensor	1	
4		Mach. Screw #1-64x1/4, 18-8 Pan Hd. Phillips (SST)	2	
5		Lock Washer #2 Internal Tooth	2	
6		Nut Plate	1	
7		Micro Switch Insulator	1	
8		Micro Switch, Pin Action	1	
9		Mach. Screw #2-56x7/16 Pan Hd. Phillips	2	
10		Lock Washer #2 Internal Tooth	2	
11		Nut Plate	1	
12	800069	Screw #8-32x3/8 Cross Rec. Pan Hd. Tapping	4	
13	310208	Inner Wireway Cover	1	
14	100122	Wiring Harness, Automatic Switch	1	
15	110226	Clamp, Nylon Loop	2	
16	800069	Screw #8-32x3/8 Cross Rec. Pan Hd. Tapping	2	
17	110107	Harness, Reed Switch, Knife Cover Sensor	1	
18	121082-01	Capacitor Clamp Kit (Incl. items 19-21)	1	
19		Capacitor, Knife Motor (120V)	1	
20	110228	Capacitor Clamp	1	
21	800069	Screw #8-32x3/8 Cross Rec. Pan Hd. Tapping	1	
22	121082-02	Capacitor Clamp Kit (Incl. items 23-25) Not Shown	1	
23		Capacitor, Knife Motor (220V) Not Shown	1	
24	110229	Capacitor Clamp Not Shown	1	
25	800069	Screw #8-32x3/8 Cross Rec. Pan Hd. Tapping Not Shown	1	
26	130225	Power Supply Cord, 120VAC, 15A	1	
27	510045-01	Sleeve, Large Diameter Wire	2	
28	110227	Strain Relief, Power Cord	1	
29	800057	Screw 1/4-20x.75 Hex Washer Hd Tapping	1	
30	130008-01	Power Cord (220V) Not Shown	1	
31		Power Supply Cord Not Shown	1	
32		Male Power Plug, Europe CEE7/7, 50Hz Not Shown	1	
33	130008-02	Power Cord (220V) Not Shown	1	
34		Power Supply Cord Not Shown	1	
35		Three Blade Male Plug, NEMA 3-15, 60Hz Not Shown	1	
36	121080	Ground Location Tab Kit (Incl. items 37-39)	1	
37		Ground Location Tab	1	
38		Screw, Green #8-32x5/16" SL Hex Washer Hd	1	
39		Lock Washer #8 External Tooth	1	
40	121088	(Incl. items 41-44)	1	
41		Control Board Assembly	1	
42	800175	Screw #8-32x3/4 Crossed Recessed Tapping	4	
43	810450	Self Retaining Spacer	4	
44	510050	Thermal Pad	1	
45	121081	Ribbon Cable Kit (Incl. items 46-47)	1	
46		Ribbon Cable Assembly	1	
47		Retaining Clip, Ribbon Cable	2	
48	140017-01	Circuit Breaker (120V)	1	
48	140017-02	Circuit Breaker (220V) Not Shown	1	
49	300063	Electronics Cover & Gasket Kit (Incl. items 50-52)	1	
50		Cover, Electronics	1	
51		Gasket, Electronic Cover	1	
52	800067	Screw #10-24x1/2 Hex Washer Hd Tapping	8	



## S13A-16 Electrical Base Components

---

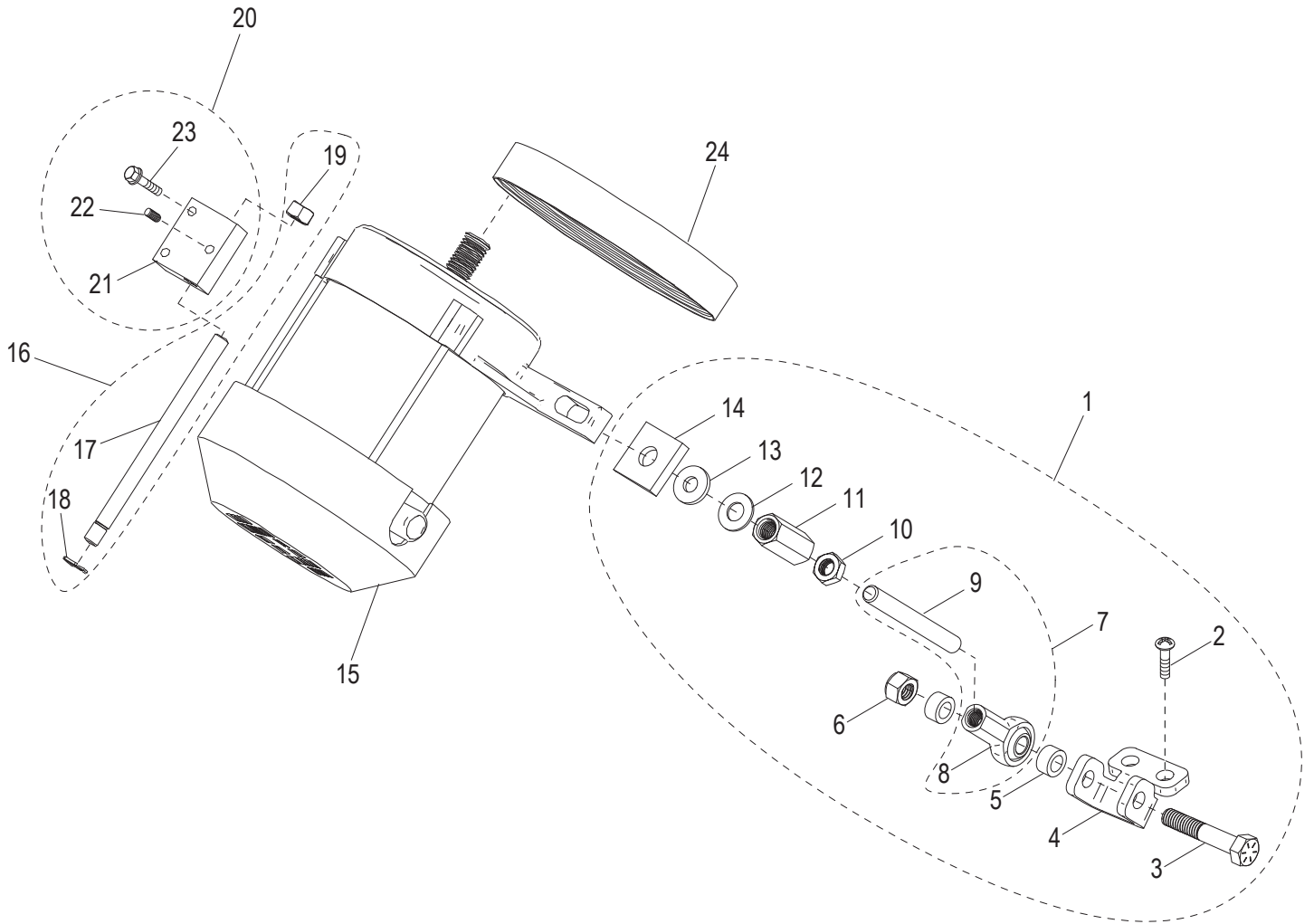
Item	Part Number	Description	Qty	Serial Number
53	100125	Wire Harness, Circuit Breaker	1	
54	100120	Wiring Harness, Carriage Tilt Sensor	1	
55	300067	Front Wireway Cover Kit (Incl. items 56-58)	1	
56		Cover, Front Wireway	1	
57	510045-02	Sleeve, Large Diameter Wire	1	
58	800067	Screw #10-24x1/2 Hex Washer Hd Tapping	2	
59	300019	Auto Engage Position Leaf Spring	1	
61	800057	Screw 1/4-20x.75 Hex Washer Hd Tapping	2	
60		Washer 1/4 Flat	4	
62	110230	Nylon Loop Clamp 5/16	1	
63	800069	Screw #8-32x3/8 Cross Rec. Pan Hd. Tapping	1	



*INTENTIONALLY LEFT BLANK PAGE*



# S13A-16 Knife Drive Motor Components



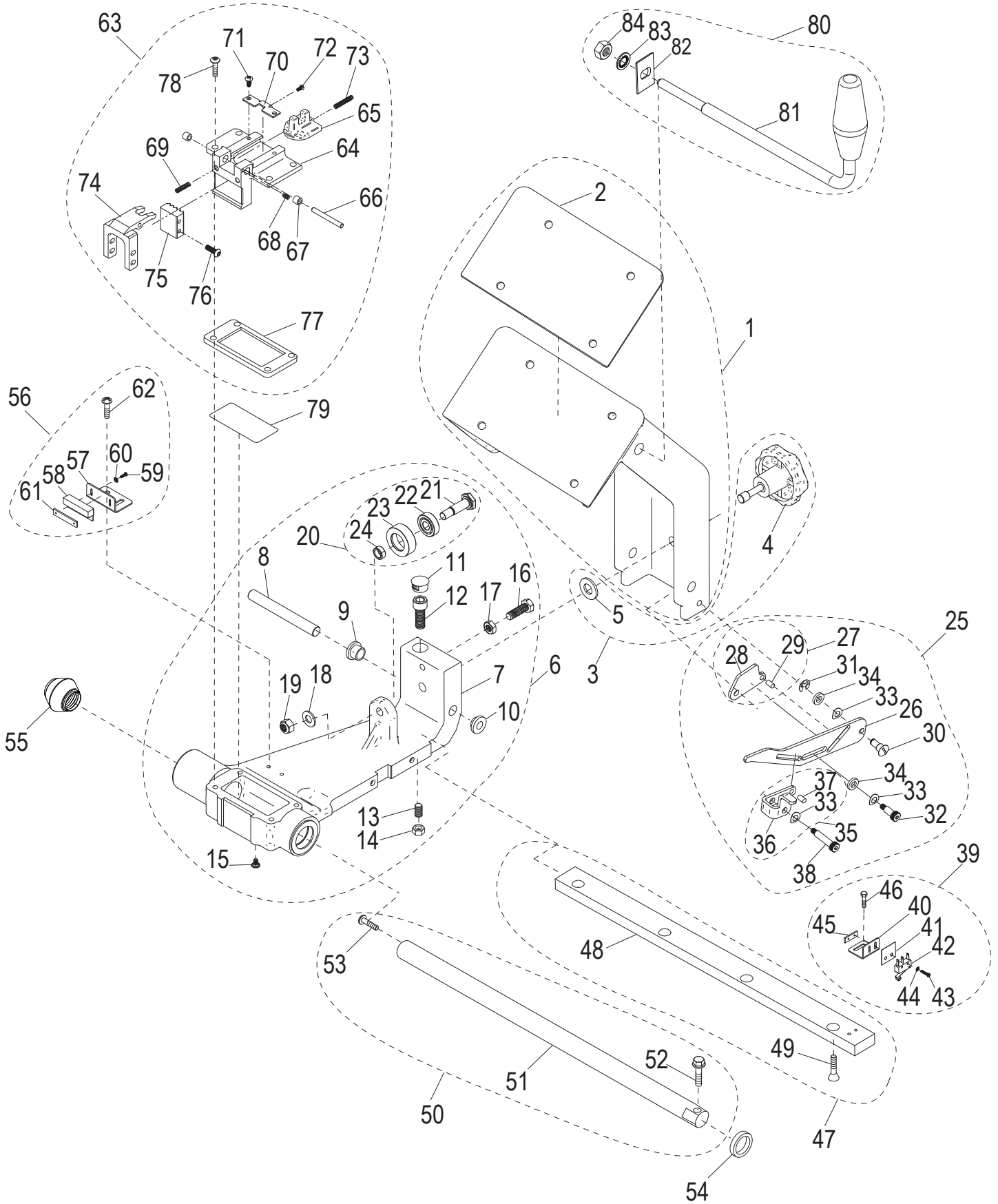


## S13A-16 Knife Drive Motor Components

Item	Part Number	Description	Qty	Serial Number
1	400124	Knife Tensioner Kit (Incl. items 2-14)	1	
2	800135	Thread Forming Screw 1/4-20x5/8 PHP	2	
3		Cap Screw 5/16-18 x 1-3/4, Grade 8 Hex Hd	1	
4		Knife Motor Tensioner Bracket	1	
5		Sleeve Spacer	2	
6	810420	Nyloc Nut 5/16-18, Grade 5	1	
7	400125	Threaded Ball Joint, Knife Tensioner (Incl. items 8-9)	1	
8		Ball Joint Rod End 5/16'-24 Thd	1	
9		Tension Shaft 5/16-24 x 3 Full Thread	1	
10		Nut 5/16-24 UNF Zinc Plated Steel Hex Jam	1	
11		Nut 5/16-24x1 Hex Coupling	1	
12	810416	Flat Washer 5/16 (Zinc)	1	
13	810417	Washer 5/16 Neoprene	1	
14	800161	Washer 5/16 Leveling	1	
15	120158-01	Knife Drive Motor, Single Phase, 120V, 60Hz	1	
15	120158-02	Knife Drive Motor, Single Phase, 220V, 60Hz Not Shown	1	
15	120158-03	Knife Drive Motor, Single Phase, 220V, 50Hz Not Shown	1	
16	400113	Motor Mount Pivot Rod Assembly (Incl. items 17-19)	1	
17		Motor Mount Pivot Rod	1	
18	810429	Retaining Ring, 5304-31 (Klipring)	1	
19	810420	Nyloc Nut 5/16-18, Grade 5	1	
20	400123	Motor Pivot Block Kit (Incl. items 21-23)	1	
21		Motor Pivot Block	1	
22	800094	Set Screw #10-32x1/4, Knurl-Grip Cup Pt.	1	
23	800068	Washer #10-24x1 Hex Hd Tap. Screw Slotted	2	
24	800092	Knife Drive Belt	1	



# S13A-16 Transport Arm Assembly Components





## S13A-16 Transport Arm Assembly Components

Item	Part Number	Description	Qty	Serial Number
1	400129	Carriage Arm & Gasket Kit (Incl. item 2)	1	
2	500004	Carriage Arm Gasket	1	
3	500052	Carriage Knob & Captive Clip Kit (Incl. items 4-5)	1	
4		Carriage Arm Tie Down Knob	1	
5	800180	Washer, Nylon	1	
6	400115	Transport Replacement Assembly (Incl. items 7-24)	1	
7		Transport with Bushings	1	
8	400017	Transport Attachment Pin	1	
9		Shoulder Washer .51 IDx.88 Nylon	1	
10		Shoulder Washer .51 IDx1.125 Nylon	1	
11		Dome Plug for 5/8 Hole	1	
12		Socket Hd Cap Screw 3/8-16 x 1 (SST)	1	
13	800015	Transport Tie Down Screw	1	
14	800048	Nut 5/16-24 Hex UNF Thread (Zinc Plated Steel)	1	
15		Mach. Sealing Screw 8-32x1/4 PH Phillips	1	
16	810406	Hex Cap Screw 5/16-24x1,18-8 (SST)	1	
17		Shoulder Washer .51 IDx1.125 Nylon	1	
18	810272	Flat Washer 5/16 Screw Size (SST)	1	
19	810420	Nyloc Nut 5/16-18, Grade 5	1	
20	800014	Roller Bearing Assembly (Incl. items 21-24)	1	
21		Roller Bearing Bolt	1	
22		Roller Bearing	1	
23		Bearing Sleeve	1	
24		Spacer Sleeve	1	
25	300069	Transport Interlock Kit (Incl. items 26-38)	1	
26		Transport Slide Lock Plate	1	
27		Lock Plate Assembly (Incl. items 28-29)	1	
28		Lock Plate	1	
29		Dowel Pin, 5/32 x 5/16 (SST)	1	
30		Reverse Shoulder Bolt	1	
31		E-Clip Retaining Ring for 1/4" Shaft	1	
32		Shoulder Bolt 1/4" x 1/2", #10-32 Thread	1	
33		Curved Disk Spring .265 ID,.490 OD,.011 Thick	3	
34		Washer, Nylon .265 ID, .50 OD, .094 Thick	2	
35		Cam Lock Plate Assembly (Incl. items 36-37)	1	
36		Cam Lock Plate	1	
37		Dowel Pin, 5/32 x 5/16 (SST)	1	
38		Shoulder Bolt 1/4" x 1", #10-32 Thread	1	
39	121089	Carriage Tilt Switch Kit (Incl. items 40-46)	1	
40		Carriage Tilt Back Sensor Mount	1	
41		Micro Switch Insulator	1	
42		Micro Switch	1	
43		Mach. Screw #2-56x7/16 Pan Hd. Phillips	2	
44		Lock Washer #2 Internal Tooth	2	
45		Nut Plate	1	
46	800099	Mach. Screw #8-32x3/8 Hex Hd	2	
47	400131	Transport Roller Bar Kit (Incl. items 48-49)	1	
48		Transport Roller Bar	1	
49	810004	Tapping Screw 1/4-20x1 Cross Rec. FH	4	
50	400132	Transport Shaft Kit (Incl. items 51-53)	1	
51		Transport Shaft	1	
52	800059	Washer 5/16-18x1.25 Hex Hd Tapping Screw	1	
53	800071	Mach. Screw 5/16-18x1 Truss Hd Slotted	1	



## S13A-16 Transport Arm Assembly Components

Item	Part Number	Description	Qty	Serial Number
54	500005	Transport Bumper	1	
55	800131	Sleeved Spring Assembly	1	
56	121090	Carriage Magnet Kit (Incl. items 57-62)	1	
57		Transport Switch Magnet Mount	1	
58		Magnet	1	
59		Mach. Screw #1-64x1/4, 18-8 Pan Hd. Phillips (SST)	2	
60		Lock Washer #2 Internal Tooth	2	
61		Nut Plate	1	
62	800069	Screw #8-32x3/8 Cross Rec. Pan Hd. Tapping	2	
63	400130	Auto Engage Pickup Kit (Incl. items 64-78)	1	
64		Transport Auto Engage	1	
65		Auto Engage Slide	1	
66		Auto Engage Pivot Dowel	1	
67		Sleeve Bushing	1	
68	810473	Set Screw, 8-32x3/8, Brass Tip Dog Point (SST)	1	
69		Clamp Release Spring	1	
70		Auto Engage Spring Stop Bracket	1	
71	800069	Screw #8-32x3/8 Cross Rec. Pan Hd. Tapping	1	
72	810423	Mach. Screw #4-40 x 1/4, 18-8 PH Cr (SST)	1	
73		Slide Spring	1	
74		Auto Engage Pivot Lever	1	
75		Auto Engage Belt Clamp	1	
76	800105	Socket Cap Screw #10-32x5/8 Button-Hd	1	
77	510058	Oil Well Gasket	1	
78	800109	Screw 1/4-20x.50 Button Hd Cap	4	
79	800053	Felt Insert	1	
80	400114	Carriage Arm Handle Assembly with Nut (Incl. items 81-84)	1	
81		Carriage Arm Handle	1	
82	400155	Anti Rotation Block	1	
83	810226	Lock Washer, 1/2 Screw Size, Internal Tooth	1	
84	810224	Hex Nut, 1/2-13 Left Hand, Thread	1	

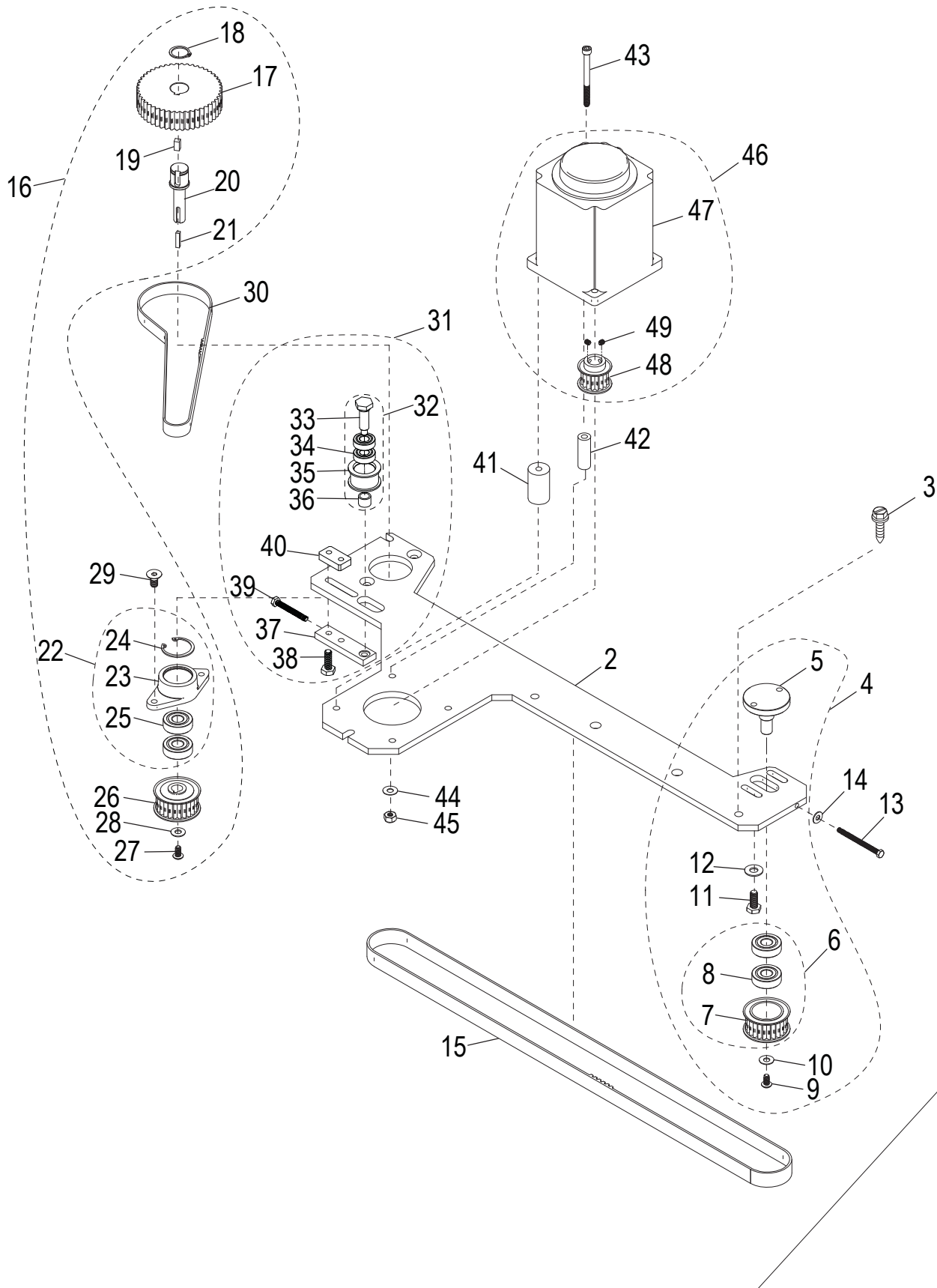


*INTENTIONALLY LEFT BLANK PAGE*



# S13A-16 Automatic Drive Assembly Components

Item 1  
Automatic Drive Kit



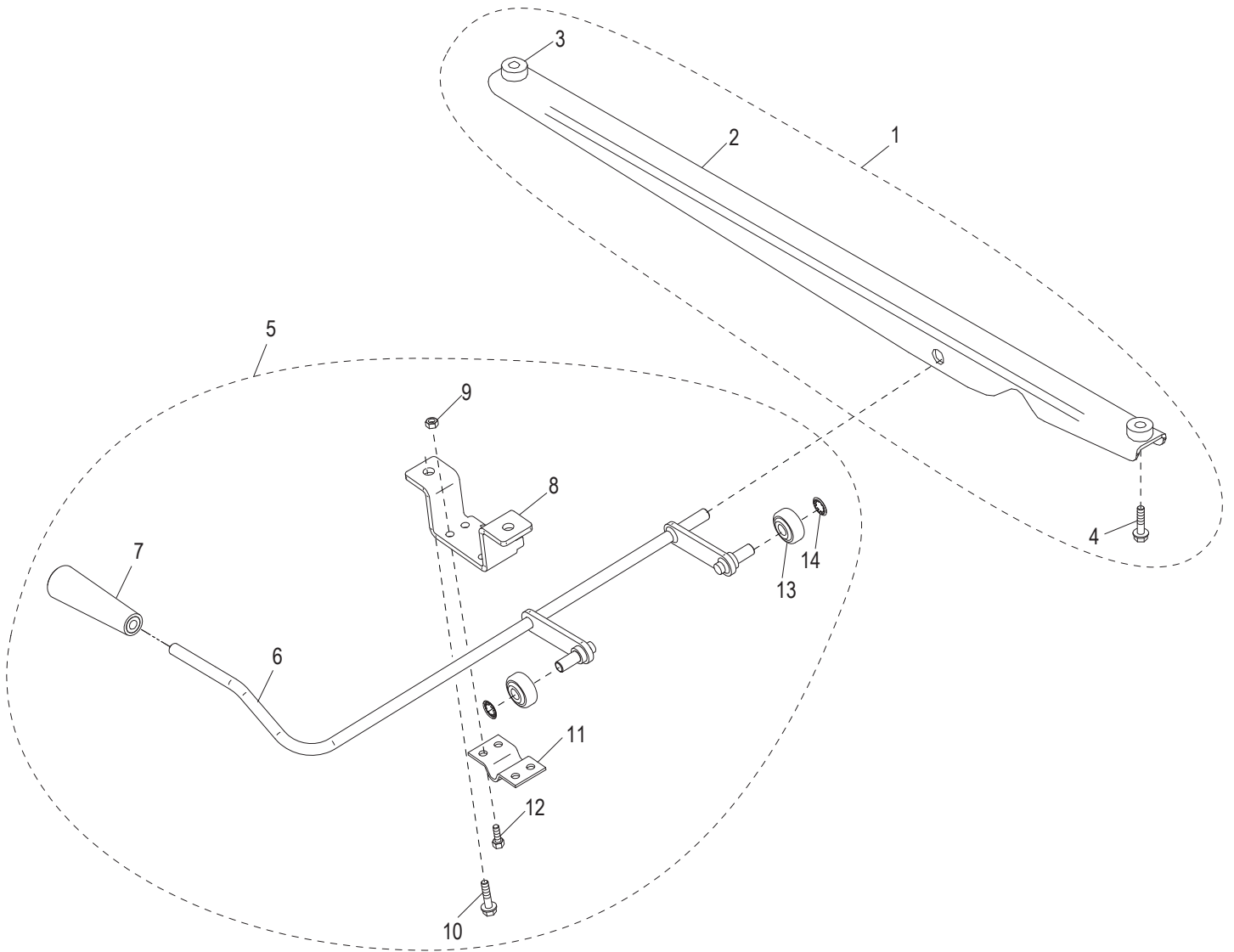


## S13A-16 Automatic Drive Assembly Components

Item	Part Number	Description	Qty	Serial Number
1	400133	Automatic Drive Kit (Incl. items 2-49)	1	
2		Automatic Base Plate	1	
3	800057	Screw 1/4-20x.75 Hex Washer Hd Tapping	4	
4	400143	Idler Assembly Kit (Incl. items 5-12)	1	
5		Pulley Shaft	1	
6	450097	Idler Assembly (Incl. items 7-8)	1	
7		Idler Pulley (24 Tooth)	1	
8		Bearing 6000 Double Seal	2	
9	800077	Mach. Screw #10-24x3/8 Button Hd Cap (SST)	1	
10	800076	Washer #10 Flat (18-8 SST)	1	
11	800072	Bolt 1/4-20x5/8' Hex	2	
12		Washer 1/4 Flat	2	
13	800088	Mach. Screw #8-32x2 Hex Hd (SS)	1	
14	870072	#8 Flat Washer, SST	1	
15	800008	Automatic Driven Belt	1	
16	400141	48/24 Tooth Drive Pulley Kit (Incl. items 17-29)	1	
17		Drive Pulley (48 Tooth)	1	
18		Retaining Ring 5100-62 External	1	
19		Key, 3/16x3/16 Drive	1	
20		Shaft, Dual Pulley	1	
21		Key, 1/8x1/8 Drive	1	
22	450096	Bearing Block Assembly (Incl. items 23-25)	1	
23		Bearing Block	1	
24		Retaining Ring N5002-102 Internal	1	
25		Bearing 6000 Double Seal	2	
26	450093	Drive Pulley (24 Tooth)	1	
27	800077	Mach. Screw #10-24x3/8 Button Hd Cap (SST)	1	
28	800076	Washer #10 Flat (18-8 SST)	1	
29		Screw 1/4-20x1/2 Socket Flat Countersunk Hd Cap	2	
30	800009	Automatic Drive Belt	1	
31	400154	Belt Tension Kit (Incl. items 32-40)	1	
32	400151	Belt Tensioner Assembly	1	
33		Tension Pulley Shaft	1	
34		Bearing, Tension	2	
35		Tension Sleeve	1	
36		Spacer	1	
37		Tensioner Bar	1	
38	810431	Cap Screw 1/4-20 x 3/4 Hex Hd	2	
39	810007	Screw, Machine #10-32x1-1/2 Hx Hd Drive	1	
40	400150	Nut Plate	1	
41	450090	Standoff, Automatic Motor	3	
42	450091	Standoff, Automatic Motor	1	
43	800074	Screw #10-24x2.25 Socket Hd Cap	4	
44	800076	Washer #10 Flat (18-8 SST)	4	
45	800075	Nut #10-24 Hex	4	
46	400144	Carriage Drive Motor Kit (Incl. items 46-49)	1	
47	120160	Carriage Drive Motor (BLDC)	1	
48		Motor Drive Pulley (16 Tooth)	1	
49	800091	Set Screw #8-32 x 3/16 Knurled Grip - Cup Pt.	2	



# S13A-16 Automatic Lift Lever Base Components





## S13A-16 Automatic Lift Lever Base Components

Item	Part Number	Description	Qty	Serial Number
1	300066	Lift Lever Base Support Kit (Incl. items 2-4)	1	
2		Lift Lever Base Support	1	
3	400037	Lift Lever Base Support Post	2	
4	800057	Screw 1/4-20x.75 Hex Washer Hd Tapping	2	
5	400134	Lift Lever Assembly Kit (Incl. items 7-14)	1	
6		Lift Lever Weldment	1	
7		Lift Lever Handle	1	
8	300078	Lift Lever Support & Stop	2	
9	810438	Nylon-Insert Nut 1/4-20 Grade 5 Stl Zinc Plated	4	
10	800058	Washer 5/16-18-1 Hex Hd Tapping Screw	2	
11	300030	Lift Lever Bracket	1	
12	800072	Bolt 1/4-20x5/8' Hex	4	
13		Lift Lever Roller	2	
14		Retaining Ring 5115-37 Push-On External	2	



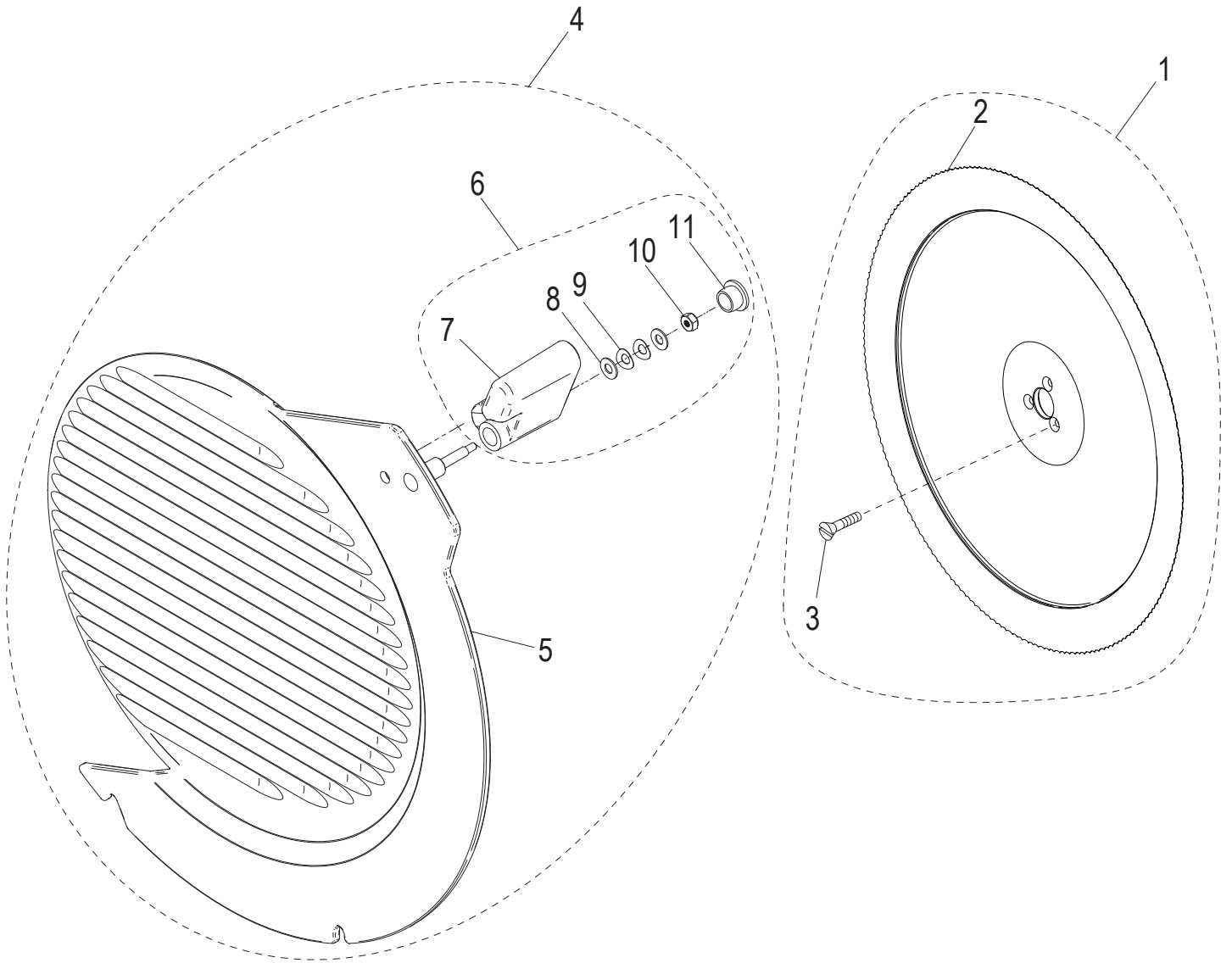


## S13A-16 Carriage and End Weight Assembly Components

Item	Part Number	Description	Qty	Serial Number
1	400138	Carriage Assembly Kit (Incl. items 2-18)	1	
2	400012	Carriage Insert Assembly	1	
3	920196	Carriage Tilt Label	1	
4	920197	Carriage Tilt Label (French)	1	
5	800085	Washer 1/4" Screw, Self Aligning	4	
6	800188	Custom Nut, 1/4-20	4	
7	450158	End Weight Shaft Assembly	1	
8	400135	Rod Mount Kit End Weight (Incl. items 9-10)	1	
9		End Weight Rod Mount	1	
10	800037	Mach. Screw 1/4-20 x 5/8 FH Slotted	2	
11	400136	End Weight Stop Kit (Incl. items 12-14)	1	
12		End Weight Stop	1	
13	800038	Mach. Screw 1/4-20 x 5/8 RH Slotted	2	
14	800205	Stop Pin, Delrin End Weight	1	
15	500046	Thumb Guard Assembly (Incl. items 16-18)	1	
16		Carriage Thumb Guard	1	
17	510038	Carriage Thumb Guard Gasket	1	
18	810366	Thumb Guard Screw	4	
19	500027	End Weight Assembly (Incl. items 20-26)	1	
20	420065	End Weight Arm Assembly	1	
21	500024	End Weight Handle	1	
22	800164	End Weight Face Washer Kit (Incl. items 23-24)	1	
23		Washer .04 mm thick End Weight Face	1	
24		Washer .01 mm thick End Weight Face	4	
25	500007	Molded End Weight Assembly	1	
26	800047	Delrin 1/8 Dia x 3/8 Pin	1	



# S13A-16 Knife and Knife Cover Components





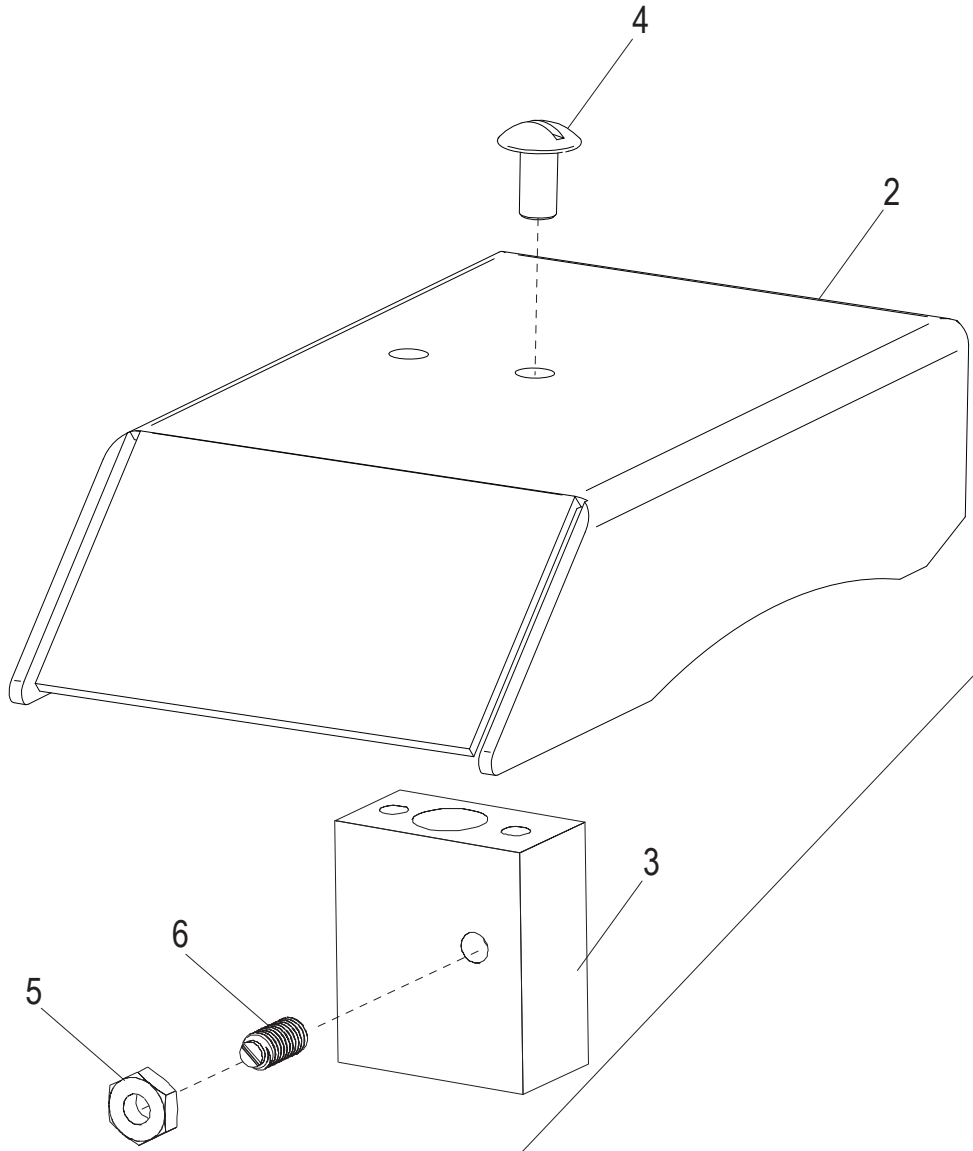
## S13A-16 Knife and Knife Cover Components

Item	Part Number	Description	Qty	Serial Number
1	400156	Frozen Knife Kit (Incl. items 2-3)	1	
2	450198	Knife, 13" Steel, Frozen, Serrated	1	
3	810274	Mach. Screw, Flat Hd Slotted 10-32x1/2 (SST)	3	
4	250247	Knife Cover Assembly (Incl. items 5-11)	1	
5	460090	Knife Cover Sub-Assembly	1	
6	500045	Knife Cover Swivel Lock Assembly (Incl. items 7-11)	1	
7		Knife Cover Swivel Lock	1	
8		Flat Washer #10 Thin Profile	2	
9		Curved Disk Spring	2	
10		Nut, 6-32 INC-2B Hex, with Nylon Insert	1	
11	520237	Barrel Plug, Push-In	1	



# Dummy Sharpener Assembly

Item 1  
Dummy Sharpener Assembly





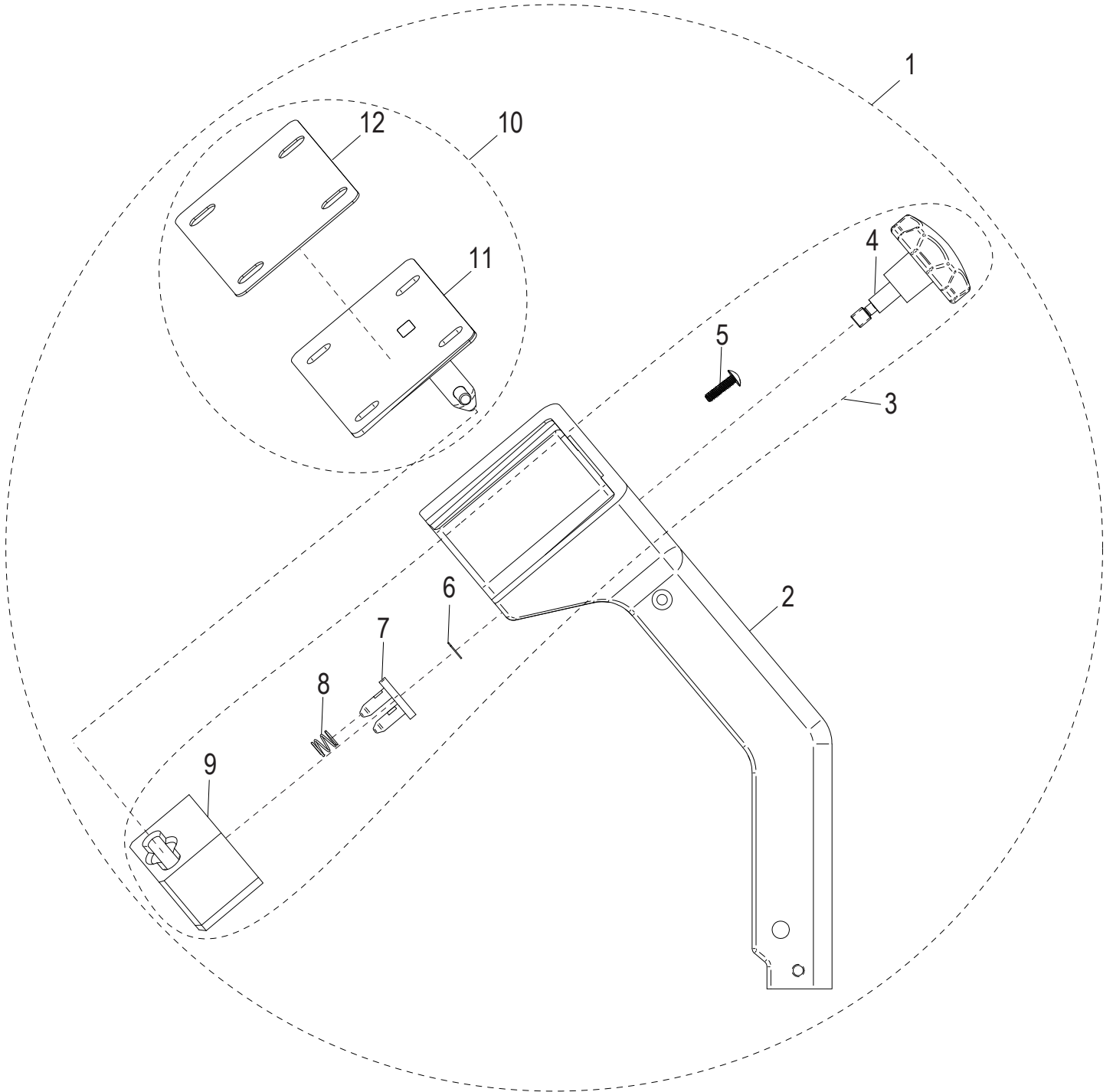
## Dummy Sharpener Assembly

---

Item	Part Number	Description	Qty	Serial Number
1	310235	Dummy Sharpener Assembly	1	
2		Dummy Sharpener Top	1	
3		Dummy Sharpener Base	1	
4	762-6	Mach. Screw 1/4-20 x .50	2	
5		Thin Hex Nut, 1/4-28	1	
6		Slotted Ball Plunger, 1/4-28 SST	1	



# S13A-16 Removable Carriage Components - Option





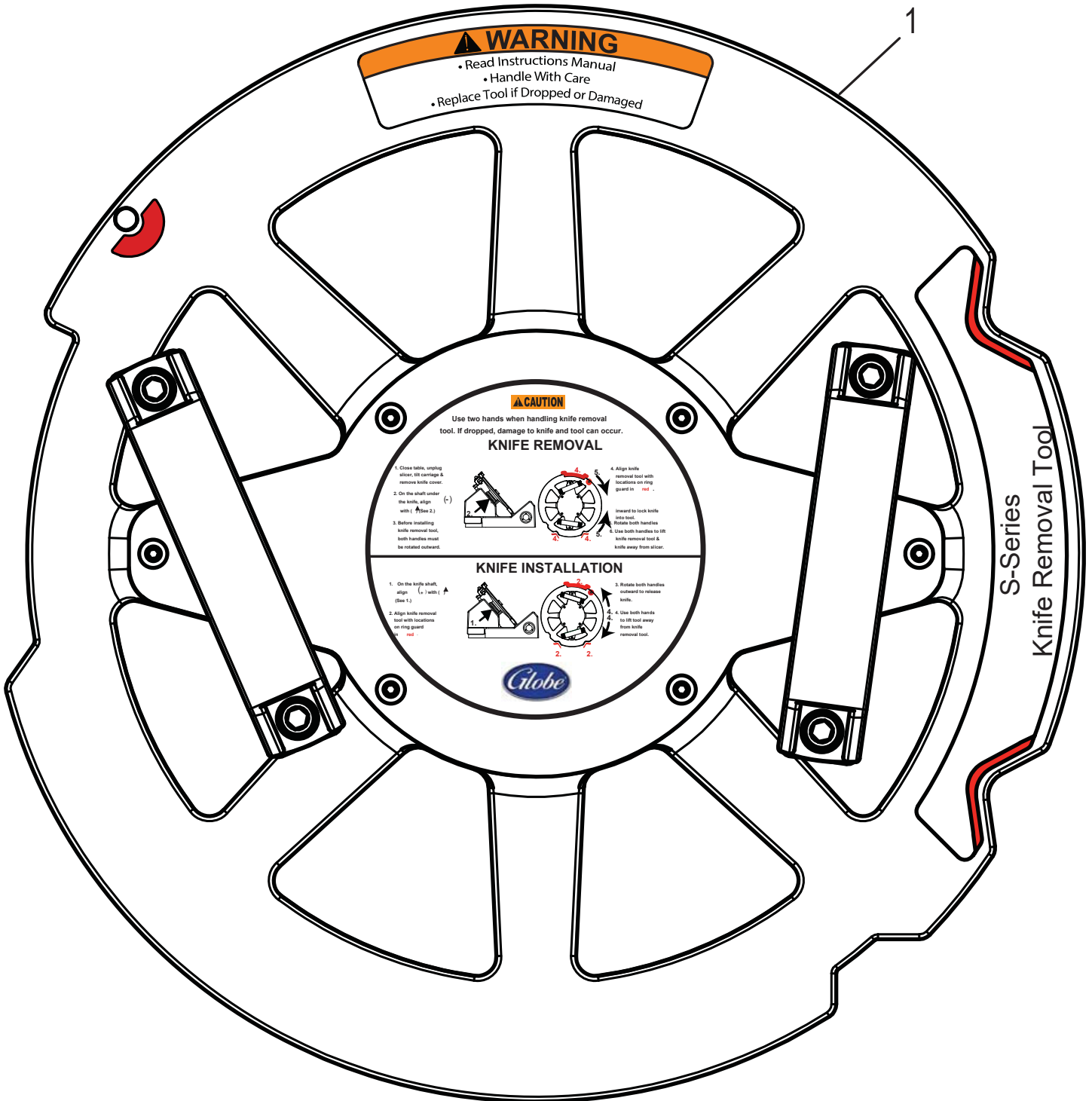
## **S13A-16 Removable Carriage Components - Option**

---

<b>Item</b>	<b>Part Number</b>	<b>Description</b>	<b>Qty</b>	<b>Serial Number</b>
1	<a href="#">450221</a>	Removable Carriage Arm Assembly Kit	1	
2	<a href="#">450217</a>	Carriage Arm for Removable Carriage	1	
3	<a href="#">450220</a>	Removable Carriage Mechanism Assembly Kit	1	
4	<a href="#">500056</a>	Removable Carriage Knob Assembly	1	
5	<a href="#">810358</a>	Mach. Screw 1/4-20x1 Truss Hd Slotted	2	
6		Lock Out Assembly	1	
7		Compression Spring	2	
8		E-Clip Retaining Ring for 1/4" Shaft	1	
9	<a href="#">420103</a>	Guide Block	1	
10	<a href="#">450219</a>	Removable Carriage Attachment Assembly Kit	1	
11		Carriage Attachment Assembly	1	
12	<a href="#">500057</a>	Removable Carriage Gasket	1	



# S13A-16 Knife Removal Tool - Option





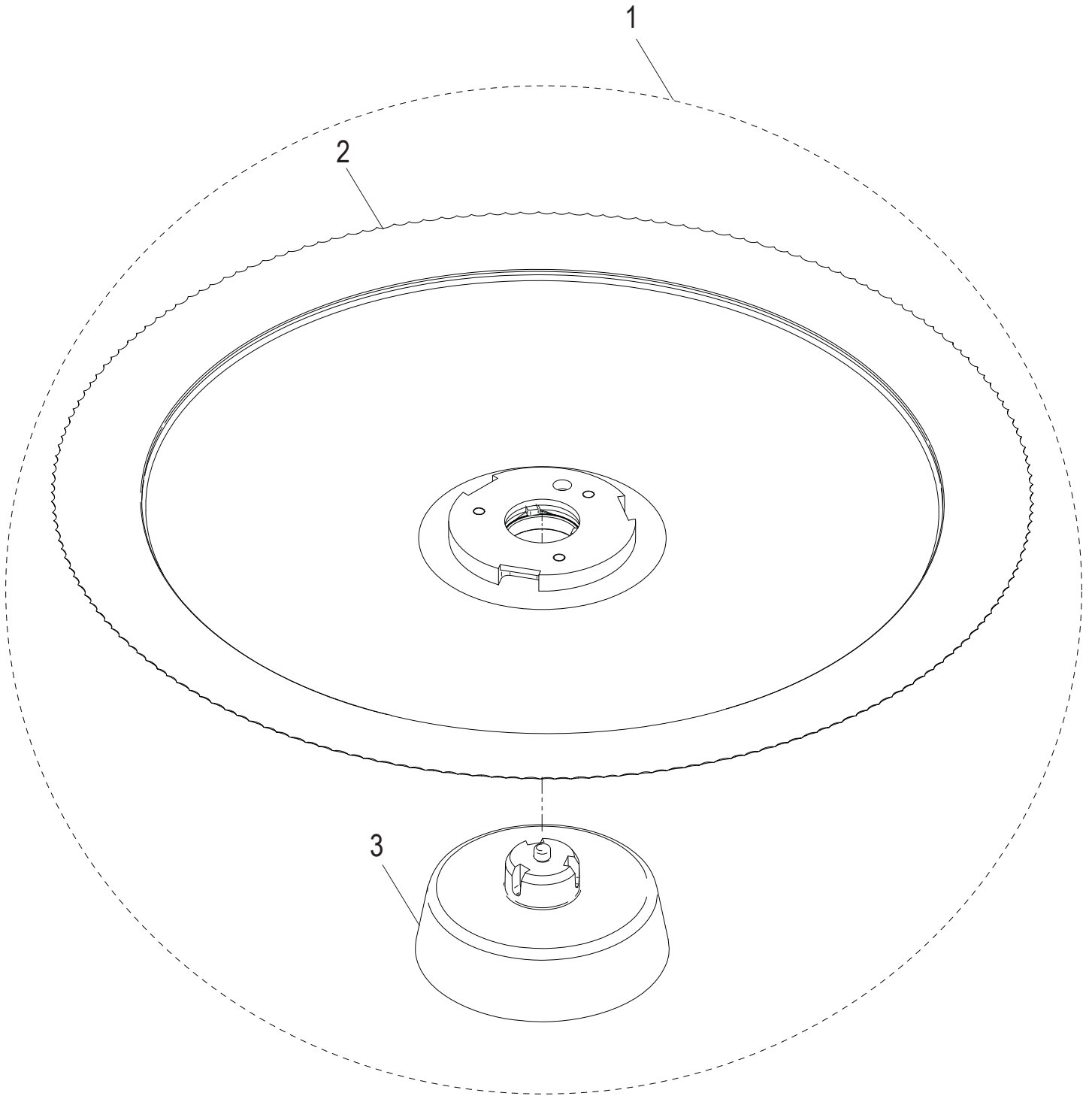
## S13A-16 Knife Removal Tool - Option

---

Item	Part Number	Description	Qty	Serial Number
1	450200	Removable Knife Tool Assembly	1	



# S13A-16 Removable Knife Kit - Option





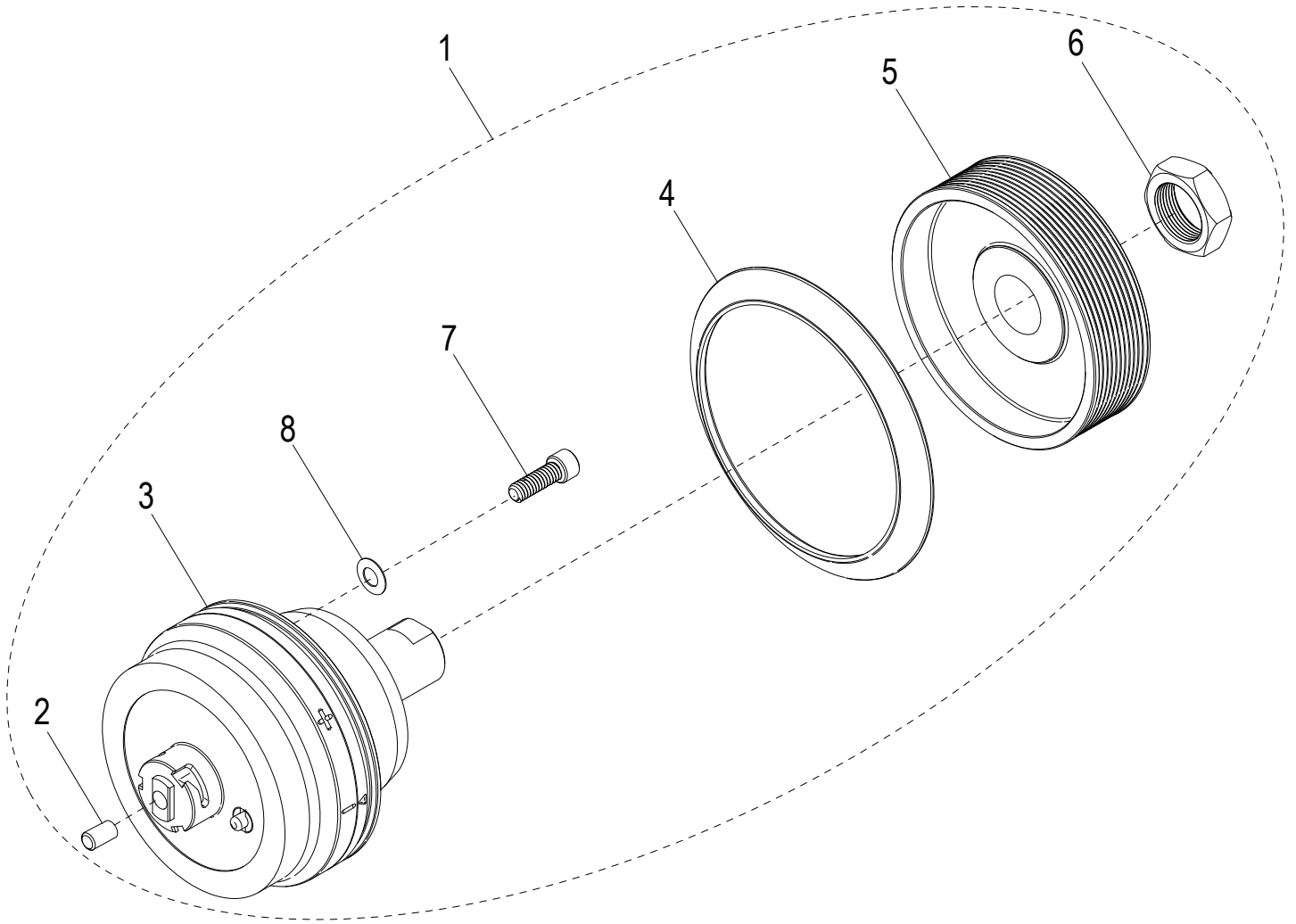
## S13A-16 Removable Knife Kit - Option

---

Item	Part Number	Description	Qty	Serial Number
1	<a href="#">450222-02</a>	Removable Knife Kit	1	
2		Knife, 13" Frozen, Serrated, Removable	1	
3		Post, Service Knife Release	1	



# S13A-16 Removable Knife Drive Kit - Option





## S13A-16 Removable Knife Drive Kit - Option

---

Item	Part Number	Description	Qty	Serial Number
1	450226-02	Removable Knife Drive Kit	1	
2	1193	Plug	1	
3		Shaft, Removable Knife Drive	1	
4	520244	Knife Drive Boot	1	
5	450208	Pulley, Grooved, Knife Drive	1	
6	510033	Nut 7/8-20 Hex (Zinc)	1	
7	810229	Socket Hd. 1/4-20x3/4 Cap Screw, SST	4	
8	810275	Bellville Disc Spring Washer .255 ID x .50 OD	4	



# S13A-16 Wiring Schematic

