

Parts Catalog



G12

Slicing Machine

Model: G12

5/15/2023 Rev H, Serial Number 535495 and Up
IMPORTANT!

TO EXPEDITE SHIPMENT OF PARTS, ALWAYS SPECIFY MODEL, REV,
PART NUMBER, AND SERIAL NUMBER OF UNIT.

GLOBE FOOD EQUIPMENT COMPANY

2215 East River Road
Dayton, Ohio 45439

Parts Department

Toll Free 1-800-745-6238 · Fax (937) 290-0585

E-Mail: info@globefoodequip.com

Website: www.globefoodequip.com

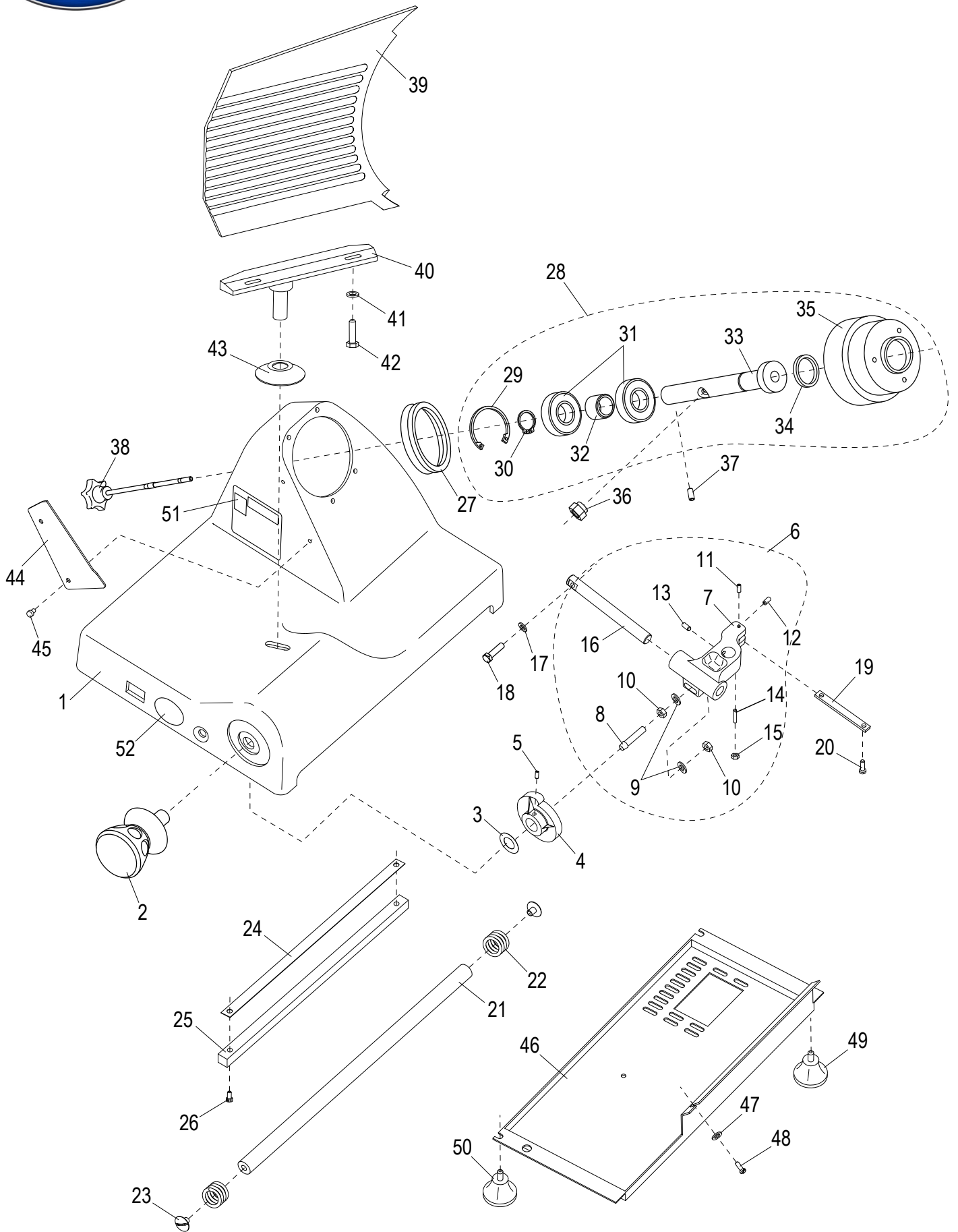
Not for resale

Table of Contents

Description	Page
G12 Base Components	4
G12 Chute Components	6
G12 Knife and Sharpener Components	8
G12 Electrical Components	10
G12 Wiring Diagram - 115, 50_60 Hz, 1PH SN 530476 and Up	12



G12 Base Components



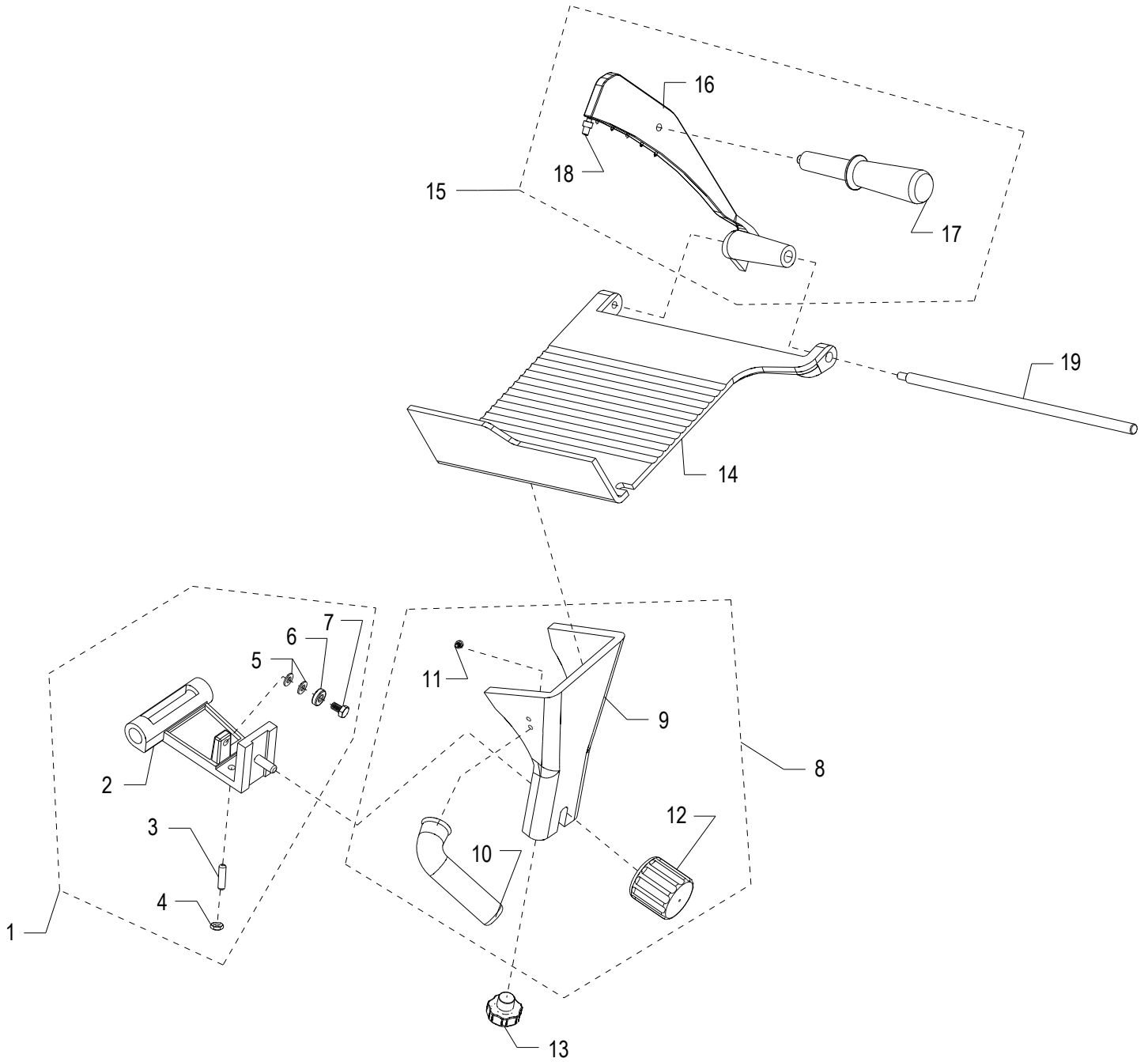


G12 Base Components

Item	Part Number	Description	Qty	Serial Number
1		Slicer Base	1	
2	M00209	Table Adjustment Knob	1	
3	M003	Wave Washer	1	
4	M004	Cam	1	
5	H00181	Set Screw	2	
6	M305	Table Slide Assembly (Incl. items 7-16)	1	
7		Table Slide	1	
8	M03026	Threaded Rod	1	
9	X08101	Washer M8x16mm Flat	2	
10	H00192	Hex Nut M8-1.25,13mm Width,4 mm Height-Zn	2	
11	H00182	Set Screw M5x10 Flat Pt Slotted - Zn	1	
12	H00185	Set Screw	1	
13	H00186	Set Screw M8-1.25x10 Cup Pt. Hex Socket - BO	2	
14	H00188	Set Screw	1	
15	X30186	Hex Nut M5-0.8 OD-8, TH-4mm, Zinc	1	
16	MR36	Table Slide Rod	1	
17	X08101	Washer M8x16mm Flat	2	
18	H00116	Hex Head Screw M6-1.0x20 - Zn	2	
19	M016	Table Slide Plate	1	
20	H00061	Hex Head Screw M5x10, Zinc	2	
21	M059	Round Slide Rod	1	
22	M061	Spring	2	
23	M060	Screw	2	
24	M063	Wear Strip	1	
25	M062	Square Slide Bar	1	
26	H00056	Screw	2	
27	MGI77/5	Knife Seal	1	
28	M319	Knife Hub Assembly (Incl. items 29-35)	1	
29		Retaining Ring, Internal	1	
30	H00195	Retaining Ring, External	1	
31	M020	Bearing (6204 6RS)	2	
32		Spacer, Knife Pulley	1	
33		Shaft, Knife Hub	1	
34		Oil Seal	1	
35		Pulley, Knife Hub	1	
36	MCR61	Knife Hub Nut	1	
37	H00184	Set Screw	1	
38	M00225	Knife Cover Release Knob	1	
39	M00232	Table	1	
40	M00227	Table Support	1	
41	X08101	Washer M8x16mm Flat	2	
42	H00196	Screw	2	
43	M073	Hole Cover	1	
44	M097	Slice Deflector	1	
45	MCC23	Thumb Screw	2	
46	M113	Bottom Cover	1	
47	H00063	Flat Washer, M5, Zinc	1	
48	H00061	Hex Head Screw M5x10, Zinc	1	
49	M115	Foot	2	
50	M00229	Front Foot	2	
51	M91022	Warning Label	1	
52	M91021	Globe Logo	1	



G12 Chute Components



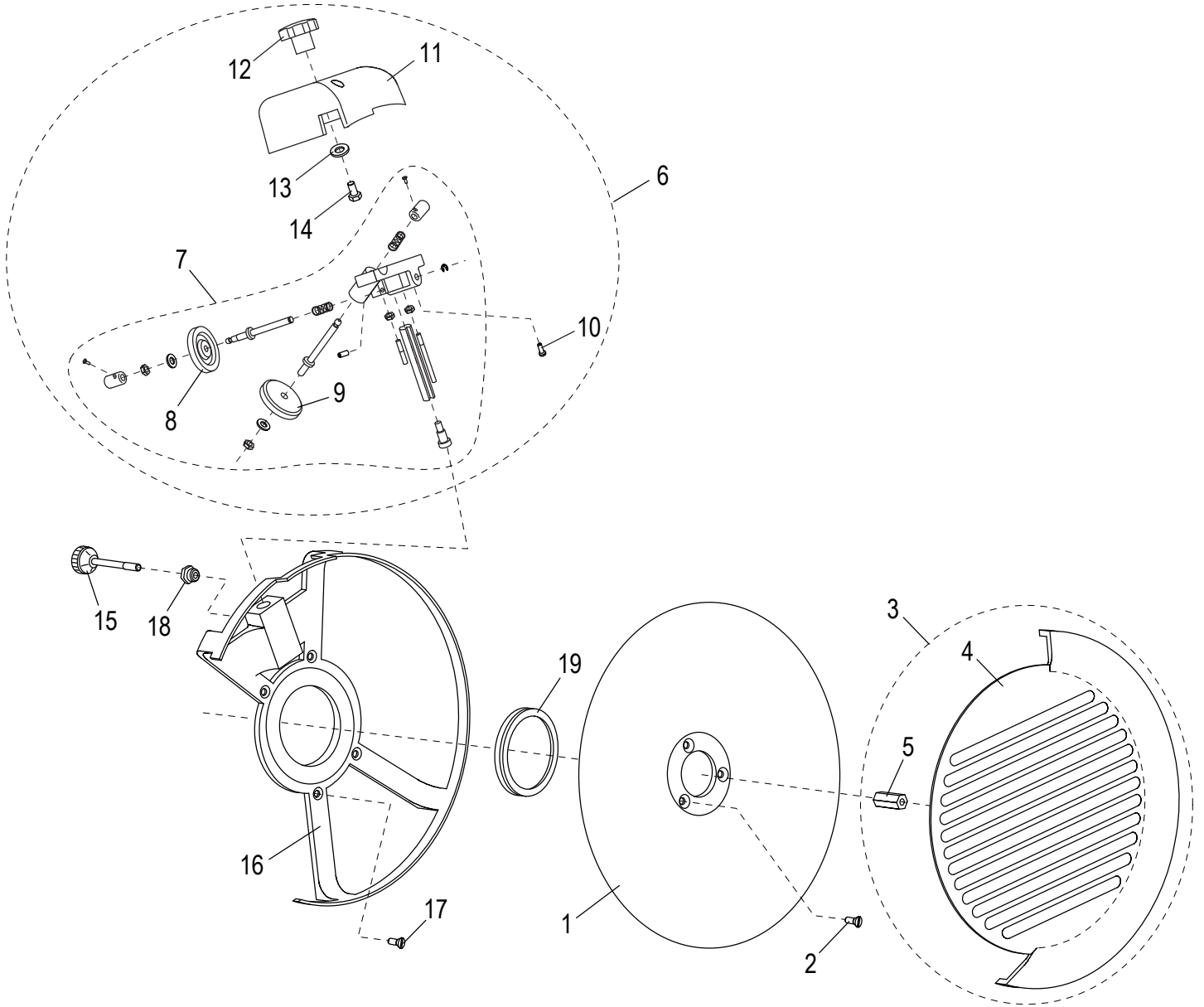


G12 Chute Components

Item	Part Number	Description	Qty	Serial Number
1	M352	Chute Slide Assembly (Incl. items 2-7)	1	
2		Chute Slide	1	
3	M053	Brass Stud	1	
4	H00192	Hex Nut M8-1.25,13mm Width,4 mm Height-Zn	1	
5	X08101	Washer M8x16mm Flat	2	
6	M056	Bearing (608 2RS)	1	
7	H00117	Hex Head Screw M8x20 - Zn	1	
8	M00282	Chute Support Assembly (Incl. items 9-11)	1	
9		Chute Support	1	
10	M067	Chute Support Handle	1	
11	H00156	Ext. Hex Hd M6x1.0x12 mm Screw Zinc 8.8	2	
12	M00268	Chute Support Knob	1	
13	M00254	Chute Release Knob	1	
14	M01068	Chute	1	518220 - 535494
14	M02732	Chute	1	535495 ->
15	M01069	End Weight Assembly (Incl. 16-18)	1	518220 - 535494
15	M02737	End Weight Assembly (Incl. 16-18)	1	535495 ->
16		End Weight	1	
17	M00261	End Weight Handle	1	
18	M01070	Bumper	1	518220 - 535494
18	M02733	Bumper	1	535495 ->
19	M01071	End Weight Rod	1	
20	M500A	Chute Fence Assembly (Not Shown)	1	
21	M00289	Fence Release Knob (Not Shown)	1	
22	741-5B	Bumper (Not Shown)	1	



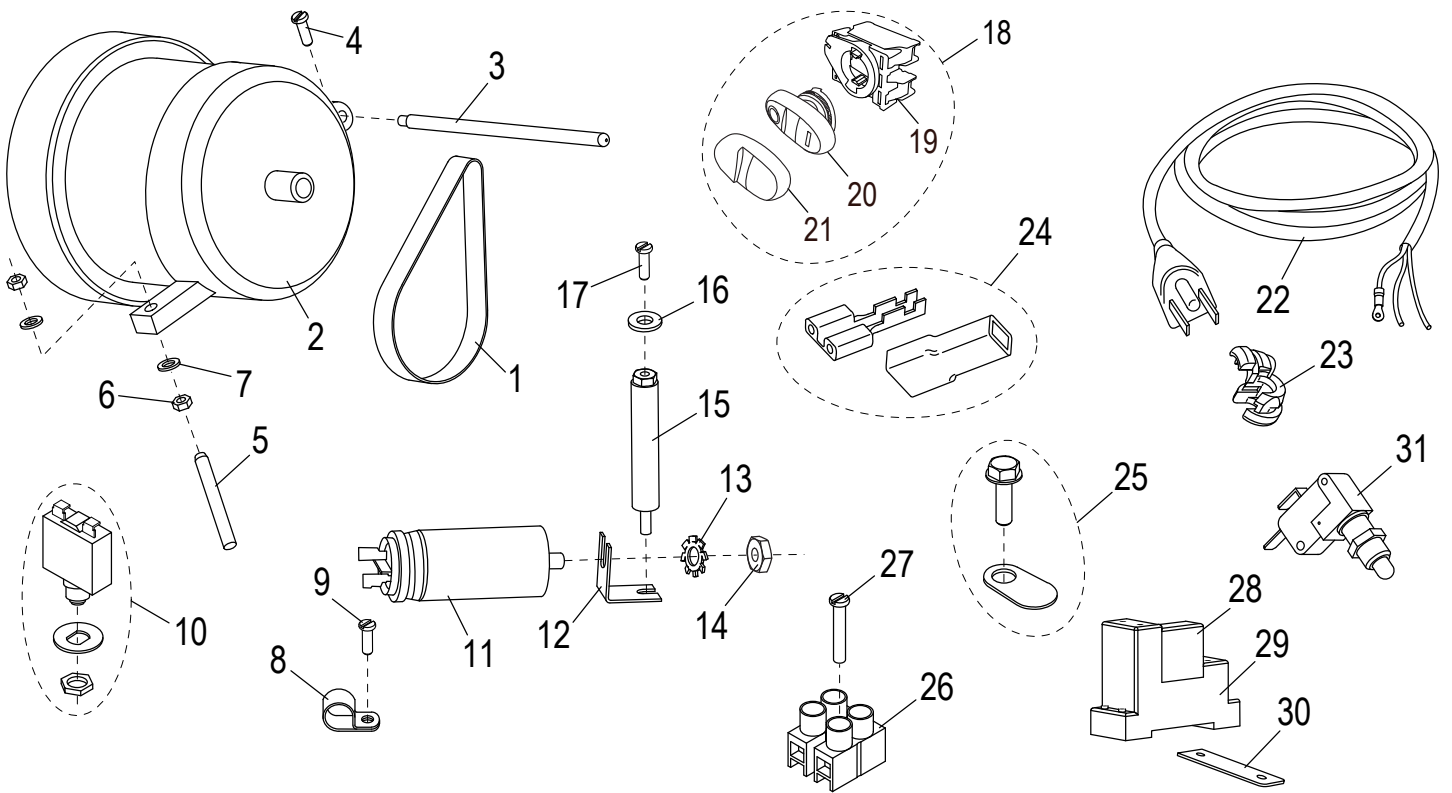
G12 Knife and Sharpener Components





G12 Knife and Sharpener Components

Item	Part Number	Description	Qty	Serial Number
1	M047	Knife	1	
2	H00201	Screw	3	
3	M349	Knife Cover Kit (Incl. items 4-5)	1	
4		Knife Cover	1	
5	M049A	Insert	1	
6	M377	Complete Sharpener Assembly (Incl. items 7-14)	1	
7	MC017	Sharpener Assembly (Incl. items 8-9)	1	
8	M092	Deburring Stone	1	
9	MCC17	Sharpening Stone	1	
10	H00187	Cheese Hd Screw M5-0.8x16 Slotted - Zn	2	
11	M074	Sharpener Cover	1	
12	M075	Sharpener Cover Knob	1	
13	M035	Flat Washer ID 6.5 OD 12 TH 1.5 mm Zinc	1	
14	H00197	Hex Hd Screw M6x15 - Zn	1	
15	M096	Sharpener Release Knob	1	
16	M044	Rim Guard	1	
17	H00435	Screw	4	
18	M045	Insert	1	
19	MGI77/5	Knife Seal	1	





G12 Electrical Components

Item	Part Number	Description	Qty	Serial Number
1	M024	Belt	1	
2	M030	Motor (115V/60HZ/3.5A)	1	
2	M02887	Motor (220V/60HZ)	1	
3	M031	Pin	1	
4	H00189	Cheese Hd Screw M4-0.7x10 Slotted - Zn	1	
5	M033	Threaded Rod	1	
6	M034	Hex Nut M6x1.0 OD 10 mm TH 5 mm Zinc	2	
7	M035	Flat Washer ID 6.5 OD 12 TH 1.5 mm Zinc	2	
8	M03023	Cable Clamp	1	
9	H00061	Hex Head Screw M5x10, Zinc	1	
10	M038	Reset Switch	1	
11	M039	Capacitor	1	
12		Bracket, Capacitor Mounting	1	
13	H00335	Lock Washer M8, ID-8.4, OD-15, TH-0.8mm Zn	1	
14	H00192	Hex Nut M8-1.25,13mm Width,4 mm Height-Zn	1	
15	M00358	Standoff	1	
16	M035	Flat Washer ID 6.5 OD 12 TH 1.5 mm Zinc	1	
17	H00061	Hex Head Screw M5x10, Zinc	1	
18	M02050	Power Switch Assembly	1	530476 ->
19		Contact Assembly	1	530476 ->
20	M02048	On/Off Switch	1	530476 ->
21	M02047	Power Switch Cover	1	530476 ->
22	M110	Power Cord	1	
23	M111	Strain Relief	1	
24	M00233	Terminal & Insulator	15	
25	M00334	Ground Screw	1	
26	MB80/2	Terminal Block w/Screw	1	
27	H00203	Screw	1	
28	MCR75	Relay	1	
29	MCR76	Relay Mount	1	
30	M00360	Mounting Plate	1	
31	M026	Microswitch	1	



G12 Wiring Diagram - 115, 50 60 Hz, 1PH SN 530476 and Up

WIRE COLOR
MAY VARY

