

# Parts Catalog



**G12AE-220-240501**

## Slicing Machine

**Model: G12AE-220-240501**

2/04/2019 Rev -  
IMPORTANT!

TO EXPEDITE SHIPMENT OF PARTS, ALWAYS SPECIFY MODEL, REV,  
PART NUMBER, AND SERIAL NUMBER OF UNIT.

## **GLOBE FOOD EQUIPMENT COMPANY**

2215 East River Road  
Dayton, Ohio 45439

### **Parts Department**

Toll Free 1-800-745-6238 · Fax (937) 290-0585

E-Mail: [info@globefoodequip.com](mailto:info@globefoodequip.com)

Website: [www.globefoodequip.com](http://www.globefoodequip.com)

Not for resale

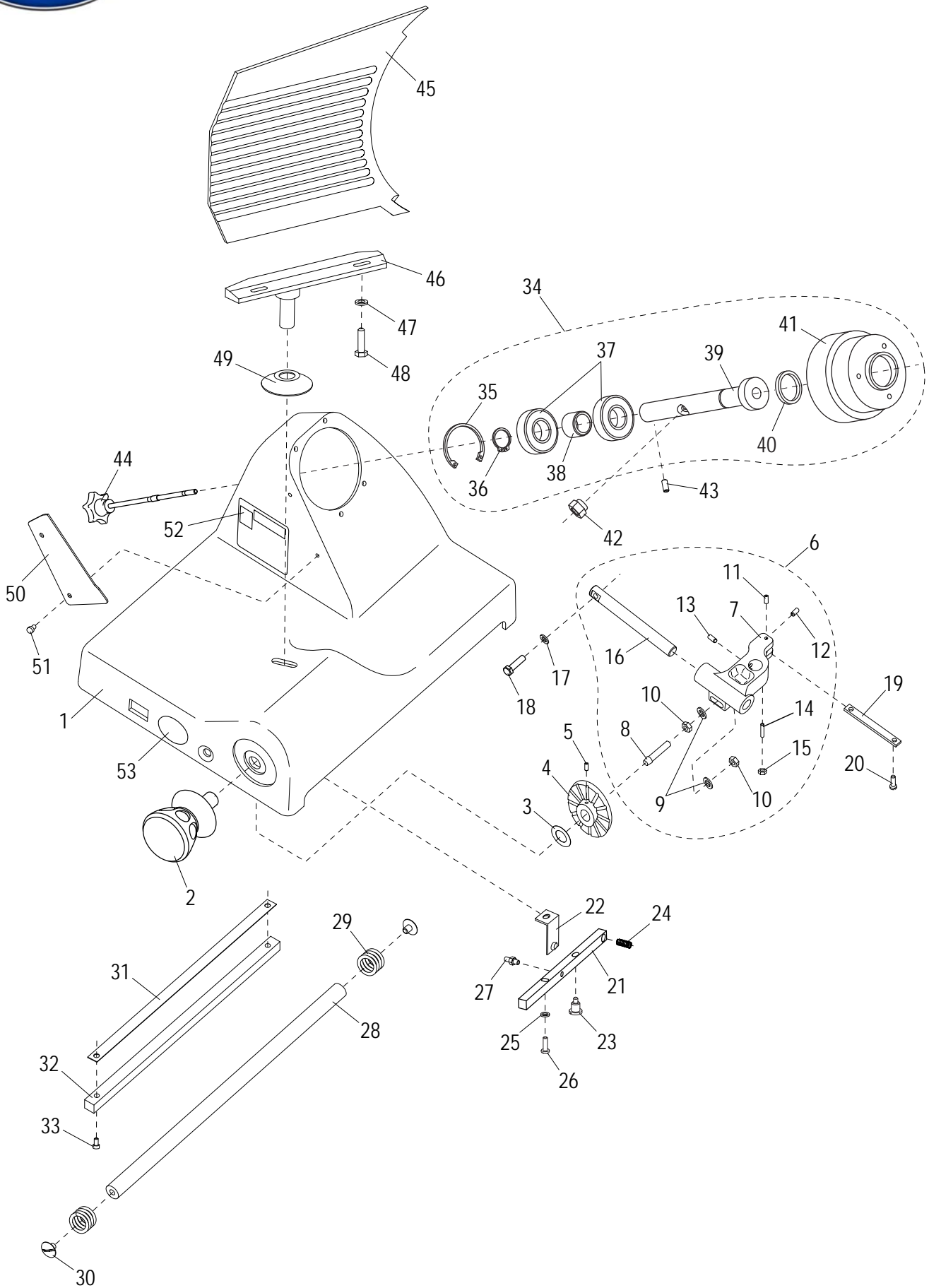


# Table of Contents

Description	Page
G12AE Base Components	4
G12AE Chute Components	6
G12AE Knife and Sharpener Components	8
G12AE Auto Drive Components	10
G12AE Electrical Components	12
G12AE Wiring Diagram - 220, 50 Hz, 1PH	14



# G12AE Base Components



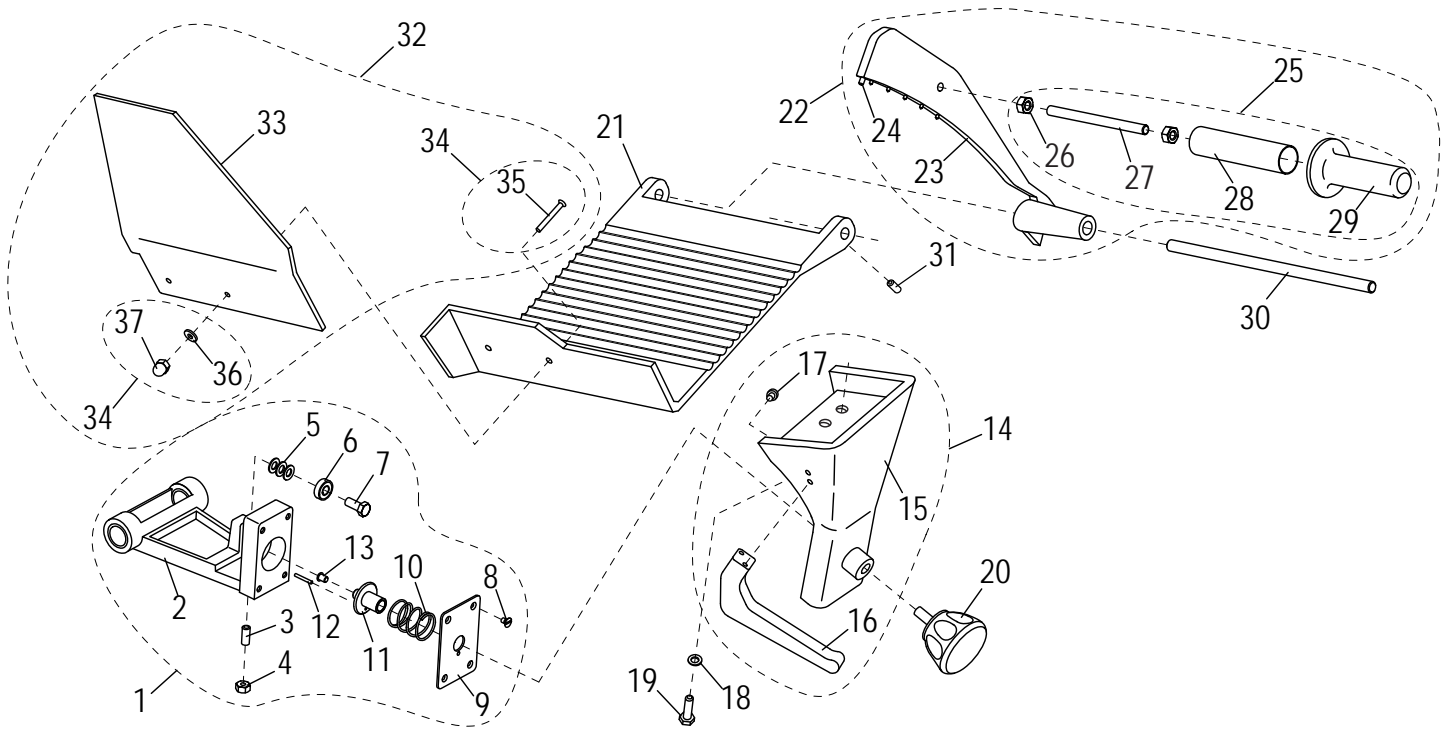


## G12AE Base Components

Item	Part Number	Description	Qty	Serial Number
1		Slicer Base	1	
2	M002	Table Adjustment Knob	1	
3	M003	Wave Washer	1	
4	M00235	Table Adjustment Cam	1	
5	H00181	Set Screw	2	
6	M305	Table Slide Assy (Incl. items 7-16)	1	
7		Table Slide	1	
8	M013	Stud, Cam Actuator	1	
9	H00191	Flat Washer M8, 8.4 IDx16 ODx1.4-1.8mm thick DIN 125 - Zn	2	
10	H00192	Hex Nut M8-1.25,13mm Width,4 mm Height-Zn	2	
11	H00182	Set Screw M5x10 Flat Pt Slotted - Zn	1	
12	H00185	Set Screw, Table Slide End	1	
13	H00186	Set Screw M8-1.25x10 Cup Pt. Hex Socket - BO	2	
14	H00188	Set Screw, Table Slide Bottom	1	
15	H00028	Hex Nut M5 - Zn	1	
16	MR36	Table Slide Rod	1	
17	H00191	Flat Washer M8, 8.4 IDx16 ODx1.4-1.8mm thick DIN 125 - Zn	2	
18	H00116	Hex Head Screw M6-1.0x20 - Zn	2	
19	M016	Table Slide Plate	1	
20	H00061	Hex Head Screw M5x10, Zinc	2	
21	M00295	Release Lever	1	
22	M00296	Release Lever Bracket	1	
23	M02473	Release Lever Screw	1	
24	M00298	Release Lever Spring	1	
25	H00063	Flat Washer, M5, Zinc	1	
26	H00319	Mounting Bracket Screw	1	
27	M00292	Release Lever Stud	1	
28	M059	Carriage Slide Rod	1	
29	M061	Carriage Spring	2	
30	M060	Slide Rod Screw	2	
31	M063	Wear Strip, Slide Bar	1	
32	M062	Slide Bar, Square	1	
33	H00056	Slide Bar Screw	2	
34	M319	Knife Hub Assembly (Incl. items 35-41)	1	
35		Retaining Ring, Internal	1	
36		Retaining Ring, External	1	
37		Bearing	2	
38		Spacer, Knife Pulley	1	
39		Shaft, Knife Hub	1	
40		Oil Seal, Hub	1	
41		Pulley, Knife Hub	1	
42	MCR61	Microswitch Mounting Bolt	1	
43	H00184	Knife Shaft Set Screw	1	
44	M00225	Knife Cover Release Knob	1	
45	M00226	Table	1	
46	M069	Table Support	1	
47	H00191	Flat Washer M8, 8.4 IDx16 ODx1.4-1.8mm thick DIN 125 - Zn	2	
48	H00196	Table Support Screw	2	
49	M073	Hole Cover, Base	1	
50	M097	Knife Wiper	1	
51	MCC23	Thumb Screw	2	
52	M91022	Label, Warning	1	
53	M91021	Label, Globe Logo	1	



# G12AE Chute Components



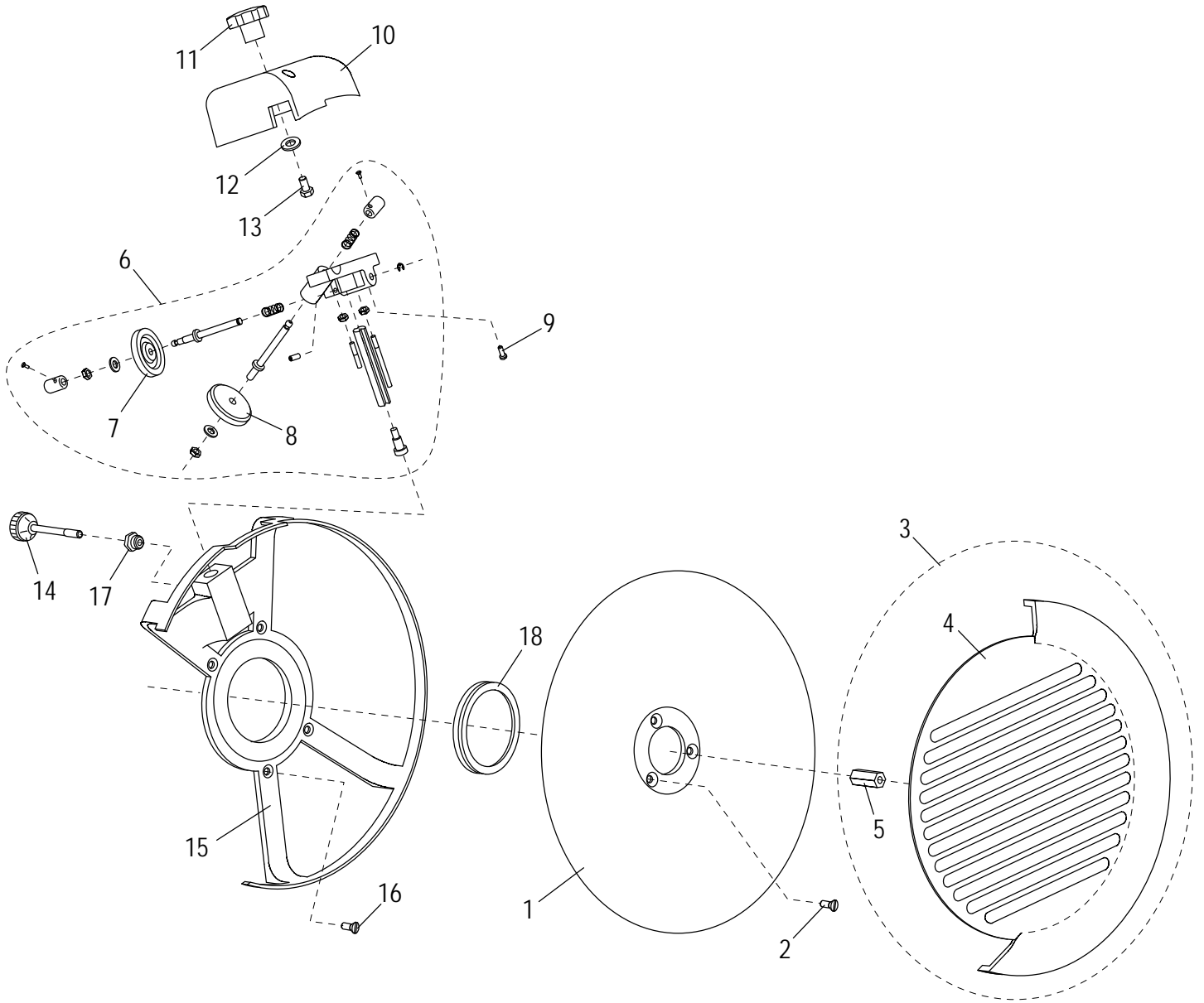


## G12AE Chute Components

Item	Part Number	Description	Qty	Serial Number
1	M00172	Chute Slide Assy	1	
2		Chute Slide	1	
3	M053	Brass Stud	1	
4	H00192	Hex Nut M8-1.25,13mm Width,4 mm Height-Zn	1	
5	H00191	Flat Washer M8, 8.4 IDx16 ODx1.4-1.8mm thick DIN 125 - Zn	3	
6	M056	Bearing	1	
7	M00306	Slide Bearing Screw	1	
8	H00309	Release Plate Screw	4	
9	M00175	Release Plate	1	
10		Release Spring	1	
11	M00173	Internal Release	1	
12	M00307	Release Pin	1	
13	M00308	Release Mechanism Cap	1	
14	M00176	Chute Support Assembly	1	
15		Chute Support	1	
16	M067	Chute Support Handle	1	
17	H00156	Screw M6-1.0x12mm, Chute Support Handle	2	
18	H00191	Flat Washer M8, 8.4 IDx16 ODx1.4-1.8mm thick DIN 125 - Zn	2	
19	H00117	Hex Head Screw M8x20 - Zn	2	
20	M00312	Chute Support Knob	1	
21	M00177	Chute	1	
22	M00179	End Weight Assembly	1	
23		End Weight	1	
24	MC39	Bumper, End Weight	1	
25	M00342	End Weight Handle Assembly	1	
26	H00341	End Weight Handle Nut	2	
27	M00339	End Weight Handle Stud	1	
28		End Weight Spacer	1	
29		End Weight Handle	1	
30	M00178	End Weight Rod	1	
31	H00199	End Weight Rod Set Screw	1	
32	M00169	Hand Guard Kit	1	
33		Hand Guard	1	
34	M00651	Hand Guard Hardware Kit	1	
35		Hand Guard Mounting Screw	2	
36		Hand Guard Washer	2	
37		Hand Guard Nut	2	



# G12AE Knife and Sharpener Components





## G12AE Knife and Sharpener Components

Item	Part Number	Description	Qty	Serial Number
1	M047	Knife	1	
2	H00201	Screw, Knife Mounting	3	
3	M349	Knife Cover	1	
4		Knife Cover	1	
5	M049A	Knife Cover Insert	1	
6	MC017	Knife Sharpener Assembly	1	
7	M092	Deburring Stone	1	
8	MCC17	Sharpening Stone	1	
9	H00187	Cheese Hd Screw M5-0.8x16 Slotted - Zn	2	
10	M074	Sharpener Cover	1	
11	M075	Sharpener Cover Knob	1	
12	M035	Washer, Flat M6, ID-6MM, OD-12MM, THICK-1.5MM	1	
13	H00197	Hex Hd Screw M6x15 - Zn	1	
14	M096	Release Knob, Sharpener	1	
15	M044	Knife Rim Guard	1	
16	H00435	Screw, Rim Guard	4	
17	M045	Insert, Knife Rim Guard	1	
18	MGI77/5	V Ring, Knife Seal VA 80	1	



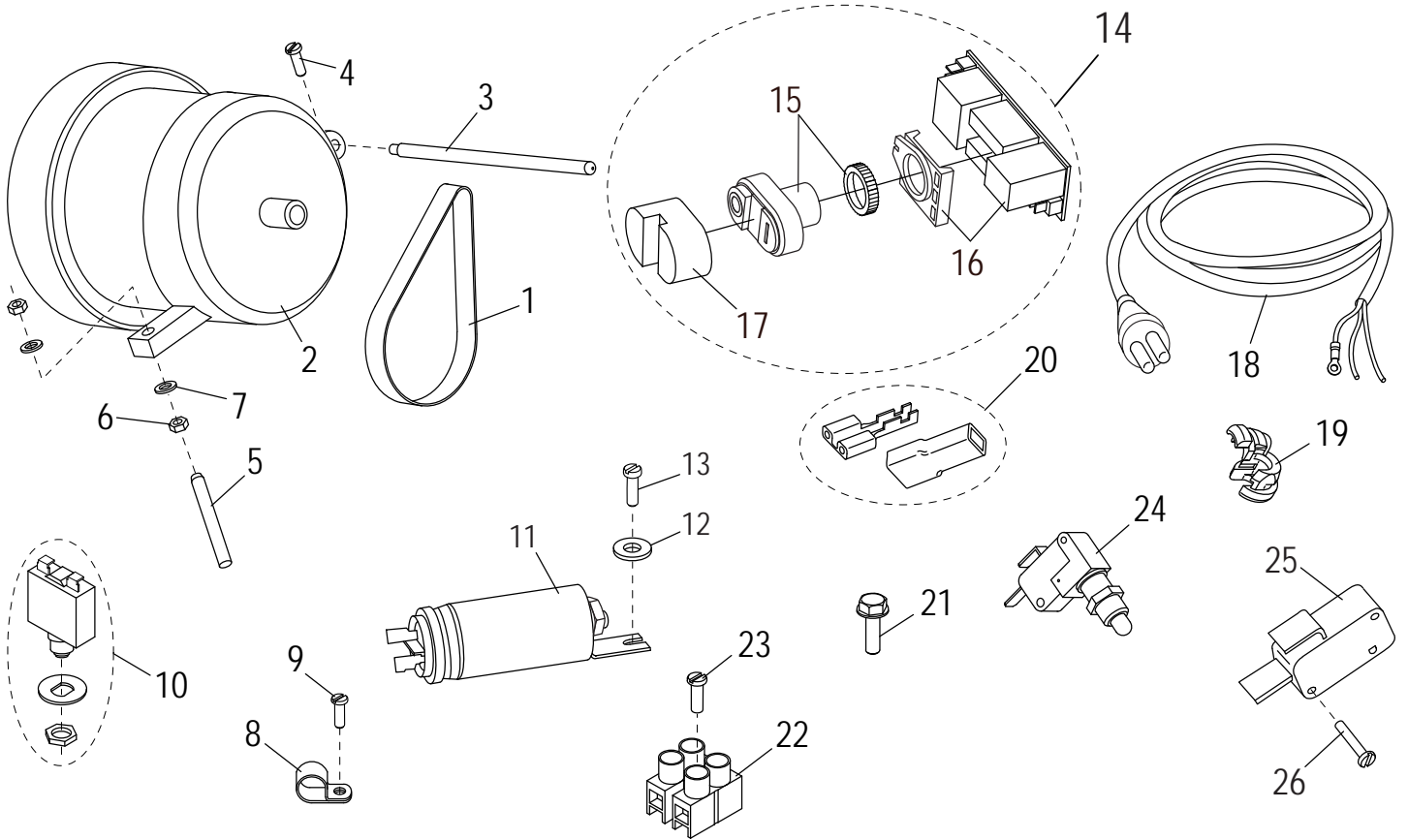


## G12AE Auto Drive Components

Item	Part Number	Description	Qty	Serial Number
1	M02482	Chute Motor	1	
2	M120-K	Motor Key (Not Shown)	1	
3	M121	Reducing Gear	1	
4	M129	Auto Drive Shaft (Incl. items 5-8)	1	
5	H00323	Machine Key	2	
6	H00324	Machine Key	1	
7		Spacer	1	
8	H00317	Retaining Ring, External	1	
9	M130	Auto Drive Coupling (Incl. items 10-11)	1	
10	M137	Sleeve Bearing, Long	1	
11	H00043	Hex Head Screw M6x25 - Zn	1	
12	M131	Connecting Rod A	1	
13	M133	Connecting Rod C	1	
14	M137	Sleeve Bearing, Long	1	
15	MCRS8/2	Sleeve Bearing, Short	1	
16	M132	Connecting Rod B	1	
17	M137	Sleeve Bearing, Long	2	
18	M144	Pivot	1	
19	H00317	Retaining Ring, External	4	
20	M127	Chute Slide Rod	1	
21	M147	Stop Ring	1	
22	M01076	Auto Engage Lever Hub Assembly (Incl. items 23-25)	1	
23		Auto Engage Lever Hub	1	
24		Auto Engage Lever	1	
25		Set M3 x .5 x 20mm Screw	1	
26	M02618	Bushing & Nut Kit	1	
27		Bushing, Chute Slide (Nylon)	1	
28		Chute Slide Nut (Nylon)	1	
29	M124	Actuator Slide Ring	1	
30	M122	Chute Slide Tube	1	
31	M126	Chute Slide Stud	1	
32	H00318	Jam Nut	1	
33	M136	Cam	1	
34	MB32	Wavy Washer	1	
35	M135	Engagement Spring Mounting Bracket	1	
36	H00063	Flat Washer, M5, Zinc	2	
37	H00319	Mounting Bracket Screw	2	
38	M134	Engagement Spring	1	
39	H00063	Flat Washer, M5, Zinc	2	
40	H00011	Split Lock Washer, DIN 7980 M5 - BO	2	
41	H00061	Hex Head Screw M5x10, Zinc	2	
42	H00305	Flat Hd Screw M5x15 Slotted - Nickel	2	
43	M143	Chute Slide Coupling	1	
44	M118BA	Apron, Chute Drive	1	
45	H00316	Apron Mounting Screw	4	
46	M00325	Bottom Cover	1	
47	M115	Back Foot	2	
48	M00229	Front Foot	2	



# G12AE Electrical Components





## G12AE Electrical Components

Item	Part Number	Description	Qty	Serial Number
1	M024	Drive Belt	1	
2	M02479	Knife Motor, 220V	1	
3	M031	Post, Motor Pivot	1	
4	H00189	Cheese Hd Screw M4-0.7x10 Slotted - Zn	1	
5	M033	Set Screw	1	
6	M034	Hex Nut M6-1.0, OD-10mm, HT-5mm, Class 4, Zn	2	
7	M035	Washer, Flat M6, ID-6MM, OD-12MM, THICK-1.5MM	2	
8	M037	Cable Clamp	1	
9	H00061	Hex Head Screw M5x10, Zinc	1	
10	M038	Motor Reset Switch	1	
11	M02481	Capacitor, 8 uf	2	
12	H00063	Flat Washer, M5, Zinc	2	
13	H00061	Hex Head Screw M5x10, Zinc	2	
14	M02664	Power Switch Assembly (Incl. items 15-17)	1	
15	M00350	Power Switch with Nut	1	
16	M00351	Power Switch Electrical Card	1	
17	M00349	Power Switch Cover	1	
18	M02478	Power Cord & Plug	1	
19	M111	Strain Relief	1	
20	M00233	Female Terminal/Insulator Set	20	
21	M00334	Ground Screw	1	
22	MB80/2	Terminal Block	1	
23	H00203	Terminal Block Mounting Screw	1	
24	M026	Hub Assembly Microswitch	1	
25	M139	Chute Drive Microswitch	1	
26	H00204	Microswitch Mounting Screw	2	



# G12AE Wiring Diagram - 115, 50\_60 Hz, 1PH

