

Parts Catalog



G10

Slicing Machine

Model: G10

5/15/23 Rev. H, Serial Number 403490 and Up
IMPORTANT!

TO EXPEDITE SHIPMENT OF PARTS, ALWAYS SPECIFY MODEL, REV,
PART NUMBER, AND SERIAL NUMBER OF UNIT.

GLOBE FOOD EQUIPMENT COMPANY

2215 East River Road
Dayton, Ohio 45439

Parts Department

Toll Free 1-800-745-6238 · Fax (937) 290-0585

E-Mail: info@globefoodequip.com

Website: www.globefoodequip.com

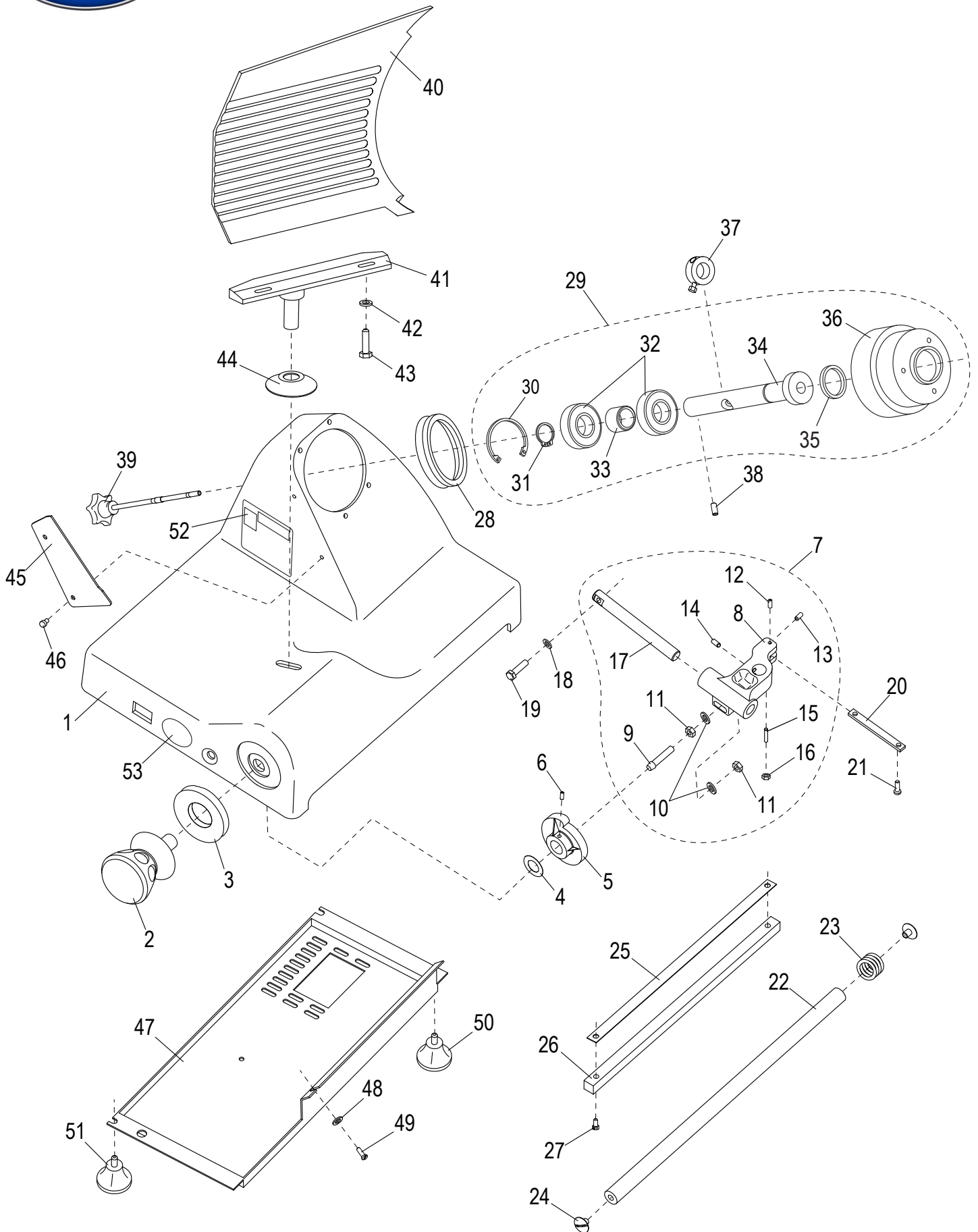
Not for resale

Table of Contents

Description	Page
G10 Base Components	4
G10 Chute Components	6
G10 Knife and Sharpener Components	8
G10 Electrical Components	10
G10 Wiring Diagram - 115, 50_60 Hz, 1PH SN 403490 and Up	12



G10 Base Components



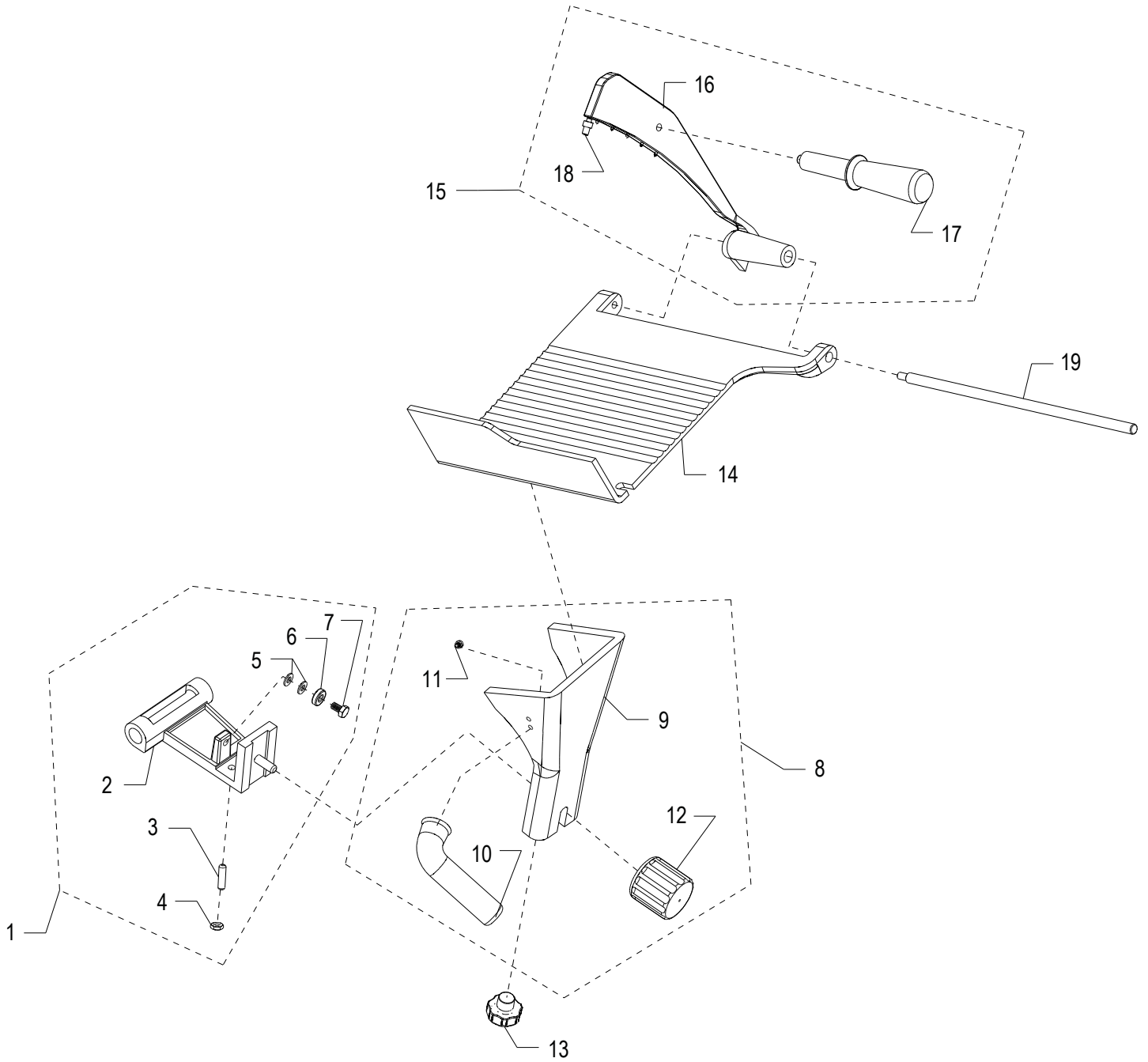


G10 Base Components

Item	Part Number	Description	Qty	Serial Number
1		Slicer Base	1	
2	M00208	Table Adjustment Knob	1	
3	M00211	Ferrule	1	
4	M003	Wave Washer	1	
5	M004	Cam	1	
6	H00181	Set Screw	2	
7	M00212	Table Slide Assembly (Incl. items 8-17)	1	
8		Table Slide	1	
9	MCA34	Threaded Rod	1	
10	M035	Flat Washer ID 6.5 OD 12 TH 1.5 mm Zinc	2	
11	M034	Hex Nut M6x1.0 OD 10 mm TH 5 mm Zinc	2	
12	H00182	Set Screw M5x10 Flat Pt Slotted - Zn	1	
13	H00189	Cheese Hd Screw M4-0.7x10 Slotted - Zn	1	
14	H00186	Set Screw M8-1.25x10 Cup Pt. Hex Socket - BO	2	
15	H00187	Cheese Hd Screw M5-0.8x16 Slotted - Zn	1	
16	X30186	Hex Nut M5-0.8 OD-8, TH-4mm, Zinc	1	
17	M014	Table Slide Rod	1	
18	X08101	Washer M8x16mm Flat	2	
19	H00116	Hex Head Screw M6-1.0x20 - Zn	2	
20	M016	Table Slide Plate	1	
21	H00061	Hex Head Screw M5x10, Zinc	2	
22	MCA26	Round Slide Rod	1	
23	MCA27	Spring	2	
24	MCA25	Screw	2	
25	MCA31/1	Wear Strip	1	
26	MCA31	Square Slide Bar	1	
27	H00187	Cheese Hd Screw M5-0.8x16 Slotted - Zn	2	
28	MGI77/5	Knife Seal	1	
29	M00280	Knife Hub Assembly (Incl. items 30-36)	1	
30	H00053	Retaining Ring, Internal	1	
31	H00194	Retaining Ring, External	1	
32	MCA12/3	Bearing (6202 RS)	2	
33	M00237	Spacer	1	
34		Shaft, Knife Hub - Switch Collar	1	
35		Oil Seal	1	
36		Pulley, Knife Hub	1	
37		Microswitch Collar	1	
38	H00183	Set Screw M5x10 Cup Pt. Hex Socket - BO	1	
39	M00225	Knife Cover Release Knob	1	
40	M00221	Table	1	
41	M00217	Table Support	1	
42	M035	Flat Washer ID 6.5 OD 12 TH 1.5 mm Zinc	2	
43	H00116	Hex Head Screw M6-1.0x20 - Zn	2	
44	M00218	Hole Cover	1	
45	M097	Slice Deflector	1	
46	MCC23	Thumb Screw	2	
47	M00240	Bottom Cover	1	
48	H00063	Flat Washer, M5, Zinc	1	
49	H00061	Hex Head Screw M5x10, Zinc	1	
50	MCA24/1	Back Foot	2	
51	M00220	Front Foot	2	
52	M91022	Warning Label	1	
53	M91021	Globe Logo	1	



G10 Chute Components



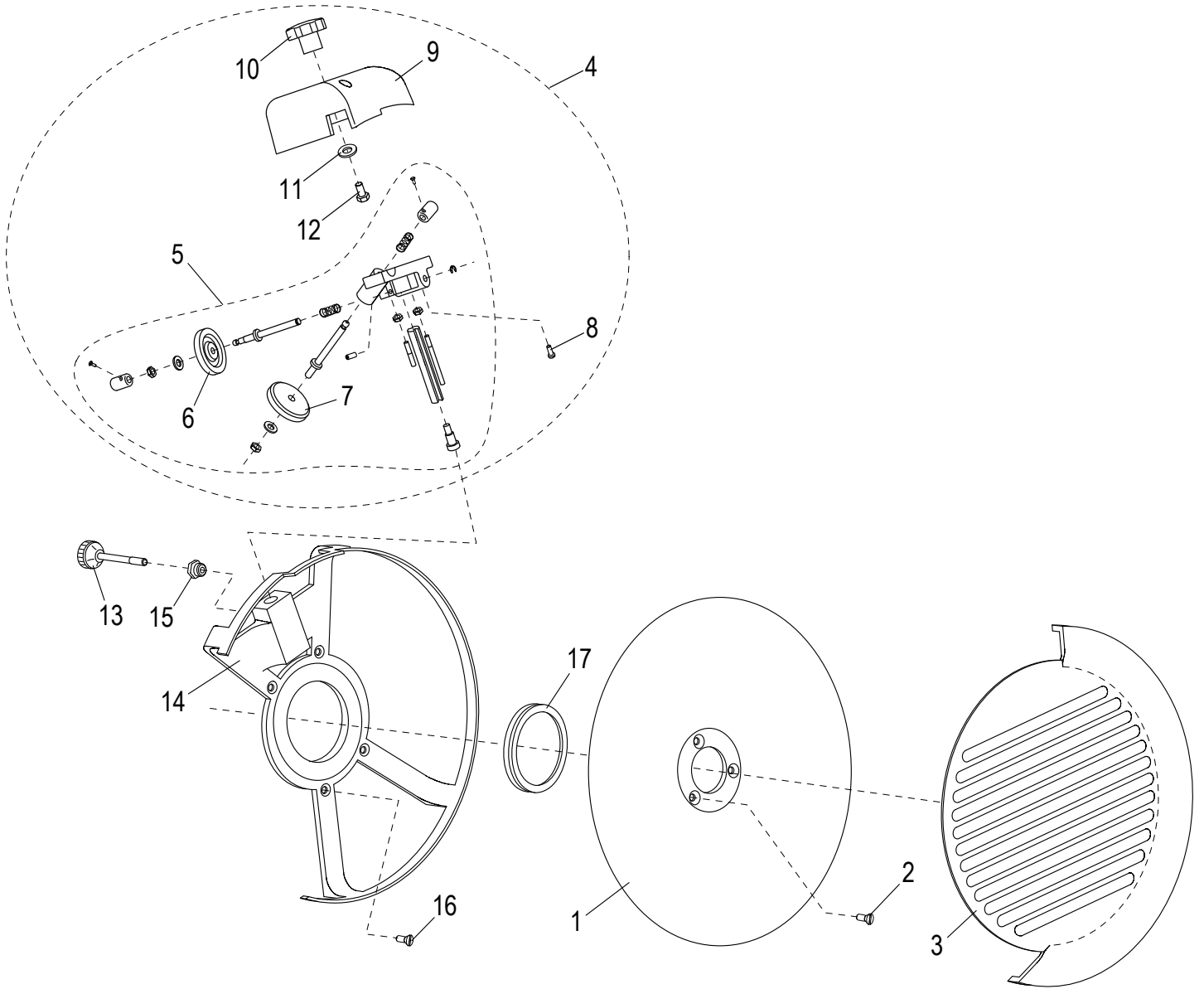


G10 Chute Components

Item	Part Number	Description	Qty	Serial Number
1	MC006	Chute Slide Assembly (Incl. items 2-7)	1	
2		Chute Slide	1	
3	M053	Brass Stud	1	
4	H00192	Hex Nut M8-1.25,13mm Width,4 mm Height-Zn	1	
5	M035	Flat Washer ID 6.5 OD 12 TH 1.5 mm Zinc	2	
6	MCA29	Bearing (626 2RS)	1	
7	H00043	Hex Head Screw M6 x 25 mm- Zn	1	
8	M00273	Chute Support Assembly (Incl. items 9-11)	1	
9		Chute Support	1	
10	M067	Chute Support Handle	1	
11	H00156	Ext. Hex Hd M6x1.0x12 mm Screw Zinc 8.8	2	
12	M00253	Chute Support Knob	1	
13	M00284	Chute Release Knob	1	
14	M01096	Chute	1	402269 - 403489
14	M02729	Chute	1	403490 ->
15	M01098	End Weight Assembly (Incl. items 16-18)	1	402269 - 403489
15	M02736	End Weight Assembly (Incl. items 16-18)	1	403490 ->
16		End Weight	1	
17	M00257	End Weight Handle	1	
18	M01070	Bumper	1	402268 - 403489
18	M02731	Bumper	1	403490 ->
19	M01095	End Weight Rod	1	



G10 Knife and Sharpener Components



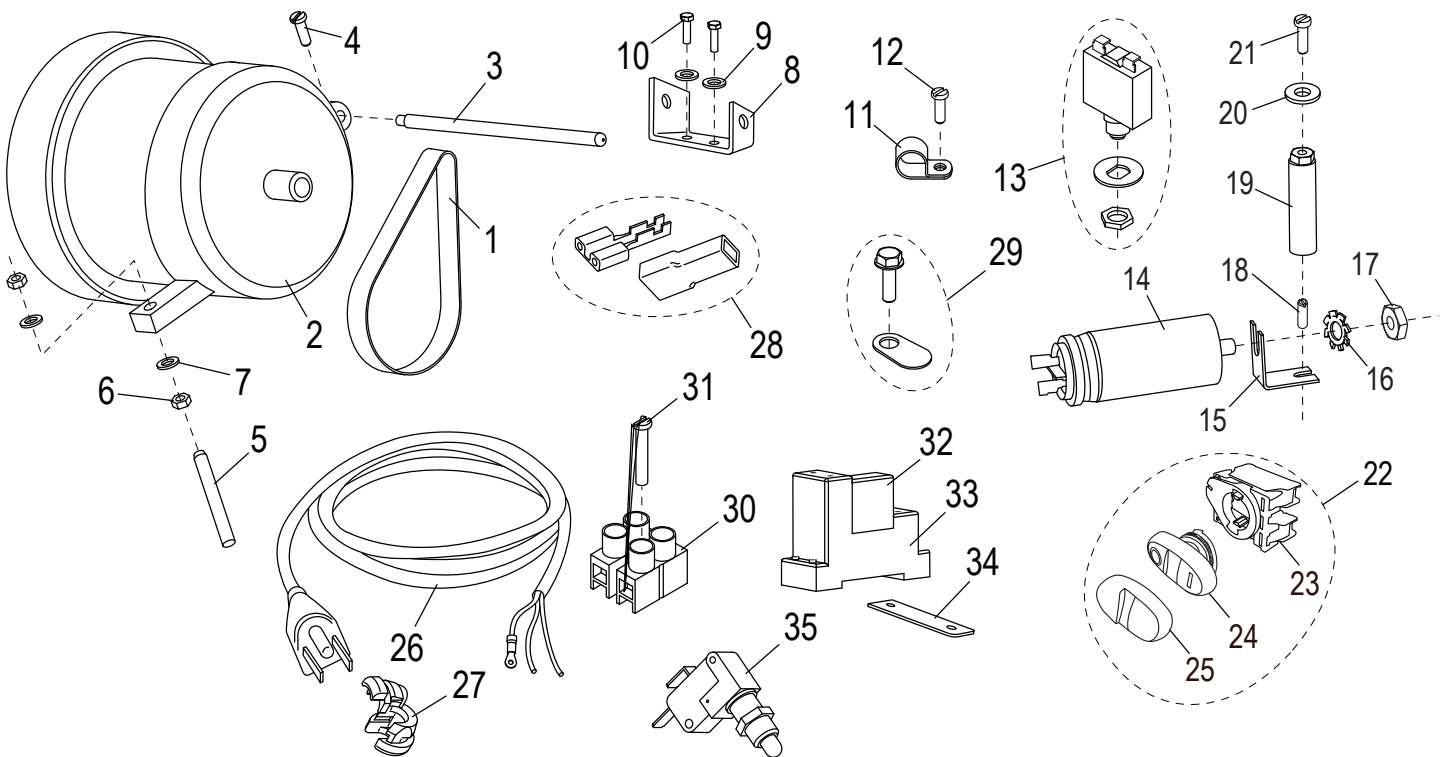


G10 Knife and Sharpener Components

Item	Part Number	Description	Qty	Serial Number
1	MCB13	Knife	1	
2	56-A	Flat HD Screw- Slotted, ZINC-8.8	3	
3	M00327	Knife Cover	1	
4	M377	Complete Sharpener Assembly (Incl. items 5-12)	1	
5	MC017	Sharpener Assembly	1	
6	M092	Deburring Stone (Incl. items 6-7)	1	
7	MCC17	Sharpening Stone	1	
8	H00187	Cheese Hd Screw M5-0.8x16 Slotted - Zn	2	
9	M074	Sharpener Cover	1	
10	M075	Sharpener Cover Knob	1	
11	M035	Flat Washer ID 6.5 OD 12 TH 1.5 mm Zinc	1	
12	H00197	Hex Hd Screw M6x15 - Zn	1	
13	M096	Sharpener Release Knob	1	
14	MCRB14/1	Rim Guard	1	
15	M045	Insert	1	
16	H00435	Screw	4	
17	MGI77/5	Knife Seal	1	



G10 Electrical Components





G10 Electrical Components

Item	Part Number	Description	Qty	Serial Number
1	MCB51	Belt	1	
2	MCL43/2	Motor (115V/60HZ/2.5A)	1	
3	M031	Pin	1	
4	H00189	Cheese Hd Screw M4-0.7x10 Slotted - Zn	1	
5	M033	Threaded Rod	1	
6	M034	Hex Nut M6x1.0 OD 10 mm TH 5 mm Zinc	2	
7	M035	Flat Washer ID 6.5 OD 12 TH 1.5 mm Zinc	2	
8	M00355	Mounting Bracket	1	
9	H00063	Flat Washer, M5, Zinc	1	
10	H00354	Motor Mounting Screw	2	
11	M037	Cable Clamp	1	
12	H00061	Hex Head Screw M5x10, Zinc	1	
13	M038	Reset Switch	1	
14	M039	Capacitor	1	
15		Bracket, Capacitor Mounting	1	
16	H00335	Lock Washer M8, ID-8.4, OD-15, TH-0.8mm Zn	1	
17	H00192	Hex Nut M8-1.25,13mm Width,4 mm Height-Zn	1	
18	H00188	Set Screw	1	
19	M00359	Standoff	1	
20	M035	Flat Washer ID 6.5 OD 12 TH 1.5 mm Zinc	1	
21	H00061	Hex Head Screw M5x10, Zinc	1	
22	M02050	Power Switch Assembly	1	403490 ->
23		Contact Assembly	1	403490 ->
24	M02048	Switch	1	403490 ->
25	M02047	Power Switch Cover	1	403490 ->
26	M110	Power Cord	1	
27	M111	Strain Relief	1	
28	M00233	Terminal & Insulator	15	
29	M00334	Ground Screw	1	
30	MB80/2	Terminal Block w/Screw	1	
31	M029	Screw	1	
32	MCR75	Relay	1	
33	MCR76	Relay Mount	1	
34	M00360	Mounting Plate	1	
35	M026	Microswitch	1	



G10 Wiring Diagram - 115, 50 60 Hz, 1PH SN 403490 and Up

WIRE COLOR
MAY VARY

