

Parts Catalog



FS12

Flywheel Slicer

Model: FS12

05/22/2023 Rev B

IMPORTANT!

TO EXPEDITE SHIPMENT OF PARTS, ALWAYS SPECIFY MODEL, REV,
PART NUMBER, AND SERIAL NUMBER OF UNIT.

GLOBE FOOD EQUIPMENT COMPANY

2215 East River Road
Dayton, Ohio 45439

Parts Department

Toll Free 1-800-745-6238 · Fax (937) 290-0585

E-Mail: info@globefoodequip.com

Website: www.globefoodequip.com

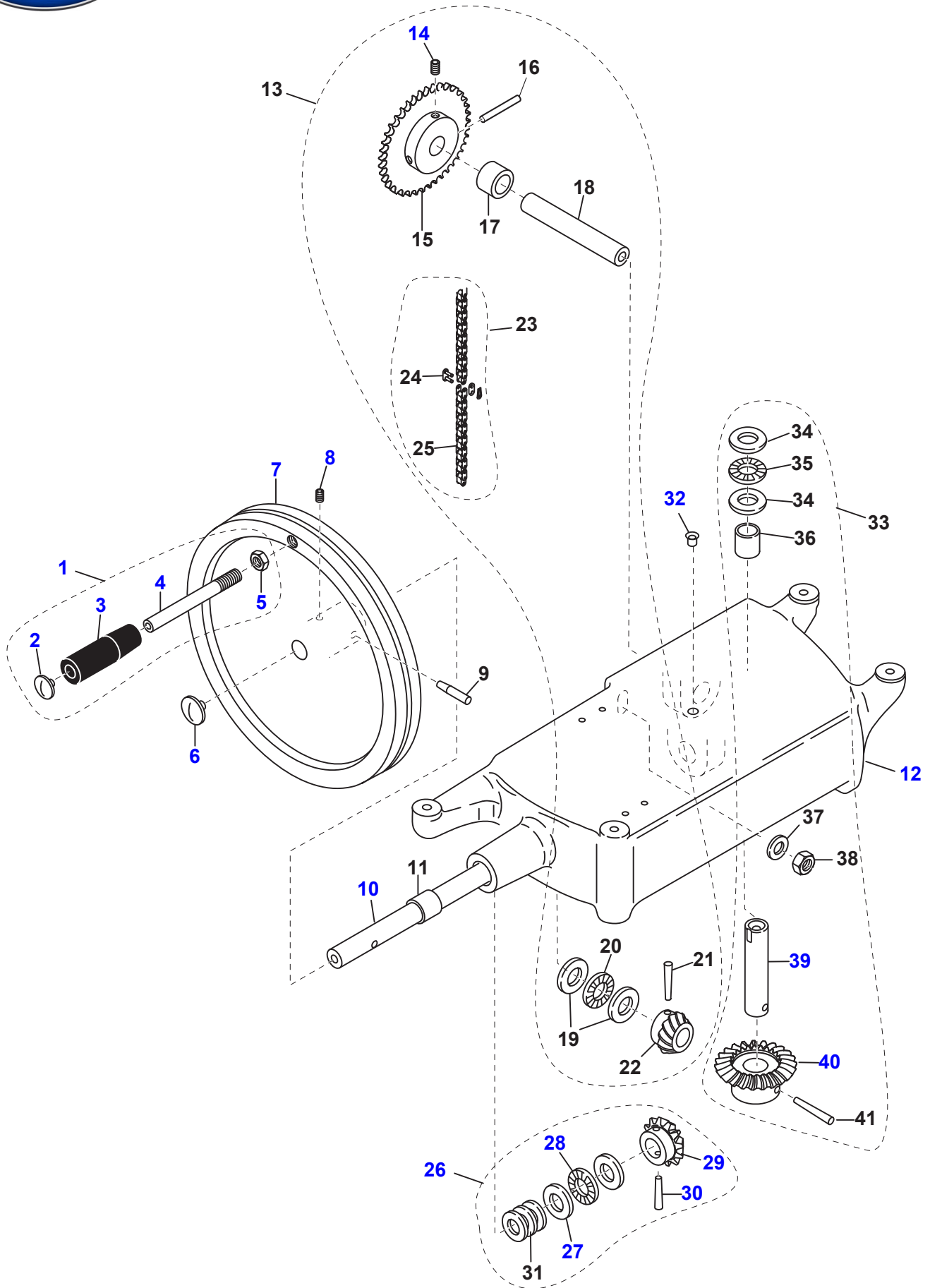
Not for resale

Table of Contents

Description	Page
FS12 Machine Base Components	4
FS12 Slide Rod Components	6
FS12 Knife Blade Components	8
FS12 Carriage Assembly Components	10
FS12 Carriage Slide Components	12
FS12 Product Holder Components	14
FS12 Product Tray Components	16
FS12 Sharpener Assembly Components	18



FS12 Machine Base Components



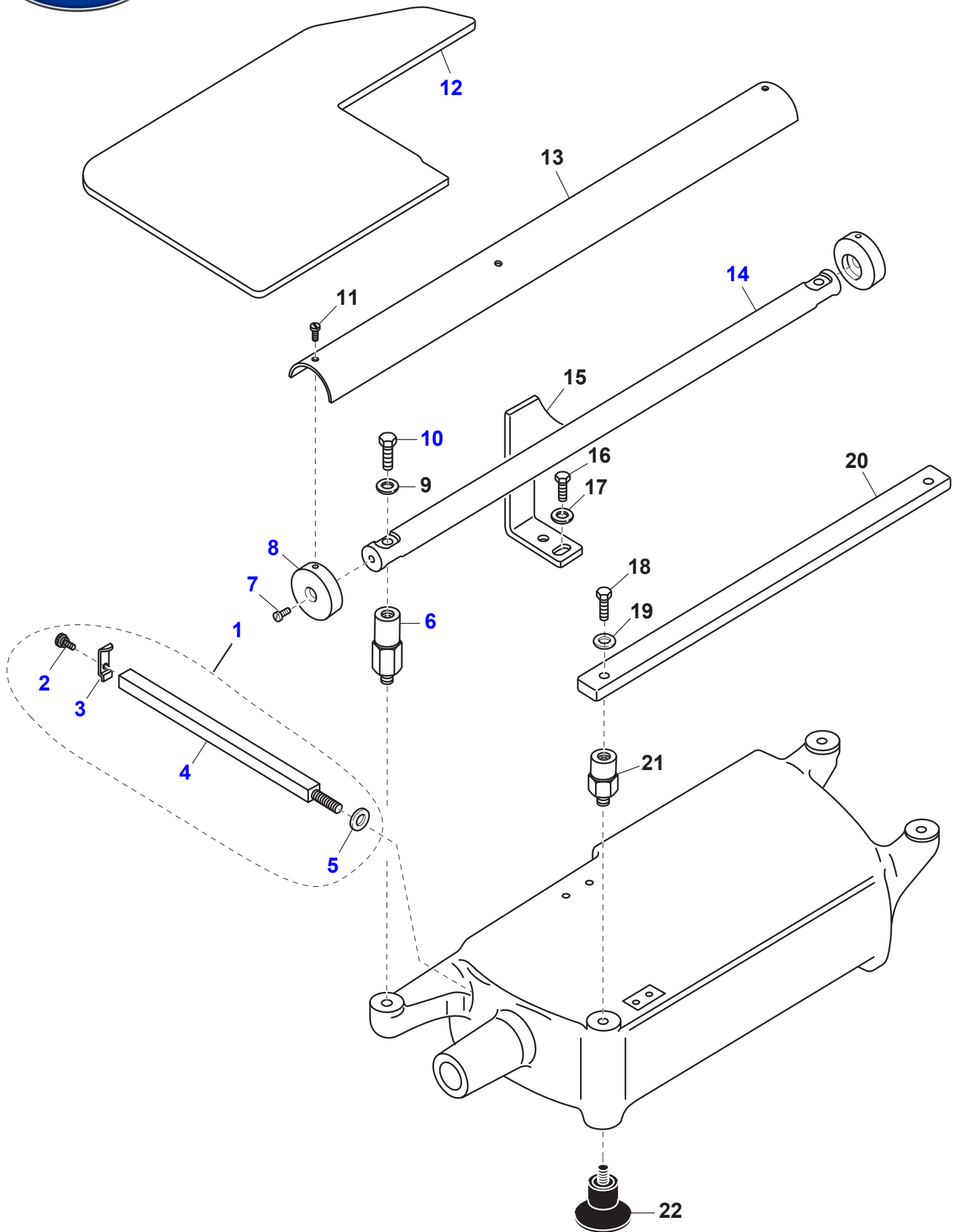


FS12 Machine Base Components

Item	Part Number	Description	Qty	Serial Number
1	R01598	Handle Assembly (Incls. items 2-5)	1	
2	R01687	Chrome Screw	1	
3		Operating Handle, Flywheel	1	
4	R01381	Pin M12-1.75x50 mm	1	
5		Nut M12-1.25 Hex Jam	1	
6	R01687	Chrome Screw	1	
7		Flywheel	1	
8	H01683	Set Screw M6-1.0 x .7mm	1	
9	R01595	Tapered Pin	1	
10		Flywheel Shaft	1	
11		Bushing	1	
12		Slicer Base	1	
13	R02338	Drive Chain Assembly (Incls. items 14-25)	1	
14	H01683	Set Screw M6-1.0 x .7mm	1	
15	R02105	Sprocket	1	
16	R01595	Tapered Pin	1	
17		Bushing	1	
18		Shaft, Gear	1	
19		Bearing	2	
20		Axle Bearing	1	
21	R01595	Tapered Pin	1	
22		Gear	1	
23	R02561	Chain Assembly (Incls. items 24-25)	1	
24	R01605	Drive Chain	1	
25	R02562	Chain Connector	1	
26	R02343	Axle Kit (Incls. items 27-31)	1	
27		Bearing	2	
28		Axle Bearing	1	
29		Gear	1	
30	R01595	Tapered Pin	1	
31	H02247	Thick Washer 1.4" OD x 1" ID	3	
32	R02184	Oil Fitting	2	
33	R02345	Bearing Assembly, Bevel Gear (Incls. items 34-41)	1	
34		Bearing	2	
35		Axle Bearing	1	
36		Bushing	2	
37		Washer, Lock	2	
38		Nut M12-1.25 Hex Jam	1	
39		Shaft, Gear	1	
40		Gear, Bevel	1	
41	R01595	Tapered Pin	1	



FS12 Slide Rod Components



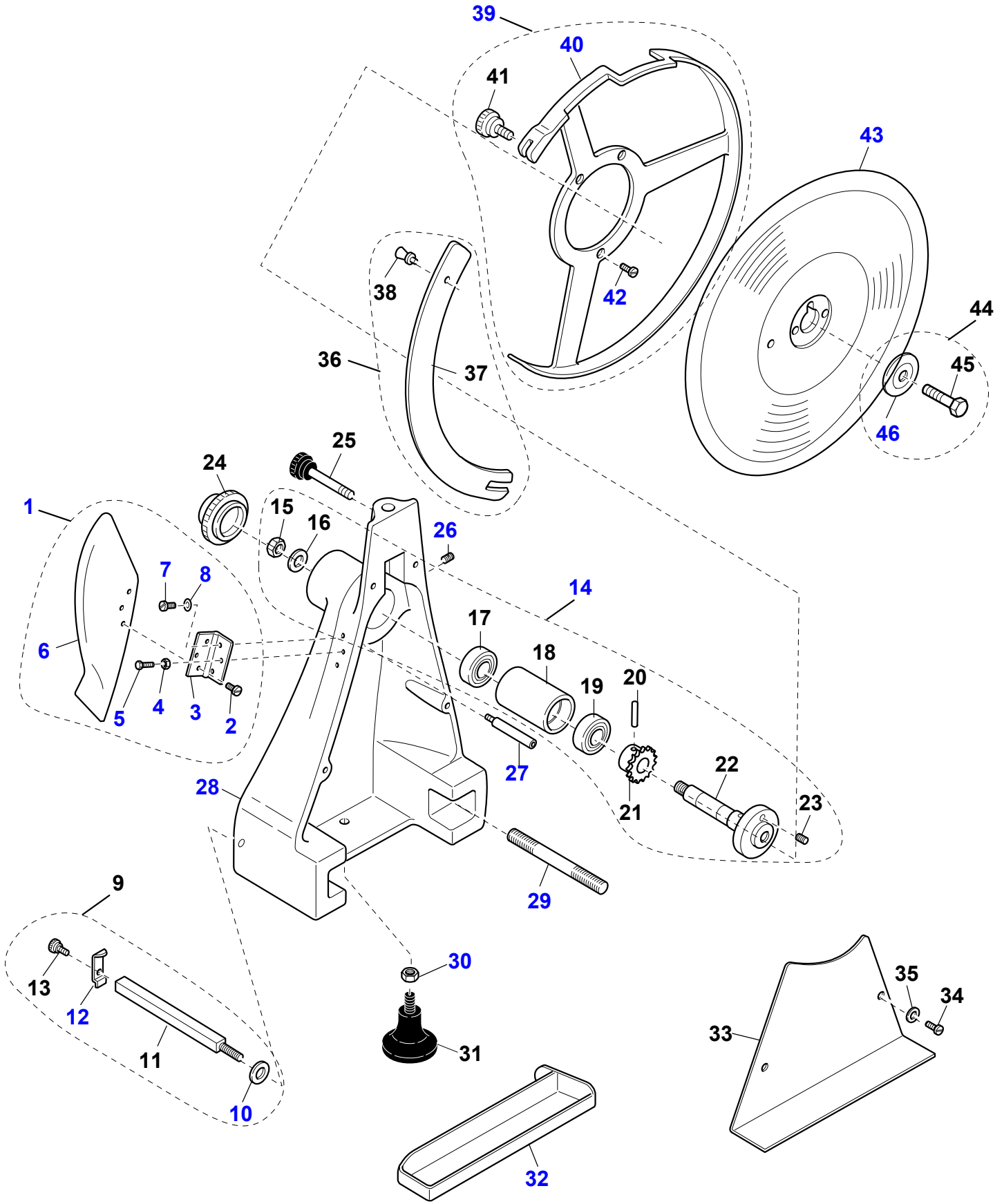


FS12 Slide Rod Components

Item	Part Number	Description	Qty	Serial Number
1	R02248	Support Bar Assembly (Incls. items 2-5)	1	
2	H01574	Thumb Screw	1	
3		Support Bracket, Tray	1	
4		Support Bar	1	
5	H01573	Washer M4x12mm	2	
6		Support, Slide Rod	2	
7	H02238	Screw, Set M4-18 mm	2	
8		Stop, Round Bar	2	
9	H02564	Washer	2	
10	H02236	Screw, Hex Cap M8-1.25x31.75mm	2	
11	H02239	Screw, Flat Hd Slotted M3-0.5x6.35mm	2	
12	R02573	Tray, SS	1	
13		Cover, Slide Bar	1	
14	R02116	Slide Rod	1	
15		Support Bracket, Slide Rod	1	
16	X08007	Screw, M6-1.0 x 16 mm Hex Hd	1	
17	H02565	Washer	1	
18	H02237	Screw, Flat Hd Slotted M8-1.25 x .20.32mm	2	
19	H02564	Washer	4	
20	R02117	Slide Bar	1	
21		Support, Slide Bar	2	
22	R01369	Foot	4	



FS12 Knife Blade Components



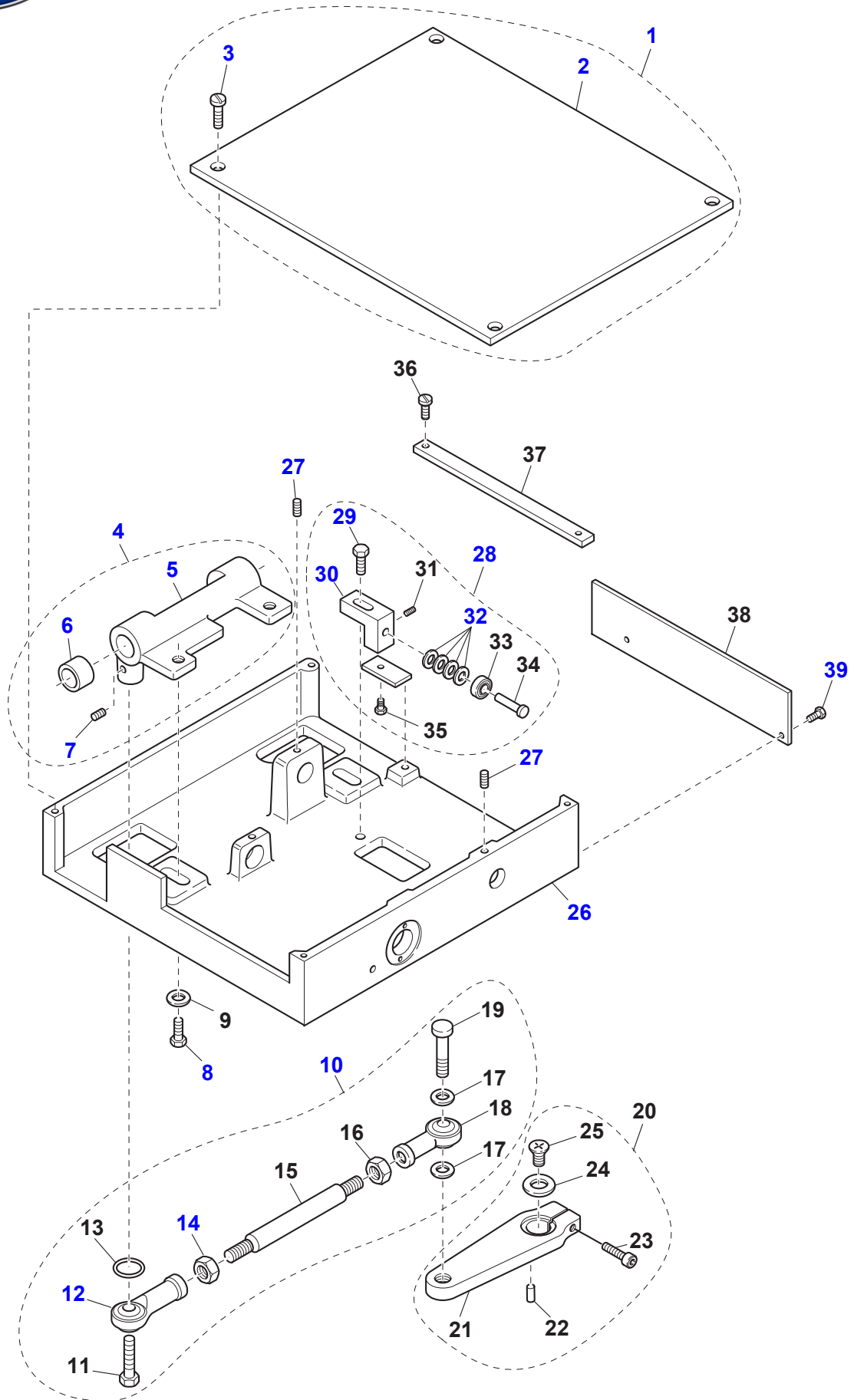


FS12 Knife Blade Components

Item	Part Number	Description	Qty	Serial Number
1	R02349	Deflector Assembly (Incls. items 2-8)	1	
2	H02566	Screw, Thumb M4-0.7 x 8.89mm	3	
3		Hinge	1	
4	H02567	Nut, M8-1.25	3	
5	H02566	Screw, Thumb M4-0.7 x 8.89mm	3	
6		Slice Deflector	1	
7	H02566	Screw, Thumb M4-0.7 x 8.89mm	3	
8	H02567	Nut, M8-1.25	3	
9	R02350	Support Bar Kit (Incls. items 10-13)	1	
10	H01573	Washer M4x12mm	1	
11		Support Bar	1	
12		Support Bracket, Tray	1	
13	H01574	Thumb Screw	1	
14	R02351	Bearing Assembly (Incls. items 15-23)	1	
15		Nut	1	
16	H01898	Washer	1	
17		Bearing	1	
18		Sleeve, Bearing	1	
19		Bearing	1	
20	R02358	Tapered Pin	1	
21		Gear	1	
22		Bearing and Shaft	1	
23		Set Screw, Hex Recessed M6-1.0 x 7.62mm	1	
24	R02130	Cap	1	
25	R02667	Knob	1	
26	H02376	Set Screw, Hex Recessed M6-1.0 x 7.62mm	1	
27	R02191	Spacer	1	
28		Knife Housing	1	
29		Rod, Threaded M12-1.5x102 mm	2	
30	H02567	Nut, M8-1.25	1	
31	R01369	Foot	1	
32	R02352	Drip Tray	1	
33	R02128	Guard	1	
34	H02370	Screw	2	
35	H02371	Washer	2	
36	R02362	Knife Guard Assembly (Incls. items 37-38)	1	
37		Guard, Knife	1	
38	R01704	Thumb Screw	1	
39	R02360	Rim Guard (Incls. items 40-42)	1	
40		Rim Guard, Knife	1	
41		Thumb Screw	1	
42	H02361	Screw, Slotted Top M5-0.8 x 12.7mm	3	
43	R02126	Knife	1	
44	R02363	Knife Securing Kit (Incls. items 45-46)	1	
45	H02364	Screw, Hex Cap M8-1.25	1	
46		Washer, Knife	1	
47	R02244	Warning Label (Not Shown)	1	
48	H01573	Washer M4x12mm (Not Shown)	2	
49	H02359	Nut, Hex M5-0.8 (Not Shown)	2	



FS12 Carriage Assembly Components





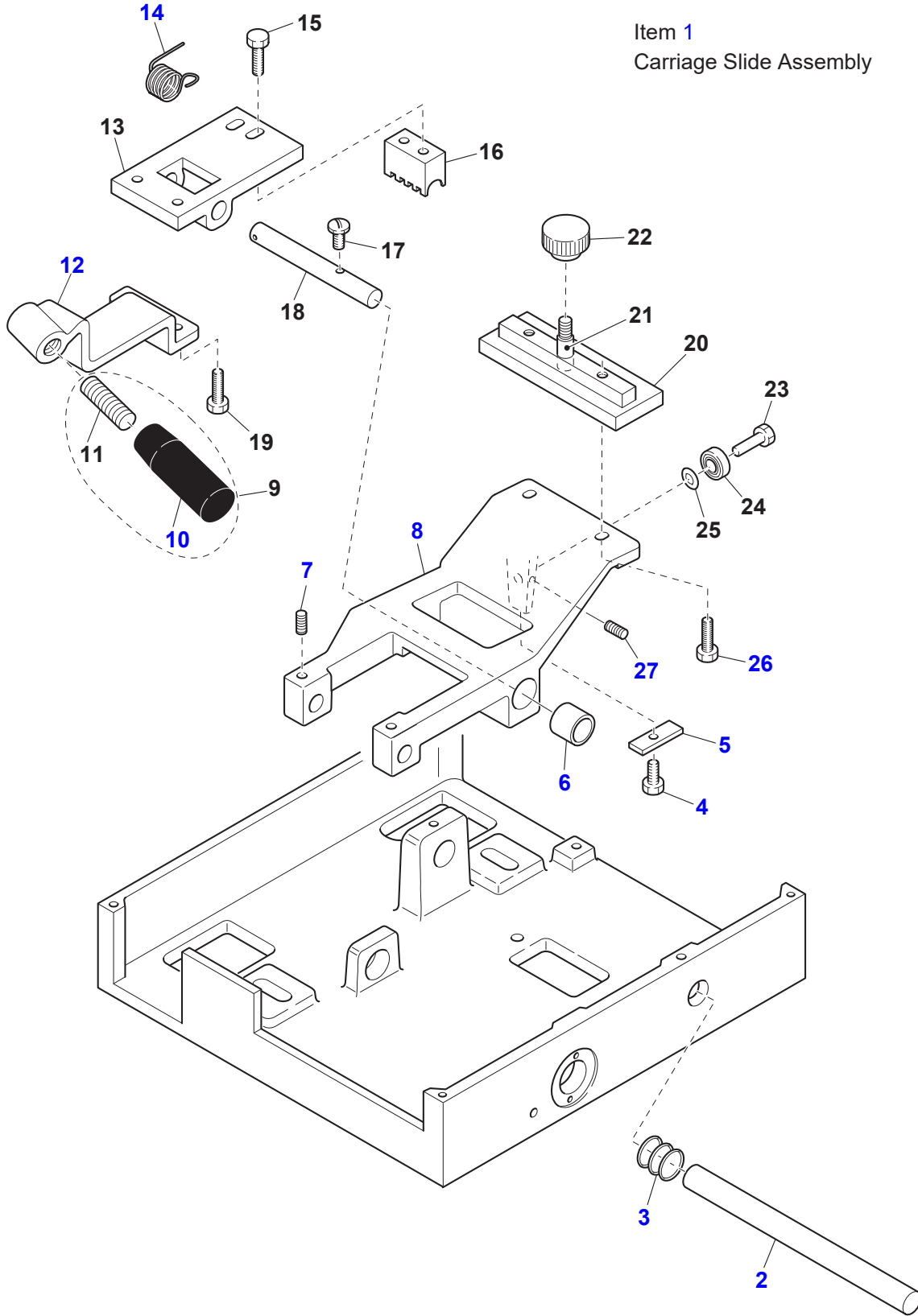
FS12 Carriage Assembly Components

Item	Part Number	Description	Qty	Serial Number
1	R02378	Base Cover Assembly (Incls. items 2-3)	1	
2		Carriage Base Cover	1	
3	H02379	Threaded Rod	4	
4	R02380	Slide Assembly (Incls. items 5-7)	1	
5		Slide	1	
6	R01383	Bushing	1	
7	R02383	Set Screw, Hex Hd Recessed M5-0.8 x 6.35 mm	1	
8	R02381	Screw, Hex Hd Cap M8-1.25 x 25.4 mm	2	
9	R02382	Washer 31.75 OD x 8.255 ID mm	2	
10	R02384	Tie Rod Assembly (Incls. items 11-19)	1	
11	H02385	Screw, Hex Hd Cap M10-1.5 x 38.1 mm	1	
12		Tie Rod Joint	1	
13	R02386	O-Ring	1	
14	H02387	Nut, Hex Hd Jam M10-1.25	2	
15		Tie Rod	1	
16	H02387	Nut, Hex Hd Jam M10-1.25	1	
17		Washer, Brass	2	
18		Tie Rod Joint	1	
19	H02389	Cap Screw, Socket Hd	1	
20	R02390	Inertia Chute Drive Assembly (Incls. items 21-25)	1	
21		Inertia Chute Drive	1	
22	H02392	Plug	1	
23	H02393	Cap Screw M6-1.0 x 31.75 mm	1	
24	H02395	Washer M6 OD 1.25	1	
25	H01690	Screw M8-1.25x20mm Socket Hd Cap	1	
26		Carriage Base	1	
27	H02407	Set Screw, Hex Hd Rec. M5-0.8 x 12.7mm	2	
28	R02396	Support Bracket Assembly (Incls. items 29-35)	1	
29	H00196	Screw	1	
30		Support Bracket, Slide Bar	1	
31		Set Screw, M5-.8 x 7.62 mm	1	
32		Washer	4	
33		Bearing	1	
34		Pin	1	
35		Screw, Hex Recessed Flat Hd M4-.7x13 mm	1	
36	R02404	Screw, Slotted Cap M5-0.8 x 12.7 mm	2	
37		Slide Bar, Inner Carriage	1	
38		Carriage Cover, Rear	1	
39	H02406	Screw, Flat Hd Slotted M3-0.5 x 12.7 mm	2	
40	H02375	Screw, Thumb M6-1.0 (Not Shown)	1	



FS12 Carriage Slide Components

Item 1
Carriage Slide Assembly



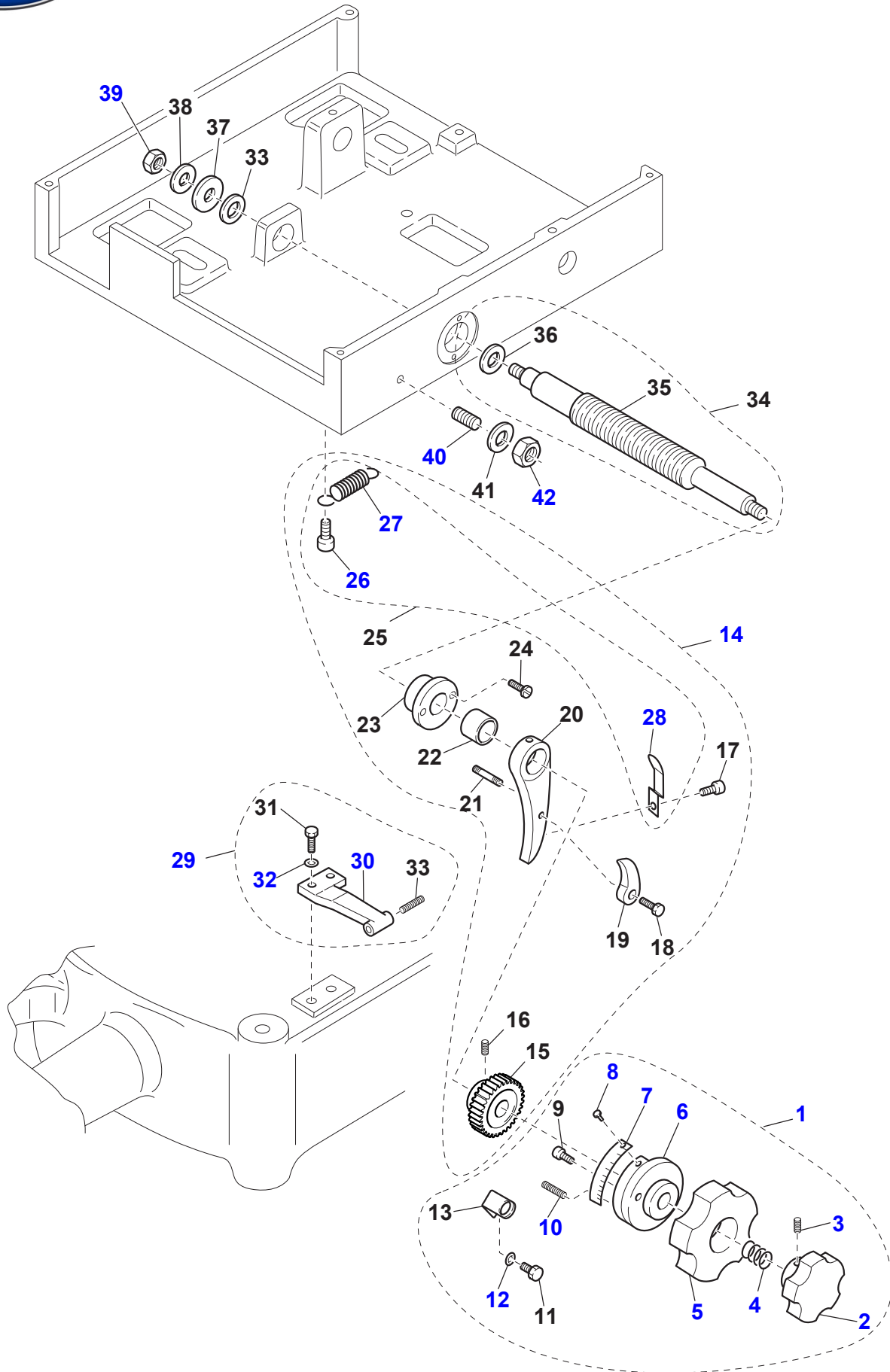


FS12 Carriage Slide Components

Item	Part Number	Description	Qty	Serial Number
1	R02408	Carriage Slide Assembly (Incls. items 2-27)	1	
2	R01785	Slide Rod	1	
3	R02179	Spring	1	
4		Screw, Slotted Cap M4-0.7x12.7mm	1	
5		Plate, Nut	1	
6		Bushing	2	
7		Set Screw, Hex Hd Recessed M5-0.8x2.5mm drive	2	
8		Slide, Carriage	1	
9	R02411	Handle Assembly (Incls. items 10-11)	1	
10		Operating Handle, Flywheel	1	
11		Rod, Threaded M6-1.5 x 51 mm	1	
12		Lever, Operating Handle	1	
13		Support Mount, Carriage	1	
14		Spring	1	
15		Screw, Hex Cap M6-1.0 x 12.7 mm	2	
16	R02200	Comb Block	1	
17		Screw, FH Slotted M4-0.7	1	
18		Pin, Tapered	1	
19		Screw, Hex Cap M6-1.0 x 15.875 mm	2	
20		Mount, Product Holder	1	
21		Mount Stud, Product Holder	1	
22	R02143	Release Knob	1	
23	H02426	Press Pin	1	
24		Bearing	1	
25		Washer, OD 11.43 x ID 6.35 mm	1	
26		Screw, Hex Cap M6-1.0 x .25 mm	2	
27		Set Screw, Hex Hd Recessed M4-0.7 2 x 6 mm drive	1	



FS12 Product Holder Components



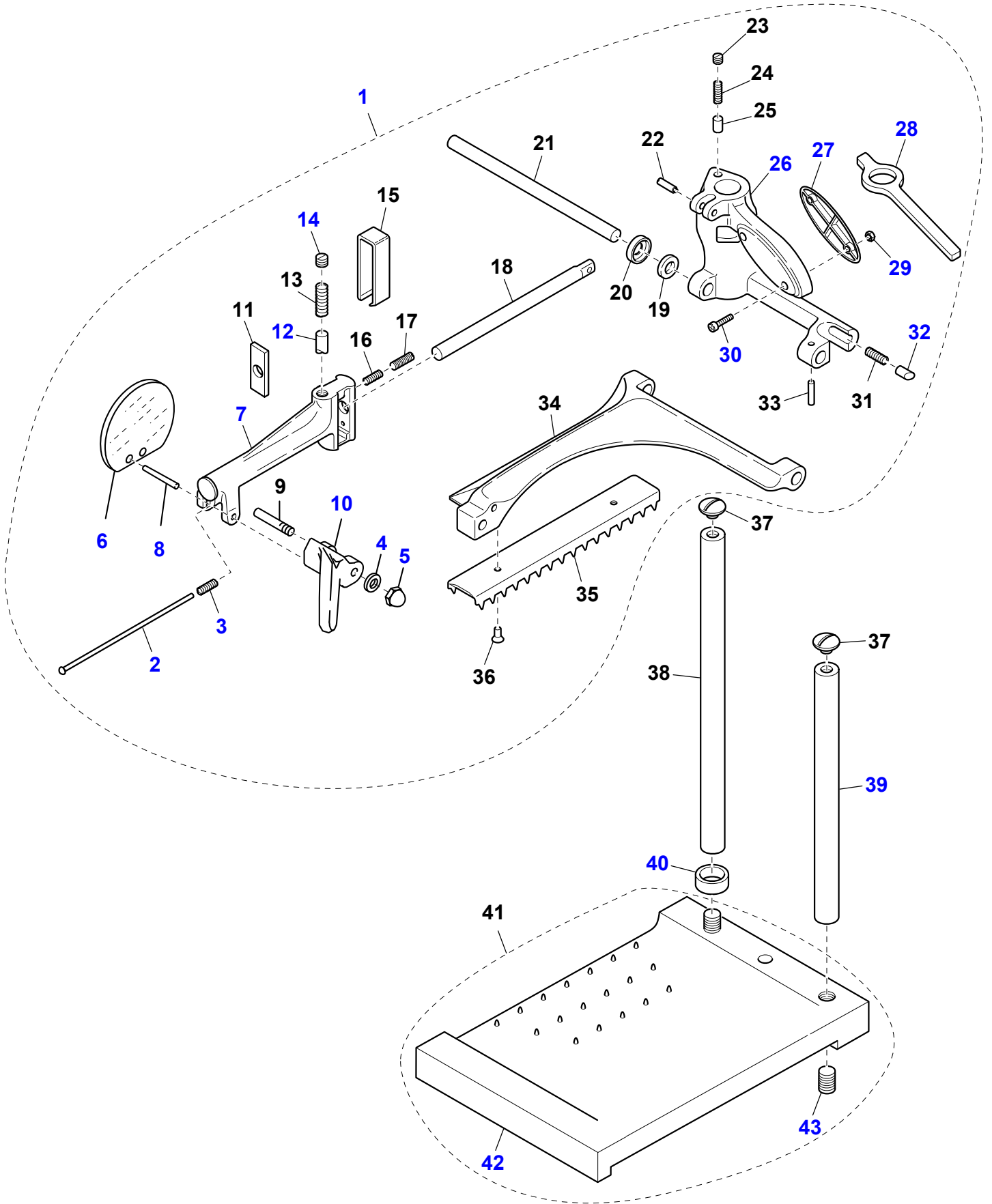


FS12 Product Holder Components

Item	Part Number	Description	Qty	Serial Number
1	R02427	Operating Knob Assembly (Incls. items 1-13)	1	
2		Product Holder Operating Knob	1	
3		Set Screw, Flat Hd Slotted M6-1.0 x 6.35 mm	1	
4		Spring	1	
5		Control Knob, Thickness	1	
6		Index Guide Cam	1	
7		Index Guide	2	
8		Revit	2	
9		Screw, Flat Hd Slotted M4-0.7 x 7.62 mm	1	
10		Set Screw, Slotted M4-0.7 x 19.05 mm	1	
11		Screw, Slotted Cap M4-0.7 x 12.7 mm	1	
12		Washer OD 9.0 x ID 4.0 mm	1	
13		Index Number Indicator	1	
14	R02571	Assembly, Skip Latch (Incls. items 15-28)	1	
15		Gear	1	
16		Set Screw, Flat Hd Slotted M6-1.0 x 6.35 mm	1	
17		Screw, Slotted Cap M4-0.7	1	
18		Screw, Flat Hd Slotted M5-0.8 x 12.7 mm	1	
19		Skip Latch, Small	1	
20		Skip Latch, Large	1	
21		Pin M5-0.8 x .25 mm	1	
22		Bushing	1	
23		Bushing, Feed Screw	1	
24		Screw, Flat Hd Slotted M5-0.8 x 12.7 mm	2	
25	R02420	Spring Kit (Incls. items 26-28)	1	
26		Screw, Slotted Cap M4-0.7	1	
27		Spring	1	
28		Spring, Skip Latch	1	
29	R02433	Carriage Stop Assembly (Incls. items 30-33)	1	
30		Carriage Stop	1	
31		Screw, Hex Cap M6-1.0 x .25 mm	2	
32		Washer OD 17.78 x 6.35 ID mm	2	
33		Set Screw M8-1.25 x 31.75 mm	1	
34	R02419	Feed Screw Shaft Assembly (Incls. items 35-36)	1	
35		Shaft, Feed Screw	1	
36		Washer	2	
37		Washer, Wave	1	
38		Washer	1	
39		Nut M6-1.0mm Hex	1	
40		Set Screw M8-1.0	1	
41	H01898	Washer	1	
42		Nut M6-1.0mm Hex	1	



FS12 Product Tray Components





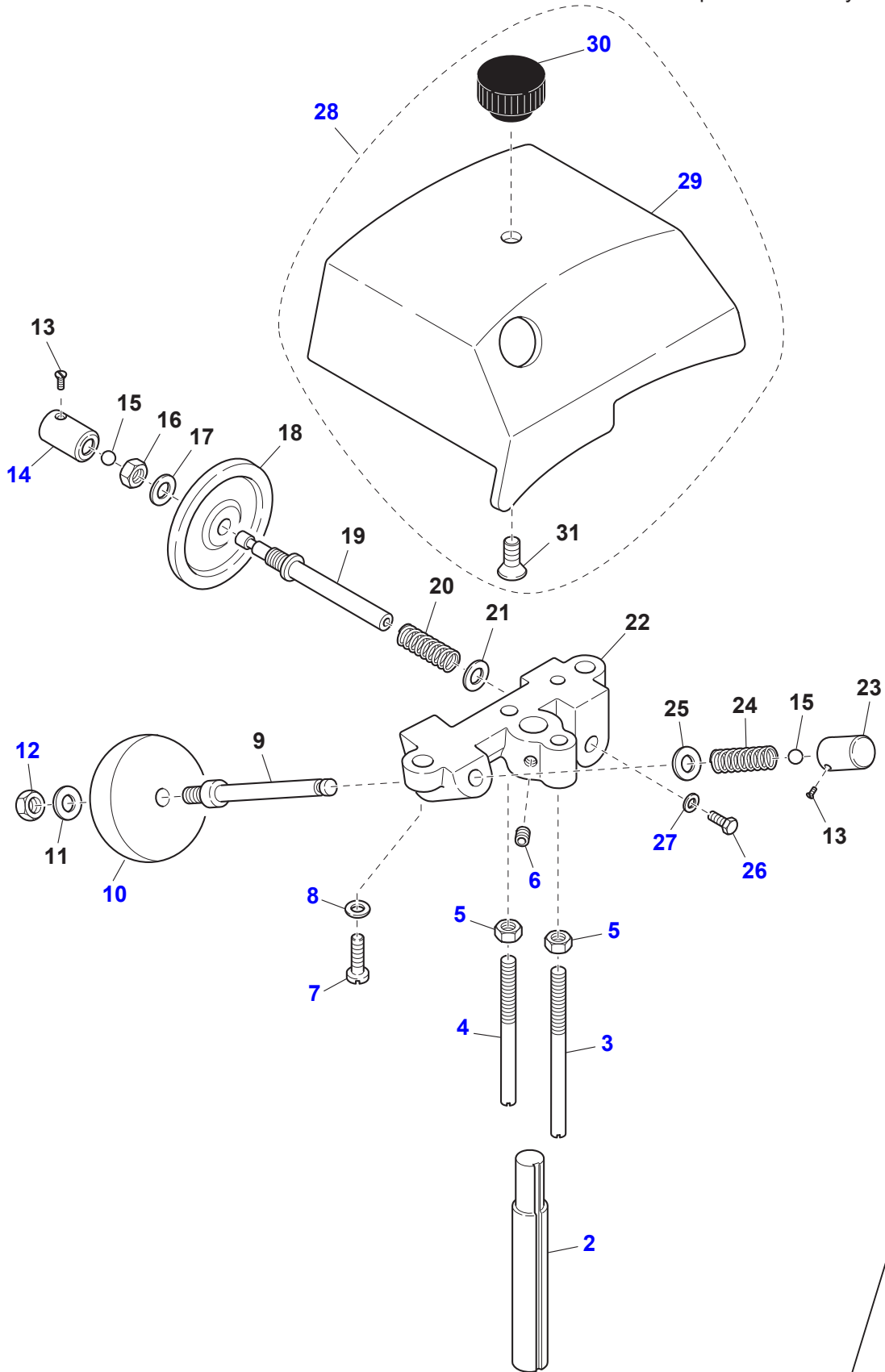
FS12 Product Tray Components

Item	Part Number	Description	Qty	Serial Number
1	R02173	Arm Assembly (Incls. items 2-36)	1	
2		Rod	1	
3		Spring	2	
4	H01898	Washer	1	
5	H01938	Acorn Nut	1	
6	R02155	Guard	1	
7		Lever Arm	1	
8		Rod, Threaded	1	
9		Pin	1	
10		Lever	1	
11		Plate	1	
12		Plug, Brass Tension	1	
13		Spring	1	
14		Set M10-1.0 x 10.16 mm Screw	1	
15	R02159	Cover	1	
16		Spring	1	
17		Set M6-1.0 x 19.05 mm Screw	1	
18		Lever Arm Rod	1	
19		Bushing	1	
20		Spacer	1	
21		Arm Rod, Grip Plate	1	
22		Pin	1	
23		Set M8-1.25 x 10.16 Screw	1	
24		Spring	1	
25		Plug, Brass Tension	1	
26		Handle Support	1	
27	R02163	Grip	1	
28		Pusher Lever	1	
29	H02456	Nut	2	
30	H02457	Screw	2	
31		Spring	1	
32		Plug, Brass Tension	1	
33		Pin	1	
34		Grip Plate Arm	1	
35		Grip Plate	1	
36		Screw M5-0.8 x 22.86 mm Hex Cap	2	
37	H02468	Screw M8-1.25 x 12.7 mm Slotted	2	
38	R02195	Slide Rod, 11.5"	1	
39	R02168	Slide Rod, 9"	1	
40	R02196	Spacer	2	
41	R02403	Sliding Product Holder Assembly (Incls. items 42-43)	1	
42		Holder, Sliding Product	1	
43	H02445	Set Screw	2	



FS12 Sharpener Assembly Components

Item 1
Sharpener Assembly





FS12 Sharpener Assembly Components

Item	Part Number	Description	Qty	Serial Number
1	R02572	Sharpener Assembly (Incls. items 2-31)	1	
2		Shaft, Sharpener	1	
3		Pin	1	
4		Pin	1	
5		Nut M6-1.0mm Hex	2	
6		Set Screw M6-1.0x8mm Hex Hd	1	
7		Screw M5-0.8x16mm Flat Hd	2	
8	H01861	Washer M4x10OD mm Flat	2	
9		Shaft, Sharpener Stone	1	
10	R01854	Sharpening Stone	1	
11		Washer M6x13 OD mm Flat Hd	1	
12		Nut M6-1.0x10mm Hex	1	
13		Screw 45-1.45x3mm Flat Hd	2	
14		Push Button, Sharpener	1	
15		Bearing, Ball	2	
16		Nut M6-1.0x10mm Hex	1	
17		Washer M6x13 OD mm Flat Hd	1	
18	R01865	Deburring Stone	1	
19		Shaft, Sharpener Stone	1	
20		Spring	1	
21	H01573	Washer M4x12mm	1	
22		Housing, Sharpener	1	
23		Push Button, Sharpener	1	
24		Spring	1	
25	H01573	Washer M4x12mm	1	
26		Screw 39-.5x5mm Flat	1	
27		Washer M2.5x60 OD mm Flat	1	
28	R02563	Sharpener Cover Assembly (Incls. items 29-31)	1	
29		Cover, Sharpener	1	
30	R02172	Sharpener Cover Knob	1	
31	H02570	Screw, Hex Rec. Flat Hd M6-1.0 x 12 mm	1	