

# Parts Catalog



**E300**

## **Slicing Machine Serial Number 4121725 and Up Model: E300**

05/22/2023 Rev. C

**IMPORTANT!**

TO EXPEDITE SHIPMENT OF PARTS, ALWAYS SPECIFY MODEL, REV,  
PART NUMBER, AND SERIAL NUMBER OF UNIT.

### **GLOBE FOOD EQUIPMENT COMPANY**

2215 East River Road  
Dayton, Ohio 45439

#### **Parts Department**

Toll Free 1-800-745-6238 · Fax (937) 290-0585

E-Mail: [info@globefoodequip.com](mailto:info@globefoodequip.com)

Website: [www.globefoodequip.com](http://www.globefoodequip.com)

Not for resale

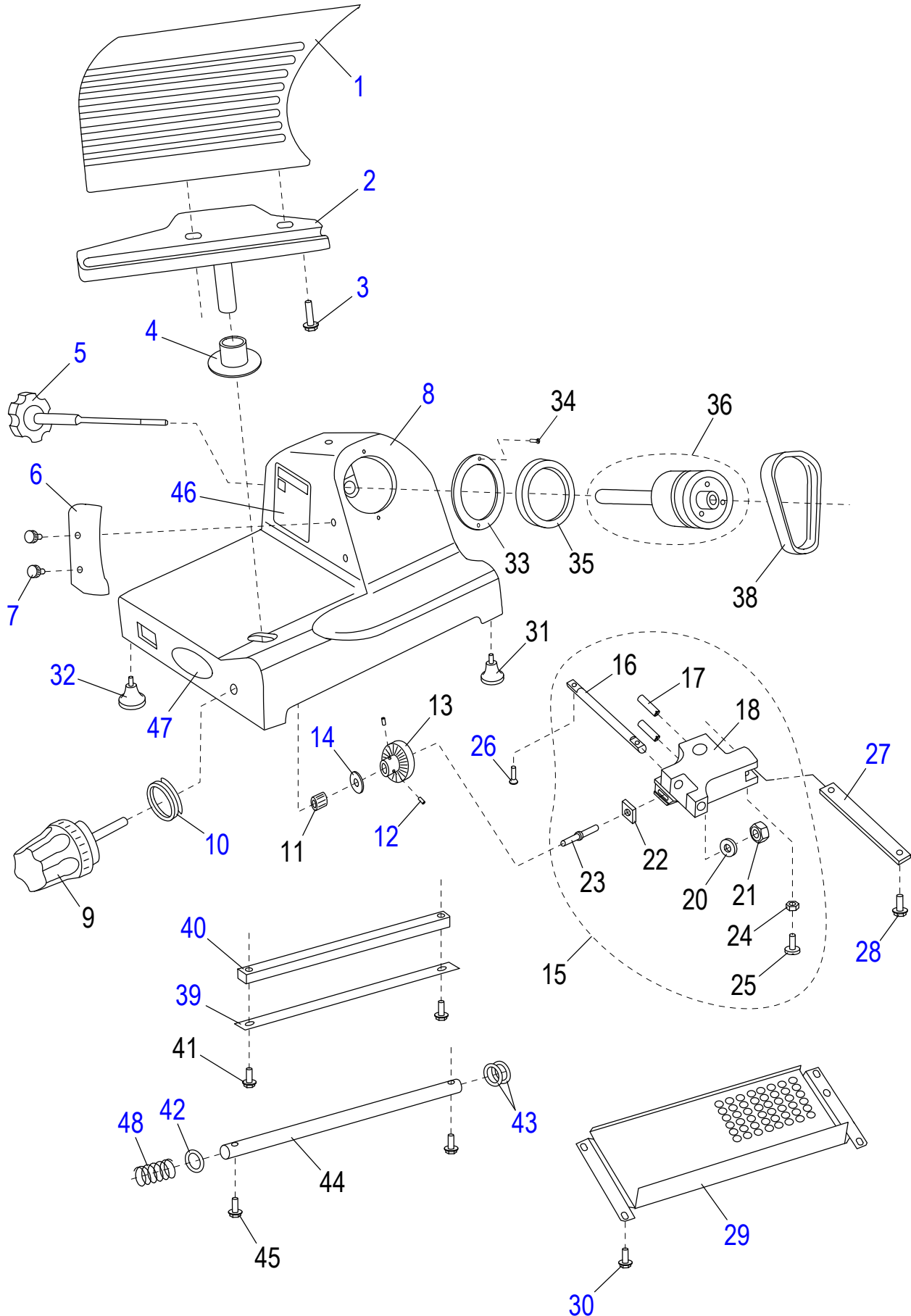


# Table of Contents

Description	Page
E300 Slicer Base Components	4
E300 Chute Components	6
E300 Knife & Sharpener Components	8
E300 Electrical Components	10
E300 Wiring Diagram	12



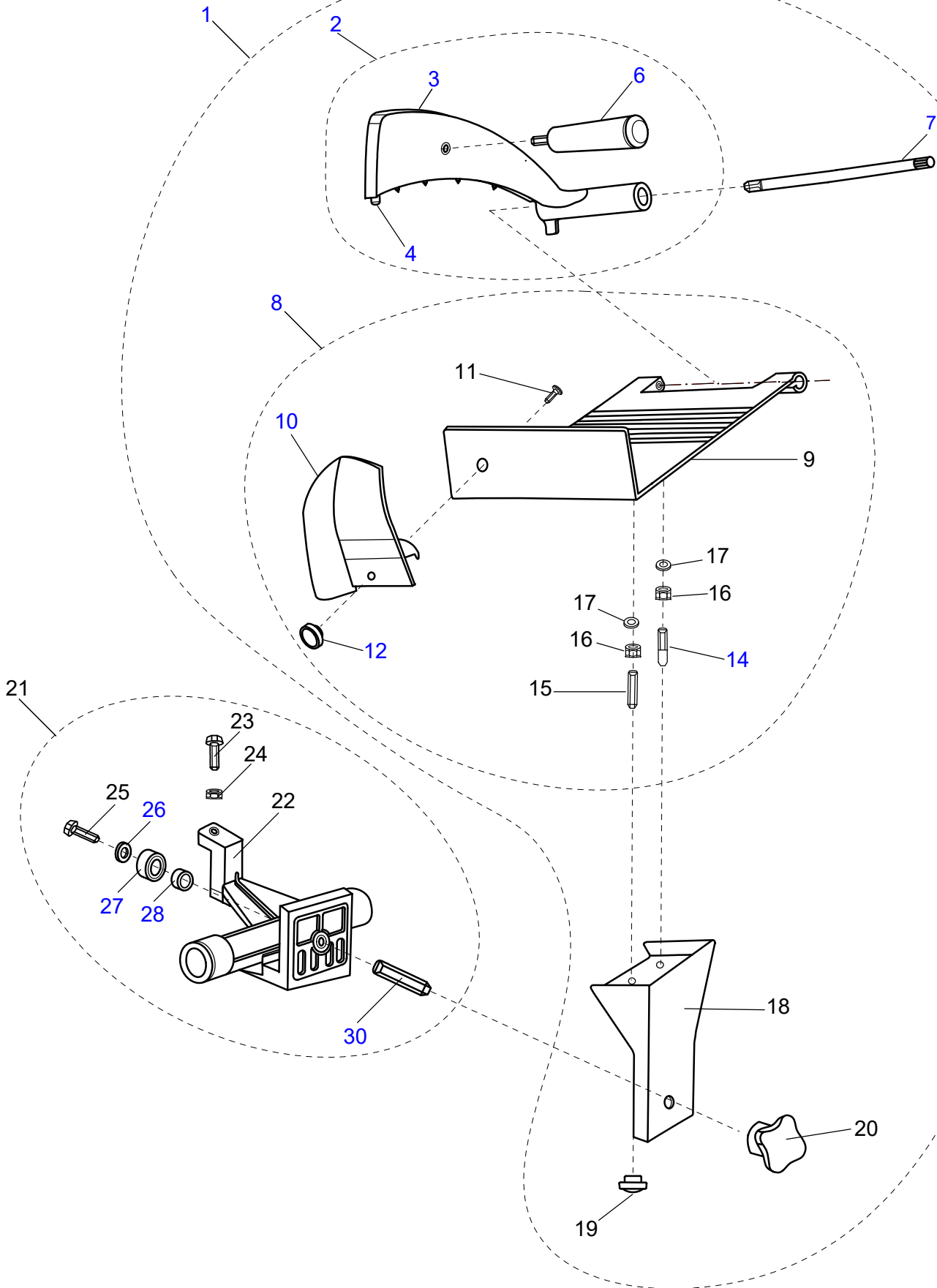
# E300 Slicer Base Components





## E300 Slicer Base Components

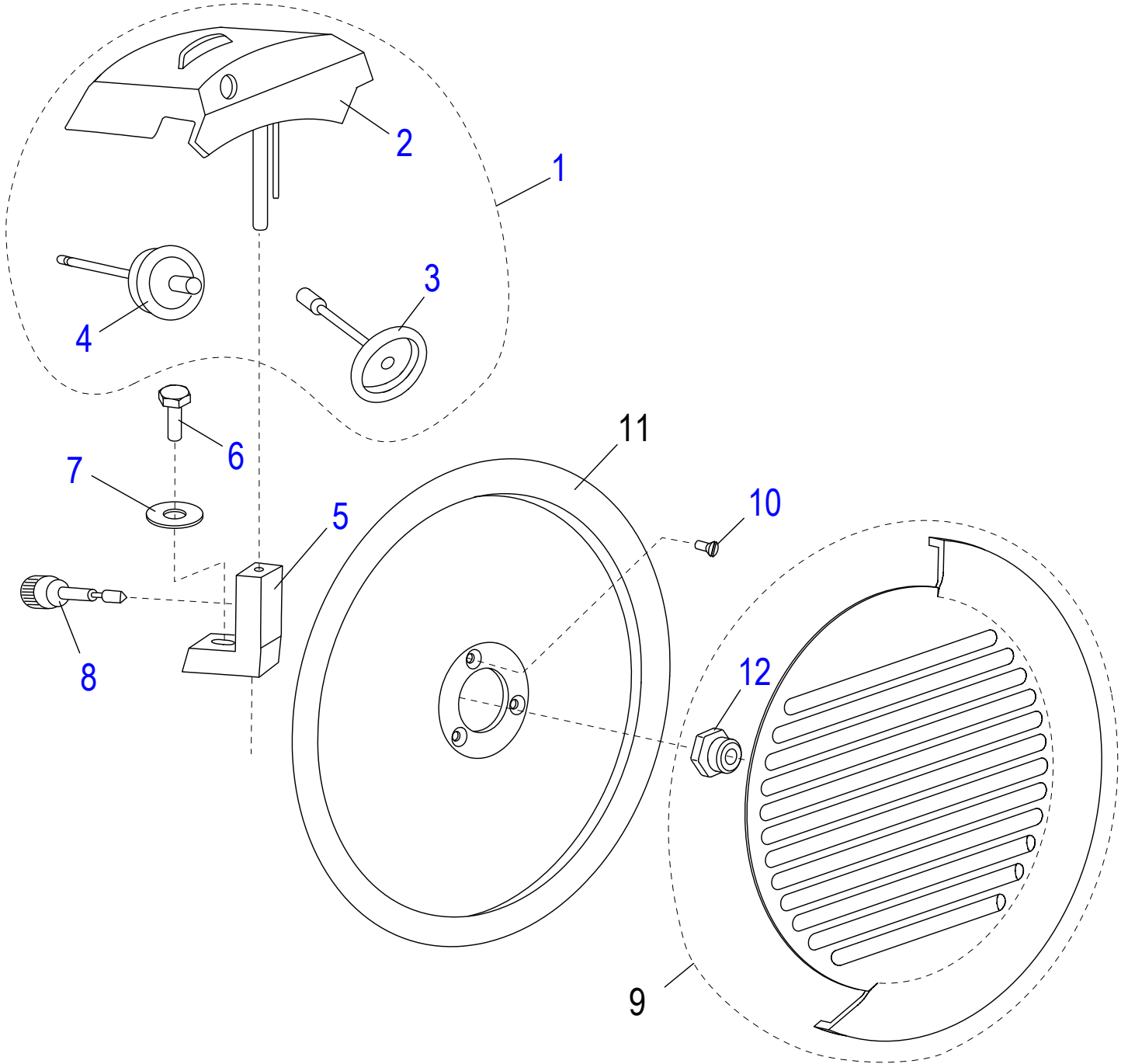
Item	Part Number	Description	Qty	Serial Number
1	G00068	Table	1	
2	G00073	Table Support	1	
3	H00046	Hex Head Screw M6 x 35 - Zn	2	
4	G00076	Hole Cover	1	
5	ET12	Knife Cover Release Knob	1	
6	ET23	Slice Deflector	1	
7	22-A	Screw	2	
8		Aluminium Base	1	
9	G00079	Index Knob	1	
10	G00081	V Seal	1	
11	G00082	Sleeve	1	
12	H00047	Set Screw, M5x5 Flat Pt, Hex Socket - BO	2	
13	27	Cam	1	
14		Wavy Washer	1	
15	ET33	Table Slide Assembly	1	
16		Table Adjustment Shaft	1	
17	H00048	Set Screw, M8x8 Cup Pt, Hex Socket - BO	2	
18		Table Slide	1	
19		Bearing, Table Slide (Not Shown)	2	
20	M035	Flat Washer ID 6.5 OD 12 TH 1.5 mm Zinc	1	
21	M034	Hex Nut M6x1.0 OD 10 mm TH 5 mm Zinc	1	
22	H00044	Square Nut M6 - Zn	1	
23		Indexing Cam Conic Shaft	1	
24	X30186	Hex Nut M5-0.8 OD-8, TH-4mm, Zinc	1	
25	H00049	Screw, Slotted Cyl Hd M5x16 - Brass	1	
26	M048	Flat Hd Screw M5x0.8x16 mm, Zinc 8.8 Slotted	2	
27		Plate, Table Adjustment	1	
28	H00051	Cap Screw, Hex Washer Head M5 x 10 - Zn	2	
29	G00083	Bottom Cover	1	
30	H00061	Hex Head Screw M5x10, Zinc	4	
31	D40	Foot (4/Set)	4	
32	G00085	Large Foot	2	
33	ET52A	Washer	1	
34	H00052	Screw Slotted Cyl Head M4 x 8 - Zn	2	
35	ET52C	V Seal	1	
36	G00086	Drive Hub Assembly	1	
37	H00053	Retaining Ring, Internal (Not Shown)	1	
38	55	Belt	1	
39	G00089	Wear Strip	1	
40	G00091	Square Slide Bar	1	
41	H00055	Cap Screw, Hex Washer Head M5 x 23 - Zn	2	
42	H00058	O Ring ø 4x17	3	
43	50-A	Spring	1	
44	G00092	Round Slide Rod	1	
45	H00055	Cap Screw, Hex Washer Head M5 x 23 - Zn	2	
46	81	Warning Label	1	
47	83-A	Chefmate Logo	1	
48	H00059	Spring	1	





## E300 Chute Components

Item	Part Number	Description	Qty	Serial Number
1	G02888	Complete Chute Assembly	1	
2	G02890	End Weight Assembly	1	
3		End Weight	1	
4	63-B	Bumper	1	
5		Bushing (Not Shown)	2	
6	G02892	End Weight Handle	1	
7	G02889	End Weight Rod	1	
8	G02893	Chute Assembly	1	
9		Food Chute	1	
10	G02895	Guard	1	
11	56-A	Flat HD Screw- Slotted, ZINC-8.8	1	
12	G02896	Chute Guard Knob	1	
13	H02903	Nut, T-Slot M6 (Not Shown)	2	
14	H02904	1/2 Threaded Pin	1	
15	H02905	Threaded Rod	1	
16	H02906	Hex Nut, M6	2	
17	H02907	Flat Washer	2	
18	G02897	Chute Support	1	
19	G02898	Chute Unlock Knob	1	
20	72	Chute Support Knob	1	
21	46	Chute Slide Assembly	1	
22		Chute Slide	1	
23	H00145	Screw, Hex Head M6 x 20 mm - Nylon	1	
24	M034	Hex Nut M6x1.0 OD 10 mm TH 5 mm Zinc	1	
25	H00043	Hex Head Screw M6 x 25 mm- Zn	1	
26	M035	Flat Washer ID 6.5 OD 12 TH 1.5 mm Zinc	1	
27	MCA29	Bearing (626 2RS)	1	
28	G02901	Spacer	1	
29		Bushing (Not Shown)	2	
30	46-A	Threaded Rod	1	

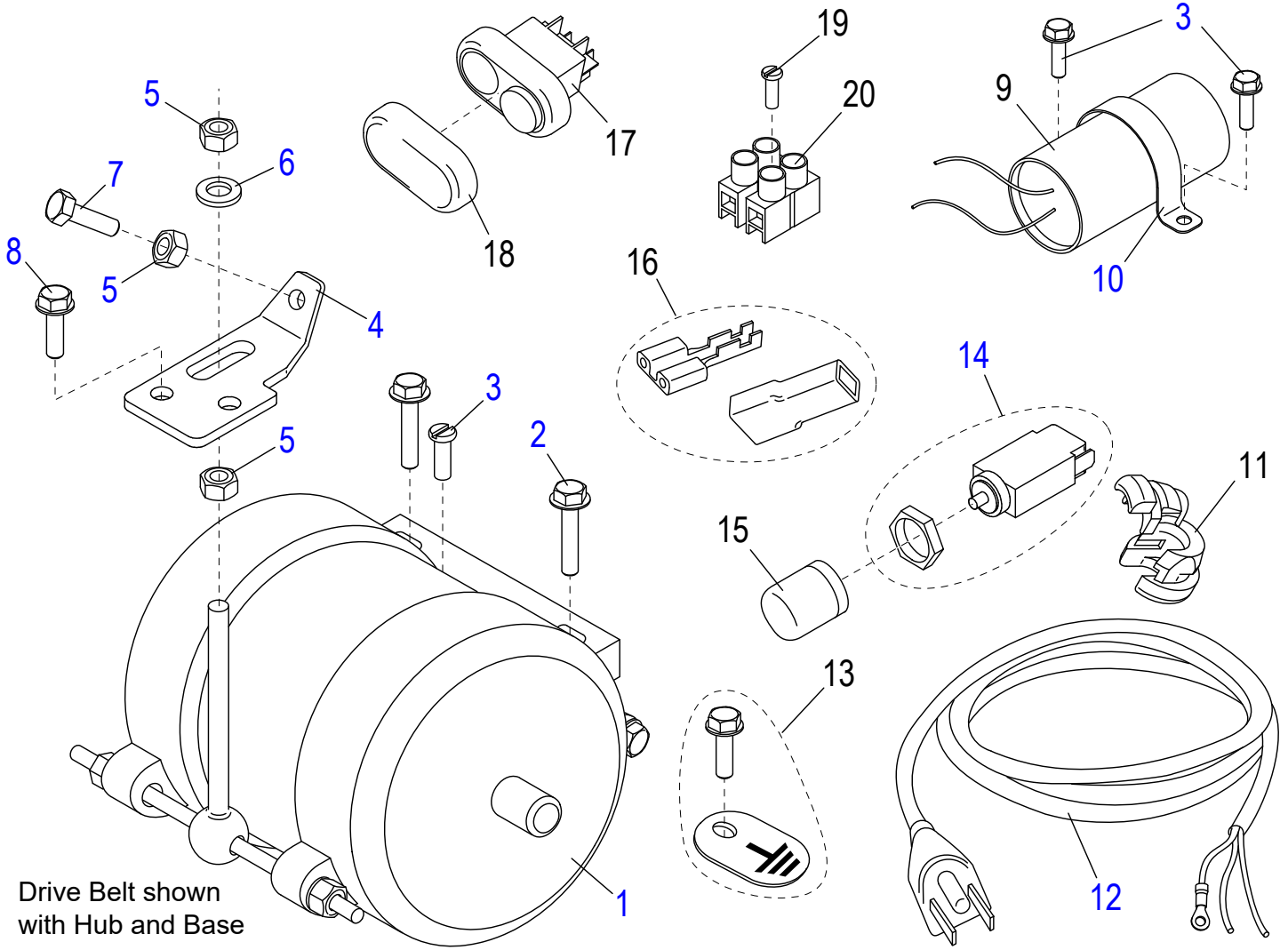




## E300 Knife & Sharpener Components

---

Item	Part Number	Description	Qty	Serial Number
1	G00097	Sharpener Assembly	1	
2	ET1	Sharpener Cover	1	
3	G00103	Sharpening Stone	1	
4	G00106	Deburring Stone	1	
5	ET9	Sharpener support	1	
6	H00118	Screw, Hex Head M8 x 22 - Zn	1	
7	H00121	Flat Washer, Large Diameter M8 x 20 x 2 - Zn	1	
8	10-B	Sharpener Adjustment Knob	1	
9	G02744	Knife Cover	1	
10	56-A	Flat HD Screw- Slotted, ZINC-8.8	3	
11	58	Knife	1	
12	59-A	Insert	1	





## E300 Electrical Components

---

Item	Part Number	Description	Qty	Serial Number
1	G00149	Motor (115V/60 Hz/2.7A)	1	
2	H00051	Cap Screw, Hex Washer Head M5 x 10 - Zn	2	
3	H00061	Hex Head Screw M5x10, Zinc	1	
4		Belt Tightener Plate	1	
5	H00020	Hex Nut, M6	3	
6	H00014	Flat M6 Washer - Zn	1	
7	H00043	Hex Head Screw M6 x 25 mm- Zn	1	
8	H00061	Hex Head Screw M5x10, Zinc	3	
9	ET31	Capacitor	1	
10		Capacitor Holder	1	
11	877	Strain Relief	1	
12	132-3	Power Cord	1	
13	G00152	Ground Screw	1	
14	89	Reset Switch	1	
15	G00154	Reset Switch Cover	1	
16	G00167	Terminal & Insulator	6	
17	ET28-1	Power Switch	1	
18	G00153	Power Switch Cover	1	
19	M029	Screw	1	
20	G00155	Terminal Block w/Screw	1	



# E300 Wiring Diagram

