

Parts Catalog



C12

Slicing Machine

Model: C12

5/8/2023 Rev G

IMPORTANT!

TO EXPEDITE SHIPMENT OF PARTS, ALWAYS SPECIFY MODEL, REV,
PART NUMBER, AND SERIAL NUMBER OF UNIT.

GLOBE FOOD EQUIPMENT COMPANY

2215 East River Road
Dayton, Ohio 45439

Parts Department

Toll Free 1-800-745-6238 · Fax (937) 290-0585

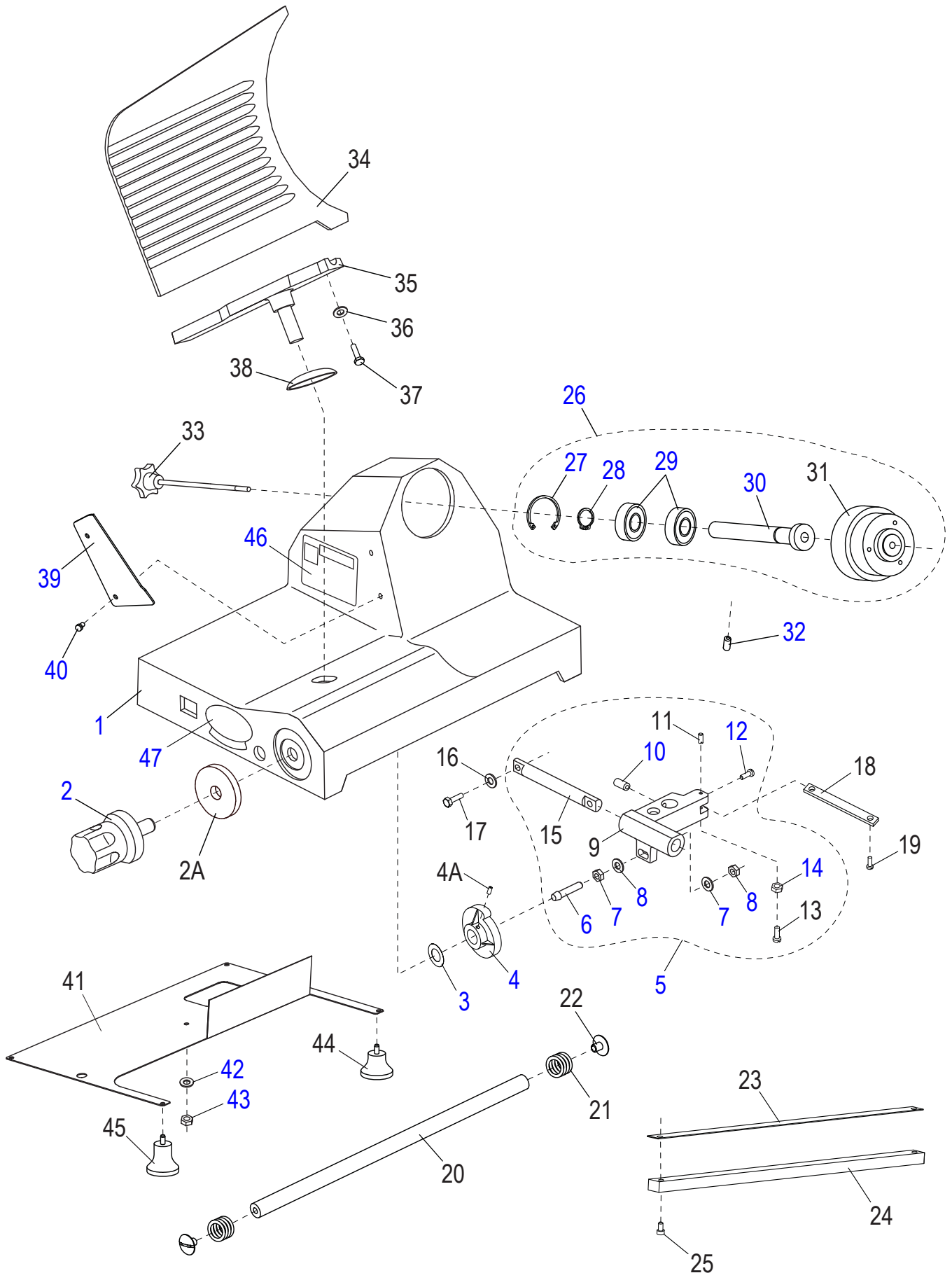
E-Mail: info@globefoodequip.com

Website: www.globefoodequip.com

Not for resale

Table of Contents

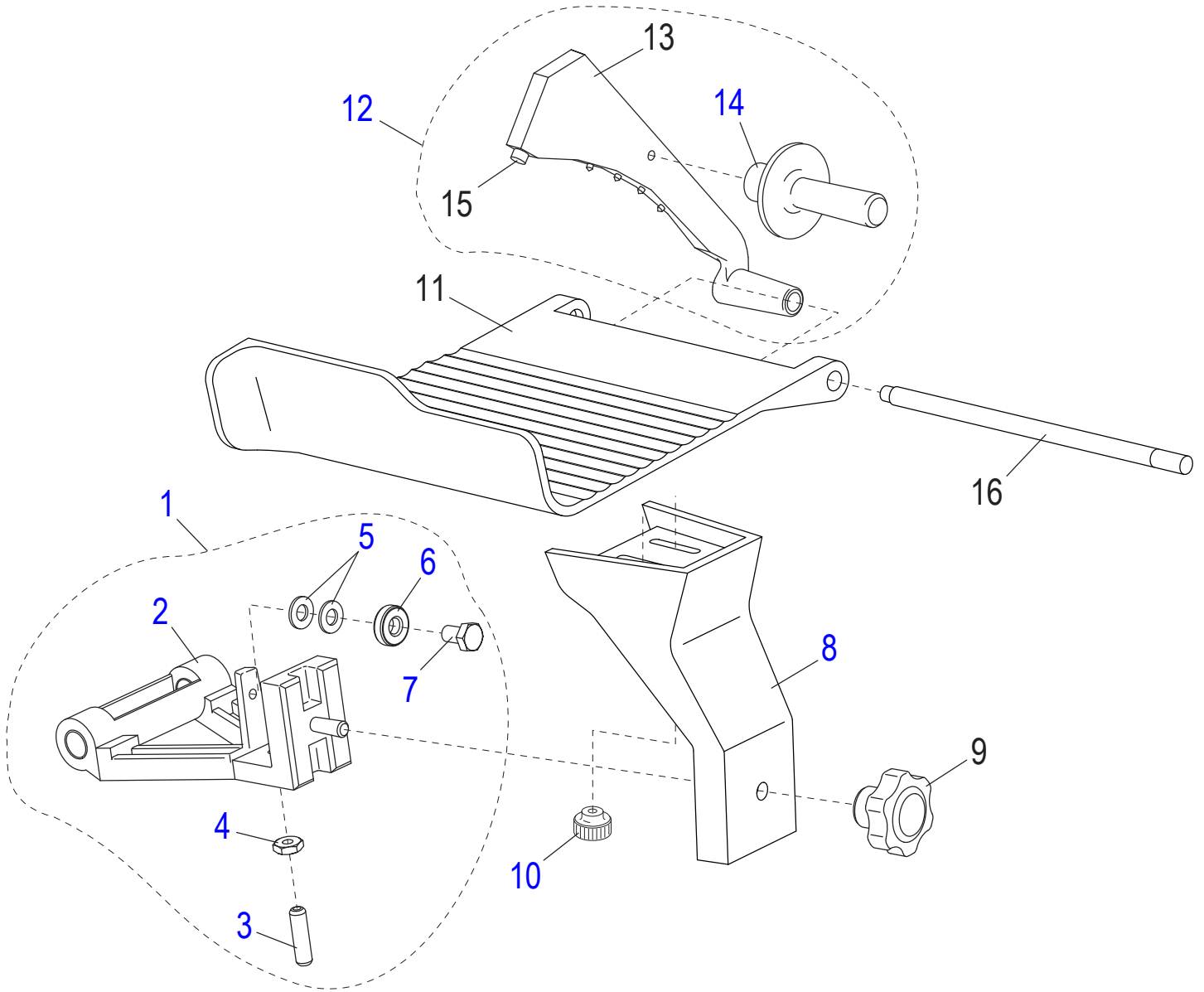
Description	Page
C12 Base Components	4
C12 Chute Components	6
C12 Knife and Sharpener Components	8
C12 Electrical Components	10
C12 Wiring Diagram 115V 50_60Hz, 1PH	12





C12 Base Components

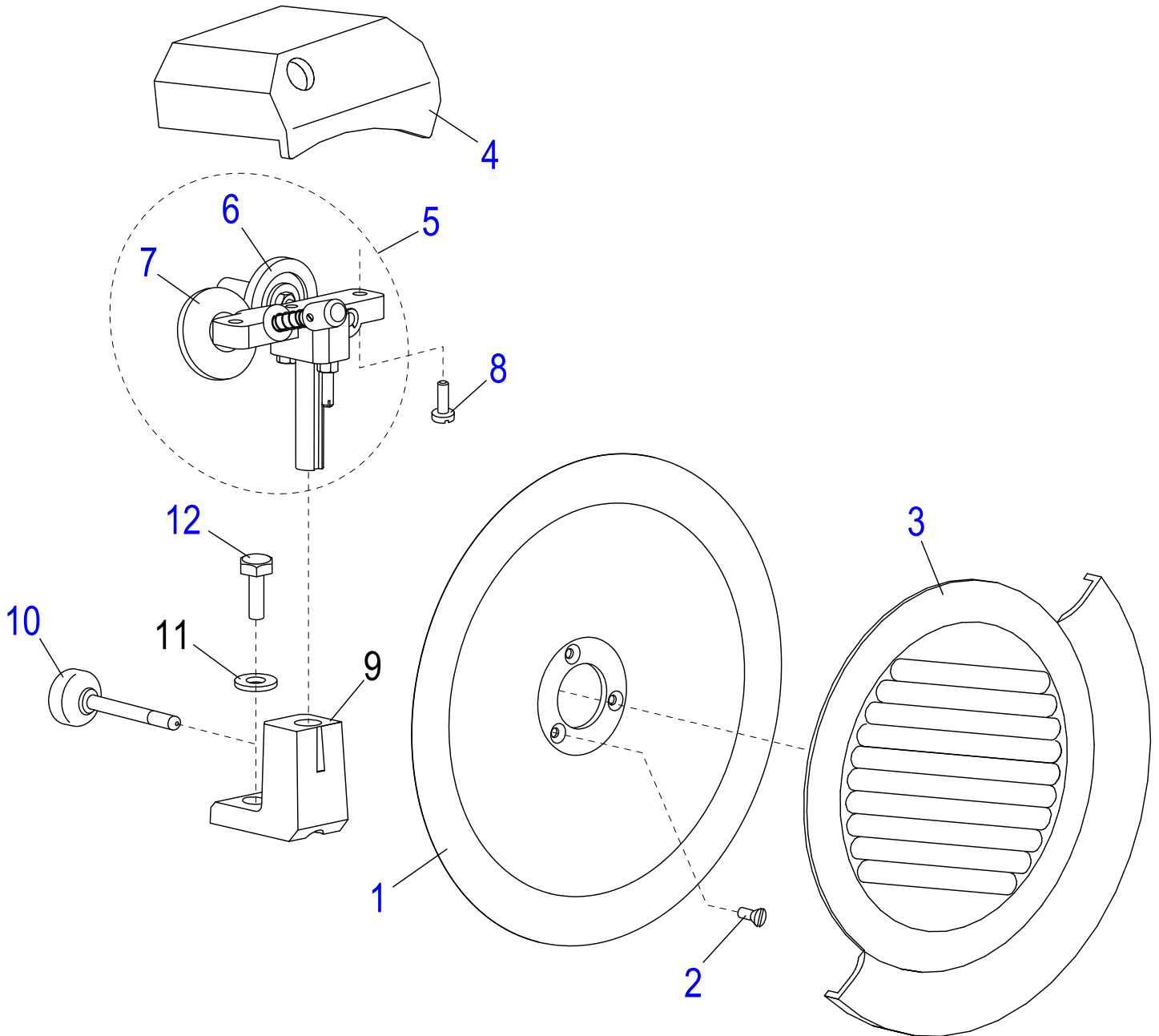
Item	Part Number	Description	Qty	Serial Number
1		Slicer Base	1	
2	M00209	Table Adjustment Knob	1	
2A	M00211	Ferrule	1	
3	M003	Wave Washer	1	
4A	H00181	Set Screw	2	
4	M004	Cam	1	
5	MC009	Table Slide Assembly (Incl. items 6-15)	1	
6	M013	Threaded Rod	1	
7	X08101	Washer M8x16mm Flat	2	
8	H00192	Hex Nut M8-1.25,13mm Width,4 mm Height-Zn	2	
9		Table Slide	1	
10	H00186	Set Screw M8-1.25x10 Cup Pt. Hex Socket - BO	2	
11	H00182	Set Screw M5x10 Flat Pt Slotted - Zn	1	
12	H00189	Cheese Hd Screw M4-0.7x10 Slotted - Zn	1	
13	H00188	Set Screw	1	
14	X30186	Hex Nut M5-0.8 OD-8, TH-4mm, Zinc	1	
15	MCB36	Table Slide Rod	1	
16	X08101	Washer M8x16mm Flat	2	
17	H00116	Hex Head Screw M6-1.0x20 - Zn	2	
18	M016	Table Slide Plate	1	
19	H00061	Hex Head Screw M5x10, Zinc	2	
20	M059	Round Slide Rod	1	
21	M061	Spring	2	
22	M060	Screw	2	
23	M063	Wear Strip	1	
24	M062	Square Slide Bar	1	
25	H00056	Screw	2	
26	MCC12	Knife Hub Assembly (Incl. items 27-31)	1	
27		Retaining Ring, Internal	1	
28	H00195	Retaining Ring, External	1	
29	M020	Bearing (6204 6RS)	2	
30		Knife Pulley Shaft	1	
31		Knife Pulley	1	
32	H00184	Set Screw	1	
33	M00222	Knife Cover Release Knob	1	
34	M00221	Table	1	
35	M00227	Table Support	1	
36	X08101	Washer M8x16mm Flat	2	
37	H00196	Screw	2	
38	M073	Hole Cover	1	
39	M097	Slice Deflector	1	
40	MCC23	Thumb Screw	2	
41	M113	Bottom Cover	1	->307734
41	M01094	Bottom Cover	1	307735 ->
42	H00063	Flat Washer, M5, Zinc	1	
43	X30186	Hex Nut M5-0.8 OD-8, TH-4mm, Zinc	1	
44	M115	Foot	2	
45	M00229	Front Foot	2	
46	M91022	Warning Label	1	
47	M91020	Chefmate Label	1	





C12 Chute Components

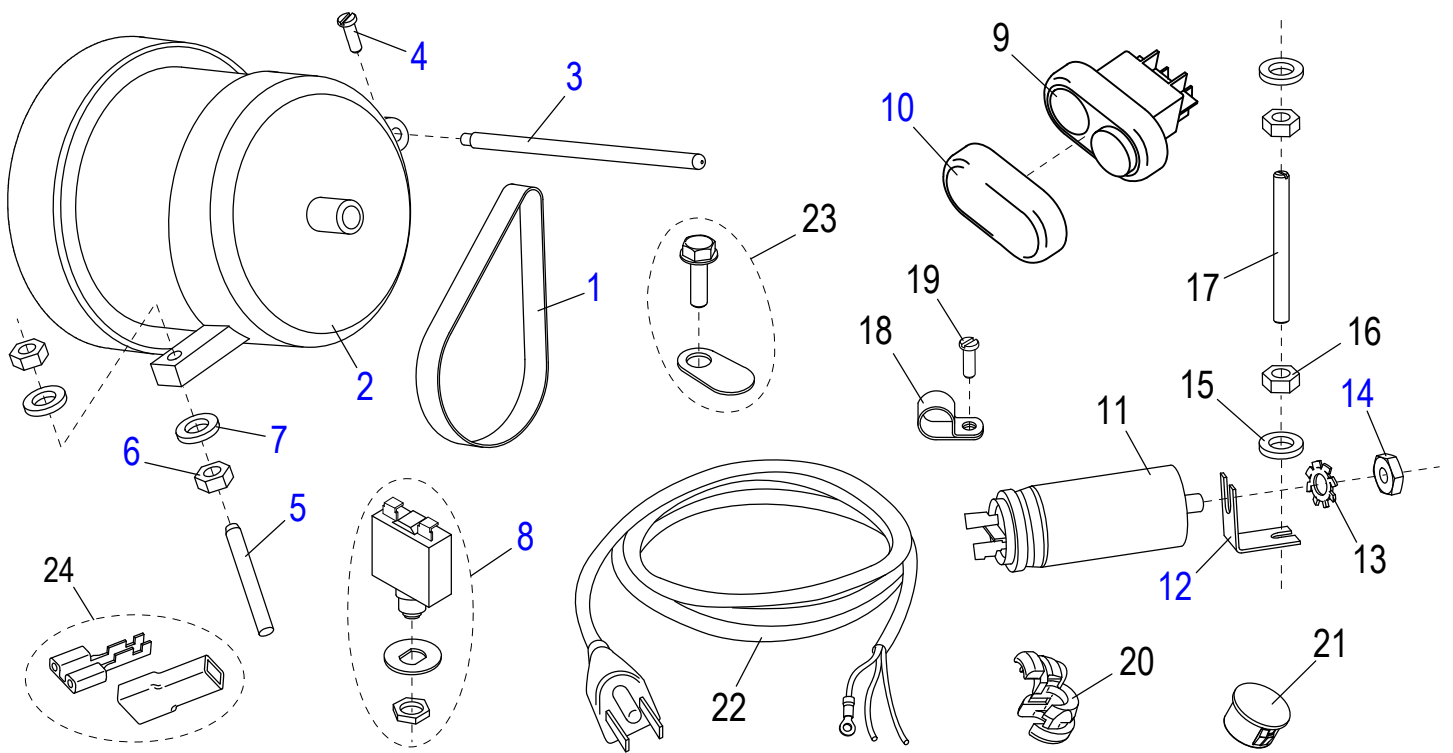
Item	Part Number	Description	Qty	Serial Number
1	M352	Chute Slide Assembly (Incl. items 2-7)	1	
2		Chute Slide	1	
3	M053	Brass Stud	1	
4	H00192	Hex Nut M8-1.25, 13mm Width, 4 mm Height-Zn	1	
5	X08101	Washer M8x16mm Flat	2	
6	M056	Bearing (608 2RS)	1	
7	H00117	Hex Head Screw M8x20 - Zn	1	
8	M00362	Chute Support	1	
9	M00268	Chute Support Knob	1	
10	M00254	Chute Release Knob	1	
11	M00368	Chute	1	
12	M00260	End Weight Assembly (Incl. items 13-15)	1	
13		End Weight	1	
14	M00261	End Weight Handle	1	
15	MC39	Bumper	1	
16	M00270	End Weight Rod	1	





C12 Knife and Sharpener Components

Item	Part Number	Description	Qty	Serial Number
1	M047	Knife	1	
2	H00200	Flat Hd Screw M5x10 Slotted - SS	3	
3	M349	Knife Cover Kit	1	
4	MCB11	Sharpener Cover	1	
5	MCC16	Sharpener Assembly (Incls. items 6-7)	1	
6	M092	Deburring Stone	1	
7	M091	Sharpening Stone	1	
8	H00187	Cheese Hd Screw M5-0.8x16 Slotted - Zn	2	
9	MCC10	Sharpener Support	1	
10	M096	Sharpener Release Knob	1	
11	X08101	Washer M8x16mm Flat	1	
12	H00117	Hex Head Screw M8x20 - Zn	1	





C12 Electrical Components

Item	Part Number	Description	Qty	Serial Number
1	MCC51	Drive Belt	1	
2	MC43/1	Motor (115V/60HZ/3A)	1	
3	M031	Pin	1	
4	H00189	Cheese Hd Screw M4-0.7x10 Slotted - Zn	1	
5	M033	Threaded Rod	1	
6	M034	Hex Nut M6x1.0 OD 10 mm TH 5 mm Zinc	2	
7	M035	Flat Washer ID 6.5 OD 12 TH 1.5 mm Zinc	2	
8	M038	Reset Switch	1	
9	MCR68	Power Switch	1	
10	MCR59	Power Switch Cover	1	
11	M039	Capacitor	1	
12		Capacitor Mounting Bracket	1	
13	H00335	Lock Washer M8, ID-8.4, OD-15, TH-0.8mm Zn	1	
14	H00192	Hex Nut M8-1.25,13mm Width,4 mm Height-Zn	1	
15	H00063	Flat Washer, M5, Zinc	2	
16	X30186	Hex Nut M5-0.8 OD-8, TH-4mm, Zinc	2	
17	M00369	Threaded Rod	1	
18	M03023	Cable Clamp	1	
19	H00061	Hex Head Screw M5x10, Zinc	1	
20	M111	Strain Relief	1	
21	MCC80	Hole Plug	1	
22	MB65/4F	Powercord	1	
23	M00334	Ground Screw	1	
24	M00233	Terminal & Insulator	8	



C12 Wiring Diagram 115V 50_60Hz, 1PH

