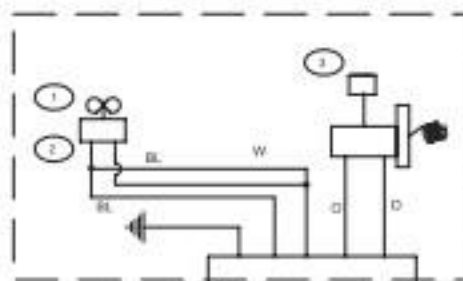


115 VOLT
15 AMP SERVICE
RECOMMENDED

Evaporator Assembly



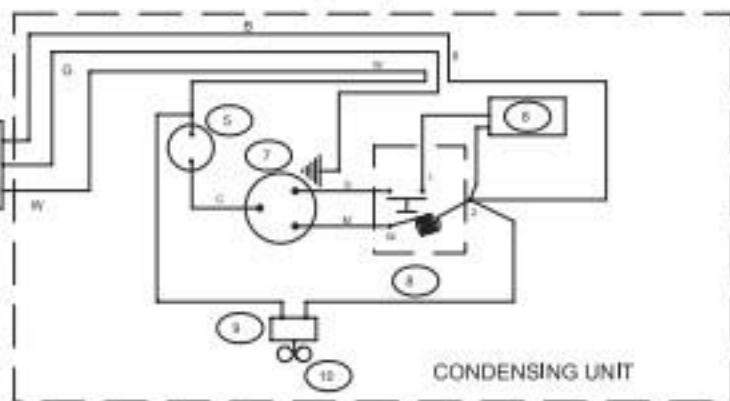
LEGEND

B = Black
BL = Blue
W = White
O = Orange
G = Green

ELECTRICAL RATINGS

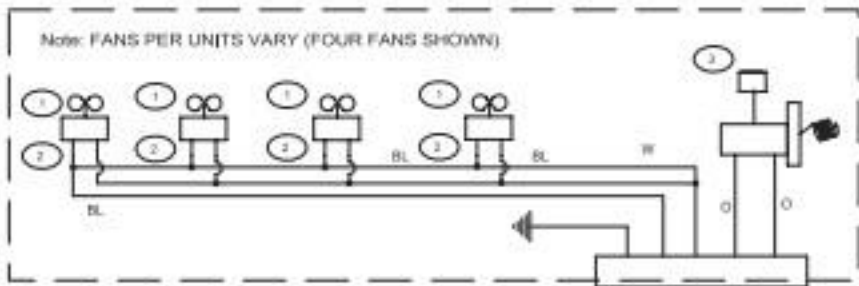
115v. Single Phase, 60 Hz, 3 Wire
All wires are 16 Gauge

Compressor	115V	5.25 AMP
Condenser Fan Motor	115V	.82 AMP
Evaporator Fan Motor	115V	.28 AMP(Each)
Total Amps		6.35



ITEM	DESCRIPTION	PART #
1	EVAPORATOR FAN BLADE	06001395
2	EVAPORATOR FAN MOTOR	06001445
3	THERMOSTAT	06001405
4	DEFROST TIMER	06001397
5	OVERLOAD	06001303
6	CAPACITOR	06001382
7	COMPRESSOR, 1/5 HP, R22	06001444
8	START RELAY	06001415
9	CONDENSER FAN MOTOR	06000336
10	CONDENSER FAN BLADE	07000155

Evaporator Assembly



115 VOLT
15 AMP SERVICE
RECOMMENDED

LEGEND

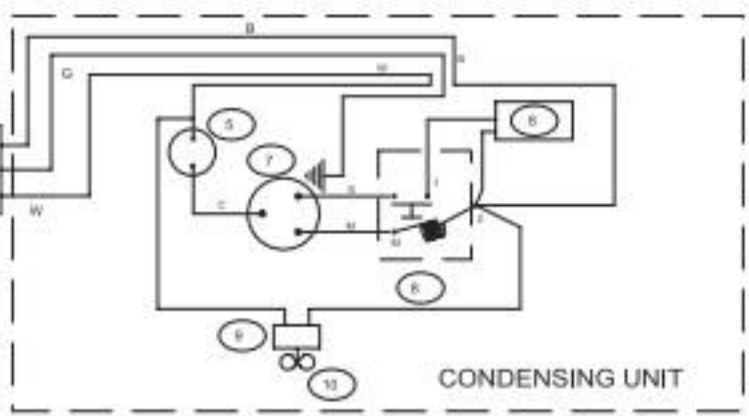
- B = Black
- BL = Blue
- W = White
- O = Orange
- G = Green

DIAGRAM APPLIES TO MODELS:
ST48 (TWO FANS)
ST72 (THREE FANS)
ST96 (FOUR FANS)
ST60 (TWO FANS)

ELECTRICAL RATINGS

115v. Single Phase, 60 Hz, 3 Wire
All wires are 16 Gauge

Compressor	115V	7.05 AMP
Condenser Fan Motor	115V	.80 AMP
Evaporator Fan Motor	115V	.28 AMP(Each)
Total Amps (Model ST96)		9.01



CONDENSING UNIT

ITEM	DESCRIPTION	PART #
1	EVAPORATOR FAN BLADE	06001395
2	EVAPORATOR FAN MOTOR	06001445
3	THERMOSTAT	06001405
4	DEFROST TIMER	06001397
5	OVERLOAD	07000128
6	CAPACITOR	06001380
7	COMPRESSOR, 1/3 HP, R22	06001443
8	START RELAY	07000168
9	CONDENSER FAN MOTOR	08000085
10	CONDENSER FAN BLADE	08000081