



**HEEG 24/36/48/60 SERIES  
BROILER MODELS  
CE Market Version**

**PARTS LIST**

TOLL FREE PHONE, (US & CANADA): 800.427.6668

TOLL FREE FAX, (US & CANADA): 800.361.7745

[HTTP://WWW.GARLAND-GROUP.COM](http://www.garland-group.com)





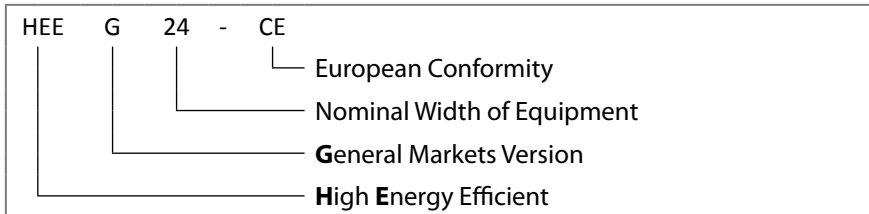
# HEEG 24/36/48/60 SERIES BROILER MODELS CE Market Version

TABLE OF CONTENT	PAGE
Introduction, Model & Serial # Interpretation.....	3
HEEG-24" & 36"CE Top View.....	4
HEEG-24" & 36"CE Top View.....	8
Critical Part List .....	12
Revision History & Bulletins Related .....	13

## Model Code Interpretation

### 1. Heavy duty counter line Open Top Models:

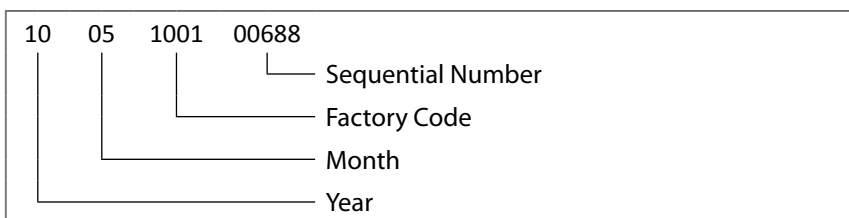
- **HEEG-24CE**
- **HEEG-36CE**
- **HEEG-48CE**
- **HEEG-60CE**

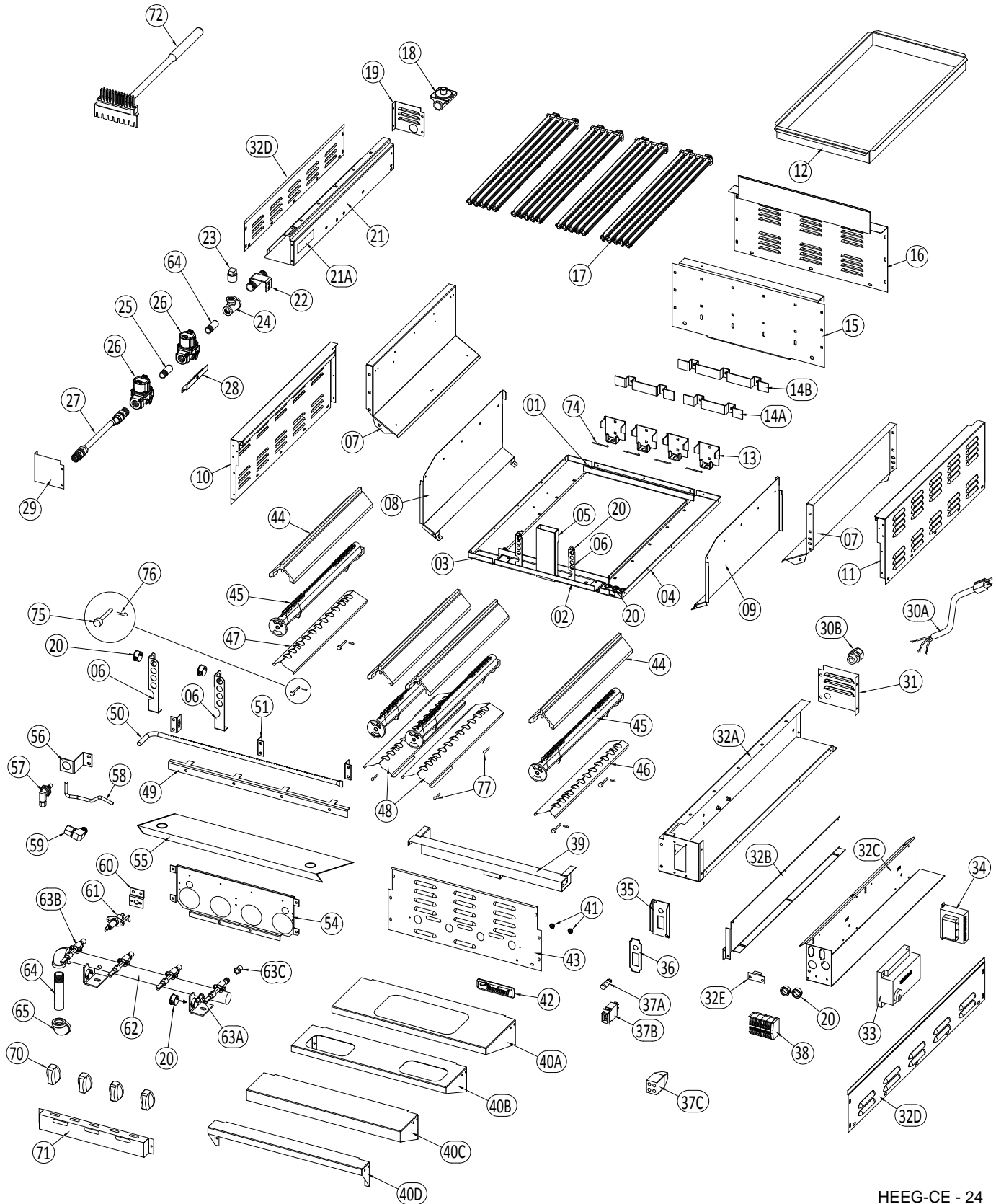


## Serial # Interpretation

From June 2004 to Present

The Serial Number is 13 Digits Long.





**GARLAND PARTS IDENTIFICATION  
HIGH EFFICIENCY BROILER HEEG24CE & HEEG36CE**

ITEM	PART #	DESCRIPTION	QTY		Critical
			24	36	
1	4522445	Frame Brace Rear 24	1		
	4522446	Frame Brace Rear 36		1	
2	4522441	Frame Brace Front 24	1		
	4522442	Frame Brace Front 36		1	
3	4522437	Frame Left	1	1	
4	4522438	Frame Right	1	1	
5	4522483	Grease Chute Assembly	1	1	
6	4526859	Bracket Wire Guide	2	3	
7	4522455	Heat Chamber Side Lt/Rt	2	2	
8	4526709	Side Shield Left	1	1	
9	4526710	Side Shield Right	1	1	
10	4522462-1	Body Side Upper Left	1	1	
11	4522461-1	Body Side Upper Right	1	1	
12	4522622-01	<b>Drip Tray 24 - SS</b>	1		
	4522623 01	<b>Drip Tray 36 - SS</b>		1	
13	4527327	Rear Radiant Support - Tall (CE Models Only)	4	6	
14A	4522486	Grate Support, 2 Grate	2		
14B	4522487	Grate Support, 3 Grate		2	
15	4522453	Heat Chamber Rear 24	1		
	4522454	Heat Chamber Rear 36		1	
16	4522474	Back Panel 24	1		
	4522475	Back Panel 36		1	
17	4522429	Standard Grate (6 Prong)			
	4526206	Reversible Grate (5 Prong)			
<b>MORE GRATE DETAILS ON PAGE 7 - TO DETERMINE GRATE MODEL</b>					
18	2127502	3/4 Regulator Natural Gas - 5" W.C.	1	1	C
	2127500	3/4 Regulator Propane Gas - 10" W.C.	1	1	C
19	4522490-1	Leg Cap Rear Left W/Gas Inlet Hole	1	1	
20	G01487-8	Snap Bushing .875 Dia	14	16	
21	4526886	Leg Left Tall	1	1	
21A	4518493	Rating Plate CE Mark	1	1	
22	4526890-99	Supply Pipe & Bracket Assy C/W #10-24 Threaded Inserts	1	1	
23	1912404	1/2" Npt Allen Head Plug	1	1	
24	4522661	3/4" X 1/2" X 1/2" Reducing Tee	1	1	
25	G01477-3	Pipe Nipple 1/2" X 2" Long	1	1	
26	4526856	Solenoid Valve 120V 60Hz - 1/2" Npt Inlet X 1/2" Npt Outlet	2	2	C
27	4526775	1/2" Id S/S Flex Tube Assy C/W 1/2" Npt Male Adapters (Both Ends)	1	1	
28	4526708	Bracket Solenoid Valve C/W #10-24 Threaded Insert	1	1	
29	4526688	Leg Cap Front Left Solid	1	1	
30A	4526545	Power Cord 6A - Europe	1	1	
	4526545-1	Power Cord 6A - BS1363	1	1	
30B	4526544	Strain Relief - CE Mark	1	1	
31	4526573	Leg Cap - Right Rear Electric	1	1	
32A	4526889	Leg Tall Right	1	1	
32B	4527444	Baffle, Right Leg	1	1	
32C	4526559	Module Tray, Ignition	1	1	
32D	4522456-1	Panel, Lower LH/RH Side	2	2	
32E	4527443	Bracket Ignition Tray to Baffle	1	1	
33	4526552	Ignition Module CE	1	1	C
34	4526551	Transformer	1	1	C
35	4526569	Guard, Switch, Single W/Power Light	1	1	
36	4526862	Overlay CE Single	1	1	

\* NOT ILLUSTRATED  
RECOMMENDED STOCK PARTS

**GARLAND PARTS IDENTIFICATION**  
**HIGH EFFICIENCY BROILER HEEG24CE & HEEG36CE**

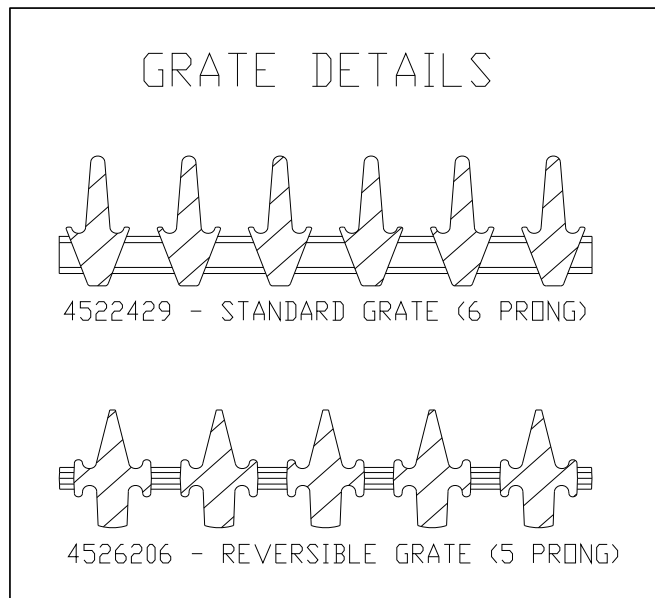
ITEM	PART #	DESCRIPTION	QTY		Critical
			24	36	
37A	4526864	Light, Indicator 24 VAC	1	1	C
37B	4526865	<b>Switch, Power &amp; Breaker W/Green Light - 220VAC</b>	1	1	C
37C	4525593	Wire connector - 4 Wire Push-In			
38	4527143	Terminal Block, Mini - 4L, 8N, 2G	1	1	
39	4522505-1	Grease Trough Assembly 24	1		
	4522506-1	Grease Trough Assembly 36		1	
40A	4522470-1	Front Rail With 1/3 Pan Cutouts 24	1		
	4522471-1	Front Rail With 1/3 Pan Cutouts 36		1	
40B	4526285	Front Rail With 1/9 Pan Cutouts 24	1		
	4526286	Front Rail With 1/9 Pan Cutouts 36		1	
40C	4526301	Front Rail Standard 24	1		
	4526302	Front Rail Standard 36		1	
40D	4526343	Front Rail Stub 24	1		
	4526344	Front Rail Stub 36		1	
41	F95	1/4-20 Pal Nut (For Logo)	2	2	
42	4523154	Garland Logo Small	1	1	
43	4522466-1	Valve Panel 24	1		
	4522467-1	Valve Panel 36		1	
44	4522431	Burner Radiant	4	6	
45	4522477-1	Burner C/W Shutter Assembly - Natural Gas Models	4	6	
	4522477-2	Burner C/W Shutter Assembly - Propane Gas Models	4	6	
46	4522459	Air Baffle Right	1	1	
47	4522458	Air Baffle Left	1	1	
48	4522457	Air Baffle Center	2	4	
49	4527321	Support Bracket - 4 Radiant	1		
	4527323	Support Bracket - 6 Radiant		1	
50	4526554	Lighter Tube 4 - Burner	1		C
	4526556	Lighter Tube 6 - Burner		1	C
51	4526575	Bracket, Lighter Tube	3	3	
54	4527213	Baffle - Front Wall 24"	1		
	4527214	Baffle - Front Wall 36"		1	
55	4528999	Gr. Deflector, 4 Burner Lighter Tube Protector			
	4529001	Gr. Deflector, 6 Burner Lighter Tube Protector			
56	4526579	Bracket, Injector Lighter Tube	1	1	
57	4526957-02	Inject #61, Elbow, 1/4 CC & Wall Mount Nut	1	1	
58	4525331	Flex Tube, 1/4 SS x 6" Long	1	1	
59	076050-80	Elbow Comp - 1/4T x 1/8P #69-4A	1	1	
60	4527461	Bracket - CE Ignition & Sensor	2	2	
61	4522432	Spark Electrode Assembly	1	1	C
61A*	G03757-R	Insulation Spark Electrode (Sold By The Foot - 3" Per Electrode)			C
62	4522507-1	Manifold Assembly (4 Burner Left) Natural Gas	1		
	4522509-1	Manifold Assembly (6 Burner Left) Natural Gas		1	
63A	G02251-1	Pressure Test Spigot	1		
63B	4526393	Valve, High-Low (No Off) EE Broiler	4	6	C
63C	M8-51	Small Orifice #51 Size (for Nat. Gas 0 to 5000 Ft)	4	6	C

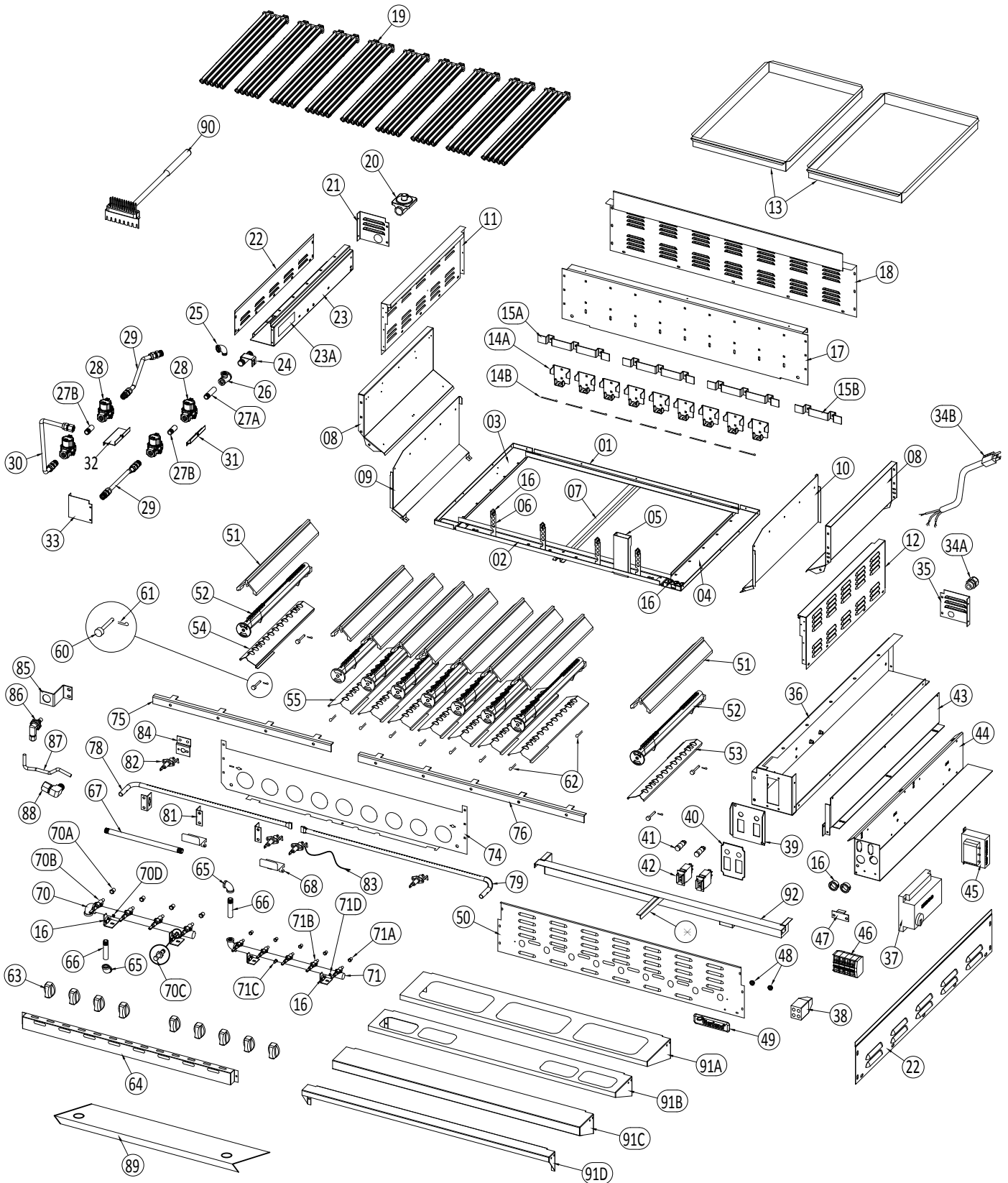
\* NOT ILLUSTRATED  
**RECOMMENDED STOCK PARTS**

**GARLAND PARTS IDENTIFICATION  
HIGH EFFICIENCY BROILER HEEG24CE & HEEG36CE**

ITEM	PART #	DESCRIPTION	QTY		Critical
			24	36	
64	<a href="#">G01896-2</a>	Pipe Nipple 1/2" X 3.5" Long	1	1	
65	<a href="#">G01474-2</a>	Elbow - 1/2 NPT	1	1	
70	<a href="#">4522585</a>	Knob - Valve Control	4	6	
71	4522494-1	Valve Cover 24 (Only When There Are No Knobs)	1		
	<a href="#">4522495-1</a>	Valve Cover 36 (Only When There Are No Knobs)		1	
72	<a href="#">4524388</a>	<b>EE Cleaning Utensil - Standard Rack</b>	1	1	
	<a href="#">4527200</a>	<b>EE Cleaning Utensil - Reversible Rack</b>	1	1	
73*	4524613	Insulation (Sold By Square Foot - Measure & Order By Size Needed)	3.3FT	3.9FT	
74	8020602	Cotter Pin 7/64 Dia X 3" Long (Secure Burner To Rear Support)	4	6	
75	<a href="#">8020701</a>	"Clevis Pin 1-1/2"" Long x 1/4"" diameter. (to Secure Baffles To Burners.) Location: On the Outer LT & RT Burners. (Also used P/N <a href="#">F154</a> Cotter Pin to Secure Clevis Pin)"	4	4	
76	<a href="#">F154</a>	"Cotter Pin 3/32"" Dia x 1"" Long Location: On the Outer Burners (Secure Clevis Pin <a href="#">8020701</a> )"	4	4	
77	<a href="#">8020601</a>	Cotter Pin 7/16 x 1-1/2" (2 pins per Middle Burner)	4	8	
78*	8003608	Carriage Bolt Ss (1/4-20 X 3/4" Long)	47	51	
79*	8000203	Lock Washer 1/4 X 3/4 X 5/64 Thick	73	81	
80*	<a href="#">8001206</a>	Hex Nut (1/4-20)	73	81	
81*	4529075	Wire Package HEEEG24CE	1	1	C
82*	4529076	Wire Package HEEEG36CE	1	1	C
83*	<a href="#">4529079</a>	Resistor 47kOhm, 2W 5% (Yellow, Purple, Orange, Gold)	1	1	C
<b>Wiring Diagram</b>					
83*	4526944	Wiring Diagram HEE(E/G)-CE, 1 Ignition Module	1		

\* NOT ILLUSTRATED  
**RECOMMENDED STOCK PARTS**





**GARLAND PARTS IDENTIFICATION**  
**HIGH EFFICIENCY BROILER HEEG48CE & HEEG60CE**

ITEM	PART #	DESCRIPTION	QTY		Critical
			48	60	
1	4522443	Frame Brace Rear 48	1		
	4522444	Frame Brace Rear 60		1	
2	4522439	Frame Brace Front 48	1		
	4522440	Frame Brace Front 60		1	
3	4522437	Frame Left	1	1	
4	4522438	Frame Right	1	1	
5	4522483	Grease Chute Assembly	1	1	
6	4526859	High Voltage Wire Bracket	4	5	
7	4522463	Center Guide Drip Tray	1	1	
8	4522455	Heat Chamber Side Lt/Rt	2	2	
9	4526709	Side Shield Left	1	1	
10	4526710	Side Shield Right	1	1	
11	4522462-1	Body Side Upper Left	1	1	
12	4522461-1	Body Side Upper Right	1	1	
13	<b>4522624-01</b>	<b>Drip Tray 48</b>	2		
	<b>4522625-01</b>	<b>Drip Tray 60</b>		2	
14A	4527327	Rear Radiant Support - Tall (CE Models Only)	9	11	
14B	8020602	Cotter Pin 7/64 Dia X 3" Long (Secure Burner To Rear Support)	9	11	
15A	4522487	Rear Grate Support Long - 3 Grate	3	3	
15B	4522486	Rear Grate Support Short - 2 Grate		1	
16	G01487-8	Snap Bushing .875 Dia	11	12	
17	4522451	Heat Chamber Rear 48	1		
	4522452	Heat Chamber Rear 60		1	
18	4522472	Back Panel 48	1		
	4522473	Back Panel 60		1	
19	4522429	Standard Grate (6 Prong)	9	11	
	4526206	Reversible Grate (5 Prong)			
	<b>MORE GRATE DETAILS ON PAGE # 7 TO DETERMINE WHICH GRATES YOU HAVE</b>				
20A	2127502	3/4 Regulator Natural Gas - 5" W.C.	1	1	C
20B	2127500	3/4 Regulator Propane Gas - 10" W.C.	1	1	C
21	4522490-1	Leg Cap Rear Left W/Gas Inlet Hole	1	1	
22	4522456-1	Panel, Lower LH/RH Side	2	2	
23	4526886	Leg Left Tall	1	1	
23A	4518493	Rating Plate CE Mark	1	1	
24	4526890-99	Supply Pipe & Bracket Assy C/W #10-24 Threaded Inserts	1	1	
25	G01475-1	1/2" Npt Street Elbow	1	1	
26	4522661	3/4" X 1/2" X 1/2" Reducing Tee	1	1	
27A	G01896-2	Pipe Nipple 1/2" X 3.5" Long	3	3	
27B	G01477-3	Pipe Nipple 1/2" X 2" Long	2	2	
28	4526856	Solenoid Valve 120V 60Hz - 1/2" Npt Inlet X 1/2" Npt Outlet	4	4	C
29	4526775	1/2" Id S/S Flex Tube Assy C/W 1/2" Npt Male Adapters (Both Ends)	2	2	
30	4526860	1/2" Id S/S Flex Tube Assy C/W 1/2" Npt Male & Female Adapters	1	1	
31	4526708	Bracket Solenoid Valve C/W #10-24 Threaded Insert	1	1	
32	4526708-1	Bracket Solenoid Valve (Dual Train) C/W #10-24 Threaded Insert	1	1	
33	4526688	Leg Cap Front Left Solid	1	1	
34A	4526544	Strain Relief - CE Mark	1	1	
34B	4523399	Power Supply Cord (8Ft Long)	1	1	
35	4526573	Leg Cap - Right Rear Electric	1	1	
36	4526889	Leg Right Tall	1	1	
37	4526552	Ignition Module CE	2	2	C
38	4525593	Wire connector - 4 Wire Push-In	1	1	

\* NOT ILLUSTRATED  
**RECOMMENDED STOCK PARTS**

**GARLAND PARTS IDENTIFICATION**  
**HIGH EFFICIENCY BROILER HEEG48CE & HEEG60CE**

ITEM	PART #	DESCRIPTION	QTY		Critical
			48	60	
39	4526568	Guard, Double Switch w/Power Light	1	1	
40	4526863	Overlay, CE Double Switch	1	1	
41	4526864	Light, Indicator 24 VAC	1	1	C
42	4526865	<b>Switch, Power &amp; Breaker W/Green Light - 220VAC</b>	1	1	C
43	4527444	Baffle, Right Leg	1	1	
44	4526559	Module Tray, Ignition	1	1	
45	4526551	Transformer	1	1	C
46	4527143	Terminal Block, Mini - 4L, 8N, 2G	1	1	
47	4527443	Bracket Ignition Tray to Baffle	1	1	
48	F95	1/4-20 Pal Nut (For Logo)	2	2	
49	4523154	Garland Logo Small	1	1	
50	4522464-1	Valve Panel 48	1		
	4522465-1	Valve Panel 60		1	
51	4522431	Burner Radiant	9	11	
52A	4522477-1	Burner C/W Shutter Assembly - Natural Gas Models	9	11	
52B	4522477-2	Burner C/W Shutter Assembly - Propane Gas Models	9	11	
53	4522459	Air Baffle Right	1	1	
54	4522458	Air Baffle Left	1	1	
55	4522457	Air Baffle Center	7	9	
60	8020701	"Clevis Pin 1-1/2"" Long x 1/4"" diameter. (to Secure Baffles To Burners.) Location: On the Outer LT & RT Burners. (Also used P/N F154 Cotter Pin to Secure Clevis Pin)"	4	4	
61	F154	"Cotter Pin 3/32"" Dia x 1"" Long Location: On the Outer Burners (Secure Clevis Pin 8020701)"	4	4	
62	8020601	Cotter Pin 7/16 x 1-1/2" (2 pins per Middle Burner)	4	8	
63	4522585	Knob - Valve Control	9	11	
64	4522492-1	Valve Cover 48 (Only When There Are No Knobs)	1		
	4522493-1	Valve Cover 60 (Only When There Are No Knobs)		1	
65	G01474-2	Elbow - 1/2 NPT	2	2	
66	G01896-2	Pipe Nipple 1/2" X 3.5" Long	1	1	
67	G01477-17	1/2" Pipe X 14.25" Long (Npt Both Ends) 48	1		
	G01477-16	1/2" Pipe X 24.5" Long (Npt Both Ends) 60		1	
68	4526722	Bracket Pipe Support	2	2	
<b>LEFT SIDE GAS TRAIN DETAILS</b>					
70	4522507-1	Manifold Assembly 4 Burner C/W Valves - Natural Gas	1		
	4522509-1	Manifold Assembly 6 Burner C/W Valves - Natural Gas		1	
	4522507-3	Manifold Assembly 4 Burner C/W Valves - Propane Gas	1		
	4522509-3	Manifold Assembly 6 Burner C/W Valves - Propane Gas		1	
70A	M8-51	Small Orifice Size #51 - Natural Gas	4	6	C
	M8-59	Small Orifice Size #59 - Propane Gas	4	6	C
70B	4526393	Valve High - Low - On Off	4	6	C
70C	G02251-1	Pressure Test Spigot	1	1	
70D	2203400	1/8" Npt Plug	1	1	
<b>RIGHT SIDE GAS TRAIN DETAILS</b>					
71	4522821-1	Manifold Assembly 5 Burner C/W Valves - Natural Gas	1	1	
	4522821-3	Manifold Assembly 5 Burner C/W Valves - Propane Gas	1	1	
71A	M8-51	Small Orifice Size #51 - Natural Gas	4	6	C
	M8-59	Small Orifice Size #59 - Propane Gas	4	6	C
71B	4526393	Valve High - Low - On Off	4	6	C
71C	G02251-1	Pressure Test Spigot	1	1	
71D	2203400	1/8" Npt Plug	1	1	

\* **NOT ILLUSTRATED**  
**RECOMMENDED STOCK PARTS**

**GARLAND PARTS IDENTIFICATION**  
**HIGH EFFICIENCY BROILER HEEG48CE & HEEG60CE**

ITEM	PART #	DESCRIPTION	QTY		Critical
			48	60	
74	4527215	Baffle - Front Wall 42"	1		
	4527216	Baffle - Front Wall 60"		1	
75	4527321	Support Bracket - 4 Radiant	1		
76	4527322	Support Bracket - 5 Radiant	1	1	
77*	4527322	Support Bracket - 6 Radiant		1	
78	4526554	Lighter Tube 4 - Burner	1		C
79	4526555	Lighter Tube 5 - Burner	1	1	C
80*	4526556	Lighter Tube 6 - Burner		1	C
81	4526575	Bracket, Lighter Tube	3	3	
82	4522432	Spark Electrode Assembly	9	11	C
83	G03757-R	Insulation Spark Electrode (Sold By The Foot - 3" Per Electrode)	X	X	
84	4527461	Bracket - CE Ignition & Sensor	2	2	
85	4526579	Bracket, Injector Lighter Tube	1	1	
86	4526957-02	Inject #61, Elbow, 1/4 CC & Wall Mount Nut	1	1	C
87	4525331	Flex Tube, 1/4 SS x 6" Long	1	1	
88	076050-80	Elbow Comp - 1/4T x 1/8P #69-4A	1	1	
89	4528999	Gr. Deflector, 4 Burner Lighter Tube Protector	1		
	4529000	Gr. Deflector, 5 Burner Lighter Tube Protector	1	1	
	4529001	Gr. Deflector, 6 Burner Lighter Tube Protector		1	
90	4524388	<b>EE Cleaning Utensil - Standard Rack</b>	1	1	
	4527200	<b>EE Cleaning Utensil - Reversible Rack</b>	1	1	
<b>"FRONT RAIL OPTIONS ARE LISTED BELOW WITH CORRESPONDING GREASE TROUGH ASSEMBLY BY UNIT SIZE - FOR HEEG48"</b>					
91A	4522468-1	Front Rail With 1/3 Pan Cutouts 48	1		
92	4522503-1	Grease Trough Assembly (No Support) 48	1		
91B	4526287	Front Rail With 1/9 Pan Cutouts 48	1		
92	4522503-1	Grease Trough Assembly (No Support) 48	1		
91C	4526303	Front Rail Standard 48	1		
92	4522503-1	Grease Trough Assembly (No Support) 48	1		
91D	4526345	Front Rail Stub 48	1		
92	4522503-1	Grease Trough Assembly (No Support) 48	1		
<b>"FRONT RAIL OPTIONS ARE LISTED BELOW WITH CORRESPONDING GREASE TROUGH ASSEMBLY BY UNIT SIZE - FOR HEEG60"</b>					
91A	4522469-1	Front Rail With 1/3 Pan Cutouts 60		1	
92A*	4522504-1	Grease Trough Assembly 60 W/Long Support		1	
91B	4526288	Front Rail With 1/9 Pan Cutouts 60		1	
92B*	4522504-2	Grease Trough Assembly 60 W/Short Support		1	
91C	4526304	Front Rail Standard 60		1	
92B*	4522504-2	Grease Trough Assembly 60 W/Short Support		1	
91D	4526346	Front Rail Stub 60		1	
92	4522504-3	Grease Trough Assembly (No Support) 60		1	
<b>"ASTERISK * ON EXPLODED DRAWING INDICATES THE SUPPORT THAT IS EITHER LONG (AS SHOWN), SHORT OR OMITTED"</b>					

\* NOT ILLUSTRATED  
**RECOMMENDED STOCK PARTS**

**GARLAND PARTS IDENTIFICATION**  
**HIGH EFFICIENCY BROILER HEEG48CE & HEEG60CE**

ITEM	PART #	DESCRIPTION	QTY		Critical
			48	60	
95*	4524613	Insulation (Sold By Square Foot - Measure & Order By Size Needed)	3.3FT	3.9FT	
96*	8003608	Carriage Bolt Ss (1/4-20 X 3/4" Long)	55	59	
97*	8000203	Lock Washer 1/4 X 3/4 X 5/64 Thick	89	97	
98*	<a href="#">8001206</a>	Hex Nut (1/4-20)	89	97	
99*	4529077	Wire Package HEEG48CE	1		C
100*	4529078	Wire Package HEEG60CE		1	C
<b>Wiring Diagrams &amp; Manuals</b>					
	4526945	Wiring Diagram HEE(E/G)-CE, 2 Ignition Module			

\* **NOT ILLUSTRATED**  
**RECOMMENDED STOCK PARTS**

Required Stock, Critical Part List. GT & UT Series

PART #	DESCRIPTION	Critical
<a href="#">2127502</a>	3/4 Regulator Natural Gas - 5" W.C.	C
<a href="#">2127500</a>	3/4 Regulator Propane Gas - 10" W.C.	C
<a href="#">4526856</a>	Solenoid Valve 120V 60Hz - 1/2" Npt Inlet X 1/2" Npt Outlet	C
<a href="#">4526552</a>	Ignition Module CE	C
<a href="#">4526551</a>	Transformer	C
<a href="#">4526864</a>	Light, Indicator 24 VAC	C
<a href="#">4526865</a>	<b>Switch, Power &amp; Breaker W/Green Light - 220VAC</b>	C
<a href="#">4526554</a>	Lighter Tube 4 - Burner	C
<a href="#">4526556</a>	Lighter Tube 6 - Burner	C
<a href="#">4522432</a>	Spark Electrode Assembly	C
<a href="#">G03757-R</a>	Insulation Spark Electrode (Sold By The Foot - 3" Per Electrode)	C
<a href="#">4526393</a>	Valve, High-Low (No Off) EE Broiler	C
<a href="#">M8-51</a>	Small Orifice #51 Size (for Nat. Gas 0 to 5000 Ft)	C
4529075	Wire Package HEEEG24CE	C
4529076	Wire Package HEEEG36CE	C
<a href="#">4529079</a>	Resistor 47kOhm, 2W 5% (Yellow, Purple, Orange, Gold)	C
<a href="#">M8-59</a>	Small Orifice Size #59 - Propane Gas	C
<a href="#">4526555</a>	Lighter Tube 5 - Burner	C
<a href="#">4526957-02</a>	Inject #61, Elbow, 1/4 CC & Wall Mount Nut	C
4529077	Wire Package HEEG48CE	C
4529078	Wire Package HEEG60CE	C

# GARLAND PARTS IDENTIFICATION

## Revision History

REV. #	PAGE #	ITEM #	NOTE	DATE
0			Part List Released - HEEG 24/36/48/60 CE SERIES BROILER MODELS	5-Oct-10

BULLETINS RELATED		
Bulletin Number	Subject	Date



 **Garland**<sup>®</sup>