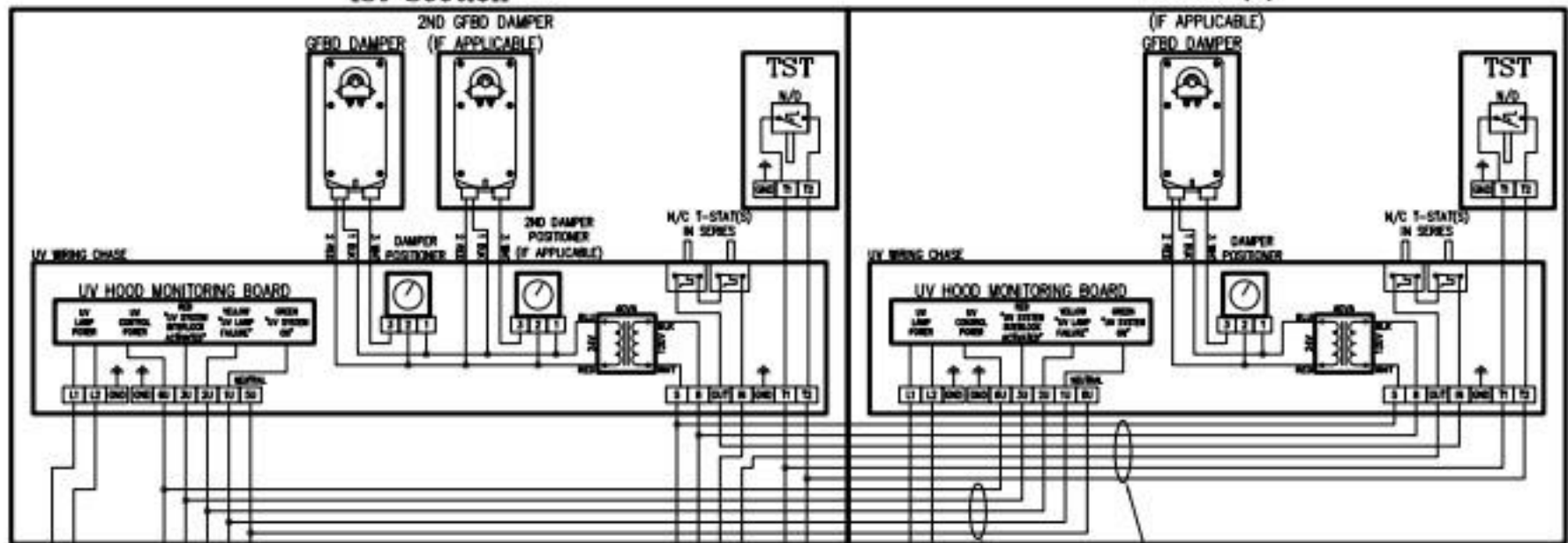
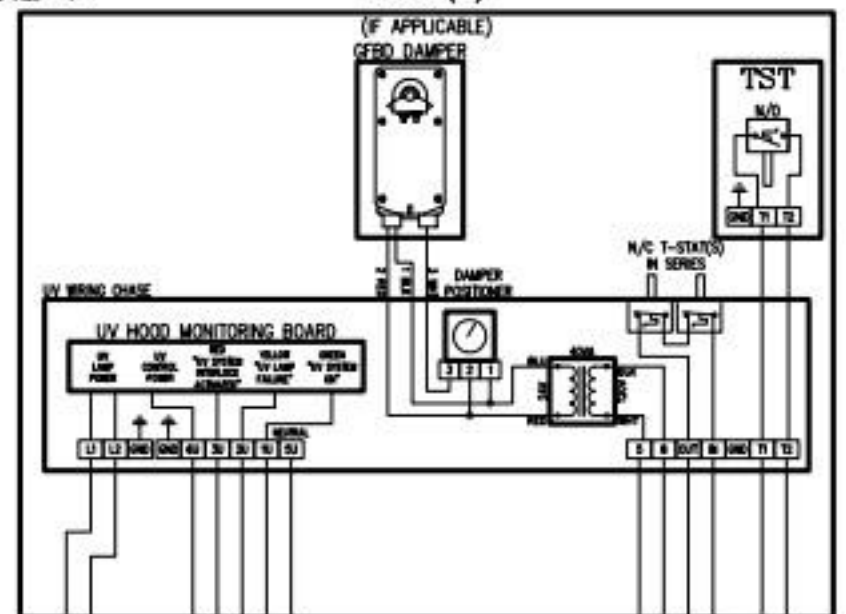


1st Hood
1st Section

Add'l
Section(s)



Add'l
Hood(s)



UV LAMP CIRCUIT:
120VAC, 60HZ, 20 AMP
EACH SECTION
REQUIRES A
SEPARATE 20 AMP
CIRCUIT

REFER TO
CUV-1000
WIRING
DIAGRAM
FOR DETAILS

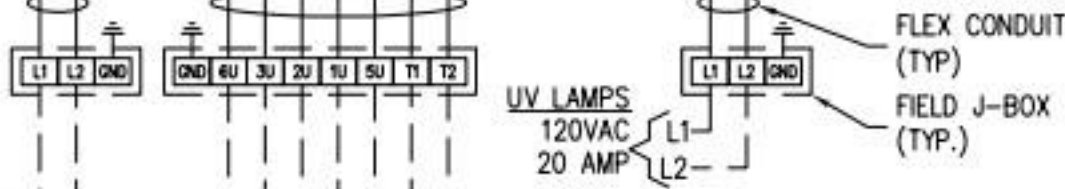
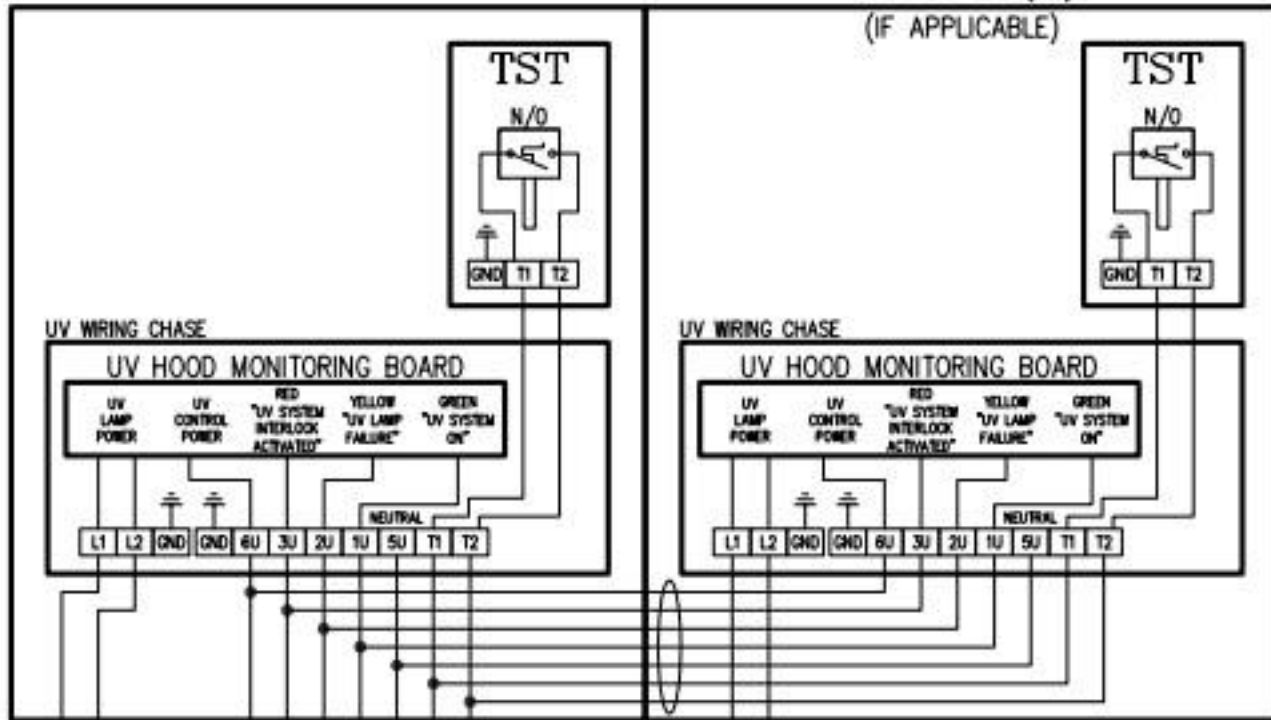


UV LAMPS
120VAC
20 AMP

FLEX CONDUIT
(TYP.)
FIELD J-BOX
(TYP.)

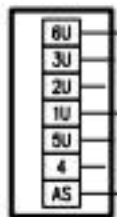
1st Hood
1st Section

Add'l
Section(s)
(IF APPLICABLE)

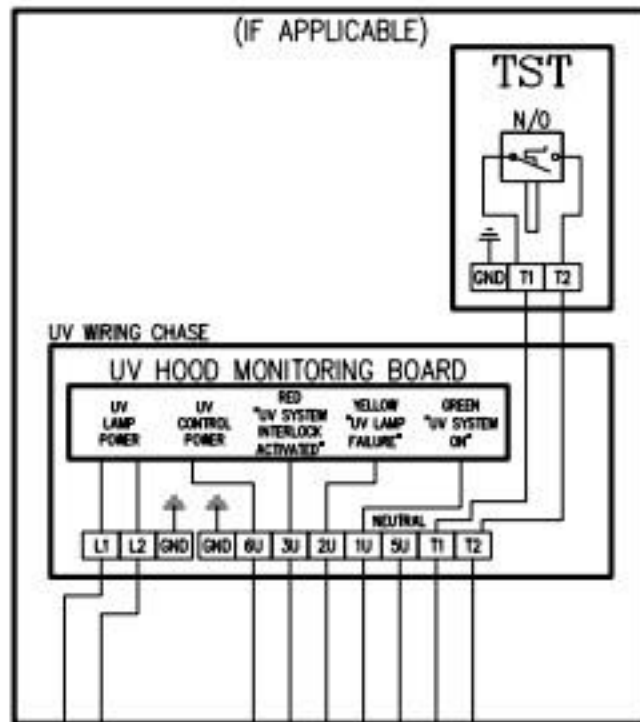


UV LAMP CIRCUIT:
120VAC, 60HZ, 20 AMP
EACH SECTION
REQUIRES A
SEPARATE 20 AMP
CIRCUIT

REFER TO
CUV-1000
WIRING
DIAGRAM
FOR DETAILS

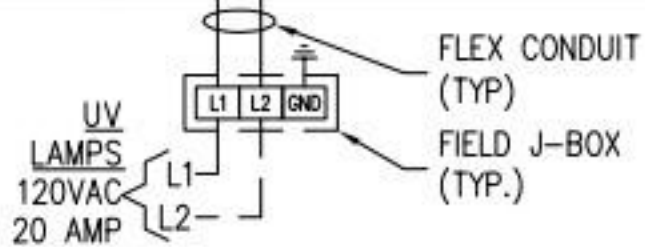
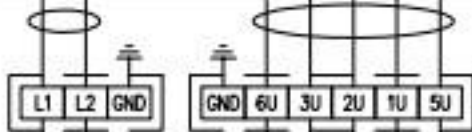
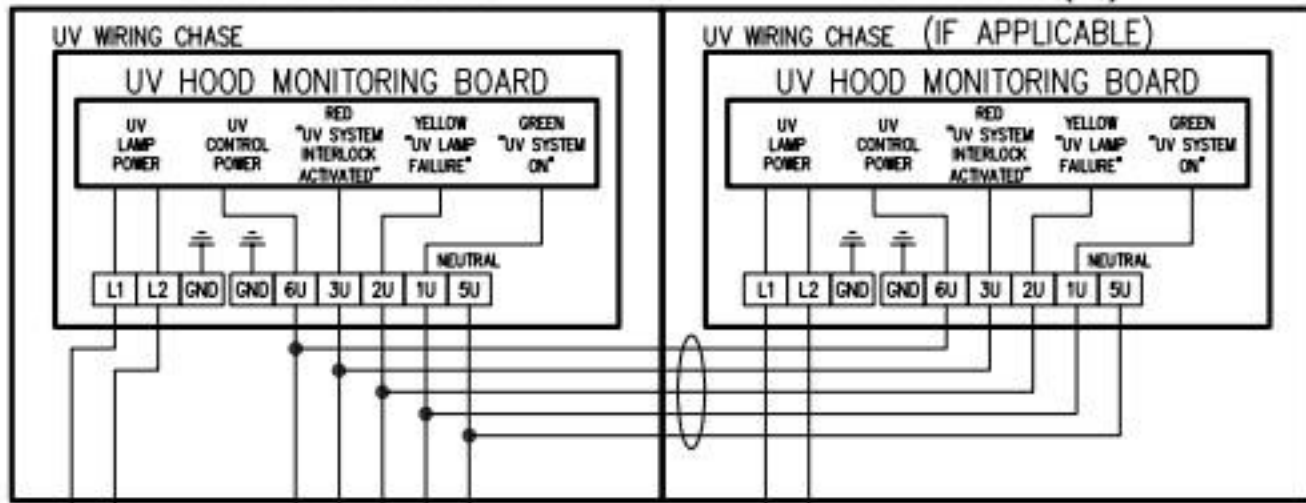


Add'l
Hood(s)
(IF APPLICABLE)



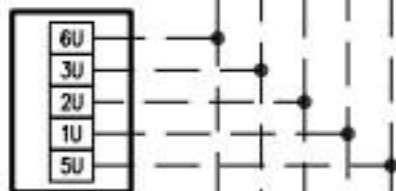
1st Hood 1st Section

Add'l Section(s)

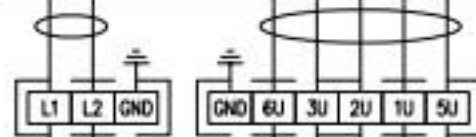
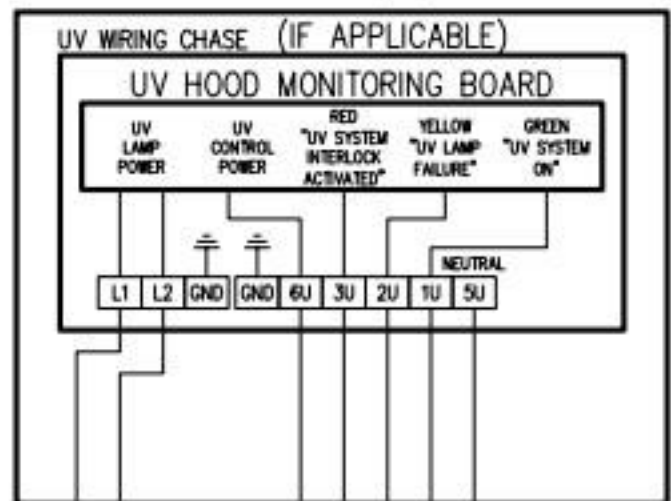


UV LAMP CIRCUIT:
120VAC, 60HZ, 20 AMP
EACH SECTION
REQUIRES A
SEPARATE 20 AMP
CIRCUIT

REFER TO
CUV-1000
WIRING
DIAGRAM
FOR DETAILS



Add'l Hood(s)



UV LAMPS
120VAC
20 AMP

CUV-1000

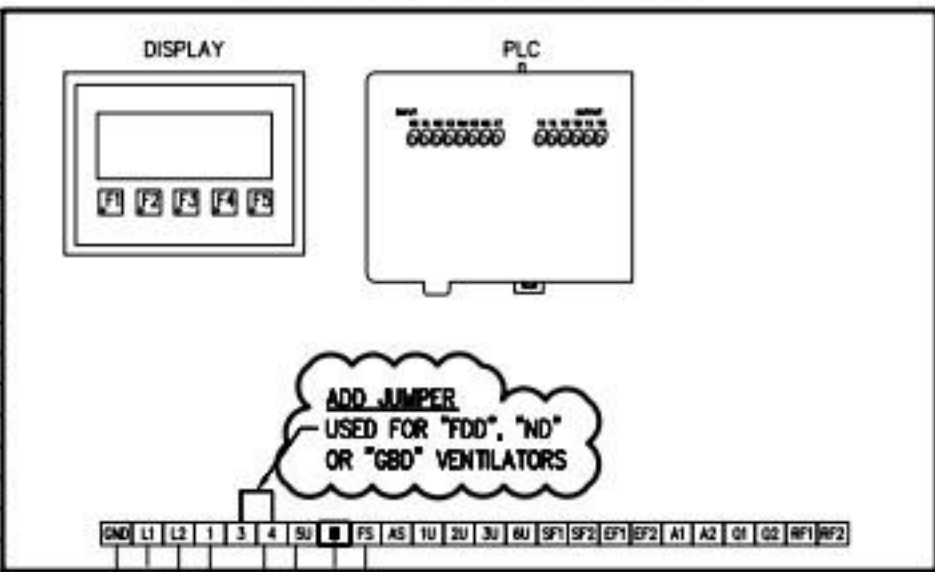
GAYLORD UV CONTROL

--- SUPPLY VOLTAGE ---

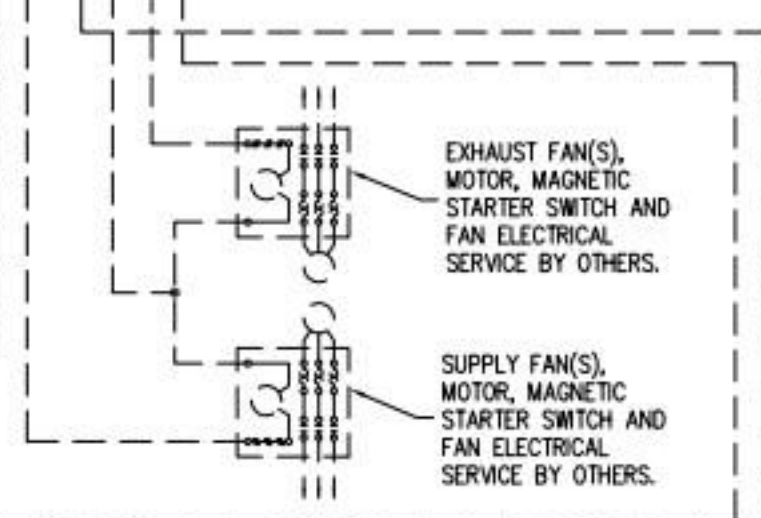
120 VAC, 60 Hz.

13 AMPS MAXIMUM - CONNECTED LOAD

TRM	TERMINATION SCHEDULE	TYPE	RATING
L1	MAIN POWER CONNECTION : HOT	120VAC	
L2	MAIN POWER CONNECTION : NEUTRAL	0 V	
1	OUTPUT - SUPPLY FAN STARTER	120VAC	2 AMP
3	INPUT - THERMOSTAT RETURN (N.C. STATS)	120VAC	
4	FUSED SUPPLY TO FIRE SWITCH, ETC.	120VAC	
5U	120VAC NEUTRAL LEG	0 V	
8	OUTPUT - EXHAUST FAN STARTER	120VAC	2 AMP
FS	INPUT - REMOTE FIRE SWITCH (N.O. SW.)	120VAC	
AS	INPUT - AUTOSTART THERMOSTAT(S)	120VAC	
1U	INPUT - "UV SYSTEM ON"	120VAC	
2U	INPUT - "UV LAMP FAILURE"	120VAC	
3U	INPUT - "UV SAFETY INTERLOCK ACTIVE"	120VAC	
6U	OUTPUT - UV CONTROL POWER	120VAC	
SF1	N.O. DRY CONTACTS FOR SUPPLY FAN	N/A	7.5 AMP
SF2	REMOTE CONTROL	N/A	7.5 AMP
EF1	N.O. DRY CONTACTS FOR EXHAUST FAN	N/A	7.5 AMP
EF2	REMOTE CONTROL	N/A	7.5 AMP
A1	N.O. DRY CONTACTS FOR INTERFACE TO BUILDING FIRE ALARM / MONITOR SYSTEM	N/A	7.5 AMP
A2	N.C. DRY CONTACTS FOR INTERFACE TO BUILDING FIRE ALARM / MONITOR SYSTEM	N/A	7.5 AMP
Q1	N.O. DRY CONTACTS FOR INTERFACE TO BUILDING FIRE ALARM / MONITOR SYSTEM	N/A	7.5 AMP
Q2	N.C. DRY CONTACTS FOR INTERFACE TO BUILDING FIRE ALARM / MONITOR SYSTEM	N/A	7.5 AMP
RF1	REMOTE ON/OFF SWITCH TERMINALS	120VAC	7.5 AMP
RF2	WIRED TO N.O. SWITCH	N/A	7.5 AMP



MAIN ELECTRICAL SERVICE FOR CUV-1000, MUST BE FUSED SEPARATELY.



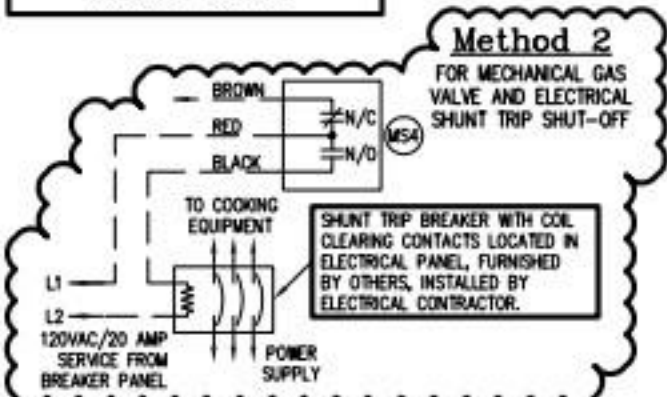
WIRING NOTES

- E-1) ALL EXTERNAL CONTROL WIRING SHALL BE 12 GAUGE MINIMUM OR AS PER APPLICABLE CODES.
- E-2) THE HOLDING COILS WITHIN THE MAGNETIC STARTERS MUST MATCH THE SUPPLY VOLTAGE. MAGNETIC STARTERS ARE SUPPLIED BY OTHERS.
- E-3) VENTILATOR FAN CIRCUIT: THIS IS A SERIES CIRCUIT. CONNECT HOT FROM FAN SWITCH TO FIRST HOOD "IN". CONTINUE CONNECTING EACH HOOD "OUT" TO THE NEXT HOOD "IN", UNTIL LAST HOOD IS REACHED. CONNECT LAST HOOD "OUT" TO FAN MAGNETIC STARTER(S)

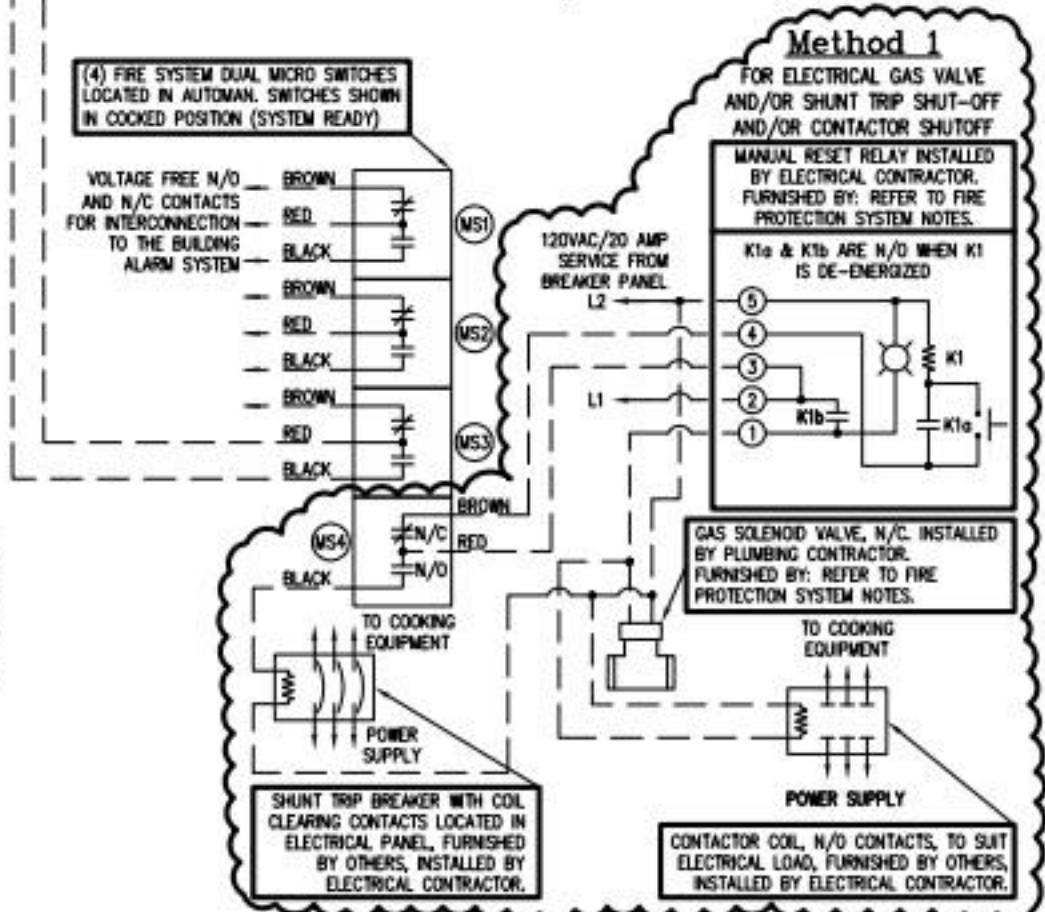
GAYLORD AUTOSTART THERMOSTAT "TST" NOTES

- A) INSTALLED IN HOOD
- B) PRESET TO 90°F AT FACTORY
- C) IN SOME CLIMATES AND/OR CONDITIONS, IT MAY BE NECESSARY TO ADJUST THE "TST" TEMPERATURE SETTING IN THE FIELD BY OTHERS

--- FIELD WIRING BY OTHERS
 ——— WIRING BY GAYLORD

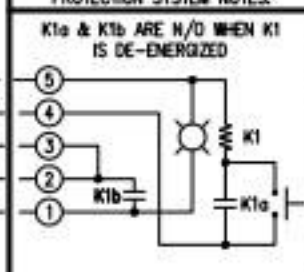


TYPICAL FIRE SYSTEM WIRING DIAGRAM (ANSUL SHOWN)



Method 1

FOR ELECTRICAL GAS VALVE AND/OR SHUNT TRIP SHUT-OFF AND/OR CONTACTOR SHUTOFF



GAS SOLENOID VALVE, N/C, INSTALLED BY PLUMBING CONTRACTOR. FURNISHED BY: REFER TO FIRE PROTECTION SYSTEM NOTES.

CONTACTOR COIL, N/O CONTACTS, TO SUIT ELECTRICAL LOAD, FURNISHED BY OTHERS, INSTALLED BY ELECTRICAL CONTRACTOR.

PLC INPUTS (115VAC SINKING)

X0: (AS) AUTOSTART THERMOSTAT(S)
 X1: (1U) "UV SYSTEM ON"
 X2: (2U) "UV LAMP FAILURE"
 X3: (3U) "UV SAFETY INTERLOCK ACTIVE"
 X4: SPARE
 X5: (3) THERMOSTAT RETURN (N.C. STATS)
 X6: (FS) REMOTE FIRE SWITCH
 X7: (RF1/RF2) REMOTE "ON/OFF"

PLC OUTPUTS (115VAC SOURCING)

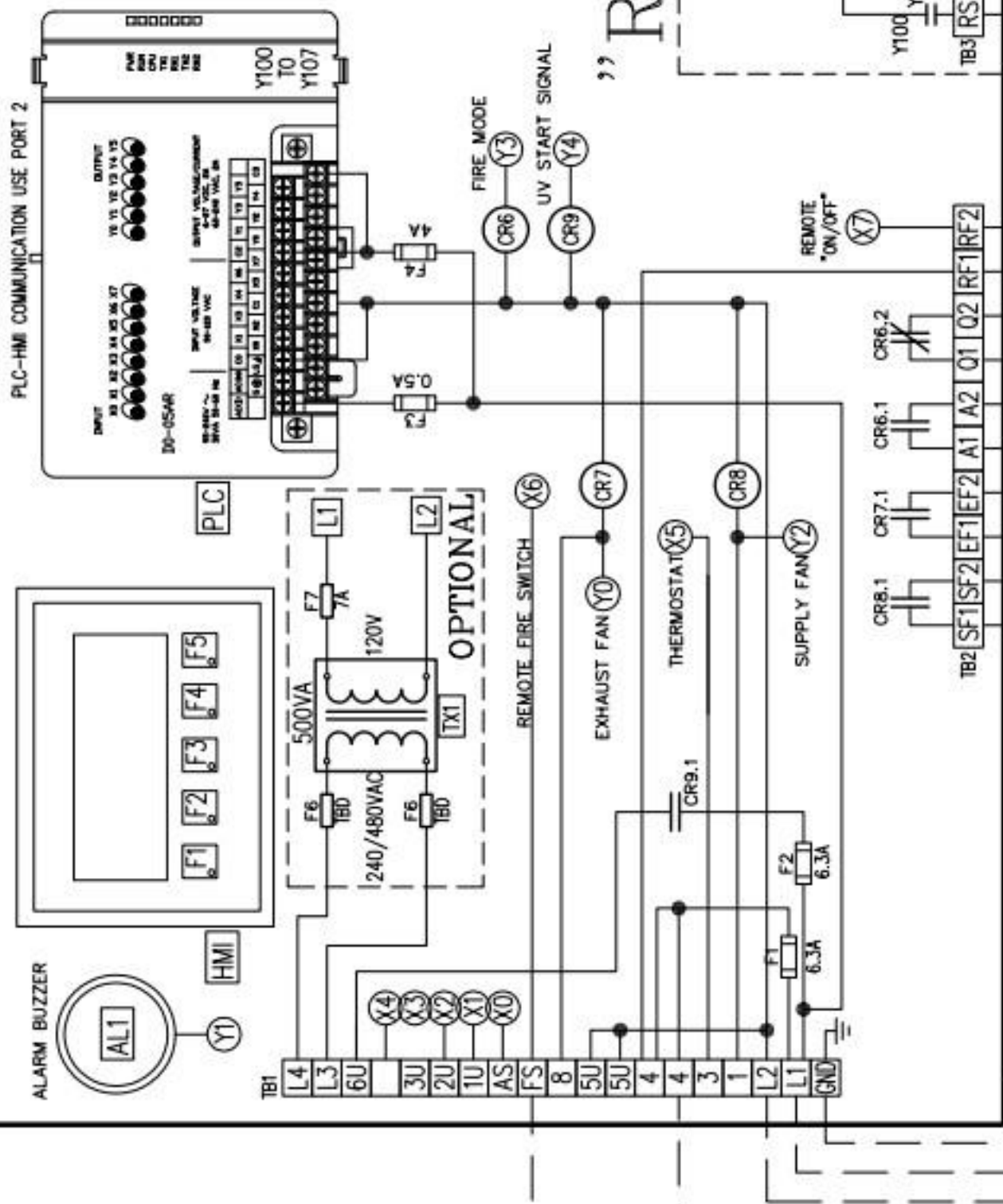
Y0: (8) EXHAUST FAN MOTOR STARTER
 Y1: ALARM BUZZER
 Y2: (1) SUPPLY FAN MOTOR STARTER
 Y3: FIRE MODE (INT. OR EXT.)
 Y4: (6U) UV START SIGNAL
 Y5: SPARE

"RM" OPTION

YELLOW WIRES ARE EXTERNAL SOURCED POWER.

REMOTE INDICATOR LIGHTS

REMOTE INDICATOR LIGHTS. CUSTOMER TO SUPPLY COM. (SINK OR SOURCE)

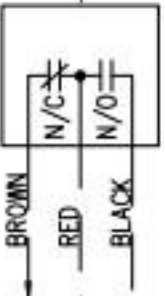


MAIN ELECTRICAL SERVICE, MUST BE FUSED SEPARATELY.
 120/1/60 POWER

OPTIONAL POWER
 MAIN ELECTRICAL SERVICE, MUST BE FUSED SEPARATELY.
 220-480/1/60 POWER

OPTIONAL CONNECTIONS BY OTHERS. SEE TERMINATION SCHEDULE AND FM WIRING NOTES FOR USAGE

REMOTE START N.O. SWITCH



FIRE SYSTEM DUAL MICRO SWITCHES LOCATED IN AUTOMAN. SWITCHES SHOWN IN COCKED POSITION (SYSTEM READY)