

## Operation and Servicing Manual

# Grill Grease Caddy



**DANGER:** Please read this operation and servicing manual thoroughly before installing, servicing or using this equipment. Failure to properly install, service or use this equipment, or alteration of this equipment, can cause serious property damage, injury or death.

### Models

LS 1 60 GG 10SS-NA-H –  
Grill Grease Transport Caddy 60 Lb/8 Gal (27.2kg/30.2 l)  
10SS-NA-H – Heated Caddy 75 Lb/10 Gal (34 kg/37.8 l)

## About this manual

Store this manual in a safe place for future reference.

### About Frontline International, Inc.

- Through a dedication to the development, manufacture, and delivery of quality cooking oil management systems, Frontline International, Inc. remains a leading global source for equipment solutions that safely and efficiently dispense, contain, monitor, extract, transport, or filter cooking oil for immediate on-premise recycling and use.
- A stakeholder focused organization, our sustainability relies on initiatives that benefit associates, customers and community – from responsible manufacturing techniques to conservation of resources and performance metrics.
- With our valued network of service and installation experts our branded and custom products enhance productivity, improve operations and save costs for professionals within foodservice, hospitality, and other markets around the world, every day.

### Table of contents

---

Parts View.....	1
Operation .....	2
Pumping grease into the waste oil tank .....	3
Troubleshooting (grease will not pump) .....	5
Cautions and notes .....	6
Warranty .....	7

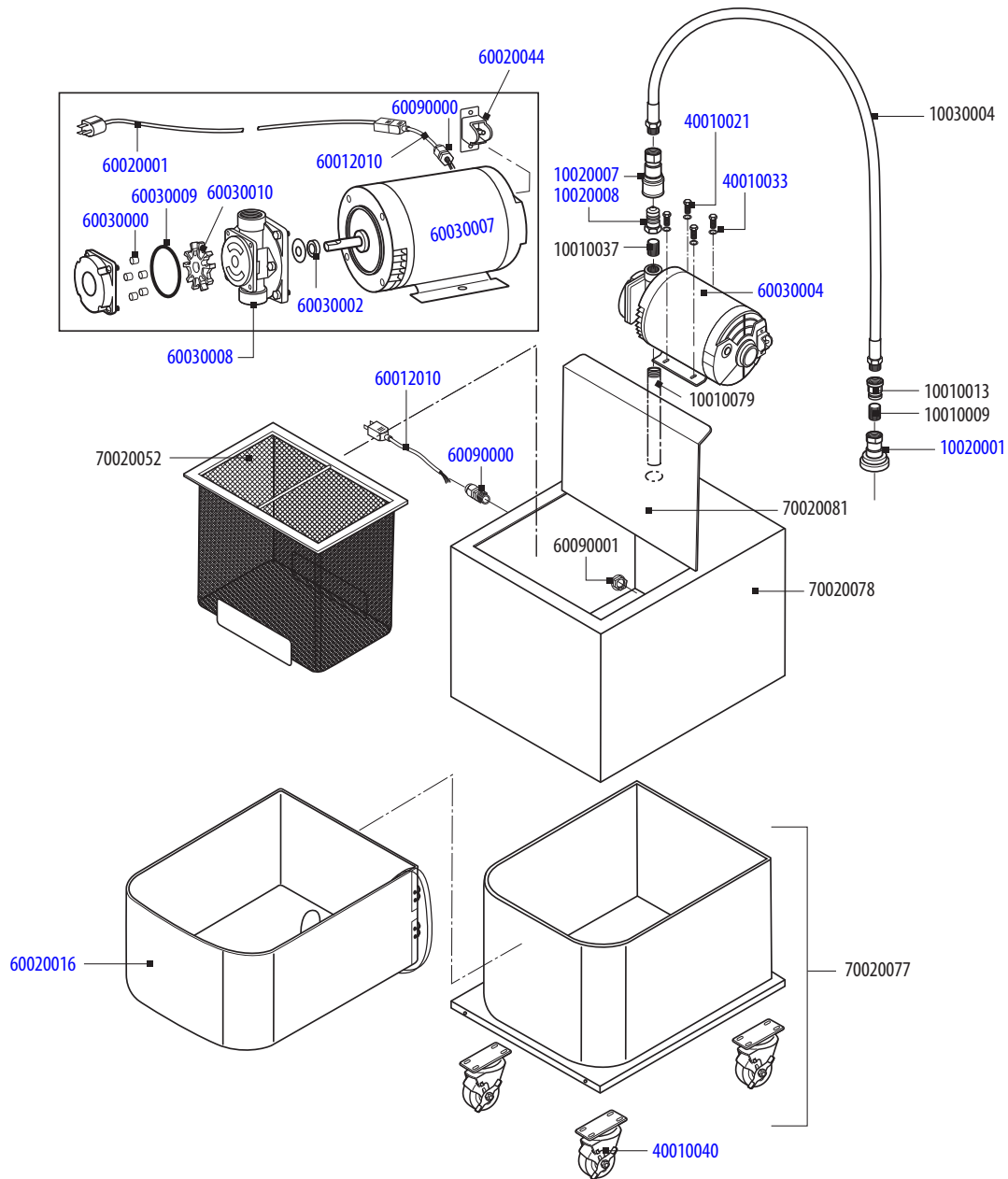
## Record your model and serial numbers

Find the model and serial numbers between the caddy handle at the rear of the motor. Record the numbers in the following space for warranty and parts information.

Model Number: \_\_\_\_\_

Serial Number: \_\_\_\_\_

## Parts View



### Grill Grease Caddy Part Numbers and Part Descriptions

<b>1002007</b>	¾" Quick Disconnect Coupler	<b>4001004</b>	3" Poly Swivel Castor w/ Top Locking Brake	<b>6003008</b>	Pump Head for ½ HP for Caddy Motor
<b>1003004</b>	.750 x 48" White kleenflow hose w/ ¾" NPT ridgid ends	<b>60012010</b>	10" Power Cord	<b>6003009</b>	Silicone O Ring for Caddy Pump
<b>10010013</b>	¾" x ½" galvanized reducing coupler	<b>60020001</b>	Caddy Power Supply Cord	<b>60030010</b>	Pump Rotor Gear for Caddy Pump
<b>10010009</b>	½" galvanized close nipple	<b>60020016</b>	120V 250W Heater Belt	<b>60090000</b>	½" NPT Domed Cord Strain Relief
<b>10020001</b>	½" quick disconnect coupler	<b>60020044</b>	Caddy Motor Switch Kit	<b>60090001</b>	½" Cord Strain Relief Nut
<b>10020008</b>	¾" Quick Disconnect Nipple	<b>60030000</b>	Pump Rollers - White Teflon Rollers (Set of 5)	<b>70020077</b>	LS-1-60GG Rolling Chassis
<b>10010037</b>	¾" Galvanized Close Nipple	<b>60030002</b>	Seal Kit for Caddy Pump	<b>70020052</b>	Grill Caddy Basket
<b>10010079</b>	¾" x 12" Galvanized Nipple	<b>60030004</b>	½ HP Caddy Motor and Pump	<b>70020078</b>	LS-1-60GG Body
<b>40010021</b>	5/16" -18 x 3/4" Unslotted Hex Screw	<b>60030007</b>	½ HP Caddy Motor only w/ Power Cord & Switch	<b>70020081</b>	LS-1-60GG Lid
<b>40010033</b>	5/16" Medium Split Lockwasher 18-8 SS				



**DANGER:** This filtering unit is intended for use with hot oil and grease at temperatures between 100° F (38° C) and 375° F (190° C). Always wear protective, heat-resistant gloves, heat-resistant apron and goggles when using this equipment. Failure to properly use this equipment can lead to serious injury or death.

## Operation

Follow these steps when working with your caddy.

1. Complete all operations with the proper safety gear that includes eye goggles, hot oil gloves, and a hot oil apron.



**IMPORTANT –** Never drain grease into the caddy without the filter basket in place as this will cause serious damage to the pump.

2. Make sure filter basket is in place before grill grease is drained into the caddy.



GRILL CADDY BASKET

3. Using the scraper(s), scrape the grease and debris into the drain located at the front of the grill. Drain the used grill grease into caddy being careful of hot grease.



- The grill caddy must be plugged into a live outlet near the grill to keep the grease in liquid state. If this is not possible, move and plug the caddy into a live outlet for two to four hours (or until the grease is in liquid state) before the grill grease can be pumped into the storage tank.

**NOTE – Do not plug the caddy heater into the control panel outlet to heat the grease, as this is only energized when the “push to pump” button is pressed.**



**MOTOR CORD PLUG –**  
CONNECT THE MOLDED POWER CORD (SUPPLIED)  
INTO THE MOTOR PLUG TO PUMP THE GREASE.



**HEATER CORD PLUG –**  
CONNECT THE MOLDED POWER CORD (SUPPLIED)  
INTO THE HEATER PLUG TO HEAT GREASE.

- The pump and hose will become clogged if the grease is not completely liquefied. Ensure the grease is liquid before pumping.
- When grease caddy is ready to be emptied, close the grease caddy lid, and carefully push the caddy to the used oil storage tank or pumping station.

**DANGER: The caddy lid is designed to prevent hot oil and grease spills when transporting the caddy. Failure to use the lid or properly secure the lid may result in hot oil and grease spills, which can lead to serious injury or death.**



## Pumping grease into the waste oil tank

1. Check the storage tank control panel and make sure the green light is lit on the panel. If the green light is not on, the system has lost power. See Troubleshooting.
2. Connect the hose from the grease caddy to the storage tank fill station by connecting the female disconnect fitting from the caddy to the male fitting on the tank fill station. To connect, the large female fitting must have its outer ring pulled back, then push it over the male fitting on the tank.
3. Make sure the connection is secure by tugging on the hose. Note that the grease must be in a liquid state (hot) for the pump to work properly.

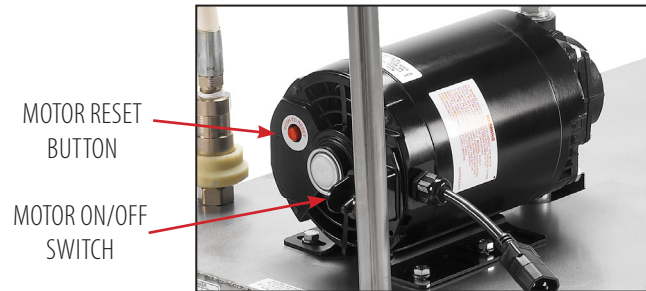


4. Remove the electrical cord from the heater and plug the cord into the motor on top of the caddy and into the receptacle on the storage tank control panel.

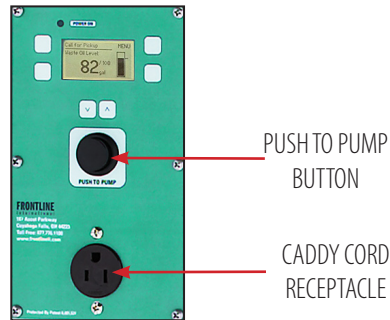


**IMPORTANT – Use only the receptacle in the control panel when pumping grease into the tank. A POTENTIAL TANK OVERFLOW COULD OCCUR IF THE CADDY PUMP IS POWERED FROM A DIFFERENT POWER SOURCE.**

- Turn the switch on the back of the motor to the ON position.



- Push in and HOLD the black button on the control panel labeled "PUSH TO PUMP".



- When the caddy is empty of grease, continue to hold the button and work the pump for an additional 30 seconds. When finished, release the black button on the control panel face.



**Note – The pump should make a different sound when the caddy is empty.**

- Disconnect the hose and store in a safe place until the next time you need it.
- Disconnect the power cord from the tank control panel and return the caddy back to the grill. Plug the cord into the heater and a receptacle to keep the caddy heated.
- Clean the filter strainer with hot soapy water or degreaser.
- Dry and replace the filter basket back inside the caddy.
- Clean the outside of the caddy with stainless steel cleaner and a soft cloth. Do not use harsh abrasives as this will scratch and ruin the caddy finish.

## Troubleshooting (grease will not pump)

See the following table to troubleshoot problems

PROBLEM	PROBABLE CAUSE	CORRECTIVE ACTION
Caddy motor will not run.	The caddy motor is not turned ON.	Turn the motor ON with the switch located on the back of the motor.
	Caddy motor reset switch has tripped.	Press the motor reset switch on the back of the caddy motor.
	The caddy power cord is not making proper connection.	Ensure the caddy power cord is completely plugged into the motor and the control panel receptacle.
	The tank or control panel at the fill station has lost power.	Ensure the tank or fill station control panel is plugged in.
If there is no power to the outlet make sure the circuit breaker has not tripped or that the outlet is not on a switch that is turned off.		
Caddy motor runs but no oil will pump.	Disconnect fittings are not properly connected.	Make sure the female disconnect fitting is properly connected to the male fitting.
	Caddy hose may be plugged with grease.	Run the caddy hose under hot water to liquefy any grease that may be clogging the hose.
	Caddy pump may be plugged with grease.	Remove the four screws on the front of the pump and clean the inlet and outlet port of the pump and the rotor gear.
		Make sure that nothing is blocking the inlet tube that goes down into the oil.
Assure that the oil being discarded is in liquid state.		
<b>Call 330-861-1100 if you have checked all of the above and the problem still has not been resolved.</b>		

## Cautions and notes

Follow these cautions and notes.

1. Draining grease into the caddy without the filter basket screen in place will cause serious damage to the pump and storage tank. This will void the warranty on the equipment. **Always keep the screen in place when draining grease into the caddy.**
2. Never attempt to pump solid or cold grease – this will clog the pump. Make sure grease is liquid before pumping.
3. Never pump **water** or **water and grease** through the pump.
4. Do not attempt to pump grease if green light on the control panel is not lit.

**CAUTION – Do not remove the stainless steel filter basket from the caddy when draining grease into it. This will cause serious damage to the equipment and void the warranty.**



---

## Warranty

### Limited Warranty for Frontline International, Inc. Appliances

Subject to the following conditions, Frontline International Inc. makes the following limited warranties to the original purchaser only for Frontline International appliances and replacement parts:

**NEW EQUIPMENT:** Any non-user part of a new appliance, except lamps, which proves to be defective in material or workmanship within one (1) year from date of original shipment, will be repaired or replaced without charge F.O.B. factory, Cuyahoga Falls, Ohio, or F.O.B. authorized distributor. Non-user parts on systems specifically include heater, level switch, and the control panel. Motors, pumps, and customer abuse will not be covered by this warranty.

**REPLACEMENT PARTS:** Any appliance part, except lamps, which proves to be defective in material or workmanship within ninety (90) days from the date of original installation, will be repaired or replaced without charge F.O.B. factory, Barberton, Ohio or F.O.B. authorized distributor.

This warranty for new equipment parts covers the repair or replacement of the defective part and any labor charges for the removal and installation of any non-user part specified above. Replacement parts do not have any labor coverage.

---

**FRONTLINE**  
**i n t e r n a t i o n a l**