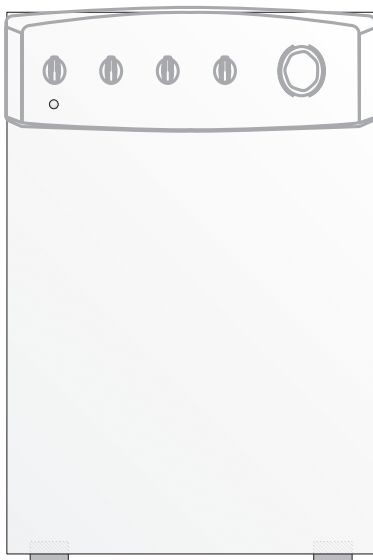


FACTORY PARTS CATALOG WASHER

Frigidaire



PRODUCT NO.	BASE MODEL NO.	COLOR
CRWS1879AS0	CRWS1879A	White

WIRING DIAGRAM - # 134103100
OWNER'S GUIDE - # 131704800
OPERATING INSTRUCTIONS - # 134108500

 **Electrolux**

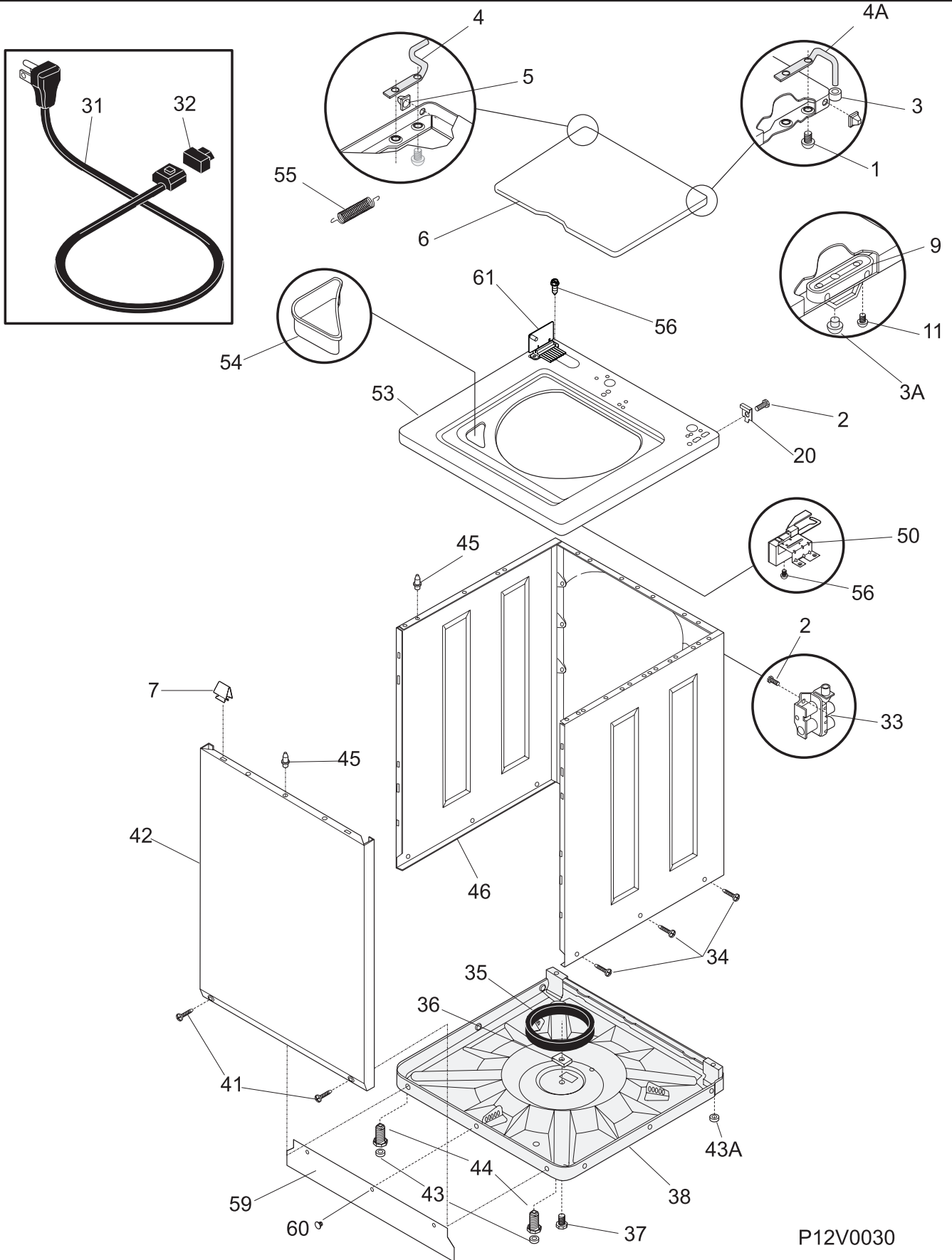
ELECTROLUX HOME PRODUCTS NORTH AMERICA
400 Des Moines St., Webster City IA 50595-1499

Publication No.
5995359881
011016
ENG/SERVICE/JAM
361

WASHER

Model No.
CRWS1879A

CABINET/TOP

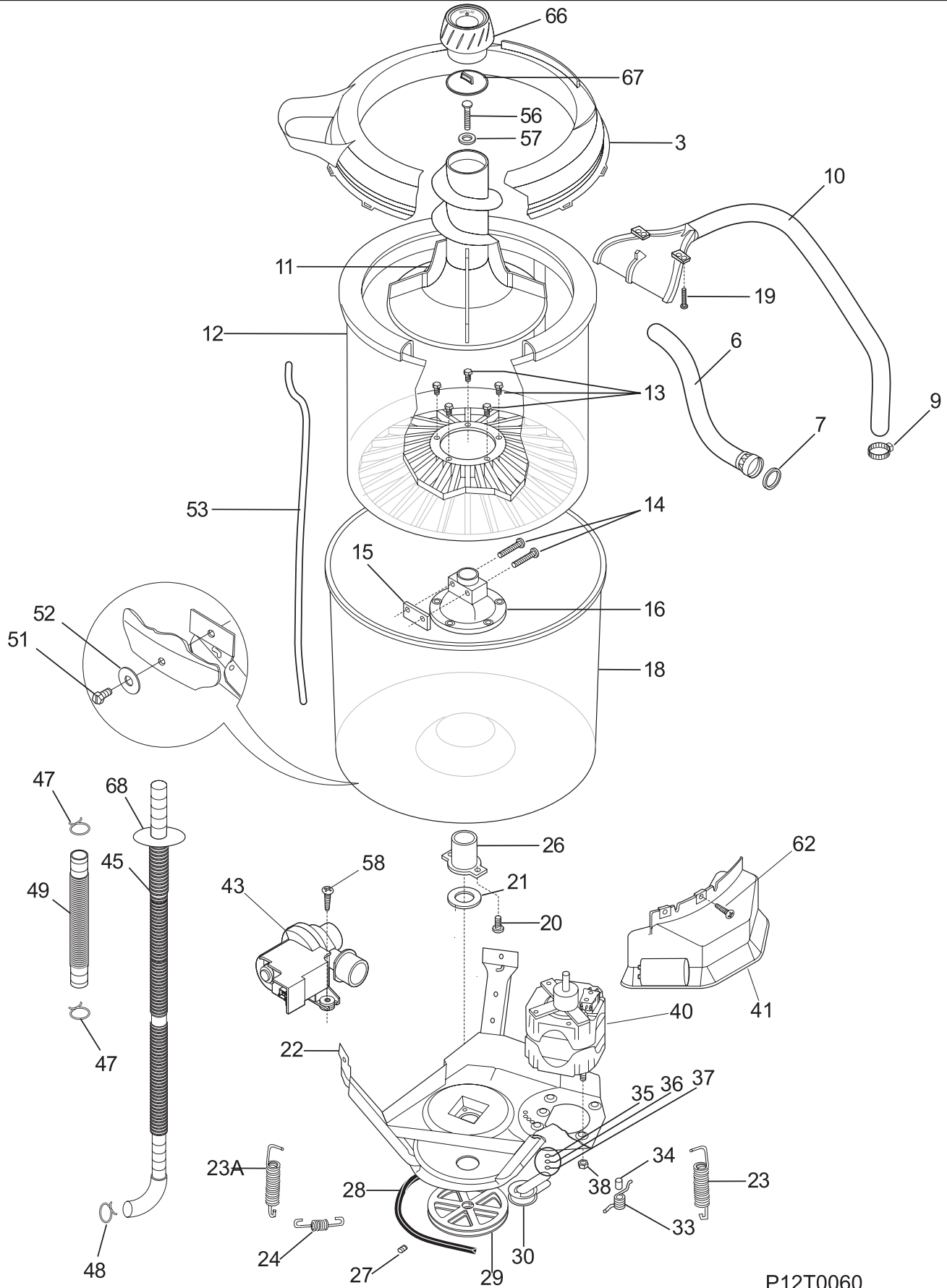


P12V0030

CABINET/TOP

POS. NO	PART NO	DESCRIPTION
1	131587500	Screw-hinge, pph 45deg hdrpt, 6-32 x 0.3125
2	131168200	Screw, 8-18 x 0.31
3	131433300	Bumper-hinge
3A	134075500	Bumper-lid
4	131385910	Hinge-bar L.H.
4A	131374220	Hinge bar R.H.
5	5303208743	Grommet-lid
6	131374401	Lid, white, w/o inst.
7	3205821	Clip-top panel to front panel
9	131390000	Strike-lid
11	3204368	Screw-strike, pph b, 6-20 x .375
20	5303208751	Hinge-rear cabinet
31 #	134100800	Cord-service
32	5303209428	Bushing-cord
33 #	131389300	Valve-water
34	131205500	Screw-body, 1/4-14 x 0.625
35	5308002385	Ring-snobber
36	3204380	Block-shipping
37	131658900	Screw-shipping
38	5303311213	Base Assembly
41	131258400	Screw-front pnl, comb th ab, 10-16 x 0.500
42	131104303	Panel-front, white
43	131422100	Pad-leveling leg
43A	131422200	Pad-level leg
44	5303309673	Leg-leveling with pad
45	131346400	Pin-locating
46	131593500	Body-white
50 #	131675600	Lock-lid
53	131452692	Panel-top blch wht FS wshr
54	5303208778	Dispenser-bleach
55	5303212876	Spring-lid
56	131243800	Screw-brkt top, pan hd locking, 8-32CA x 0.375, cr/sq drive
59	134045000	Noise Barrier
60	131362400	Fastener
61 #	131914400	Automatic temp cont bd-VAW
*	5303309503	Clip-backsheet
*	131744201	Vibration damper

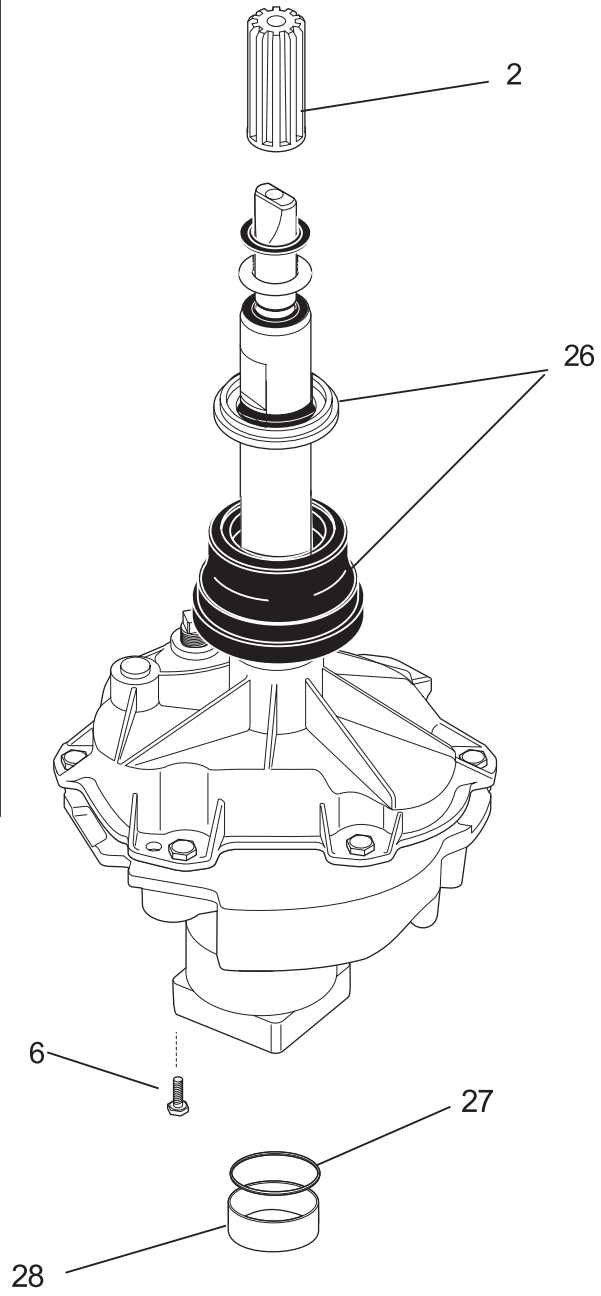
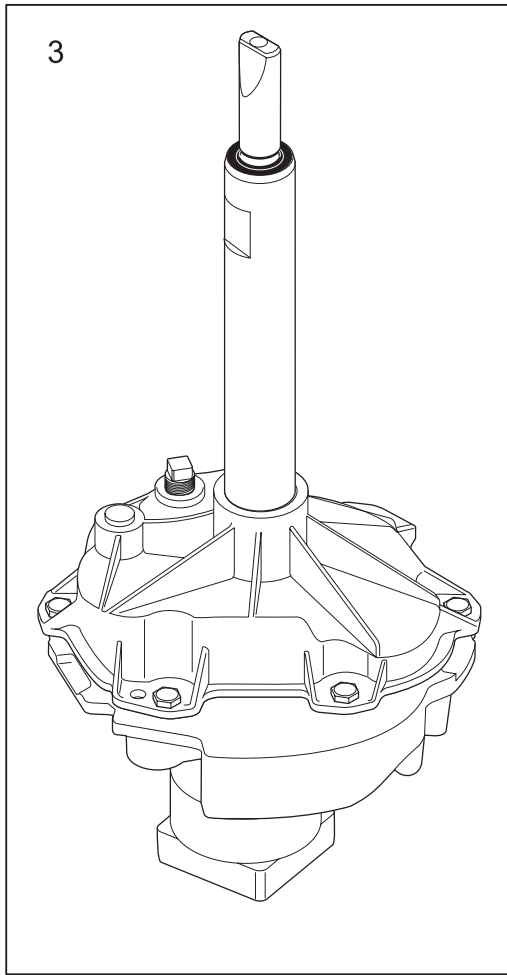
MOTOR/TUB



P12T0060

MOTOR/TUB

POS. NO	PART NO	DESCRIPTION
3	131551103	Asmy-splash tub cover H+
6	5303271009	Hose-inlet
7	5303161296	Washer-inlet hose
9	5303304824	Clamp
10	131726303	Hose, nozzle & clamp
11	131605901	Assy-agitator-dual action
12	131221300	Tub-spin
13	5303283293	Screw-trunnion, unc2a x .625, .312-18 (5)
14	131192800	Screw-lockplate, hx, .312-18 x 1.625
15	5308001923	Lock Plate
16	131545101	Trunnion
18	131557201	Tub-splash, w\air dome, brng
19	131205300	Screw, 10-16 x .75
20	3205150	Screw-tub bearing, pph b st/z, 8-12 x 0.750
21	5308002401	Washer, spin bearing, upper
22	131373610	Leg & Dome Assy
23	5303208858	Spring-vertical, short
23A	5303208860	Spring-vertical
24	131373900	Spring-horizontal
26	3204405	Bearing-outer tub
27	5303304825	Screw-set, hhd cup pt, 5/16-18 x .85, pulley, transm.
28 #	131686100	Belt-washer
29	131498301	Pulley-transmission drive
30 #	131862900	Asmy-VAW idler arm
33	3204425	Spring-torsion
34	3204426	Sleeve-idler
35	3161433	Ring-retaining
36	5303261031	Washer-pivot shaft
37	5303161306	Washer-spring
38	5303318708	Nut-motor
40 #	131896700	Asmy-mtr/pulley 3 sp
41	131899900	Asmy-mtr shield/nut cap 3 spd
43 #	131724000	Asmy-pump
45 #	131461200	Hose-drain, 90 inch
47	5303294768	Clamp-hose to tub
48	131306234	Clamp-pump
49 #	131494800	Hose-pump to tub
51	131659000	Screw-leg, hwh typ23, 5/16-18 x .875
52	131315800	Washer-leg, id x .040, 1.25 od x .335
53	5300771996	Tube-pressure
56	131468900	Screw-agitator, hwh shldr, 5/16-18 x 1.250
57	131339600	Spacer-agitator
58	131464900	Screw-pump-to bracket
62	131258400	Screw-front pnl, comb th ab, 10-16 x 0.500
66	131624500	Cup/cap assy
67	131606210	Cap Assembly
68	131707800	Ring-drain hose
*	131462500	Clip-drain hose
*	131506500	Clip-drain hose
*	131663500	Cushion
*	131896000	Isolator mount-3spd motor
*	131901400	Seal-splash tub cover
*	5303212877	Insert-spring adj
*	5303309503	Clip-backsheet

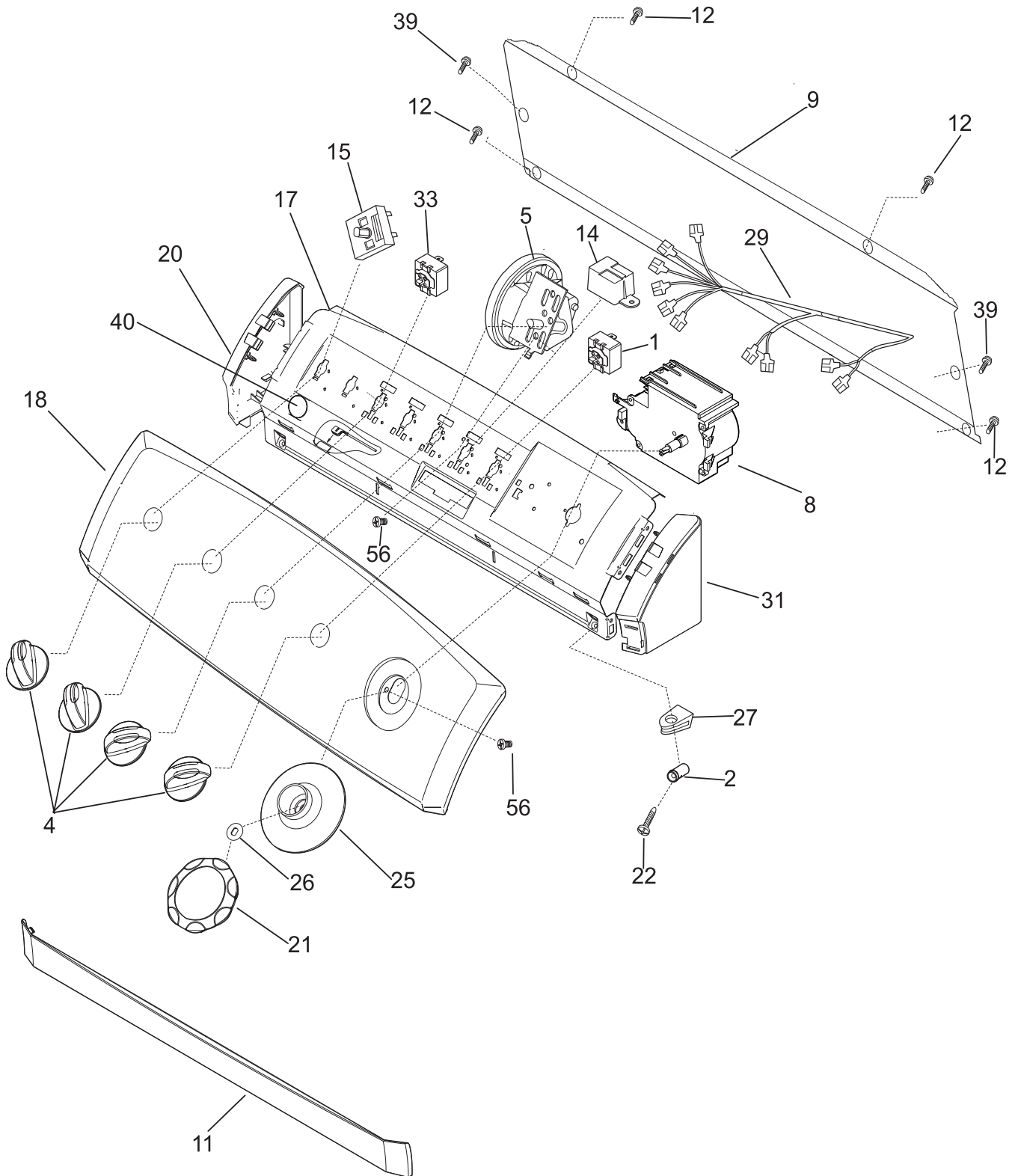


P12M0010

TRANSMISSION

POS. NO	PART NO	DESCRIPTION
2	131475100	Hub-drive
3 #	131878412	Transmission-complete
6	131346600	Screw
26	5303279394	Seal-tub
27	131784300	Washer-trans-brg block-Koyo
28	131784400	Spacer-trans brg block-Koyo

CONTROL PANEL

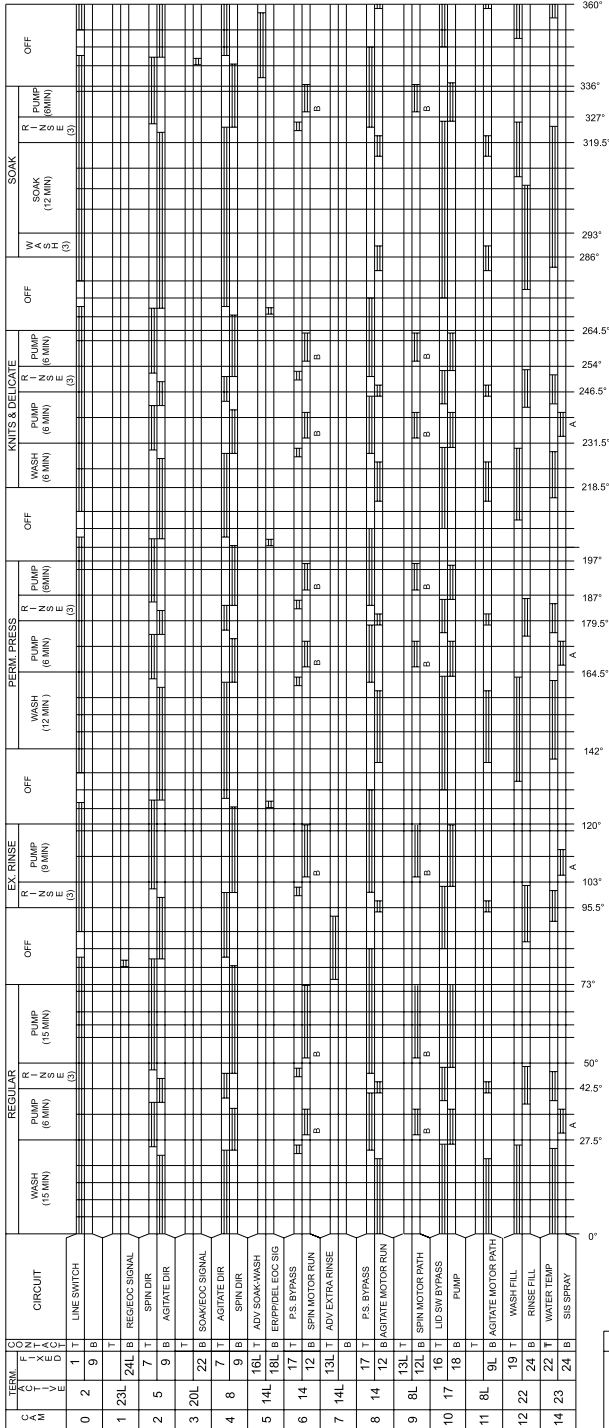


CONTROL PANEL

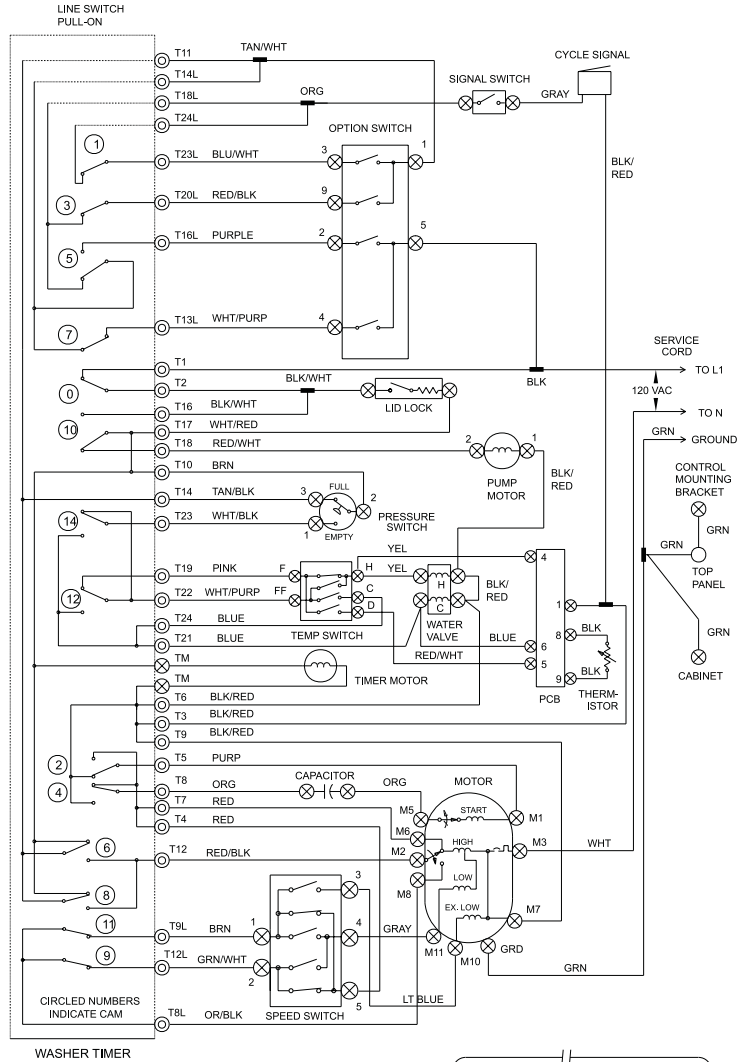
POS. NO	PART NO	DESCRIPTION
1 #	131893500	Switch-spd 4 pos rot-3spd
2	134096100	Spacer-console mounting
4	134034900	Knob-rotary-wht "Z" cons
5 #	131396200	Switch-pressure
8 #	134049300	Timer-elec Z w/buzzer
9	131992910	Backsheet "Z" cons-VAW
11	134019900	Closure-front-wht "Z" cons
12	131168200	Screw, 8-18 x 0.31
14 #	134086900	Buzzer-non adjustable
15 #	131858100	Switch-temp 7 pos rotary
17	131993010	Brkt-cont mtg M520
18	134104600	Trimplate FDA1ZSZ-2
20	134019610	End cap-LH-wht "Z" cons
21	134034800	Asmy-timer knob-white
22	131266300	Screw-end cap, cr oval head, 8-18AB x 1.250, black
25	134034700	Pointer-timer
26	5308015493	Spacer-timer shaft
27	131197000	Clip-control panel
29 #	134107200	Harness-Z-rot
31	134019600	End cap-RH-wht "Z" cons
33 #	134047700	Switch-op 4pos
39	131205100	Screw, #8 pan head, 10-10B x 0.50, cr/sq drive
40 #	134040800	Switch-round-on/off
56	131243800	Screw-brkt top, pan hd locking, 8-32CA x 0.375, cr/sq drive

WIRING DIAGRAM

CAUTION: DISCONNECT ELECTRIC
CURRENT BEFORE SERVICING

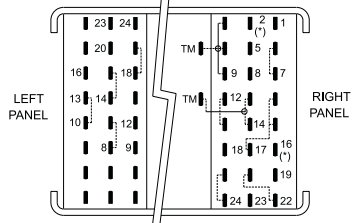
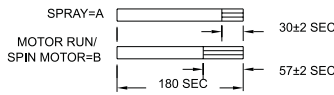


CAUTION: DISCONNECT ELECTRIC
CURRENT BEFORE SERVICING



WASHER TIMER

DETAIL FOR SPRAY SUBINTERVAL
AND SPIN MOTOR CONTROL CIRCUITS.



TIMER PLUG-MALE (END VIEW)

WIRING CODES

- ⊙ PLUG IN TIMER TERMINAL
- ⊗ QUICK DISCONNECT TERMINAL
- SCREW TERMINAL
- CONNECTION
- NO CONNECTION
- ⊗ MOTOR SWITCH
- SPLICE
- ⊗ MOTOR PROTECTOR
- CHASSIS (CABINET) GROUND

SPEED SWITCH CIRCUIT

AGIT/SPIN	1-5	1-4	2-4	2-5	1-3
N/F	X			X	
G/F		X	X	X	
G/S		X	X		
EG/S			X		X

N=NORMAL F=FAST EG=EXTRA GENTLE G=GENTLE S=SLOW

OPTION SWITCH

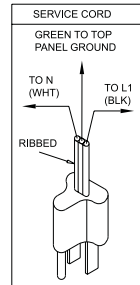
POS	OPTION	1-9	1-3	5-4	5-2
1	POWER SCRUB/EXTRA RINSE			X	X
2	EXTRA RINSE	X		X	
3	POWER SCRUB		X		X
4	OFF	X	X		

X=SWITCH CLOSED

TEMPERATURE SWITCH CIRCUIT

WASH/RINSE	F-H	FF-H	FF-C	F-D
H/C	X			
W/C	X		X	
C/C			X	
WW		X	X	
R/C/C			X	X
R/W/C	X			X
R/WW		X		X

H=HOT R=REGULATED
C=COLD W=WARM



WIRING DIAGRAM
P/N 134103100