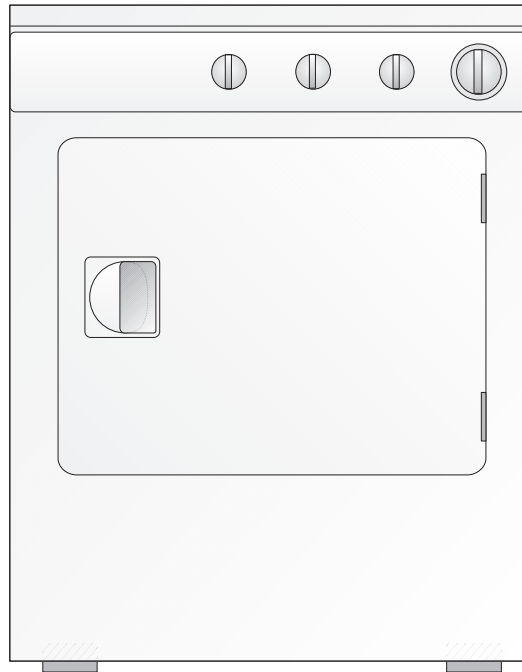


# FACTORY PARTS CATALOG DRYER

*Frigidaire*

 **Electrolux**



PRODUCT NO.	BASE MODEL NO.	SERIES	COLOR	VOLTS
CREF342AS2	CREF342A	Frigidaire	white	240
<b>MARKET</b>				
North America				

**WIRING DIAGRAM - # 134103700**  
**OWNER'S GUIDE - # 131883500**  
**INSTALLATION INSTRUCTIONS - # [134198100](#)**

**ELECTRIC  
DRYER**

**Model No.  
CREF342A**

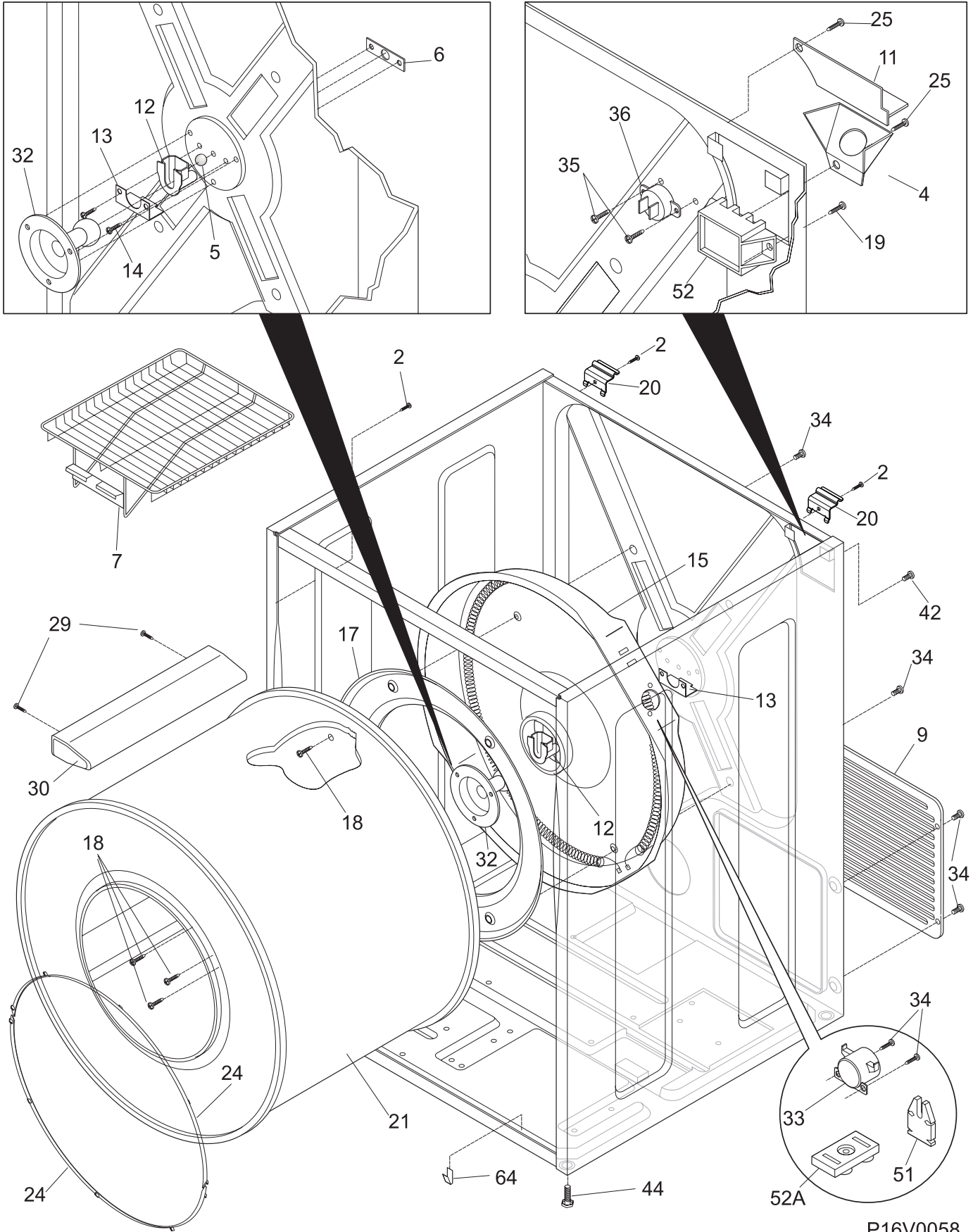
 **Electrolux**

ELECTROLUX HOME PRODUCTS, INC.  
P.O. BOX 212378, Augusta, GA 30917

Publication No.  
 5995380655  
 021101  
 -EN/SERVICE /ECL  
 361

©2002 Electrolux Home Products, Inc.  
All rights reserved

CABINET/DRUM

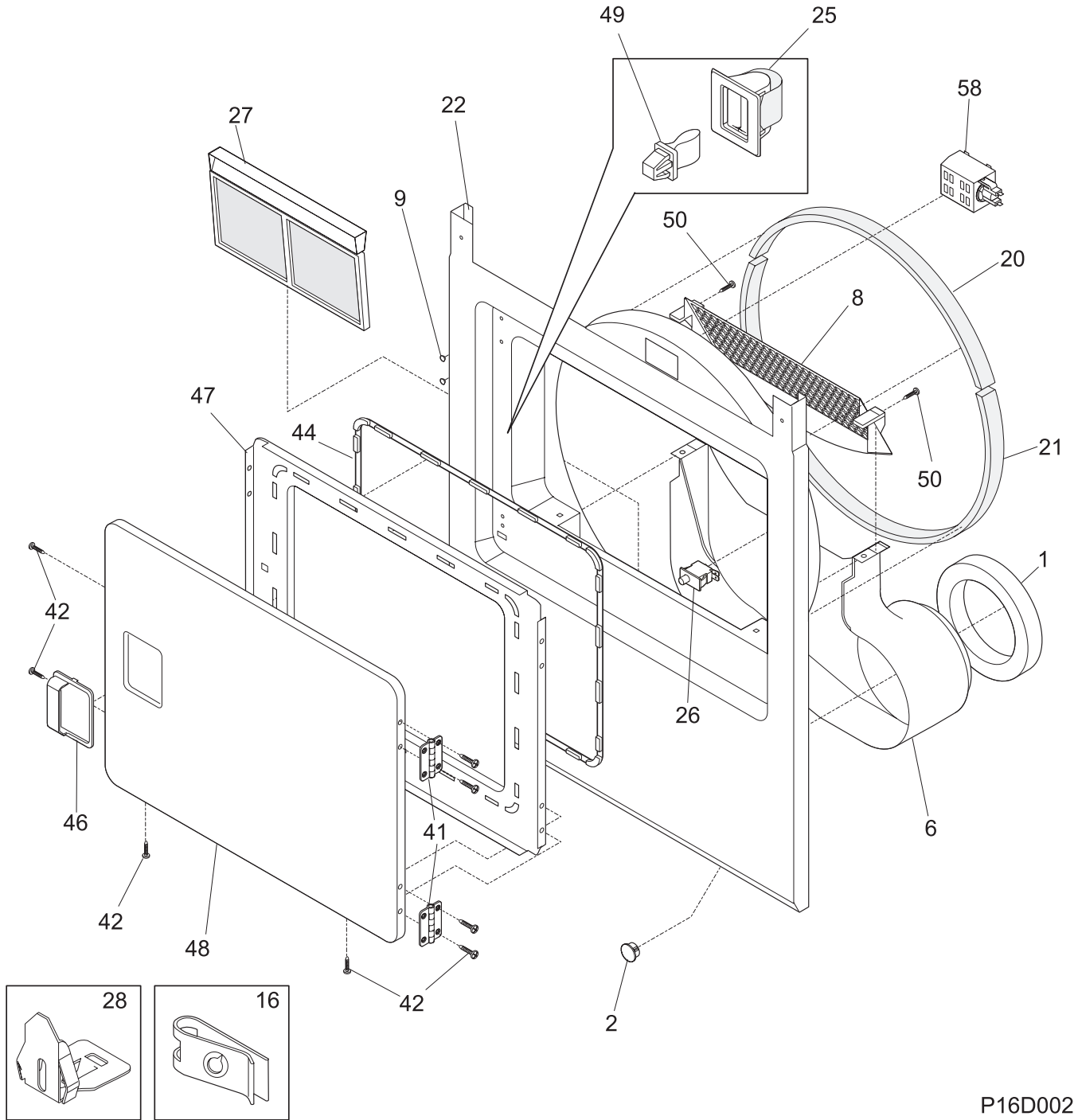


P16V0058

CABINET/DRUM

POS. NO	PART NO	DESCRIPTION
2	131168200	Screw,pan head ,8-18B x 0.31
4	131785200	Bracket,elec power cord ,knock out
5	5303281019	Ball
6	5303281020	Clip,ball ,steel ,flat nut
7	134121200	Rack,drying
9	131793201	Panel,access ,rear
11	5303211428	Cover,terminal block
12	131825900	Bearing,drum support
13	131724300	Bracket,bearing support
14	131205400	Screw,bracket mtg. ,10-16B x 1.375 ,cr/sq drive
15 #	131553900	Heater Assy,w/housing/felt
17	3204254	Baffle,heater shield
18	131477000	Screw,shaft/baffle mt ,10-16AB x 0.375 ,special
19	131205300	Screw,10-16 x 0.750
20	131469100	Bracket,hinge ,rear ,top panel mtg.
21	134122532	Drum,dryer ,galvanized stl. ,service kit
24	131963900	Glide,drum
25	5303015671	Screw,hex washer head ,8-18 x 0 .375 ,cup point
29	131382300	Screw,quadrex head ,10-14 x 1.00 ,vane mtg.,special
30	5303201200	Vane,straight
32	131777700	Shaft,drum support ,ballhitch
32*	5303307893	Lubricant,high temp
33 #	3204267	Thermostat,safety
34	131243700	Screw,pan head ,8-18AB x 0.375 ,cr/sq drive
35	131892100	Screw,6-20B x 0.230
36 #	134120900	Thermal Limiter
42	131209600	Screw,flat head ,8-18AB x 0.44 ,cr/sq drive
44	134158000	Screw,leveling leg
51	131472100	Insulator,heater housing
52 #	134101400	Terminal Block,main
* #	134110500	Wiring Harness,main
52A	3202786	Terminal Block,heater housing
64	131704600	Clip
*	5303937141	Stacking Kit,washer/dryer
* #	5303281153	Rear Bearing Kit,includes 5,6 ,12,13,14,18,32

FRONT PANEL/LINT FILTER

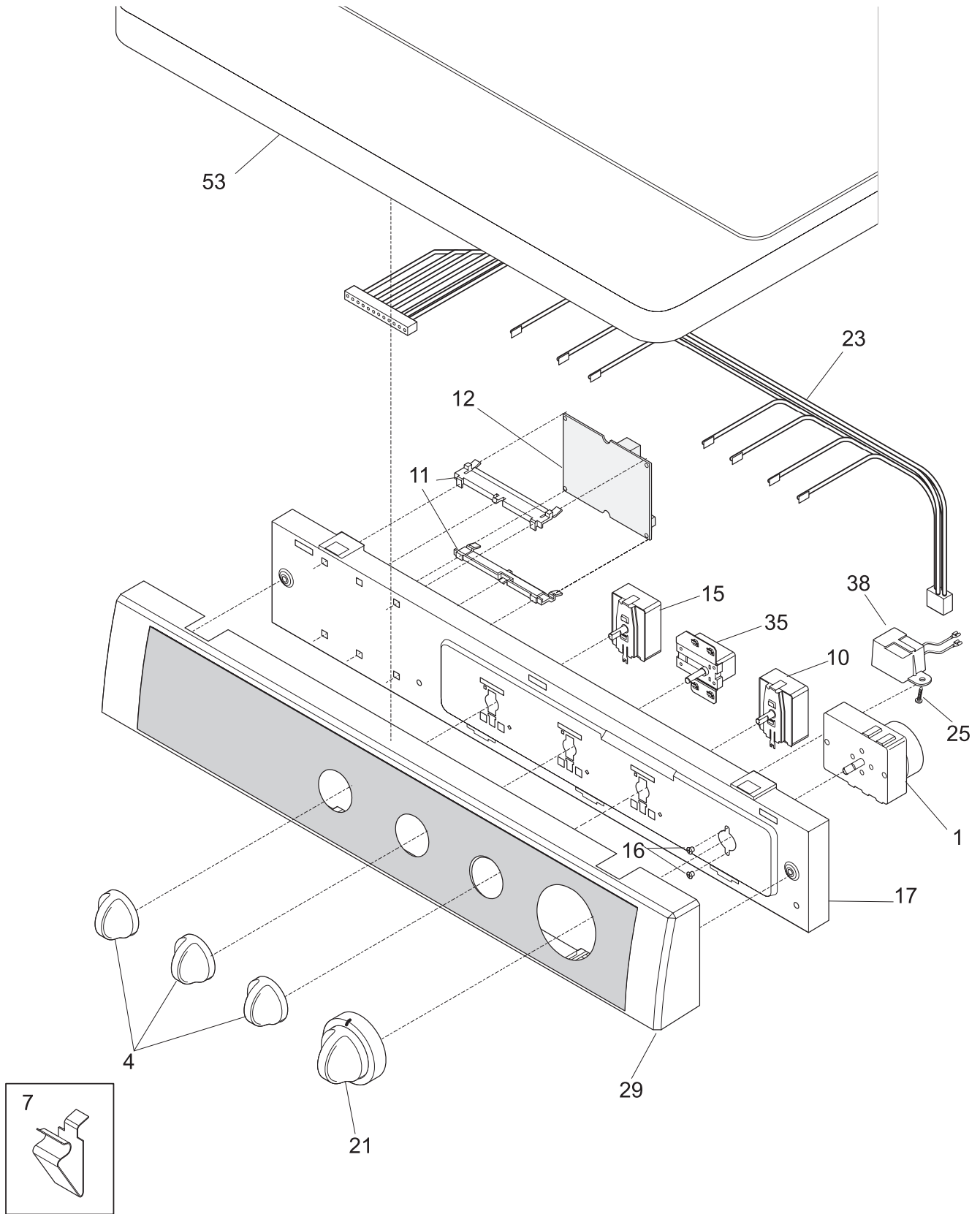


P16D0026

FRONT PANEL/LINT FILTER

POS. NO	PART NO	DESCRIPTION
1	134063300	Seal,air duct
2	131397000	Plug,dome ,white
6	131621900	Duct,air
8 #	131845801	Cover,lint housing ,w/moist sensor
8* #	131657500	• Wiring Harness,moisture sensor
9	131633200	Plug,white
16	131063700	Clip,wiring
20	134036400	Seal,felt ,upper
*	5308027429	Adhesive,high temp
21	134134700	Seal,felt ,lower
22	131845902	Panel,stacking ,white ,front ,with lamp hole
25	131658800	Door Catch
26 #	131843101	Switch,door ,with drum light
27	131450300	Trap,lint blade assy
28	5303281074	Clip,guide ,(3)
41	131627500	Hinge,door
42	131209600	Screw,flat head ,8-18AB x 0.44 ,cr/sq drive
44	131129900	Gasket,door seal
46	131644700	Handle,door ,white
47	131844104	Panel,inner door ,white
48	131789303	Panel,outer door ,white
49	5303211430	Door Strike
50	131303300	Screw,pan head lock ,10-16AB x 0.500
58 #	131843500	Lamp Assy,drum light
58*#	131862800	• Lamp
*	131474700	Insulation

CONTROLS/TOP PANEL

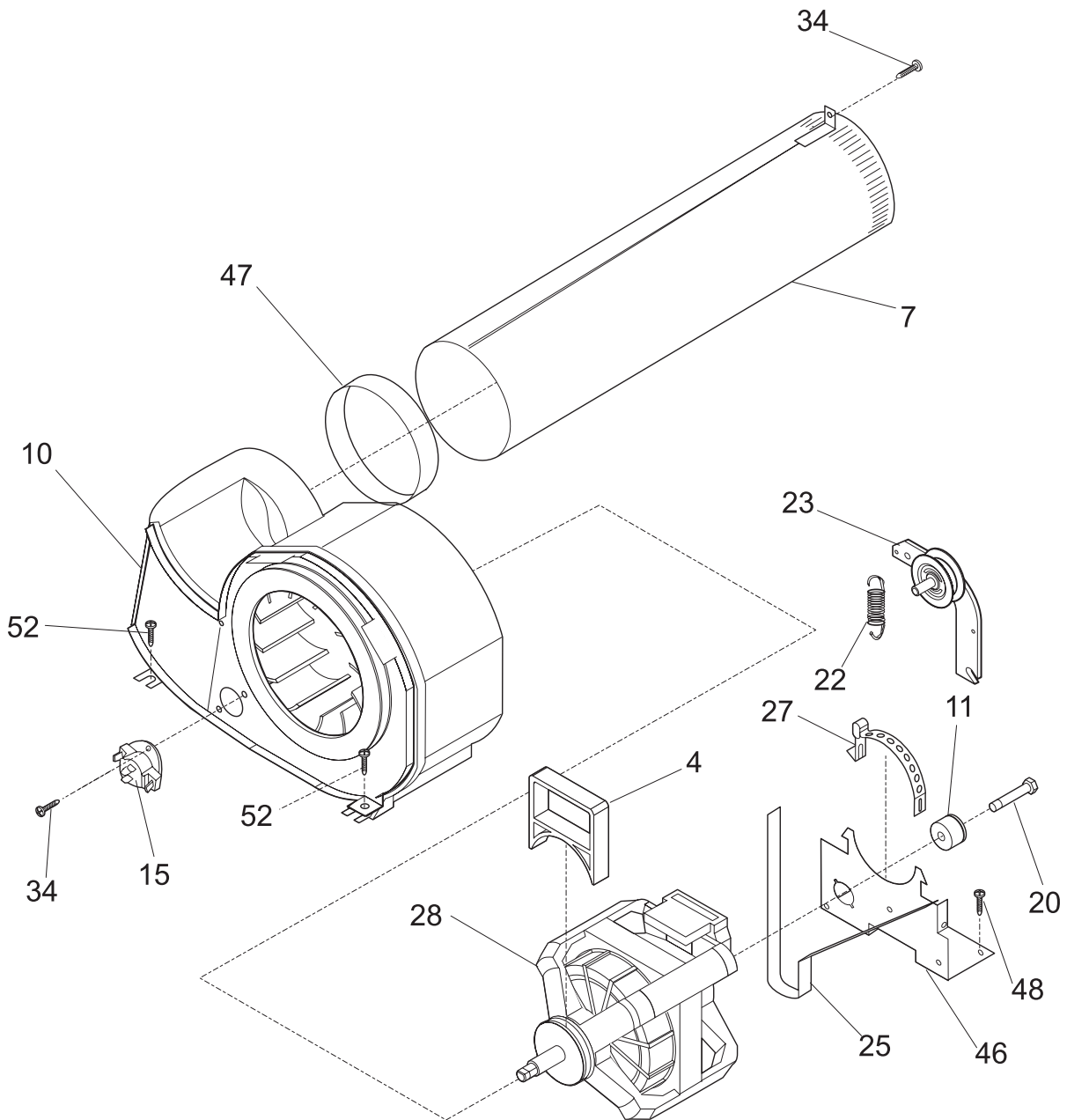


P16C0153

## CONTROLS/TOP PANEL

POS. NO	PART NO	DESCRIPTION
1 #	131789200	Timer,dryer
4	134042800	Knob,rotary ,white
7	3205821	Clip,top-to-front
10 #	131447800	Switch,start ,turn type
11	131587400	Bracket,pc board mtg. ,(2)
12 #	131620200	Control Board,moisture sensor
15 #	131777900	Switch,temperature ,4 posn rotary
16	134034300	Screw,pan hd phillips ,8-18B x 0.250
17	134064501	Bracket,control mtg.
21	134042600	Knob,timer ,white/gray
23 #	134063800	Wiring Harness,control
* #	134110500	Wiring Harness,main
25	5303015671	Screw,hex washer head ,8-18 x 0 .375 ,cup point
29	131666945	Console,frame ,white ,w/trim & tape
35 #	131243200	Switch,xrinse/temp/bzr ,2 position ,(2)
38 #	5303210285	Buzzer
53	134086812	Panel,dryer top ,white ,stackable

MOTOR



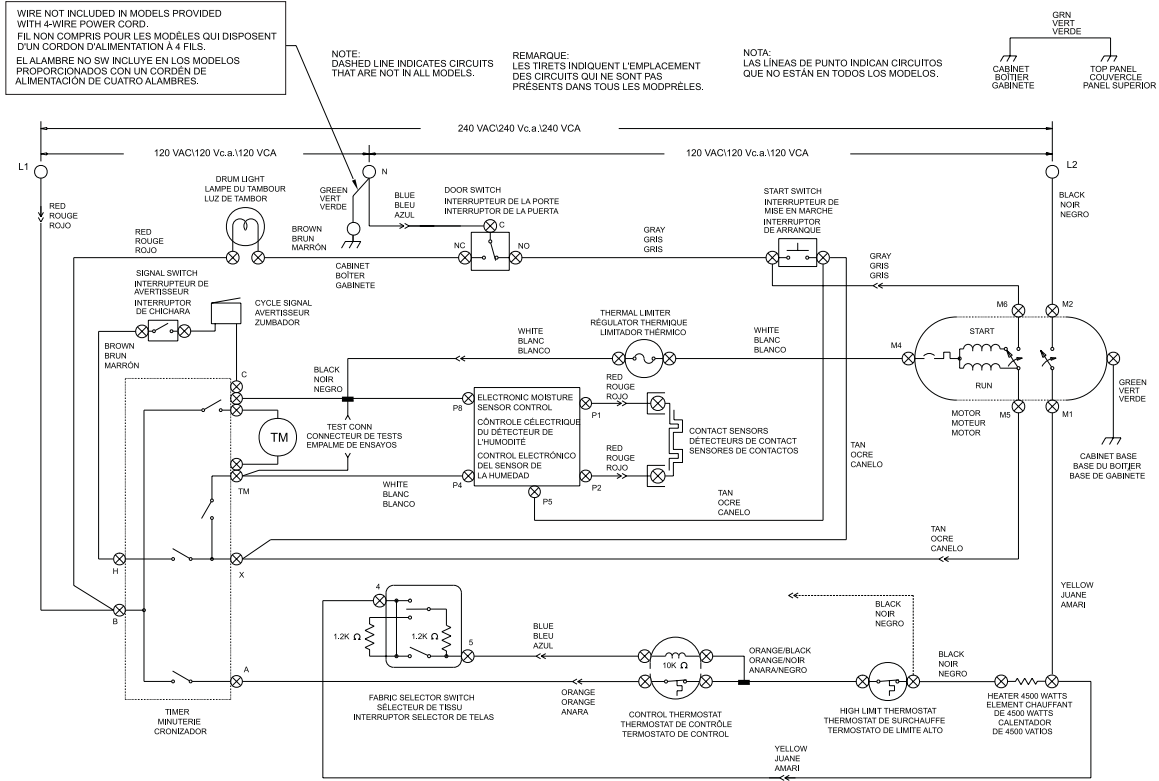
P16M0024

## MOTOR

POS. NO	PART NO	DESCRIPTION
4	131435200	Lock,blower housing
7	131451600	Tube,exhaust ,rear ,w/mtg bracket
7*	131456800	Tube,exhaust ,side/bottom ,Optional Kit
10 #	131775600	Housing,blower assy ,cover & wheel
11	131749800	Spacer,idler
15 #	134048800	Thermostat,control
20	131017900	Screw,hex head ,1/4-20T x 1.25 ,spacer mtg.,thread cutting
22	131601000	Spring,idler arm
23 #	131863000	Idler Arm
25 #	134163400	Belt
27	131419800	Clamp,motor mtg.
28 #	131560100	Motor,main drive ,w/pulley
34	131243700	Screw,pan head ,8-18AB x 0.375 ,cr/sq drive
46	131601100	Bracket,motor mtg.
47	131633300	Seal,exhaust tube
48	131168200	Screw,pan head ,8-18B x 0.31
52	131303100	Screw,hex washer head ,10-16AB x 0.625

WIRING DIAGRAM

CAUTION: DISCONNECT ELECTRIC CURRENT BEFORE SERVICING  
 MISE EN GARDE: METTRE HORS TENSION AVANT D'EFFECTUER TOUTE MESURE D'ENTRETIEN.  
 PRECAUCION: DESCONECTAR LA CORRIENTE ELECTRICA ANTES DE DAR SERVICIO A LA SECADORA.



WIRING CODES	CODES DE CÂBLAGE	CODIGOS DE ALAMBRADOS
⊗ QUICK DISCONNECT TERMINAL	BORNE A OBORNE ÉBRANCHEMENT RAPIDE	TERMINAL DE DESCONEXION RAPIDA
⊕ CONNECTION	CONNEXION	CONNEXION
⊖ NO CONNECTION	AUCUNE CONNEXION	SIN CONEXION
⊗ MOTOR SWITCH	INTERRUPTEUR DU MOTEUR	INTERRUPTEUR DEL MOTOR
⊕ SPLICE	ÉPISURE	EMPALME
⊖ MOTOR PROTECTOR	PROTECTEUR DU MOTEUR	PROTECTOR DEL MOTOR
⊕ CHASSIS (CABINET) GROUND	MISE À LA TERRE DU BOMISE TIËR	PUESTAA TIERRA DEL CHASIS (GABINETE)
⊖ SCREW TERMINAL	BORNE À VIS	BORNE DE TORNILLO
⊗ HARNESS CONNECTOR TERMINAL	BORNE À CONNECTEUR DE HARNAIS	TERMINAL CONECTOR DE CONEXIONADO
⊕ INSULATED TERMINAL	BORNE OSOLÉE	TERMINAL AISLADO

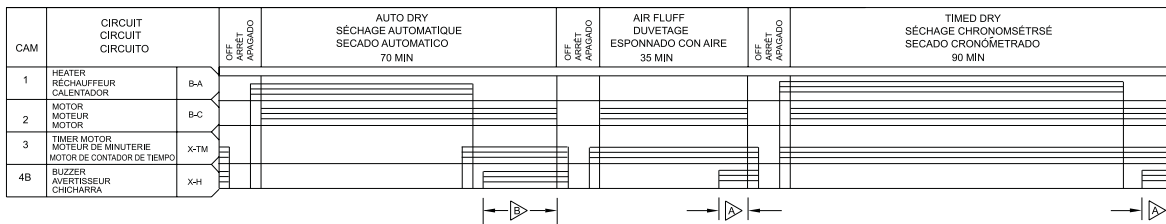
FABRIC SELECTOR SWITCH INTERRUPTEUR SELECTEUR DE TELAS		RESISTANCE RESISTANCE RESISTENCIA
FUNCTION	FNCTION	FUNCION
REGULAR		∞
MEDIUM		2.4K Ω
MEDIUM/LOW		1.2K Ω
LOW		10 Ω MAX

NOTES:  
 1. ALL WIRING MUST CONFORM TO LOCAL ELECTRICAL CODES.  
 2. CONNECT DRYER TO A 30 AMP INDIVIDUAL BRANCH CIRCUIT.  
 3. TIMER SHOWN IN OFF POSITION, DOOR SWITCH CLOSED.  
 MOTOR AT REST, THERMOSTAT CLOSED AND FABRIC SELECTOR SWITCH AT REGULAR.

REMARQUES:  
 1. TOUT LE CÂBLAGE DOIT RESPECTER LES CODES DE L'ÉLECTRICITÉ LOCAUX.  
 2. BRANCHER LA SÈCHEUSE À UNE DÉRIVATION DISTINCTE DE 30 AMPÈRES.  
 3. MINUTERIE ILLUSTRÉE EN POSITION FERMÉ, INTERRUPTEUR DE LA PORTE FERMÉ, MOTEUR ARRÊTÉ, THERMOSTAT FERMARRETÉ ET BOUTON DE SÉLECTION DU TISSU SUR RÉGULIER.

NOTAS:  
 1. TODAS LAS INSTALACIONES ALAMBRICAS DEBEN CUMPLIR CON LOS CODIGOS ELECTRICOS LOCALES.  
 2. CONECTAR LA SECADORA A UN CIRCUITO DE RAMAL INDIVIDUAL DE 30 AMPERIOS.  
 3. EL CRONIZADOR SE MUESTRA EN POSICION APAGADO, EL INTERRUPTEUR DE LA PUERTA CERRADO, EL MOTOR EN REPOSE, EL THERMOSTATO CERRADO Y EL INTERRUPTEUR SELECTOR DE TELAS EN REGULAR.

CYCLES/CYCLES/CICLOS



BAR CHART ABOVE REPRESENTS ONE COMPLETE REVOLUTION OF TIMER SHAFT.

SHADED PORTION OF BAR CHART INDICATES THE PROPORTIONAL TIMES THAT INTERNAL TIMER CONTACTS ARE CLOSED.

A PULSAR CAM, LOCATED NEXT TO THE BUZZER CAM AND ROTATING AT 12 REVOLUTIONS PER HOUR, ALLOWS CIRCUITS "X-H" TO CLOSE FOR 5 SECONDS (43 SECONDS).

▷ 1 OR 2 TIMES IN THIS AREA  
 ▷ 3 TO 4 TIMES IN THIS AREA

LE DIAGRAMME SUR LA GAUCHE REPRÉSENTE UNE ROTATION COMPLETE DE L'ARBRE DE LA MINUTERIE.

LA PARTIE OMBRÉE DU DIAGRAMME INDIQUE LE TEMPS RELATIF PENDANT LEQUEL LES CONTACTS INTERNES DE LA MINUTERIE SONT FERMÉS.

UNE LEVA GENERADORA DE IMPULSION SITUÉE À CÔTÉ DE LA CAME DE L'AVERTISSEUR ET TOURNANT À RAISON DE 12 TOURS À L'HEURE PERMET AU CIRCUIT «X-H» DE SE FERMER PENDANT 5 SECONDES (43 SECONDES).

▷ 1 OU 2 FOIS DANS CETTE SECTION  
 ▷ DE 3 À 4 FOIS DANS CETTE SECTION

EL GRAFICO DE BARRAS DE LA IZQUIERDA REPRESENTA UNA REVOLUCION COMPLETA DEL EJE DEL CRONIZADOR.

LA PORCION SOMBREADA DEL GRAFICO DE BARRAS INDICA LOS TIEMPOS PROPORCIONALES QUE LOS CONTACTOS INTERNOS DEL CRONIZADOR ESTAN CERRADOS.

UNA LEVA GENERADORA DE IMPULSIONES, UBICADA JUNTO A LA LEVA DEL ZUMBADOR Y GIRANDO A 12 REVOLUCIONES POR HORA, PERMITE QUE EL CIRCUITO "X-H" SE CIERRE DURANTE 5 SEGUNDOS (43 SEGUNDOS).

▷ 1 O 2 VECES EN ESTA AREA  
 ▷ 3 A 4 VECES EN ESTA AREA

