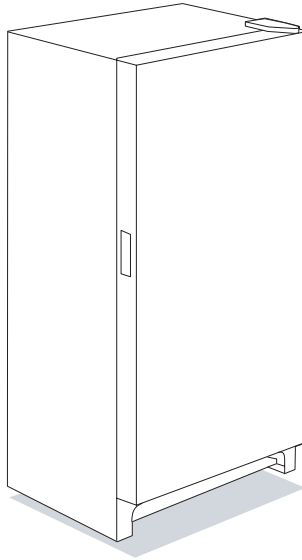


FACTORY PARTS CATALOG FREEZER

MULTIFLEX\UNIVERSAL



PRODUCT NO.	BASE MODEL NO.	SERIES	COLOR	VOLTS
CFU17F3HW0	CFU17F3H	134A	white	115

MARKET

North America

WIRING DIAGRAM - # 216569300
OWNER'S GUIDE - # 216602400
SERVICE DATA SHEET - # 216569300

 **FRIGIDAIRE**
HOME PRODUCTS

101 Masters Blvd.
Anderson, SC 29624

Publication No.

5995320297

990330

-EN/SERVICE /GS
365

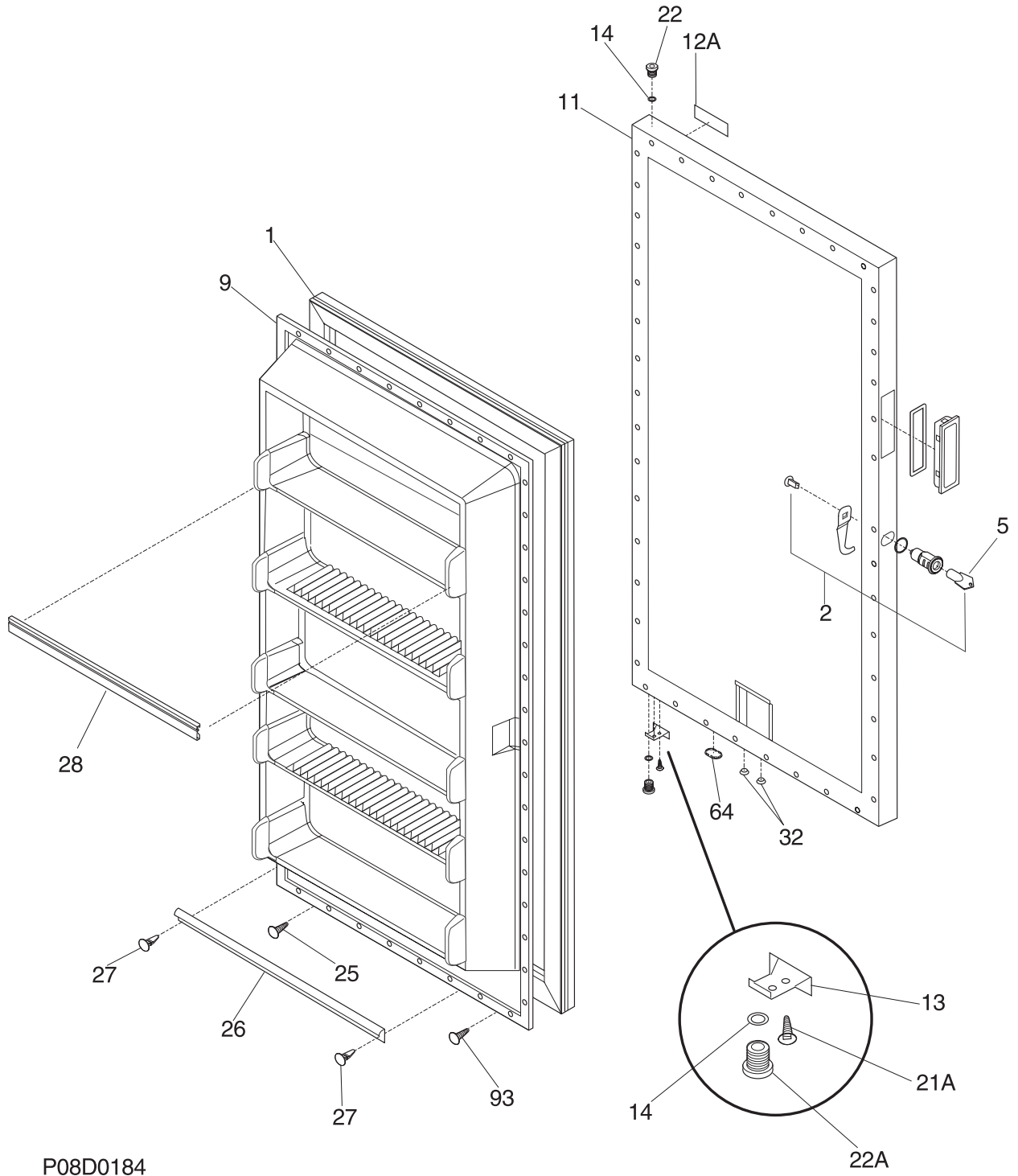
FREEZER

Model No.

CFU17F3HW0

©1999White Consolidated Industries, Inc.
All rights reserved

DOOR

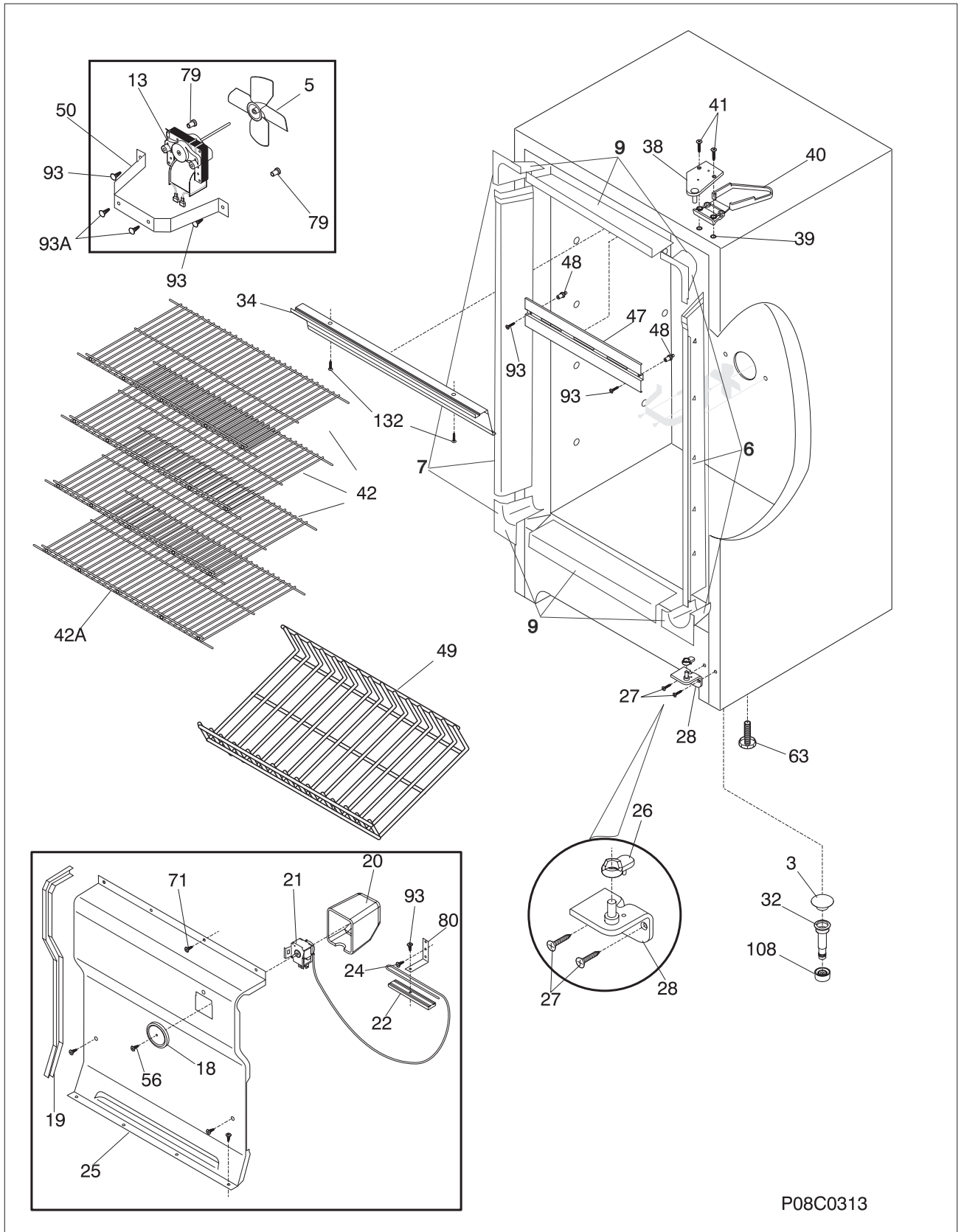


P08D0184

DOOR

POS. NO	PART NO	DESCRIPTION
1	216522309	Gasket-door,white
2 #	5303925107	Lock Assy
5 #	216388700	Key,lock
9	216527803	Panel-inner door,white ,frzr
11	216526501	Panel-outer door,white
12A	216373000	Frame-nameplate
13	08016354	Door Stop
14	5303313518	Washer,sealing
21A	08005520	Screw-door stop mtg,flat hd metric , 4.0 x 0.7-19.7
22	216443600	Bearing
22A	216503200	Bearing-hinge,btm
25	216022800	Screw,washer head ,8-18 X 1/2
26	216524200	Gasket,secondary
27	5303212828	Clip,panel
28	216523102	Rack-shelf,wide ,white
32	5309950074	Valve-breather
64	216403700	Plug-button,base door
93	5303161215	Screw
*	5303925098	Insulation

CABINET

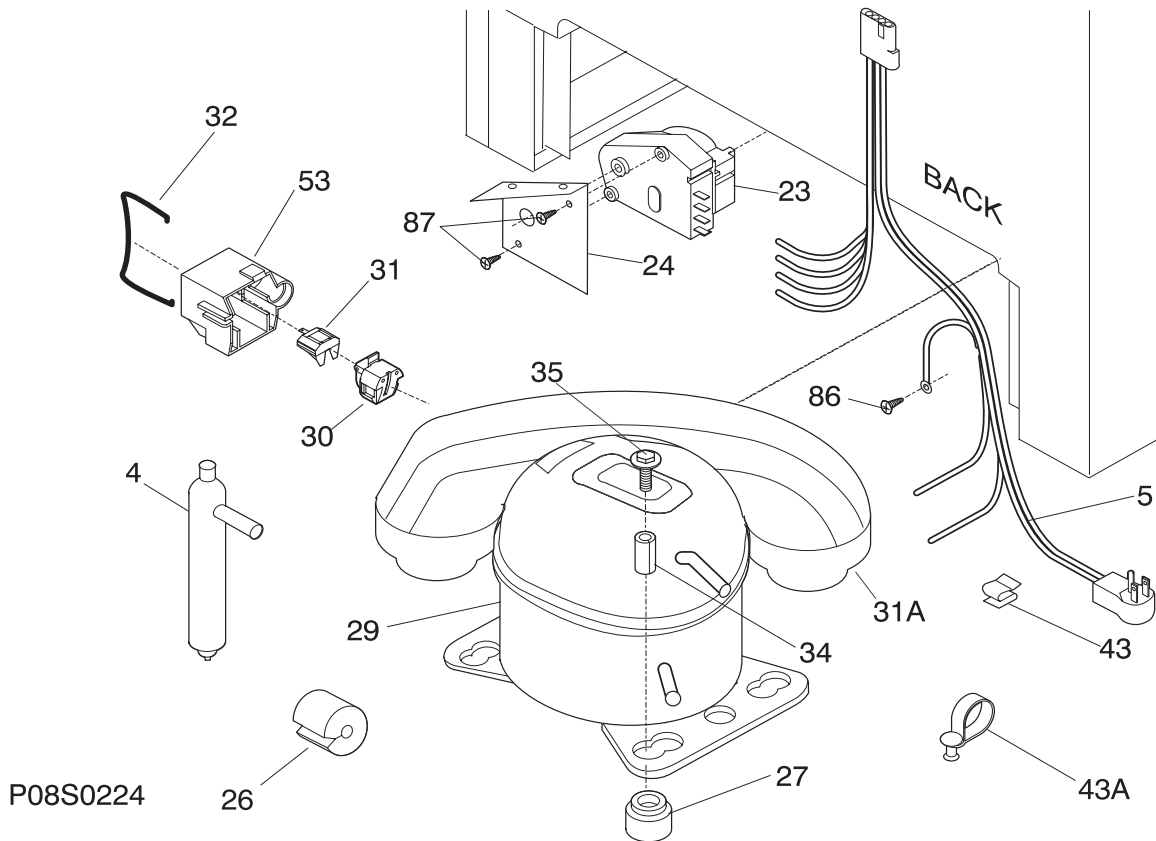
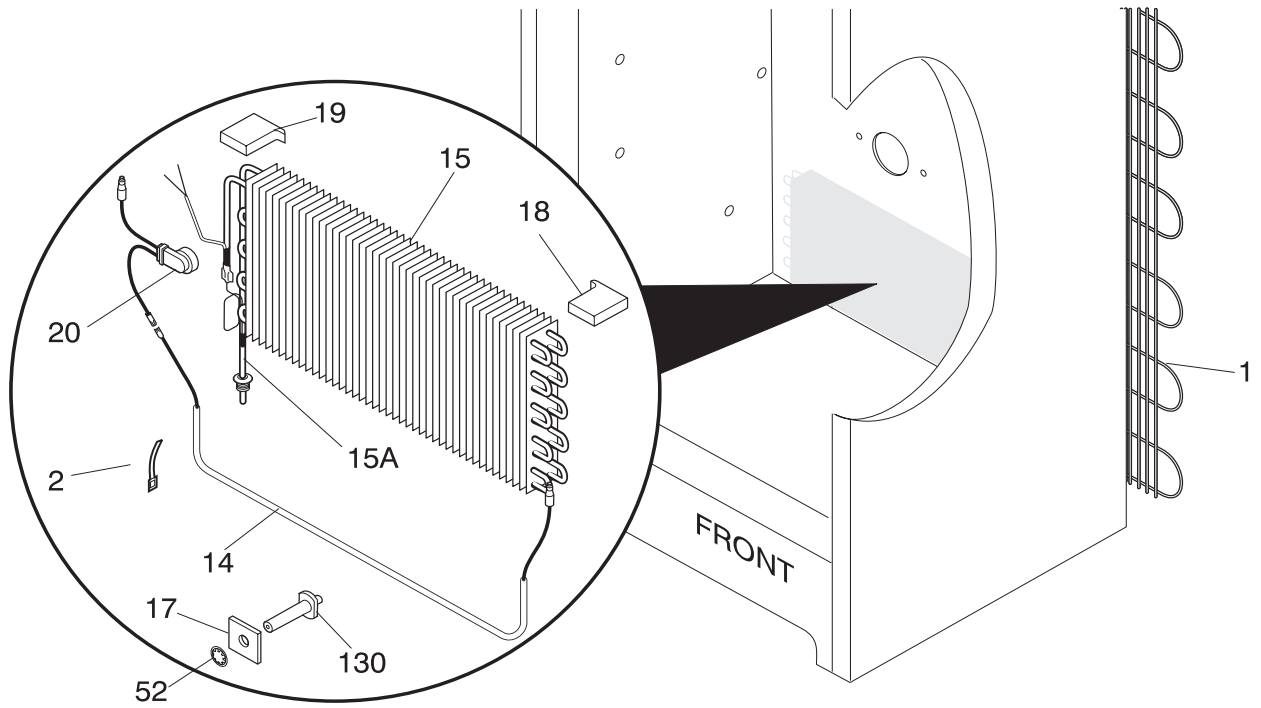


P08C0313

CABINET

POS. NO	PART NO	DESCRIPTION
3	216503100	Screen-drain
5 #	216325600	Fan Blade
6	216604200	Breaker Kit w/corners
7	216603700	Breaker Kit w/corners,lock catch
9	216603300	Breaker Kit w/corners,32" ,top or bottom
13	216570900	Motor-evap fan
18	216591700	Knob-control
19	216511300	Gasket-evap cover
20	216230300	Cover,temp control
21	216521100	Control-temperature
22	05878562	Clamp,cap tube ,cold control
24	5300052943	Screw-clamp,truss hd cr ,control
25	216084100	Cover,evaporator
26	216503300	Ramp,closer ,door
27	5303205738	Screw-hinge,cr ,1/4-20 x 1.000 ,btm
28	216247400	Hinge-bottom
32	5308005500	Drain
34	216557600	Shield-light
38	5303925086	Hinge-upper
39	5303294372	Nut-insert,hinge
40	5303212912	Cover-hinge
41	5303212937	Screw-top hinge
42	216458400	Shelf,14.50x27.88 ,WH
42A	216458200	Shelf,12.50x27.88 ,white
47	5303288233	Baffle-plate
48	08000456	Spacer-baffle plate
49	216278900	Trivet
50	216394000	Bracket-motor mtg fan
56	09950853	Screw-control knob,phillips ,4-40 x 3/8
63	216396900	Foot-adjustable
71	131168200	Screw,8-18 x 0.31
79	3017666	Nut-insert
80	06594601	Bracket,control
93	5303161215	Screw
93A	5303302760	Screw
108	216388600	Trap-drain
132	5303283898	Screw,6-20AB x 3/8
*	09948773	Insulation,drain tube
*	216533300	Wire-ground,fan motor
*	5303305324	Paint,touch-up ,white
*	5303916855	Tube,plastic ,clear ,sensor sleeve
*	5303311565	Clip-cable

SYSTEM



P08S0224

SYSTEM

POS. NO	PART NO	DESCRIPTION
1	5300083897	Condenser
2	5308000110	Strap-evap/heater,aluminum ,(2)
4	216634500	Drier-filter
5 #	216560500	Harness-electrical
14	216608500	Heater-defrost
15 #	216195900	Evaporator
15A#	216385200	Heat Exchanger
17	06599546	Spacer-support,evaporator ,(2)
18	06599531	Insulation Block,RH
19	3017674	Insulation Block,LH
20	5304404743	Thermostat-defrost
23 #	216517400	Timer
24	08016580	Bracket
26	216511900	Spacer tube,(3)
27	216498900	Grommet,compressor
29	216639700	Compressor,Service
30 #	216594300	Starter
31 #	216100115	Overload Protector
31A	5303925444	Pan-drain
32	5303006412	Strap-cover mtg
34	5306594529	Sleeve-compressor
35	5303272328	Screw,Ind hex sems ,1/4-28 unfx ,compressor
43	09950610	Clip,cord
43A	216629700	Clip-harness
52	08013198	Retainer,spacer evap
53	08006982	Cover-terminal
86	216036600	Screw,rwhd (gx-ca) ,8-32 x 1/2
87	08037849	Screw
130	06599544	Support-evaporator