

FQE80U FilterQuick™ easyTouch® Electric Fryer

Parts Manual

This manual is updated as new information and models are released. Visit our website for the latest manual.



Part Number: FRY_P_8197935 09/2022



WELBILT®

NOTICE

IF, DURING THE WARRANTY PERIOD, THE CUSTOMER USES A PART FOR THIS FRYMASTER EQUIPMENT OTHER THAN AN UNMODIFIED NEW OR RECYCLED PART PURCHASED DIRECTLY FROM FRYMASTER, OR ANY OF ITS FACTORY AUTHORIZED SERVICERS, AND/OR THE PART BEING USED IS MODIFIED FROM ITS ORIGINAL CONFIGURATION, THIS WARRANTY WILL BE VOID. FURTHER, FRYMASTER AND ITS AFFILIATES WILL NOT BE LIABLE FOR ANY CLAIMS, DAMAGES OR EXPENSES INCURRED BY THE CUSTOMER WHICH ARISE DIRECTLY OR INDIRECTLY, IN WHOLE OR IN PART, DUE TO THE INSTALLATION OF ANY MODIFIED PART AND/OR PART RECEIVED FROM AN UNAUTHORIZED SERVICER.

FQE80U easyTouch® FILTERQUICK™ SERIES ELECTRIC FRYERS
PARTS MANUAL
TABLE OF CONTENTS

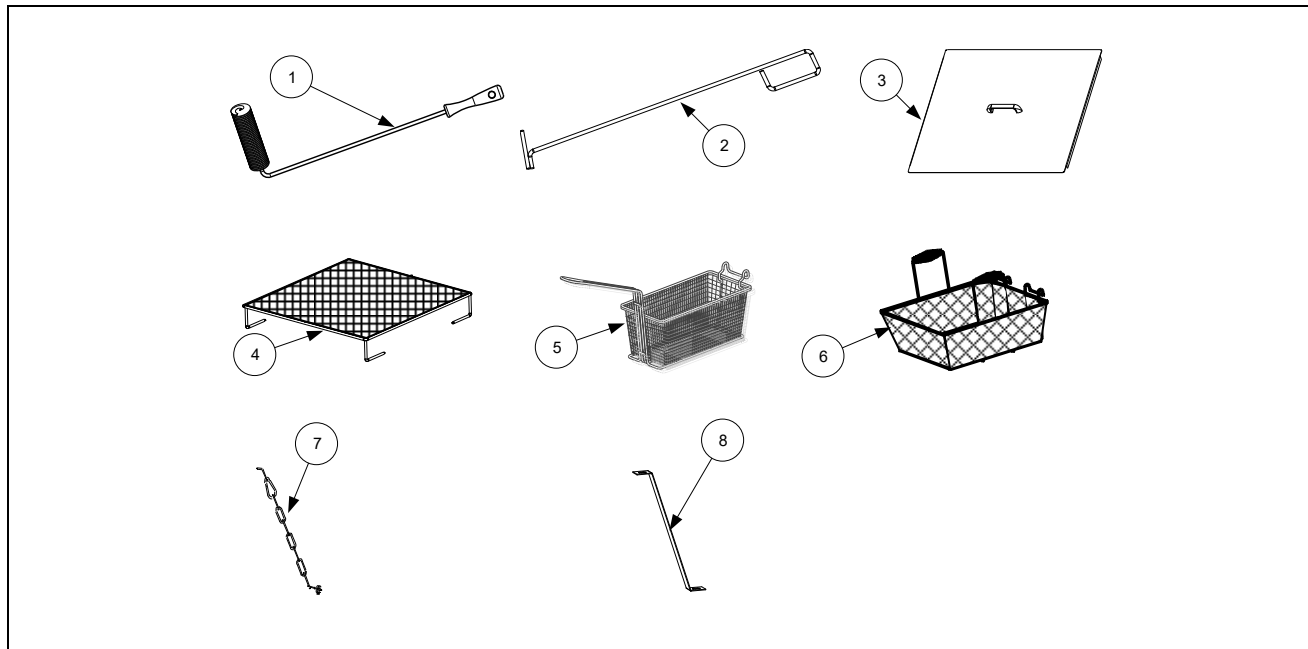
CHAPTER 1: Parts List

1.1	Accessories.....	1-1
1.2	Doors, Sides, Tilt Housings, Top Caps and Casters.....	1-2
1.3	Control Panel Frame Assemblies	1-3
1.4	Drain Tube Sections and Associated Parts	1-4
1.5	Electronics and Wiring Components	1-5
1.5.1	Component Boxes and Associated Components	1-5
1.5.2	Contactor Boxes	1-6
1.5.3	Heating Element Assemblies and Associated Parts	1-7
1.5.3.1	Element Assemblies and Hardware	1-7
1.5.3.2	Element Tube Assemblies	1-8
1.5.4	VIB (Valve Interface Board) Components.....	1-9
1.5.5	Power Reset Switch and USB Connector	1-9
1.5.6	Wiring.....	1-10
1.5.6.1	Contactor Box Wiring Assemblies 12-Pin C-1	1-10
1.5.6.2	Contactor Box Wiring Assemblies 6-Pin Left Element	1-10
1.5.6.3	Contactor Box Wiring Assemblies 9-Pin Right Element.....	1-10
1.5.6.4	Main Wiring Harness.....	1-11
1.5.6.5	Component Box Wiring Harness	1-12
1.5.6.6	FIB (Filter Interface Board) Wiring Harness.....	1-12
1.5.6.7	Wiring Harness Dispose, Pan Switch, Bulk.....	1-13
1.5.6.8	Cord Sets and Basket Lift Harness	1-13
1.6	Frypots and Associated Components.....	1-14
1.6.1	Frypot Components	1-14
1.7	Oil Return Manifolds	1-15
1.8	Filtration System Components	1-16
1.8.1	Filter Pan and Accessories	1-16
1.8.2	Filter Pump and Accessories.....	1-17
1.9	Bulk Oil System Components	1-18
1.9.1	Bulk Oil Dispose Waste Valve	1-18
1.9.2	Bulk Connection – Front.....	1-19
1.10	Basket Lift Assembly and Associated Parts	1-20
1.11	FilterQuick™ FQE80U-T Series Wiring.....	1-22

FQE80U easyTouch® FILTERQUICK™ SERIES ELECTRIC FRYERS

PARTS LIST

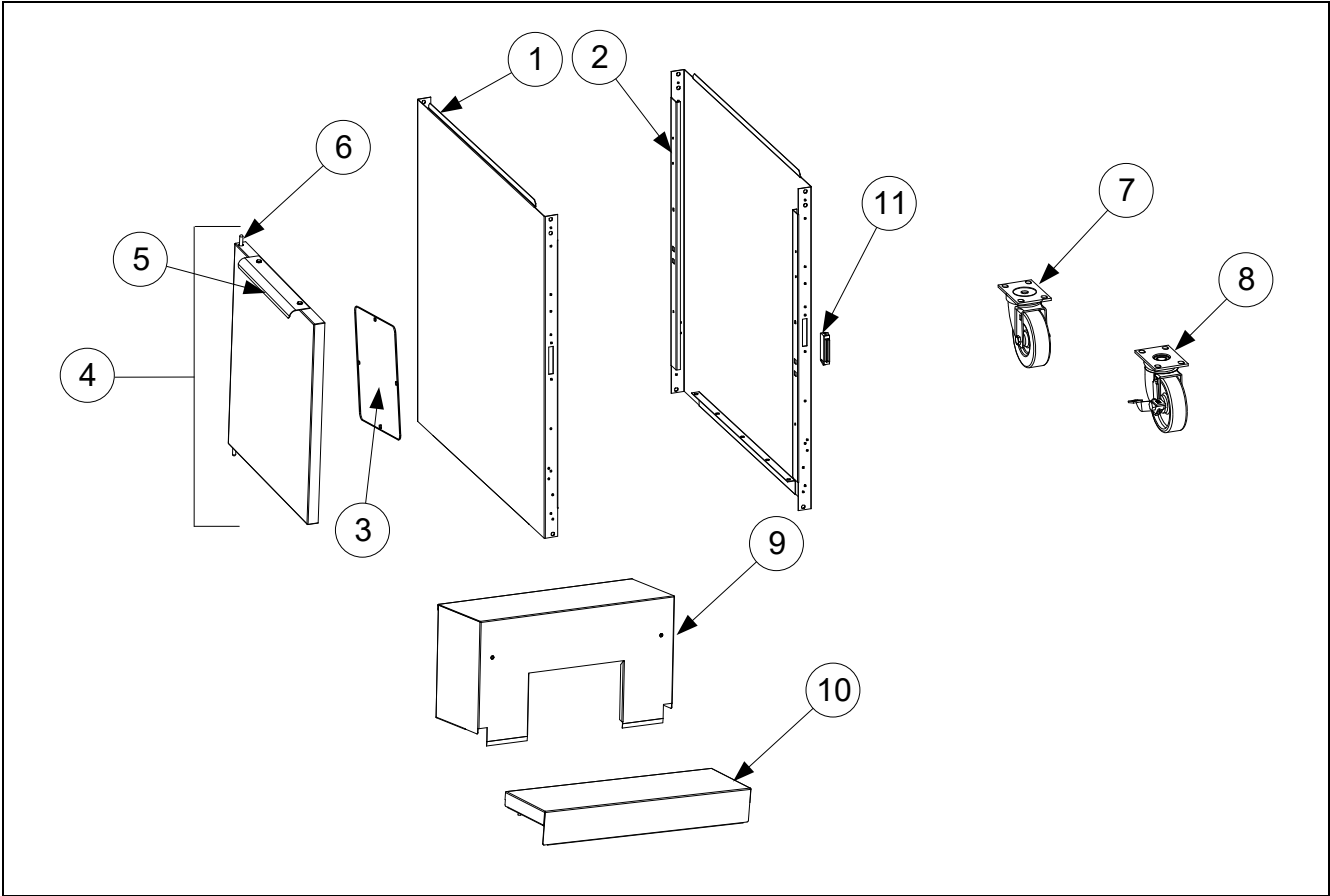
1.1 Accessories



ITEM	PART #	COMPONENT
1	8030278	BRUSH, FRYPOT
2	8030388	FRYERS FRIEND
3	1080220	COVER, FRYPOT
4	8030387	GRID, BASKET SUPPORT
5	8030306	BASKET, 15-7/8" X 7-11/16" X 6-1/8"
6	8030148	BASKET, FP-TCF (W/HANDLES) FULL, 16.75" X 17.50" X 5.89"
7	8260900	KIT, CHAIN RESTRAINT
8	8261095	KIT, ANCHOR STRAP
*	8030002	POWDER, FILTER (80- 1-CUP APPLICATIONS)
*	8030345	PACK, 100-SHEET FILTER PAPER 17" X 33.25"

* Not illustrated.

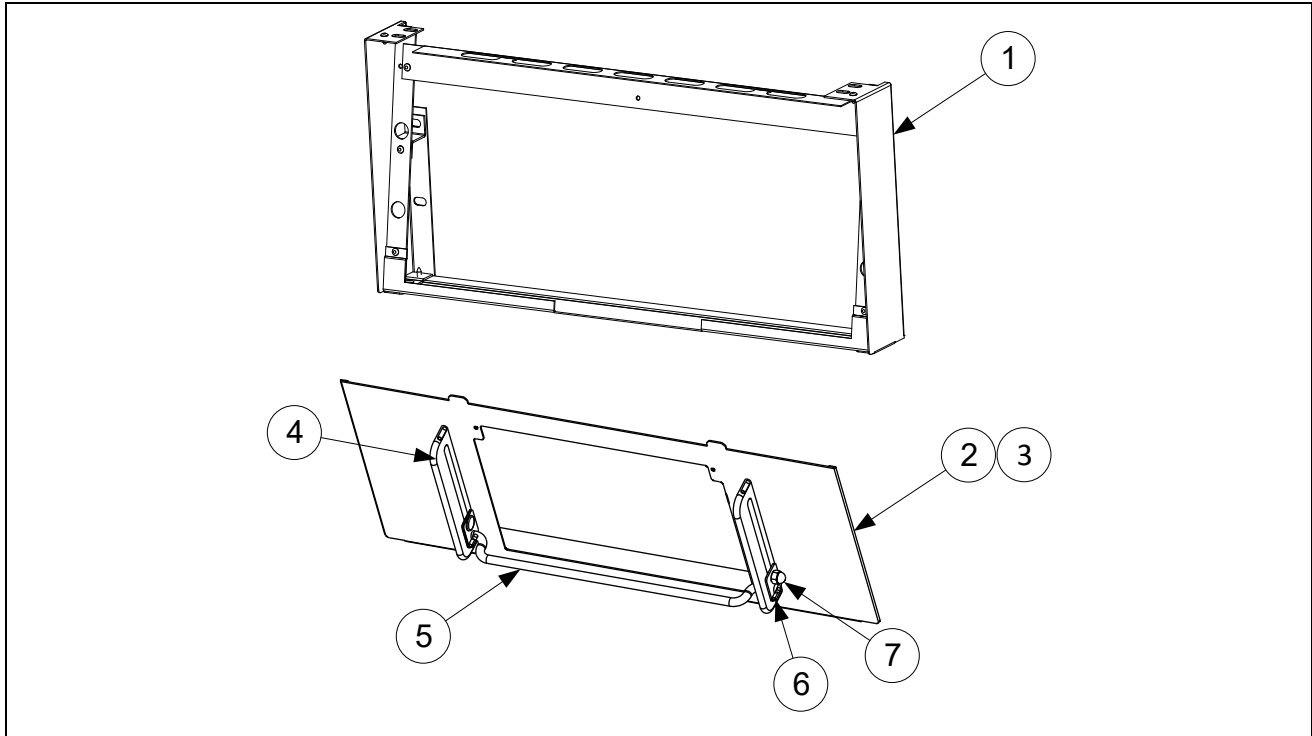
1.2 Doors, Sides, Tilt Housings, Top Caps and Casters



ITEM	PART #	COMPONENT
1	2602465	SIDE, CABINET LEFT
2	2602466	SIDE, CABINET RIGHT
3	2601622	COVER, CABINET SIDE HOLE
4	1064309	DOOR
5	2108077	HANDLE, DOOR
6	1064067	PIN ASSEMBLY, DOOR
*	8100275	SPRING, DOOR PIN
*	8100658	RETAINING RING
*	8104916	CLIP, PANEL U-SHAPED W/BARBS
*	2307192	HINGE, DOOR LOWER
7	8261117	CASTER ASSEMBLY, REAR, 5" WHEEL W/O BRAKE
8	8261118	CASTER ASSEMBLY, FRONT 5" WITH BRAKE
9	8237019	TILT HOUSING
10	1083141	TOP CAP
11	8102346	MAGNET, DOOR

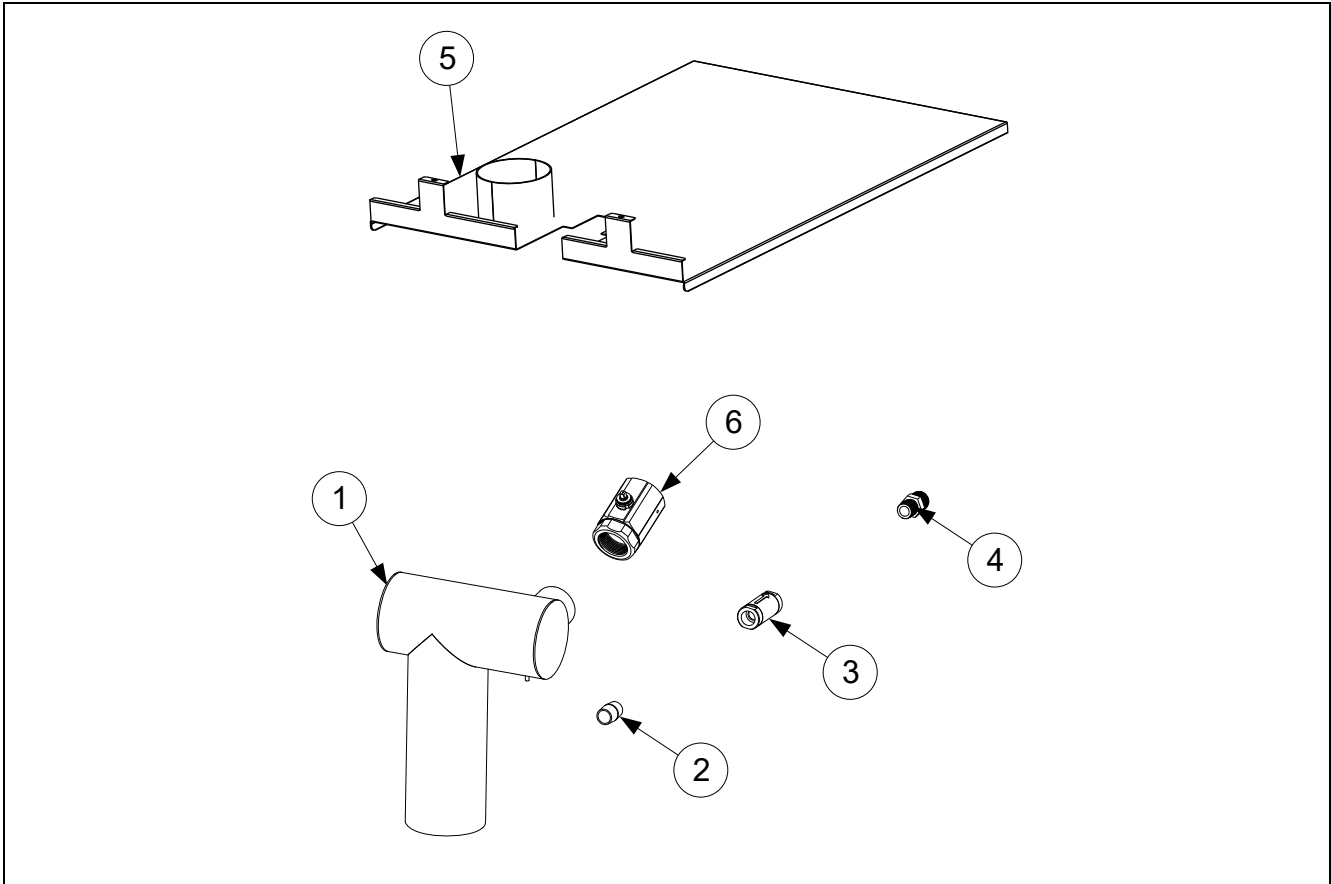
* Not illustrated.

1.3 Control Panel Frame Assemblies



ITEM	PART #	COMPONENT
1	1087819	FRAME ASSEMBLY, CONTROL
2	1088358	BEZEL ASSEMBLY, CONTROL FQ60
3	2602074	BEZEL, 1814 SINGLE TOUCHSCREEN
4	8104898	GUIDE, UIB ADJUSTABLE GUARD
5	8104899	BAR, GUARD (TOUCH SCREEN PROTECTION)
6	2602539	PLATE, OUTSIDE TIGHTENING
7	8090047	NUT, CAP ¼-20

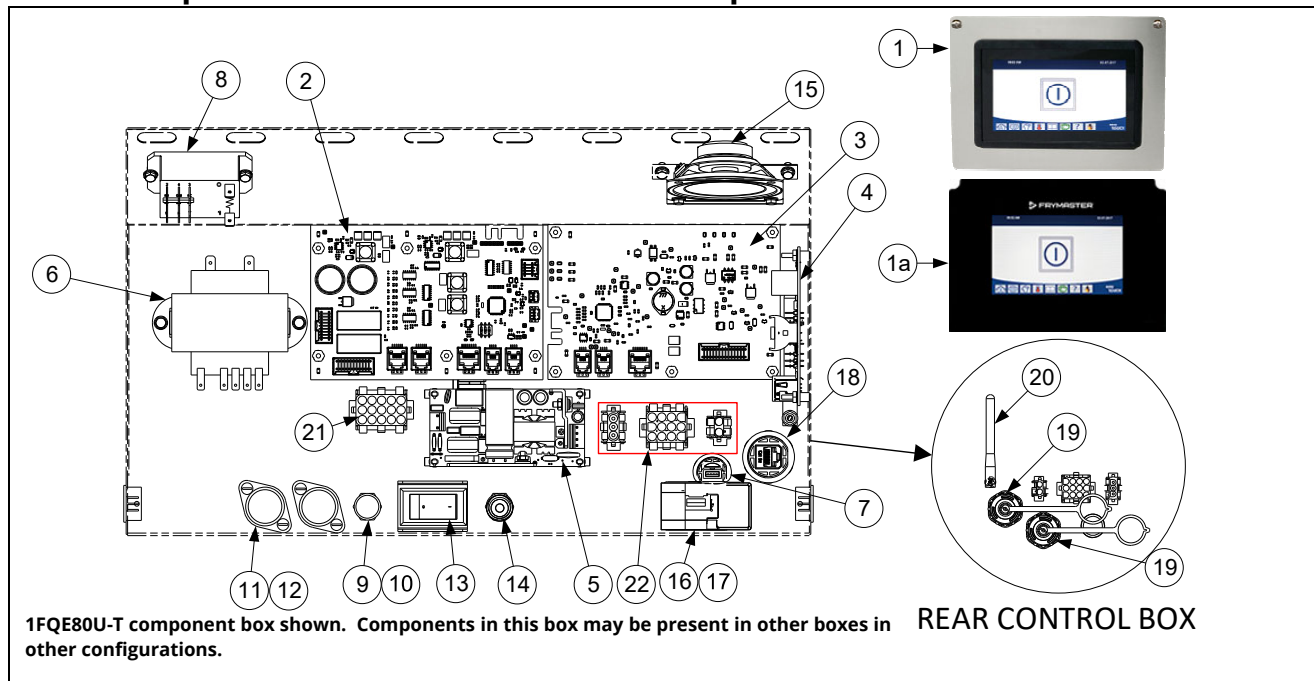
1.4 Drain Tube Sections and Associated Parts



ITEM	PART #	COMPONENT
1	8239580	TUBE, DRAIN DUMP DOWNSPOUT
2	8130022	NIPPLE, 1/2" X CLOSE NPT
3	8105084	VALVE, 20-PSI CHECK STRATAFLO
4	8101668	ADAPTOR, MALE 5/8" OD X 1/2"
5	8239637	LID W/A, FQE80 FILTER PAN
6	8103798	VALVE, DRAIN 1 1/2" NPT
*	8160544	O-RING SEAL - DRAIN VALVE

1.5 Electronics and Electrical Components

1.5.1 Component Boxes and Associated Components

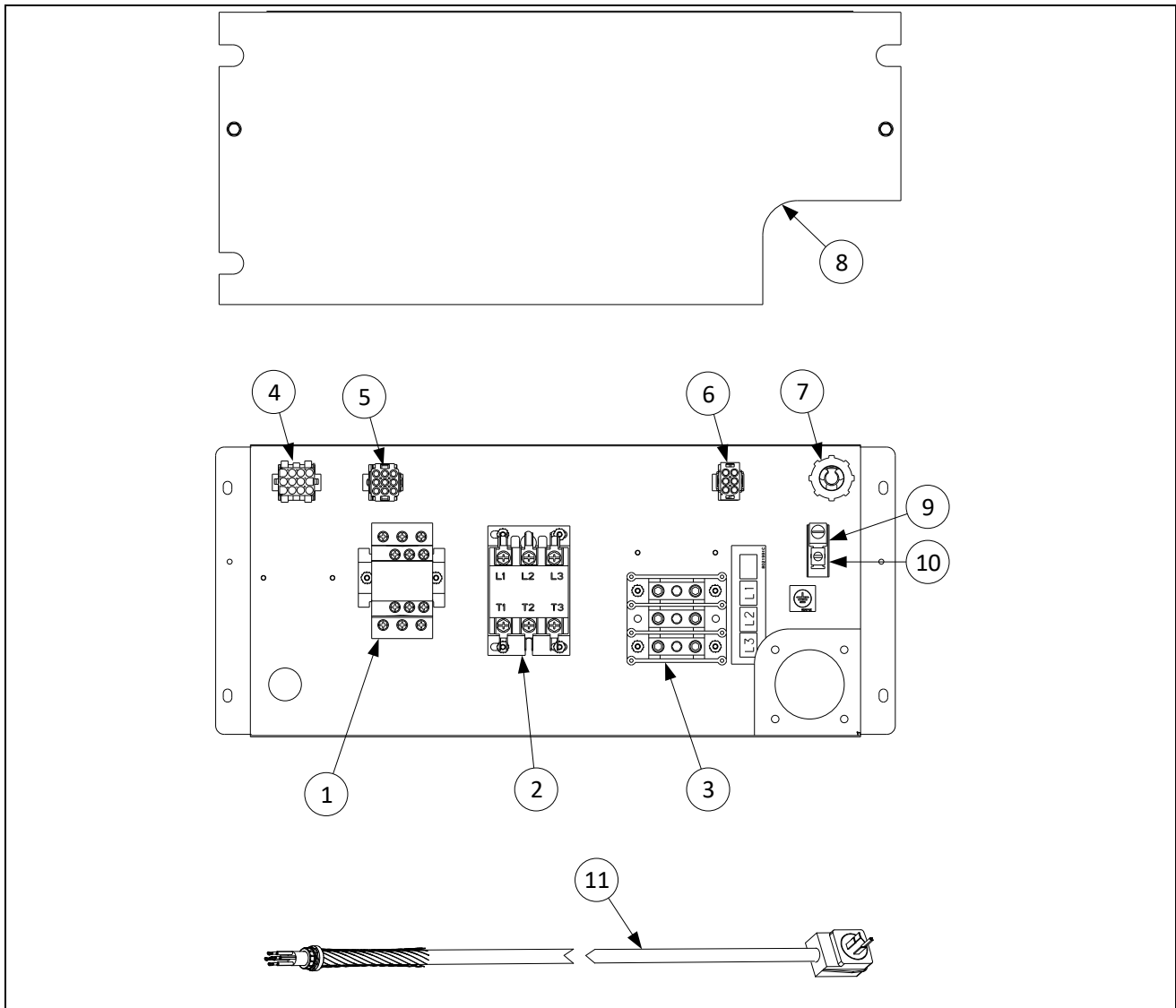


ITEM	PART #	COMPONENT
√ 1	8263748	CONTROLLER, COMMON UI KIT (FOR FRYERS MANUFACTURED FROM 09/2022 TO PRESENT)
√ 1a	1088861SP	CONTROLLER, FQ4000 7-11 (for fryers manufactured prior to 09/2022)
*	8105076	LANYARD, CONTROLLER RESTRAINT
√ 2	1087511SP	BOARD, INTERFACE SIB (SMART INTERFACE BOARD)
√ 3	1089023SP	BOARD, FIB W/ SOFTWARE 7-11
4	8076148	BOARD, FQ4000 KCCM (SUI)
√ 5	8263684	POWER SUPPLY, 24VDC 130W ATO
√ 6	8075362	TRANSFORMER, 115-240V 80VA 24VAC (SIB)
√ 7	8075969	CABLE, USB TYPR-A RECPT PNL MNT
√ 8	8074482	RELAY, DPDT 30A 24VDC (FILTER PUMP)
√ 9	8071321	FUSE HOLDER
10	8075570	FUSE 3.5A 250V
√ 11	8070922	HOLDER, BUSS FUSE HPS
√ 12	8072278	FUSE, 20 AMP
√ 13	8074036	SWITCH, UHC-P TIG SERIES
14	8074678	SWITCH, MOMENTARY (TOPOFF OIL RESET BUTTON) (ATO UNITS ONLY)
15	8075829	SPEAKER 4 OHM
16	8074989	BEZEL, USB PORT (KCCM USB)
17	2207520	PLATE, BACKING USB BEZEL UHCHD
18	8075967	COUPLER, 8P8C TO 8P8C
19	8075970	CAP, DUST
20	8075975	ANTENNA
21	8075951	HARNESS, FV JLOV ELEC CONTROLS (SIB J1 TO J4 IN CONTROL BOX)
22	8076419	HARNESS, FQE60 FIB/BULK/ATO (FIB J1 TO 12-PIN BULK, 3-PIN ATO PUMP, 2-PIN FILTER ON CONTACTS)
		SEE WIRING DIAGRAM ON LAST PAGE.
*	8075555	CABLE, P-BUS W/ POWER SIB (J10) TO VIB (VALVE INTERFACE BOARD) (J2)
*	8075549	CABLE, C-BUS SIB (J7) TO FIB (FILTRATION INTERFACE BOARD) (J3) VAT #1
*	8076225	CABLE, U. FL TO RP-SMA BULKHEAD (CONNECTS KCCM (SUI) TO ANTENNA 8075975 (ITEM 20))
*	8075977	CABLE, RJ45 OVERMOLD CAT5E 0.2MM (CONNECTS KCCM (SUI) RJ45 TO 8075967 (ITEM 18))
*	8074990	CABLE, USB UHCHD (CONNECTS KCCM (SUI) USB TO 8074989 (ITEM 16))

ITEM	PART #	COMPONENT
*	8076106	ADAPTER, RJ11 CAN SIB (J8) TO LEGACY 6-PIN CAN (MICRO MATE & LOCK) (OQS SENSOR TO SIB J8)
*	8074552	TERMINATOR, CAN (ONLY USED ON OQS HARNESS Y- ADAPTOR)
*	8075632	TERMINATOR, CAN END COMMUNICATION RJ11 (USED IN SIB J8 IF OQS IS NOT INSTALLED)
*	8076241	HARNESS, 130W/24VDC PWR SUPPLY SUI BOARD PWR/COM (WAGOS & PWR SUPPLY)
*	8076242	HARNESS, DATALINK PWR/COM (POWER SUPPLY TO KCCM (SUI) BOARD)
*	8076315	CABLE, XL VIB ACTUATOR POWER (FIB J2 TO VIB J4)
*	8075810	CABLE, VIB ACTUATOR POWER (USED FROM VIB (J3) TO VIB (J4))
*	8074154	CONNECTOR, 5-WIRE SNAP
*	8074056	CONNECTOR, 3-WIRE SNAP
*	WIR1248	WIRES, FQE80U CONTROL BOX

* Not illustrated. ✓ Recommended parts.

1.5.2 Contactor Box Boxes



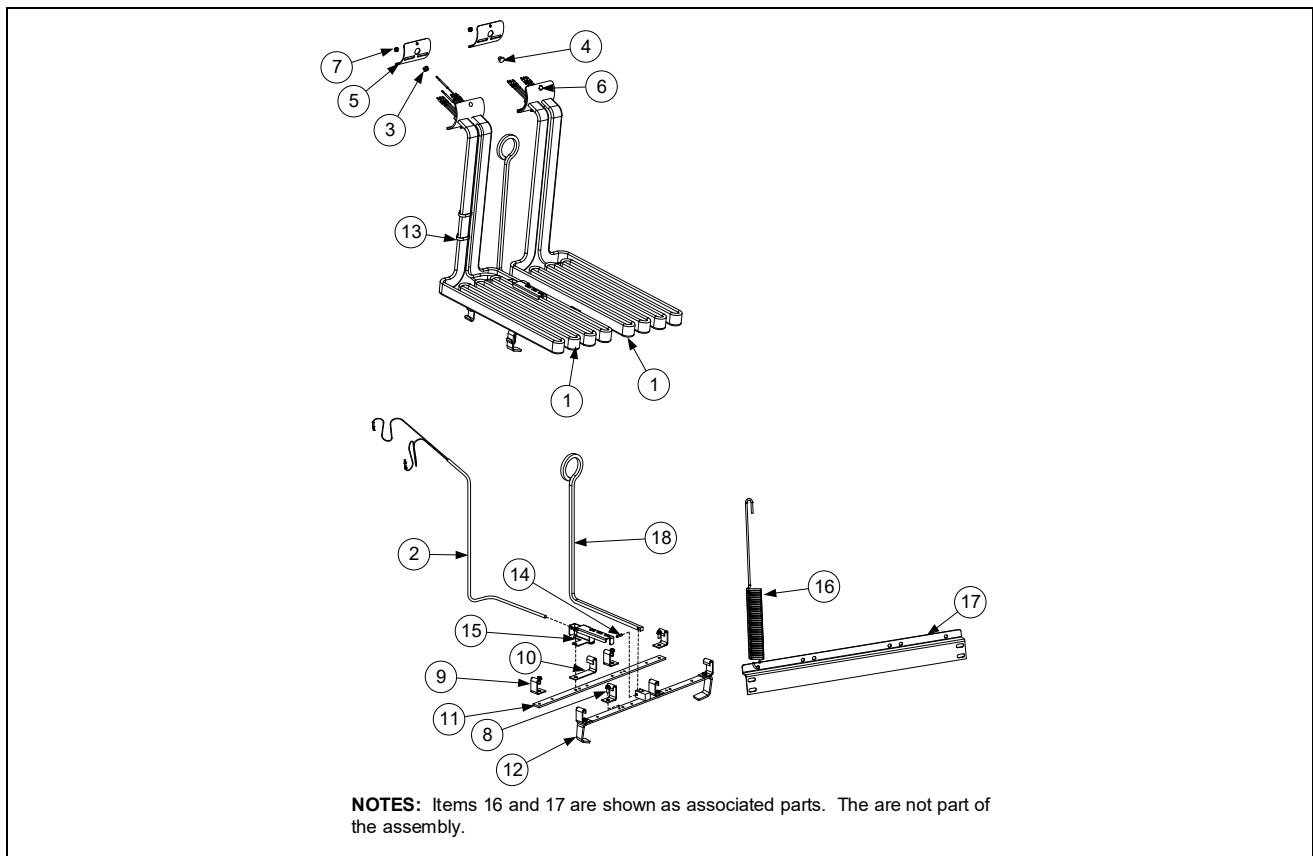
ITEM	PART #	COMPONENT
	1088567	BOX, CONTACTOR ASSEMBLY
✓ 1	8076169	CONTACTOR, 24V COIL 50 AMP MECHANICAL (HEAT)
✓ 2	8101202	CONTACTOR, 24V 40 AMP MECHANICAL (LATCH)

ITEM	PART #	COMPONENT
3	8073610	BLOCK, DEAN TERMINAL 1501-AL-9CU
4	1087516SP	HARNESS ASSY, CONTACTOR BOX CONTROL
5	1082440	HARNESS ASSY, RE80 PBI CONTACTOR BOX 9 PIN
6	1082439	HARNESS ASSY, RE80 PBI CONTACTOR BOX 6 PIN
7	1088566	HARNESS ASSY, 208/240V CONTACTOR BOX POWER FQ80E
8	2207832	COVER, FPRE180 17KW CONTACTOR
9	8070070	TERMINAL, GROUND LUG
10	2006809	BRACKET, GROUND LUG HOLDER
11	8074658	CORD SET, 4 GAUGE, 4 WIRE 3 PHASE WITH STRAIN RELIEF
*	WIR0901	WIRE ASSY, CNTCR 1721 W/O FUSE
*	WIR1176	WIRE ASSY, RE FV LATCH/HEAT JMP

* Not illustrated. ✓ Recommended parts.

1.5.3 Heating Element Assemblies and Associated Parts

1.5.3.1 Element Assemblies and Hardware

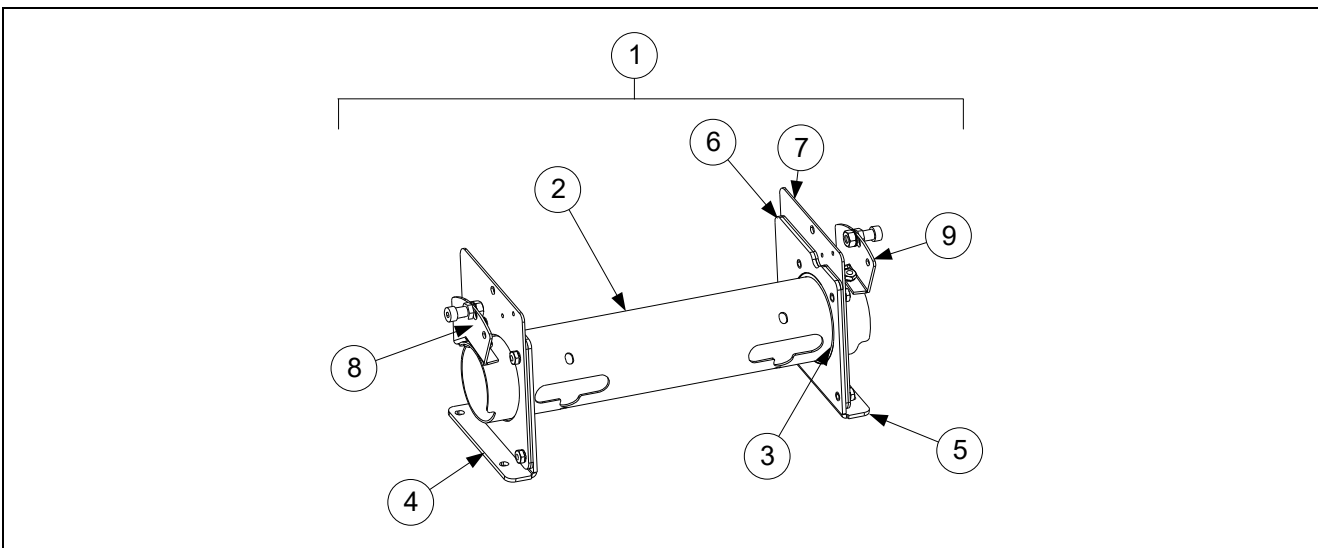


ITEM	PART #	COMPONENT
1		ELEMENT KITS – INCLUDES GASKETS, GROMMETS, TIE WRAPS, SCREWS AND NUTS.
	8262557	208V 8.5 KW
	8262707	230V 8.5 KW
	8262558	240V 8.5KW
	8263020	480V 8.5KW
✓ 2	8263670	PROBE, TEMPERATURE FQE80 – INCLUDES TIE WRAPS AND GROMMET.
3	8160681	GROMMET, PROBE
4	8160480	PLUG, .375-INCH DOME
5	8160688	GASKET, ELEMENT
6	8091003	SCREW, 10-32 X 3/8-INCH HEX HEAD SS
7	8090766	NUT, 10-32 KEPS HEX HEAD SS
*	2304028	WRENCH, ELEMENT TUBE NUT SPANNER

ITEM	PART #	COMPONENT
8	8090518	SCREW, 8-32 X 3/8-INCH SLOTTED HEX HEAD
9	9102042	CLAMP, ELEMENT (SHORT)
10	2300781	CLAMP, ELEMENT (LONG)
11	2304902	BRACKET, ELEMENT MOUNT FLAT FV
12	8236937	BRACKET, ELEMENT 1721 RE
13	8090567	TIE-WRAP, METAL
14	8101212	PIN, .125 X .50-INCH SLOTTED
15	2303714	BRACKET, TEMPERATURE PROBE 8.5 KW (17KW)
16	8103030	SPRING, ELEMENT LIFT LEFT
	8103031	SPRING, ELEMENT LIFT RIGHT
17	2204860	BRACKET, LOWER SPRING
18	8102189	HANDLE, ELEMENT LIFT

√ Recommended parts *Not illustrated

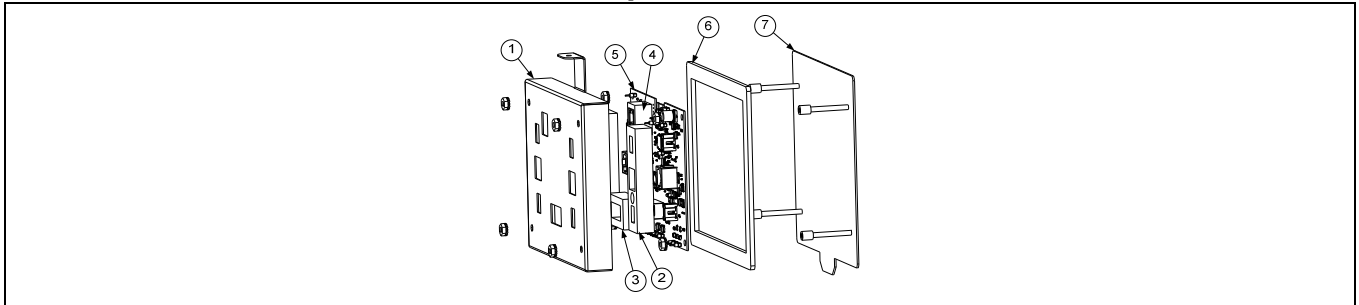
1.5.3.2 Element Tube Assemblies



ITEM	PART #	COMPONENT
1	1080297	TUBE ASSEMBLY, FULL-VAT 14 KW
2	8102992	TUBE, FULL VAT ELEMENT MOUNTING
3	8102993	BUSHING, TUBE END TEFLON
4	1080315	BRACKET ASSEMBLY, LH ELEMENT TUBE SUPPORT
5	1080316	BRACKET ASSEMBLY, RH ELEMENT TUBE SUPPORT
6	2200122	PLATE, ELEMENT TUBE SUPPORT INNER
7	2200123	PLATE, ELEMENT TUBE SUPPORT OUTER
8	1067651	BRACKET ASSEMBLY, LH UPPER SPRING
9	1067652	BRACKET ASSEMBLY, RH UPPER SPRING
*	8262598	KIT, TILT SWITCH
*	8074742	SWITCH, LONG LEVER HIGH TEMP

* Not illustrated

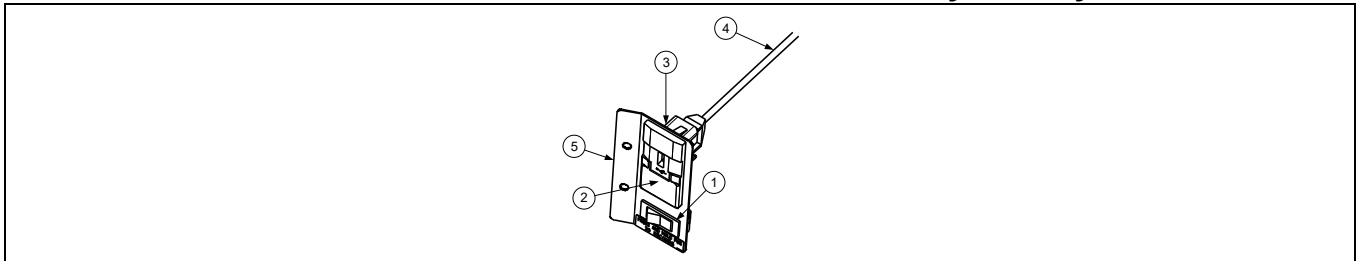
1.5.4 VIB (Valve Interface Board) Components



ITEM	PART #	COMPONENT
√	1087514SP	VIB BOARD ASSEMBLY
1	8242346	COVER, VIB BOARD HOUSING
2	8161015	GASKET, ACTUATOR POWER VIB
3	8161013	GASKET, 20 PIN VIB CONNECTOR
4	8161014	GASKET, P-BUS VIB CONNECTOR
5	1087512SP	BOARD, VIB WITH SW
6	8160820	SEAL, LINEAR ACTUATOR BOARD
7	1087280	PANEL, ASSY VIB BOX BOTTOM STUD
*	8076315	CABLE, XL VIB ACTUATOR POWER (FROM FIB (J2) TO VIB BOARD (J4))
*	8075810	CABLE, VIB ACTUATOR POWER (USED FROM VIB (J3) TO VIB (J4))

√ Recommended parts. * Not illustrated

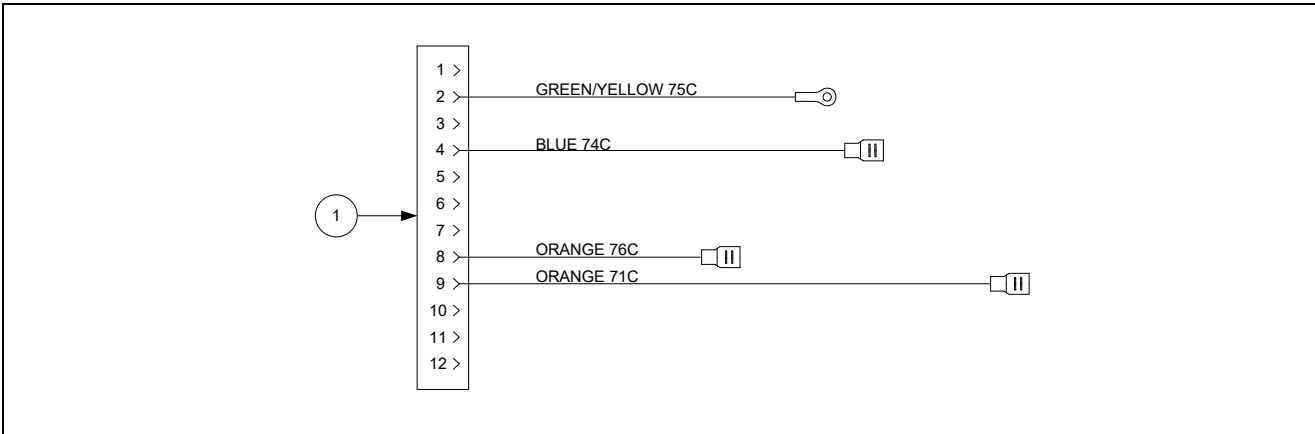
1.5.5 Power Reset Switch and USB Connector (Multi-Vat fryers only)



ITEM	PART #	COMPONENT
	1087802	BRACKET ASSY, USB MOUNTING
1	8072659	SWITCH, MOMENTARY (POWER RESET) (USED WITH RESET HARNESS 1088233)
2	8074989	BEZEL, USB PORT
3	2207520	PLATE, BACKING USB BEZEL
4	8074990	CABLE, USB
5	2602065	BRACKET, FQ4000 USB/RESET

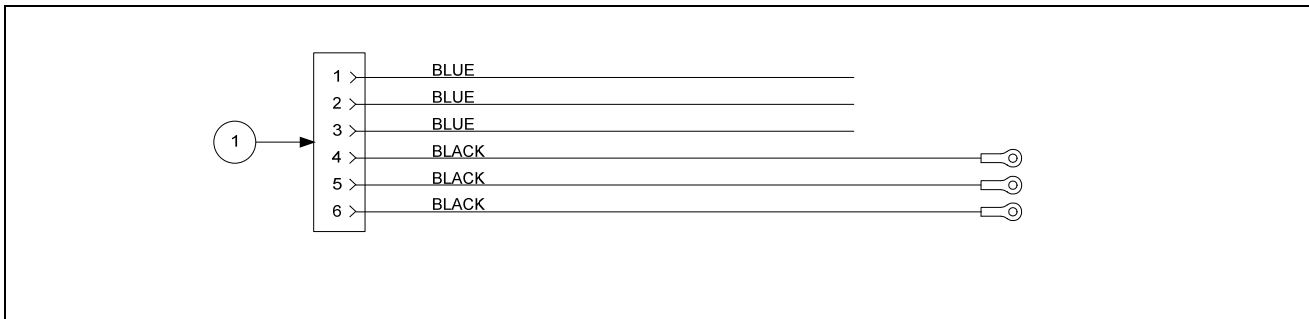
1.5.6 Wiring

1.5.6.1 Contactor Box Wiring Assemblies - 12-Pin C-1



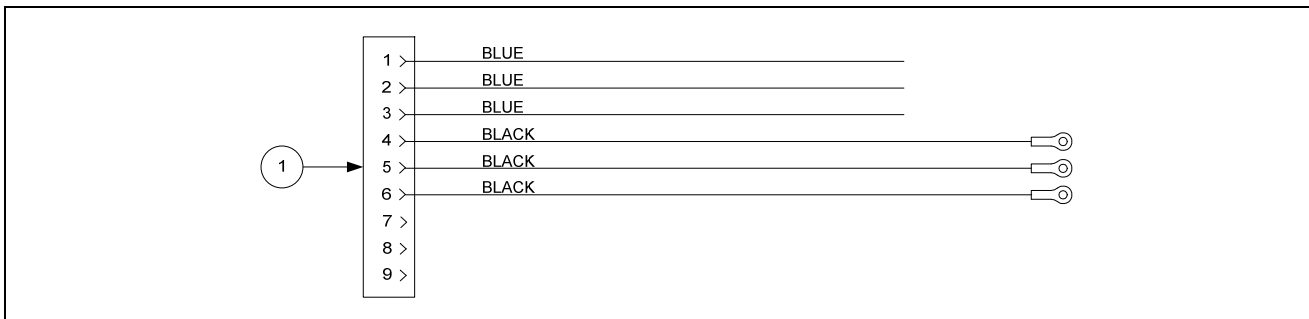
ITEM	PART #	COMPONENT
1	1087516SP	CONTACTOR BOX HARNESS ASSEMBLY FULL VAT
	1080159SP	CONTACTOR BOX HARNESS ASSEMBLY FULL VAT

1.5.6.2 Contactor Box Wiring Assembly - 6-Pin (Left Element)



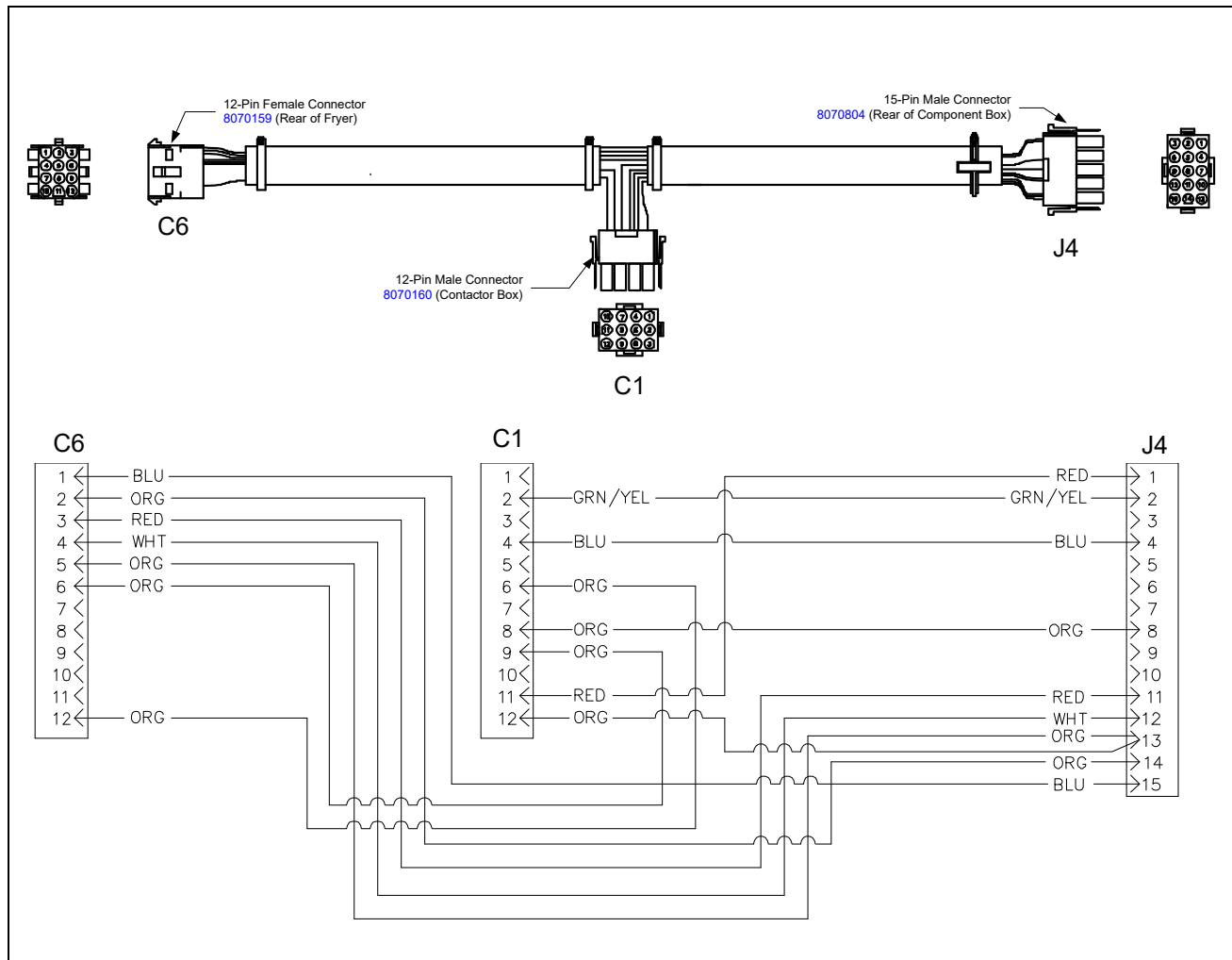
ITEM	PART #	COMPONENT
1	1082439SP	14/17 KW MECHANICAL CONTACTOR

1.5.6.3 Contactor Box Wiring Assembly - 9-Pin (Right Element)



ITEM	PART #	COMPONENT
1	1082440SP	14/17 KW MECHANICAL CONTACTOR

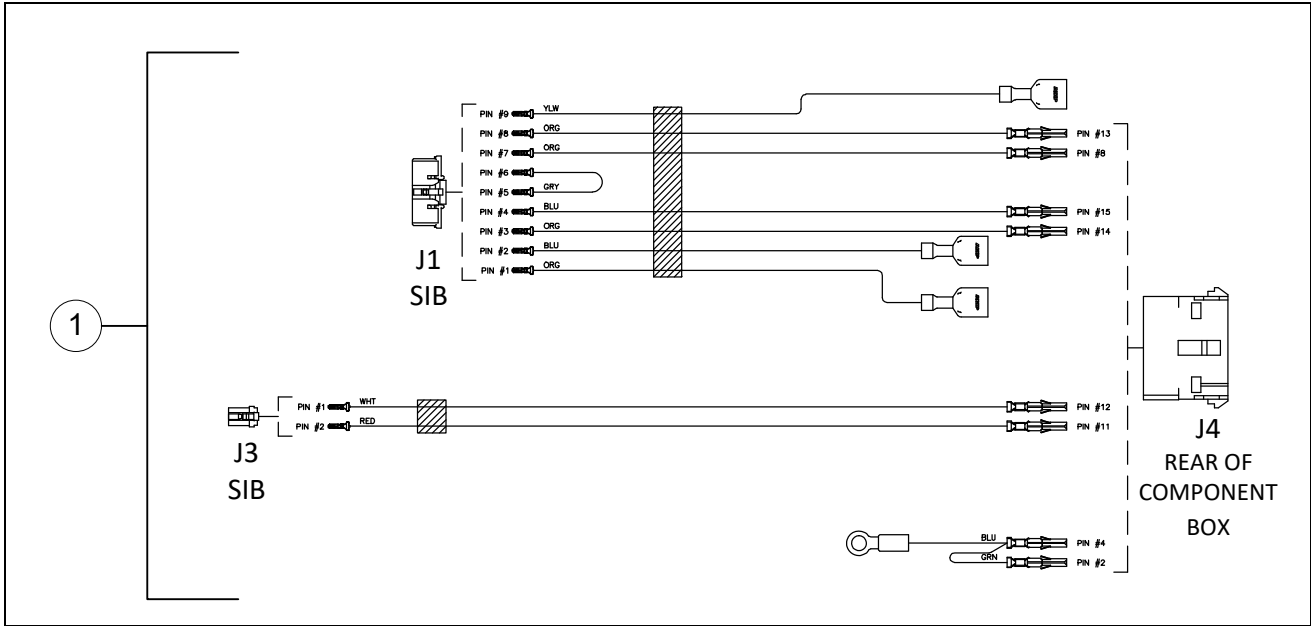
1.5.6.4 Main Wiring Harnesses



ITEM	PART #	COMPONENT
1	8076464	FULL VAT MAIN WIRING HARNESSFQ80E J4 TO C1 AND C6

See the wiring diagram on last page.

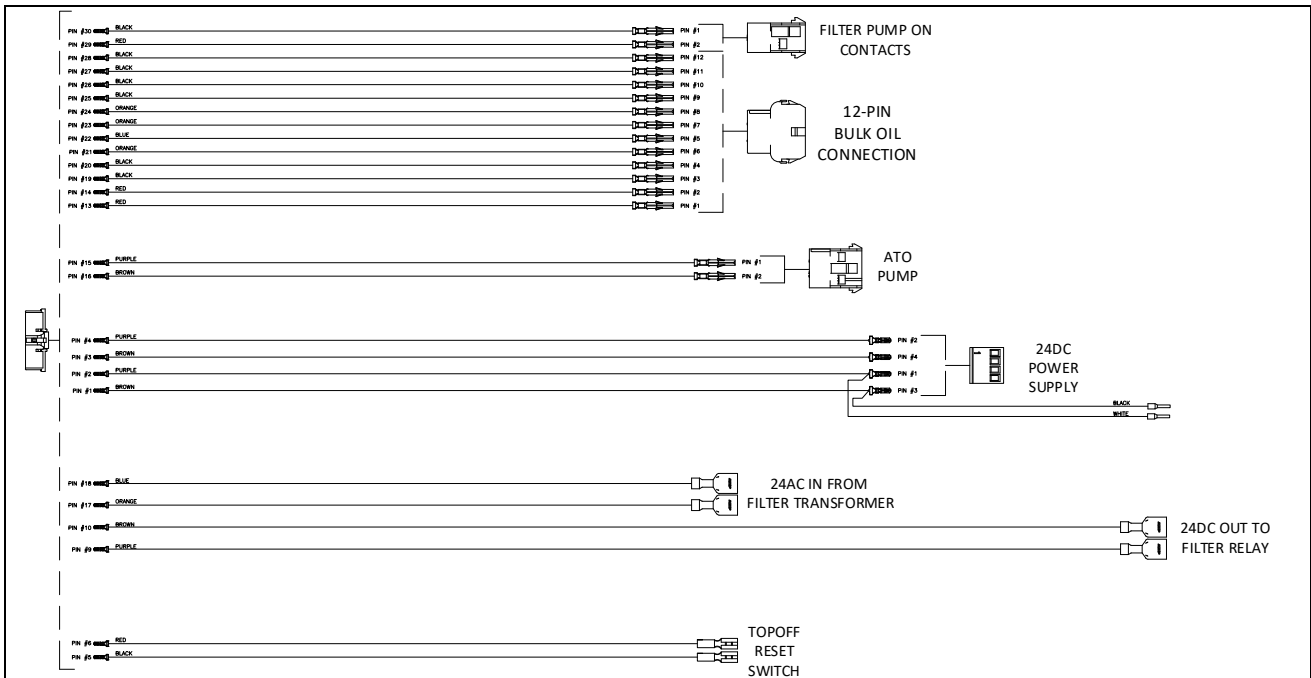
1.5.6.5 Component Box Wiring Harnesses



ITEM	PART #	COMPONENT
1	8075951	FULL VAT CONTROL HARNESS J4 TO J1 AND J3

See the wiring diagram on last page.

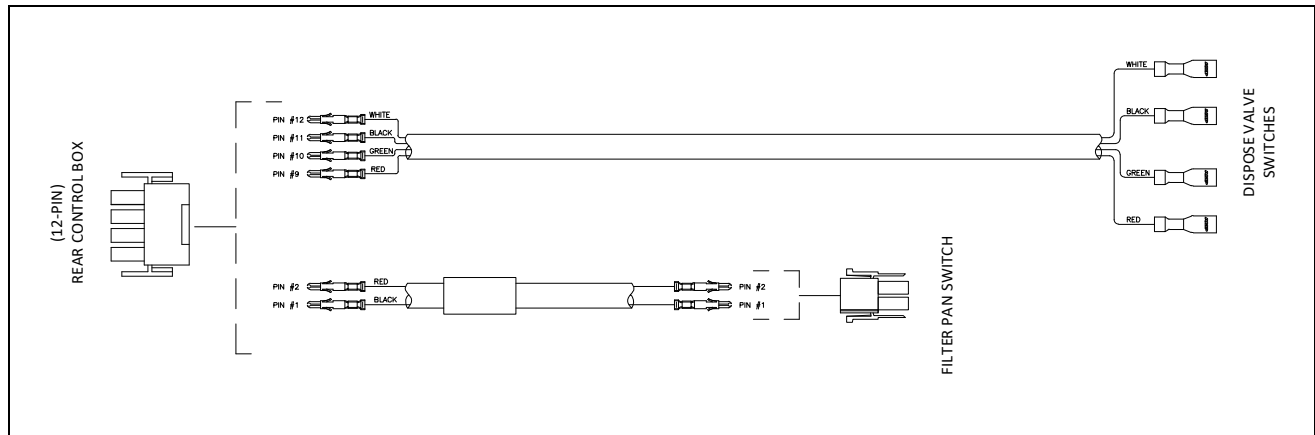
1.5.6.6 FIB (Filter Interface Board) Wiring Harness



ITEM	PART #	COMPONENT
1	8076419	HARNESS, FIB/BULK/ATO

See the wiring diagram on last page.

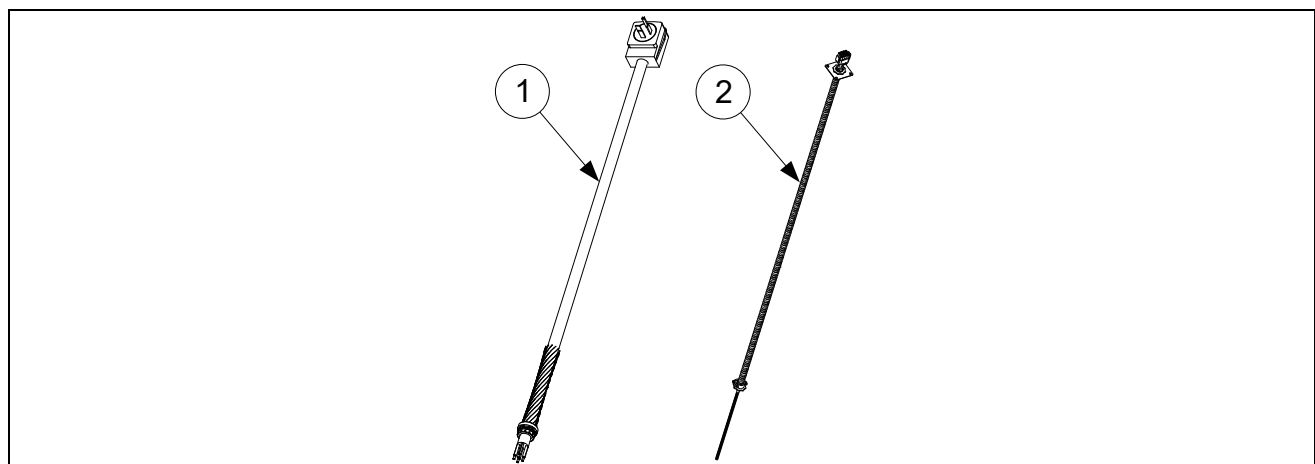
1.5.6.7 Wiring Harness Dispose, Pan Switch, Bulk



ITEM	PART #	COMPONENT
	8075811	HARNESS, DISPOSE/PAN SWITCH/ BULK

See the wiring diagram on last page.

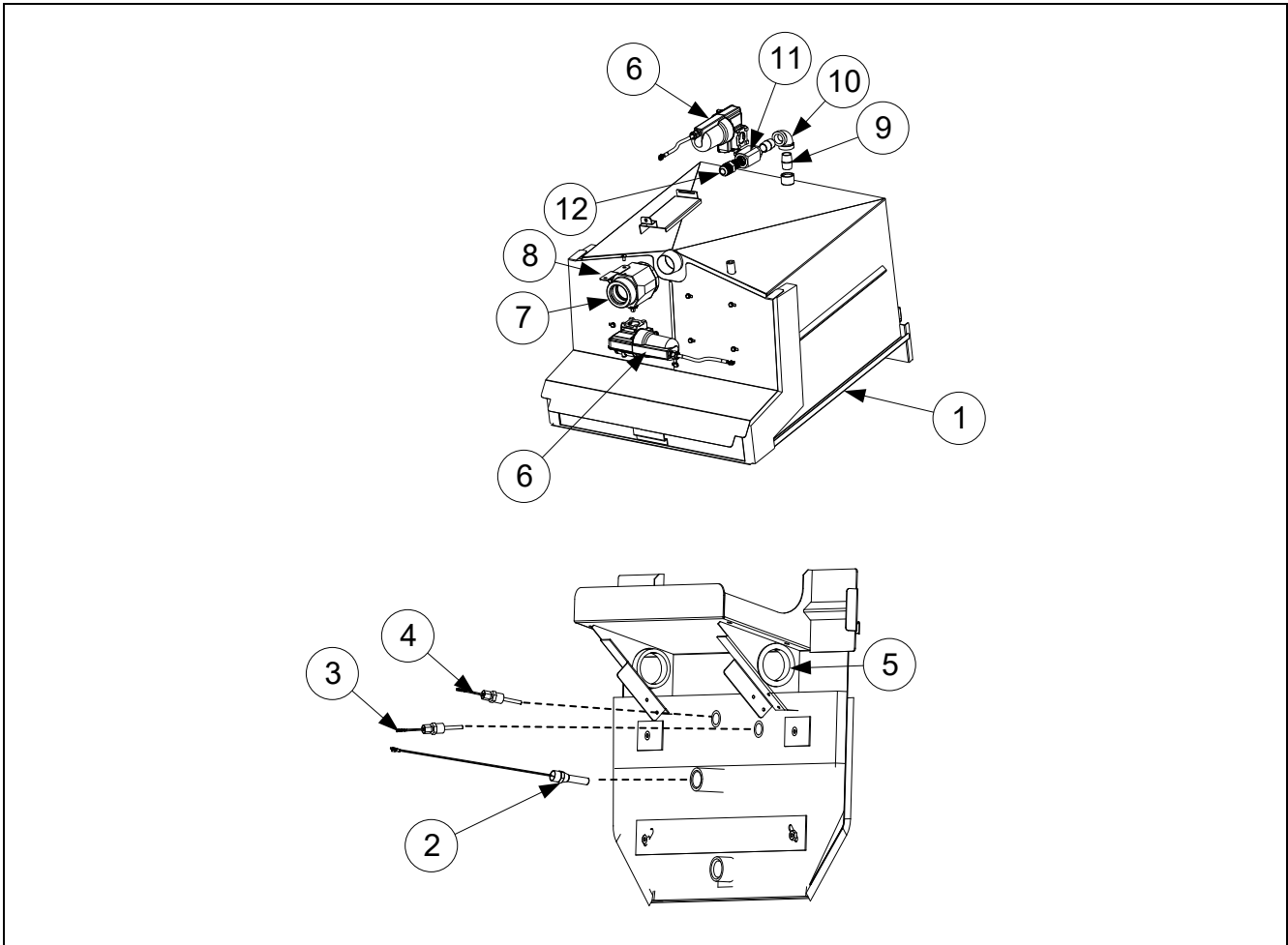
1.5.6.8 Cord Sets and Basket Lift Harness



ITEM	PART #	COMPONENT
1	8074658	CORD SET, 3 PHASE, 4 WIRE, 113" 4 GAUGE, PLUG- HUBBELL HBL-8462C W/O RING TERMINALS
2	1087489SP	HARNESS, BASKETLIFT 60" (12-PIN BASKETLIFT)

1.6 Frypots and Associated Components

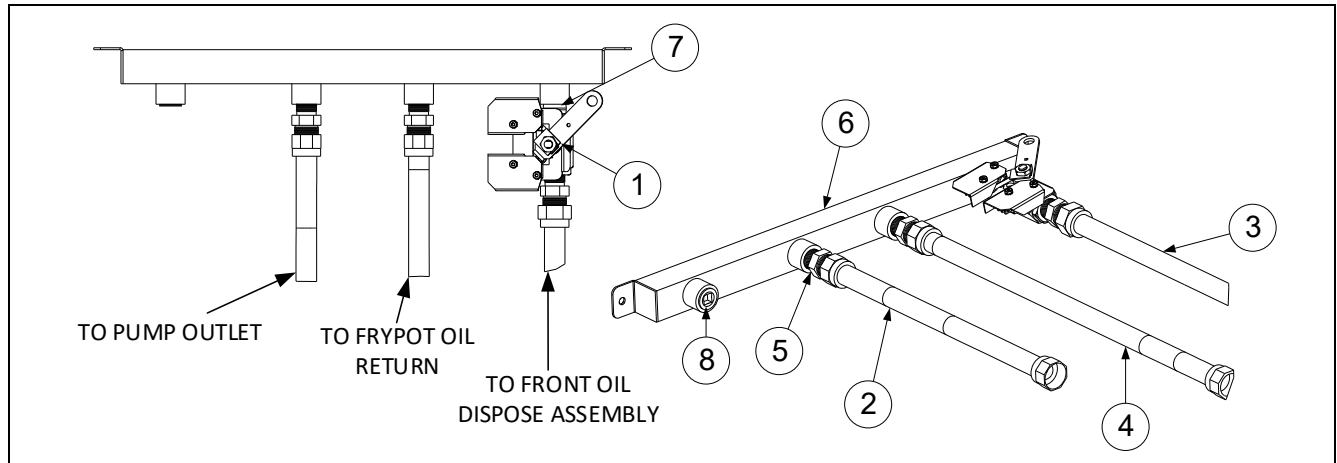
1.6.1 Frypot Components



ITEM	PART #	COMPONENT
1	1088561	FRYPOT, FQE80
√ 2		THERMOSTAT ASSEMBLY, HIGH-LIMIT LONG STANDARD
	8262454	NON-CE FULL VAT 425°F (218°C) (17KW FV AND 14KW FV) (COLOR CODED BLACK 8067543)
	8262455	CE FULL VAT 415°F (213°C) (14KW AND 17KW CE) (COLOR-CODED YELLOW 8068132)
√ 3	8263287	PROBE, KIT AIF/VIB RTD
√ 4	8263544	PROBE, KIT TOUCH ELEC ATO RTD
5	8070128	BUSHING INSULATING HEYCO
√ 6	8075808	ACTUATOR, ROTARY 24VDC (#2) BLACK
√ 7	8103798	VALVE, 1½" DRAIN ROTARY ACTUATOR (DRAIN)
*	8160544	O-RING SEAL - DRAIN VALVE
8	2401577	STRAP, DRAIN FQ1814
9	8130022	NIPPLE, ½" X CLOSE NPT BM
10	8130062	ELBOW, ½" BLK 90°
√ 11	8103754	VALVE, ½" NPT ROTARY ACTUATOR (RETURN)
12	8101668	ADAPTOR, MALE ⅝" OD X ½"
*	8101369	FLEXLINE, ⅝" OD X 17.50" (RETURN)

√ Recommended parts. * Not illustrated

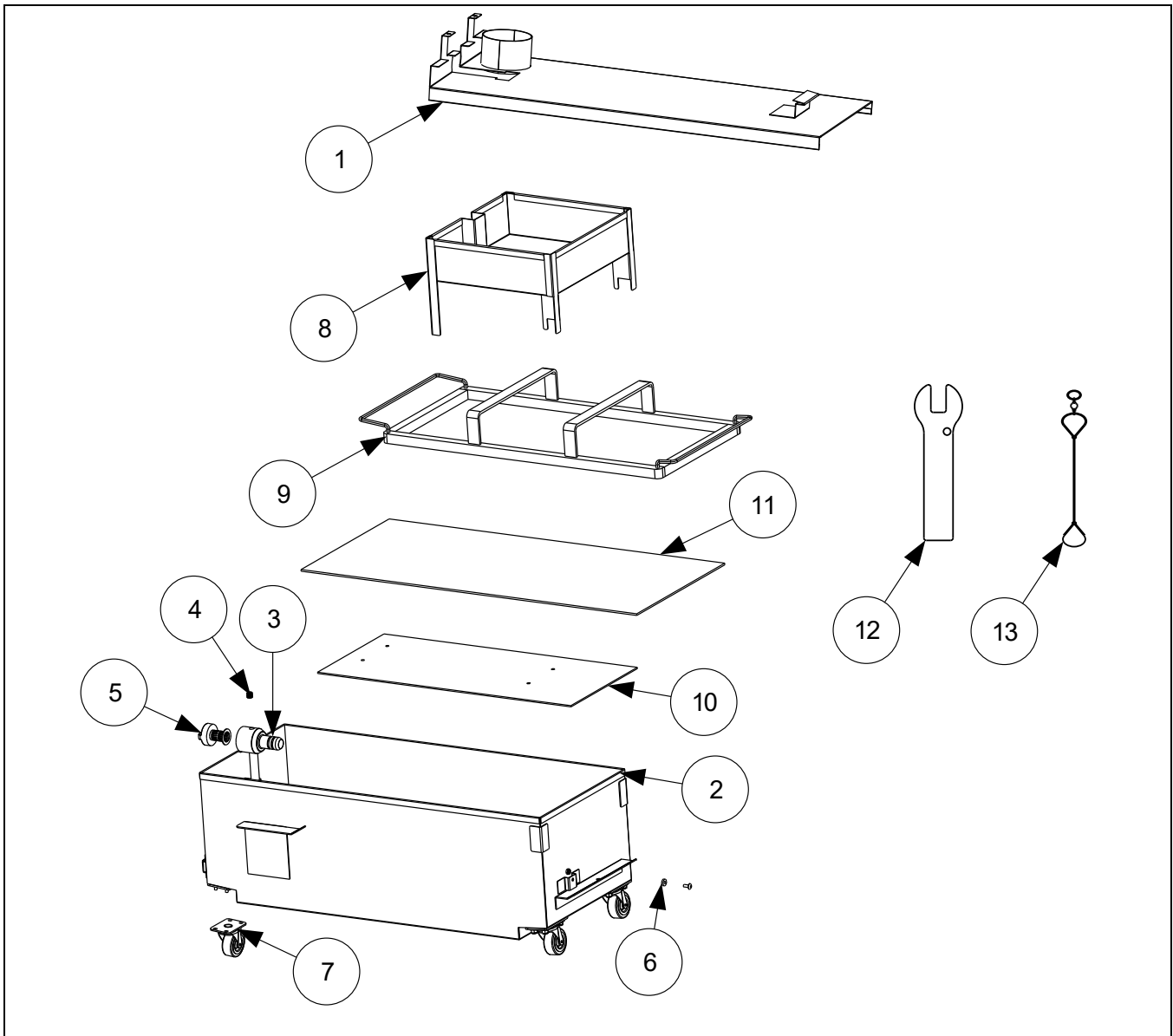
1.7 Oil Return Manifolds



ITEM	PART #	COMPONENT
1	1088559	VALVE, FRONT DISPOSE ASSEMBLY FQE80 (SEE SECTION 1.9.1 FOR PARTS)
2	8101057	FLEXLINE, 5/8" OD X 13"
3	8101069	FLEXLINE, 5/8" OD X 29.50"
4	8101369	FLEXLINE, 5/8" OD X 17.50"
5	8101668	ADAPTER, 5/8" TO 1/2" NPT MALE
6	8104193	MANIFOLD, OIL RETURN
7	8130022	NIPPLE, 1/2 X CLOSE N.P.T. B.M.
8	8130463	PLUG, PIPE 1/2" NPT BM

1.8 Filtration System Components

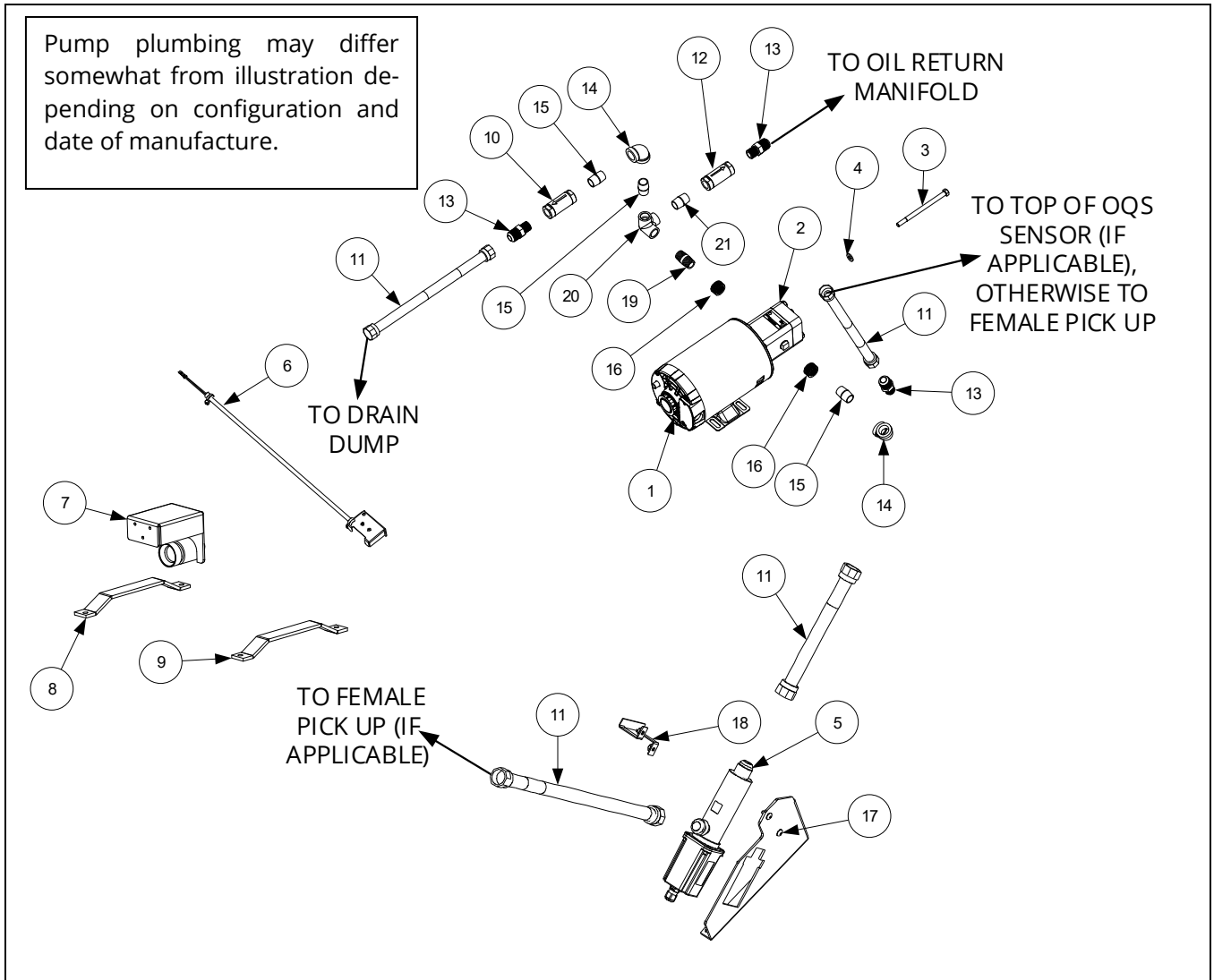
1.8.1 Filter Pan and Accessories



ITEM	PART #	COMPONENT
1	8239637	LID, FILTER PAN
2	1088551SP	PAN, FILTER ASSEMBLY WITH CASTERS
√ 3	8263288	O-RING (PKG. OF 6)
4	8130568	PLUG, 1/8" SOCKET HEAD PIPE
5	8238335	SCREEN, SUCTION LINE FILTER
6	8103007	MAGNET, PULL RING
7	8102805	CASTER, 2"
8	8239230	CRUMB TRAY
9	8103328	HOLD-DOWN RING 11.96" X 24.55"
10	1081029	SANA GRID FILTER SCREEN
11	8030345	PACK, 100-SHEET FILTER PAPER 17" X 33.25"
12	2401086	WRENCH, PRE-FILTER CAP
13	8104167	LANYARD, FILTER SCREEN WRENCH

√ Recommended parts.

1.8.2 Filter Pump and Accessories



ITEM	PART #	COMPONENT
√ 1		MOTOR AND GASKET KIT
	8261785	100V 50/60 HZ
	8261712	115V 50/60 HZ
	8261756	208V 50/60 HZ
	8261270	220-240V 50/60 HZ
	8261755	250V 50/60 HZ
*	1080028	HARNESS, FILTER PUMP MOTOR POWER
√ 2	8263192	PUMP & GASKET KIT, 8 GPM (INCLUDES 8160093, 8091020 & 8090194)
	8263415	PUMP & GASKET KIT, 8 GPM W/ HEATER HOLE (INCLUDES 8160093, 8091020 & 8090194)
	8160093	GASKET, PUMP/MOTOR
3	8091020	CAP SCREW, 5/16-INCH-18 5.00" NC HEX (CONNECTS PUMP TO MOTOR) (USE 8090194 WASHERS)
4	8090194	WASHERS
*	8071105	HEATER STRIP ASSEMBLY, 100-120V 25W 18"
*	8071098	HEATER STRIP ASSEMBLY, 208-250V 25W 18"
5	8263292	SENSOR, FILTERQUICK OQS REPLACEMENT
6	1087010SP	SENSOR ASSY, MAGNETIC POSITION (T)
7	8239577	MOUNT, FEMALE FILTER SUCTION
8	2401449	SUPPORT, FILTER PAN LEFT (FILTER PAN RAIL)

* Not illustrated. √ Recommended parts

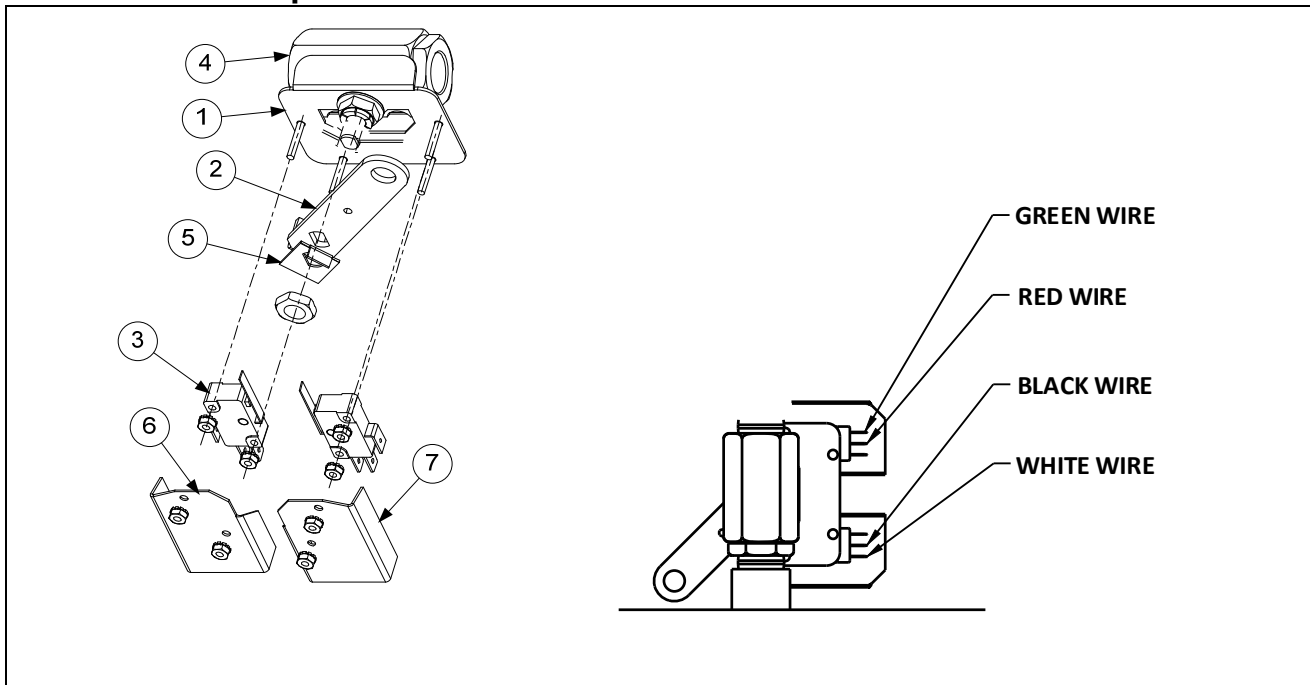
1.8.2 Filter Pump and Accessories cont.

ITEM	PART #	COMPONENT
9	2401450	SUPPORT, FILTER PAN RIGHT (<i>FILTER PAN RAIL</i>)
10	8105084	VALVE, 20-PSI CHECK STRATAFLO
11	8101057	FLEXLINE, 5/8" OD X 13"
12	8105100	VALVE, 1-PSI CHECK STRATAFLO
13	8101668	ADAPTER, 5/8" TO 1/2" NPT MALE
14	8130062	ELBOW, 1/2" 90° BM
15	8130022	NIPPLE, 1/2 X CLOSE N.P.T. B.M.
16	8130763	BUSHING, 3/4OD X 1/2ID NPT FLUSH
17	2401456	MOUNT, OQS
18	2401385	RETAINER, OQS SENSOR FQ
19	8130087	NIPPLE, 1/2 X 1.50 NPT BM
20	8130331	ELBOW - W/SIDE OULET - 1/2 NPT
21	8130900	NIPPLE, 1/2 X CLOSE NPT S/S

* Not illustrated. ✓ Recommended parts.

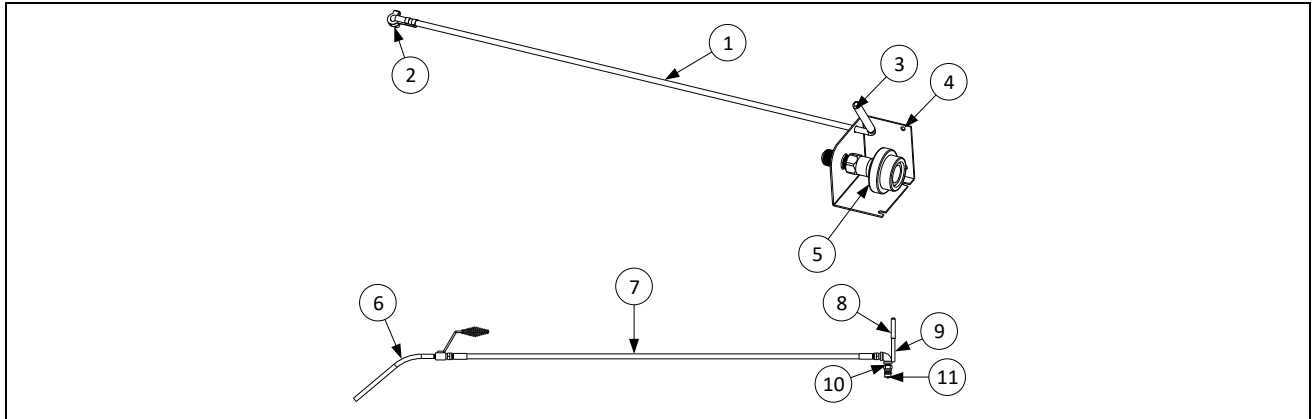
1.9 Bulk Oil System Components

1.9.1 Bulk Oil Dispose Waste Valve



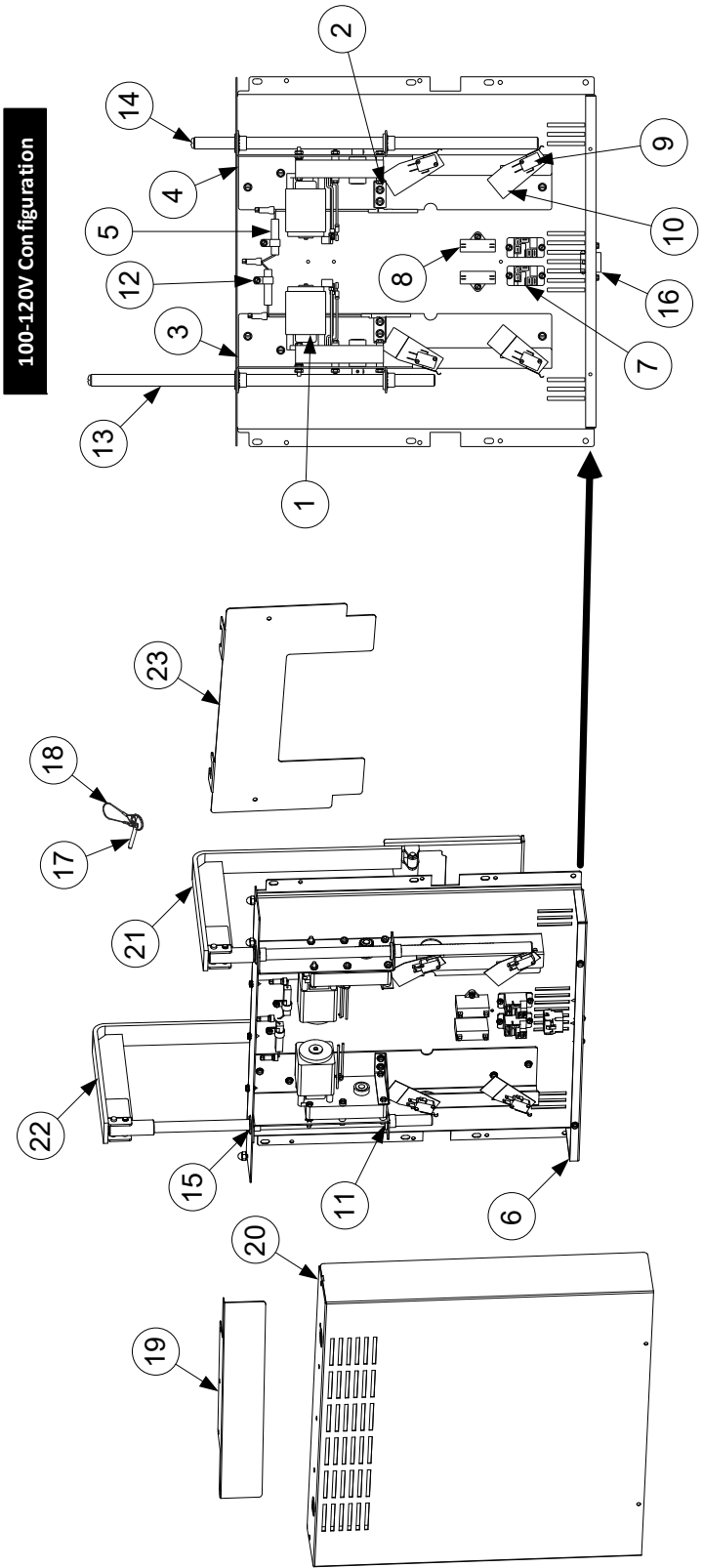
ITEM	PART #	COMPONENT
	1088559	VALVE, FRONT DISPOSE
1	1080445	BRACKET, RTI WASTE VALVE
2	2401917	HANDLE, VALVE FRONT DISPOSE
3	8074936	MICROSWITCH, GOLD SEALED
4	8100278	VALVE, 1/2" BALL
5	9002935	RETAINER, NUT RETURN VALVE
6	9012348	COVER, DV SAFETY SWITCH
7	9022348	COVER, DV SAFETY SWITCH

1.9.2 Bulk Connection - Front



ITEM	PART #	COMPONENT
	1088560	MOUNT, FRONT DISPOSE FQ80E
1	8105045	ROD, DISPOSAL HANDLE FQ80E
2	8090601	CLIP, CLEVIS LT. ROD END
3	8160637	CAP, VINYL BLUE 5/16" X 3"
4	8239578	MOUNT, WAND CONNECTION FQ80E
5	8100490	QUICK DISCONNECT 1/2" FEMALE
	1080528	HOSE, WASH DOWN ASSMBLY
6	1061454	NOZZLE ASSY, W/HANDLE
7	8101434	HOSE ASSY, PF STANDARD
8	8160631	CAP, 1/2" X 3" RED VINYL
9	8237153	HANDLE W/A, WASH DOWN
10	8130022	NIPPLE, 1/2" X CLOSE NPT
11	8100487	QUICK DISCONNECT, 1/2" MALE

1.10 Basket Lift Assembly and Associated Parts



NOTES:

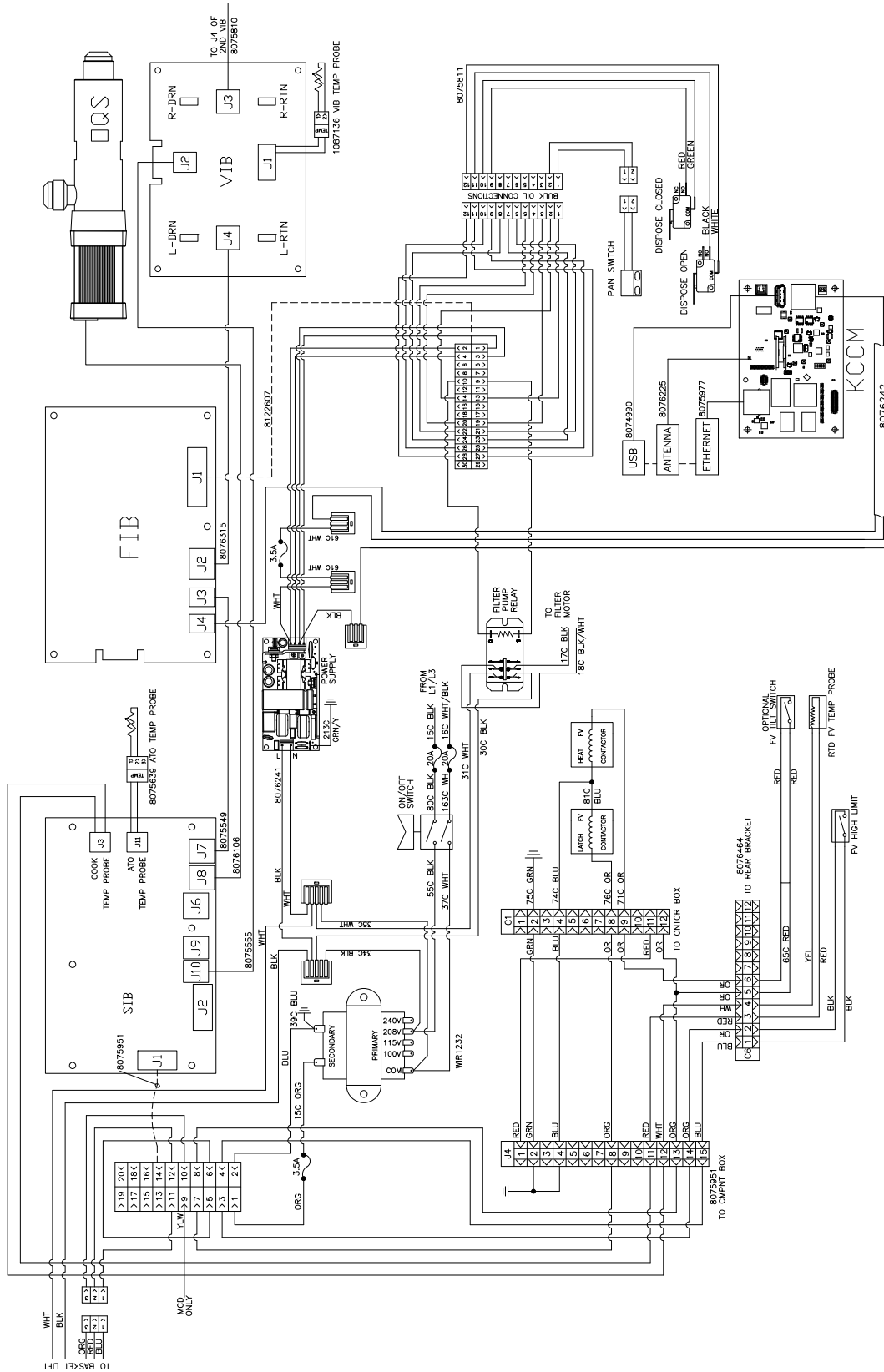
1. Assembly 1086896 does not include items 17-23. These items must be ordered separately.
2. For 100-120V units, each individual resistor (807-2661) may be replaced or the entire resistor assembly (806-85-30SP) may be replaced.
3. For 208-250V units, the entire resistor assembly (106-2770SP) 200-220V or (106-2771SP) 230-250V must be replaced.
4. Wiring has been omitted for clarity.

1.10 Basket Lift Assy and Associated Parts cont.

ITEM	PART #	COMPONENT
		BASKET LIFT ASSEMBLIES (SEE NOTE 1 IN ILLUSTRATION)
	1086896SP	BASKET LIFT ASSY, 208-250VAC (ITEMS 1-16) SHOWN
1	1085031SP	MOTOR ASSY, 208-250VAC MODULAR BASKET LIFT
2	2209678	GUSSET, BASKET LIFT MOTOR
3	2219624	CHASSIS, LEFT BASKET LIFT
4	2229624	CHASSIS, RIGHT BASKET LIFT
5		RESISTOR ASSY
	8068530SP	100-120V MODULAR BASKET LIFT (SEE NOTE 2 IN ILLUSTRATION)
	1062770SP	208-220VAC MODULAR BASKET LIFT (SEE NOTE 3 IN ILLUSTRATION)
	1062771SP	230-250VAC MODULAR BASKET LIFT (SEE NOTE 3 IN ILLUSTRATION)
6	8242391	MOUNT WMNT, 1814E MODULAR B/LIFT
7	8071683	RELAY, 12VDC
8	8076253	CAPACITOR, MOTOR RUN 4.0 MFD 440 VAC
9	8072572	MICROSWITCH
10	8120442	INSULATION, MICROSWITCH
11	8090082	RING, BUSHING RETAINER
12	8090810	CLAMP, NYLON
13	8101012	ROD, MODULAR BASKET LIFT
14	8090129	SCREW, 1/4-20 X 5/8 SLOTTED ROUND HEAD
15	8130035	BUSHING, BRONZE
16	8070159	CONNECTOR, 12-PIN PLUG
*	WIR0166	WIRE ASSY, BASKET LIFT W/ RELAY 200-250VAC
17	8104852	PIN, 1/4" X 1-5/16" QUICK RELEASE
18	8104854	LANYARD, W/RING
19	2401693	SHIELD, REAR MODULAR BASKET LIFT COVER
20	2401708	COVER, 1814E MODULAR BASKET LIFT
21	8239492	ARM, LEFT MODULAR BASKET LIFT
22	8239493	ARM, RIGHT MODULAR BASKET LIFT
23	2602131	GUIDE, BASKET LIFT ARM

* Not illustrated.

1.11 FilterQuick™ FQE80 Series Wiring



8052213B



FRYMASTER
8700 LINE AVENUE, SHREVEPORT, LA 71106-6800

800-551-8633
318-865-1711

WWW.FRYMASTER.COM

EMAIL: FRYSERVICE@WELBILT.COM



Welbilt offers fully-integrated kitchen systems and our products are backed by KitchenCare® aftermarket parts and service. Welbilt's portfolio of award-winning brands includes Cleveland™, Convothem®, Crem®, Delfield®, Frymaster®, Garland®, Kolpak®, Lincoln®, Merco®, Merrychef® and Multiplex®.

Bringing innovation to the table • welbilt.com

©2022 Welbilt Inc. except where explicitly stated otherwise. All rights reserved. Continuing product improvement may necessitate change of specifications without notice.

Part Number FRY_P_8197935 09/2022