

# Frymaster®

We Fit the Way You Fry

## FilterQuick™ FQG30U easyTouch® Gas Fryer (Serial #'s 1712 - Current)

### Parts Manual

This manual is updated as new information and models are released. Visit our website for the latest manual.



Part Number: FRY\_P\_8197478 05/2024



**NOTICE**

**IF, DURING THE WARRANTY PERIOD, THE CUSTOMER USES A PART FOR THIS FRYMASTER DEAN EQUIPMENT OTHER THAN AN UNMODIFIED NEW OR RECYCLED PART PURCHASED DIRECTLY FROM FRYMASTER DEAN, OR ANY OF ITS FACTORY AUTHORIZED SERVICERS, AND/OR THE PART BEING USED IS MODIFIED FROM ITS ORIGINAL CONFIGURATION, THIS WARRANTY WILL BE VOID. FURTHER, FRYMASTER DEAN AND ITS AFFILIATES WILL NOT BE LIABLE FOR ANY CLAIMS, DAMAGES OR EXPENSES INCURRED BY THE CUSTOMER WHICH ARISE DIRECTLY OR INDIRECTLY, IN WHOLE OR IN PART, DUE TO THE INSTALLATION OF ANY MODIFIED PART AND/OR PART RECEIVED FROM AN UNAUTHORIZED SERVICER.**

**FQG30U easyTouch® FILTERQUICK™ SERIES GAS FRYERS**  
**PARTS MANUAL**  
**TABLE OF CONTENTS**

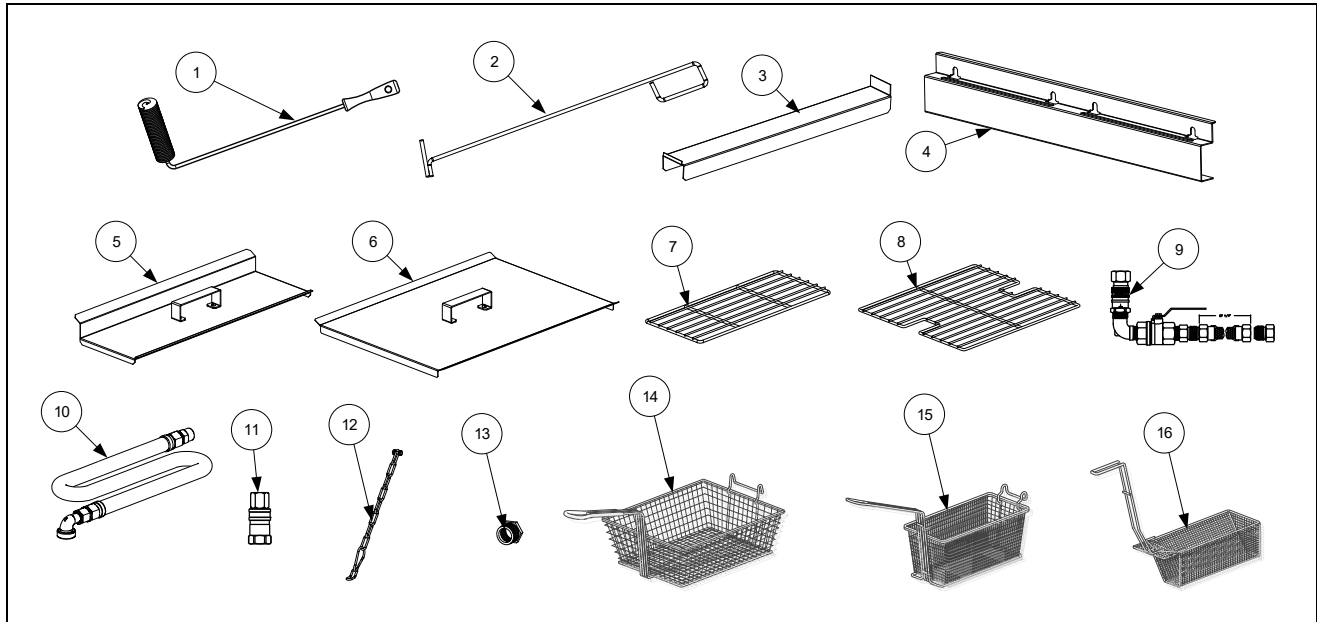
**CHAPTER 1: Parts List**

1.1	Accessories .....	1-1
1.2	Doors, Sides, Flue Caps, Top Caps and Casters .....	1-2
1.3	Control Panel Frame Assemblies.....	1-3
1.4	Drain Tube Sections and Associated Parts .....	1-4
1.5	Electronics and Electrical Components .....	1-5
1.5.1	Component Boxes and Associated Parts .....	1-5
1.5.2	Transformer Boxes.....	1-6
1.5.3	FIB (Filter Interface Board) Auto Top Off / Filter Box Comp <b>(prior to 06/2019)</b> .....	1-8
1.5.3.1	FIB (Filter Interface Board) Auto Top Off / Filter Box Comp <b>(06/2019-06/2021)</b> .....	1-9
1.5.3.2	FIB (Filter Interface Board) Auto Top Off / Filter Box Comp <b>(07/2021 - present)</b> .....	1-11
1.5.4	VIB (Valve Interface Board) Components .....	1-12
1.5.5	Power Reset Switch and USB Connector .....	1-12
1.6	Wiring .....	1-13
1.6.1	Wiring Harness Full Vat - SIB to Rear of Component Box Fryer w/out OIB .....	1-13
1.6.2	Wiring Harness Full Vat - SIB to Rear of Component Box Fryer w OIB.....	1-14
1.6.3	Wiring Harness Dual Vat - SIB to Rear of Component Box w/out OIB .....	1-15
1.6.4	Wiring Harness Dual Vat - SIB to Rear of Component Box w OIB.....	1-16
1.6.5	Ignition Wiring Harness Full Vat – Control Box to Components .....	1-17
1.6.6	Ignition Wiring Harness Dual Vat – Control Box to Components .....	1-18
1.6.7	FIB Wiring Harness .....	1-19
1.6.8	Miscellaneous Wiring Harnesses and Cord Sets .....	1-19
1.7	Frypots and Associated Components .....	1-20
1.7.1	Full-Vat Frypot Components .....	1-20
1.7.2	Dual-Vat Frypot Components .....	1-22
1.7.3	Frypot Assemblies and Associated Parts.....	1-23
1.8	Oil Return Manifolds .....	1-25
1.9	Gas Supply and Combustion System Components .....	1-25
1.10	Gas Valves and Associated Components .....	1-27
1.11	Filtration System Components .....	1-29
1.11.1	Filter Motor Harnesses <b>(after 05/2019)</b> .....	1-30
1.12	ATO (Automatic Top-Off) Components.....	1-31
1.12.1	JIB Cradle, JIB Box, JIB Cap Assemblies .....	1-31
1.12.2	ATO Pump Assembly Non-Bulk .....	1-32
1.12.3	ATO Pump Assembly Bulk.....	1-33
1.12.4	Shortening Melting Unit.....	1-34
1.13	Bulk Oil System Components .....	1-35
1.13.1	Bulk Oil Dispose Waste Valve.....	1-35
1.13.2	Bulk Oil Manifold and Accessories.....	1-36
1.14	Basket Lift Assembly and Associated Parts.....	1-38
1.15	Oil Quality Sensor (OQS) and Associated Parts .....	1-40
1.16	FilterQuick™ FQG30-T Series Simplified Wiring .....	1-41

# FQG30U easyTouch® FILTERQUICK™ SERIES GAS FRYERS

## PARTS LIST

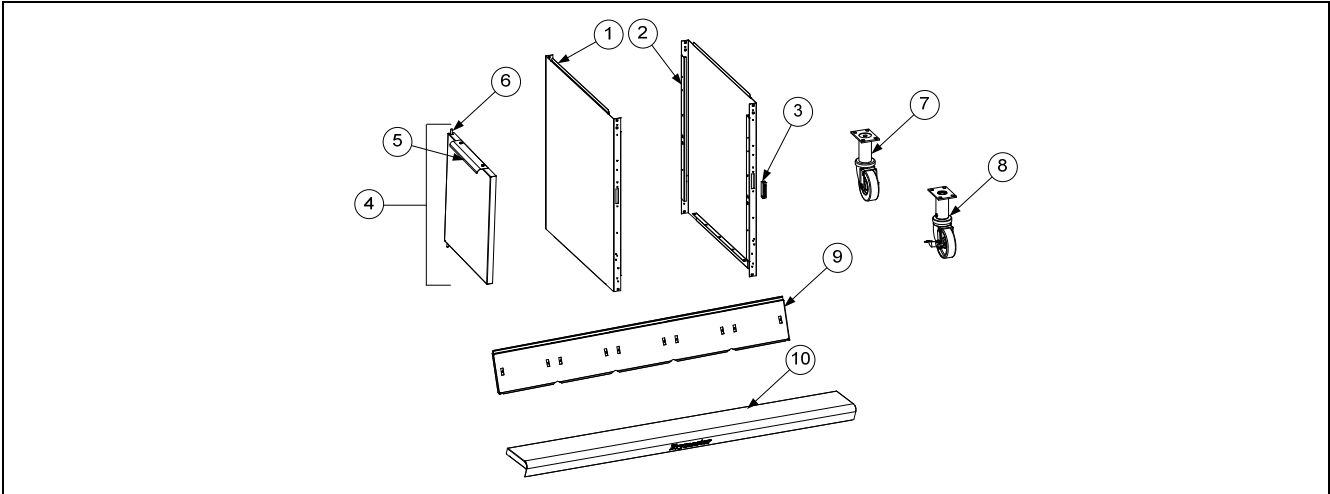
### 1.1 Accessories



ITEM	PART #	COMPONENT
1	8030429	Brush, Frypot
2	8030388	Fryers Friend
3	1086156	Connecting Strip, Frypot
4	2307495	Hanger, Basket Two Station ( <i>use two for a Four Station fryer</i> ) Taco Bell / Sonic
	2309086	Hanger, Basket Two Station - LOWER - ( <i>use two for a Four Station fryer</i> ) Burger King
	2307497	Hanger, Basket Three Station - Taco Bell / Sonic
	2309332	Hanger, Basket Three Station - LOWER Burger King
5	8238898	Cover, Frypot, Dual Vat
6	8238897	Cover, Frypot, Full Vat
7	8030372	Basket Support Rack, Dual Vat
8	8030375	Basket Support Rack, Full Vat
*	8030136	Basket Support Screen, Full Vat (screen w/handle used in place of Item 8)
9	8100478	Gas Line, 1" Dormont Flexible 27" w/Valve
10	8100088	36" Gas Line, 1-Inch Dormont Flexible
	8100085	48" Gas Line, 1-Inch Dormont Flexible
11	130001257	Quick-Disconnect Fitting, 1" Male & Female
	8103745	Quick Disconnect Fittings, 3/4" set (includes male and female connectors)
12	8260900	Kit, Chain Restraint
*	8261095	Kit, Anchor Strap
13	8261045	Bushing, Flexible Gas Line (8130032)
14	8030099	Basket, Full Size
15	8030271	Basket, Twin Size
16	8030511	Tray, Sediment GL30
*	8030002	Powder, Filter (80- 1-Cup Applications)
*	8030445	Pack, 100-Sheet Filter Paper 16.5 X 25.5

\* Not illustrated.

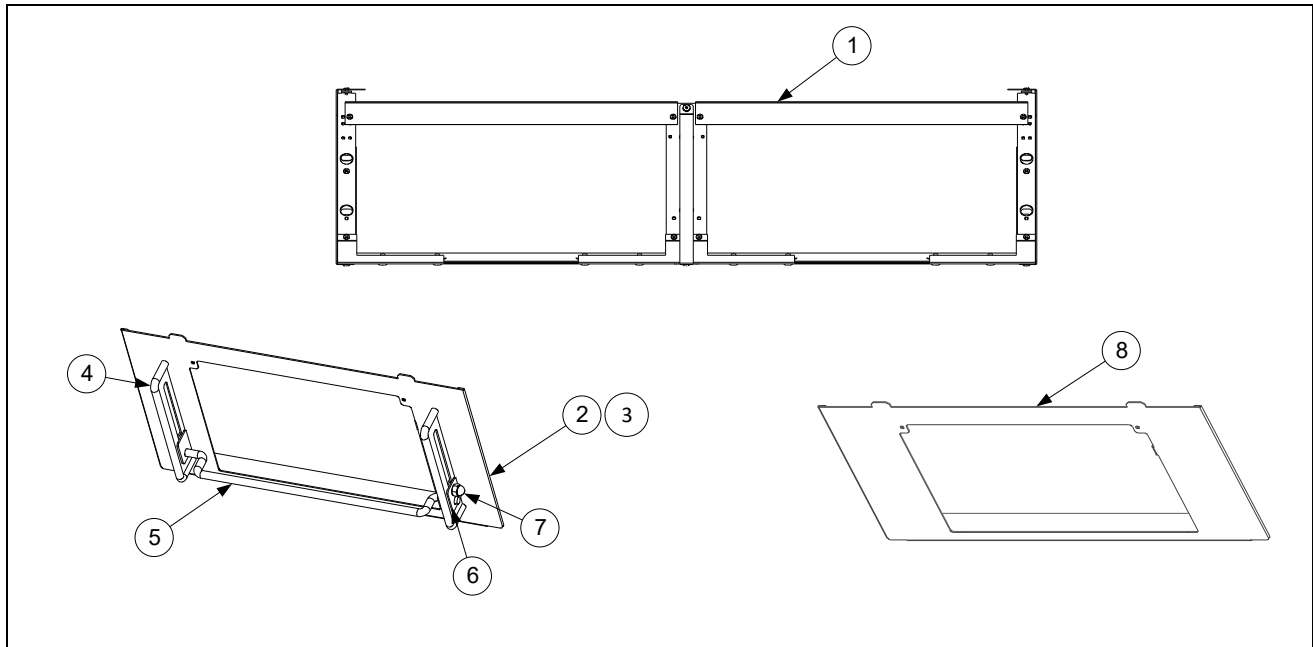
## 1.2 Doors, Sides, Flue Caps and Casters



ITEM	PART #	COMPONENT
1	<a href="#">2611424</a>	Side, Cabinet Left
2	<a href="#">2621424</a>	Side, Cabinet Right
3	<a href="#">8101105</a>	Magnet, Door (vertical) (use <a href="#">8102346</a> for horizontal over filter pan)
4	1064397	Door, Left or Right (Left shown - move handle to bottom for right) (use 1080915 for Door w/ Manual Holder)
5	<a href="#">2304960</a>	Handle, Eurolook Door
6	1064067	Pin Assembly, Door
*	8100275	Spring, Door Pin
*	8090970	Retaining Ring
*	<a href="#">2307192</a>	Hinge, Door Lower
7	<a href="#">8100327</a>	Caster without Brake
8	<a href="#">8100944</a>	Caster with Brake
9		Flue Cap-Stainless Steel
	8239440	Two Station Fryer
	8239447	Three Station Fryer
	<a href="#">8239448</a>	Four Station Fryer
	N/A	Five Station Fryer
10		Top Cap
	1086158	Two Station Fryer
	1086159	Three Station Fryer
	<a href="#">1086160</a>	Four Station Fryer
	1086161	Five Station Fryer

\* Not illustrated.

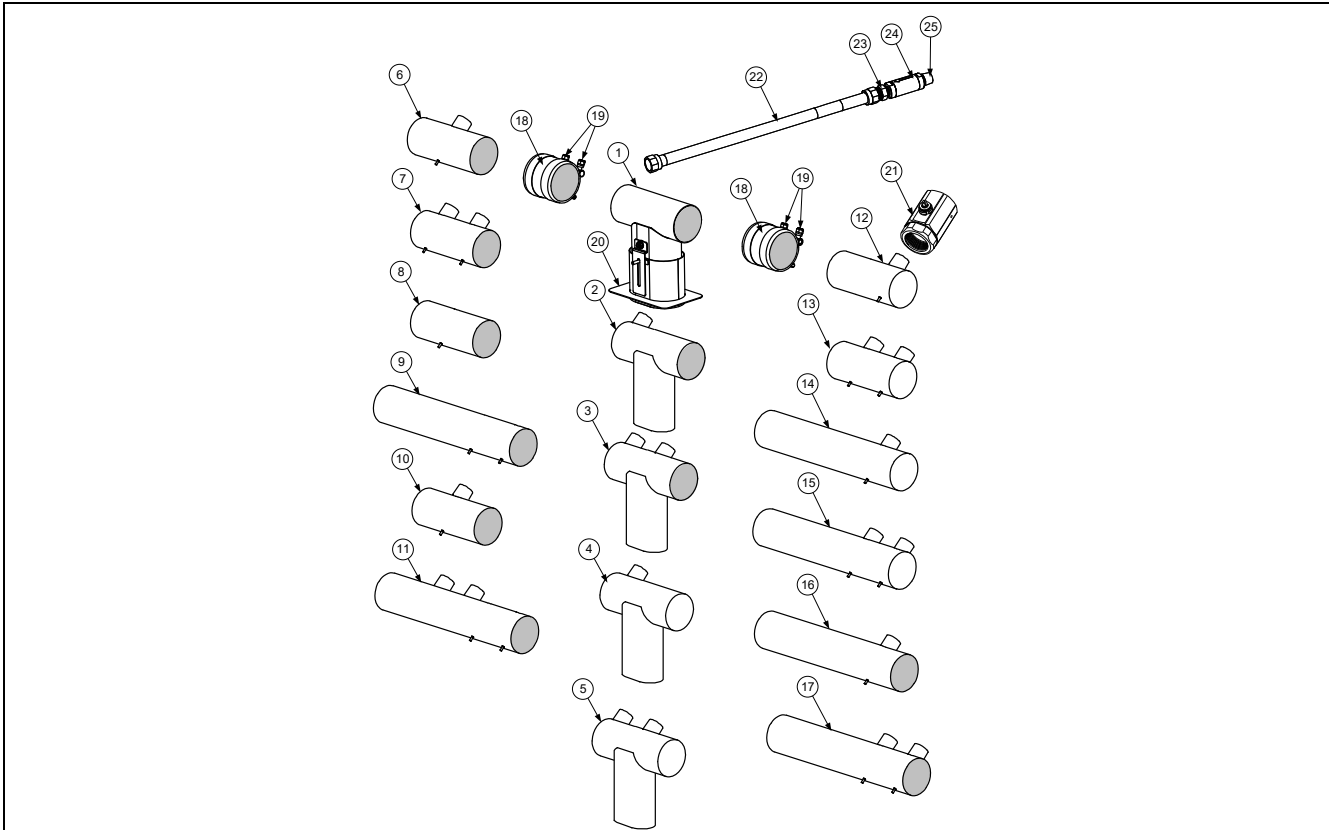
### 1.3 Control Panel Frame Assemblies



ITEM	PART #	COMPONENT
1	1088340	Frame Assembly, Control 2-Battery 10° <i>(after 05/2019)</i>
	1087710	Frame Assembly, Control 2-Battery <i>(prior to 06/2019)</i>
	1087711	Frame Assembly, Control 3-Battery <i>(prior to 06/2019)</i>
	1088362	Frame Assembly, Control 3-Battery 10° <i>(after 05/2019)</i>
	1087712	Frame Assembly, Control 4-Battery <i>(prior to 06/2019)</i>
	1088359	Frame Assembly, Control 4-Battery 10° <i>(after 05/2019)</i>
	1088360	Frame Assembly, Control 5-Battery 10° <i>(after 05/2019)</i>
2	1087744	Bezel Assembly, Control
3	2602083	Bezel, Single Touchscreen
4	8104898	Guide, Controller Adjustable Guard
5	8104899	Bar, Guard (Touch Screen Protection)
6	8104714	Plate, Outside Tightening
7	8090047	Nut, Cap ¼"-20
8	130000371	Bezel Assembly, Control FQ4000 <i>(after to 03/2022)</i>
*	8161204	Vent, UI Angled Spacer <i>(Use kit 8263618 for fryers without vent spacers)</i>

\* Not illustrated.

## 1.4 Drain Tube Sections and Associated Parts

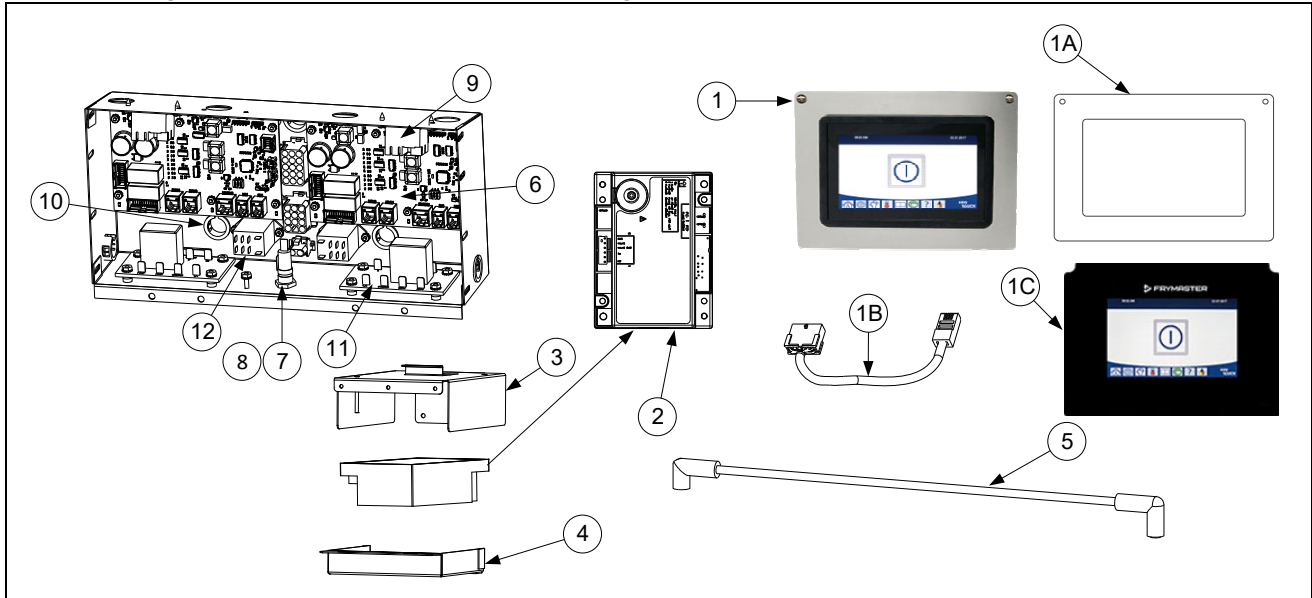


ITEM	PART #	COMPONENT
1	1085906	Drain Tube, Dump Left Closed/Right End Open <b>(Use 1085915 for Bulk)</b>
2	1085904	Drain Tube, Dump Full-Vat Left Closed/Right End Open <b>(Use 1085911 for Bulk)</b>
3	1085917	Drain Tube, Dump Dual-Vat Left Closed/Right End Open <b>(Use 1085916 for Bulk)</b>
4	1085905	Drain Tube, Dump Full-Vat Left Closed/Right End Closed <b>(Use 1085914 for Bulk)</b>
5	1085919	Drain Tube, Dump Dual-Vat Left Closed/Right End Closed <b>(Use 1085918 for Bulk)</b>
6	8237322	Drain Tube, Full-Vat Left and Right Open
7	8237324	Drain Tube, Dual-Vat Left and Right Open
8	8103550	Drain Tube, Short, Open Both Ends
9	8103551	Drain Tube, Long, Open Both Ends
10	8238812	Drain Tube, Full -Vat Left and Right Open
11	8238813	Drain Tube, Dual-Vat Left and Right Open
12	8237330	Drain Tube, Full-Vat Left Open/Right End Closed
13	8237331	Drain Tube, Dual-Vat Left Open/Right End Closed
14	8237329	Drain Tube, Full-Vat Left Open/Right End Closed
15	8237326	Drain Tube, Dual-Vat Left Open/Right End Closed
16	8237328	Drain Tube, Full-Vat Left and Right Open 15.31"
	8238791	Drain Tube, Full-Vat Left and Right Open 18.95"
17	8237327	Drain Tube, Dual-Vat Left and Right Open 15.31"
	8238814	Drain Tube, Dual-Vat Left and Right Open 18.95"
18	8160772	Sleeve
19	8090969	Clamp
*	8160665	Vinyl Cap
20	8237480	Guard, Filter Lid Splash 2 battery
	8237915	Guard, Filter Lid Splash 3, 4 and 5 battery
21	8104353	Valve, Drain 1¼" NPT
*	8160544	O-Ring (Drain)
22	8101369	Flexline, ⅝" OD x 17.50"
23	8101668	Adaptor, Male ⅝" OD x ½"
24	8105084	Valve, Check 20 PSI
25	8130022	Nipple, ½" x Close NPT

\* Not illustrated.

## 1.5 Electronics and Electrical Components

### 1.5.1 Component Boxes and Associated Components

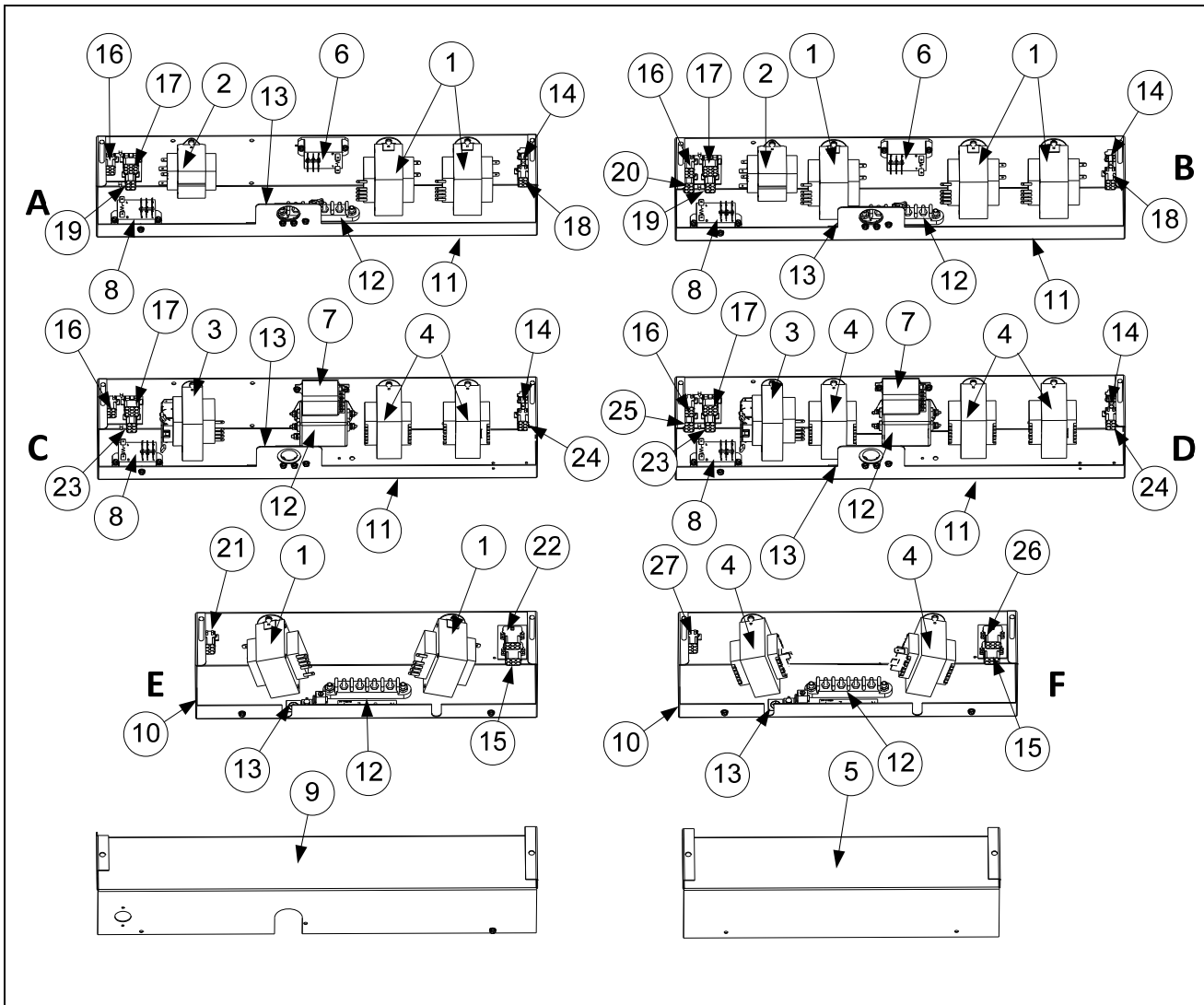


ITEM	PART #	COMPONENT
√ 1	8263748	Controller, Common UI Kit <i>(for fryers manufactured from 04/2022 to present)</i>
1A	130000329	Bezel, Common UI <i>(Metal Bezel only)</i>
1B	8076596	4000 Xfer Cable <i>(Connects Common UI Controller to SIB Board)</i>
√ 1C	1088521SP	Controller, FQ4000 <b>A&amp;W</b> <i>(for fryers manufactured prior to 04/2022)</i>
	1087769SP	Controller, FQ4000 <b>Arby's</b> <i>(for fryers manufactured prior to 04/2022)</i>
	1087515SP	Controller, FQ4000 <b>Burger King</b> <i>(for fryers manufactured prior to 04/2022)</i>
	1089066SP	Controller, FQ4000 <b>Dairy Queen</b> <i>(for fryers manufactured prior to 04/2022)</i>
	1088523SP	Controller, FQ4000 <b>General Market</b> <i>(for fryers manufactured prior to 04/2022)</i>
	1088968SP	Controller, FQ4000 <b>Sheetz</b> <i>(for fryers manufactured prior to 04/2022)</i>
	1088533SP	Controller, FQ4000 <b>Sonic</b> <i>(for fryers manufactured prior to 04/2022)</i>
√	1087847SP	Controller, FQ4000 <b>Taco Bell</b> <i>(for fryers manufactured prior to 04/2022)</i>
√ 2	8075949	Module, Ignition Single Spark Fenwal
√	8076382	Module, Ignition Single Spark Fenwal FV (Left) / DV Australia 3 sec
√	8076383	Module, Ignition Single Spark Fenwal FV (Right) Australia 4 sec
		Harnesses, Ignition Module (rear of component box to components) <i>(See Sections 1.6.5 &amp; 1.6.6)</i>
3	1087218	Plate, Assy Fenwal Module Mounting
4	8242482	Cover, Fenwal Ignition Module
√ 5	8075614	Cable, Ignition 12"
*	W115C515	Flame Sense Wire
√ 6	1085979	Board, Interface SIB (Smart Interface Board)
√ 7	8071321	Fuse Holder
√ 8	8075570	Fuse 3.5A 250V
√ 9	8071683	Relay, Blower 12VDC
10	8071926	Bushing, .875 Split
√ 11	8074812	Relay Board, 7-second Time Delay 120V <i>(U.S., Canadian and Mexico units)</i>
	8074934	Relay Board, 7-second Time Delay 220V, 230V, 240V and 250V units <i>(Intl units)</i>
	8075731	Relay Board, 7-second Time Delay 100V <i>(Japan)</i>
√ 12	8075623	Relay, 24VDC SPDT OIB (Oil Is Back) Sensor
*	8075829	Speaker 4 ohm
*	8072659	Switch, Momentary <i>(Power Reset, only in far-left component box prior to 12/6/2017)</i>
√ *	8104320	Lanyard, Controller Restraint
*	8101164	Block, One-Piece Screwless Terminal
*	8160217	Insulation, Terminal Block Paper
*	8075553	Cable, P-Bus Left SIB (J9) to Right SIB (J9)

ITEM	PART #	COMPONENT
*	8075555	Cable, P-Bus w/ power Right SIB (J10) to VIB (Valve Interface Board) (J2)
*	8075551	Cable, C-Bus Right SIB (J7) to FIB (Filtration Interface Board) (J3)
*	8075549	Cable, C-Bus Right SIB (J7) to Right SIB (J8) (Connects component boxes together)
*	8076106	Adapter, RJ11 CAN SIB (J8) to Legacy 6-pin CAN (Micro Mate & Lock) (connects OQS sensor to SIB 5")
*	8074552	Terminator, CAN (ONLY used on OQS harness Y- adaptor)
*	8075632	Terminator, CAN End Communication RJ11 (used in SIB J8 if OQS is <b>NOT</b> installed)
*	8076243	Harness, Wire SIB to Components FV ( <b>without OIB</b> )
*	8076244	Harness, Wire SIB to Components DV ( <b>without OIB</b> )
*	8076364	Harness, Wire SIB to Components FV ( <b>with OIB</b> )
*	8076365	Harness, Wire SIB to Components DV ( <b>with OIB</b> )

\* Not illustrated. ✓ Recommended parts. See Wiring Diagrams in FQG30-T Service Manual for cable locations

## 1.5.2 Transformer Boxes

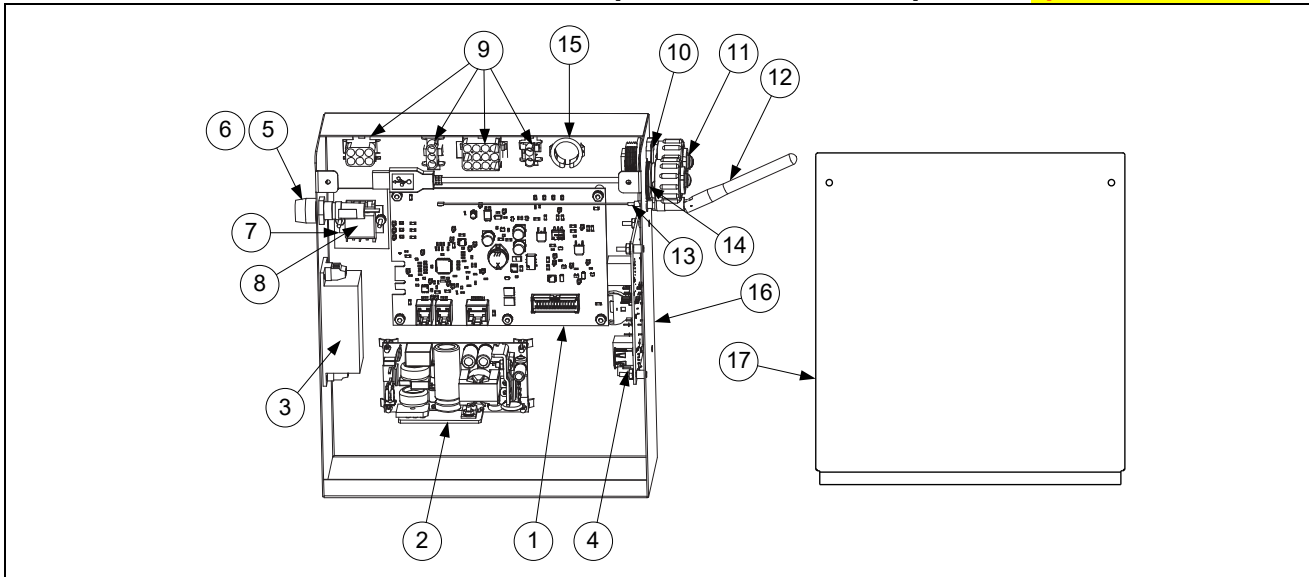


ITEM	PART #	COMPONENT
		Box Assembly, Transformer
A	1088351	230/430 (430 has added cord set 1087810)
B	1088367	230/430 CE Export (430-T has added cord set 1088370)
C	1088352	330 (530 has added cord set 1088353)
D	1088368	330 CE Export (530 has added cord set 1088371)
E	1087813	430/530 Non-CE 208/220/230/240V

ITEM	PART #	COMPONENT
F	1088369	430/530 CE Export 100V/120V (530-T CE has added cord set 1088371)
√ 1	<a href="#">8075362</a>	Transformer, 115-240V 80VA 24VAC
√ 2	<a href="#">8070800</a>	Transformer, 120V/24V 50VA Filter
√ 3	<a href="#">8072180</a>	Transformer, 120V/24V 50VA Filter
√ 4	<a href="#">8071022</a>	Transformer, 220/240V 75VA
5	2401696	Cover, 430/530 Transformer Box (Small)
√ 6	<a href="#">8075802</a>	Relay, DPDT 30A 120VAC (Control Reset Button) <i>(used for control power reset in domestic units)</i>
√ 7	<a href="#">8074770</a>	Relay, DPDT 20A 240V (Control Reset Button) <i>(used for control power reset in international units)</i>
√ 8	<a href="#">8074482</a>	Relay, Filter Pump 30A 24VDC DPDT
9	<a href="#">2203191</a>	Cover, 230/330 Transformer Box (Large)
10	8239461	Box, 430/530 Transformer (Small)
11	8239437	Box, Transformer/Filter (Large)
12	<a href="#">8076428</a>	Filter, 250V 16A EMI Power Line
13	<a href="#">8070070</a>	Terminal, Ground Lug
14	1088229	Harness, Reset Relay
15	1085662	Harness Assembly, Cord set Female
16	<a href="#">1087727</a>	Harness, ATO/Filter Control
17	1087726	Harness, Filter Pump Motor Non-CE and CE Export
18	1088228	Harness, Transformer Vat #1 230/330 Non-CE
19	<a href="#">1087729</a>	Harness, Transformer Vat #2 230/330 Non-CE
20	<a href="#">1087730</a>	Harness, Transformer Vat #3 330 Non-CE
21	1087812	Harness, Transformer Vat #4/5 430/530 Non-CE
22	1087811	Harness, Transformer Vat #4#5 430/530 Non-CE
23	<a href="#">1088373</a>	Harness, Transformer Vat #2 230/330 CE Export
24	<a href="#">1088372</a>	Harness, Transformer Vat #1 230/330 CE Export
25	1088374	Harness, Transformer Vat #3 330 CE Export
26	1088375	Harness, Transformer Vat #4/5 430/530 CE Export
27	1088376	Harness, Transformer Vat #4/5 430/530 CE Export
*	1086452	Harness Assembly Transformer to Ground with 3-wire Snap CE Export
*	WIR1198	Wire Assembly, 430/530 Transformer Box (used in Item E)
*	WIR1223	Wire Assembly, 230/430 Transformer/Filter Box (used in Item A)
*	WIR1224	Wire Assembly, LOV-T Dom/Filter Box (used in Item B)
*	WIR1234	Wire Assembly, FQ4000 Transformer Box CE (used in Item C and D)
*	WIR1235	Wire Assembly, FQ430/530 Transformer Box CE (used in Item F)

\* Not illustrated √ Recommended parts.

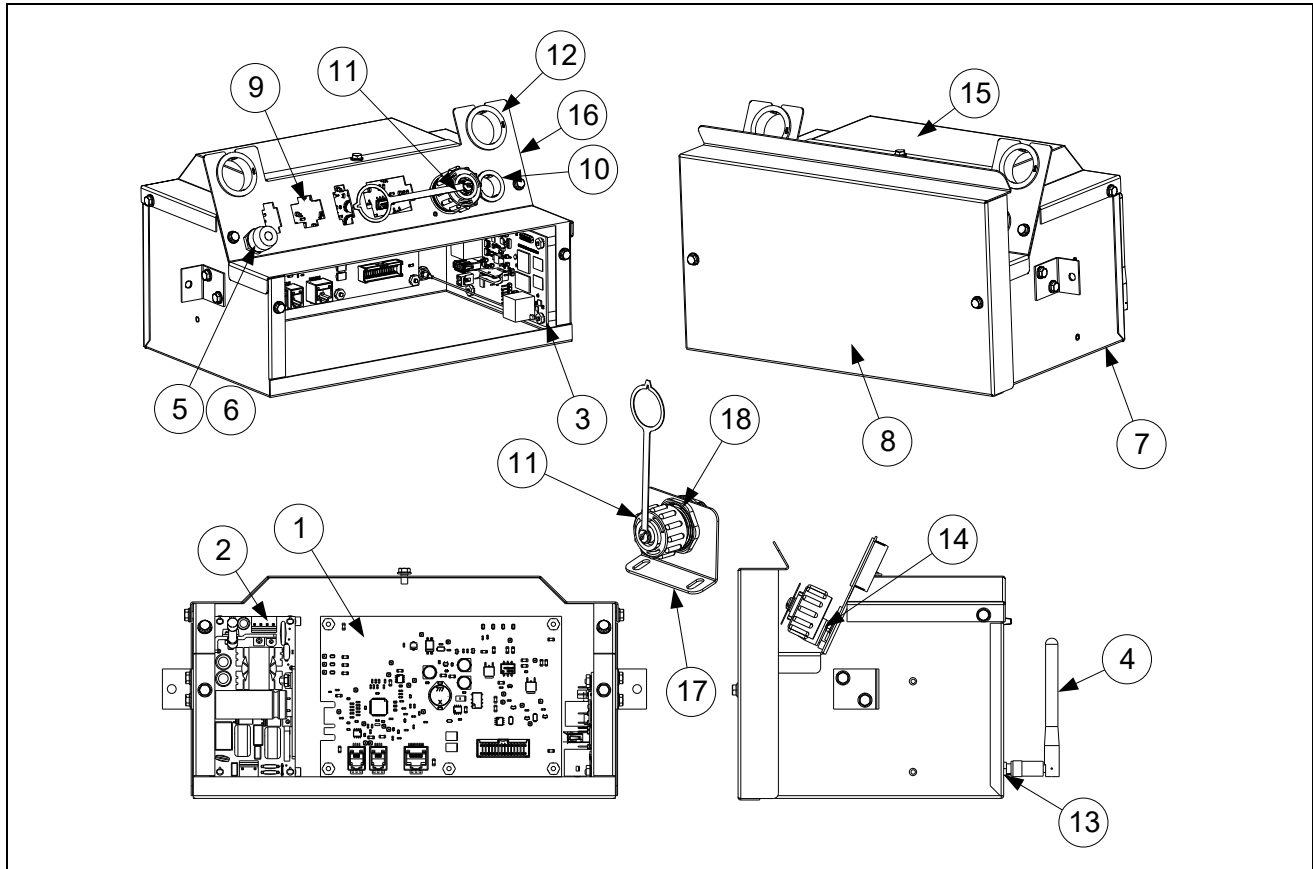
### 1.5.3 FIB (Filter Interface Board) Auto Top Off/Filter Box Components (prior to 06/2019)



ITEM	PART #	COMPONENT
	1087716SP	Box Assembly, ATO/FIB Filter w/ KCCM
√ 1	1087513SP	Board, FIB w/ Software <b>General Market / Burger King</b>
	1087535SP	Board, FIB w/ Software <b>Taco Bell</b>
√ 2	8263684	Power Supply, 24VDC 130W ATO, Actuators, Filter Pump, Top Off Pump
√ 3	8075974	Power Supply, 24VDC, 15W for KCCM SUI board
*	1087247	Holder Assembly, Fuse with Leads (used with the KCCM SUI Board)
√ 4	1088447SP	PCB, Assy FQ4000 KCCM/SUI <b>Taco Bell</b>
	1088446SP	PCB, Assy FQ4000 KCCM/SUI <b>General Market</b>
√ 5	8075570	Fuse, 250VAC 3.5A Fast Acting
6	8071321	Holder, Fuse
7	8160217	Insulation, Terminal Block Paper
8	8101164	Block, One-Piece Screwless Terminal
9	8076240	Harness, Bulk Oil/ATO/FIB (J1 (30-pin) FIB to illustrated connectors inside FIB Box)
10	8075967	Coupler, 8PBC to 8PBC (Ethernet RJ45)
11	8075970	Cap, Dust
12	8075975	Antenna
13	8076225	Cable, U. FL to RP-SMA Bulkhead (attaches to Item 4)
14	8075969	Cable, USB Receptacle Mount (USB end attaches to Item 4)
15	8071926	Bushing, .875 Split
16	1087715	Box, Assembly
17	2401658	Cover, ATO/Filter Box
		<b>See Wiring Diagrams in FQG30-T Service Manual for cable locations</b>
*	8075632	Terminator, CAN End Communication RJ11 (FIB J4)
*	8075977	Cable, RJ45 Cat5E 7.87" (From Item 10 to Item 4)
*	8076242	Harness, KCCM SUI Communication/Power (RJ45 item #4 to J4 FIB and to item #3)
*	8076241	Harness, Power Supply (From item #2 to Item 8)
*	8075551	Cable, C-Bus Right SIB (J7) to FIB (Filtration Interface Board) (J3)
*	8075810	Cable, FIB to VIB Actuator Power (used from FIB item #1 (J2) to VIB (J4) and from VIB (J3) to VIB (J4))

\* Not illustrated √ Recommended parts.

### 1.5.3.1 FIB (Filter Interface Board) Auto Top Off/Filter Box Components (06/2019-06/2021)

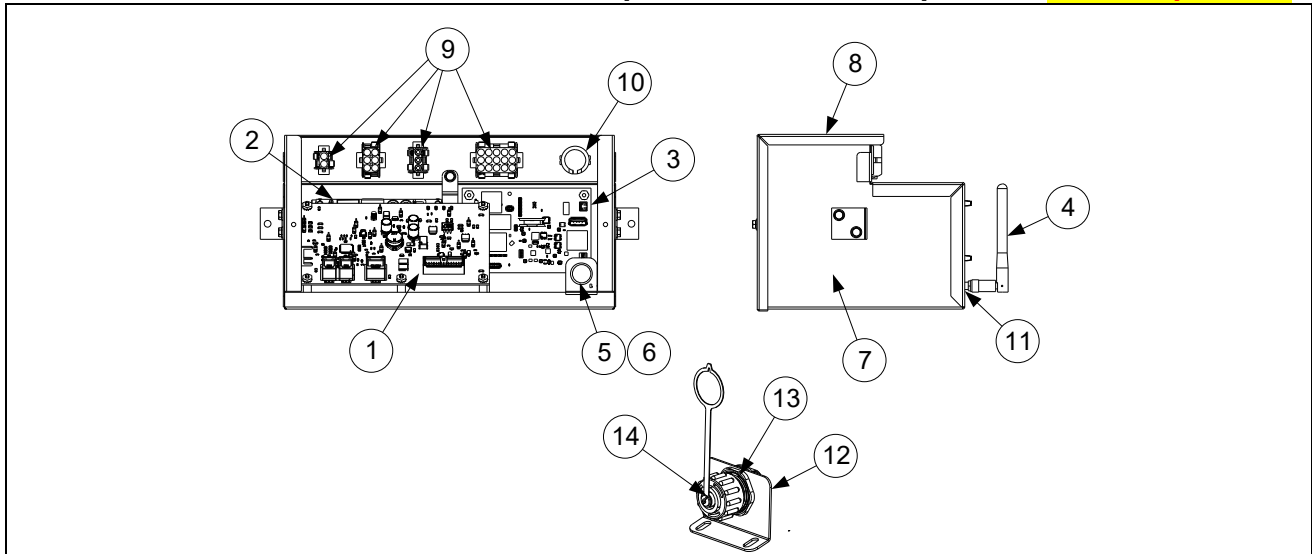


ITEM	PART #	COMPONENT
	1088448SP	Box Assembly, ATO/FIB Filter <b>General Market / Burger King</b>
	1088449SP	Box Assembly, ATO/FIB Filter <b>Taco Bell</b>
√ 1	<a href="#">1087513SP</a>	Board, FIB w/ Software <b>General Market / Burger King</b>
	<a href="#">1087535SP</a>	Board, FIB w/ Software <b>Taco Bell</b>
√ 2	<a href="#">8263684</a>	Power Supply, 24VDC 130W ATO, Actuators, Filter Pump, Top Off Pump
√ 3	<a href="#">1088447SP</a>	PCB, Assy FQ4000 KCCM/SUI <b>Taco Bell</b>
	<a href="#">1088446SP</a>	PCB, Assy FQ4000 KCCM/SUI <b>General Market</b>
4	<a href="#">8075975</a>	Antenna
√ 5	<a href="#">8075570</a>	Fuse, 250VAC 3.5A Fast Acting
6	<a href="#">8071321</a>	Holder, Fuse
7	<a href="#">1088296</a>	Box, Assembly
8	<a href="#">2401845</a>	Shield, Topoff Front Cover
9	<a href="#">8076409</a>	Harness, Bulk Oil/ATO/FIB/JIB Reset (J1 (30-pin) FIB to external connections)
10	<a href="#">8071926</a>	Bushing, .875 Split
11	<a href="#">8075970</a>	Cap, Dust
12	<a href="#">8072469</a>	Bushing 1" I.D.
13	<a href="#">8076225</a>	Cable, U. FL to RP-SMA Bulkhead (attaches item 4 to Item 3)
14	<a href="#">8075969</a>	Cable, USB Receptacle Mount (USB end attaches to Item 3)
15	<a href="#">2401843</a>	Cover, Topoff Box
16	<a href="#">2401844</a>	Cover, Front Topoff
	<a href="#">1088356</a>	Ethernet Assy, Rear Platform
17	<a href="#">2401863</a>	Bracket, Ethernet Platform
18	<a href="#">8075967</a>	Coupler, 8PBC to 8PBC (Ethernet RJ45)
*	<a href="#">8074056</a>	Connector, 3-Wire Snap

ITEM	PART #	COMPONENT
*	WIR1179	Wire Assy, FQLAU Filter/ATO Power (Connects item 1 and item 2)
		<b>See Wiring Diagrams in FQG30-T Service Manual for cable locations</b>
√ *	<a href="#">8075632</a>	Terminator, CAN End Communication RJ11 (FIB J4)
*	8075977	Cable, RJ45 Cat5E 7.87" (From Item 10 to Item 4)
*	<a href="#">8076249</a>	Harness, Filter/ATO Power/Control 24" (C5 (6-pin) Rear FIB Box - C5 (6-pin) Transformer Box)
*	<a href="#">8076242</a>	Harness, KCCM SUI Communication/Power (RJ45 item #4 to J4 FIB and to item #3)
*	<a href="#">8076241</a>	Harness, Power Supply (From item #2 to Snap Connectors)
*	<a href="#">8075551</a>	Cable, C-Bus Right SIB (J7) to FIB (Filtration Interface Board) (J3)
*	<a href="#">8076315</a>	CABLE, XL VIB Actuator Power (used from FIB item #1 (J2) to VIB (J4)
*	<a href="#">8075810</a>	Cable, FIB to VIB Actuator Power (used from FIB item #1 (J2) to VIB (J4) and from VIB (J3) to VIB (J4)

\* Not illustrated √ Recommended parts.

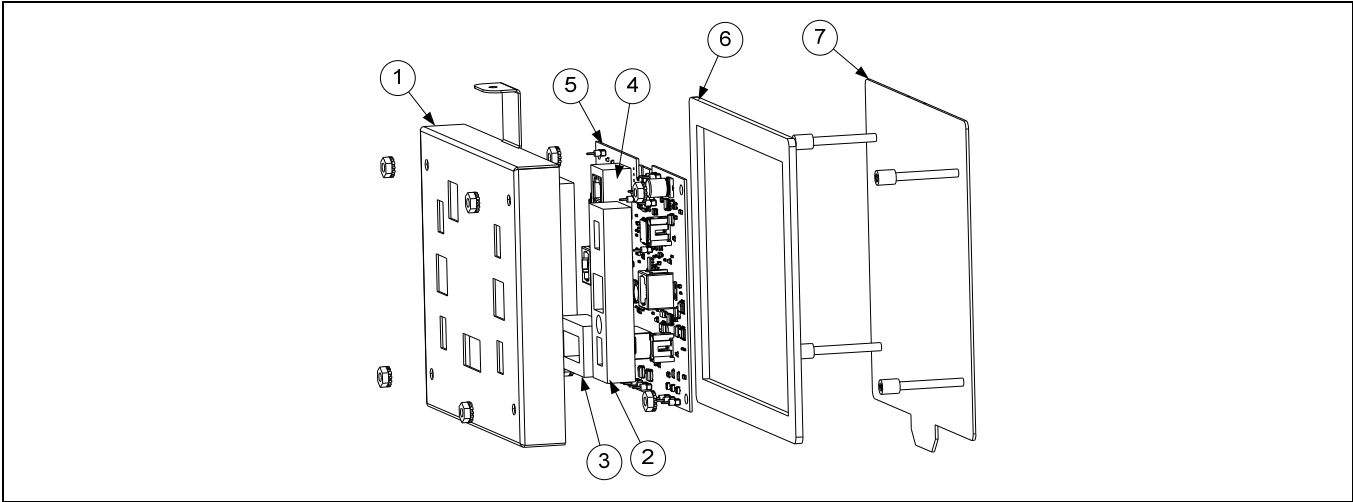
### 1.5.3.2 FIB (Filter Interface Board) Auto Top Off/Filter Box Components (07/2021-present)



ITEM	PART #	COMPONENT
	130000274SP	Box Assembly, ATO/FIB Filter <b>General Market / Burger King</b>
	130000276SP	Box Assembly, ATO/FIB Filter <b>Taco Bell</b>
√ 1	1087513SP	Board, FIB w/ Software <b>General Market / Burger King</b>
	1087535SP	Board, FIB w/ Software <b>Taco Bell</b>
√ 2	8263684	Power Supply, 24VDC 130W ATO, Actuators, Filter Pump, Top Off Pump
√ 3	1088446SP	PCB, Assy FQ4000 KCCM/SUI <b>General Market</b>
	1088447SP	PCB, Assy FQ4000 KCCM/SUI <b>Taco Bell</b>
4	8075975	Antenna
√ 5	8075570	Fuse, 250VAC 3.5A Fast Acting
6	8071321	Holder, Fuse
7	130000120	Box, Assembly
8	130000273	Cover, Topoff
9	8076409	Harness, Bulk Oil/ATO/FIB/JIB Reset (J1 (30-pin) FIB to external connectors inside FIB Box)
10	8071926	Bushing, .875 Split
11	8076225	Cable, U. FL to RP-SMA Bulkhead (attaches item 4 to Item 3)
12	2401863	Bracket, Ethernet Platform
13	8075967	Coupler, 8PBC to 8PBC (Ethernet RJ45)
14	8075970	Cap, Dust
*	8074056	Connector, 3-Wire Snap
*	WIR1179	Wire Assy, FQLAU Filter/ATO Power (Connects item 1 and item 2)
		<b>See Wiring Diagrams in FQG30-T Service Manual for cable locations</b>
√ *	8075632	Terminator, CAN End Communication RJ11 (FIB J4)
*	8076241	Harness, Power Supply (From item #2 to Snap Connectors)
*	8076249	Harness, Filter/ATO Power/Control 24" (C5 (6-pin) Rear FIB Box - C5 (6-pin) Transformer Box)
*	8076242	Harness, KCCM SUI Communication/Power (RJ45 item #4 to J4 FIB and to item #3)
*	8075551	Cable, C-Bus Right SIB (J7) to FIB (Filtration Interface Board) (J3)
*	8075810	Cable, FIB to VIB Actuator Power (used from FIB item #1 (J2) to VIB (J4) and from VIB (J3) to VIB (J4))

\* Not illustrated √ Recommended parts.

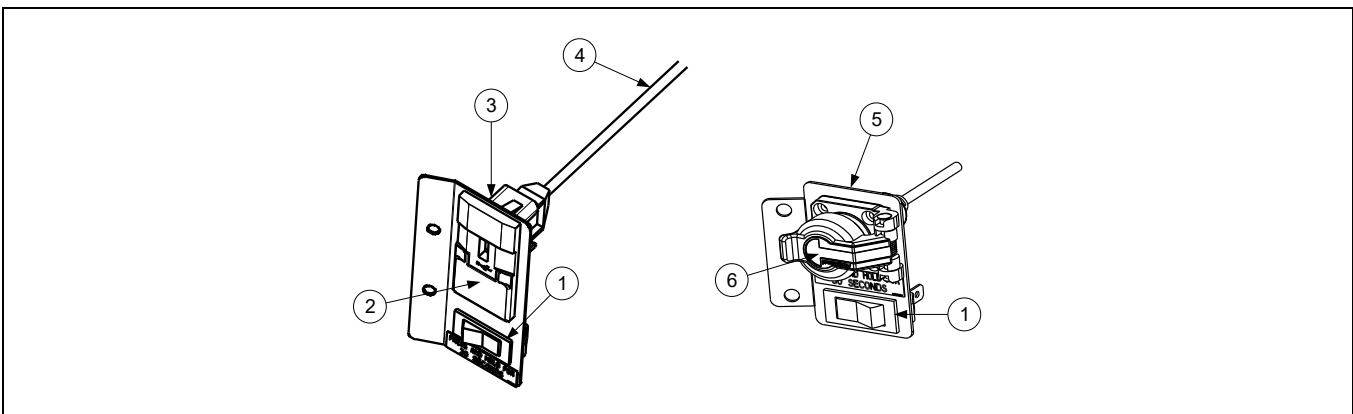
### 1.5.4 VIB (Valve Interface Board) Components



ITEM	PART #	COMPONENT
√	1087537	VIB Board Assembly
1	8242346	Cover, VIB Board Housing
2	8161015	Gasket, Actuator Power VIB
3	8161013	Gasket, 20 pin VIB Connector
4	8161014	Gasket, P-Bus VIB Connector
5	1087534SP	Board, VIB with SW
6	8160820	Seal, Linear Actuator Board
7	1087280	Panel, Assy VIB Box Bottom Stud

√ Recommended parts.

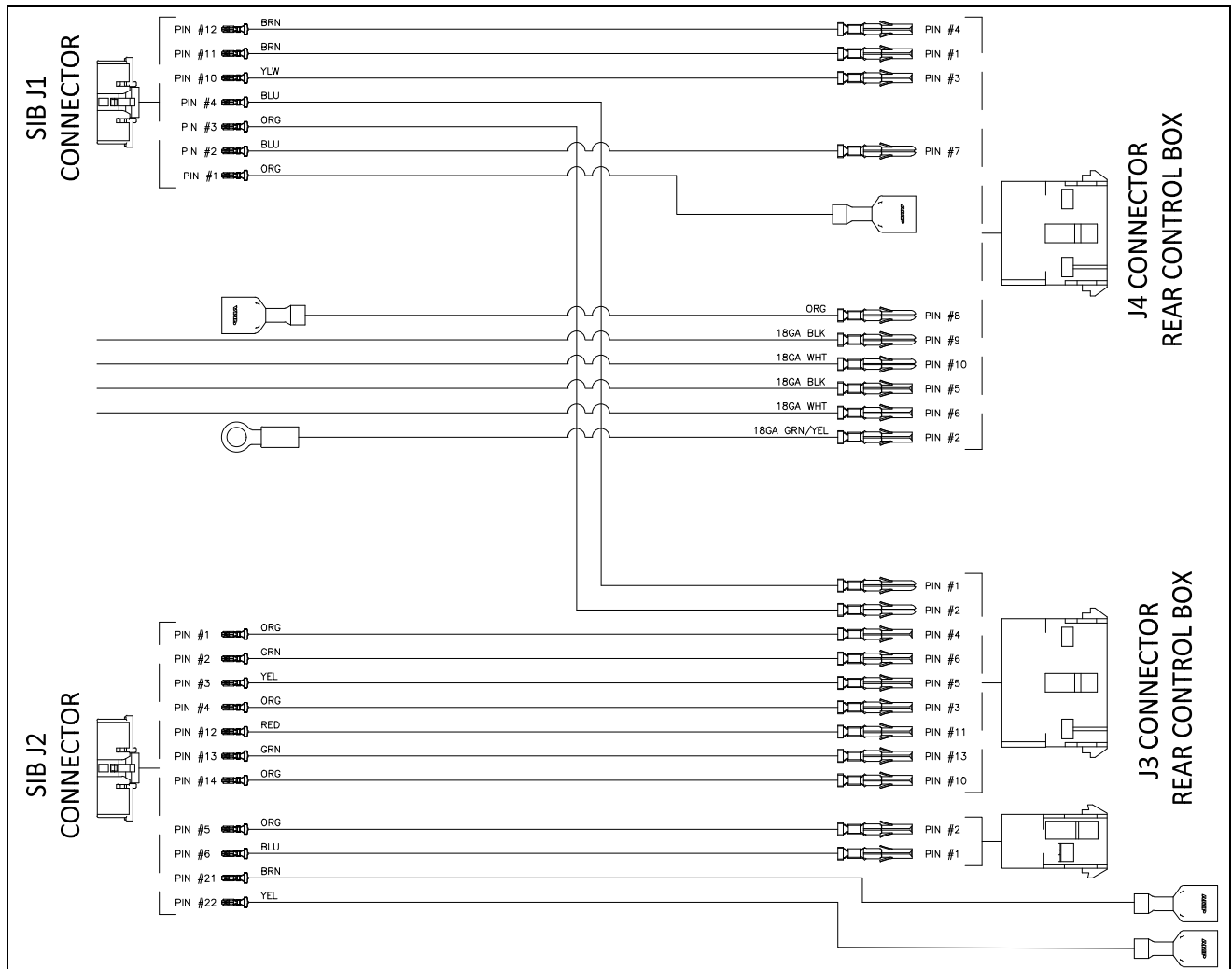
### 1.5.5 Power Reset Switch and USB Connector



ITEM	PART #	COMPONENT
	1087802	Bracket Assy, USB Mounting FQ4000 Gas
1	8072659	Switch
2	8074989	Bezel, USB Port
3	2207520	Plate, Backing USB Bezel
4	8074990	Cable, USB
	130000192	Bracket Assy, USB Mounting Gas
5	2602358	Bracket, USB/RESET
6	8105041	USB, Self-Closing Flange

## 1.6 Wiring

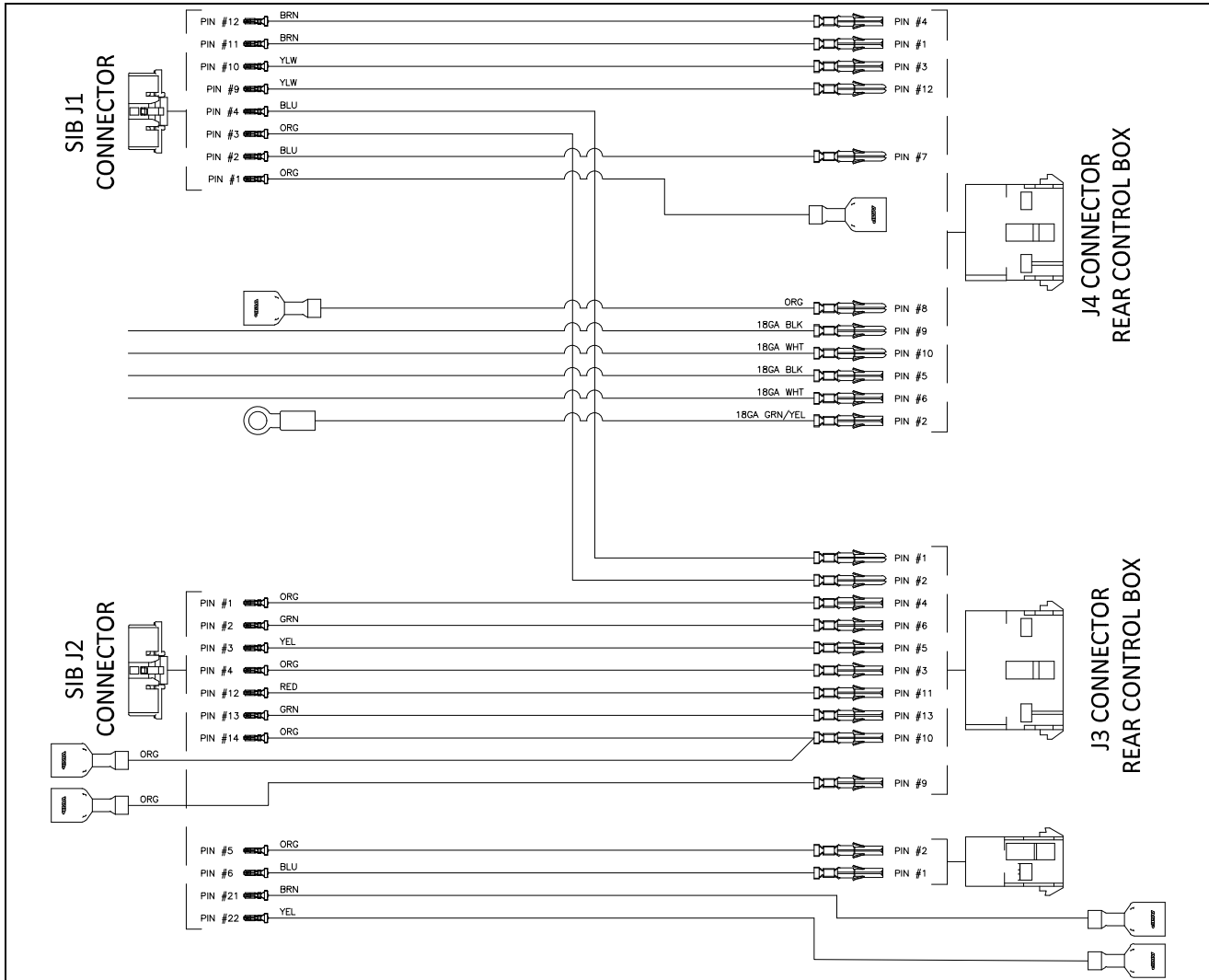
### 1.6.1 Wiring Harness Full Vat - SIB to Rear of Component Box (Fryer w/out OIB)



ITEM	PART #	COMPONENT
	8076243	Harness, Controls FQ4000 Gas Full Vat

See the FQG30-T Service Manual for wiring diagram.

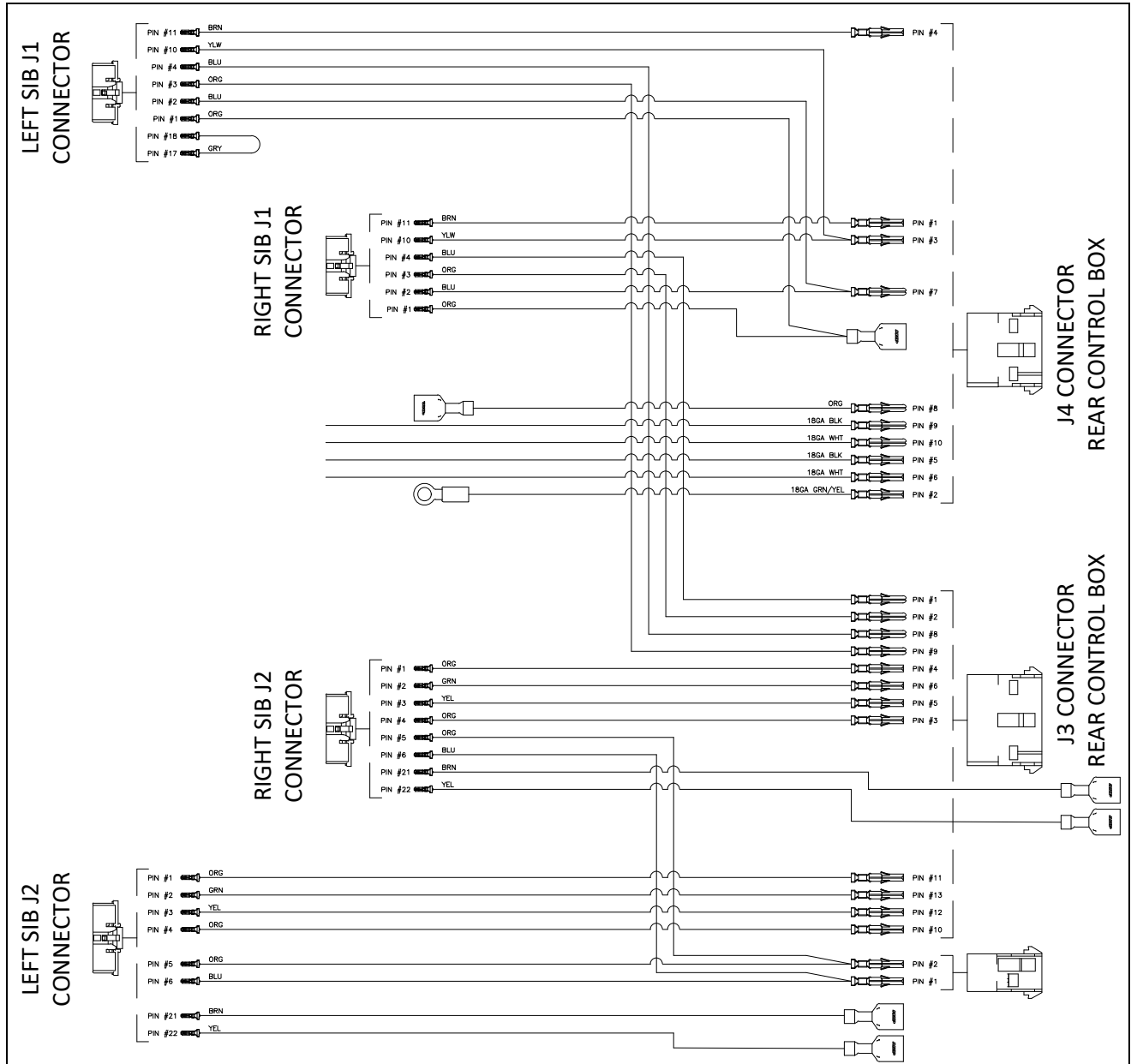
## 1.6.2 Wiring Harness Full Vat - SIB to Rear of Component Box (Fryer with OIB)



ITEM	PART #	COMPONENT
	8076364	Harness, Controls LOV-T Gas Full Vat

See the FQG30-T Service Manual for wiring diagram.

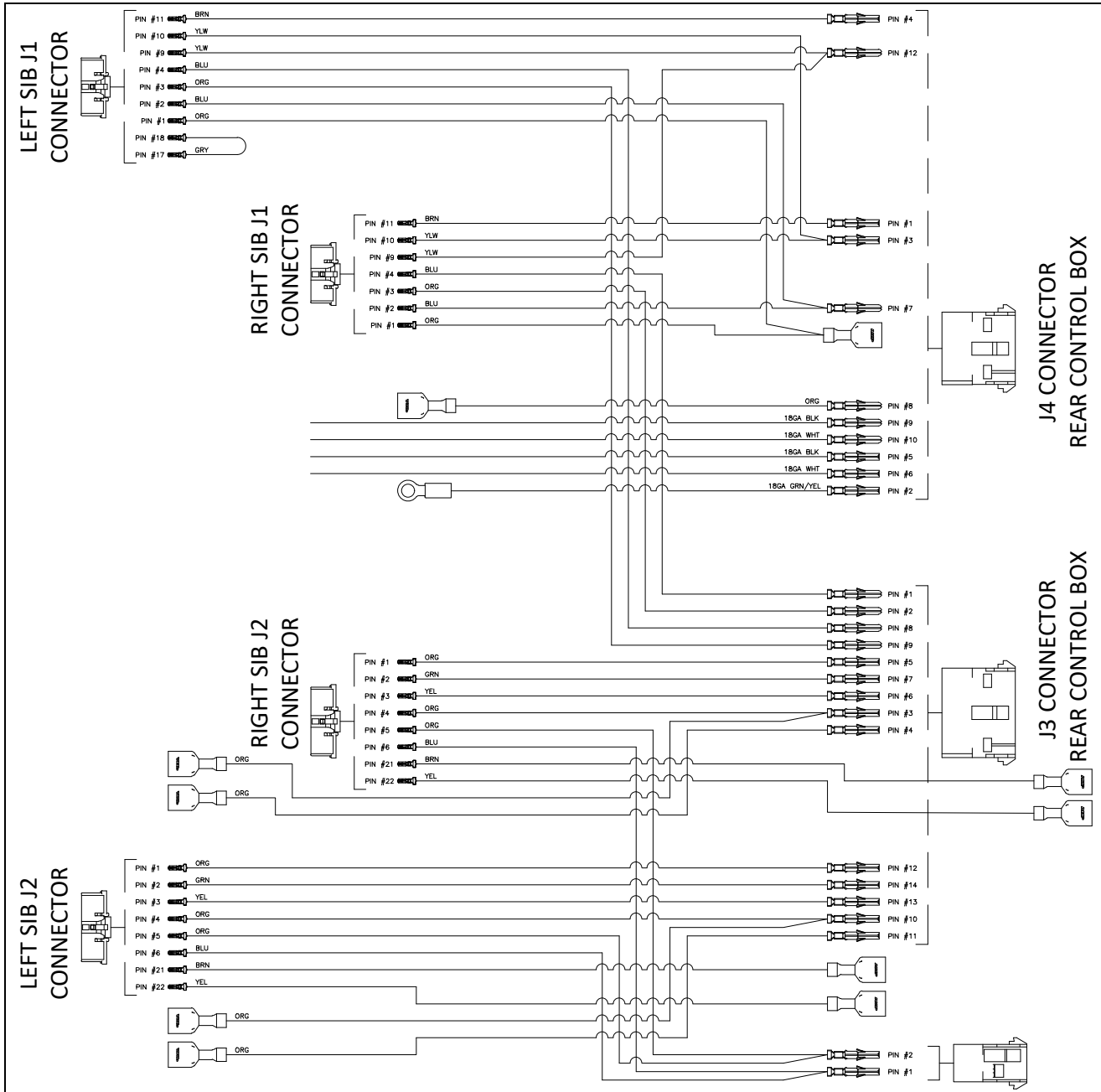
### 1.6.3 Wiring Harness Dual Vat - SIB to Rear of Component Box (Fryer w/out OIB)



ITEM	PART #	COMPONENT
	8076244	Harness, Controls FQ4000 Gas Dual Vat

See the FQG30-T Service Manual for wiring diagram.

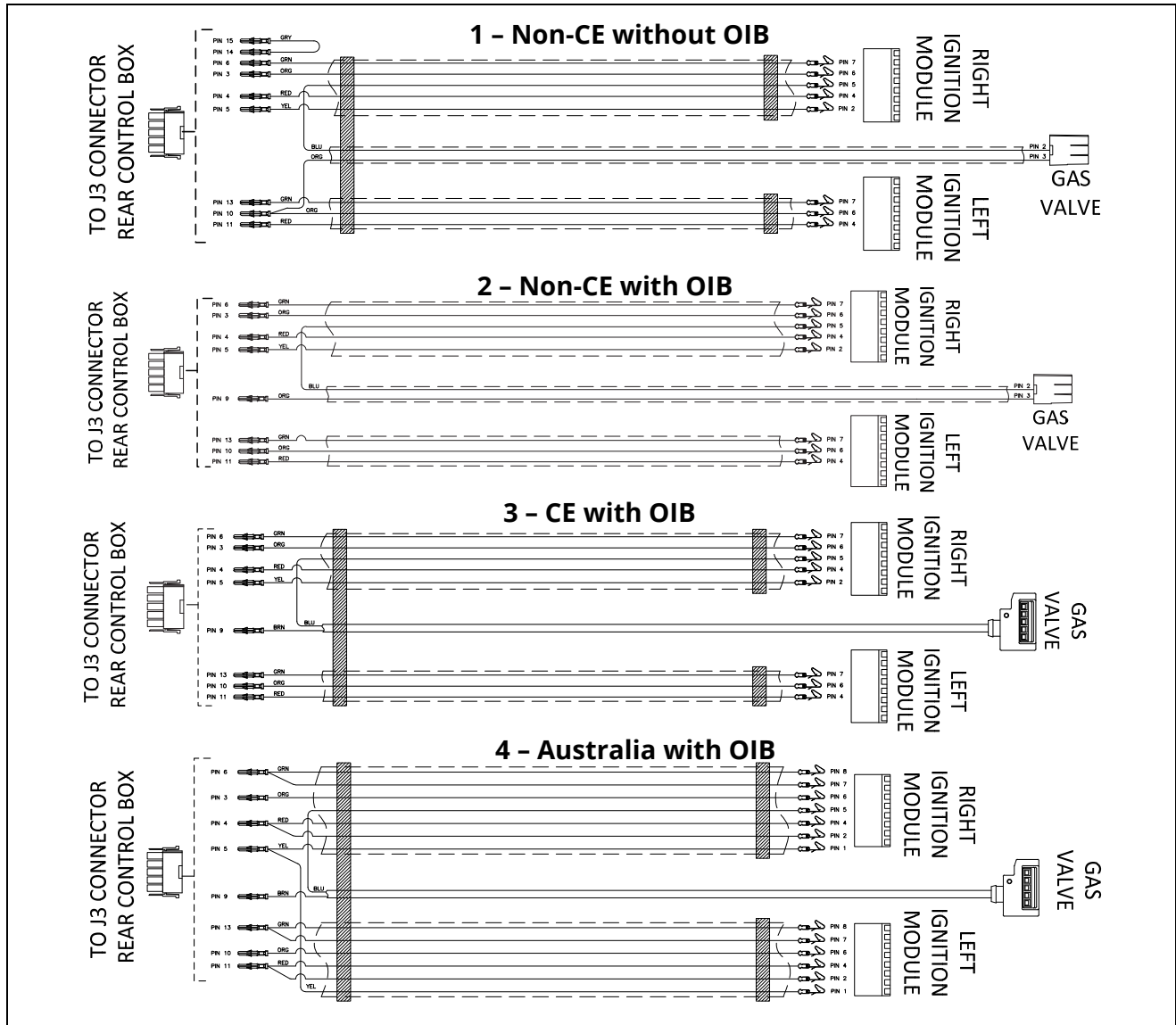
### 1.6.4 Wiring Harness Dual Vat - SIB to Rear of Component Box (Fryer with OIB)



ITEM	PART #	COMPONENT
	8076365	Harness, Controls LOV-T Gas Dual Vat

See the FQG30-T Service Manual for wiring diagram.

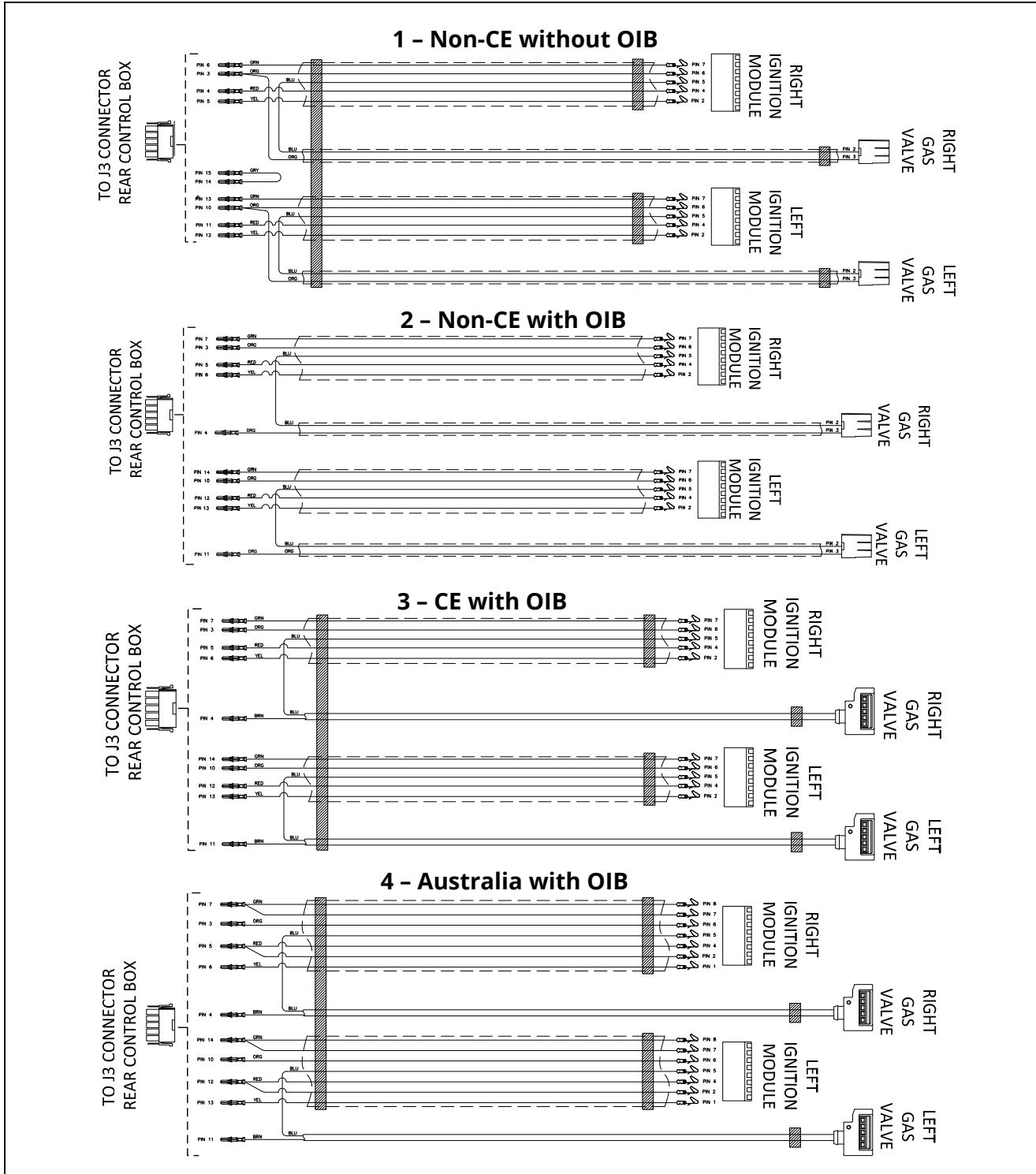
## 1.6.5 Ignition Wiring Harness Full Vat - Control Box to Components



ITEM	PART #	COMPONENT
1	<a href="#">8076247</a>	Harness, Ignition/Controls Wiring Gas Full Vat Non-CE without OIB Fenwal
2	<a href="#">8076366</a>	Harness, Ignition/Controls Wiring Gas Full Vat Non-CE with OIB Fenwal
3	<a href="#">8076377</a>	Harness, Ignition/Controls Wiring Gas Full Vat CE with OIB Fenwal
4	<a href="#">8076429</a>	Harness, Ignition/Controls Wiring Gas Full Vat Australia with OIB Fenwal

**NOTE:** See the FQG30-T Service Manual for wiring diagrams.

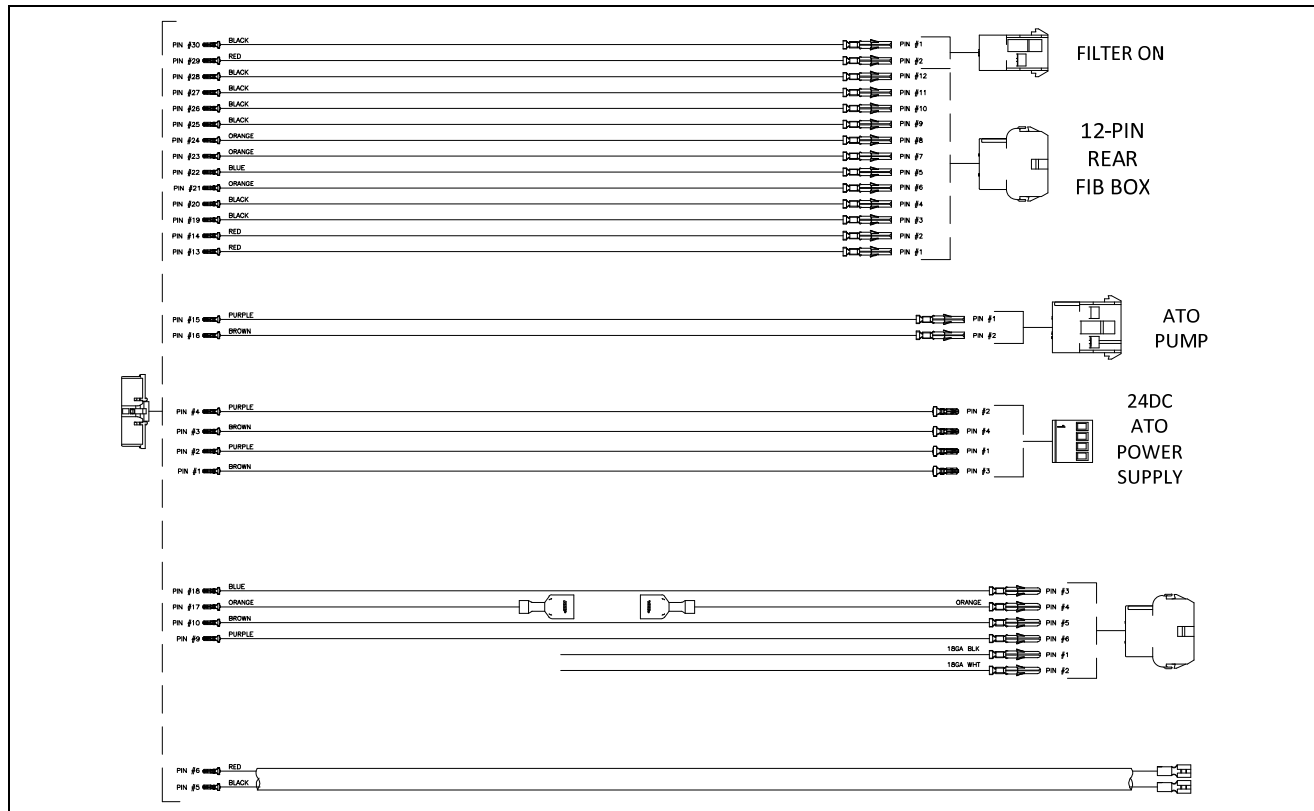
## 1.6.6 Ignition Wiring Harness Dual Vat - Control Box to Components



ITEM	PART #	COMPONENT
1	8076248	Harness, Ignition/Controls Wiring Gas Dual Vat Non-CE without OIB Fenwal
2	<a href="#">8076367</a>	Harness, Ignition/Controls Wiring Gas Dual Vat Non-CE with OIB Fenwal
3	8076368	Harness, Ignition/Controls Wiring Gas Dual Vat CE with OIB Fenwal
4	8076430	Harness, Ignition/Controls Wiring Gas Dual Vat Australia with OIB Fenwal

**NOTE:** See the FQG30-T Service Manual for wiring diagrams.

## 1.6.7 FIB Box Wiring Harness



ITEM	PART #	COMPONENT
1	8076240	Harness, Bulk Oil, Topoff /FIB ( <i>Prior to 06/2019</i> )
2	8076409	Harness, Bulk Oil, Topoff /FIB ( <i>After 06/2019</i> )

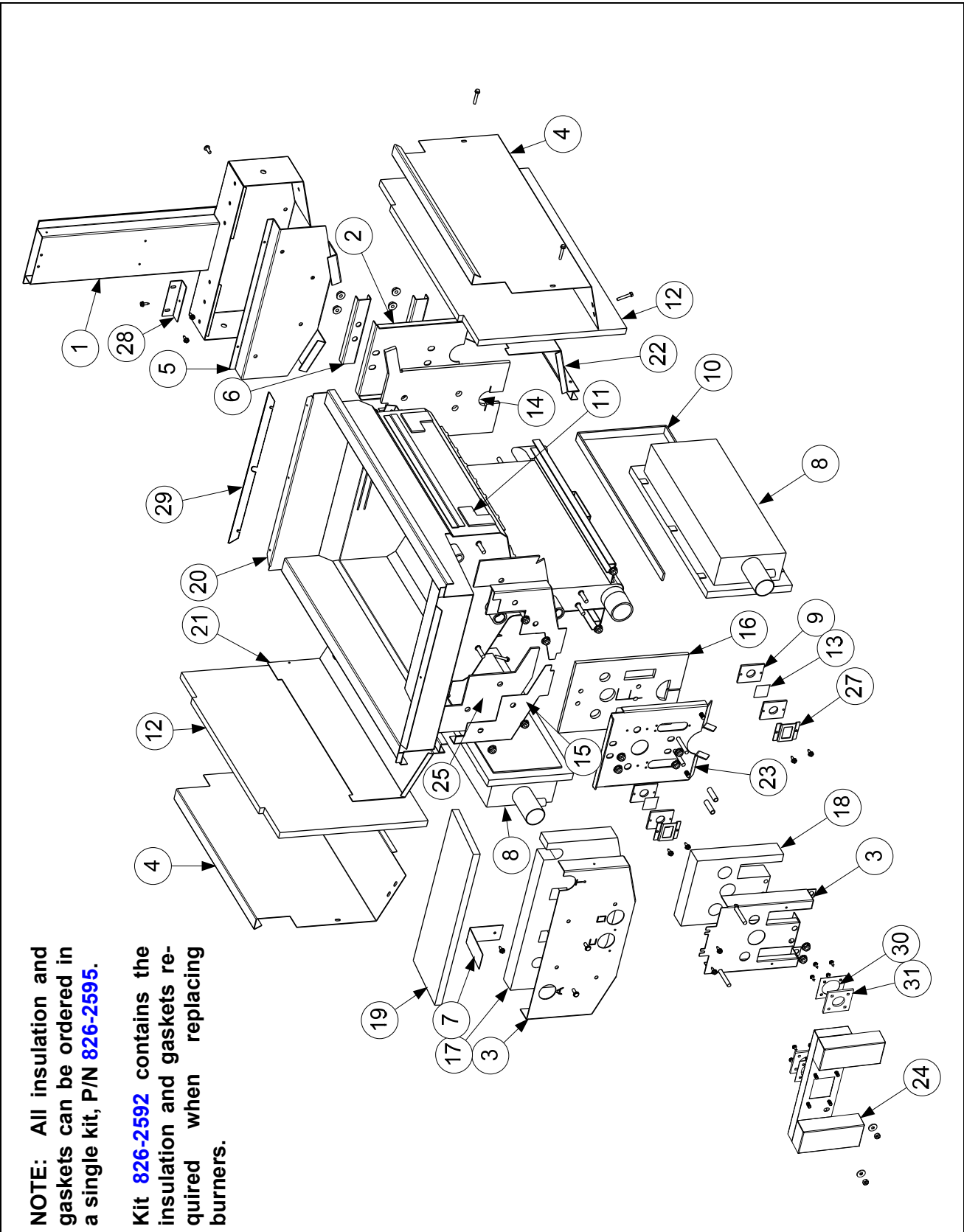
## 1.6.8 Miscellaneous Wiring Harnesses and Cord Sets

PART #	COMPONENT
8076245	Harness, Vat AC Power 60" (J4 (12-pin) Rear Control Box - C1 (6-pin) Transformer Box)
8076249	Harness, Filter/ATO Power/Control 24" (C5 (6-pin) Rear FIB Box - C5 (6-pin) Transformer Box)
8076246	Harness, Basketlift 72" (J4 Rear Control Box - 12-pin Basketlift)
8069678SP	Plug Assembly, CE Gas Valve
8067742SP	Cord set, 120V Fryer and Motor with Ring Terminals 68"
1060516	Cord set, 220-250V Non-CE/Export Fryer and Motor with Ring Terminals 68"

**NOTE:** See the FQG30-T Service Manual for wiring diagrams.

## 1.7 Frypots and Associated Components

### 1.7.1 Full-Vat Frypot Components



### 1.7.1 Full-Vat Frypot Components cont.

ITEM	PART #	COMPONENT
	1081752SP	Frypot Assembly Full-Vat (NAT/PRO)
	8262595	Insulation Kit, Complete Full-Vat
	8262592	Insulation Kit, Burner Full-Vat
1	1080925	Flue Assembly, Full-Vat
2	8238175	Back, Lower Full-Vat Combustion Chamber
3	2206529	Retainer, Full-Vat Upper Insulation (modified from shown, now one piece)
4	2207834	Retainer, Outer Frypot
5	2306960	Plate, FV Collector Mounting
6	2202851	Brace, FV Rear Insulation
7	2202920	Brace, Foam Deck Insulation
√ 8	8103435	Burner, Universal Replacement
9	8120356	Insulation, Burner Sight Glass
10	8160900	Insulation, Burner
11	8120706	Insulation, Upper Burner Rail
12	8121029	Insulation, Combustion Chamber Side
13	8140048SP	Glass, Burner Sight
14	8160837	Insulation, FV Rear Lower
15	8160731	Insulation, FV LH/RH Front Seal
16	8160976	Insulation, FV Lower Inner Front
17	8160733	Insulation, FV Front Upper
18	8160978	Insulation, FV Outer Front
19	8160746	Insulation, Foam Deck
20	8238932	Frypot, FV GL30
21	8238193	Retainer, FV LH Upper Burner
22	8238194	Retainer, FV RH Upper Burner
23	8239639	Retainer, FV Front Combustion Insulation
24	8238574	Plenum, Full-Vat ( <b>use 8238590 for CE units and for Export Non-CE units</b> )
25	8242164	Front Upper Seal Weldment, FV LH
26	8242165	Front Upper Seal Weldment, FV RH
27	9001031	Retainer, Burner Sight Glass
28	9300818	Bracket, Flue to Pot
29	9004253	Strip, Fluecap Retainer
30	9001049	Retainer, Plenum Gasket
31	8160057	Gasket, Plenum
*	8160981	Gasket, Ignitor
*	8161122	Seal, Frypot Plenum Mounting
*	8090390	Elbow, 90° Male 1/8" to 3/16" (used with Pressure Switches)
*	8161049	Gasket, Plenum/Blower (used between plenum and blower)
*	9102474	Pot-to-Pot Gap Clip

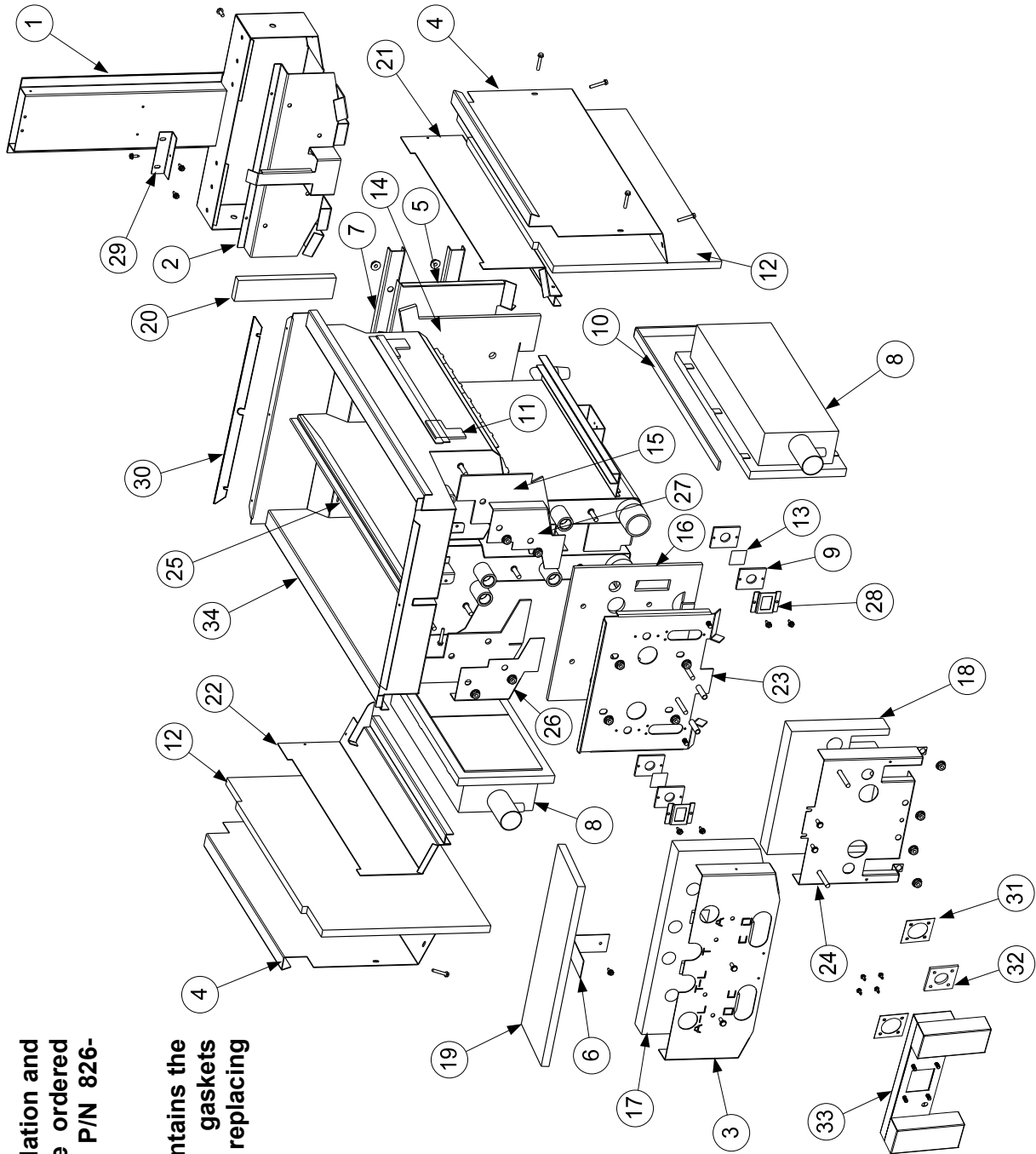
\* Not illustrated.

√ Recommended parts.

## 1.7.2 Dual-Vat Frypot Components

**NOTE:** All insulation and gaskets can be ordered in a single kit, P/N 826-2596.

**Kit 826-2593** contains the insulation and gaskets required when replacing burners.



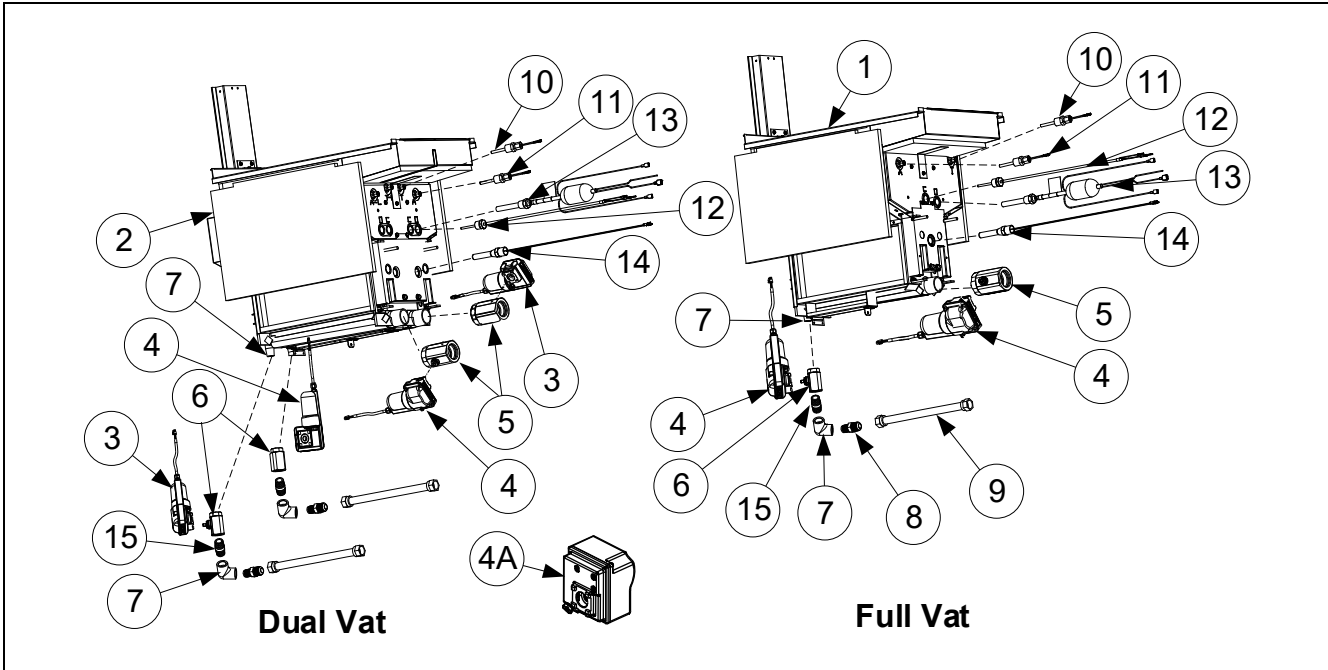
## 1.7.2 Dual-Vat Frypot Components cont.

ITEM	PART #	COMPONENT
*	1081753SP	Frypot Assembly Dual-Vat (NAT/PRO)
*	8262596	Insulation Kit, Complete Dual-Vat
√ *	8262593	Insulation Kit, Burner Dual-Vat
1	1080926	Flue Assembly, Dual-Vat
2	1067960	Plate Assembly, Dual-Vat Collector
3	2206530	Retainer, Dual-Vat Upper Insulation
4	2207835	Retainer, Dual-Vat Outer Frypot
5	8238176	Back, Dual-Vat Lower Combustion Chamber
6	2202920	Brace, Foam Deck Insulation
7	2202972	Brace, Dual-Vat Rear Insulation
√ 8	8103435	Burner, Universal Replacement
9	8120356	Insulation, Burner Sight Glass
10	8160900	Insulation, Burner
11	8120706	Insulation, Upper Burner Rail
12	8121029	Insulation, Combustion Chamber Side
13	8140048SP	Glass, Burner Sight
14	8160838	Insulation, Dual-Vat Rear Lower
15	8160741	Insulation, Dual-Vat LH/RH Front Seal
16	8160977	Insulation, Dual-Vat Lower Inner Front
17	8160743	Insulation, Dual-Vat Front Upper
18	8160979	Insulation, Dual-Vat Outer Front
19	8160746	Insulation, Foam Deck
20	8120688	Insulation, Flue Collection
21	8238196	Retainer, Dual-Vat RH Upper Burner
22	8238195	Retainer, Dual-Vat LH Upper Burner
23	8238578	Retainer, Dual-Vat Front Insulation
24	8238576	Retainer, Dual-Vat Outer Front
25	8241796	Riser W/A Dual-Vat Pot
26	8242166	Dual-Vat LH Upper W/A Seal
27	8242167	Dual-Vat RH Upper W/A Seal
28	9001031	Retainer, Sight Glass
29	9300818	Bracket, Flue to Pot
30	9004253	Strip, Fluecap Retainer
31	9001049	Retainer, Plenum Gasket
32	8160057	Gasket, Plenum
*	8160981	Gasket, Ignitor
33	8238573	Plenum, Dual-Vat ( <b>use 8238589 for CE units and for Export Non-CE units</b> )
*	8161049	Gasket, Plenum/Blower (used between plenum and blower)
*	8161122	Seal, Frypot Plenum Mounting
*	8090390	Elbow, 90° Male 1/8" to 3/16" (used with Pressure Switches)
34	8238942	Frypot, Dual-Vat GL30
*	9102474	Pot-to-Pot Gap Clip

\* Not illustrated.

√ Recommended parts.

### 1.7.3 Frypot Assemblies and Associated Parts

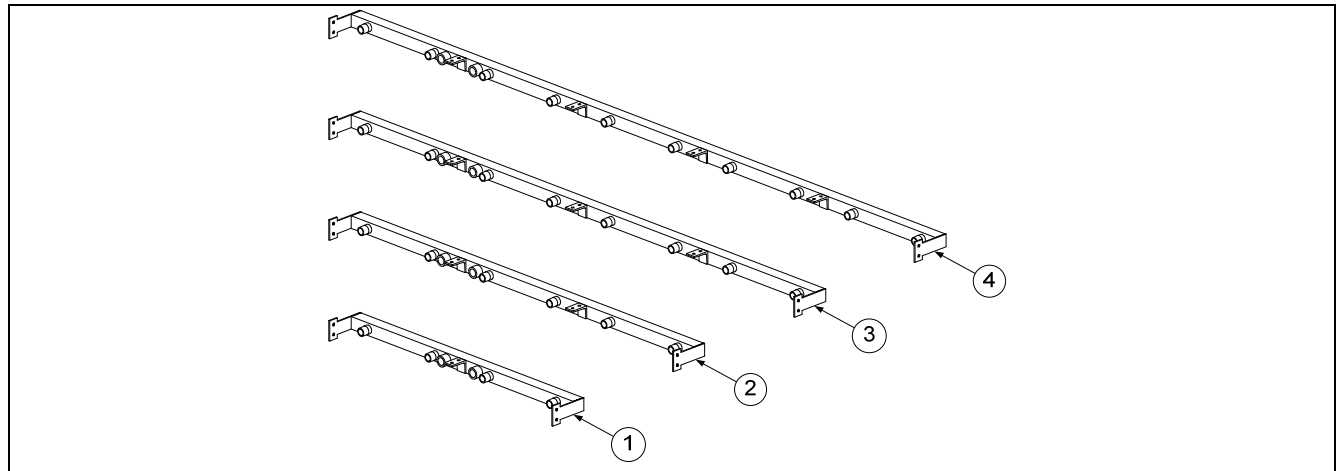


ITEM	PART #	COMPONENT
1	1081752SP	Frypot Assembly, Full-Vat Natural/Propane
2	1081753SP	Frypot Assembly, Dual-Vat Natural/Propane
✓ 3	8075809	Actuator, Rotary 24VDC (#1) <b>(Blue)</b>
✓ 4	8075808	Actuator, Rotary 24VDC (#2) <b>(Black)</b>
4A	130013720	Actuator, Rotary 24VDC <b>(Gray Square)</b>
✓ 5	8104353	Valve, 1/4" NPT Drain
*	8160544	O-Ring (Drain)
✓ 6	8103754	Valve, 1/2" NPT Return
7	8130062	Elbow, 1/2" 90°
8	8101668	Adaptor, Male 5/8" OD x 1/2"
9	8101055	Flexline, 5/8" OD x 11.50" Long
✓ 10	8263286	Probe, ATO (Topoff) RTD Kit
✓ 11	8263287	Probe, VIB (Auto Filtration) RTD Kit
*	8130617	Fitting, 3/16" CC x 1/4" (Compression fitting used in probe kits)
*	8158000	Loctite 567, Tube 6 ML
✓ 12	8263285	Probe, Temperature Cooking Kit
✓ 13	8076384	Sensor Assy, Oil 120V (only in units with optional OIB sensor)
	8076385	Sensor Assy, Oil 220V <b>International</b> (only in units with optional OIB sensor)
	8076386	Sensor Assy, Oil 230V <b>International</b> (only in units with optional OIB sensor)
	8076387	Sensor Assy, Oil 240V/250V <b>International</b> (only in units w/optional OIB sensor)
✓ 14	8261177	Thermostat Assembly, HE High-Limit 425°F/218°C Kit
✓ 15	8130022	Nipple, 1/2" x Close NPT

**Always replace with the same type/color of actuator that was removed.**

\* Not illustrated.  
 ✓ Recommended parts.

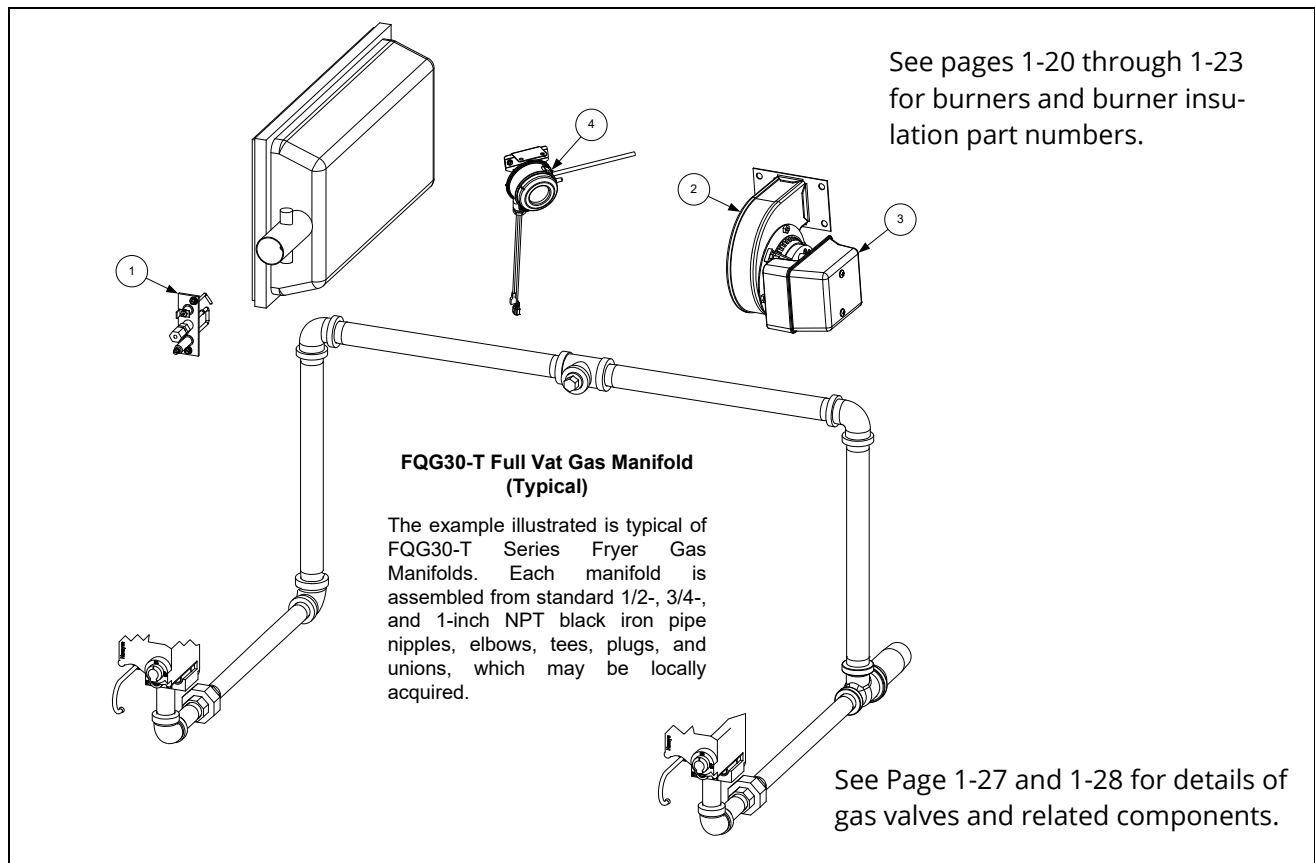
## 1.8 Oil Return Manifolds



ITEM	PART #	COMPONENT
1	8105025	Manifold, Two-Station Fryer
2	8105026	Manifold, Three-Station Fryer
3	8105027	Manifold, Four-Station Fryer
4	8105022	Manifold, Five-Station Fryer
*	8130907	Cap, 15/16" Valve

\* Not illustrated

## 1.9 Gas Supply and Combustion System Components



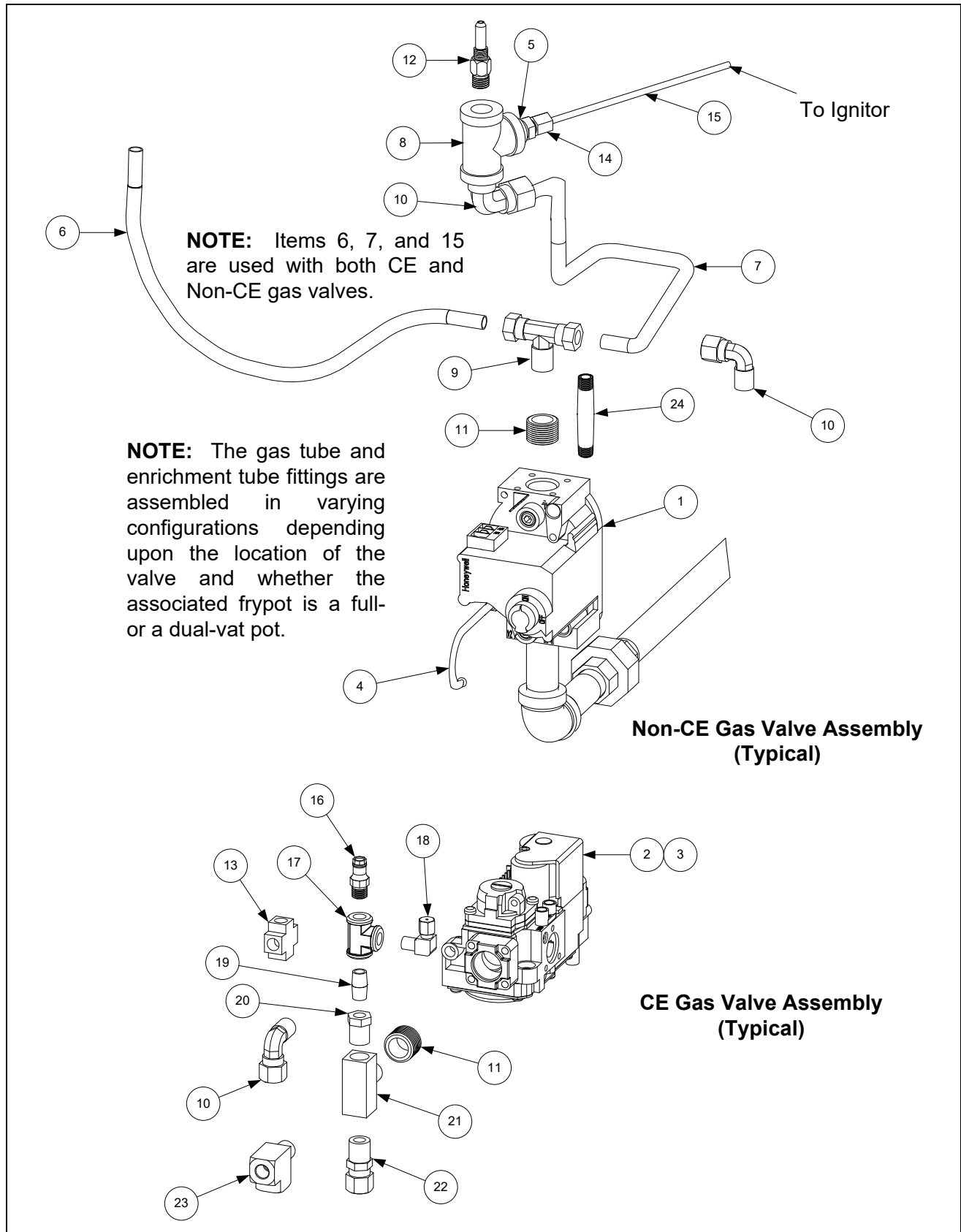
## 1.9 Gas Supply and Combustion System Components cont.

ITEM	PART #	COMPONENT
√ 1		Ignitor
	8263549	Natural Gas (G20, G25) (includes gasket 8160981, which may be ordered separately and enrichment tubes)
	8263552	Propane (G30, G31) (includes gasket 8160981, which may be ordered separately and enrichment tubes)
√ 2		Blower Assembly, Combustion Air (includes harness and Item 3)
	1062997SP	115V 50/60 Hz (Right)
	1062999SP	100V 50/60 Hz (Right)
	1083307SP	220V 60 Hz (Right)
	1062998SP	208-240V 50/60 Hz (Right) Non-CE International
	1088421SP	230V 50Hz CE FV Australia
	1088422SP	230V 50Hz (Right) CE DV Australia
	1063001SP	230V 50/60 Hz CE (Right) CE (Wide Body)
*	8161049	Gasket, Plenum/Blower (used between plenum and blower)
3	8160554	Cover, Blower Motor (component of all blowers listed above)
*	8068806SP	Harness Assembly, Blower Motor (component of all blowers listed above)
√ 4	1083346	Switch, Air Pressure Assembly FV (8122226 switch alone) CE and Export
√	1081455SP	Switch, Air Pressure Assembly DV (8122141 switch alone) CE and Export
√	1083542	Switch, Air Pressure Assembly FV (8122226 switch alone) Australia
√	1083541	Switch, Air Pressure Assembly DV (8122141 switch alone) Australia
		Gas Conversion Kits
*	8262965	Conversion Kit, Natural Gas FV (G20, G25) to Propane/Butane (G30, G31) Non-CE
*	8262966	Conversion Kit, Natural Gas DV (G20, G25) to Propane/Butane (G30, G31) Non-CE
*	8262967	Conversion Kit, Propane/Butane FV (G30, G31) to Natural Gas (G20, G25) Non-CE
*	8262968	Conversion Kit, Propane/Butane DV (G30, G31) to Natural Gas (G20, G25) Non-CE
*	8262969	Conversion Kit, Nat Gas FV (G20, G25) to Prop/Butane (G30, G31) Aust Non-CE
*	8262970	Conversion Kit, Nat Gas DV (G20, G25) to Prop/Butane (G30, G31) Aust Non-CE
*	8262971	Conversion Kit, Prop/But FV (G30, G31) to Natural Gas (G20, G25) Aust Non-CE
*	8262972	Conversion Kit, Prop/But DV (G30, G31) to Natural Gas (G20, G25) Aust Non-CE
*	8262975	Conversion Kit, Nat Gas (G20, G25) to Prop/Butane (G30, G31) CE
*	8262976	Conversion Kit, Prop/Butane (G30, G31) to Natural Gas (G20, G25) CE

\* Not illustrated.

√ Recommended parts.

## 1.10 Gas Valves and Associated Components



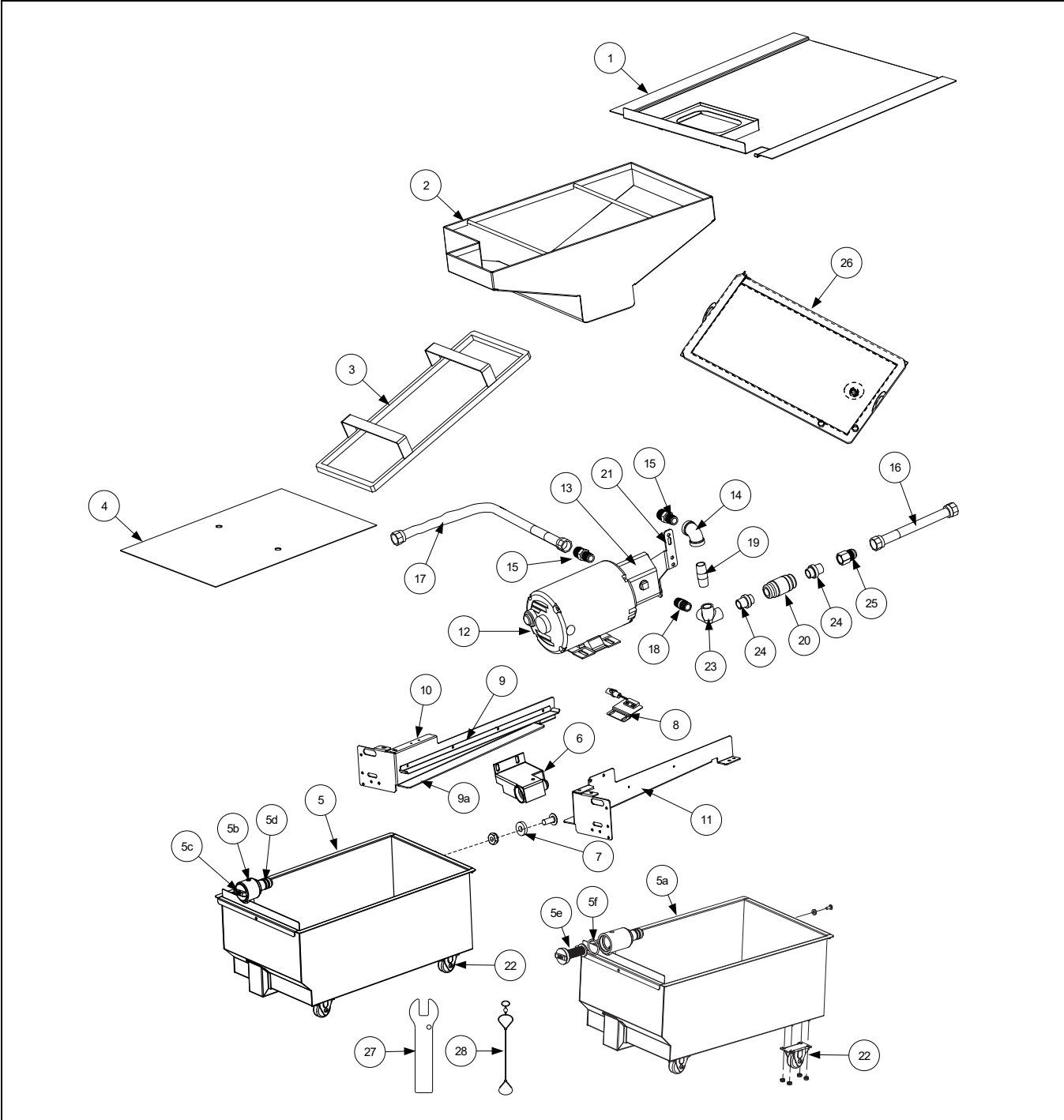
## 1.10 Gas Valves and Associated Components cont.

ITEM	PART #	COMPONENT
		<b>Gas Conversion Kits</b>
	<a href="#">8262969</a>	<b>Natural to Propane (LP) Full Vat</b>
	<a href="#">8262970</a>	<b>Natural to Propane (LP) Dual Vat</b>
	<a href="#">8262971</a>	<b>Propane (LP) to Natural Full Vat</b>
	<a href="#">8262972</a>	<b>Propane (LP) to Natural Dual Vat</b>
√ 1		Valve, Non-CE Gas
	<a href="#">8261122</a>	Natural Gas (G20, G25) 3.2WC
	<a href="#">8261123</a>	Propane Gas (G30, G31)
	<a href="#">8263296</a>	Kit Natural Gas Full Vat w/ flexlines and hardware
	<a href="#">8263297</a>	Kit Natural Gas Dual Vat w/ flexlines and hardware
	<a href="#">8263298</a>	Kit, Propane Gas Full Vat w/ flexlines and hardware
	<a href="#">8263299</a>	Kit, Propane Gas Dual Vat w/ flexlines and hardware
√ 2	<a href="#">8101715</a>	Valve, CE Gas (G20, G25, G30, G31)
3	<a href="#">8101041</a>	Accessory Kit (contains parts to adapt Item 2 to specific fryer configuration)
4	<a href="#">8100691</a>	Tube, 1/8" Vent
5	<a href="#">8103147</a>	Bushing, 3/4" OD x 1/2" ID NPT Flush
6	<a href="#">8261532</a>	Kit, 15" Gas Line Valve to Orifice
7	<a href="#">8261531</a>	Kit, 12" Gas Line Valve to Orifice (use <a href="#">8101353</a> for 9" for some DV pots)
8	<a href="#">8130449</a>	Tee, 1/4" NPT Brass
9	<a href="#">8130301</a>	Tee, 1/4" Male NPT to 3/8" Tube
10	<a href="#">8130302</a>	Elbow, 1/4" Male NPT to 3/8" Tube 90° (used on DV valve)
11	<a href="#">8130304</a>	Bushing, 1/2" NPT to 1/4" NPT Flush Reducing
12		Orifice, Burner
	<a href="#">8103977</a>	1.88mm 75% Butane/25% Butane (Standard Elevation)
	<a href="#">8103865</a>	1.95mm Propane/Butane (G30, G31)
	<a href="#">8103860</a>	2.05 mm Propane/Butane (G30, G31) (0-4999 Ft, 0-1524 M)
	<a href="#">8103863</a>	2.10 mm Propane/Butane (G30, G31) (5000-6999 Ft, 1525-2133 M)
	<a href="#">8103867</a>	2.84mm Natural Gas (G20, G25) Australia Only DV
	<a href="#">8103866</a>	2.92mm Natural Gas (G20, G25) Australia Only FV
	<a href="#">8103864</a>	3.18 mm Natural Gas (G20, G25) (0-4999 Ft, 0-1524 M) CE
	<a href="#">8103861</a>	3.26 mm Natural Gas (G20, G25) (0-4999 Ft, 0-1524 M)
	<a href="#">8103862</a>	3.40 mm Natural Gas (G20, G25) (5000-6999 Ft, 1525-2133 M)
13	<a href="#">8130378</a>	Fitting, 1/8" NPT Cross
14	<a href="#">8130340</a>	Adapter, 1/8" NPT to 1/8" Tube
15	<a href="#">8104238</a>	Tube, 1/8" OD X 5.40" Enrichment FV
	<a href="#">8104239</a>	Tube, 1/8" OD X 4.80" Enrichment DV
16	<a href="#">8101176</a>	Tap, 1/8" NPT Pressure
17	<a href="#">8130377</a>	Tee, 1/8" NPT Female
18	<a href="#">8130354</a>	Elbow, 1/8" NPT X 1/8" Tube Compression
19	<a href="#">8130016</a>	Nipple, 1/8" NPT X Close
20	<a href="#">8101006</a>	Bushing, 1/4" NPT to 1/8" NPT Reducing
21	<a href="#">8130495</a>	Tee, 1/4" Male NPT to Female NPT
22	<a href="#">8101025</a>	Connector, 1/4" Male NPT to 3/8" Tube
23	<a href="#">8101026</a>	Tee, 1/4" Male NPT to Female NPT Street
24	<a href="#">8130700</a>	Nipple, 1/4" NPT x 3"

√ Recommended parts.

Pump plumbing may differ somewhat from illustration depending on configuration and date of manufacture.

### 1.11 Filtration System Components

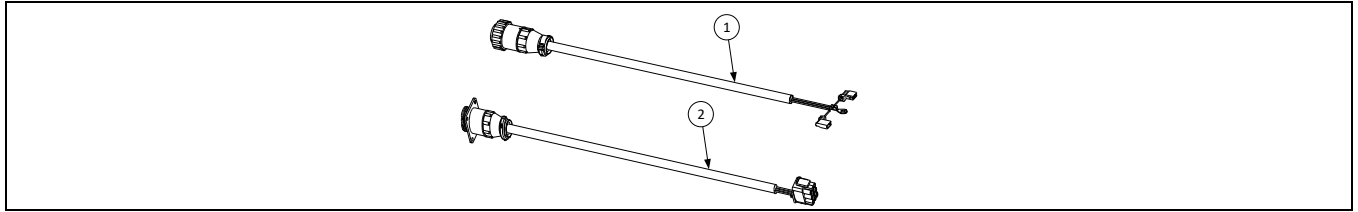


ITEM	PART #	COMPONENT
1	8238786	Lid, Filter Pan
2	8238626	Crumb Tray
3	8103289	Hold-Down Ring 10.95" x 19.10"
4	8122025	Sana Grid Filter Screen
5	1087700SP	Pan, Filter Assembly with casters ( <i>prior to 11/2022</i> )
	1088399SP	Pan, Filter Assembly with casters ( <i>Solid Shortening</i> ) ( <i>prior to 11/2022</i> )
5a	130000514SP	Pan, Assy, Filter Half Size ( <i>2-Vat Fryer</i> ) with casters ( <i>after 10/2022</i> )
	130000519SP	Pan, Assy, Filter Half Size ( <i>2-Vat Fryer</i> ) with casters ( <i>Solid Shortening</i> ) ( <i>after 10/2022</i> )

ITEM	PART #	COMPONENT
	TBD	Pan, Filter Pan with casters ( <b>Only for use with Filter Leaf</b> )
5b	8130989	Plug, 1/8" Socket Head Pipe (used with Item 5)
5c	8238335	Screen, Suction Line Filter
√ 5d	8263288	O-Ring (Pkg. of 6; used with Item 5)
5e	8239651	Screen, Suction Line Filter ( <b>Long</b>
5f	8161213	O-Ring, Inline Filter Cap ( <b>for use with 8239651</b> )
6	8239429	Suction Tube ( <b>Short</b> )
7	8103007	Magnet, Pull Ring
8	1085626	Assembly, Filter Pan Switch
√ *	1065876SP	Sensor, Magnet
9	2308372	Rail, Upper
9a	2308373	Rail, Lower
10	8238030	Support, Left Filter Pan
11	2208368	Support, Right Filter Pan (use <a href="#">1082872</a> for 2-Battery)
√ 12		Motor and Gasket Kit
	8261785	100V 50/60 Hz
	8261712	115V 50/60 Hz
	8261756	208V 50/60 Hz
	8261270	220-240V 50/60 Hz
	8261755	250V 50/60 Hz
√ 13	8263191	Pump and Gasket Kit, 4 GPM
	8160093	Gasket, Pump/Motor
*	8091062	Cap Screw, 5/16"-18 4.00" NC Hex ( <i>Connects pump to motor</i> ) (use <a href="#">8090194</a> washer)
14	8130062	Elbow, 1/2" 90° BM
15	8101668	Adapter, 5/8" to 1/2" NPT Male
16	8101067	Flexline, 5/8" OD x 8.50" long Oil Return
17	8101057	Flexline, 5/8" OD x 13.00"
	8101055	Flexline, 5/8" OD x 11.50"
	8101369	Flexline, 5/8" OD x 17.50"
	8101069	Flexline, 5/8" OD x 29.50"
18	8130087	Nipple, 1/2" x 1.50" NPT BM
19	8130298	Nipple, 1/2" x 2.00" NPT BM
20	8104878	Check Valve 1/2" NPT 1 PSI
21	2206191	Brace, Pump Motor
22	8104137	Caster, 2.00"
23	8130331	Elbow, 1/2" NPT with Side Outlet BM (Non-Bulk - use item #14 in this location)
24	8103738	Adapter, Check Valve Close
25	8101669	Adapter, Female 5/8" OD x 1/2"
26	TBD	Leaf Assy, Filter ( <b>Only for use with Filter Pan TBD</b> )
27	2401086	Wrench, Pre-Filter Cap
28	8104167	Lanyard, Filter Screen Wrench
*	8071105	Heater Strip Assembly, 100-120V 25W 18"
*	8071098	Heater Strip Assembly, 208-250V 25W 18"

\* Not illustrated. √ Recommended parts.

### 1.11.1 Filter Motor Harnesses **(after 05/2019)**

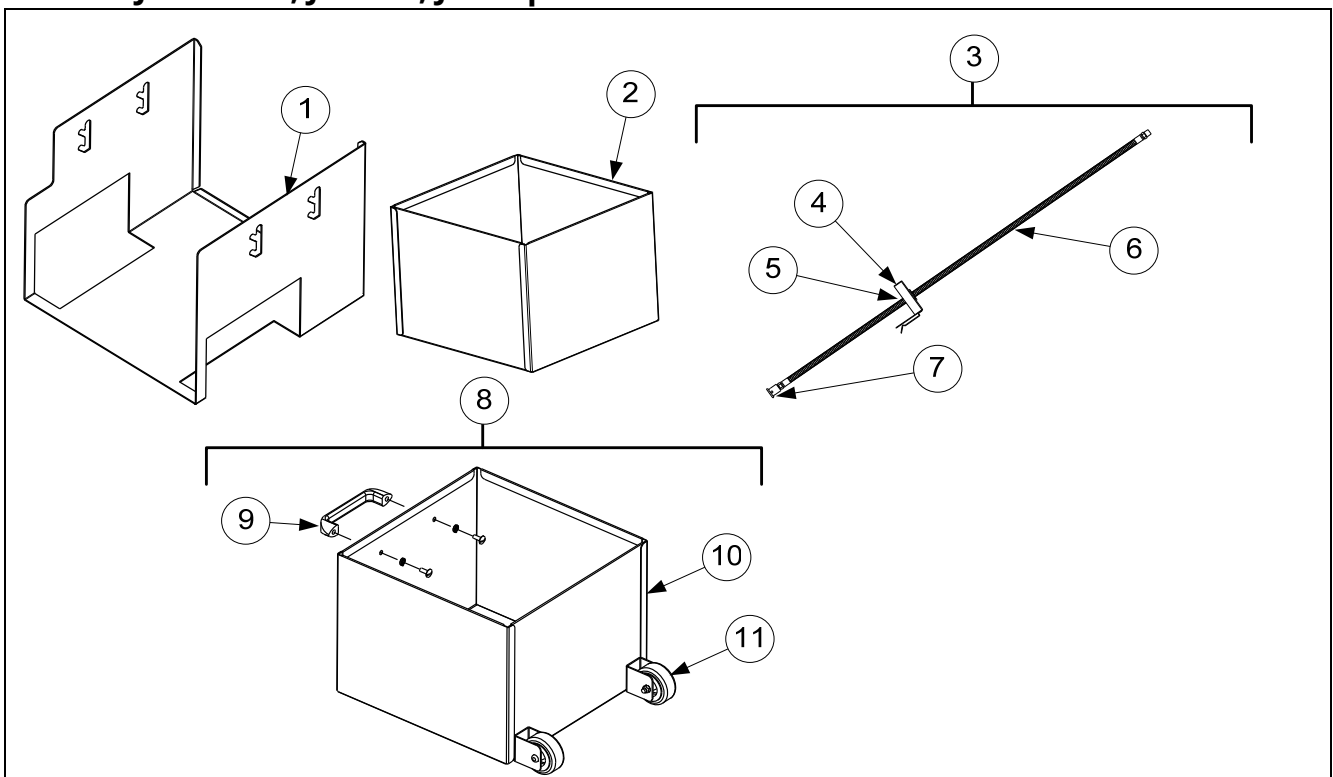


ITEM	PART #	COMPONENT
1	8076406	Harness, Filter Motor Female
2	8076407	Harness, Filter Motor Male

\* Not illustrated. ✓ Recommended parts

## 1.12 ATO (Auto Top-Off) Components

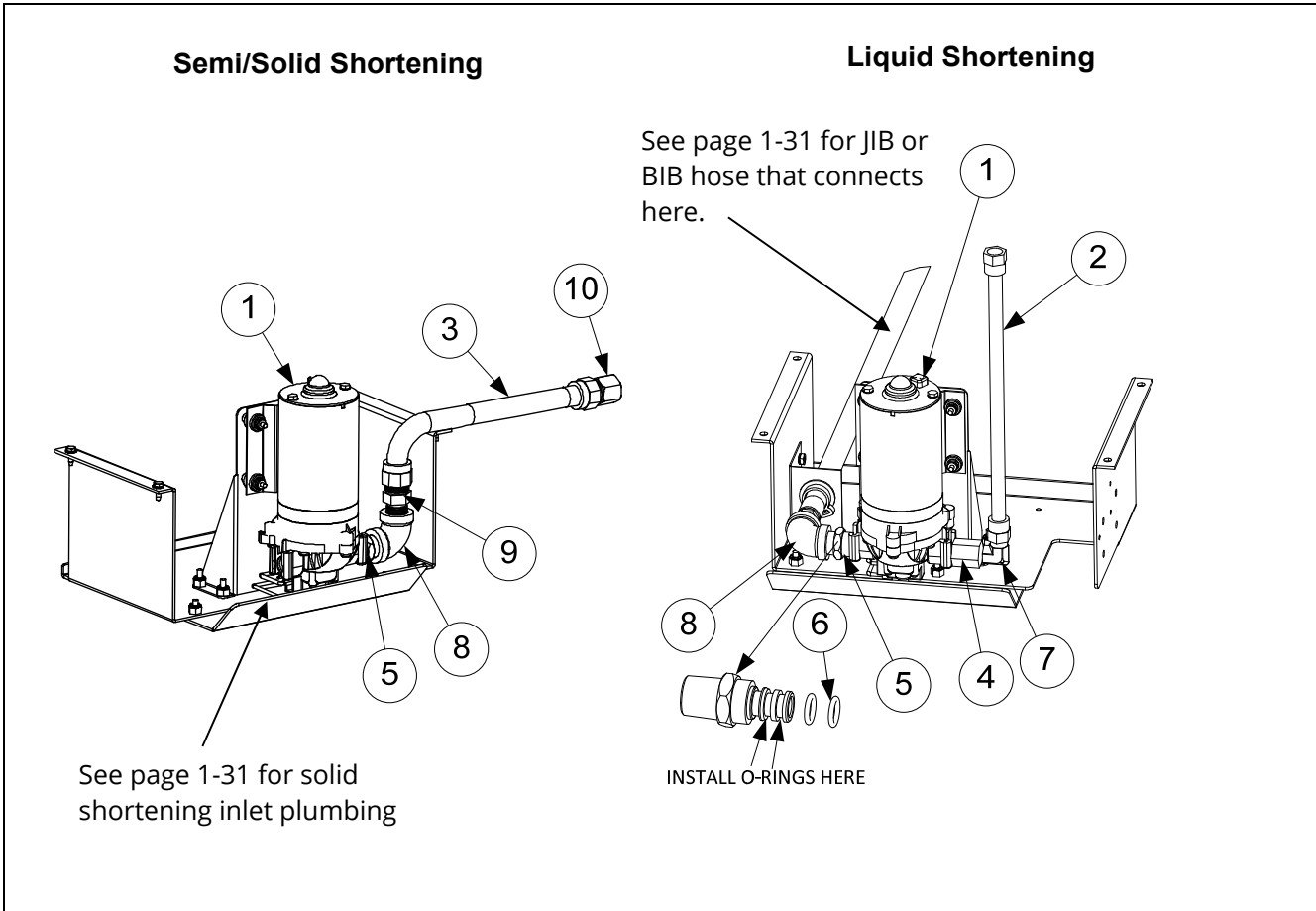
### 1.12.1 JIB Cradle, JIB Box, JIB Cap Assemblies



ITEM	PART #	COMPONENT
1	2600197	Cradle, JIB Gas
*	8090402	Screw, Thumb ¼-20 x ½"
2	8242298	Box, JIB
3	1082005P	Cap, JIB Assembly (use 1082047 for Intl BIB)
4	1082001	Cap, JIB (use 1082002 for Intl. BIB)
5	8160870	Clamp
6	8103823	Hose, JIB
7	8237738	Tip Assembly, JIB Suction Hose
8	1086895	Box Assembly, JIB w/ Handle and Casters
9	8100180	Handle
10	8239145	Box, W/A JIB w/ handle
11	8122337	Caster, 2"

\* Not illustrated. ✓ Recommended parts.

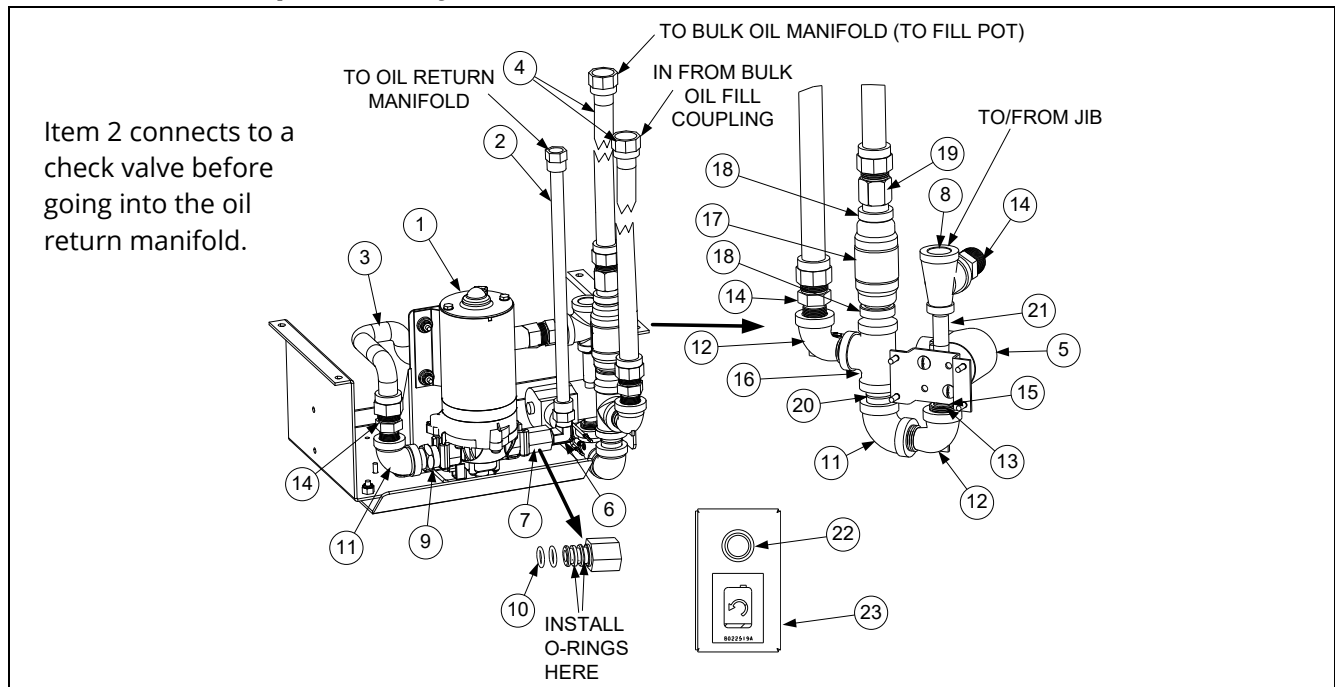
## 1.12.2 ATO Pump Assembly Non-Bulk



ITEM	PART #	COMPONENT
	1087705	Pump, Assy FQG230 ATO, (use 1087706 for FQG330 or larger ATO)
√ 1	1084372	Pump, Shurflo 24VAC (use 1085673 for CE)
2	8103263	Flexline, 3/8" OD x 36" (use 8103375 17" for 2-battery) (Out to top off manifold)
3	8101369	Flexline, 5/8" OD x 17.50" (use 8101069 29.50" for 2-battery)
4	1083403	Fitting, Shurflo Pump with female end (includes O-rings)
5	1082054	Fitting, Shurflo Pump with male end (includes O-rings)
6	8160782	O-Ring, Viton #111
7	8130940	Elbow, 1/4" NPT x 3/8" Flare
8	8130062	Elbow, 1/2" 90° BM
9	8101668	Adapter, 5/8" to 1/2" NPT Male
10	8101669	Adapter, Female 5/8" OD x 1/2"

√ Recommended parts.

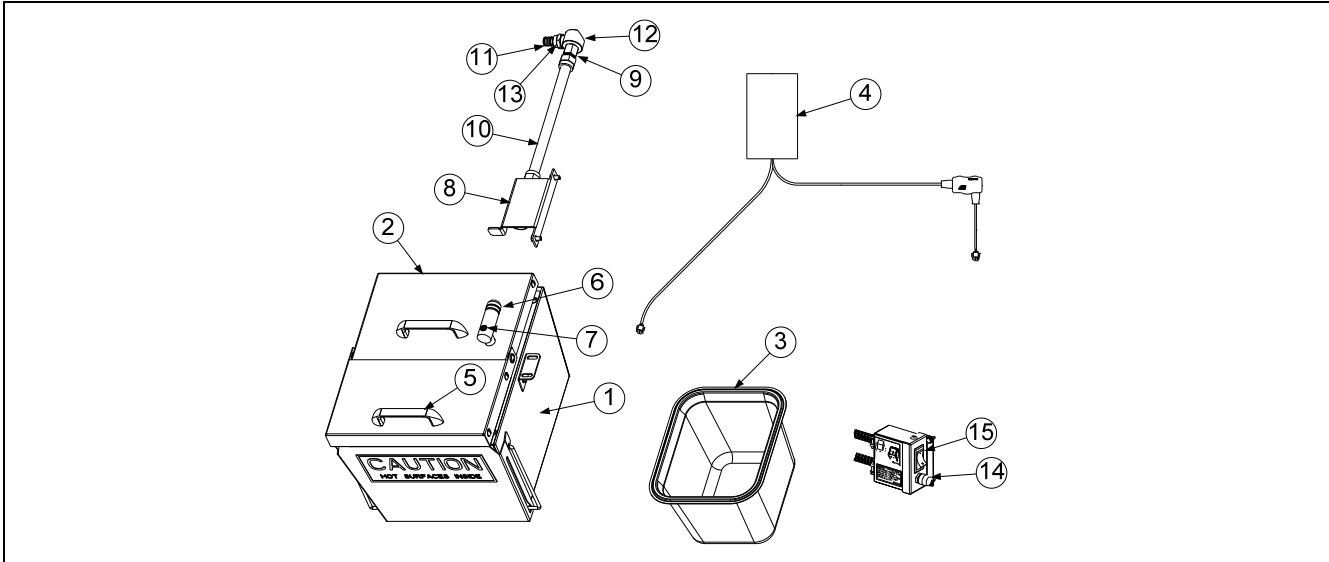
### 1.12.3 ATO Pump Assembly Bulk



ITEM	PART #	COMPONENT
	1087704	Pump, Assy FQG230 Bulk ATO (use 1087702 for FQ330 bulk oil ATO)
√ 1	1084372	Pump, Shurflo 24VAC (use 1085673 for CE)
2	8103263	Flexline, 3/8" OD x 36" (Out to oil check valve and to return manifold) 3, 4 and 5 vats.
	8103375	Flexline, 3/8" OD x 17" (Out to oil check valve and to return manifold) 2 vat
*	8100667	Check valve, 1/2" NPT 1 PSI
3	8101055	Flexline, 5/8" OD x 11.50" (Inlet to Top Off Pump)
4	8101369	Flexline, 5/8" OD x 17.50"
5	1066830	Solenoid
6	8130940	Elbow, 1/4" NPT x 3/8" Flare
7	1083403	Fitting, Shurflo Pump with female end (includes O-rings)
8	8130530	Tee, Reducing 1/2" x 1/4" x 1/2" (JIB hose connects here)
9	1082054	Fitting, Shurflo Pump with male end (includes O-rings)
10	8160782	O-Ring, Viton #111
11	8130062	Elbow, 1/2" 90° BM
12	8130165	Elbow, Street 1/2" x 1/2" NPT 90° BM
13	8130304	Bushing, BM Flush
14	8101668	Adaptor, Male 5/8" OD x 1/2"
15	8130838	Nipple, 1/4" NPT BM Close
16	8130003	Tee, 1/2" x 1/2" x 1/2" BM
17	8103583	Check Valve 1/2" NPT 4 PSI
18	8103738	Adapter, Check Valve Close NPT
19	8101669	Adapter, Female 7/8" OD x 1/2"
20	8130022	Nipple, 1/2" x Close NPT BM
21	8130537	Nipple, 1/4" x 2.00" NPT
22	1069206	Assembly, JIB Reset Button Bracket
23	8074678	Switch, Momentary JIB Reset

\* Not illustrated. √ Recommended parts.

## 1.12.4 Shortening Melting Unit

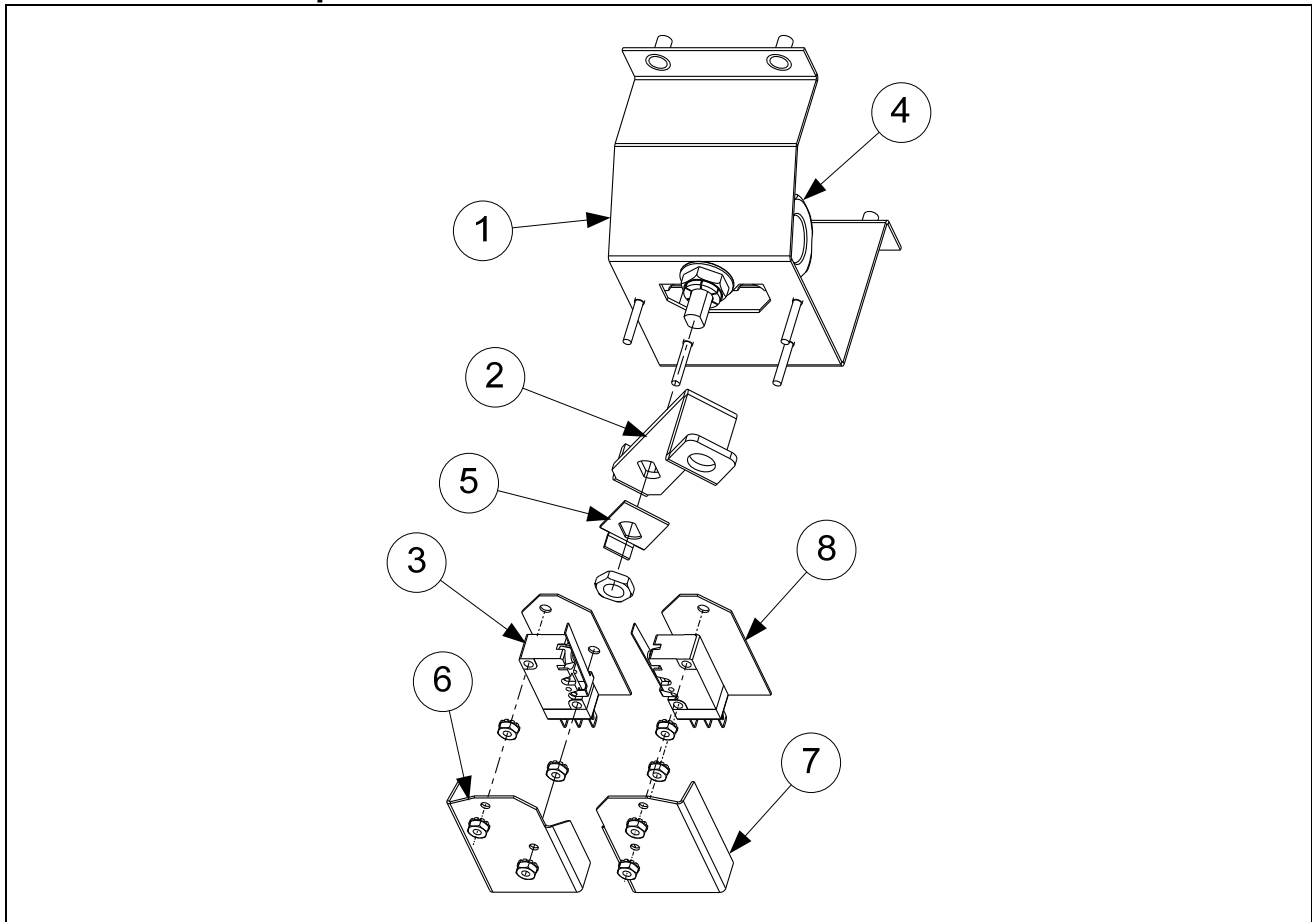


ITEM	PART #	COMPONENT
	1084497SP	Assy, Heated Shortening 120V (use 1084493 240V) (use 1085585 100V)
1	1084496	Box Assy, Heated Shortening 120V (use 1084492 240V) (use 1085584 100V)
2	1083774	Assembly, Solid Shortening Lid
3	8103957	Pan, Heated Shortening
4	8075321	Strips, Hot Box Heater with controller 120V
	8075268	Strips, Hot Box Heater with controller 240V
	8075732	Strips, Hot Box Heater with controller 100V
5	8100180	Handle
√ 6	8261392	O-Ring (Pkg. of 5)
7	8130568	Plug, 1/8" Socket Head Pipe
8	8238319	Bracket W/A, Shortening Suction 3 battery
9	8101669	Adaptor, Female 7/8" OD x 1/2"
10	8101055	Flexline, 5/8" OD x 11.5"
11	8160782	O-Ring, Viton #111
12	8130908	Adapter, 1/2" NPT 90°
13	1082054	Fitting, Shurflo Pump with male end (includes O-rings)
14	8071321	Holder, Fuse
√ *	8071555	Fuse 5 Amp 240V
√ *	8072799	Fuse 10 Amp 120V
15	8074036	Switch
*	8071105	Heater Strip Assembly, 120V, 25W 18"
*	8071420	Heater Strip Assembly, 120V, 25W 36"
*	8071472	Heater Strip Assembly, 120V, 40W 56"
*	8071098	Heater Strip Assembly, 240V, 25W 18"
*	8071419	Heater Strip Assembly, 240V, 45W 36"
*	8071473	Heater Strip Assembly, 240V, 70W 56"
*	8071915	Heater Strip Assembly, 100V, 25W 18"
*	8071917	Heater Strip Assembly, 100V, 40W 56"

\* Not illustrated. √ Recommended parts.

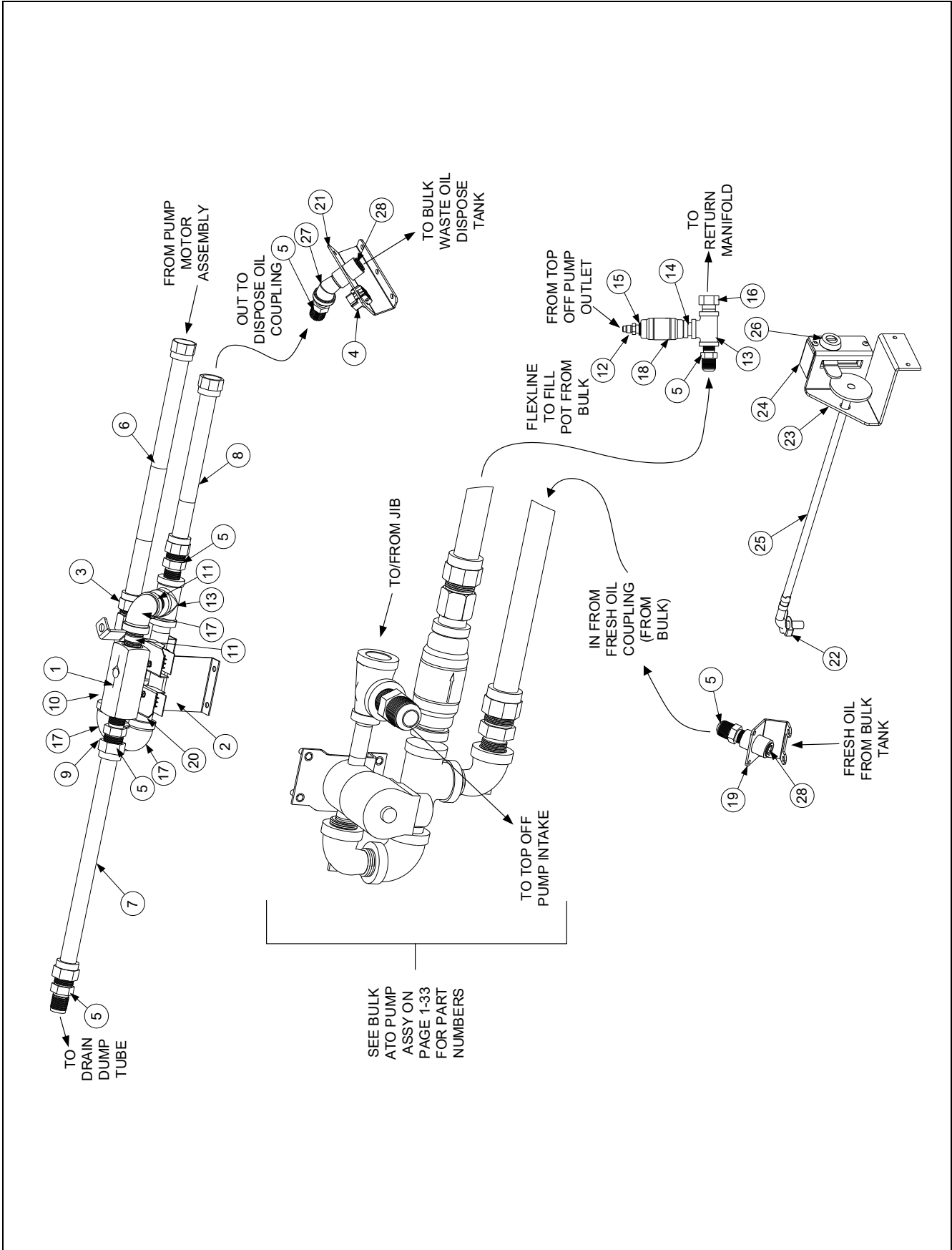
## 1.13 Bulk Oil System Components

### 1.13.1 Bulk Oil Dispose Waste Valve



ITEM	PART #	COMPONENT
	1086009	Valve, Bulk Dispose Waste FQ
1	1086008	Bracket, FQ Bulk Waste Valve (prior to 10/2018)
	1085922	Bracket, FQ Bulk Waste Valve (after to 09/2018)
2	2205899	Handle, Bulk Waste Valve (prior to 10/2018)
	2401834	Handle, RTI Waste Valve (after to 09/2018)
3	8074936	Microswitch, Gold Sealed
4	8100278	Valve, ½" Ball
5	9002935	Retainer, Nut Return Valve
6	9012348	Cover, DV Safety Switch
7	9022348	Cover, DV Safety Switch
8	8160220	Insulation, RF Switch

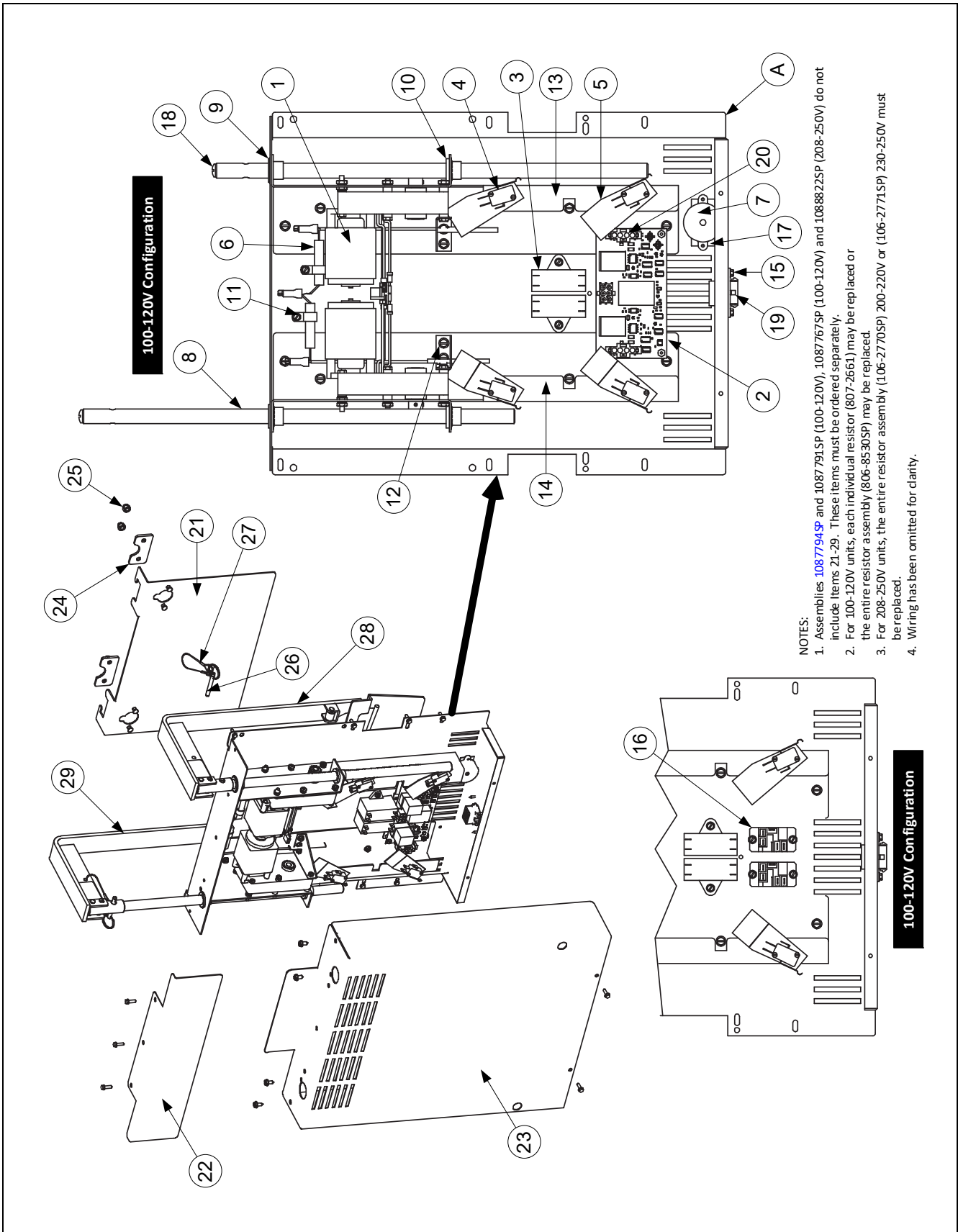
### 1.13.2 Bulk Oil Manifold and Accessories



### 1.13.2 Bulk Oil Manifold and Accessories cont.

ITEM	PART #	COMPONENT
1	8103531	Valve, Check 20PSI
2	1086009	Valve, Bulk Waste Assembly (see page 1-35 for parts)
3	8101669	Adaptor, Female 5/8" OD x 1/2"
4	8076105	Harness, Dispose/Pan SW/Bulk
*	1085398SP	Bulk Oil Harness Pigtail
5	8101668	Adaptor, Male 5/8" OD x 1/2"
6	8101057	Flexline, 5/8" OD x 13" long
7	8101055	Flexline, 5/8" OD x 11.50" long
8	8101067	Flexline, 5/8" OD x 8.50" long
9	8130022	Nipple, 1/2" x Close NPT BM
10	8130251	Nipple, 1/2" x 4.50" NPT BM (not shown in illustration – connects between item 17 and item 3)
11	8130087	Nipple, 1/2" x 1.50" NPT BM
12	8103270	Fitting, 3/8" Flare x 1/4" NPT
13	8130003	Tee, 1/2" x 1/2" x 1/2" BM
14	8103738	Adaptor, Check Valve Close Nipple
15	8130304	Bushing, 1/2" x 1/4"
16	8103160	Adaptor, 1/2" NPT x 15/16"
17	8130062	Elbow, 1/2" BM 90°
18	8100667	Valve, Check 1/2" NPT 1 PSI Bulk Manifold
19	8237838	Bracket W/A, Gas Bulk Fresh Oil
20	8130298	Nipple, 1/2" x 2" NPT BM
21	8238827	Bracket W/A, FQ Gas Bulk Dispose
	1080686SP	Handle and Lock Assy, Gas Bulk
22	8090657	Clip, Clevis Right Rod End
23	2205656	Brace, Bulk Handle
24	2205657	Cover, Bulk Handle
25	8237208	Handle, Gas Bulk Waste Pull
26	8103587	Lock, Bulk Waste Handle (includes keys)
27	8130342	Elbow, Street 45° 1/2" NPT
28	8130463	Plug, 1/2" NPT

# 1.14 Basket Lift Assembly and Associated Parts

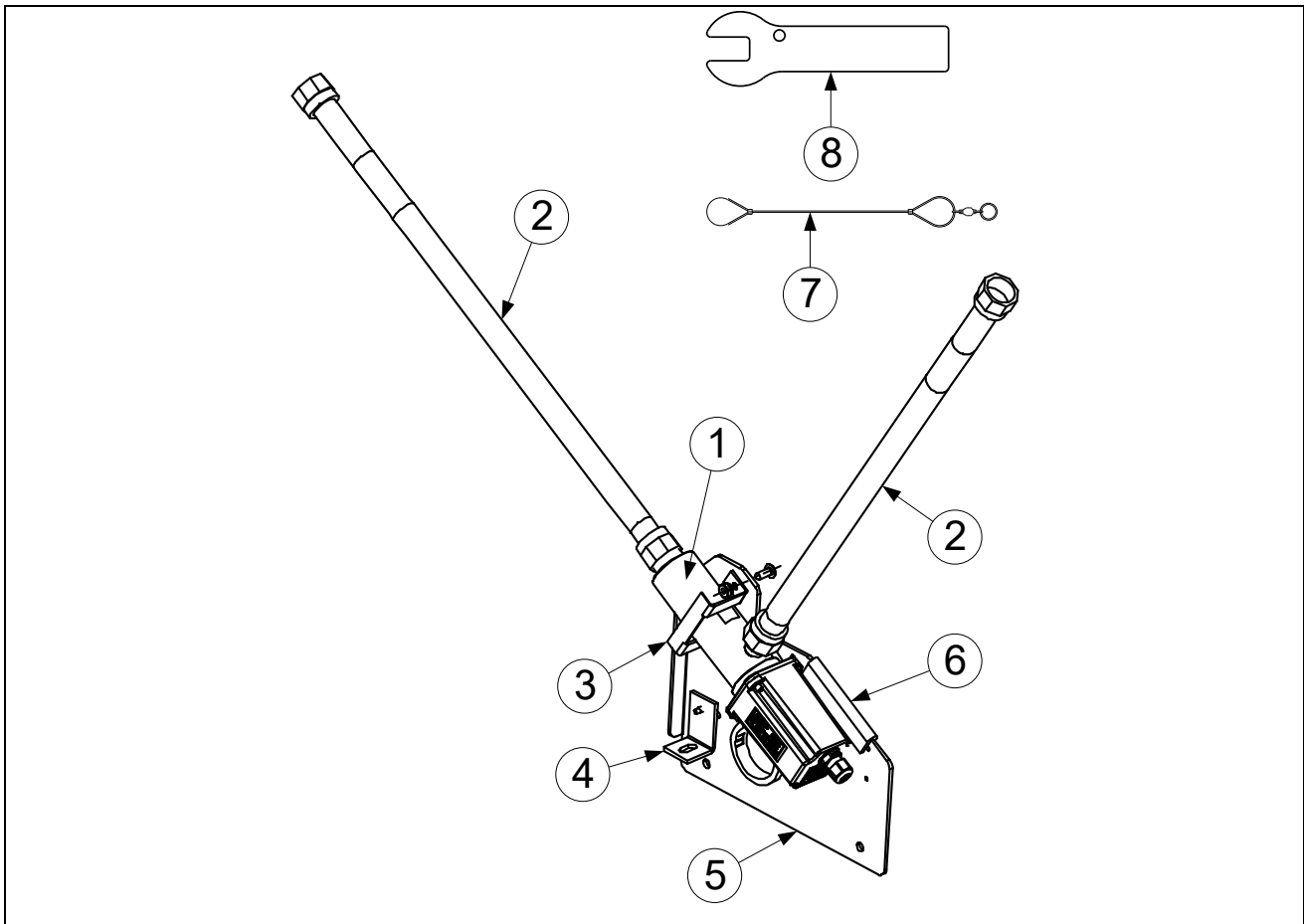


- NOTES:**
1. Assemblies 1087791SP (100-120V), 1087767SP (100-120V) and 1088822SP (208-250V) do not include items 21-29. These items must be ordered separately.
  2. For 100-120V units, each individual resistor (807-2661) may be replaced or the entire resistor assembly (806-8530SP) may be replaced.
  3. For 208-250V units, the entire resistor assembly (106-2770SP) 200-220V or (106-2771SP) 230-250V must be replaced.
  4. Wiring has been omitted for clarity.

## 1.14 Basket Lift Assy and Associated Parts cont.

ITEM	PART #	COMPONENT
		<b>Basket Lift Assemblies</b> (see <b>Note 1</b> in illustration)
A	1087794SP	Basket Lift Assy, 100-120VAC Reversing (Items 1-20) shown <b>Use 8263479 for kit that includes items 1-29.</b>
B	1088010SP	Basket Lift Assy, 100-120VAC Non-Reversing (Items 1-20) partially shown – Arby's/General Market
C	1088822SP	Basket Lift Assy, 208-250VAC Non-Reversing (Items 1-20) not shown – General Market
1	1084181SP	Motor Assy, 100-120VAC Modular Basket Lift
	1085031SP	Motor Assy, 208-250VAC Modular Basket Lift
2	4060070	PCB Assy, Basket Lift Reversing (only in 1087794SP assembly)
*	8070834	Relay, BL 15A 12V
3	8072513	Capacitor, 12.5 µFd 330VAC
4	8072572	Microswitch
5	8120442	Insulation, Microswitch
6		Resistor Assy
	8068530SP	100-120V Modular Basket Lift (see <b>Note 2</b> in illustration)
	1062770SP	208-220VAC Modular Basket Lift
*	1062771SP	230-250VAC Modular Basket Lift
7	8103141	Sound Device
8	8104855	Rod, Modular BL w/Pin TB (use 8101012 for non-reversing)
9	8130035	Bushing, Bronze
10	8090082	Ring, Bushing Retainer
11	8090810	Clamp, Nylon
12	2209678	Gusset, Basket Lift Motor
13	2410330	Chassis, Left Basket Lift (use 2411379 for non-reversing)
14	2420330	Chassis, Right Basket Lift (use 2421379 for non-reversing)
15	2201415	Plate, Basket Lift Harness
16	8071683	Relay, 12VDC
17	8160862	Tape, 3M VHB 1.00 X 2.00
18	8090129	Screw, 1/4-20 X 5/8 Slotted Round Head
19	1087776	Harness, Reversing Modular BL
20	1087775	Harness, Reverse BL 4-Pin Connector
*	WIR1197	Wire Assy, Basket Lift Reverse 100-120VAC
*	WIR0166	Wire Assy, Basket Lift Reverse 200-250VAC (used in non-reverse also)
21	1087768	Guide, B/L Arm Taco Bell
	1087767	Guide, B/L Arm non-Taco Bell
22	2401693	Shield, Rear Modular B/L Cover
23	2401694	Cover, FQ4000 Modular B/L (use 2601846 non-reversing)
24	2601474	Cover, Basket Hanger Rivet B/L
25	8090047	Nut, Cap ¼" -20
26	8104852	Pin, ¼" X 1-5/16" Quick Release
27	8104854	Lanyard, w/Ring
28	8239432	Arm, Left Taco Bell (use 8239445-General Market) (use 8239462-Arby's)
29	8239433	Arm, Right Taco Bell (use 8239446- General Market) (use 8239497-Arby's)

## 1.15 Oil Quality Sensor (OQS) and Associated Parts



ITEM	PART #	COMPONENT
	8263494	Kit, OQS FilterQuick Gas 2-5 Battery (Kit to add to existing FilterQuick-T FQG30-T Gas Fryers)
1	<a href="#">8263292</a>	Sensor, FilterQuick OQS Replacement
2	<a href="#">8101369</a>	Flexline, 5/8" OD x 17.50"
*	<a href="#">8101057</a>	Flexline, 5/8" OD x 13.00"
*	<a href="#">8101400</a>	Flexline, 5/8" OD x 21.00"
3	<a href="#">2401385</a>	Retainer, OQS Sensor ( <b>prior to 06/2019</b> )
	<a href="#">2401910</a>	Retainer, OQS Sensor ( <b>after 05/2019</b> )
4	<a href="#">2401386</a>	Brace, OQS Sensor Mount
5	<a href="#">2401438</a>	Mount, OQS Sensor ( <b>prior to 06/2019</b> )
*	<a href="#">1088338</a>	Mount, OQS Sensor ( <b>after 05/2019</b> )
6	<a href="#">8122524</a>	Insulation
7	<a href="#">8104167</a>	Lanyard, In-Line Filter
8	<a href="#">2401086</a>	Wrench, Pre-Filter Cap

# 1.16 FilterQuick™ FQ30-T Series Simplified Wiring

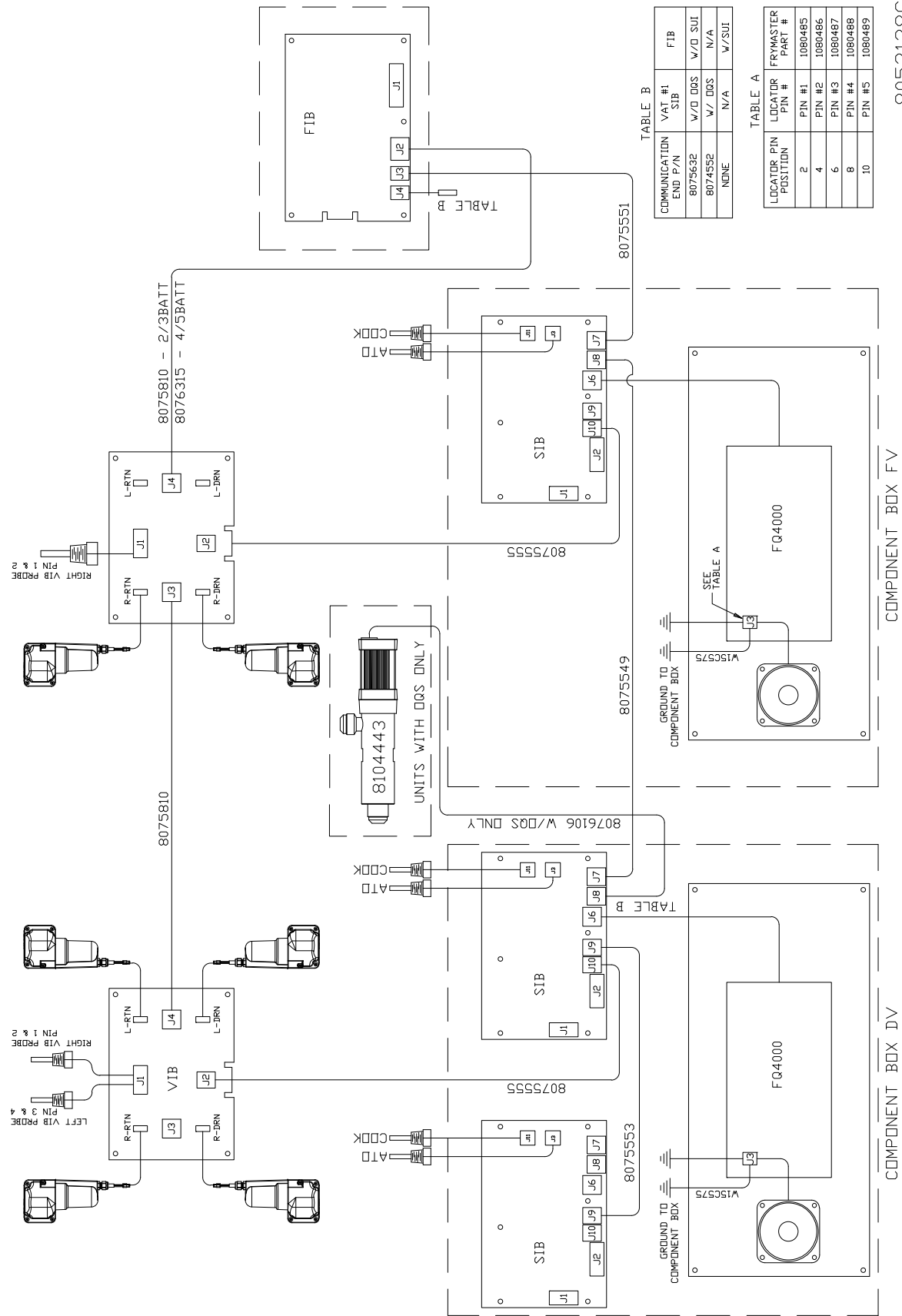


TABLE B

COMMUNICATION END P/N	VAT #1 SIB	FIB
8075632	W/D DOS	W/D SUI
8074552	W/ DOS	N/A
NONE	N/A	W/SUI

TABLE A

LOCATOR PIN POSITION	LOCATOR PIN #	FRYMASTER PART #
2	PIN #1	1060485
4	PIN #2	1060486
6	PIN #3	1060487
8	PIN #4	1060488
10	PIN #5	1060489

8052138C

**THIS PAGE INTENTIONALLY LEFT BLANK**

# *Frymaster*<sup>®</sup>

FRYMASTER  
8700 LINE AVENUE, SHREVEPORT, LA 71106-6800

800-551-8633  
318-865-1711  
[WWW.FRYMASTER.COM](http://WWW.FRYMASTER.COM)  
EMAIL: [FRYSERVICE@WELBILT.COM](mailto:FRYSERVICE@WELBILT.COM)



Welbilt offers fully-integrated kitchen systems. Welbilt's portfolio of award-winning brands includes Cleveland™, Convotherm®, Crystal Tips®, Dean®, Delfield®, Fabristeel®, Frymaster®, Garland®, Inducs®, Koldtech®, Kolpak®, Lincoln®, McCann's™, Merco®, Merrychef®, Multiplex®, RDI®, SerVend™, SunFire®, U.S. Range™, and WMaxx™. Supported by service brands: FitKitchen®, kitchen systems; and KitchenConnect®, cloud-based open platform.

*Bringing innovation to the table* • [welbilt.com](http://welbilt.com)

©2024 Frymaster LLC. except where explicitly stated otherwise. All rights reserved. Continuing product improvement may necessitate change of specifications without notice.

Part Number FRY\_P\_8197478 05/2024