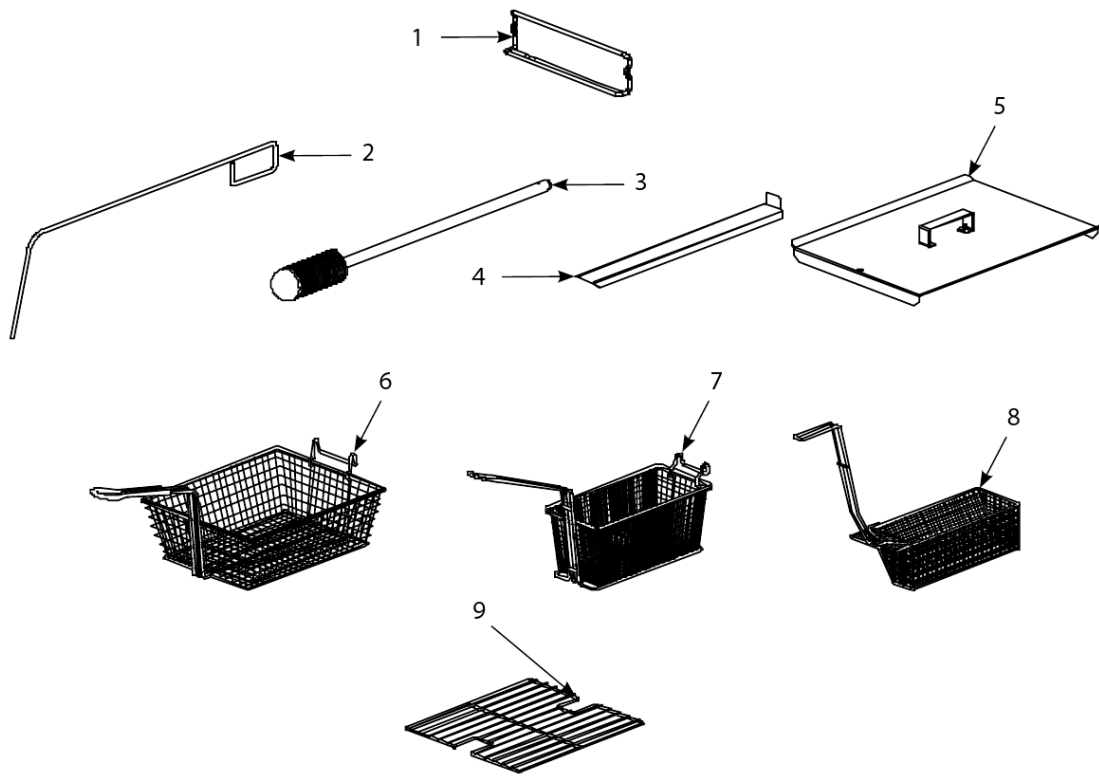


Protector® Series Electric Fryers

Accessories



Protector® Series Electric Fryers

Accessories

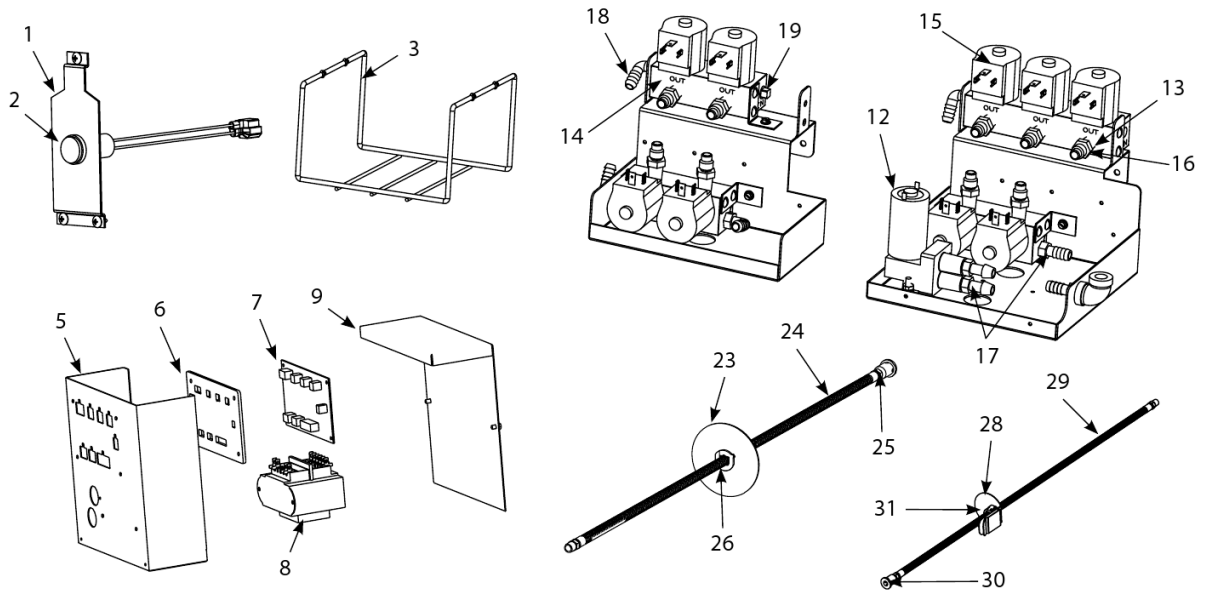
#	PART #	DESCRIPTION	QTY	Note
1	8102793	Hanger - Wireform Basket	1	
1a	8090921-FRY	Spacer, Basket Hanger	1	
2	8030197	Fryer's Friend	1	
3	8030209	Brush, Frypot	1	
4	8235956	Connecting Strip, Frypot	1	
4a	8236755	Connecting Strip, Spreader LH Side	1	
4b	8236756	Connecting Strip, Spreader RH Side	1	
5	1068325	Cover, Full-Vat Frypot	1	
6	8030099	Basket, Full Size	1	
7	8030271	Basket, Twin Size	1	[1]
8	8030113	Sediment Tray, Full-vat	1	
9	8030132	Rack, Full-Vat Basket Support	1	
10	8241664	Spreader Pan	1	
11	8241720	Cover, Spreader Pan	1	
12	8071575	Heatlamp, Merco 120V 2 Bulb	1	
12a	8065278SP	Heatlamp, Merco 120V	1	[2]
13	8071576	Heatlamp, Merco 240V 2 Bulb	1	
13a	8065285SP	Heatlamp, Merco 240V	1	[2]
14	8030002	Powder, Filter	1	[3]
15	8030170	Filter Paper, 16.5" x 25.75"	1	

PART NOTES:

- [1] - Twin
- [2] - for Lamp Assembly
- [3] - 80- 1-Cup Applications

Protector® Series Electric Fryers

Auto Top Off and JIB Components



Protector® Series Electric Fryers

Auto Top Off and JIB Components

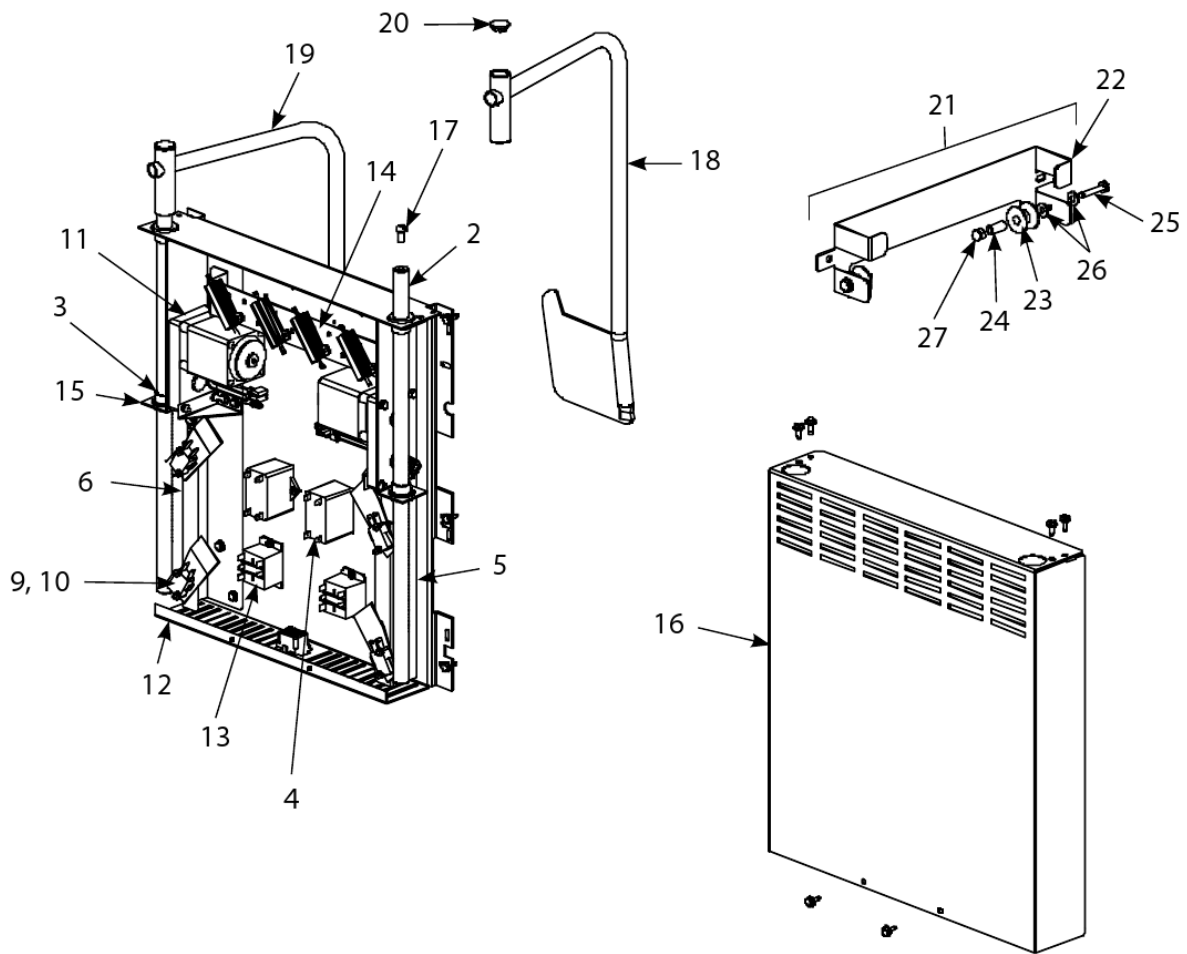
#	PART #	DESCRIPTION	QTY	Note
1	2304142	Bracket, Protector® Light	1	
2	1068105SP	Light, Yellow 24VDC LED Flush	1	
3	2208363	Cradle, JIB	1	
4	1069033	Protector® Panel Light Assembly	1	
5	1069258	Box, Assembly Auto Top Off Board	1	
5a	1068913	Box, Assembly Auto Top Off Board (for 2-Vat)	1	
6	8160747	Seal, Top Off Board	1	
7	1069611	PCB Board, Automatic Top Off 2	1	
8	8075129	Transformer - Dual Voltage 208-240V	1	
8a	8074978	Transformer - Dual Voltage 100-120V/12V 30VA /24V 50VA	1	
9	2204352	Cover, Top Off Board 3, 4 or 5-Vat	1	
9a	2203987	Cover, Top Off Board 2-Vat	1	
10	8073575	Plug, Carling Switch Hole	1	
11	1069615	Automatic Top-Off Board Assembly, 120V Assy	1	
11a	1069616	Automatic Top-Off Board Assembly, 208-240V Assy	1	
12	1069680SP	Pump, 0.25 FNPT 12VDC, 19PSI 15.1GPH	1	
13	8074412	Solenoid Manifold Top-Off (includes three solenoid assemblies)	1	
14	8074587	Solenoid Manifold Top-Off (includes two solenoid assemblies)	1	
15	8074590	Solenoid	1	
16	8103270	Fitting, 0.375" Flare x 0.25 " NPT	1	
17	8160708	Fitting, 0.25" NPT Male Barb	1	
18	8160710	Fitting, 0.25 NPT x 0.5 Barb 90°	1	
19	8130640	Plug, 0.25" Square Head	1	
20	8111139	Hose, Silicone Braided	1	
21	8103266	Flexline - 0.5" OD x 19.5" L	1	[1]
21a	8103265	Flexline - 0.5" OD x 24" L	1	[1]
21b	8103263	Flexline - 0.5" OD x 36" L	1	[1]
21c	8103264	Flexline - 0.5" OD x 42" L	1	[1]
22	1068512	Cap, JIB Assembly	1	
23	2303737	Cap, JIB	1	
24	8103242	Hose	1	
25	8103300	Inlet, Oil Reservoir Tube	1	
26	8103334	Bushing, Heyco	1	
27	1069495	Cap, BIB Assembly	1	
28	8236812	Cap, JIB	1	
29	8103242	Hose	1	
30	8103300	Inlet, Oil Reservoir Tube	1	
31	8103334	Bushing, Heyco	1	

PART NOTES:

[1] - used between solenoid and top off port

Protector® Series Electric Fryers

Basket Lift Assembly and Associated Parts



Protector® Series Electric Fryers

Basket Lift Assembly and Associated Parts

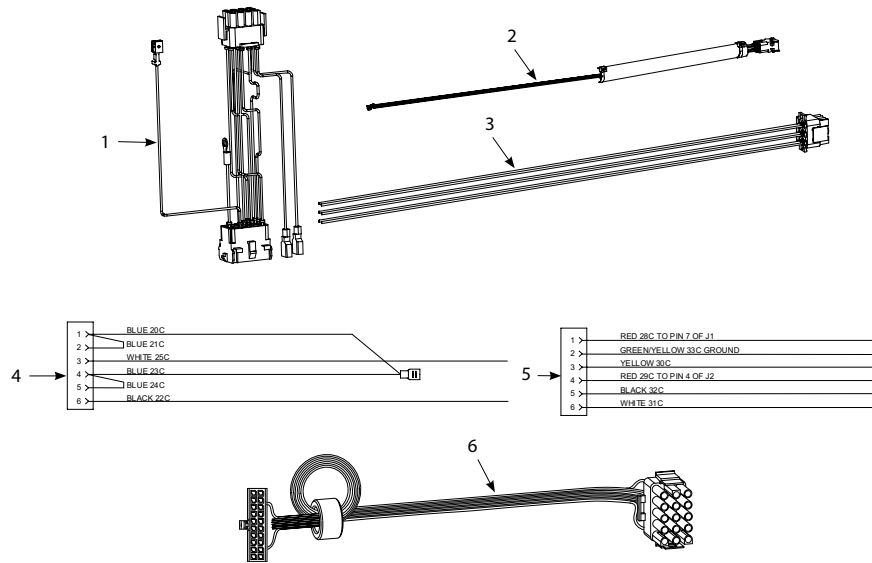
#	PART #	DESCRIPTION	QTY	Note
1	1061805SP	Basket Lift Assy, 200-220VAC w/Relay	1	[1]
2	8101012	Rod, Basket Lift	1	
3	8130035	Bushing , Oiltite .640 I.D.	1	
4	8072513	Capacitor - 12.5 MFD/330VAC	1	
5	9018499	Chassis, Left Basket Lift	1	
6	9028499	Chassis, Right Basket Lift	1	
7	8070159	12-Pin Female	1	
8	9005529	Gusset, Basket Lift Motor	1	
9	8120442	Insulation, Microswitch	1	
10	8072572	Microswitch	1	
11	8065964SP	Motor Assembly - 208-240V	1	
12	2002942	Mount, Modular Basket Lift	1	
13	8071683	Relay, 12VDC Secondary Blower Fan to cool frypot	1	
14	1062770SP	Resistor Assy, 208-220VAC Modular Basket Lift	1	
15	8090082	Ring, Bushing Retainer	1	
16	9104776	Cover, Modular Basket Lift Rear S/S	1	
16a	9004776	Cover, Modular Basket Lift Rear S/S	1	
17	8090127	Screw, 0.25-20 X 0.5-inch Slotted Round Head	1	
18	8237052	Weldment, Vent 2-battery, 5 battery and 6-battery	1	
19	8237053	Weldment, Vent 3-battery and 5-battery	1	
20	8100179	Button, Plug	1	
21	8069110SP	Roller Assembly, Basket Lift	1	
22	9108112	Bracket, Basket Lift Roller	1	
23	8100194	Roller, Basket Lift	1	
24	8100374	Spacer, Basket Lift Roller	1	
25	8090508	Bolt - 0.25-20 x 1.25"	1	
26	8090190	Washer, .625 X .275 X 40 Flat SS	1	
27	8090047	Nut, Cap- 0.25-20 High Profile S/S	1	
28	WIR0166SP	Wire Bundle, 200-250VAC Basket Lift w/Relay	1	
29	1065957SP	Basket Lift Harness	1	[2]

PART NOTES:

- [1] - Items 2-21
- [2] - Plugs into Item 7

Protector® Series Electric Fryers

Component Box and Wiring



Protector® Series Electric Fryers

Component Box and Wiring

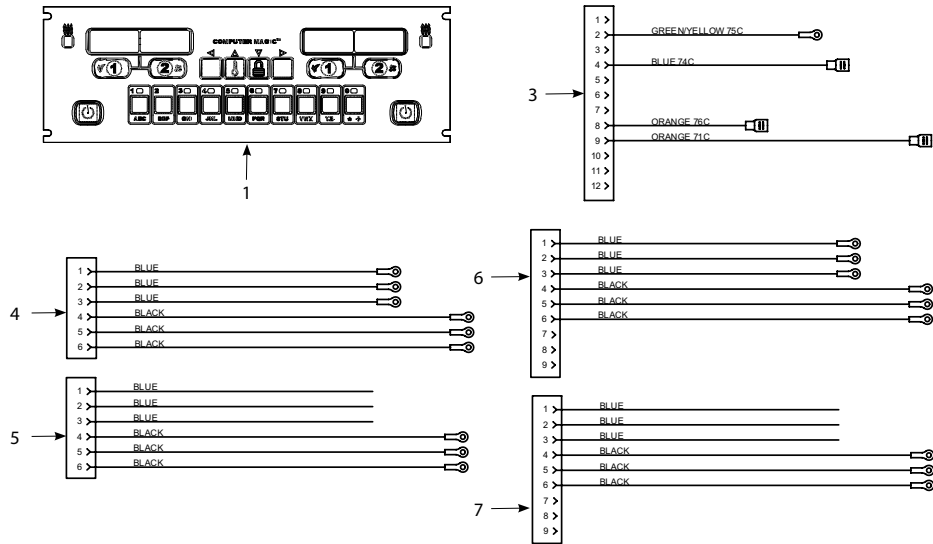
#	PART #	DESCRIPTION	QTY	Note
1	1065750SP	Full Vat Control Harness J4 to J2	1	
1a	1066639SP	Harness Assembly, FV Control	1	
2	1065935SP	Component Box to Filter Pump Harness	1	
3	1065957SP	Basket Lift Harness	1	
3a	1066640	Harness Assembly, Basket Lift	1	
4	1065935SP	Component Box to Filter Pump Harness	1	
5	1065957SP	Basket Lift Harness	1	
6	8074199	Cable, 20-pin Controller to 15-pin Interface Board – SMT for fryer's with CM 3.5 controller.	1	
7	8074546	Controller Communication	1	[1]
8	8074655	Harness RTD Medium	1	[2]
9	8074654	ATO RTD Probe	1	
10	8074621	FV/DV Harness RTD Short	1	[2]
11	8074553	ATO Power	1	[3]
12	8074671	ATO Pump/JIB Reset/Bulk Fresh Oil Solenoid Harness	1	[4]
13	8074555	ATO Yellow LED	1	[5]
14	8074573	Controller Locator Wire	1	[6]
15	8074552	Communications Terminator	1	[7]
16	8074657	Jumper	1	[8]
17	1069256SP	Long Top-off Power	1	[9]
18	8074646	Controller Communication	1	
19	8074660PK	SMT Pin Service Repair Kit	1	
20	2302345	SMT Pin Extractor	1	

PART NOTES:

- [1] - used from Computer to Computer
- [2] - used from RTD to ATO Board
- [3] - used from Transformer to ATO Board
- [4] - used from ATO Board to Top-off Pump and JIB Reset Switch
- [5] - used from ATO Board to Yellow LED
- [6] - used from Computer to Interface Board
- [7] - used on Computer pin J6 and ATO board pin J10 to terminate network
- [8] - used on 4 and 5 battery ATO board plug J5 pin 7 and 8
- [9] - used between Component Box to ATO Box

Protector® Series Electric Fryers

Computers and Wiring



Protector® Series Electric Fryers

Computers and Wiring

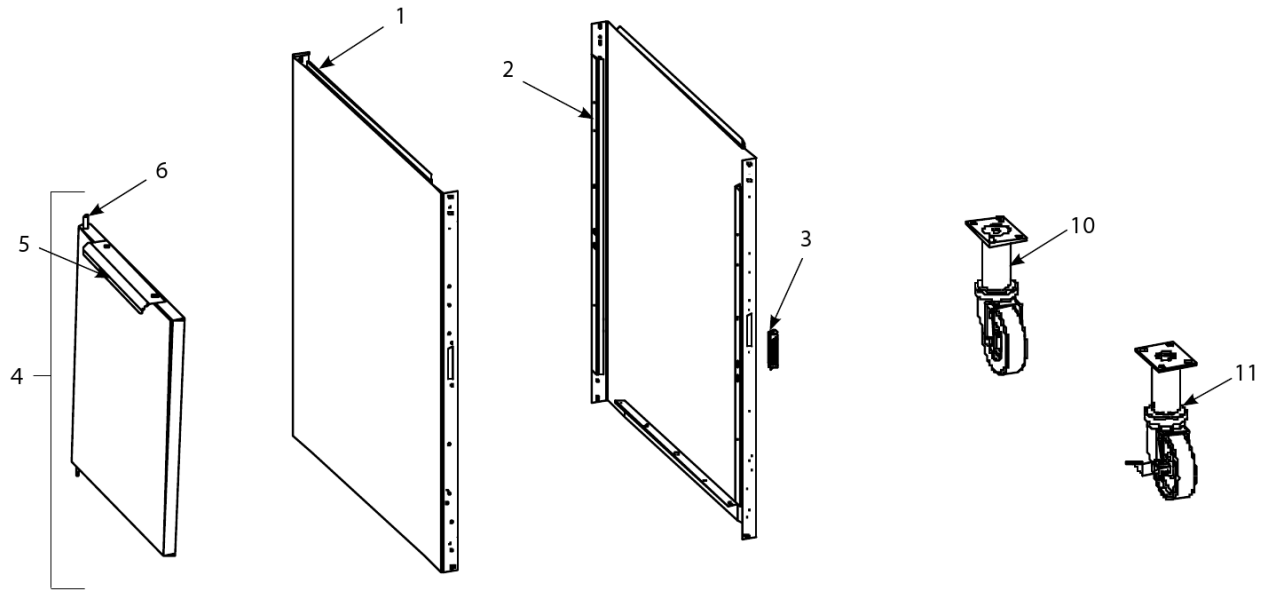
#	PART #	DESCRIPTION	QTY	Note
1	1068898	Replacement CM7 Computer, Non-CE CM7	1	[1]
1a	1068900	Replacement CM7 Computer, Non-CE CM7 EPRI	1	[2]
1b	1068902	Replacement CM7 Computer, CE CM7	1	[3]
1c	1068904	Replacement CM7 Computer, CE CM7 EPRI	1	[4]
2	8103141	Sound Device, Universal SMT	1	
3	1066031SP	Contactora Box Wiring Assemblies – 12-Pin Full-Vat C-1, Contactora Box Harness Assembly Full Vat Standard EPRI	1	[5]
4	1066768SP	Contactora Box Wiring Assembly – 6-Pin (Left Element), 14/17 kW Standard Mercury Contactora	1	
4a	1067849SP	Contactora Box Wiring Assembly – 6-Pin (Left Element), 22 kW Triac SSR	1	
5	1066771SP	Contactora Box Wiring Assembly – 6-Pin (Left Element), 14/17 kW Mechanical Contactora	1	
5a	1067851SP	Contactora Box Wiring Assembly – 6-Pin (Left Element), 22 kW Mercury and High Amp Mechanical Contactora	1	
6	1066769SP	Contactora Box Wiring Assembly – 9-Pin (Right Element), 14/17 kW Standard Mercury Contactora	1	
6a	1067850SP	Contactora Box Wiring Assembly – 9-Pin (Right Element), 22 kW Triac SSR	1	
7	1066772SP	Contactora Box Wiring Assembly – 9-Pin (Right Element), 14/17 kW Mechanical Contactora	1	
7a	1067852SP	Contactora Box Wiring Assembly – 9-Pin (Right Element), 22 kW Mercury and High Amp Mechanical Contactora	1	

PART NOTES:

- [1] - For use in US, Canada, Mexico and all other non-CE countriesreplaces [1080227](#)
- [2] - For use in US, Canada, Mexico and all non-CE countriesreplaces 1080229
- [3] - For use in European CE countriesreplaces [1080223](#)
- [4] - For use in European CE countriesreplaces 1080225
- [5] - uses harness above plus wire kits WIR0733 and WIR0736See wiring diagrams on pages 1-33 and 1-34

Protector® Series Electric Fryers

Doors, Sides and Casters



Protector® Series Electric Fryers

Doors, Sides and Casters

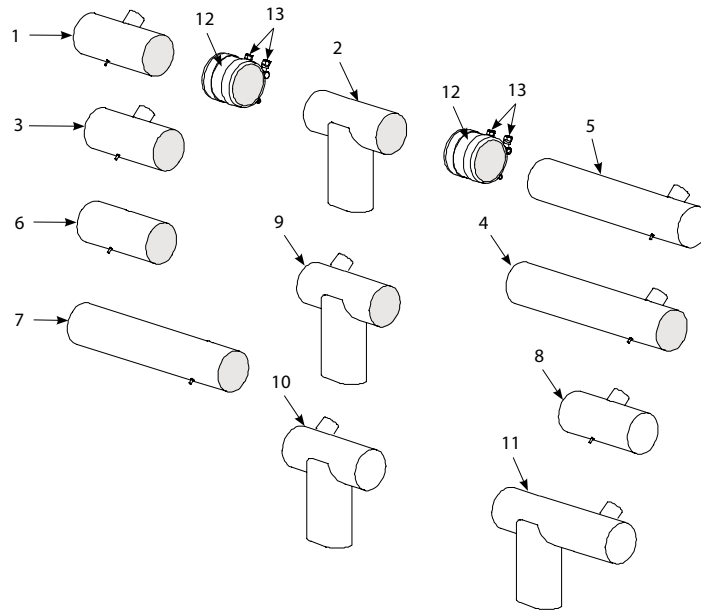
#	PART #	DESCRIPTION	QTY	Note
1	2310323SP	Side, Standard Cabinet Left SS	1	
1a	2210323SP	Side, Standard Cabinet Left SS - Enameled Steel	1	
2	2320323SP	Side, Standard Cabinet Right SS	1	
2a	2220323SP	Side, Standard Cabinet Right SS (for Enameled Steel)	1	
3	8101105	Door Magnet - Vertical	1	
3a	8102346	Door Magnet - Horizontal	1	[1]
4	1064397	Door - Left/Right	1	[2]
5	2109739	Handle, Eurolook Door	1	
6	1064067SP	Door Pin Assembly	1	
7	8261343	Spring - Door Pin Hinge	1	
8	8090970	Retaining Ring	1	
9	2307192	Hinge, Door Lower	1	
10	8101494	Caster, 8.5-inch Swivel w/o Brake	1	
11	8102970	Caster with Brake	1	

PART NOTES:

- [1] - over filter pan
- [2] - Left shown – move handle to bottom for right

Protector® Series Electric Fryers

Drain System Components - Drain Tube Sections and Associated Parts



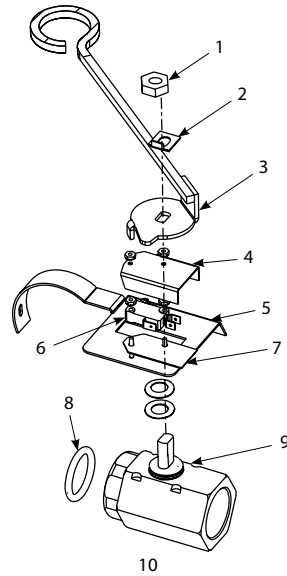
Protector® Series Electric Fryers

Drain System Components - Drain Tube Sections and Associated Parts

#	PART #	DESCRIPTION	QTY	Note
1	8234625	Drain Tube, Short Full-Vat Left Open/Right End Closed	1	
2	8236663	Drain Tube, Dump	1	
3	8234643	Drain Tube, Full-Vat, Short, Open Both Ends	1	
4	8234641	Drain Tube, Long Full-Vat Open Both Ends	1	
5	8234639	Drain Tube, Long Full-Vat Left Open/Right End Closed	1	
6	2205395	Drain Tube, Full-Vat, Short, Spreader, Open Both Ends	1	
7	2205396	Drain Tube, Full-Vat, Long, Spreader, Open Both Ends	1	
8	8237093	Drain Tube, Full-Vat Two Battery Right Left Open/Right End Closed	1	
9	8237094	Drain Tube, Dump Two Battery Left Closed, Right Open	1	
10	8237103	Drain Tube, Dump Two Battery w/ Spreader, Left, Both Ends Closed	1	
11	8237104	Drain Tube, Dump Two Battery w/ Spreader, Right, Both Ends Closed	1	
12	8160772	Sleeve	1	
13	8090969	Clamp 3"	1	
14	8160630	Cap, Vinyl Black	1	

Protector® Series Electric Fryers

Drain System Components - Drain Valves and Associated Parts



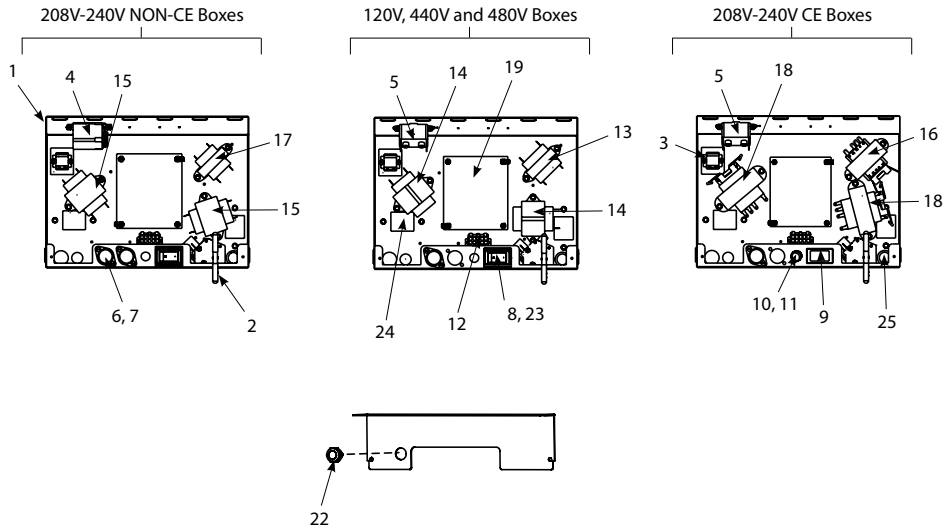
Protector® Series Electric Fryers

Drain System Components - Drain Valves and Associated Parts

#	PART #	DESCRIPTION	QTY	Note
1	8090540	Nut, Lock 0.5-inch-13 Hex 2-Way ZP	1	
2	9002936	Retainer Nut (FV)	1	
3	8236634	Handle, Drain Valve FV	1	
4	9012348	Cover, Dual-Vat Left Drain Safety Switch	1	
5	1069031	Bracket, Elec. Protector FV	1	
6	8072104	Microswitch	1	
7	8160220	Insulation, Microswitch	1	
8	8160135	O-ring	1	
9	8101018	Drain Valve, 1.25", Left	1	
10	1069640	Full Vat Drain Valve Assembly	1	

Protector® Series Electric Fryers

Electronics and Wiring Components - Component Boxes



Protector® Series Electric Fryers

Electronics and Wiring Components - Component Boxes

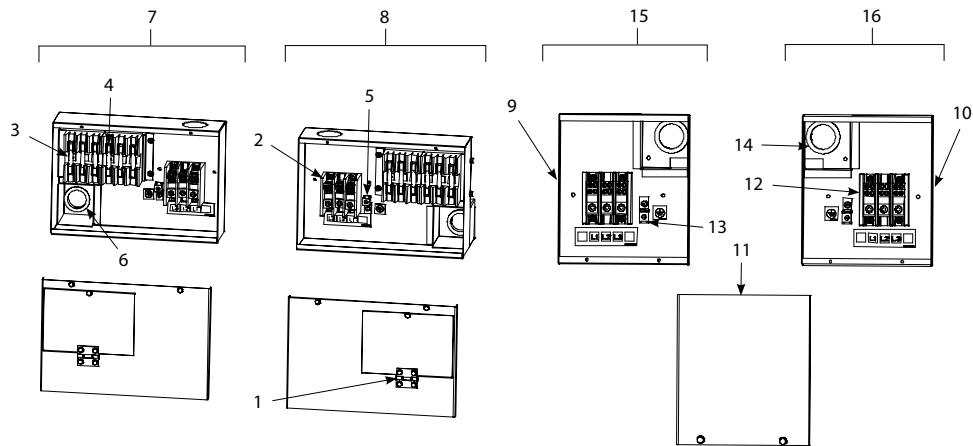
#	PART #	DESCRIPTION	QTY	Note
1	1065592	Box Assembly, Component	1	
2	1066094	Handle, Assembly Oil Return	1	
3	8069495SP	Terminal Block and Wire Assembly	1	
4	8070670	Relay, 24V DPDT	1	
5	8070012	Filter Relay - 18A 24VAC	1	
6	8070922	Holder, Bus Fuse	1	
7	8072278	Fuse, 20 Amp	1	
8	8074036	Switch	1	
9	8073575	Plug, Carling Switch Hole	1	[1]
10	8071321	Holder, Fuse	1	
11	8071597	Fuse - 3amp Slo-Blow	1	
12	1066639SP	Harness Assembly, FV Control	1	
12a	1066640	Harness Assembly, Basket Lift	1	
13	8070855	Transformer - 120V/50-60 Hz - 12V 20VA	1	
14	8070800	Transformer, 100-120V/24V 50VA Filter and MIB	1	
15	8070680	Transformer, 208V, 50/60Hz -24V 20VA	1	
16	8072191	Transformer - 208-240V -12V 30VA	1	
17	8070979	Transformer, 208V/240V/12V	1	
18	8072180	Transformer - 208-240V/24V 50A	1	
19	8262260	Standard Interface Board	1	[2]
19a	8262261	EPRI, Interface Board	1	[2]
19b	1066501	Interface Borad, Fallback Controller Assembly	1	
20	8090349	Spacer, 4mm X 6mm Aluminum	1	
21	8103141	Sound Device, Universal SMT	1	
22	8074678	Switch, Momentary	1	
23	2300834	Guard, RE Box Switch	1	
24	8160217	Insulation, Terminal Block Paper	1	
25	8100045	Bushing, .875 Dia. Hole 0.6875"	1	
26	8262249	RE Hood/Ansul Interlock Kit	1	[3]

PART NOTES:

- [1] - used on some models without a switch
- [2] - includes sound harness
- [3] - includes terminal block, wires and connectors

Protector® Series Electric Fryers

Electronics and Wiring Components - Fuse Boxes and Terminal Blocks



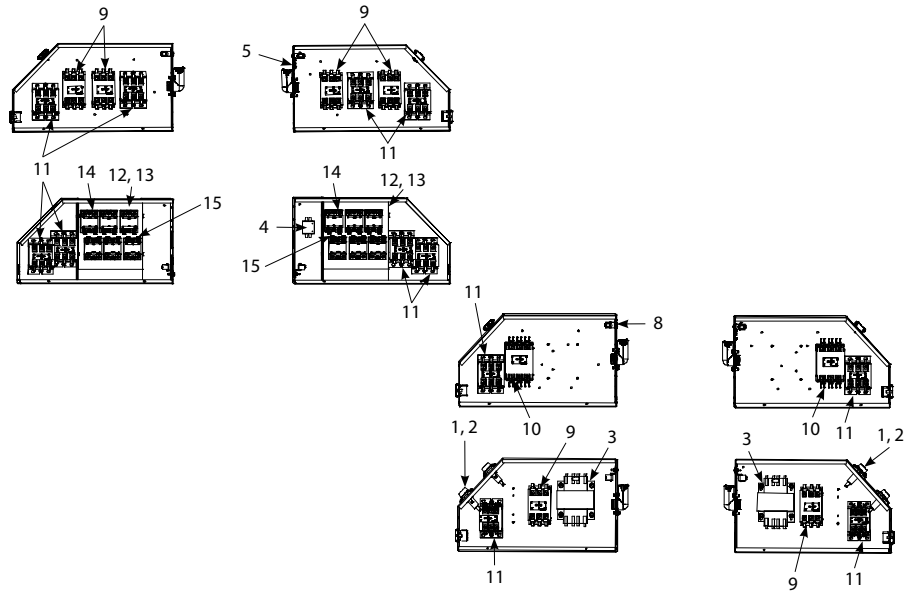
Protector® Series Electric Fryers

Electronics and Wiring Components - Fuse Boxes and Terminal Blocks

#	PART #	DESCRIPTION	QTY	Note
1	8100519	Hinge	1	
2	8073970	Block, Terminal 3 pole 600V 175A	1	
3	8070501	Fuseholder block	1	
4	8072240	Fuse, 60 AMP 300VAC	1	
5	8070070	Terminal, Ground Lug	1	
6	8070128	Bushing, Insulating Heyco	1	
7	1065505	Left 22kW and Single Phase Fuse Box Assembly	1	
7a	1066678	Left 22kW and Single Phase Fuse Box Assembly	1	
8	1065506	Right 22kW and Single Phase Fuse Box Assembly	1	
8a	1066679	Right 22kW and Single Phase Fuse Box Assembly	1	
9	8235631	Box, LH Rear Terminal Block	1	
10	8235632	Box, RH Rear Terminal Block	1	
11	2200801	Cover, Rear Terminal Block Box	1	
12	8073970	Block, Terminal 3 pole 600V 175A	1	
13	8070070	Terminal, Ground Lug	1	
14	8070128	Bushing, Insulating Heyco	1	
15	1065817	Left Hand Terminal Block	1	
16	1065822	Right Hand Terminal Block	1	

Protector® Series Electric Fryers

Electronics and Wiring Components- Contactor Boxes



Protector® Series Electric Fryers

Electronics and Wiring Components- Contactor Boxes

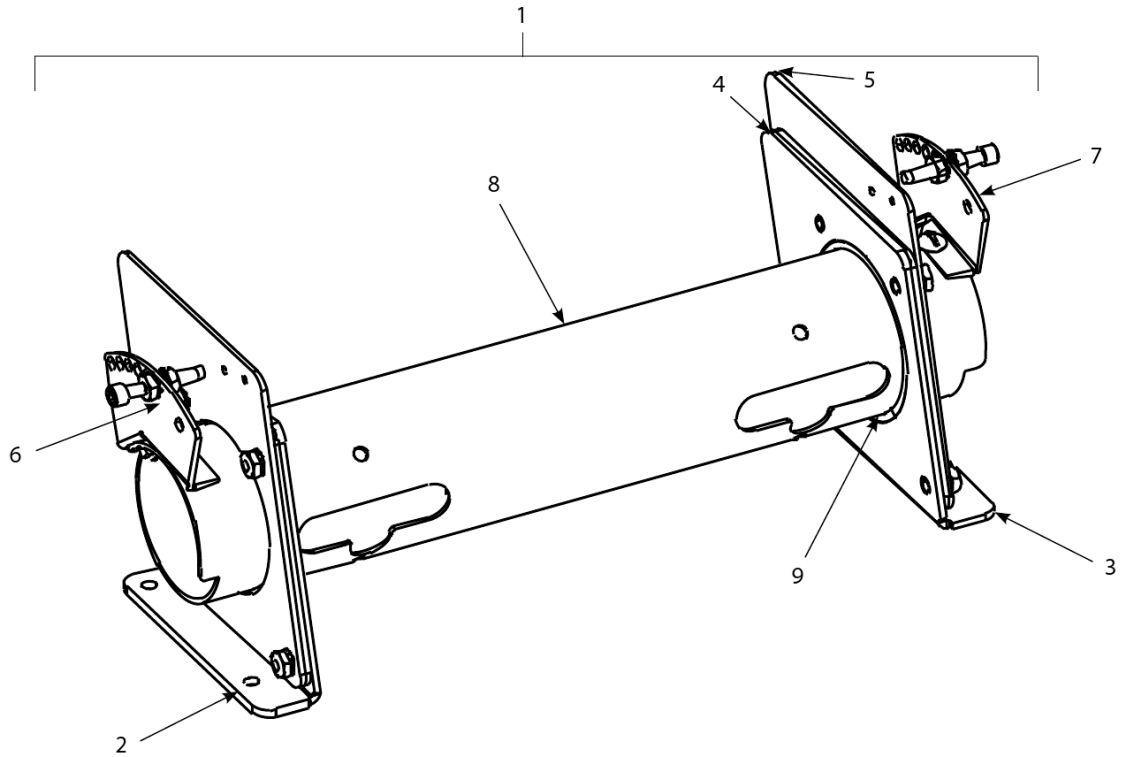
#	PART #	DESCRIPTION	QTY	Note
1	8072278	Fuse, 20 Amp	1	
2	8070922	Holder, Bus Fuse	1	
3	8070064	Transformer, 480V/120V 150 VA	1	
4	1066204SP	Filter Assembly, EPRI	1	[1]
5	8102554	Plug, Cord Cutout 1.125 Button	1	
6	8071947	Plug, .875	1	
7	8070064	Transformer, 480V/120V 150 VA	1	
8	8070070	Terminal, Ground Lug	1	
9	8072284	Contactactor, 24V 50 Amp Mechanical	1	[2]
10	8072283	Contactactor, 24V 63 Amp Mechanical	1	[3]
11	8101202	Contactactor, 24V 40 Amp Mechanical	1	[4]
12	8068673	Heat Sink Assembly, Full-vat Solid State Relay	1	[5]
13	8261562	Relay with Heat Sink - 280V/40A	1	
14	8072749	Heat Sink - Solid State	1	
15	8070037	Terminal, 0.25-inch Push-on	1	
16	2210482	Cover, Left Contactor Box	1	
16a	2220482	Cover, Right Contactor Box	1	
17	8070012	Filter Relay - 18A 24VAC	1	

PART NOTES:

- [1] - Used on some CE WYE configurations
- [2] - only in 14kW & 17kW unitsHeat
- [3] - only in 22kW unitsHeat
- [4] - Latch
- [5] - Full Vat has three relays, Dual-Vat has six relays

Protector® Series Electric Fryers

Element Tube Assemblies



Protector® Series Electric Fryers

Element Tube Assemblies

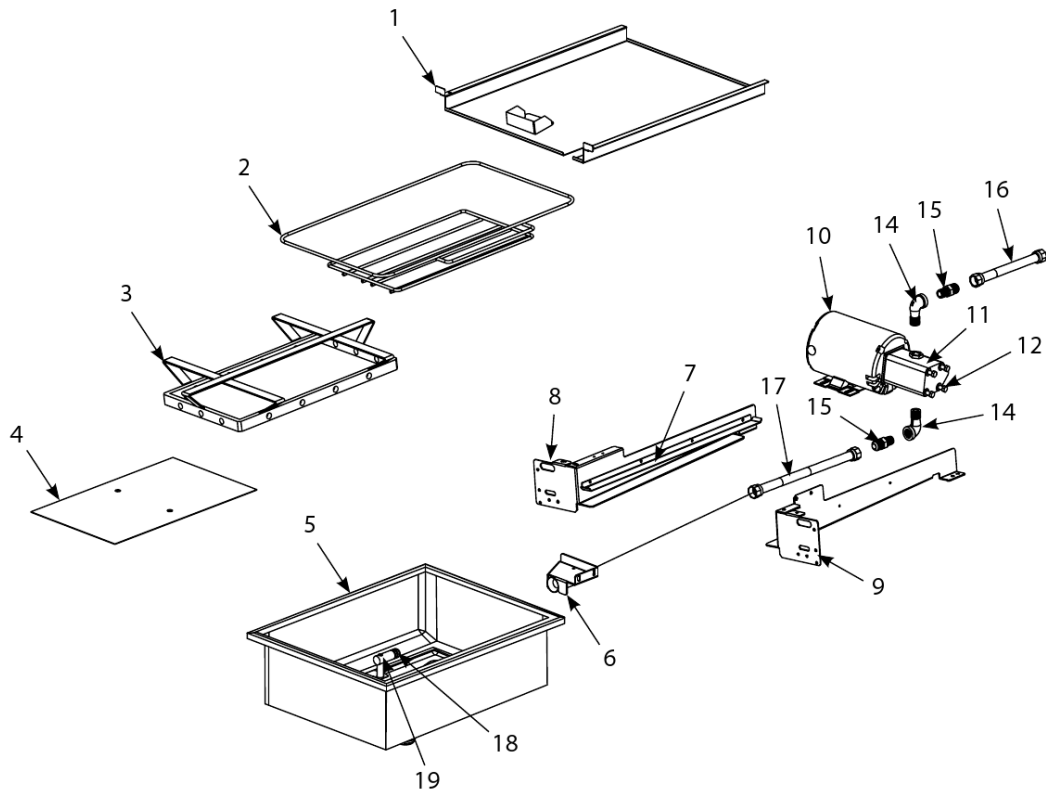
#	PART #	DESCRIPTION	QTY	Note
1	1067653SP	Tube Assembly Element, Full-Vat	1	
2	1080315	Bracket Assembly, LH Element Tube Support	1	
3	1080316	Bracket Assembly, RH Element Tube Support	1	
4	2200122	Plate, Element Tube Support Inner	1	
5	2200123	Plate, Element Tube Support Outer	1	
6	1067651SP	Bracket Assembly, LH Upper Spring	1	
6a	1066569	Bracket Assembly, LH Upper Spring	1	
7	1067652SP	Bracket Assembly, RH Upper Spring	1	
7a	1066570	Bracket Assembly, RH Upper Spring	1	
8	8102992	Tube, Full Vat Element Mounting	1	
9	8102993	Bushing, Tube End Teflon	1	
10	1066587	Magnetic Position Sensor	1	
10a	8262228	Tilt Switch, CE	1	[1]
10b	8103007	Magnet - Ring	1	
10c	2300794	Bracket, Magnetic Position Sensor Wire	1	

PART NOTES:

[1] - Full-Vat requires one switch and Dual-Vat requires two

Protector® Series Electric Fryers

Filtration System Components



Protector® Series Electric Fryers

Filtration System Components

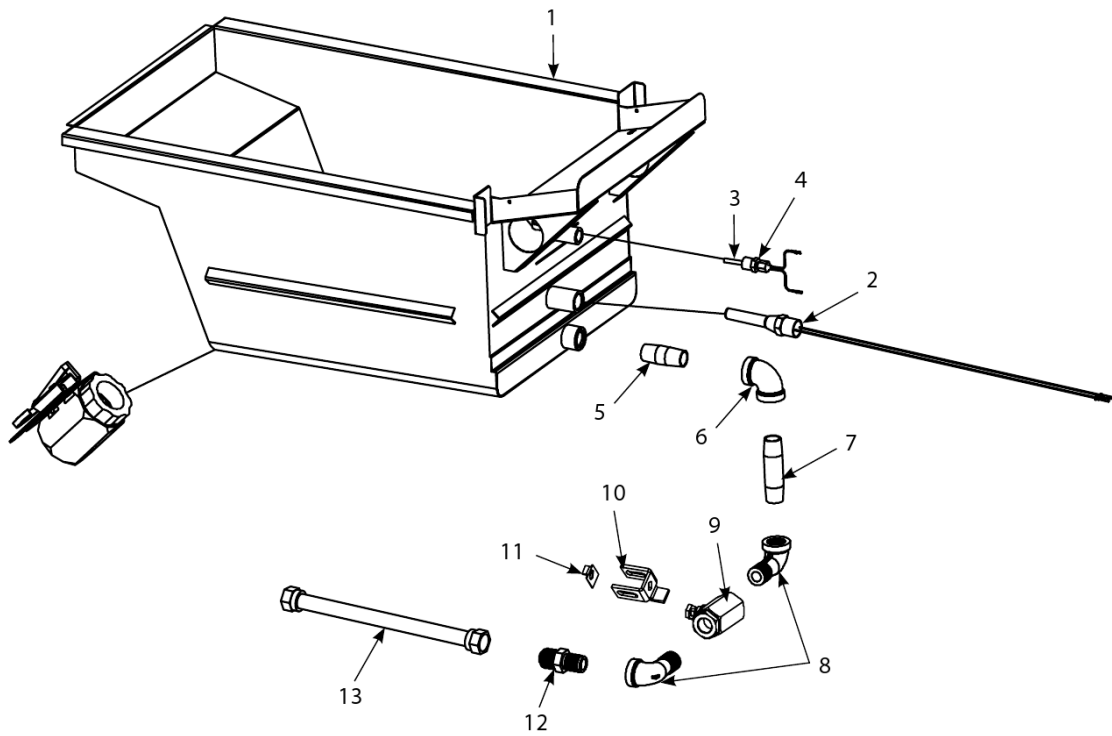
#	PART #	DESCRIPTION	QTY	Note
1	8236560	Lid, Multi-Vat Fryers, Standard Size Filter Pan	1	
1a	8236362	Lid, Two-Vat Fryer, Half Size Filter Pan	1	
2	8103276	Crumb Tray, Standard Size Filter Pan 3, 4 and 5 Vat	1	
2a	8103288	Crumb Tray	1	
3	8103419	Hold-Down Ring for Paper 13.65 x 21.41, Standard Size Pan 3, 4, and 5 Vat	1	
3a	8103289	Hold-Down Ring - 11.2 x 19.1	1	
4	8122025	SanaGrid Filter Screen	1	
4a	8122041	SanaGrid Filter Screen, Two-Vat Fryer, Half Size Filter Pan	1	
5	1080549SP	Pan, One-Piece Filter LOV Standard Size	1	
5a	1068211SP	Pan, Two-Vat Fryer, Half Size	1	
6	8236191	Suction Tube Standard	1	
6a	8236399	Suction Tube Two Vat	1	
7	2203879	Rail, Filter Pan Retaining Standard	1	
7a	2202999	Rail, Filter Pan Retaining Two Vat	1	
8	2203748	Support, Left Filter Pan	1	
8a	2203275	Support, Left Filter Pan Two Vat	1	
9	2203749	Support, Right Filter Pan	1	
9a	1068487	Support, Right Filter Pan Two Vat	1	
10	8261785	Motor and Gasket Kit - 100V/50-60 Hz	1	
10a	8261712	Motor and Gasket Kit - 115V/50-60 Hz	1	
10b	8261756	Motor and Gasket Kit - 208V/50-60 Hz	1	
10c	8261270	Motor and Gasket Kit - 220-240V/50-60 Hz	1	
10d	8261755	Motor and Gasket Kit - 250V/50-60 Hz	1	
11	8261264	Pump Kit - 4 GPM	1	[1]
11a	8160093	Gasket - Pump/Motor	1	
12	8090514	Cap Screw - 0.3125" 18 NC Hex	1	[2]
13	80711973	Pump Seal Kit - Viking	1	
14	8130165	Elbow - 0.5" x 90° NPT Street	1	
15	8101668	Male Adaptor - 0.625" OD x 0.5"	1	
16	8101067	Flexline - Oil Return - 0.625" OD x 8.5" L	1	
17	8101057	Flexline - Oil Return - 13" L	1	
18	8261392	O-Ring	5	
19	8130568	Plug, 0.125" SS NPT, Sq-Head	1	[3]
20	1065911SP	Heater Strip Assembly, 100-120V 25W 18"	1	
20a	1065912SP	Heater Strip Assembly -208-250V/25W - 18"	1	

PART NOTES:

- [1] - includes gasket and capscrews below
- [2] - Connects pump to motor.
- [3] - two required

Protector® Series Electric Fryers

Frypot Assemblies and Associated Parts



Protector® Series Electric Fryers

Frypot Assemblies and Associated Parts

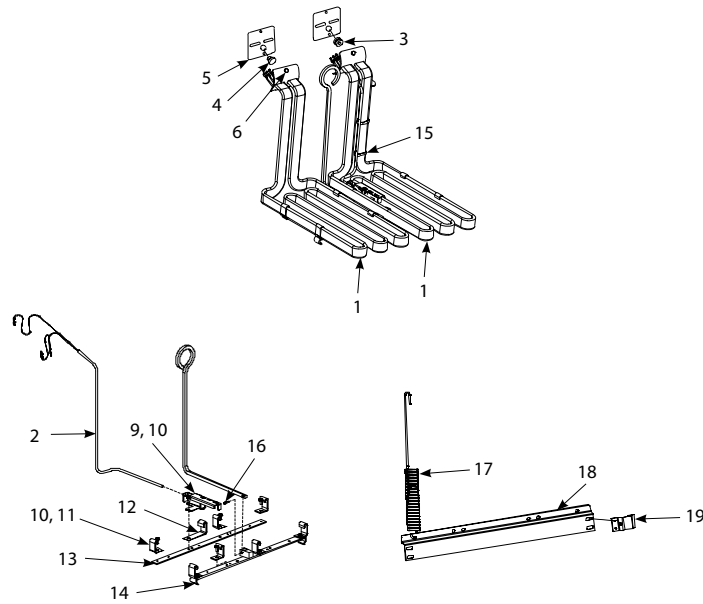
#	PART #	DESCRIPTION	QTY	Note
1	8236912	Frypot, Full-Vat	1	
2	8261177	Thermostat, High-Limit 425°F/218°C	1	[1]
2b	8262456	Thermostat Assembly - High-Limit - 435°F	1	[2]
2c	8068035SP	High-limit Thermostat	1	[3]
2d	8262455	Thermostat Assembly - High-Limit - 415°F	1	[4]
2e	8068132	High-Limit Thermostat, CE other than 22kW	1	[5]
2f	8262457	Thermostat Assembly, High-Limit Long Standard, CE Full Vat 405°F	1	[6]
2g	8068536	High-Limit Thermostat, CE 22kW	1	[7]
3	8074645	Probe, Temperature ATO RTD	1	
4	8130617	Fitting, 0.1875" x 0.25" NPT	1	
5	8130298	Nipple, 0.5" x 2.00" NPT BM Pipe	1	
6	8130062	Elbow - 0.5" BM x 90°	1	
7	8130460	Nipple, 0.5-inch X 3.0-inch NPT	1	
8	8130165	Elbow - 0.5" x 90° NPT Street	1	
9	8100278	Valve, 0.5" Ball	1	
10	2005438	Handle, Rear Flush Valve	1	
11	9002935	Retainer, Nut Oil Return Valve	1	
12	8101668	Male Adaptor - 0.625" OD x 0.5"	1	
13	8101055	Flexline - 0.625" OD x 11.5" L	1	

PART NOTES:

- [1] - 218°C14 and 17kW FV
- [2] - 224°C22kW
- [3] - 224°C22kW Color Coded Red
- [4] - 213°C14kW and 17kW CE
- [5] - Color-Coded Yellow
213°C14kW and 17kW CEColor-Coded Yellow
- [6] - 207°C22kW CE
- [7] - 207°C22kW CEColor-Coded White

Protector® Series Electric Fryers

Heating Element Assemblies and Hardware



Protector® Series Electric Fryers

Heating Element Assemblies and Hardware

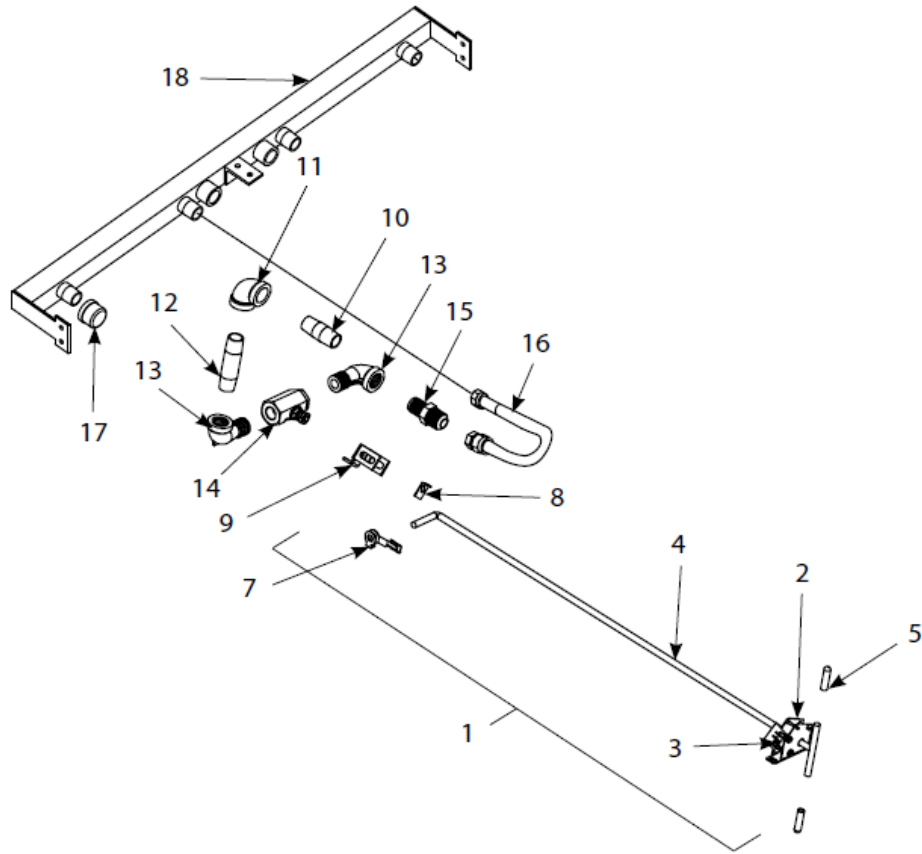
#	PART #	DESCRIPTION	QTY	Note
1	8262198	Element Kits - 200V - 17.0 kW	1	[1]
1a	8262201	Element Kits - 200V - 18.5 kW	1	[2]
1b	8262208	Element Kits - 200V - 11.0 kW	1	[2]
1c	8262192	Element Kits - 208V - 17.0 kW	1	[2]
1d	8262197	Element Kits - 208V - 18.5 kW	1	
1e	8262210	Element Kits - 208V - 11.0 kW	1	[2]
1f	8262200	Element Kits - 220V - 17.0 kW	1	[3]
1g	8262205	Element Kits - 220V - 11.0 kW	1	[2]
1h	8262193	Element Kits - 230V - 17.0 kW	1	[2]
1i	8262199	Element Kits - 230V - 18.5 kW	1	[2]
1j	8262206	Element Kits - 230V - 11.0 kW	1	[2]
1k	8262194	Element Kits - 240V - 17.0 kW	1	[2]
1l	8262207	Element Kits - 240V - 11.0 kW	1	[2]
1m	8262204	Element Kits - 400V - 8.5 kW	1	[2]
1n	8262195	Element Kits - 440V - 17.0 kW	1	[2]
1o	8262202	Element Kits - 440V - 18.5 kW	1	[2]
1p	8262211	Element Kits - 440V - 11.0 kW	1	[2]
1q	8262196	Element Kits - 480V - 17.0 kW	1	[2]
1r	8262203	Element Kits - 480V - 18.5 kW	1	[2]
1s	8262209	Element Kits - 480V - 11.0 kW	1	[2]
2	8262212	Temperature Probe Kit	1	
2a	8074324	Probe, Temperature Fast Ready	1	
3	8160681	Grommet, Probe	1	
4	8160480	Plug, .375-inch Dome	1	
5	8160688	Gasket, Element	1	
6	8091003	Screw - #10-32 x 0.375" Hex Trim Head SS	1	
7	8090766	Nut, 10-32 Keps Hex SS	1	
8	2304028	Wrench, Element Tube Nut Spanner	1	
9	9105022	Bracket, Temperature Probe	1	
9a	2300784	Bracket - Temperature Probe 8.5/11 kW	1	
10	8090518	Screw, 8-32 x 0.375-inch Hex Washer Slotted Head SS	1	
11	9102042	Clamp, Element	1	[4]
12	2300781	Key Operated Switch Ice With Keys	1	
13	2300780	Support, Full-Vat Element Rear	1	
14	8235621	Support, Full-Vat Element Front	1	
15	8090567	Tie-Wrap - Metal	1	
16	8101212	Pin, .125 X .5-inch Split	1	
17	2200464	Bracket, Lower Spring	1	
18	2200733	Bracket, Lower Spring Mating	1	
19	8101233	Handle, Element Lift	1	

PART NOTES:

- [1] - includes gaskets, grommets, tie wraps, screws and nuts also used for 220V 8.5 kW
- [2] - includes gaskets, grommets, tie wraps, screws and nuts
- [3] - includes gaskets, grommets, tie wraps, screws and nuts also used for 240V 8.5 kW
- [4] - Short

Protector® Series Electric Fryers

Oil Return System Components



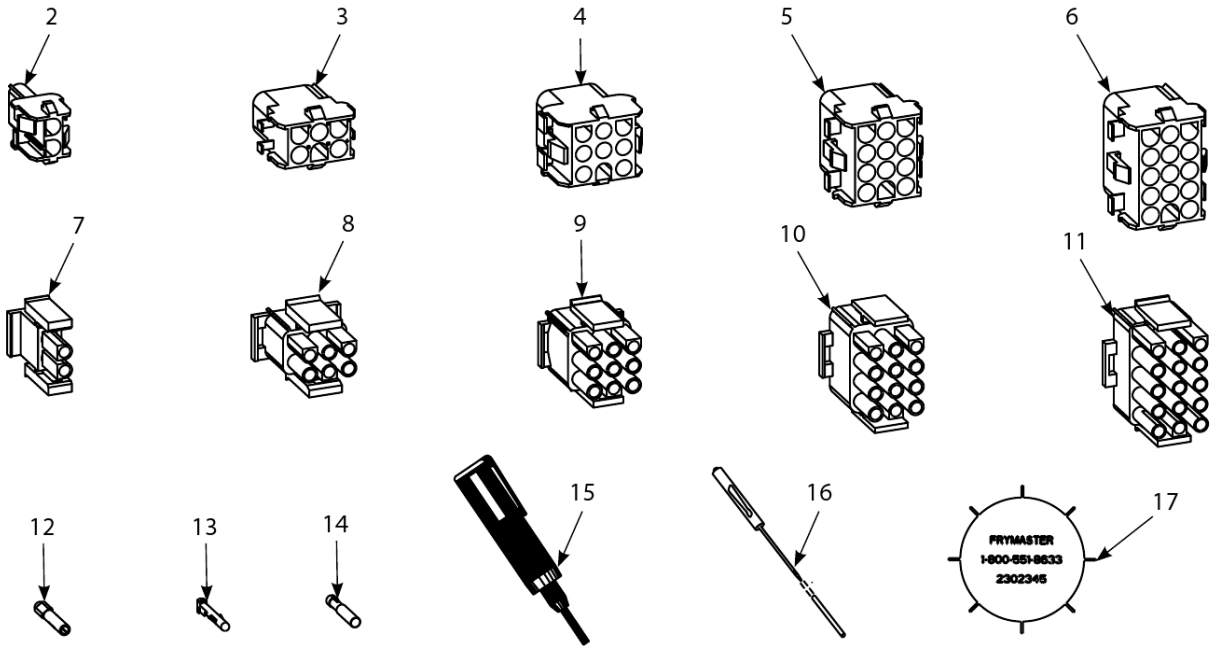
Protector® Series Electric Fryers

Oil Return System Components

#	PART #	DESCRIPTION	QTY	Note
1	1069044	Handle Assembly, Full-Vat Rear Flush Protector	1	
2	1065595	Bracket Switch Assembly	1	
3	8072103	Microswitch	1	
4	8236653	Handle, Oil Return Protector Rod	1	
5	8160643	Grip, Oil Return Valve Handle	1	
6	8160220	Insulation, Microswitch	1	
7	8090601	Clip, Clevis	1	
8	9002935	Retainer, Nut Oil Return Valve	1	
9	2005438	Handle, Rear Flush Valve	1	
10	8130298	Nipple, 0.5" x 2.00" NPT BM Pipe	1	
11	8130062	Elbow - 0.5" BM x 90°	1	
12	8130460	Nipple, 0.5-inch X 3.0-inch NPT	1	
13	8130165	Elbow - 0.5" x 90° NPT Street	1	
14	8100278	Valve, 0.5" Ball	1	
15	8101668	Male Adaptor - 0.625" OD x 0.5"	1	
16	8102532	Flexline - 7" L	1	
17	8130907	Cap, 0.9375-inch Valve Safety	1	
18	8103015	Manifold, Two-Station Fryer	1	
18a	8103016	Manifold, Three-Station Fryer	1	
18b	8103017	Manifold, Four-Station Fryer	1	
18c	8103018	Manifold, Five-Station Fryer	1	

Protector® Series Electric Fryers

Wiring Connectors, Pin Terminals, Power Cords and Fasteners



Protector® Series Electric Fryers

Wiring Connectors, Pin Terminals, Power Cords and Fasteners

#	PART #	DESCRIPTION	QTY	Note
1	8070154	Power Cord - 120V w/Ground Plug	1	
1a	8071685	Power Cord - 450V - 18A - 110-inch, 3-wire, 16-gauge	1	
1b	8073817	Power Cord - 208-250V/3 Ph - 74A - 96" - 4-wire w/plug 8 awg	1	
1c	8074668	Power Cords, 208-250V/84A 3-Phase 4-wire w/plug 96" 6 awg	1	
1d	8073834	Power Cords, Cable, 3-Phase 4-Wire	1	
1e	8073428	Power Cords, 220V/15A 3-wire, w/o plug Export 96" 8 awg	1	
1f	8073836	Power Cords, 240V/32A 3-Phase 5-wire w/plug Export 86.5"	1	
1g	8073835	Power Cords, 220-250V 3-Phase 4-wire w/o plug Export 92"	1	
1h	8073867	Power Cords, 220-250V/50A 3-Phase 5-wire w/plug Export 109"	1	
2	8071068	2-Pin Female	1	
3	8070158	6-Pin Female	1	
4	8070156	9-Pin Female	1	
5	8070159	12-Pin Female	1	
6	8070875	15-Pin Female	1	
7	8071067	2-Pin Male	1	
8	8070157	6-Pin Male	1	
9	8070155	9-Pin Male	1	
10	8070160	12-Pin Male	1	
11	8070804	15-Pin Male	1	
12	8261341	Terminal, Female Split Pin	25	
13	8261342	Terminal, Male Split Pin	25	
14	8072518	Plug, Mate-N-Lock	1	[1]
15	8070928	Extract Tool Pin Pusher	1	
16	8064855	Pin Pusher Screwdriver Assy	1	
17	2302345	SMT Pin Extractor	1	
17a	8074660PK	SMT Pin Service Repair Kit	1	
18	8090429	Bolt - 0.25"- 20 x 2.00" Hex Head ZP Tap	1	
18a	8261389	Screw - 0.25"-20 x 0.75" Hex Head ZP	1	
19	8091020	Cap Screw, 0.3125"-18 5.50" NC Hex	1	[2]
20	8090448	Clip, Tinnerman	1	
21	8261366	Nut - #4-40 Keps Hex	1	
22	8261358	Nut, 6-32 Keps Hex	1	
23	8090247	Nut - #8-32 Keps Hex	1	
24	8261376	Nut - #10-32 Keps Hex	1	
25	8090766	Nut, 10-32 Keps Hex SS	1	
26	8090581	Nut, 0.5 NPT Locking	1	
27	8090020	Nut Cap 10-24 NP	1	
28	8261372	Nut Grip 0.25-inch 0.25-20 Hex NP	1	
29	8261368	Nut - 0.25-20 Serrated Flange	1	
30	8090535	Nut, "T" 0.25-inch-20 x 0.4375 SS	1	
31	8090495	Nut, 0.25-inch - 20 Press	1	
32	8090540	Nut, Lock 0.5-inch-13 Hex 2-Way ZP	1	
33	8261359	Screw - #4-40 x 0.75" Slotted Round Head	1	
34	8261365	Screw, 6-32 x 0.375-inch Slot Head	1	

Protector® Series Electric Fryers

Wiring Connectors, Pin Terminals, Power Cords and Fasteners

#	PART #	DESCRIPTION	QTY	Note
35	8090357	Screw, 6 x 0.375-inch Phillips Head NP	1	
36	8090359	Screw, 8 x 0.25-inch Hex Washer Head	1	
37	8090360	Screw, 8 x 0.375-inch Hex Washer Slot Head	1	
38	8261371	Screw - #8 x 0.5" Hex Head ZP	1	
39	8090364	Screw - #8 x 0.625" Hex Washer Head ZP	1	
40	8090518	Screw, 8-32 x 0.375-inch Hex Washer Slotted Head SS	1	
41	8090104	Screw, 8-32 x 0.5-inch Slotted Head ZP	1	
42	8261363	Screw - #8-32 x 0.5" NP	1	
43	8261360	Screw - #10-24 x 0.3125" Round Slot Head ZP	1	
44	8261330	Screw, 10-32 x 0.375-inch Slot Head SS	1	
45	8091003	Screw - #10-32 x 0.375" Hex Trim Head SS	1	
46	8090270	Screw, 10-32 x 0.5-inch Phillips Head ZP	1	
47	8261375	Screw - #10-32 x 0.75" - Hex Trim Head SS	1	
48	8091000	Screw - #10-32 x 1.25" - Hex	1	
49	8261374	Screw - #10 x 0.5" Hex Head	1	
50	8090266	Screw, 10 x 0.5-inch Phillips Head ZP	1	
51	8090475	Screw - #10-32 x 0.3125" Hex	1	
52	8090123	Screw - #10 x 0.75" - Slot Head	1	
53	8261389	Screw - 0.25"-20 x 0.75" Hex Head ZP	1	
54	8090582	Washer 0.5 NPT Locking	1	
55	8090184	Washer, #10 LK ZP	1	
56	8090190	Washer, .625 X .275 X 40 Flat SS	1	
57	8090191	Washer, Lock 0.25 Spring ZP	1	
58	8090193	Flat Washer - 0.25" Nylon	1	
59	8090194	Flat Washer - 0.3125" ZP	1	

PART NOTES:

- [1] - Dummy Pin
- [2] - Connects pump to motor