

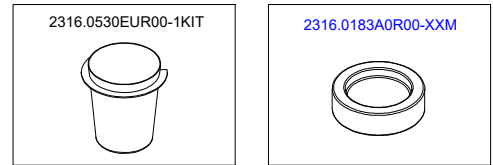


MIGNON SINGLE DOSE

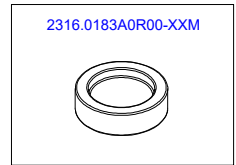
27/04/2023

ESGR-2316-01v2127

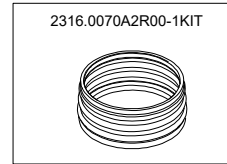
110V/60Hz - 220V/60Hz - 220-230V/50Hz - 230-240V/50Hz



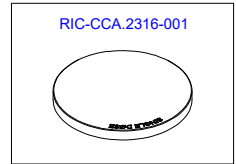
2316.0530EUR00-1KIT



2316.0183A0R00-XXM



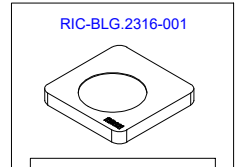
2316.0070A2R00-1KIT



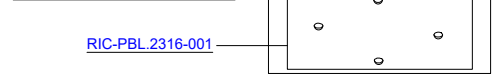
RIC-CCA.2316-001



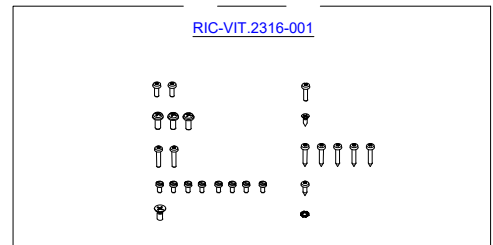
RIC-CAM.2316-001



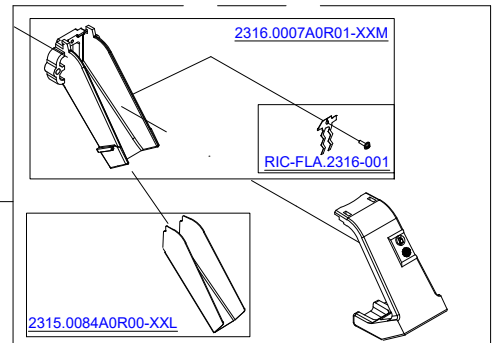
RIC-BLG.2316-001



RIC-PBL.2316-001

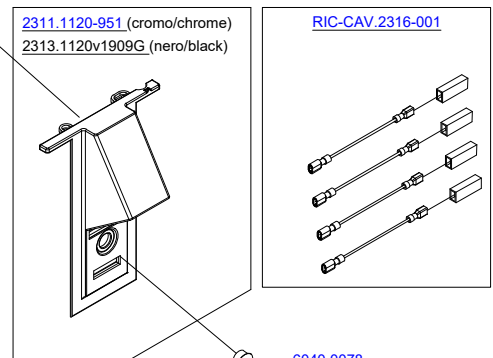


RIC-VIT.2316-001



2316.0007A0R01-XXM

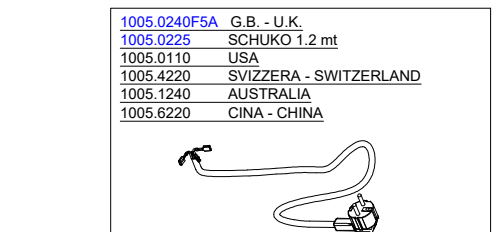
RIC-FLA.2316-001



2311.1120-951 (cromo/chrome)
2313.1120v1909G (nero/black)

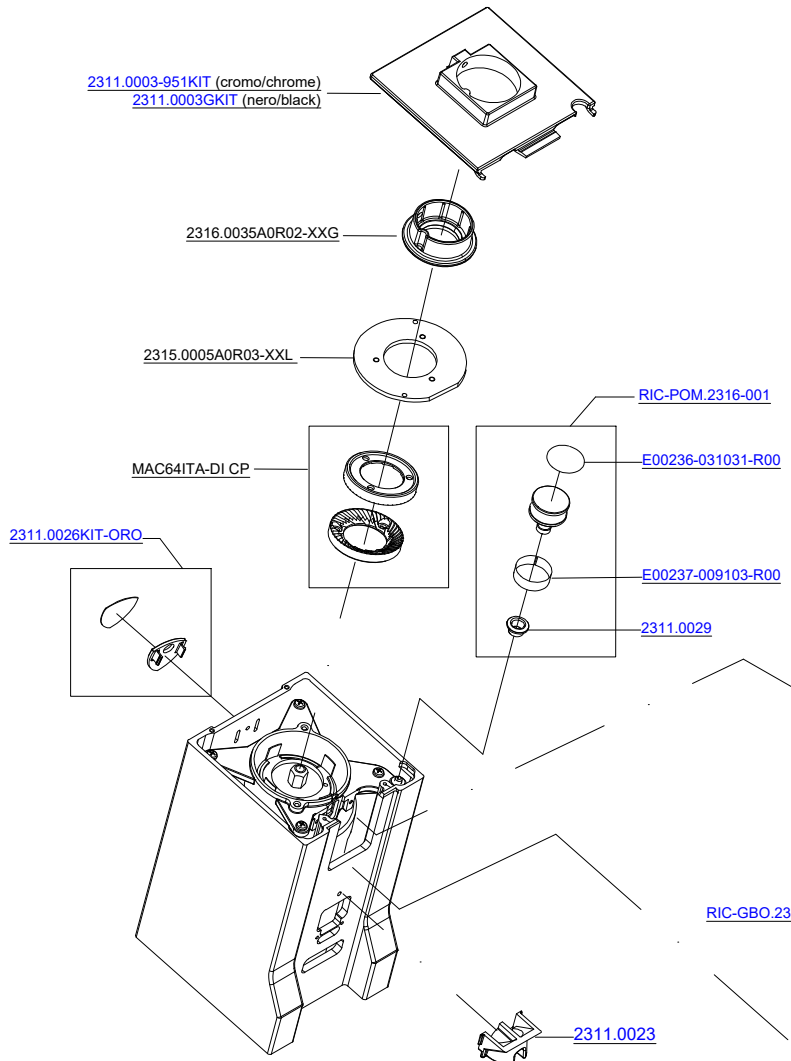
RIC-CAV.2316-001

6040.0078



1005.0240F5A G.B. - U.K.
1005.0225 SCHUKO 1.2 mt
1005.0110 USA
1005.4220 SVIZZERA - SWITZERLAND
1005.1240 AUSTRALIA
1005.6220 CINA - CHINA

RIC-PIE.2316-001



2311.0003-951KIT (cromo/chrome)
2311.0003GKIT (nero/black)

2316.0035A0R02-XXG

2315.0005A0R03-XXL

MAC64ITA-DI CP

2311.0026KIT-ORO

RIC-POM.2316-001

E00236-031031-R00

E00237-009103-R00

2311.0029

RIC-GB0.2316-001

2311.0023

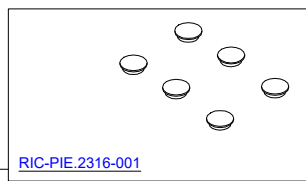
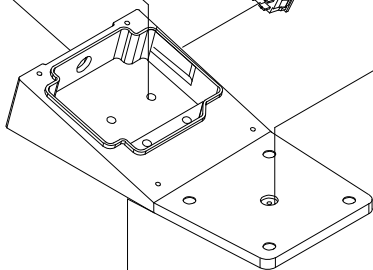
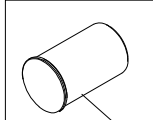
RIC-BA2.2316-001 (220V nero/black)
RIC-BA2.2316-002 (220V bianco/white)
RIC-BA2.2316-003 (220V cromo/chrome)

RIC-BA1.2316-001 (110V nero/black)
RIC-BA1.2316-002 (110V bianco/white)
RIC-BA1.2316-003 (110V cromo/chrome)

1013.D008WM-R00 (220V)
1013.0025-WM (110V)

1011.0022

6040.0104





UNIQUE GRINDING
SOLUTIONS

Listino ricambi / Spare Parts Price List

MIGNON SINGLE DOSE

ARTICOLO ITEM N°	DESCRIZIONE DESCRIPTION
1005.0110	CABLAGGIO UL/CSA V110 USA/CANADA PLUG V110
1005.0225	CABLAGGIO MONOFASE mt.1,20 spina schuko SCHUKO PLUG 1.2 mt V220
1005.1240	CABLAGGIO VOLT. 240 per Australia AUSTRALIA PLUG V230-240
1005.4220	CABLAGGIO MONOFASE per Svizzera SWITZERLAND PLUG V220-230
1005.6220	CABLAGGIO MONOFASE per Cina CHINA PLUG V220-230
1011.0022	INTERR. MONOFASE A BASCULA x MB/ME/MP/XL POWER SWITCH
1013.0008	CONDENSATORE MF. 8 /450 MCF/MCI CAPACITOR 8 / 450I
2311.0023	TASSELLO PORTAFILTRO MIGNON ME/MP FILTER HOLDER MIGNON
2311.0029	GUARNIZIONE POMELLO MIGNON v. 1708 MIGNON KNOB SEAL
6040.0078	TAPPO DECORATIVO A=11.9 B=17.5 FRONT PLUG
6040.0104	MAGNETE 12X5X2 SINGLE DOSE MAGNET
1005.0240F5A	CABLAGGIO VOLT. 240 per GB + fus. 5A U.K. PLUG V230-240
1013.E025KT-R00	CONDENSATORE 25MF 250-400-425Vac 50/60Hz CAPACITOR 25µF
2311.0003-951KIT	KIT COPERCHIO CROMO MIGNON ME TOP COVER KIT (CHROME)
2311.0003GKIT	KIT COPERCHIO NERO MIGNON ME TOP COVER KIT (BLACK)
2311.0026KIT-ORO	KIT SCUDETTO EUREKA G.ORO MIGNON SILENT EUREKA ORO LOGO KIT w/ SCREW
2311.1120-951	FRONTALINO PL CROMO x MIGNON v.1708 FRONT COVER (CHROME)



UNIQUE GRINDING
SOLUTIONS

Listino ricambi / Spare Parts Price List

MIGNON SINGLE DOSE

2313.1120v1909G	FRONTALINO PL GOFFRATA x ME/MP v.1909 FRONT COVER (BLACK)
2315.0005A0R03-XXL	PORTAMACINE SUP dia.65mm ME XL / SD R03 UPPER BURR HOLDER (65mm)
2315.0084A0R00-XXL	SCIVOLO MIGNON XL/TURBO/STARK METALLIC SLIDE
2316.0007A0R01-XXM	GRUPPO BOCCHETTONE MIGNON SD MIGNON SINGLE DOSE NOZZLE
2316.0035A0R02-XXG	GUARNIZIONE CAMPANA X MIGNON SINGLE R02 BEAN HOPPER SEAL
2316.0070A2R00-1KIT	KIT 1 SOFFIETTO BLOW UP SD 2 ONDE BLOW UP FOR SINGLE DOSE HOPPER
2316.0183A0R00-XXM	KIT DISCO ACCIAIO AISI 304 LAV. SD SINGLE DOSE CUP-DISC KIT
2316.0530EUR00-1KIT	KIT 1 BICCHIERINI EUREKA INOX LUX SINGLE DOSE DOSING CUP
E00236-031031-R00	ET. POMELLO MIGNON SD GIGLIO ORO MIGNON ORO "GIGLIO" KNOB LABEL
E00237-009103-R00	ET. REG. POMELLO MIGNON SINGLE DOSE MIGNON KNOB ADJUSTMENT LABEL
MAC64ITA-DI CP	COPPIA MACINE PIANE mm.65 DIAMOND HS FLAT BURRS mm65 DIAMOND INSIDE
RIC-BA1.2316-001	RIC. BASE110_SD_C.001 BASE GROUP 110v (BLACK)
RIC-BA1.2316-002	RIC. BASE110_SD_C.101 BASE GROUP 110v (WHITE)
RIC-BA1.2316-003	RIC. BASE110_SD_C.951 BASE GROUP 110v (CHROME)
RIC-BA2.2316-001	RIC. BASE220_SD_C.001 BASE GROUP 220v (BLACK)
RIC-BA2.2316-002	RIC. BASE220_SD_C.101 BASE GROUP 220v (WHITE)
RIC-BA2.2316-003	RIC. BASE220_SD_C.951 BASE GROUP 220v (CHROME)
RIC-BLG.2316-001	RIC. SUPP BICCH_SD_ROVERE WOODEN BASE FOR SD DOSING CUP
RIC-CAM.2316-001	RIC. CAMPANA_SD_BASSA TRASP SINGLE DOSE HOPPER



UNIQUE GRINDING
SOLUTIONS

Listino ricambi / Spare Parts Price List

MIGNON SINGLE DOSE

RIC-CAV.2316-001	RIC. CAVI_SD_STD SINGLE DOSE CABLE KIT
RIC-CCA.2316-001	RIC. COP CAMP_SD_ROVERE WOODEN LID FOR SD HOPPER
RIC-FLA.2316-001	RIC. FLAP_SD_STD SINGLE DOSE FLAP KIT
RIC-GBO.2316-001	RIC. GR.BOCCHETTONE_SD_STD COFFEE EXIT SLIDE GROUP MIGNON
RIC-PBL.2316-001	RIC. PIEDINI SUPP_SD_STD BUMPERS FOR WOODEN BASE
RIC-PIE.2316-001	RIC. PIEDINI_SD_STD BASE FEET
RIC-POM.2316-001	RIC. POMELLO_SD_STD SINGLE DOSE KNOB KIT
RIC-VIT.2316-001	RIC. VITI_SD_STD SINGLE DOSE SCREWS KIT

- Gli articoli evidenziati sono i ricambi delle parti soggette a maggiore usura, e quindi il loro approvvigionamento è particolarmente consigliato
- Tutti i prezzi si intendono IVA esclusa
- La merce viene venduta franco fabbrica a Sesto Fiorentino (FI) e viaggia a rischio del committente.

- The items highlighted are the spare parts of the pieces subject to greater wear, and therefore their supply is particularly recommended
- All prices are intended VAT excluded
- Goods are sold ex works from Sesto Fiorentino (FI), Italy and travel at the risk of the Customer