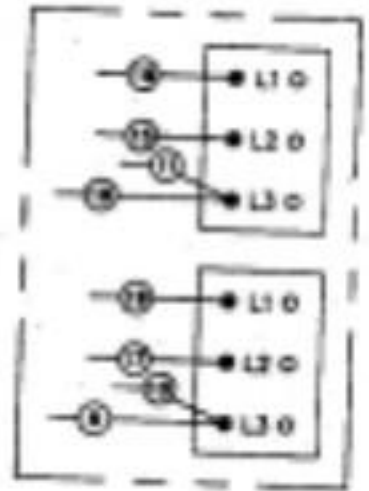
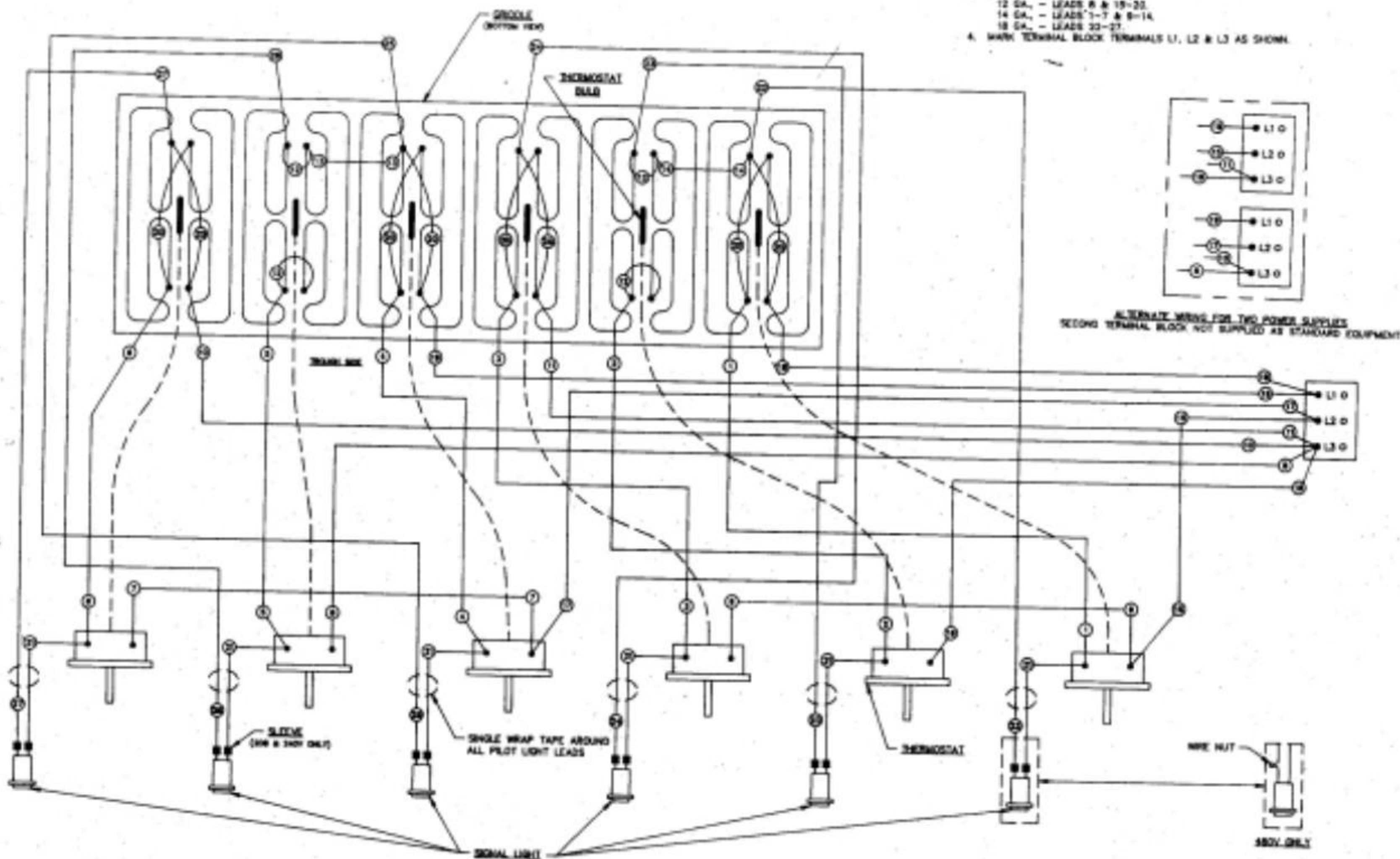
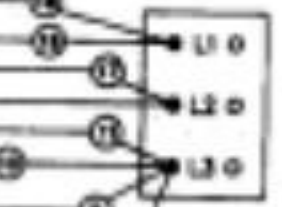
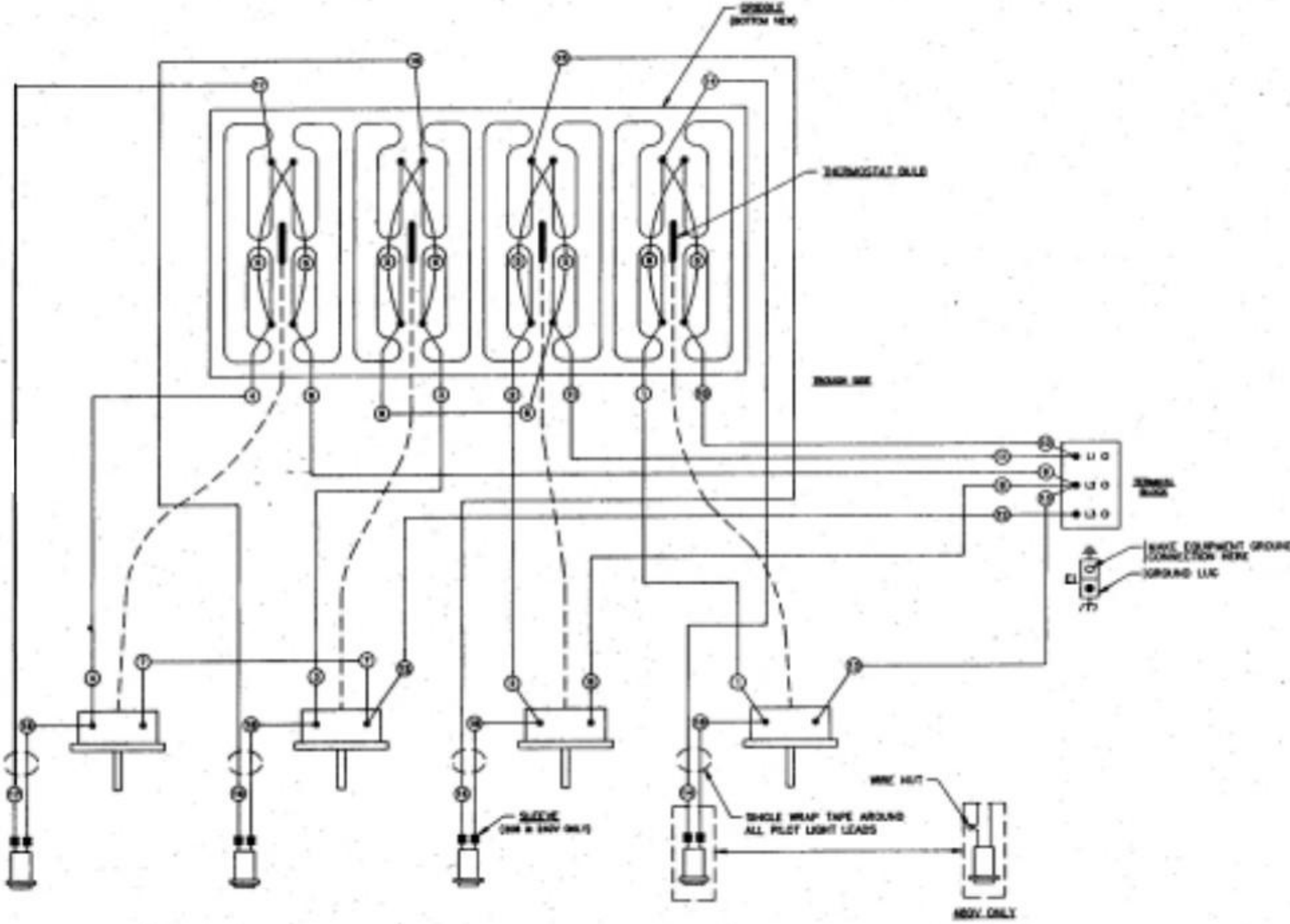


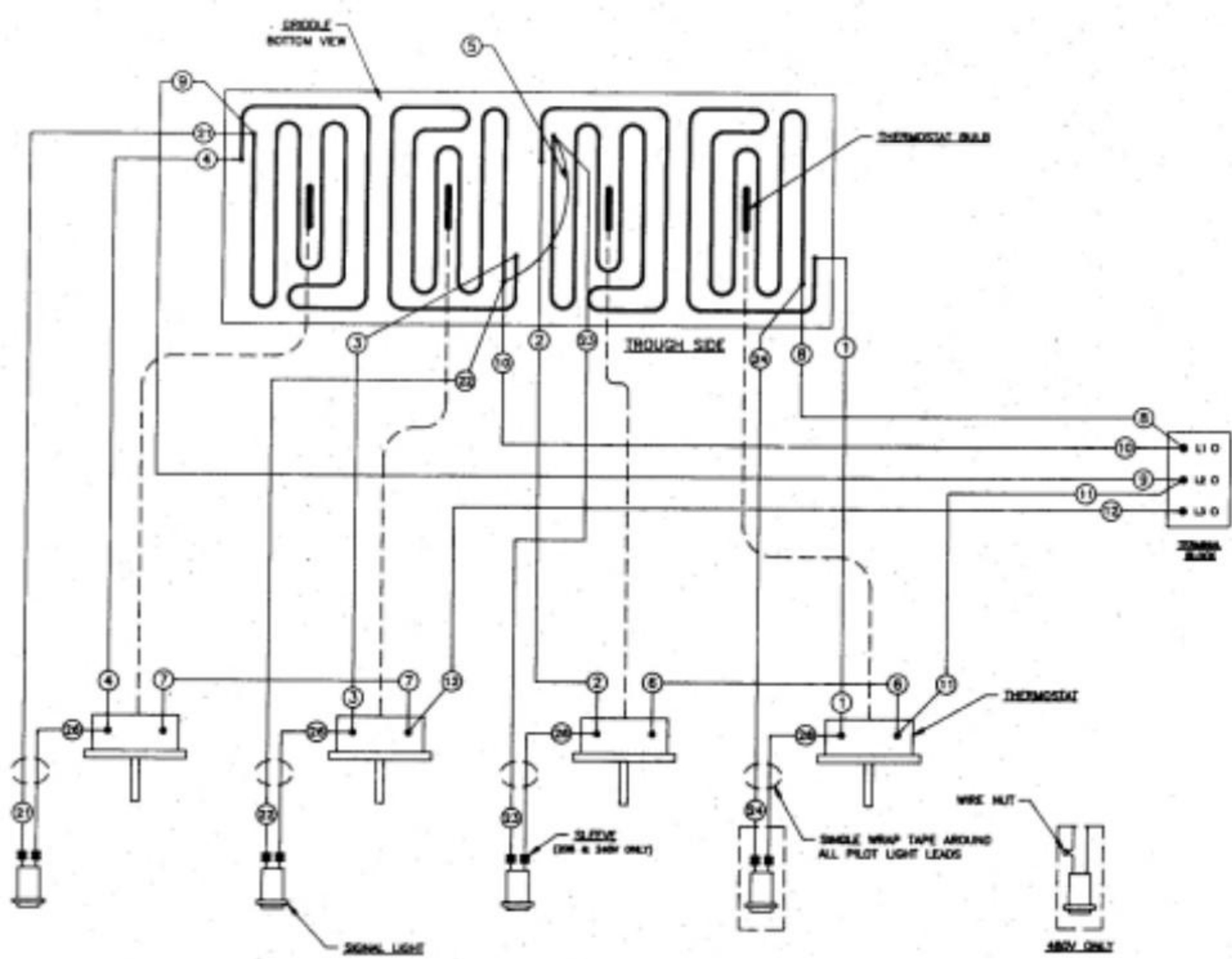
- NOTES (UNLESS OTHERWISE SPECIFIED)
1. WIRING SHOWN 3 PHASE ONLY
  2. 208-240V WIRING TO BE:  
12 GA. - LEADS 1-20  
18 GA. - LEADS 21-27
  3. 480V WIRING TO BE:  
12 GA. - LEADS 8 & 19-23  
14 GA. - LEADS 7-7 & 9-14  
18 GA. - LEADS 23-27
  4. MARK TERMINAL BLOCK TERMINALS L1, L2 & L3 AS SHOWN



ALTERNATE WIRING FOR TWO POWER SUPPLIES  
SECOND TERMINAL BLOCK NOT SUPPLIED AS STANDARD EQUIPMENT







SPOOL  
BOTTOM VIEW

THERMOSTAT BAR

THROUGH SIDE

THERMOSTAT

WIRE NUT

SIGNAL LIGHT

SLAVE  
(20W & 30W ONLY)

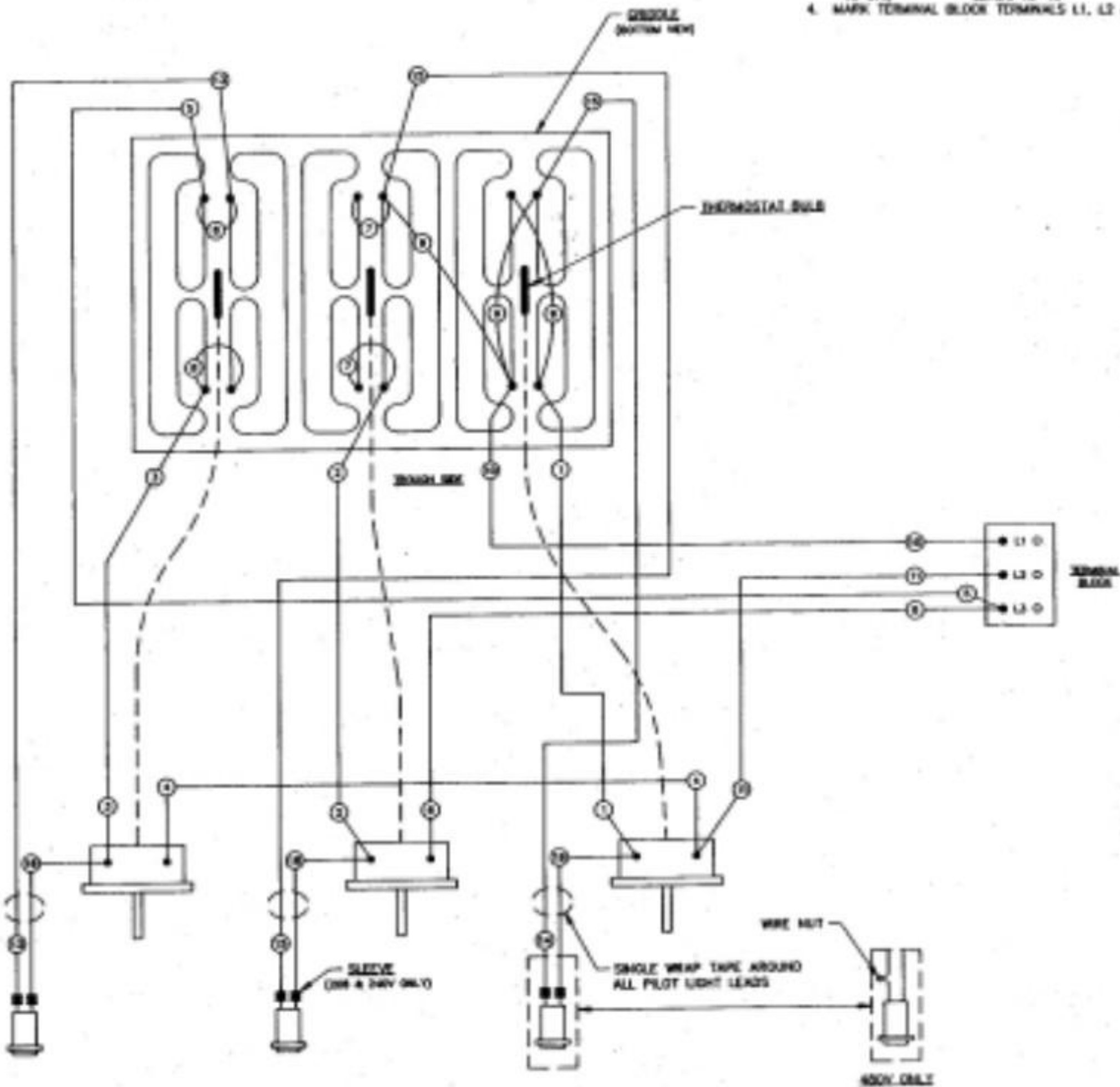
SINGLE WRAP TAPE AROUND  
ALL PILOT LIGHT LEADS

180V ONLY

L10  
L0  
L0

NOTES: (UNLESS OTHERWISE SPECIFIED)

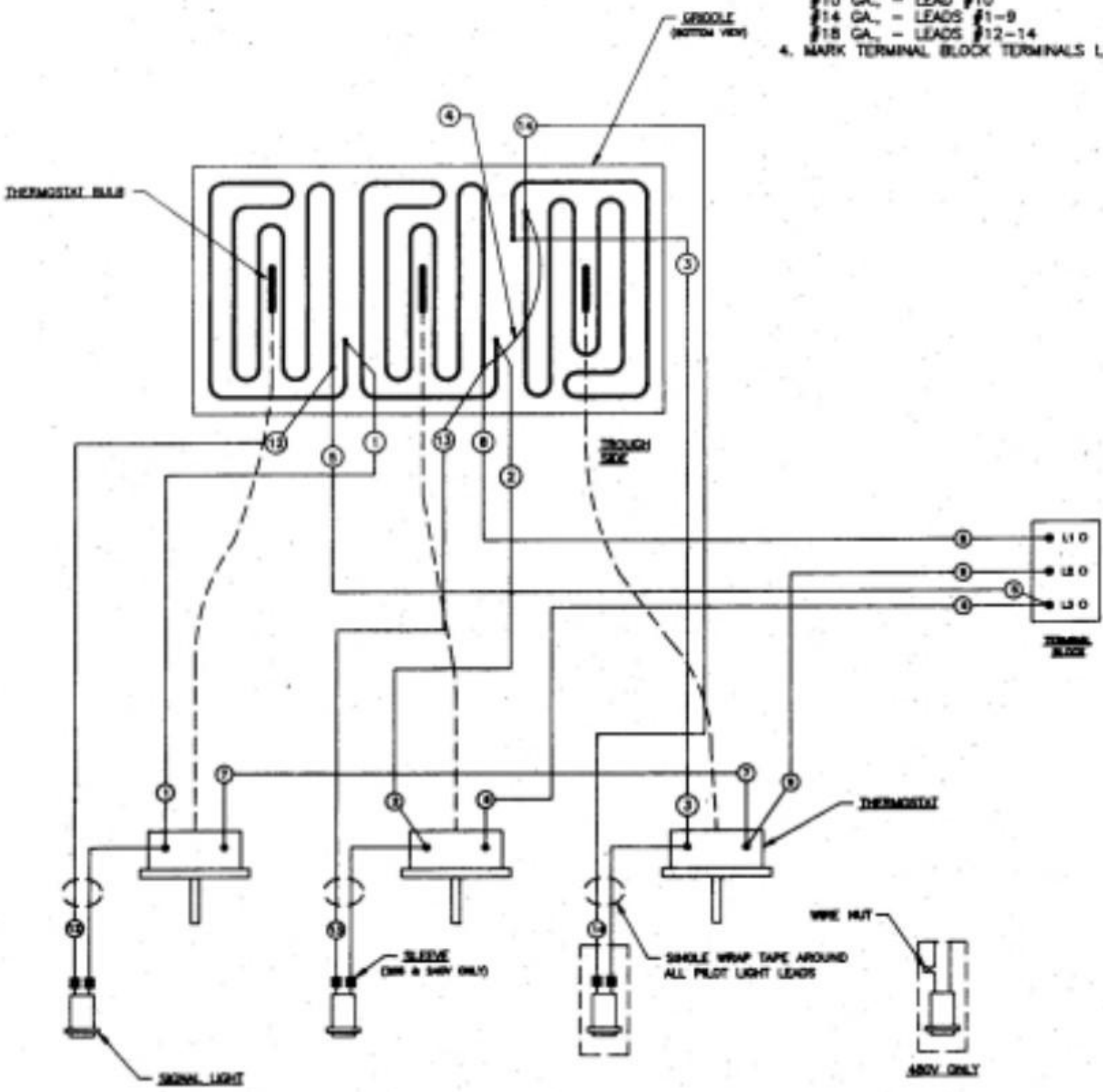
1. WIRING SHOWN 3 PHASE FOR SINGLE PHASE WIRING MOVE LEAD #3 TO TERMINAL "L1" AND LEAD #5 TO TERMINAL "L2".
2. 208-240V WIRING TO BE:  
 10 GA. \_\_\_\_\_ LEADS 1-11  
 18 GA. \_\_\_\_\_ LEADS 13-18
3. 480V WIRING TO BE:  
 14 GA. \_\_\_\_\_ LEADS 1-9  
 12 GA. \_\_\_\_\_ LEADS 10 & 11  
 18 GA. \_\_\_\_\_ LEADS 13-15
4. MARK TERMINAL BLOCK TERMINALS L1, L2 & L3 AS SHOWN.

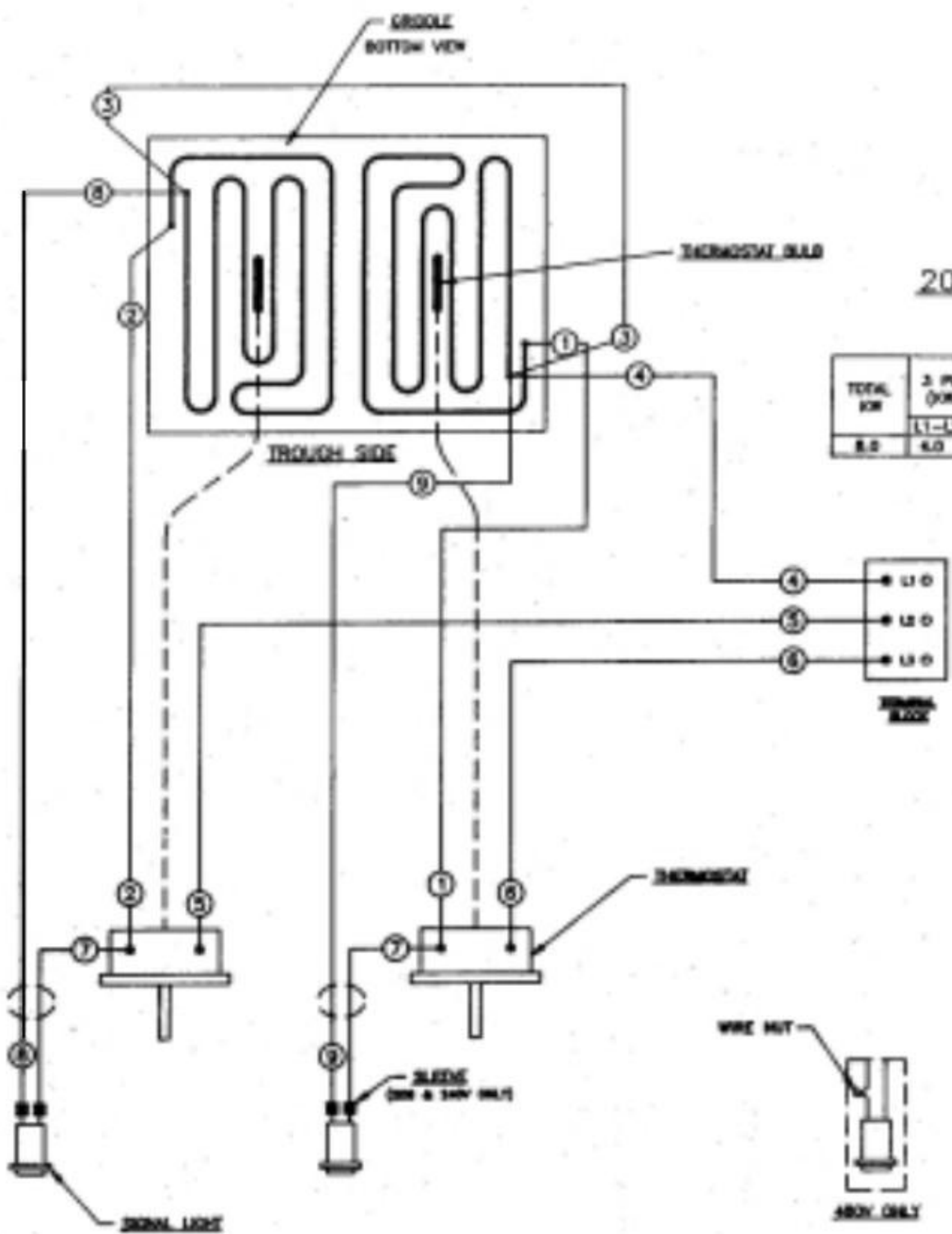


**NOTES:**

1. WIRING SHOWN FOR 3 PHASE, FOR SINGLE PHASE WIRING MOVE LEAD #5 TO TERMINAL L1 AND MOVE LEAD #6 TO TERMINAL L2.
2. 208-240 VOLT WIRING TO BE:  
 #12 GA. - LEADS #1-5  
 #12 GA. - LEADS #6 & 7  
 #10 GA. - LEADS #8-10  
 #18 GA. - LEADS #11-14
3. 480 VOLT WIRING TO BE:  
 #10 GA. - LEAD #10  
 #14 GA. - LEADS #1-9  
 #18 GA. - LEADS #12-14
4. MARK TERMINAL BLOCK TERMINALS L1, L2 & L3 AS SHOWN

View:





208/240/480 V.A.C. - 1 & 3 PHASE

TOTAL KW	3 PHASE LOADING (KW PER PHASE)			NOMINAL AMPS PER LINE WIRE											
				3 PHASE						1 PHASE					
				208V			240V			480V			208V	240V	480V
L1-L2	L2-L3	L1-L3	L1	L2	L3	L1	L2	L3	L1	L2	L3				
8.0	6.0	6.0	6.0	33.3	16.7	16.7	28.8	14.4	14.4	14.4	7.22	7.22	28.8	33.3	16.7

**NOTES:**

- LEAD INFORMATION FOR 480 VOLT:  
 #16 GA. - LEADS #1-3, 5 & 6  
 #14 GA. - LEAD #4  
 #18 GA. - LEADS #7-9
- LEAD INFORMATION FOR 208/240 VOLT:  
 #12 GA. - LEADS #1-3  
 #10 GA. - LEAD #4  
 #12 GA. - LEADS #5 & 6
- PHASE WIRING:  
 FOR ONE PHASE - CONNECT WIRES #5 AND #6 TO ONE FIELD LINE WIRE AND WIRE #4 TO THE OTHER FIELD LINE WIRE.  
 FOR THREE PHASE - CONNECT WIRE #4 TO "L1" FIELD LINE WIRE, WIRE #5 TO "L2" FIELD LINE WIRE AND WIRE #6 TO "L3" FIELD LINE WIRE.
- MARK TERMINAL BLOCK TERMINALS L1, L2 AND L3 AS SHOWN.