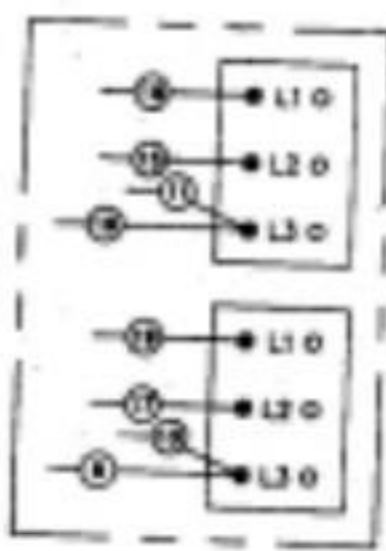
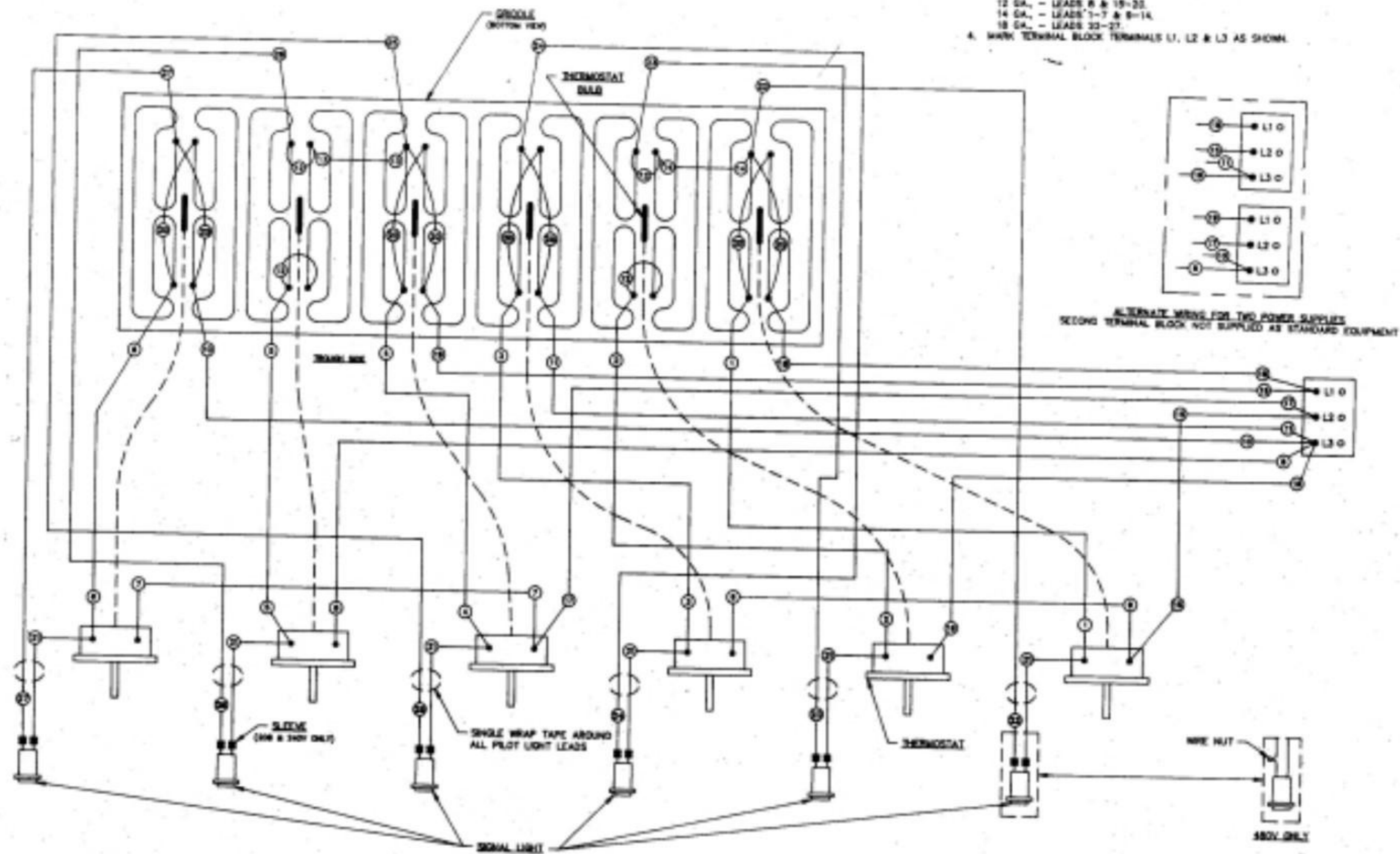
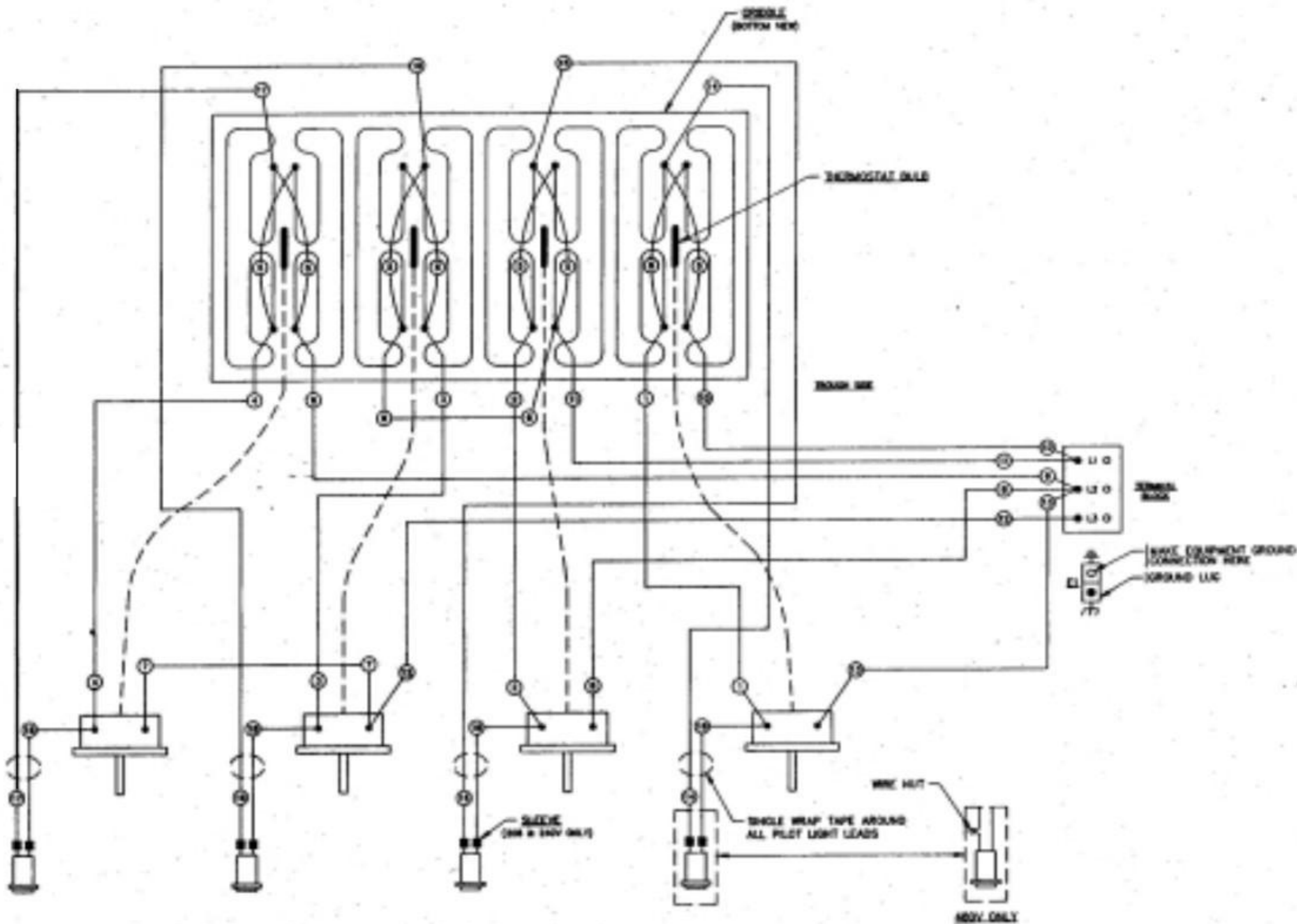


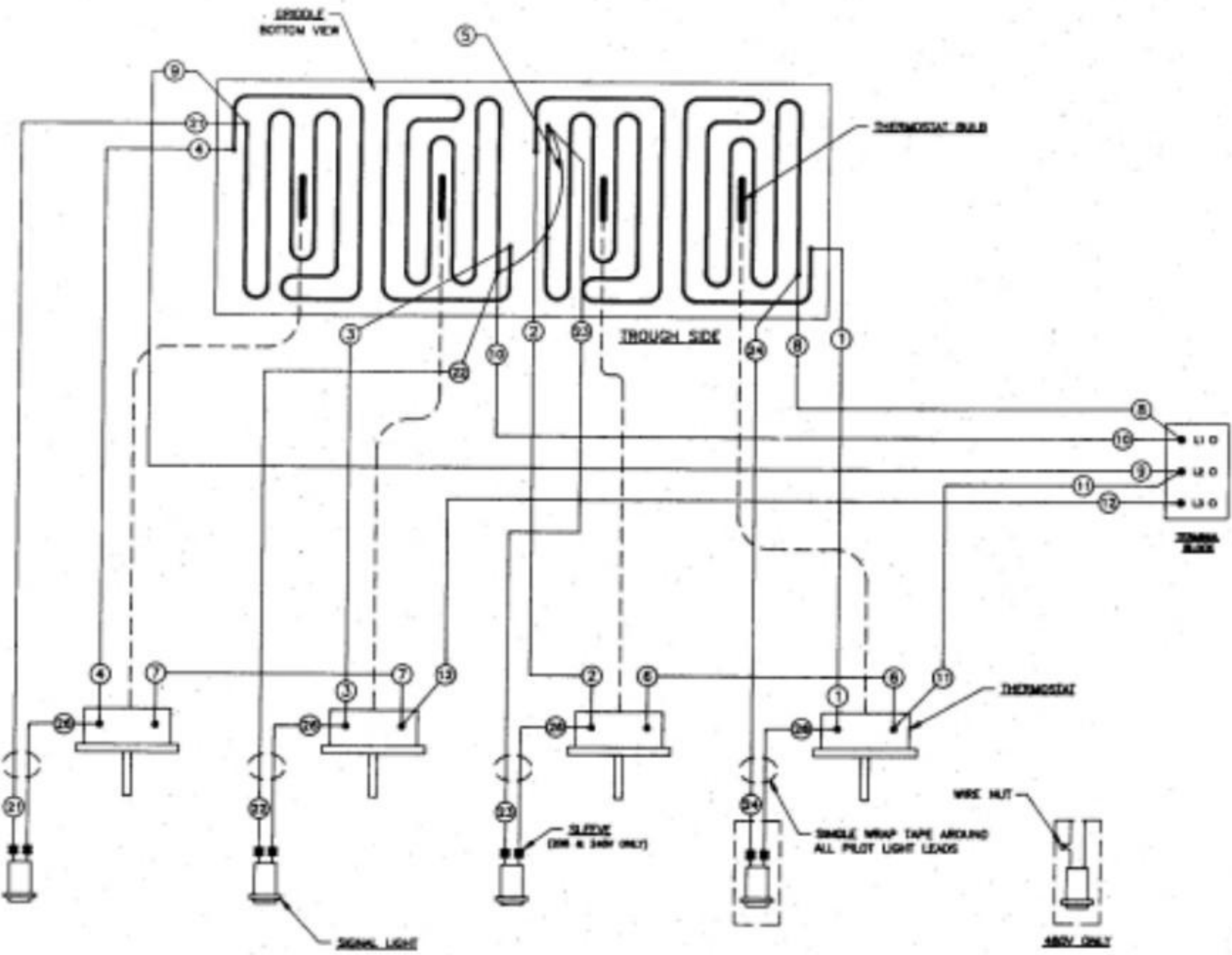
- NOTES (UNLESS OTHERWISE SPECIFIED):
1. WIRING SHOWN 3 PHASE ONLY
 2. 208-240V WIRING TO BE:
12 GA. - LEADS 1-20
18 GA. - LEADS 21-27
 3. 480V WIRING TO BE:
12 GA. - LEADS 8 & 19-20
14 GA. - LEADS 1-7 & 9-14
18 GA. - LEADS 23-27
 4. WIRE TERMINAL BLOCK TERMINALS L1, L2 & L3 AS SHOWN.



ALTERNATE WIRING FOR TWO POWER SUPPLIES
SECOND TERMINAL BLOCK NOT SUPPLIED AS STANDARD EQUIPMENT

180V ONLY





SPINDLE
BOTTOM VIEW

THERMOSTAT BALL

THROUGH SIDE

Terminal Block
L10
L20
L30

THERMOSTAT

WIRE NUT

SINGLE WRAP TAPE AROUND
ALL PILOT LIGHT LEADS

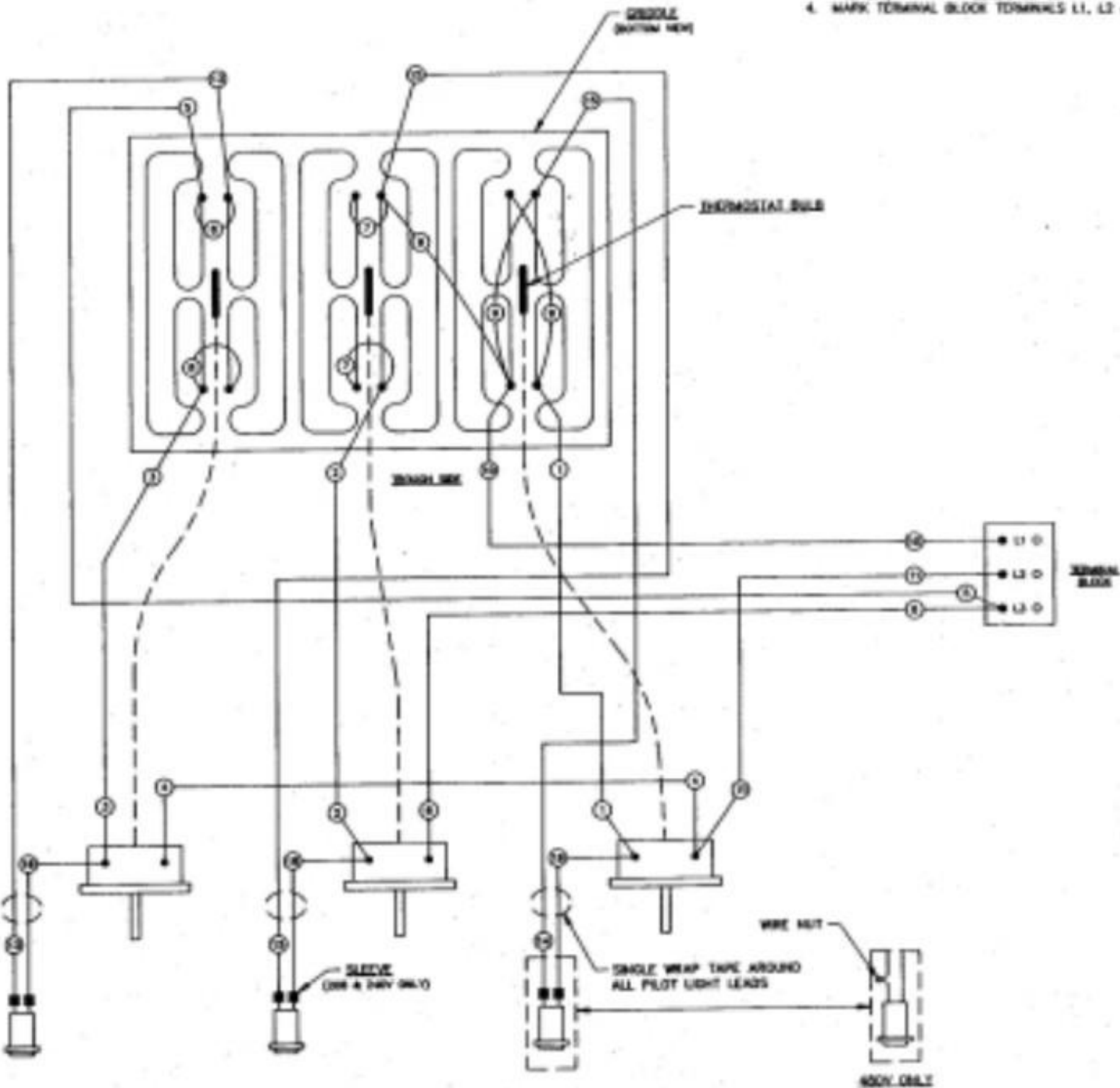
SLEEVE
(2MM & 3MM ONLY)

SIGNAL LIGHT

480V ONLY

NOTES (UNLESS OTHERWISE SPECIFIED)

1. WIRING SHOWN 3 PHASE FOR SINGLE PHASE WIRING MOVE LEAD #3 TO TERMINAL "L1" AND LEAD #5 TO TERMINAL "L2".
2. 208-240V WIRING TO BE:
 12 GA. ——— LEADS 1-11
 18 GA. ——— LEADS 12-18
3. 480V WIRING TO BE:
 14 GA. ——— LEADS 1-9
 12 GA. ——— LEADS 10 & 11
 18 GA. ——— LEADS 12-15
4. MARK TERMINAL BLOCK TERMINALS L1, L2 & L3 AS SHOWN.



NOTES:

1. WIRING SHOWN FOR 3 PHASE, FOR SINGLE PHASE WIRING MOVE LEAD #5 TO TERMINAL L1 AND MOVE LEAD #8 TO TERMINAL L2.

View:

2. 208-240 VOLT WIRING TO BE:

#12 GA. - LEADS #1-5

#12 GA. - LEADS #6 & 7

#10 GA. - LEADS #8-10

#18 GA. - LEADS #11-14

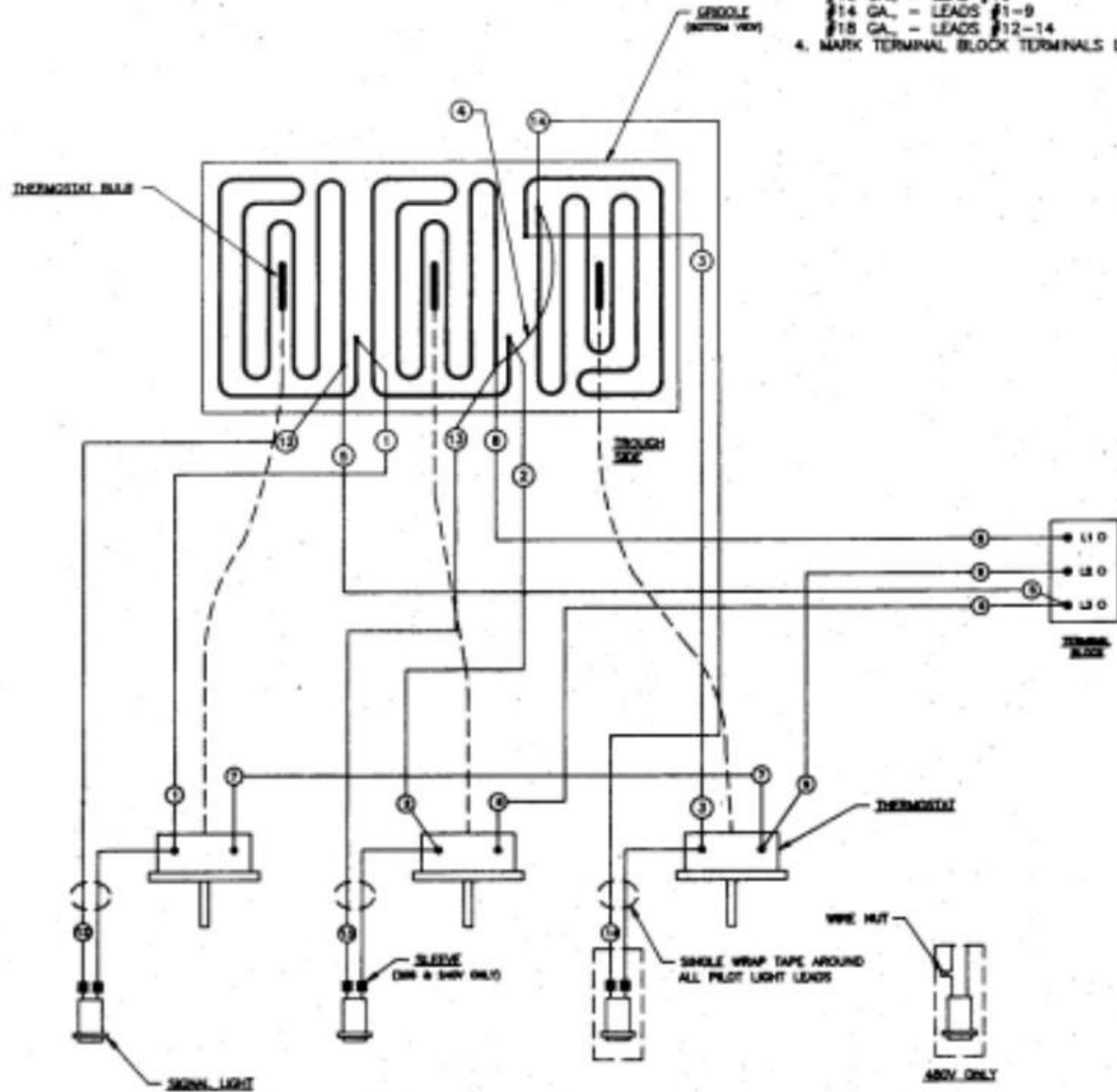
3. 480 VOLT WIRING TO BE:

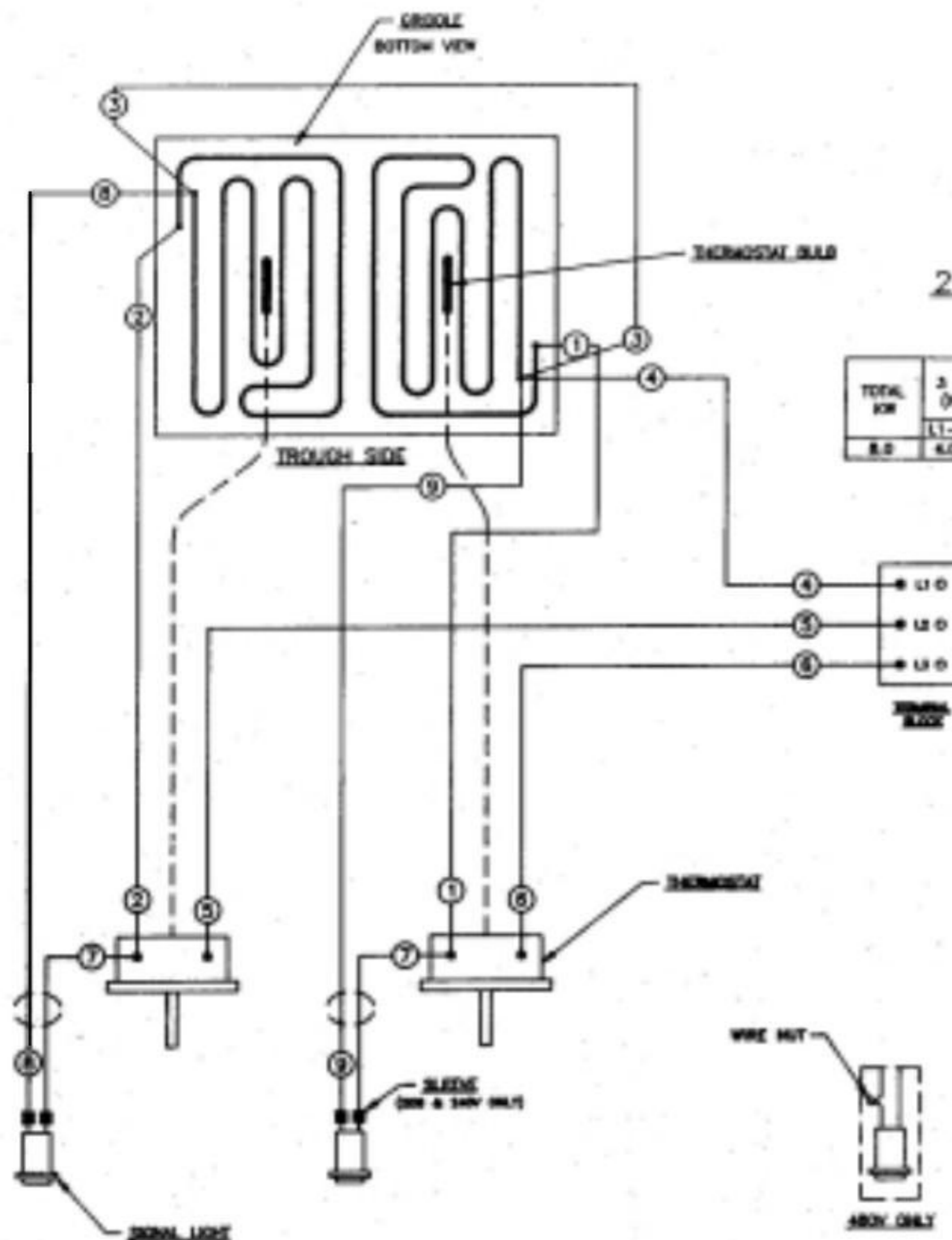
#10 GA. - LEAD #10

#14 GA. - LEADS #1-9

#18 GA. - LEADS #12-14

4. MARK TERMINAL BLOCK TERMINALS L1, L2 & L3 AS SHOWN





208/240/480 V.A.C. - 1 & 3 PHASE

TOTAL KW	3 PHASE LOADING (KW PER PHASE)			MINIMAL AMPS PER LINE WIRE												
				208V			240V			480V						
				L1-L2	L2-L3	L1-L3	L1	L2	L3	L1	L2	L3	L1	L2	L3	
8.0	6.0	6.0	6.0	33.3	16.7	16.7	28.9	14.4	14.4	14.4	7.22	7.22	7.22	38.8	33.3	18.7

- NOTES:**
- LEAD INFORMATION FOR 480 VOLT:
 #16 GA. - LEADS #1-3, 5 & 6
 #14 GA. - LEAD #4
 #18 GA. - LEADS #7-9
 - LEAD INFORMATION FOR 208/240 VOLT:
 #12 GA. - LEADS #1-3
 #10 GA. - LEAD #4
 #12 GA. - LEADS #5 & 6
 - PHASE WIRING:
 FOR ONE PHASE - CONNECT WIRES #5 AND #6 TO ONE FIELD LINE WIRE AND WIRE #4 TO THE OTHER FIELD LINE WIRE.
 FOR THREE PHASE - CONNECT WIRE #4 TO "L1" FIELD LINE WIRE, WIRE #5 TO "L2" FIELD LINE WIRE AND WIRE #6 TO "L3" FIELD LINE WIRE.
 - MARK TERMINAL BLOCK TERMINALS L1, L2 AND L3 AS SHOWN.