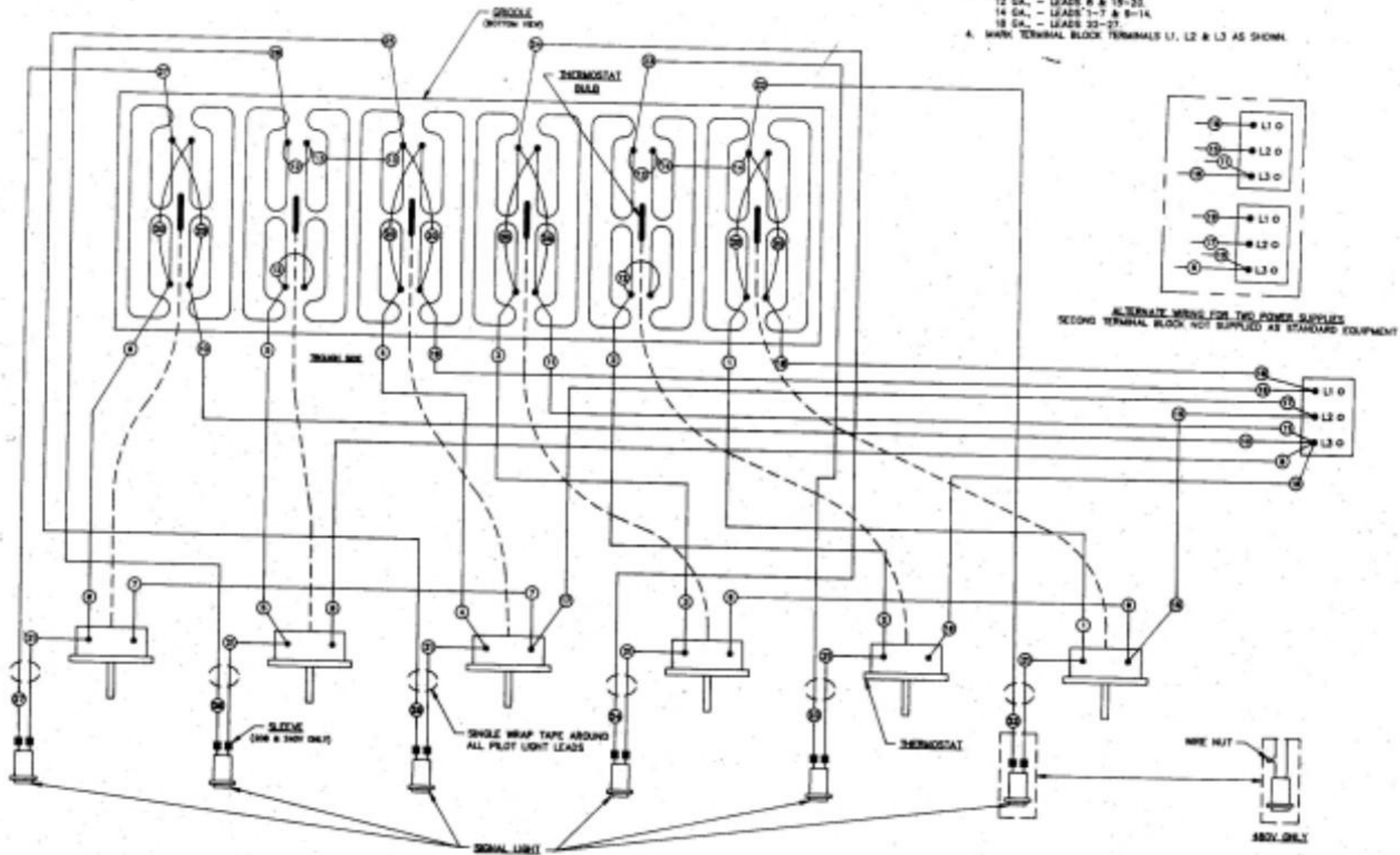


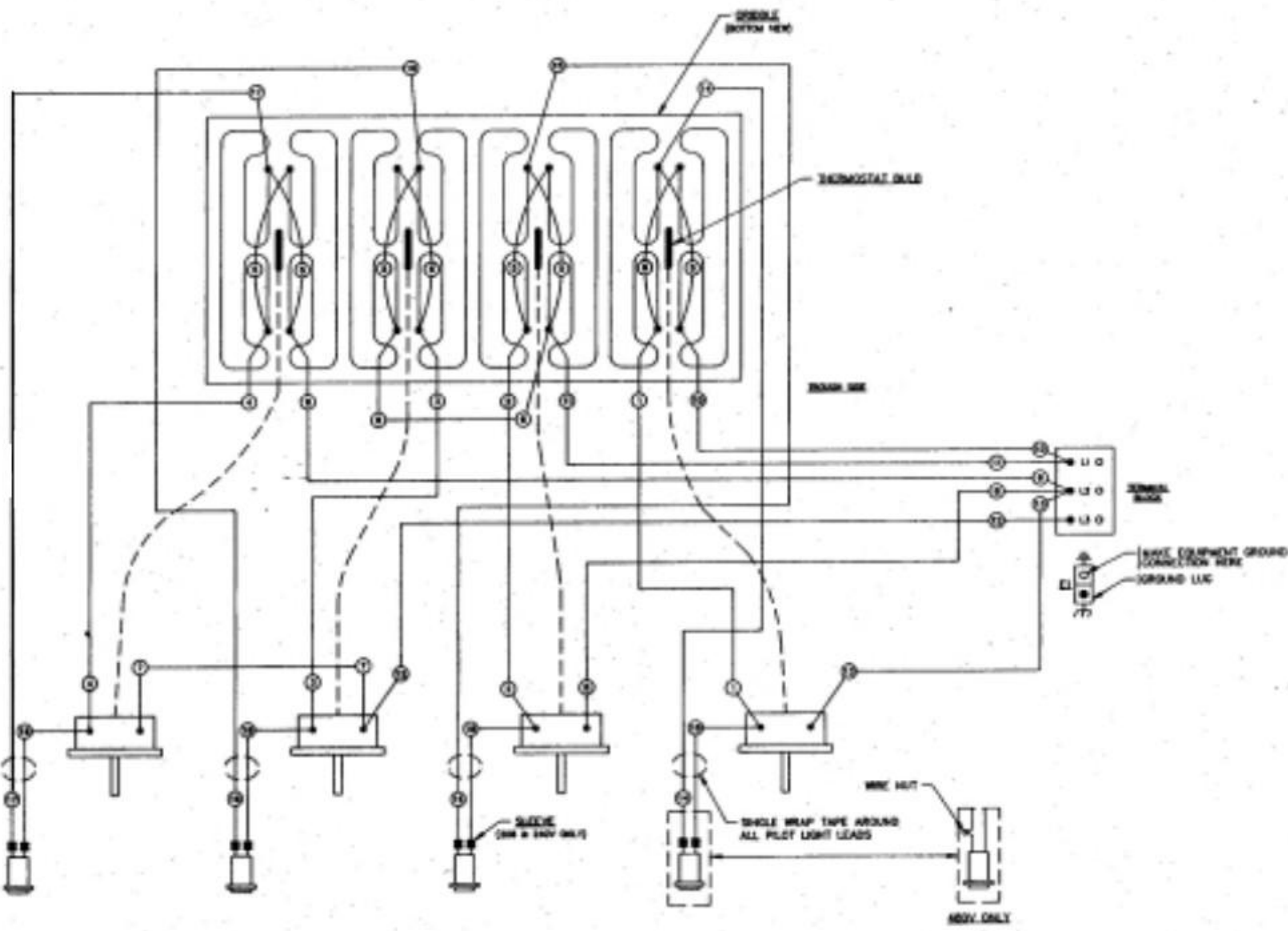
NOTES (UNLESS OTHERWISE SPECIFIED)

1. WIRING SHOWN 3 PHASE ONLY
2. 208-240V WIRING TO BE:
12 GA. - LEADS 1-20
18 GA. - LEADS 21-27
3. 480V WIRING TO BE:
12 GA. - LEADS 8 & 15-20
14 GA. - LEADS 1-7 & 9-14
18 GA. - LEADS 23-27
4. MARK TERMINAL BLOCK TERMINALS L1, L2 & L3 AS SHOWN



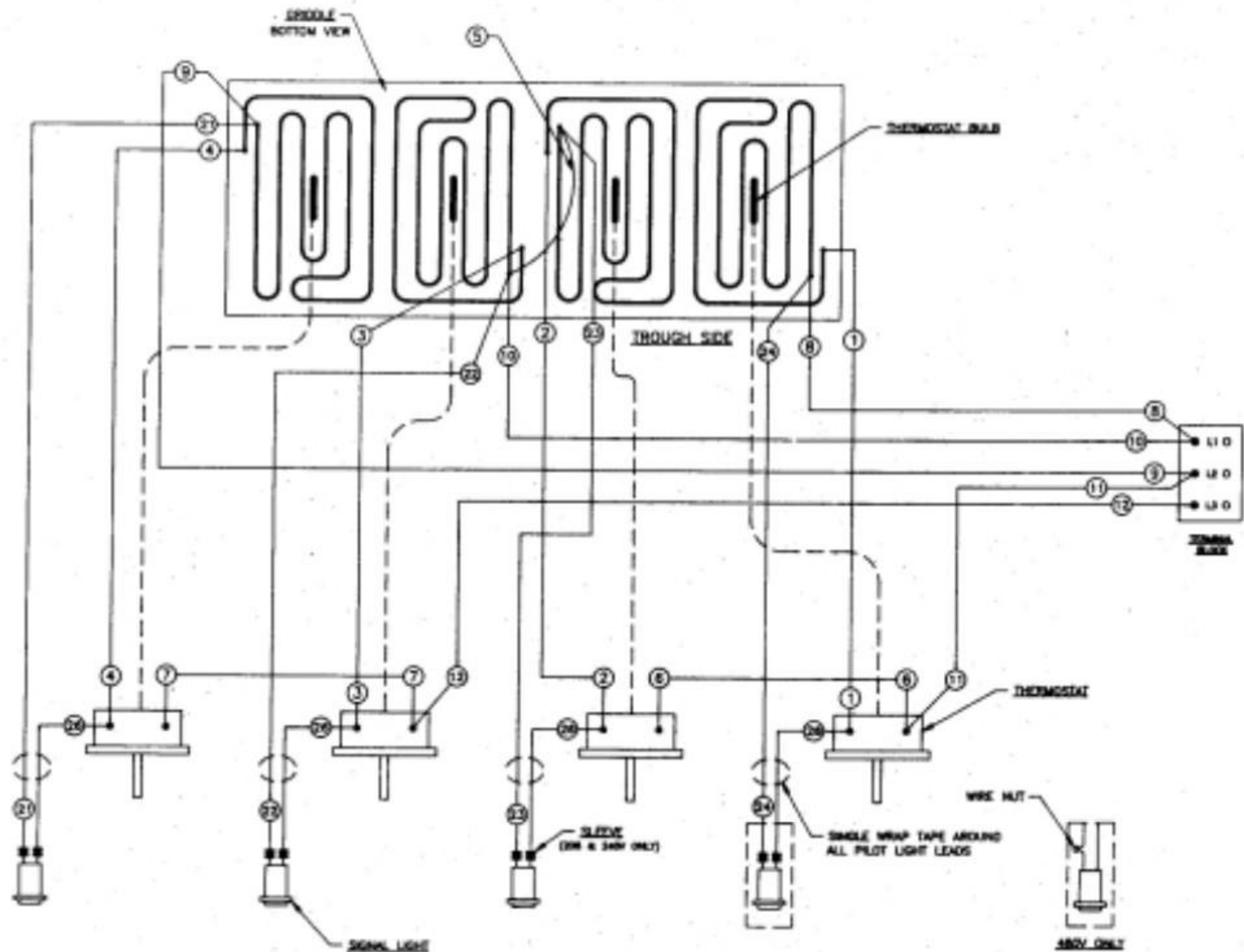
NOTES: (UNLESS OTHERWISE SPECIFIED)

1. WINDING SHOWN 3 PHASE FOR DOUBLE PHASE WINDING WIRE LEAD #13 TO TERMINAL "L1" AND LEAD #9 TO TERMINAL "L1".
2. 200-240V WINDING TO BE:
 10 GA. - LEADS 1-13 & 18
 18 GA. - LEADS 14-16
3. 480V WINDING TO BE:
 10 GA. - LEAD 18
 12 GA. - LEADS 11-13
 14 GA. - LEADS 1-10
 18 GA. - LEADS 14-17
4. MARK TERMINAL BLOCK TERMINALS L1, L2 & L3 AS SHOWN.
5. GROUND LUC FOR C0831-W ONLY.



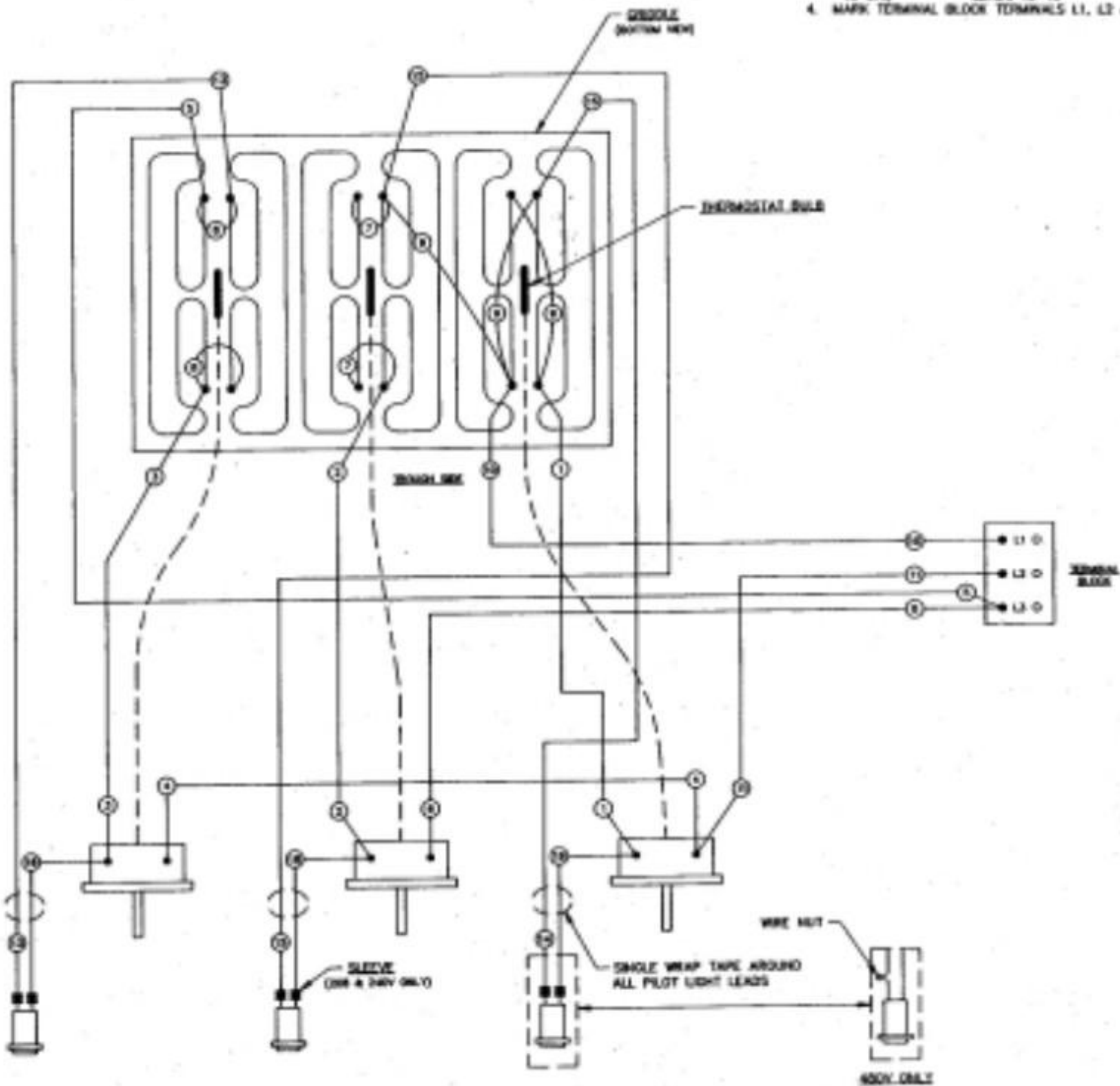
NOTES:

1. WIRING SHOWN IS FOR 3 PHASE. FOR SINGLE PHASE WIRING MOVE LEAD #12 TO TERMINAL "L2" AND MOVE LEAD #9 TO TERMINAL "L1".
2. 208/240 VOLT WIRING TO BE:
 #12 GA. - LEADS #1-5, 8 & 9
 #10 GA. - LEADS #10-12
 #12 GA. - LEADS #6 & 7
 #18 GA. - LEADS #21-24 & 26
3. 480 VOLT WIRING TO BE:
 #14 GA. - LEADS #10-12
 #16 GA. - LEADS #1-9
 #18 GA. - LEADS #21-24
4. MARK TERMINAL BLOCK TERMINALS L1, L2 AND L3 AS SHOWN.



NOTES (UNLESS OTHERWISE SPECIFIED)

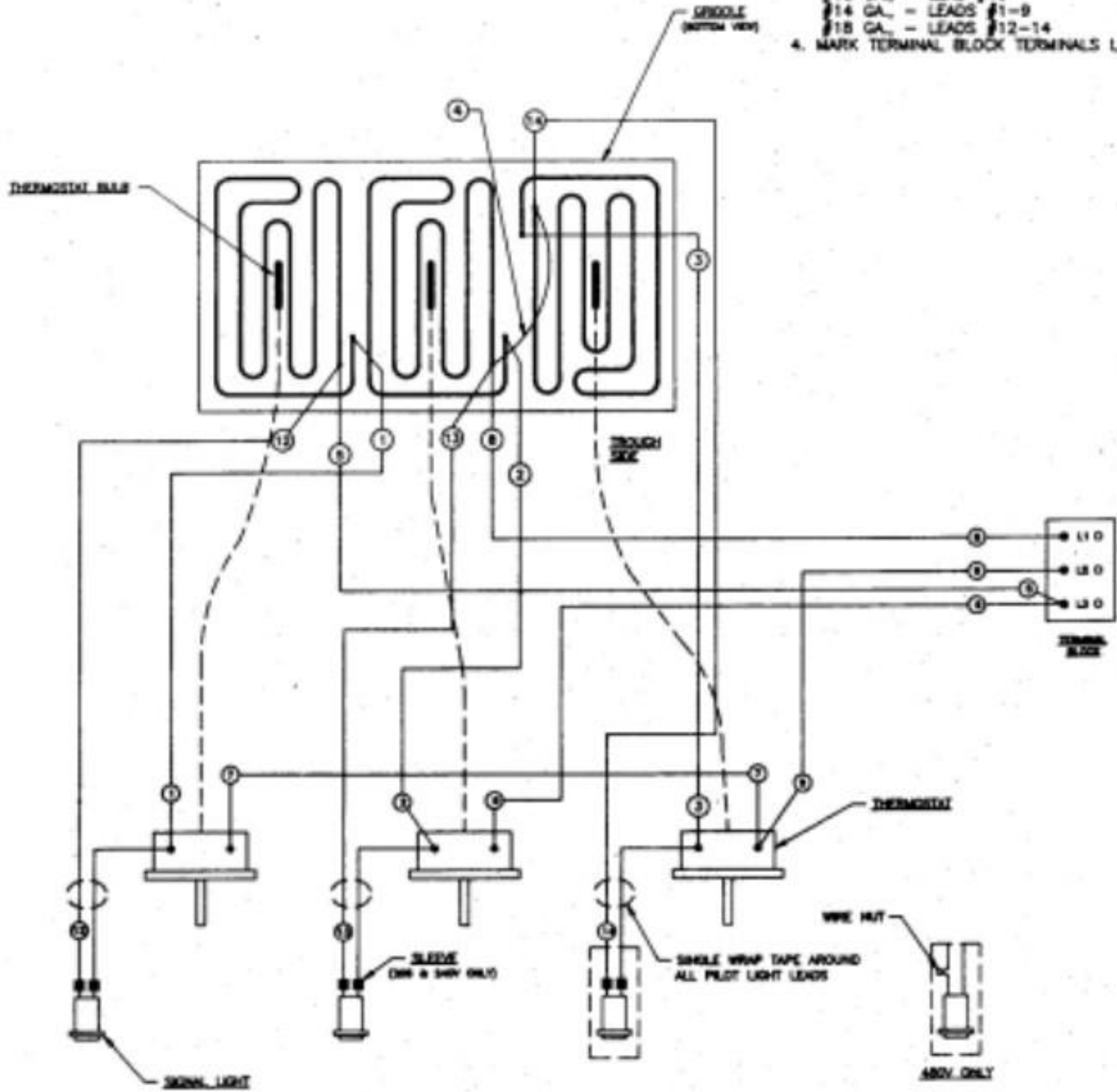
1. WIRING SHOWN 3 PHASE FOR SINGLE PHASE WIRING MOVE LEAD #3 TO TERMINAL "L1" AND LEAD #6 TO TERMINAL "L2".
2. 208-240V WIRING TO BE:
 10 GA. _____ LEADS 1-11
 18 GA. _____ LEADS 13-18
3. 480V WIRING TO BE:
 14 GA. _____ LEADS 1-9
 12 GA. _____ LEADS 10 & 11
 18 GA. _____ LEADS 13-15
4. MARK TERMINAL BLOCK TERMINALS L1, L2 & L3 AS SHOWN.

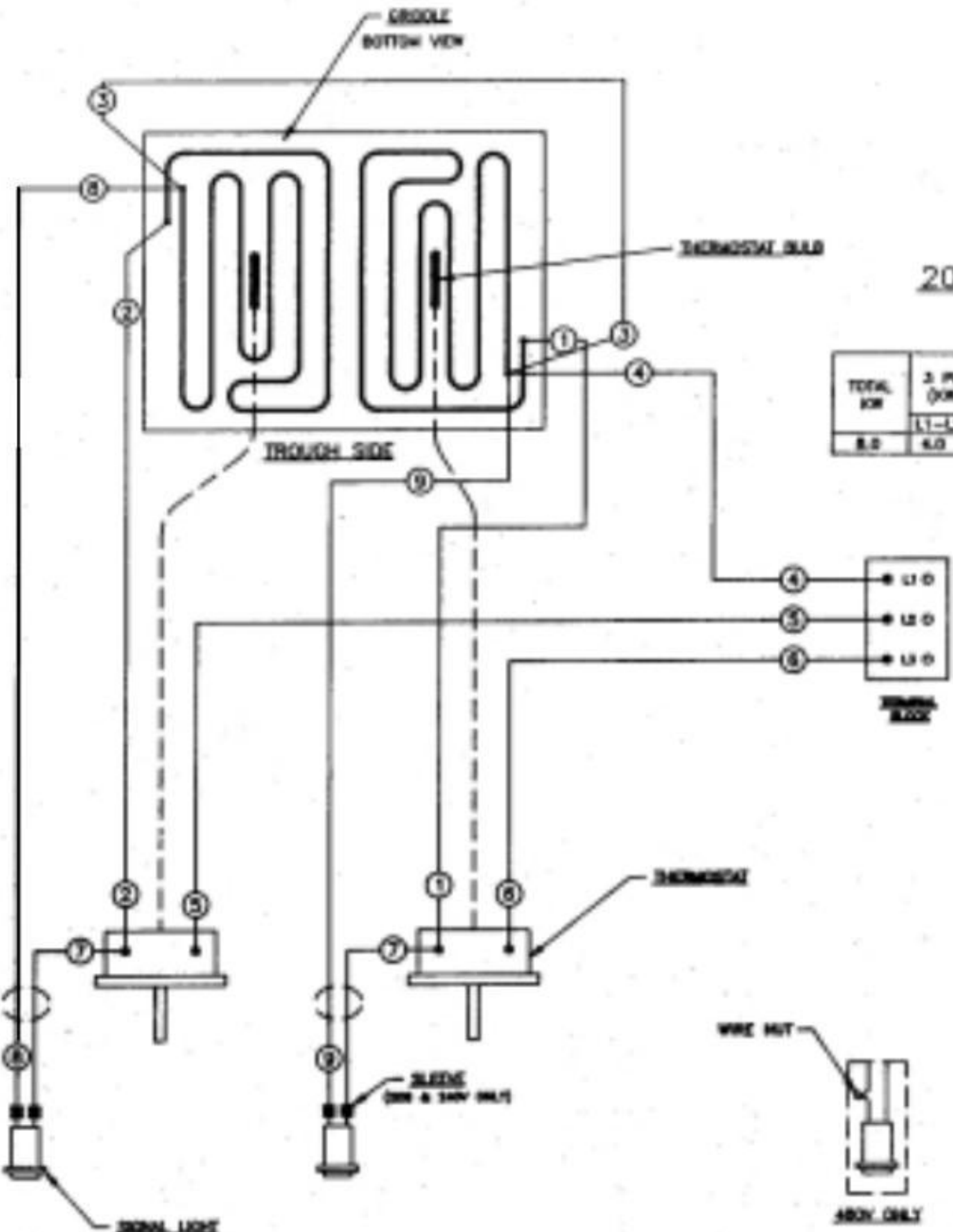


NOTES:

1. WIRING SHOWN FOR 3 PHASE, FOR SINGLE PHASE WIRING MOVE LEAD #5 TO TERMINAL L1 AND MOVE LEAD #8 TO TERMINAL L2.
2. 208-240 VOLT WIRING TO BE:
 #12 GA. - LEADS #1-5
 #12 GA. - LEADS #6 & 7
 #10 GA. - LEADS #8-10
 #18 GA. - LEADS #11-14
3. 480 VOLT WIRING TO BE:
 #10 GA. - LEAD #10
 #14 GA. - LEADS #1-9
 #18 GA. - LEADS #12-14
4. MARK TERMINAL BLOCK TERMINALS L1, L2 & L3 AS SHOWN

FIG. 1





208/240/480 V.A.C. - 1 & 3 PHASE

TOTAL KW	3 PHASE LOADING (KW PER PHASE)			NOMINAL AMPS PER LINE WIRE											
				208V			240V			480V					
	L1-L2	L2-L3	L1-L3	L1	L2	L3	L1	L2	L3	L1	L2	L3	208V	240V	480V
8.0	6.0	6.0	6.0	33.3	16.7	16.7	16.9	14.4	14.4	14.4	7.22	7.22	36.8	33.3	16.7

NOTES:

- LEAD INFORMATION FOR 480 VOLT:
 #16 GA. - LEADS #1-3, 5 & 6
 #14 GA. - LEAD #4
 #18 GA. - LEADS #7-9
- LEAD INFORMATION FOR 208/240 VOLT:
 #12 GA. - LEADS #1-3
 #10 GA. - LEAD #4
 #12 GA. - LEADS #5 & 6
- PHASE WIRING:
 FOR ONE PHASE - CONNECT WIRES #5 AND #6 TO ONE FIELD LINE WIRE AND WIRE #4 TO THE OTHER FIELD LINE WIRE.
 FOR THREE PHASE - CONNECT WIRE #4 TO "L1" FIELD LINE WIRE, WIRE #5 TO "L2" FIELD LINE WIRE AND WIRE #6 TO "L3" FIELD LINE WIRE.
- MARK TERMINAL BLOCK TERMINALS L1, L2 AND L3 AS SHOWN.

480V ONLY