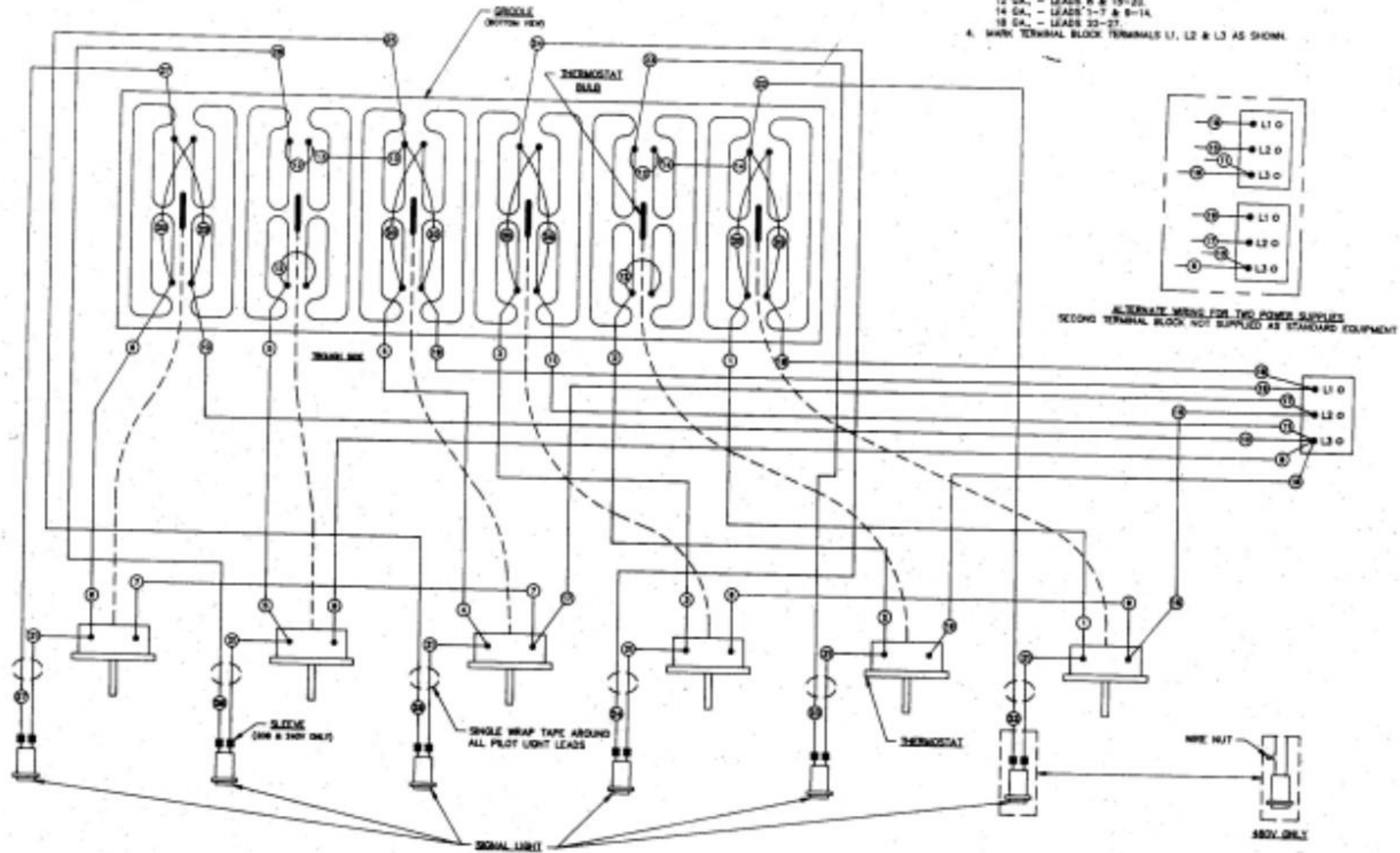


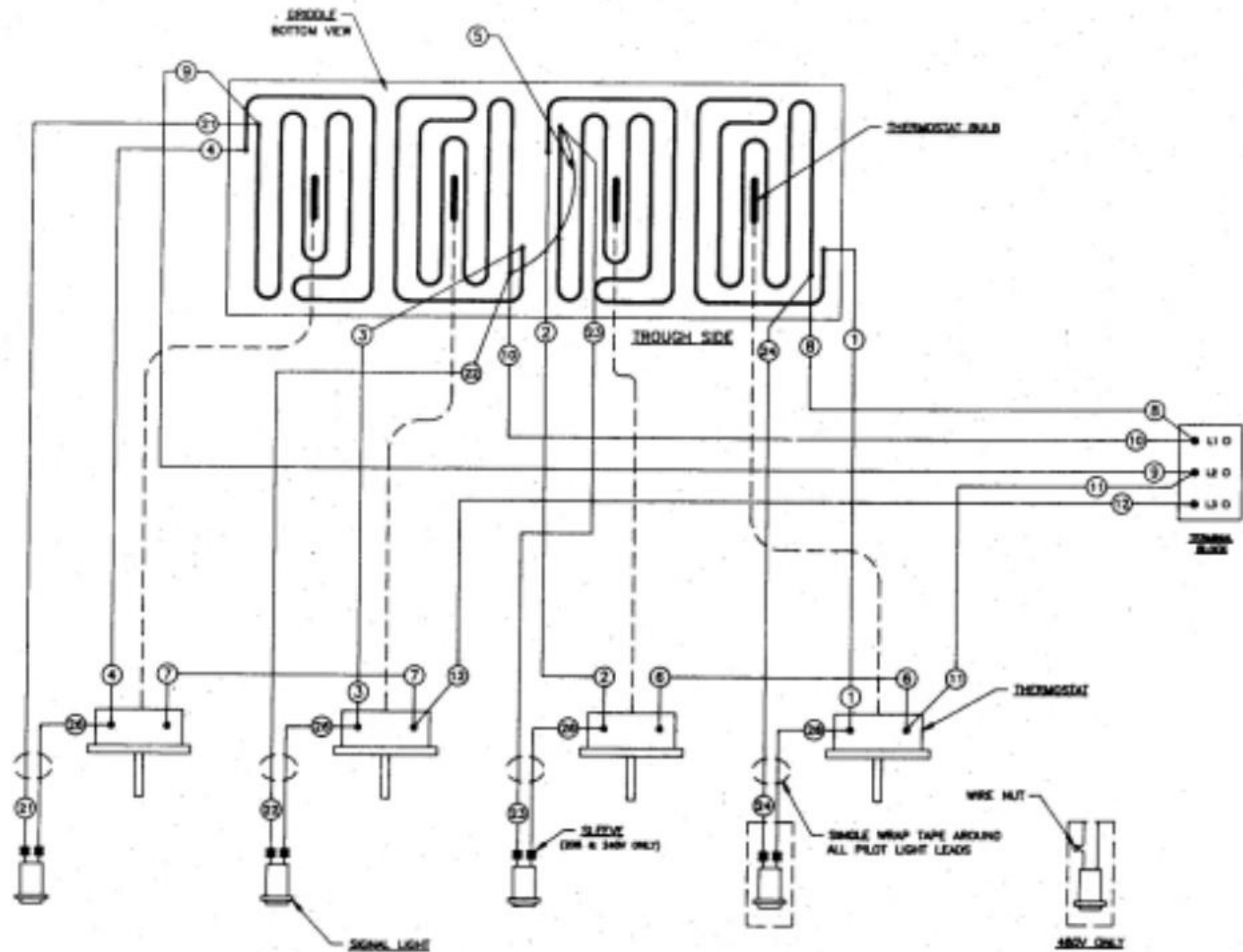
NOTES (UNLESS OTHERWISE SPECIFIED)

1. WIRING SHOWN 3 PHASE ONLY
2. 208-240V WIRING TO BE:
 12 GA. - LEADS 1-20
 18 GA. - LEADS 21-27
3. 480V WIRING TO BE:
 12 GA. - LEADS 8 & 15-20.
 14 GA. - LEADS 1-7 & 9-14.
 18 GA. - LEADS 23-27.
4. MARK TERMINAL BLOCK TERMINALS L1, L2 & L3 AS SHOWN.



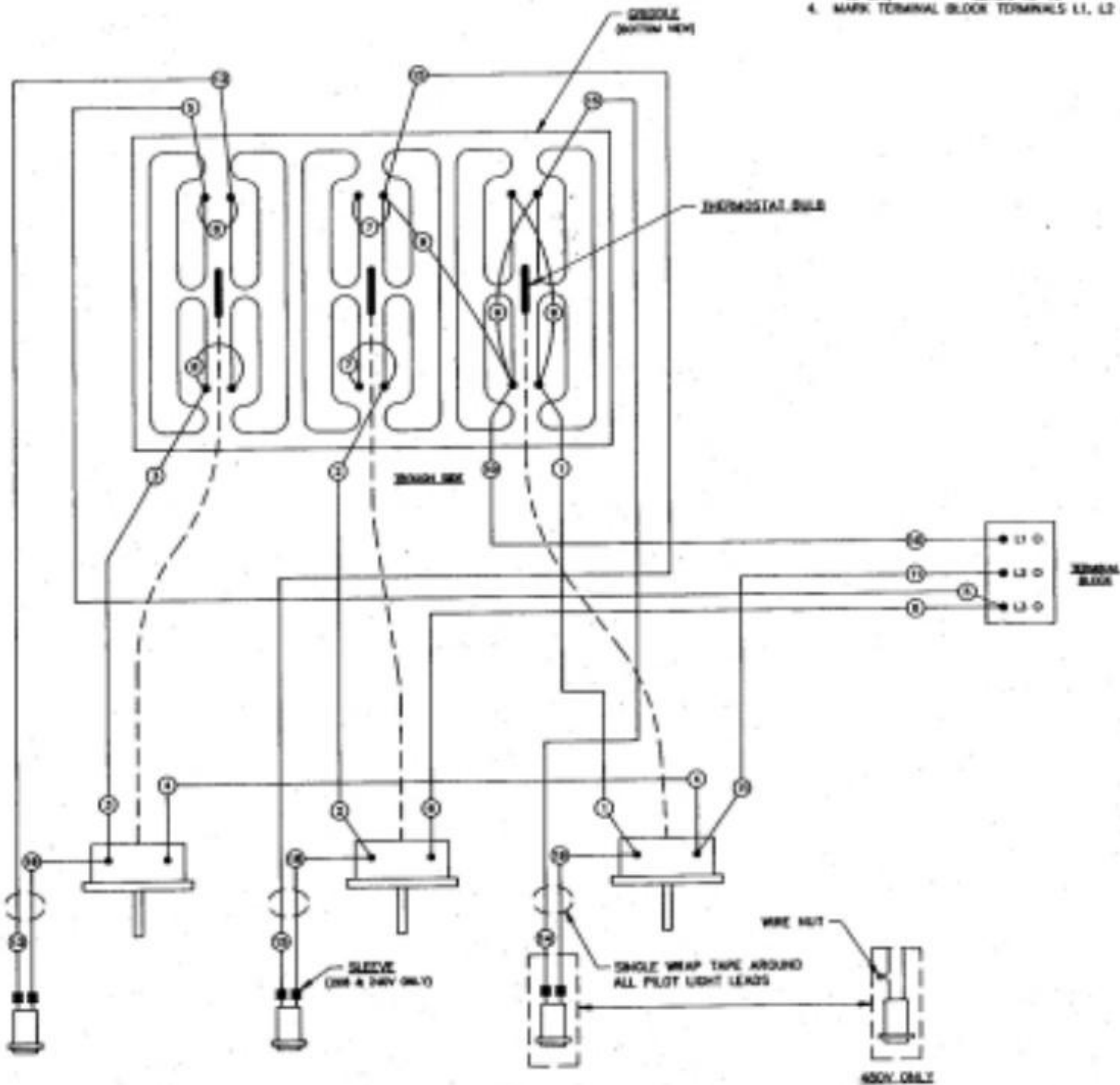
NOTES:

1. WIRING SHOWN IS FOR 3 PHASE. FOR SINGLE PHASE WIRING MOVE LEAD #12 TO TERMINAL "L2" AND MOVE LEAD #9 TO TERMINAL "L1".
2. 208/240 VOLT WIRING TO BE:
 #12 GA. - LEADS #1-5, 8 & 9
 #10 GA. - LEADS #10-12
 #12 GA. - LEADS #8 & 7
 #18 GA. - LEADS #21-24 & 28
3. 480 VOLT WIRING TO BE:
 #14 GA. - LEADS #10-12
 #16 GA. - LEADS #1-9
 #18 GA. - LEADS #21-24
4. MARK TERMINAL BLOCK TERMINALS L1, L2 AND L3 AS SHOWN.



NOTES: (UNLESS OTHERWISE SPECIFIED)

1. WIRING SHOWN 3 PHASE FOR SINGLE PHASE WIRING MOVE LEAD #3 TO TERMINAL "L1" AND LEAD #6 TO TERMINAL "L2".
2. 208-240V WIRING TO BE:
 10 GA. _____ LEADS 1-11
 18 GA. _____ LEADS 13-18
3. 480V WIRING TO BE:
 14 GA. _____ LEADS 1-9
 12 GA. _____ LEADS 10 & 11
 18 GA. _____ LEADS 13-15
4. MARK TERMINAL BLOCK TERMINALS L1, L2 & L3 AS SHOWN.



NOTES:

1. WIRING SHOWN FOR 3 PHASE, FOR SINGLE PHASE WIRING MOVE LEAD #5 TO TERMINAL L1 AND MOVE LEAD #6 TO TERMINAL L2.

View:

2. 208-240 VOLT WIRING TO BE:

#12 GA. - LEADS #1-5

#12 GA. - LEADS #6 & 7

#10 GA. - LEADS #8-10

#18 GA. - LEADS #11-14

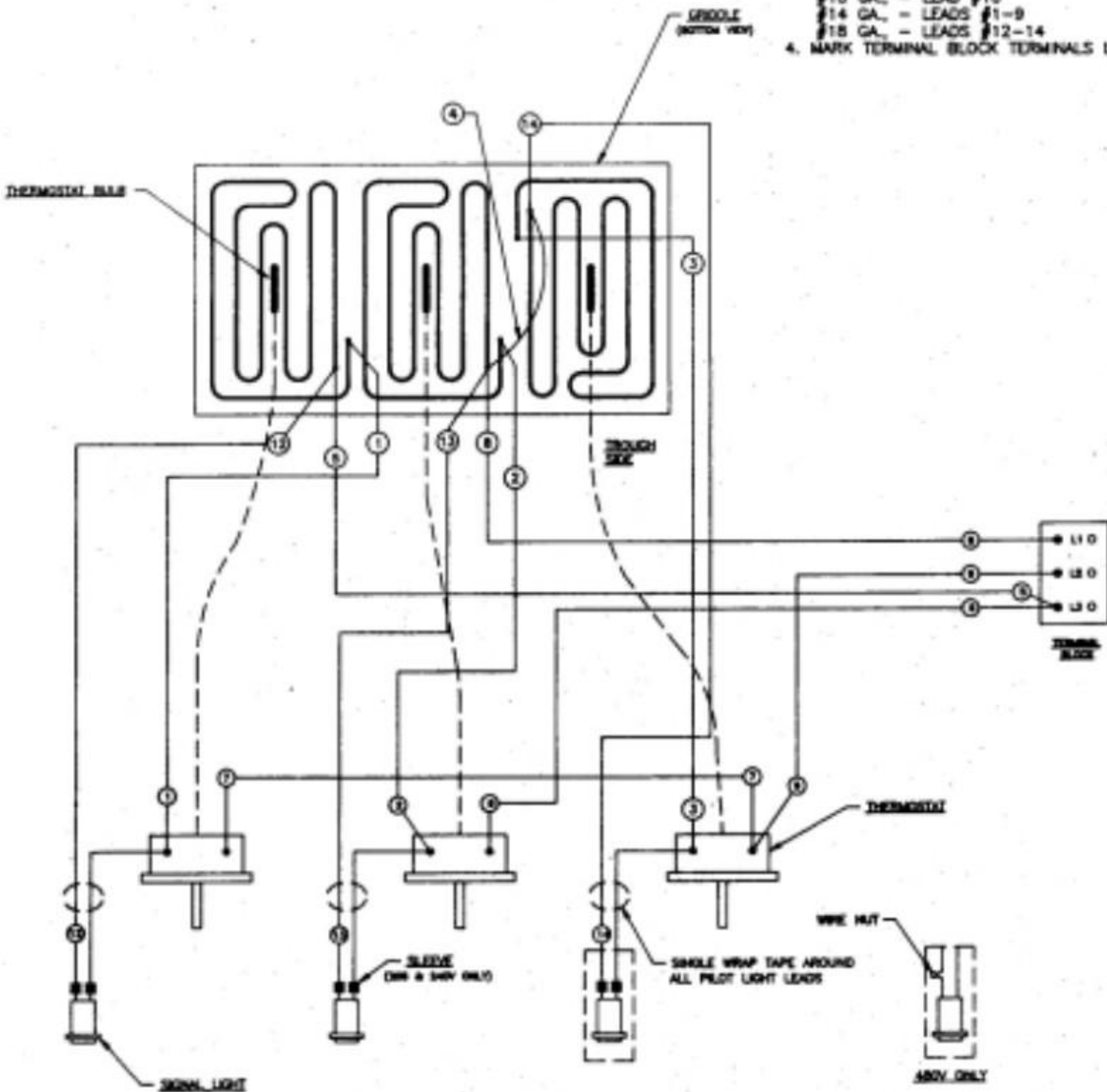
3. 480 VOLT WIRING TO BE:

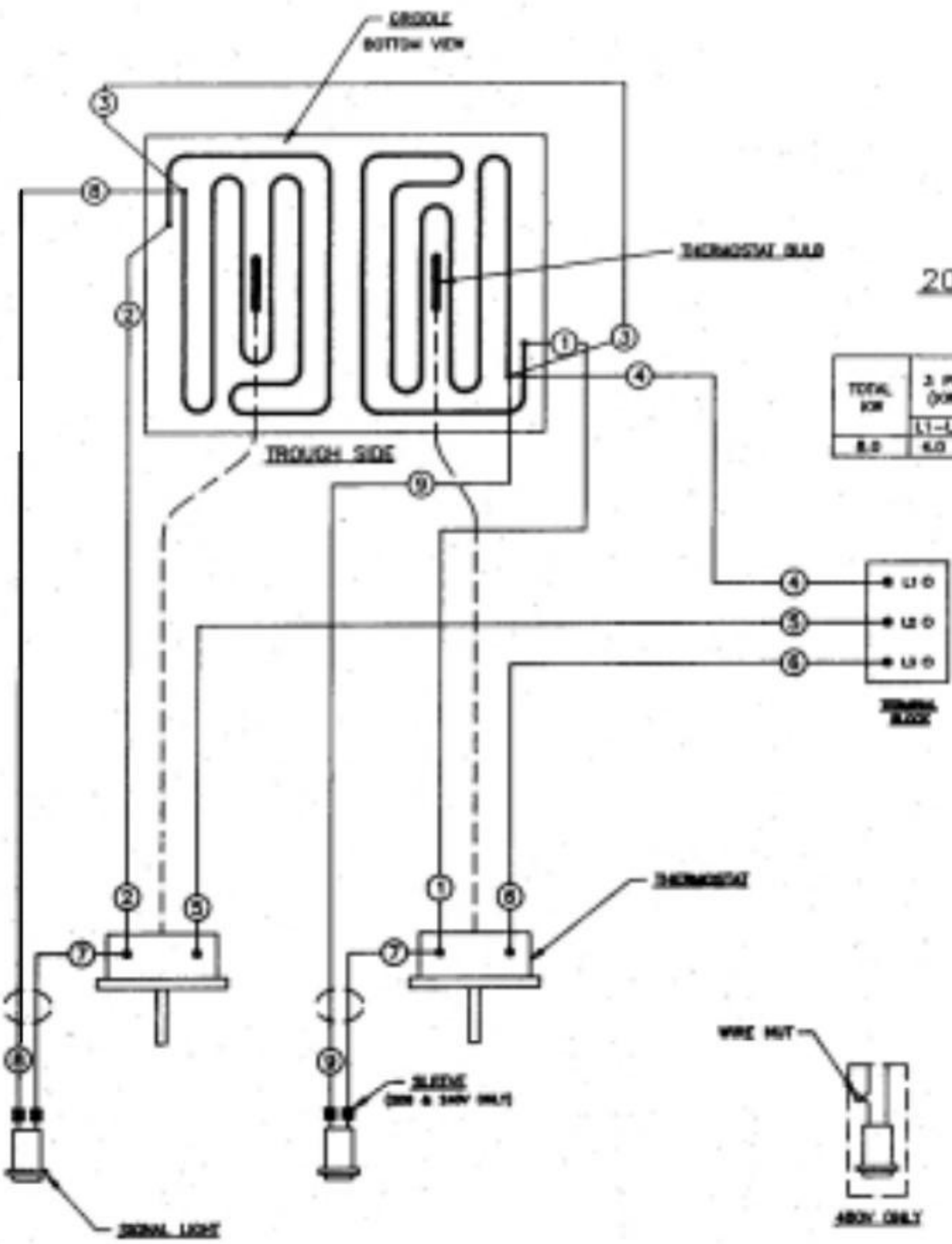
#10 GA. - LEAD #10

#14 GA. - LEADS #1-9

#18 GA. - LEADS #12-14

4. MARK TERMINAL BLOCK TERMINALS L1, L2 & L3 AS SHOWN





208/240/480 V.A.C. - 1 & 3 PHASE

| TOTAL KW | 3 PHASE LOADING (KW PER PHASE) | | NOMINAL AMPS PER LINE WIRE | | | | | | | | | | | | | |
|----------|--------------------------------|-----|----------------------------|-------|-------|------|------|------|------|------|------|------|------|------|------|------|
| | | | 208V | | | 240V | | | 480V | | | | | | | |
| | | | L1-L2 | L2-L3 | L1-L3 | L1 | L2 | L3 | L1 | L2 | L3 | L1 | L2 | L3 | | |
| 8.0 | 6.0 | 6.0 | 6.0 | 33.3 | 16.7 | 16.7 | 28.9 | 14.4 | 14.4 | 14.4 | 7.22 | 7.22 | 7.22 | 38.8 | 33.3 | 16.7 |

NOTES:

- LEAD INFORMATION FOR 480 VOLT:
 #16 GA. - LEADS #1-3, 5 & 6
 #14 GA. - LEAD #4
 #18 GA. - LEADS #7-9
- LEAD INFORMATION FOR 208/240 VOLT:
 #12 GA. - LEADS #1-3
 #10 GA. - LEAD #4
 #12 GA. - LEADS #5 & 6
- PHASE WIRING:
 FOR ONE PHASE - CONNECT WIRES #5 AND #6 TO ONE FIELD LINE WIRE AND WIRE #4 TO THE OTHER FIELD LINE WIRE.
 FOR THREE PHASE - CONNECT WIRE #4 TO "L1" FIELD LINE WIRE, WIRE #5 TO "L2" FIELD LINE WIRE AND WIRE #6 TO "L3" FIELD LINE WIRE.
- MARK TERMINAL BLOCK TERMINALS L1, L2 AND L3 AS SHOWN.