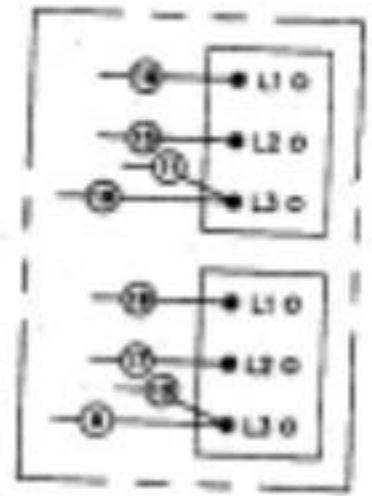
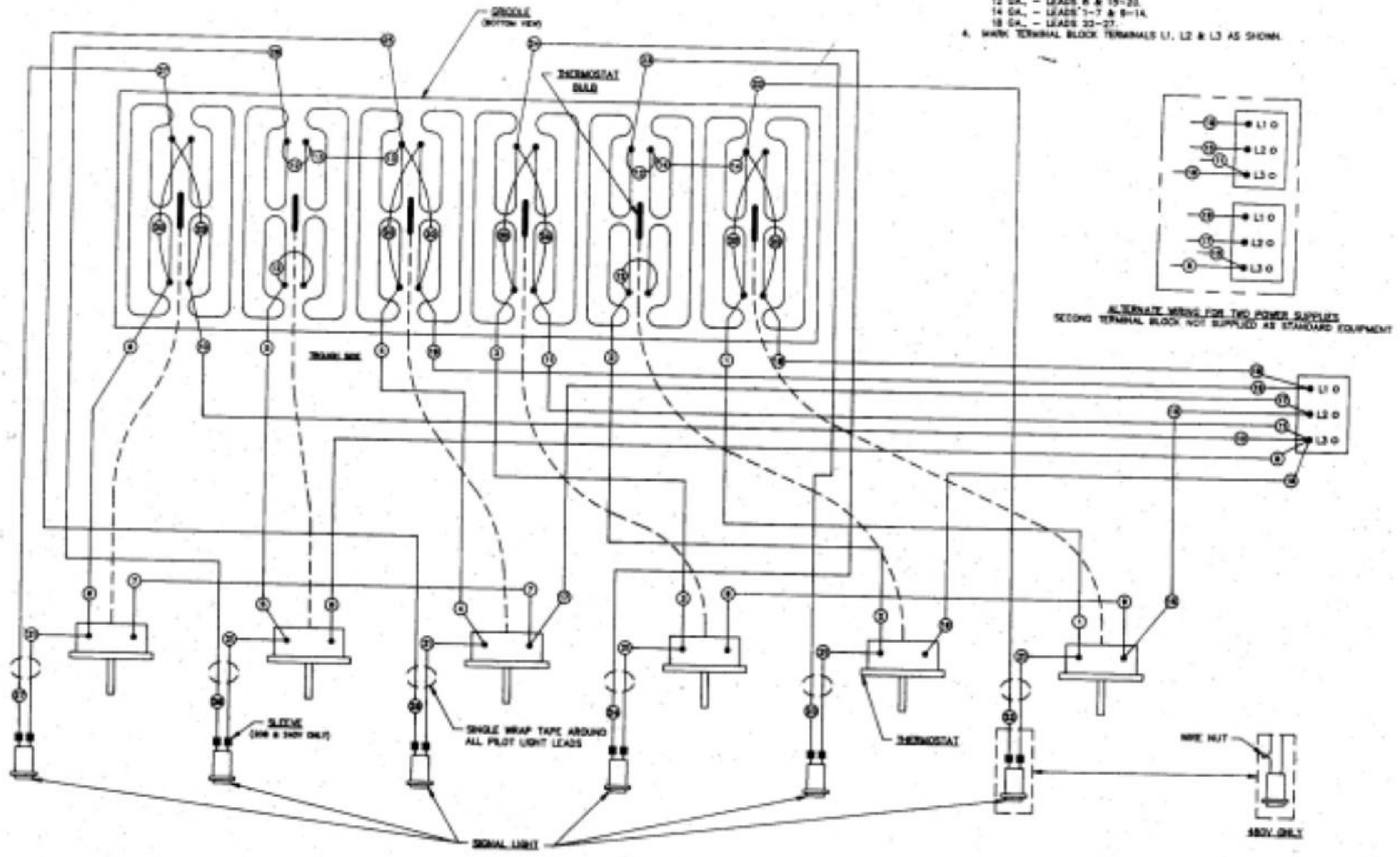
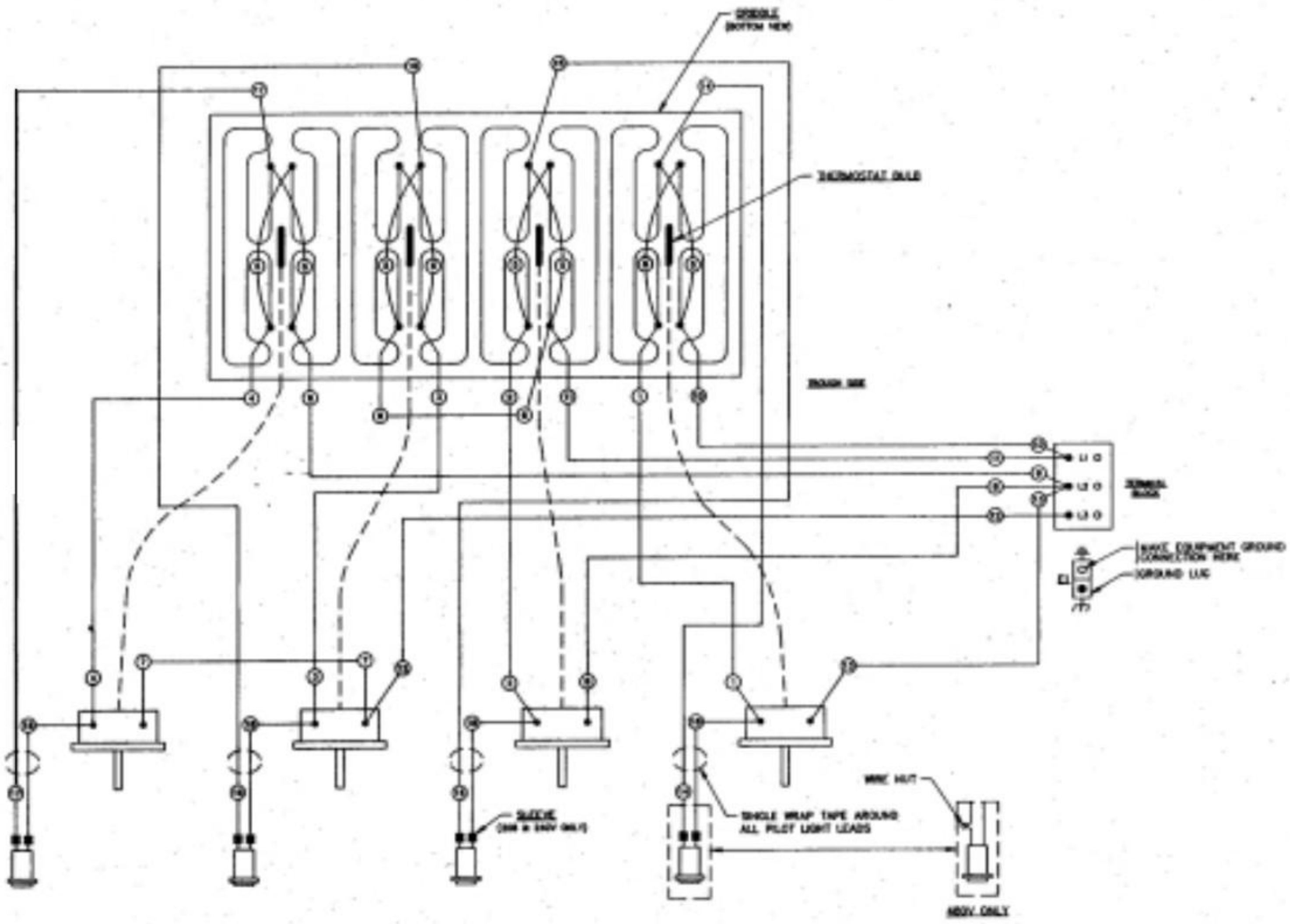


- NOTES (UNLESS OTHERWISE SPECIFIED)
1. WIRING SHOWN 3 PHASE ONLY
 2. 308-240V WIRING TO BE:
12 GA. - LEADS 1-20
18 GA. - LEADS 21-27
 3. 400V WIRING TO BE:
12 GA. - LEADS 8 & 19-23
14 GA. - LEADS 7-7 & 9-14
18 GA. - LEADS 22-27
 4. MARK TERMINAL BLOCK TERMINALS L1, L2 & L3 AS SHOWN



ALTERNATE WIRING FOR TWO POWER SUPPLIES
SECOND TERMINAL BLOCK NOT SUPPLIED AS STANDARD EQUIPMENT



SPRIGLE
BOTTOM HEAT

THERMOSTAT OIL

BURNER HEAT

SERIAL
WIRE

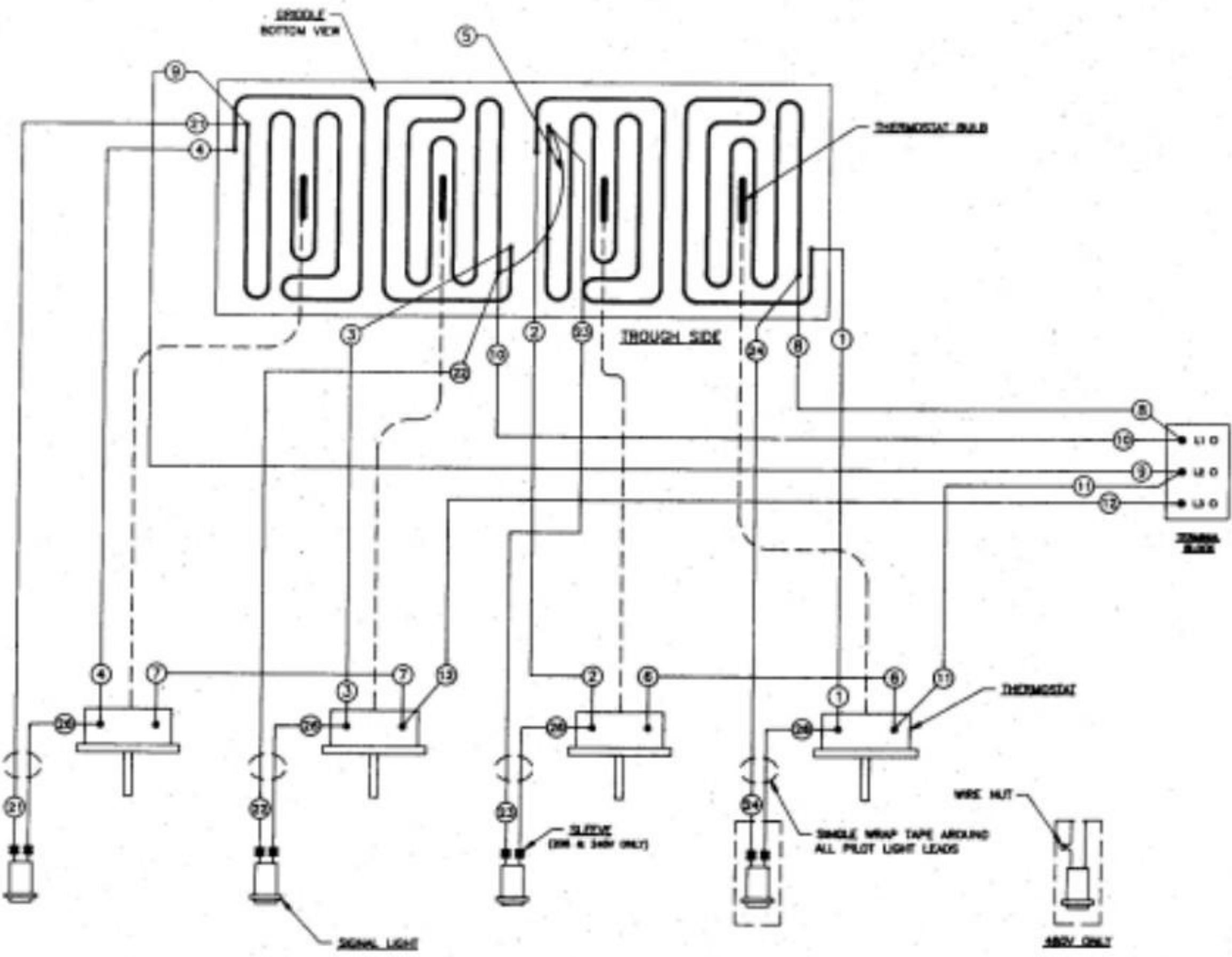
HAVE EQUIPMENT GROUND
CONNECTION HERE
GROUND LUG

SLEEVE
(ON 120V ONLY)

SINGLE WRAP TAPE AROUND
ALL PILOT LIGHT LEADS

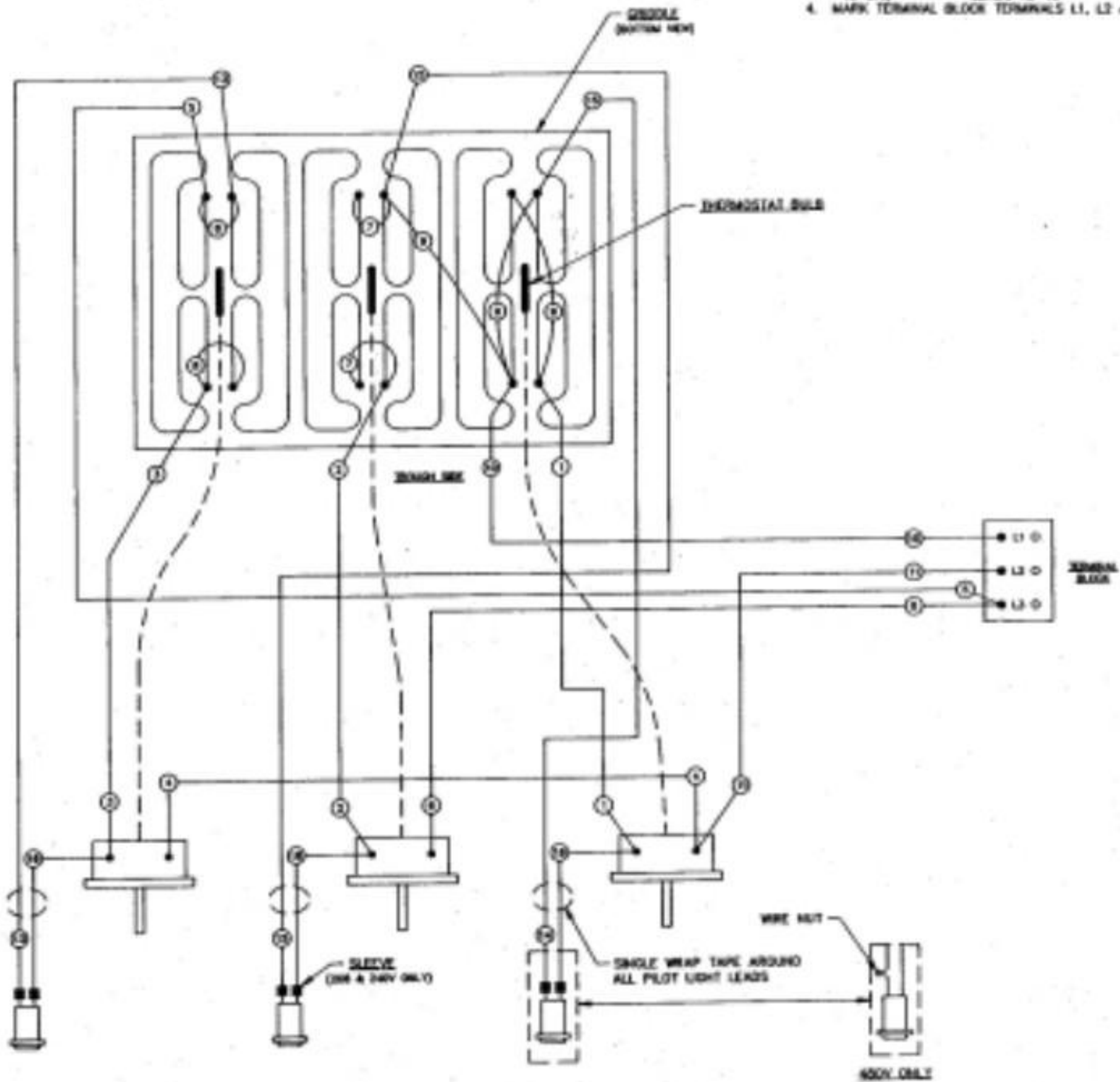
WIRE NUT

100V ONLY



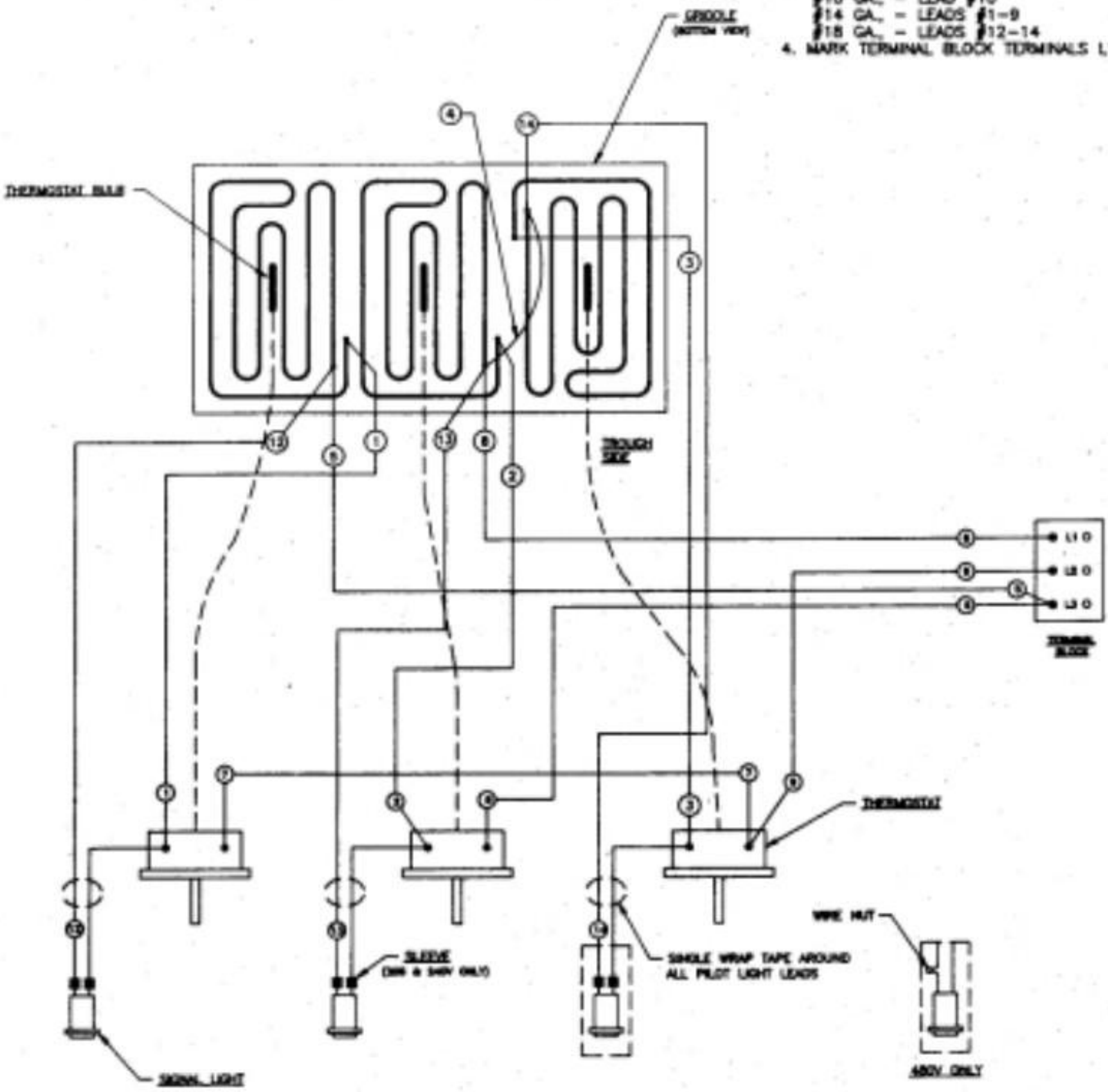
NOTES (UNLESS OTHERWISE SPECIFIED)

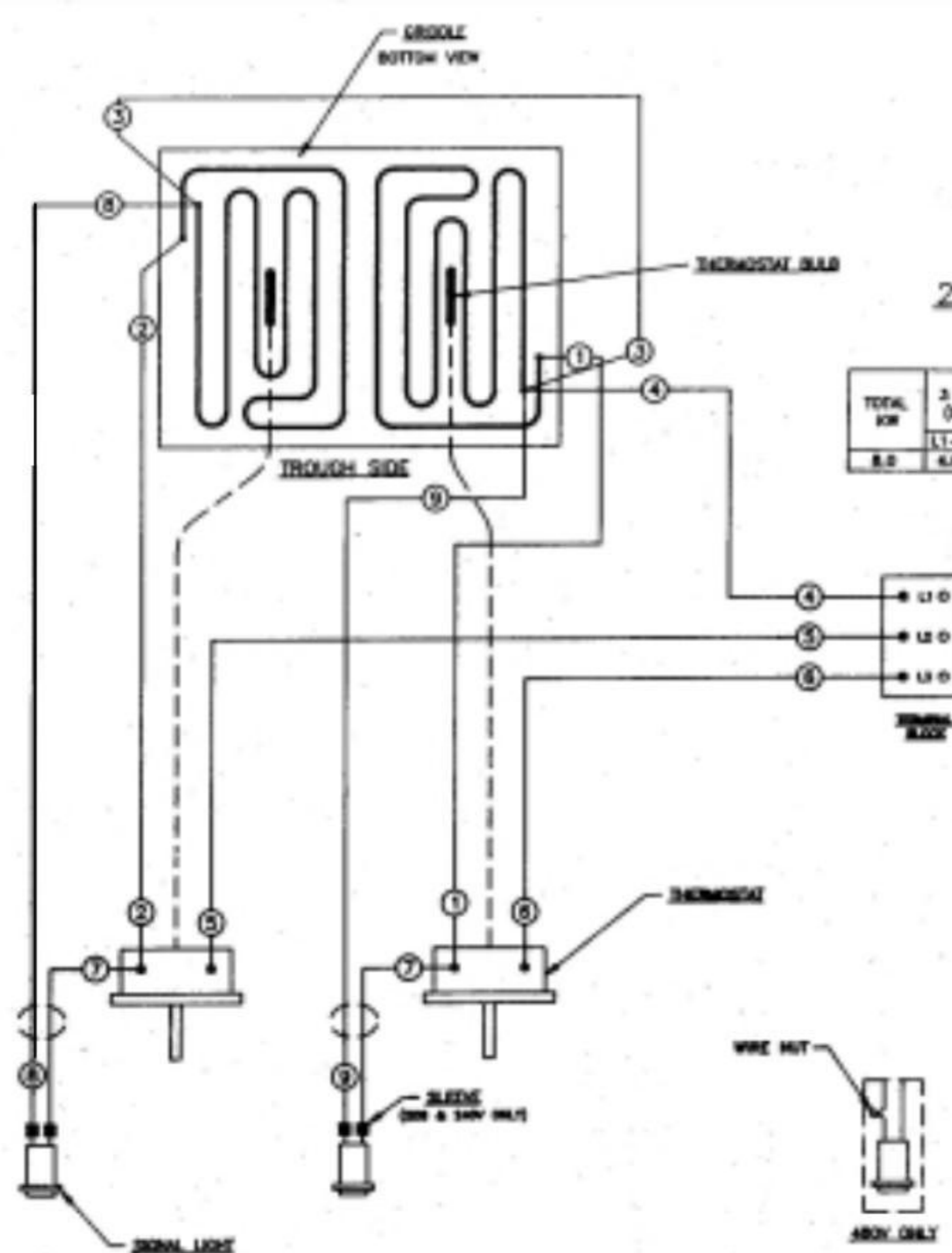
1. WIRING SHOWN 3 PHASE FOR SINGLE PHASE WIRING MOVE LEAD #3 TO TERMINAL "L1" AND LEAD #5 TO TERMINAL "L2".
2. 208-240V WIRING TO BE:
 - 10 GA. _____ LEADS 1-11
 - 18 GA. _____ LEADS 13-18
3. 480V WIRING TO BE:
 - 14 GA. _____ LEADS 1-9
 - 12 GA. _____ LEADS 10 & 11
 - 18 GA. _____ LEADS 13-15
4. MARK TERMINAL BLOCK TERMINALS L1, L2 & L3 AS SHOWN.



NOTES:

1. WIRING SHOWN FOR 3 PHASE, FOR SINGLE PHASE WIRING MOVE LEAD #5 TO TERMINAL L1 AND MOVE LEAD #6 TO TERMINAL L2.
2. 208-240 VOLT WIRING TO BE:
 #12 GA. - LEADS #1-5
 #12 GA. - LEADS #6 & 7
 #10 GA. - LEADS #8-10
 #18 GA. - LEADS #11-14
3. 480 VOLT WIRING TO BE:
 #10 GA. - LEAD #10
 #14 GA. - LEADS #1-9
 #18 GA. - LEADS #12-14
4. MARK TERMINAL BLOCK TERMINALS L1, L2 & L3 AS SHOWN





208/240/480 V.A.C. - 1 & 3 PHASE

TOTAL KW	3 PHASE LOADING (KW PER PHASE)			MINIMAL AMPS PER LINE WIRE											
				3 PHASE						1 PHASE					
	L1-L2	L2-L3	L1-L3	208V			240V			480V					
8.0	6.0	6.0	6.0	L1	L2	L3	L1	L2	L3	L1	L2	L3	208V	240V	480V
				33.3	16.7	16.7	28.9	14.4	14.4	14.4	7.22	7.22	38.8	33.3	16.7

NOTES:

1. LEAD INFORMATION FOR 480 VOLT:

#16 GA. - LEADS #1-3, 5 & 6

#14 GA. - LEAD #4

#18 GA. - LEADS #7-9

2. LEAD INFORMATION FOR 208/240 VOLT:

#12 GA. - LEADS #1-3

#10 GA. - LEAD #4

#12 GA. - LEADS #5 & 6

3. PHASE WIRING:

FOR ONE PHASE - CONNECT WIRES #5 AND #6 TO ONE FIELD LINE WIRE AND WIRE #4 TO THE OTHER FIELD LINE WIRE.

FOR THREE PHASE - CONNECT WIRE #4 TO "L1" FIELD LINE WIRE, WIRE #5 TO "L2" FIELD LINE WIRE AND WIRE #6 TO "L3" FIELD LINE WIRE.

4. MARK TERMINAL BLOCK TERMINALS L1, L2 AND L3 AS SHOWN.