



Your Solutions Partner

# Instruction Sheet

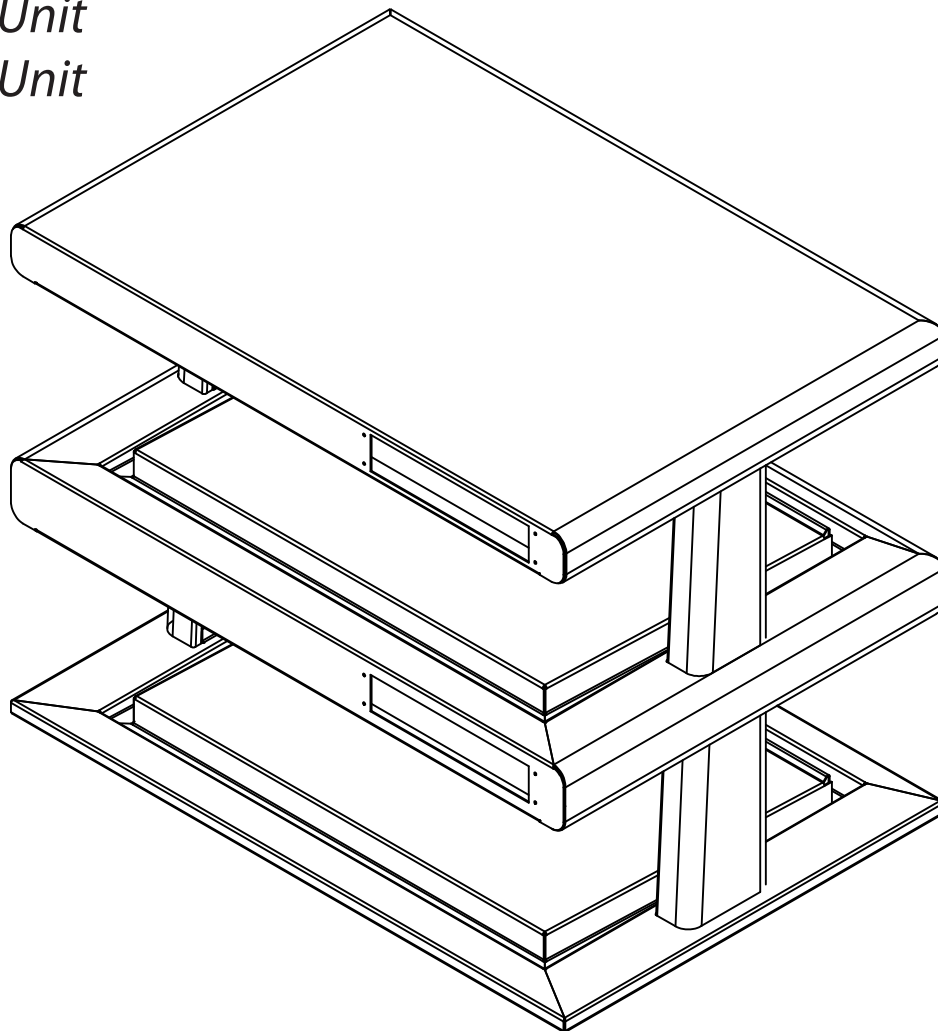
## Hot Frost Light Kit

114194 - 35" Unit

114197 - 48" and 50" Unit

114201 - 64" Unit

114204 - 91" Unit



**CAUTION:** Please read these instructions completely before attempting to install, operate or service this equipment.

 **WARNING for CA residents: go to [www.dukemfg.com/prop65](http://www.dukemfg.com/prop65) for prop 65 warning**

*This manual is Copyright © 2021 Duke Manufacturing Co. All rights reserved.  
Reproduction without written permission is prohibited. Duke is a registered  
trademark of the Duke Manufacturing Co.*

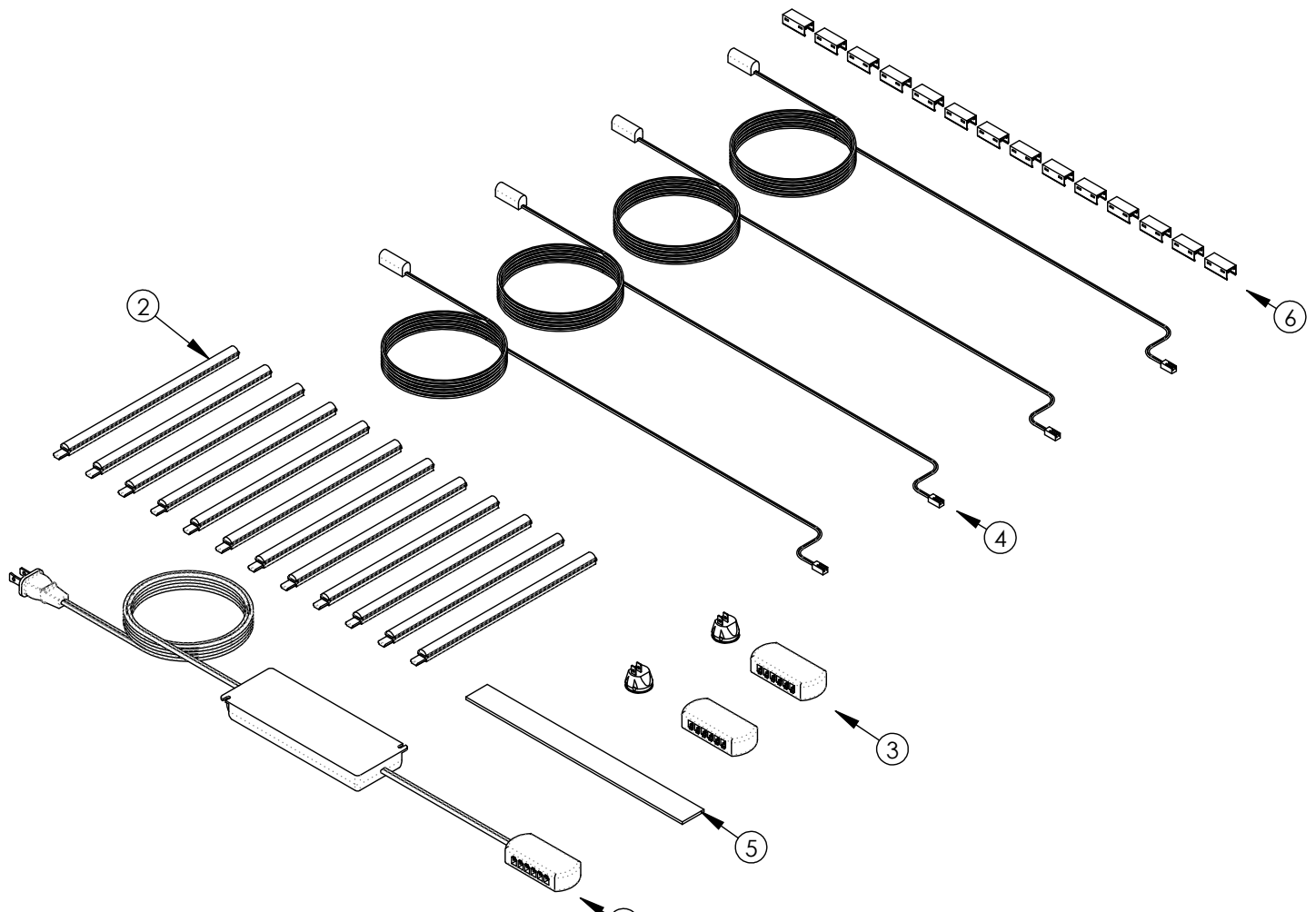
**P/N 529827  
REV A 03/03/2021**

## PARTS INCLUDED

Item	Part Number	Description	114332 35" Unit	114333 48" - 50" Units	114334 64" Unit	114335 91" Unit
1	114074	75W LED Power Supply	1	1	1	1
2	<a href="#">114179</a>	LED Light 8" CW 2.4W	12	20	24	36
3	114058	LED Switch	2	2	2	2
4	<a href="#">114180</a>	LED Power Cord	4	4	4	4
5	0337210	1"X 108'VHB Dbl Side Tape	1	1	1	1
6	114181	Magnetic Mounting Clips	14	22	26	38
7*	<a href="#">114182</a>	12" Connecting Cable*	N/A	N/A	N/A	2
8*	Various	Mounting Plate	1	1	1	1
9*	<a href="#">213032</a>	Screws, 8-18X1/2" TEK PHIL	6	10	12	20
10*	PT3003190	#29 Drill Bit	1	1	1	1

\* Not Shown

### NUMBER OF PARTS VARY BY KIT



## Tools Needed



Cordless Drill



Philips Screw Driver



Straight Blade Screw Driver

## INSTRUCTIONS

1 Open box and verify you have all the parts for your size unit.

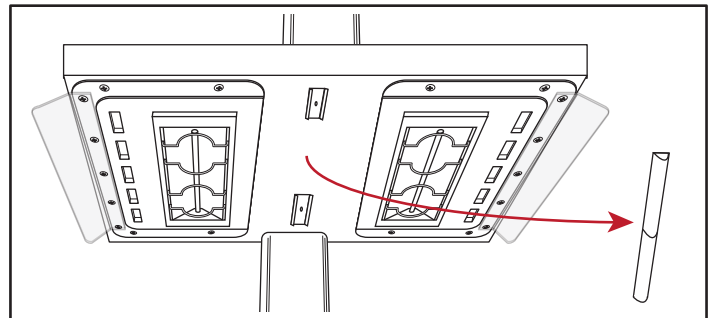
2 **DISCONNECT ALL POWER TO UNIT.**

**CAUTION**

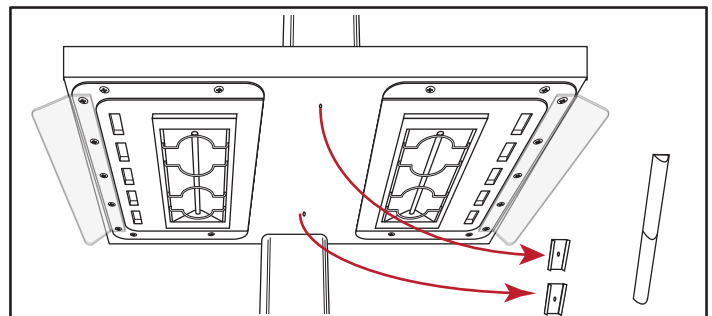


Failure to complete could cause bodily injury.

3 Remove light covers and remove existing lights from retainer clips.



4 Using the #29 drill bit provided, drill out the rivets to remove the retaining clips.



## INSTRUCTIONS

5

Remove old light harness. 

7

Using the screws provided install mounting plate using the hole location drill out in step 4,

8

Install magnetic brackets onto the new plate installed in step 7

9

Install new LED lights.



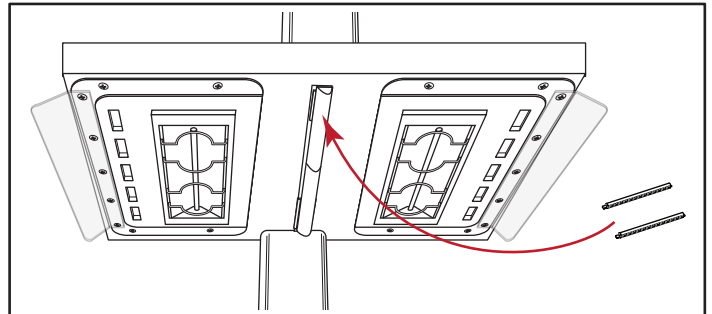
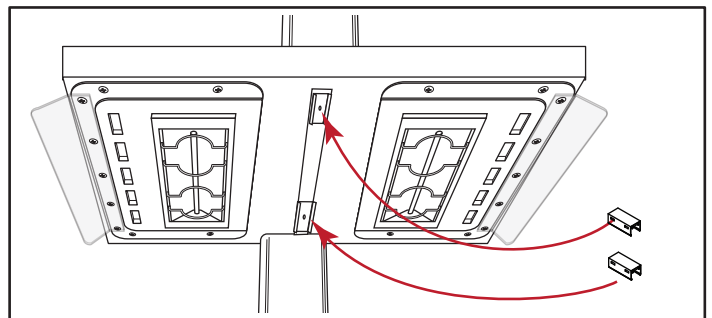
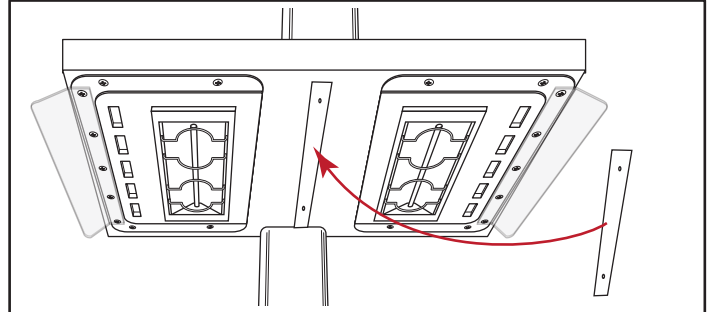
**Note:** For 91" unit (2) connecting cables are used to daisy chain lights at midpoint.

10

Reconnect power to unit. 

6

Install new power cords.



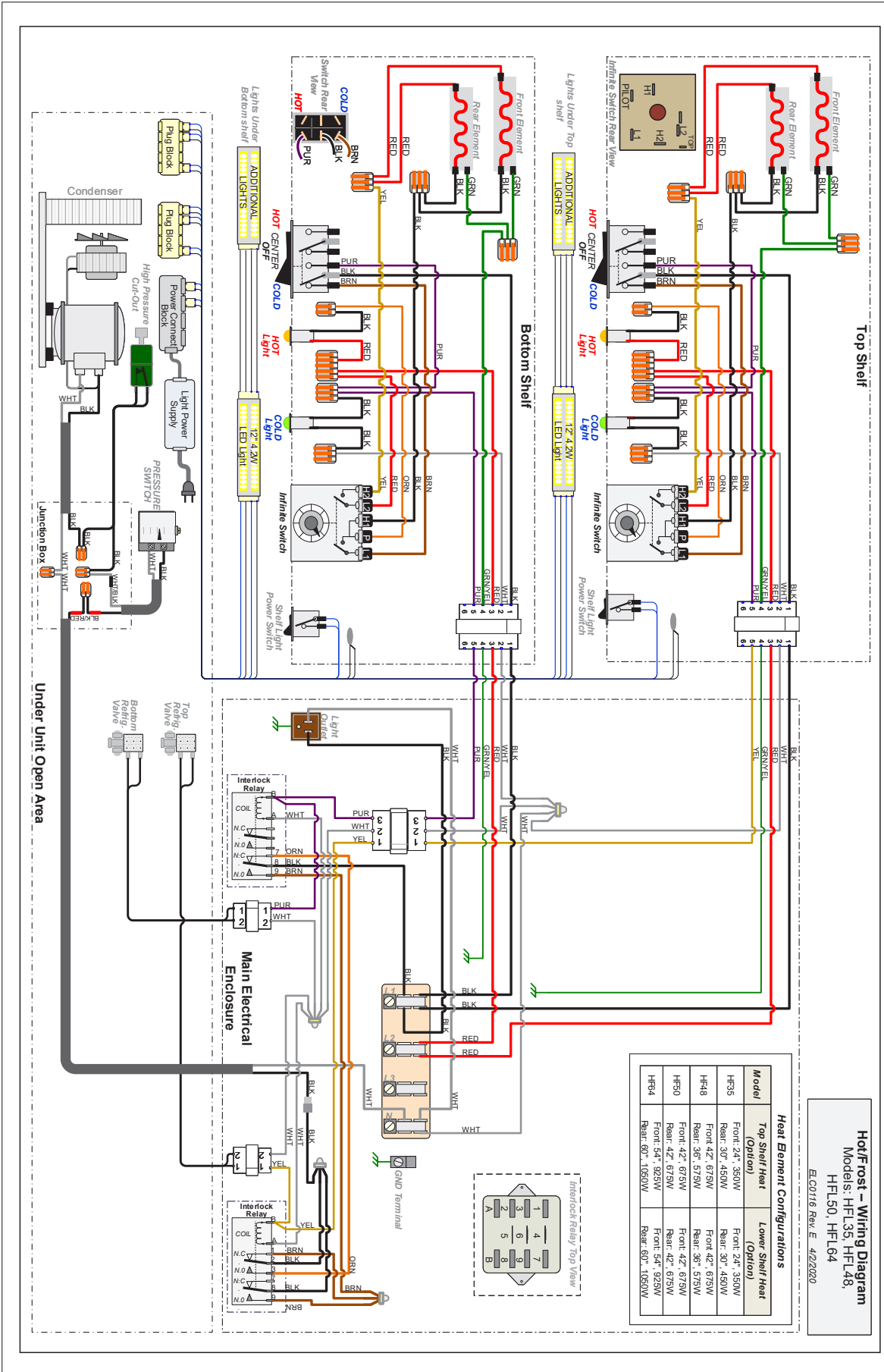
11

Power on unit and verify lights are properly working.

12

Discard all components properly removed from the unit. Recycling if possible

# WIRE DIAGRAMS









Your Solutions Partner

---

**Duke Manufacturing Co.**

2305 N. Broadway  
St. Louis, MO 63102

Phone: 314-231-1130  
Toll Free: 1-800-735-3853  
Fax: 314-231-5074

[www.dukemfg.com](http://www.dukemfg.com)