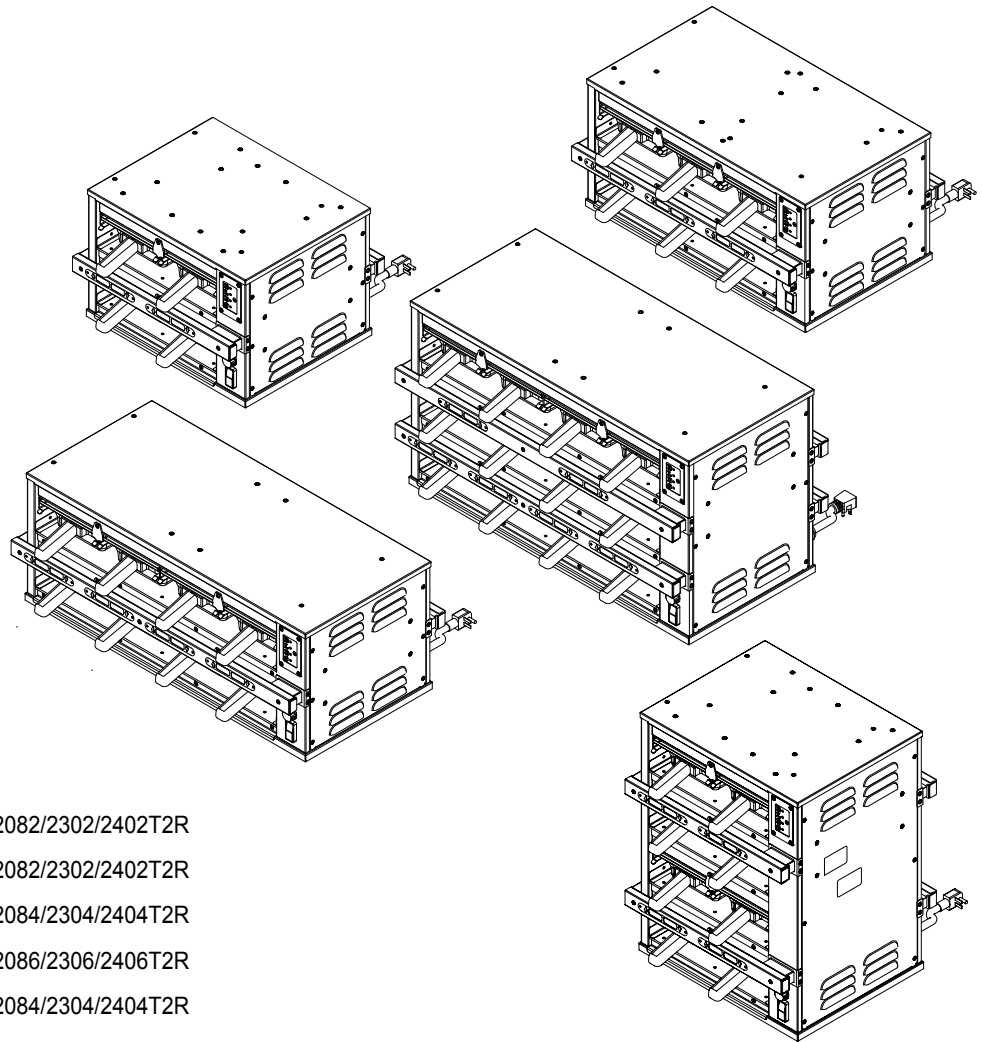




Your Solutions Partner

Illustrated Parts List

HS2 DUAL HEATSINK HOLDING UNITS



MODELS

| | |
|--------------------------|--------------------------|
| HS2-22-2082/2302/2402T1R | HS2-22-2082/2302/2402T2R |
| HS2-23-2082/2302/2402T1R | HS2-23-2082/2302/2402T2R |
| HS2-24-2084/2304/2404T1R | HS2-24-2084/2304/2404T2R |
| HS2-34-2086/2306/2406T1R | HS2-34-2086/2306/2406T2R |
| HS2-42-2084/2304/2404T1R | HS2-42-2084/2304/2404T2R |

*This manual is Copyright © 2018 Duke Manufacturing Co. All rights reserved.
Reproduction without written permission is prohibited. Duke is a registered
trademark of the Duke Manufacturing Co.*

Duke Manufacturing Co.

2305 N. Broadway • St. Louis, MO 63102

800.735.3853 • 314.231.1130

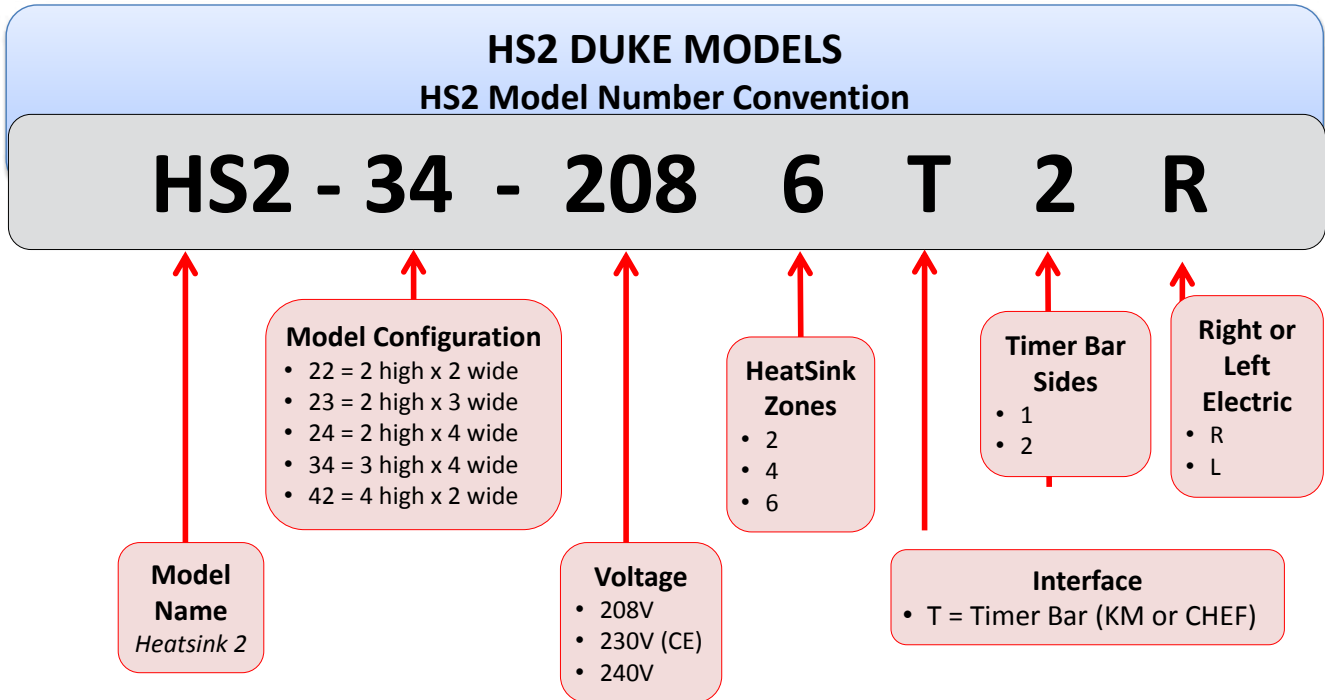
Fax: 314-231-5074

www.dukemfg.com

TABLE OF CONTENTS

| | |
|--|----|
| HS2 MODEL NUMBER CONVENTION | 3 |
| TIMER BAR MODELS (HS2-22-2082/2302/2402 T1R & T2R) | 4 |
| Figure: PL-2 TIMER BAR MODELS (HS2-22-2082/2302/2402 T1R & T2R) | 4 |
| Table: PL-2 TIMER BAR MODELS (HS2-22-2082/2302/2402 T1R & T2R) | 5 |
| TIMER BAR MODELS (HS2-23-2082/2302/2402 T1R & T2R) | 6 |
| Figure: PL-4 TIMER BAR MODELS (HS2-23-2082/2302/2402 T1R & T2R) | 6 |
| Table: PL-4 TIMER BAR MODELS (HS2-23-2082/2302/2402 T1R & T2R) | 7 |
| TIMER BAR MODELS (HS2-24-2084/2304/2404 T1R & T2R) | 8 |
| Figure: PL-6 TIMER BAR MODELS (HS2-24-2084/2304/2404 T1R & T2R) | 8 |
| Table: PL-6 TIMER BAR MODELS (HS2-24-2084/2304/2404 T1R & T2R) | 9 |
| TIMER BAR MODELS (HS2-34-2086/2306/2406 T1R & T2R) | 10 |
| Figure: PL-8 TIMER BAR MODELS (HS2-34-2086/2306/2406 T1R & T2R) | 10 |
| Table: PL-8 TIMER BAR MODELS (HS2-34-2086/2306/2406 T1R & T2R) | 11 |
| TIMER BAR MODELS (HS2-42-2084/2304/2404 T1R & T2R) | 12 |
| Figure: PL-10 TIMER BAR MODELS (HS2-42-2084/2304/2404 T1R & T2R) | 12 |
| Table: PL-10 TIMER BAR MODELS (HS2-42-2084/2304/2404 T1R & T2R) | 13 |
| WIRING DIAGRAMS | 14 |
| HS2-22, 2-Zone Models | 14 |
| HS2-23, 2-Zone Models | 15 |
| HS2-23, 4-Zone Models | 16 |
| HS2-24, 4-Zone Models | 17 |
| HS2-34, 6-Zone Models | 18 |
| HS2-42, 4-Zone Models | 19 |
| HS2-22, 2-Zone CE Models | 20 |
| HS2-23, 4-Zone CE Models | 21 |
| HS2-24, 4-Zone CE Models | 22 |
| HS2-34, 6-Zone CE Models | 23 |
| HS2-42, 4-Zone CE Models | 24 |

HS2 MODEL NUMBER CONVENTION



TIMER BAR MODELS (HS2-22-2082/2302/2402 T1R & T2R)

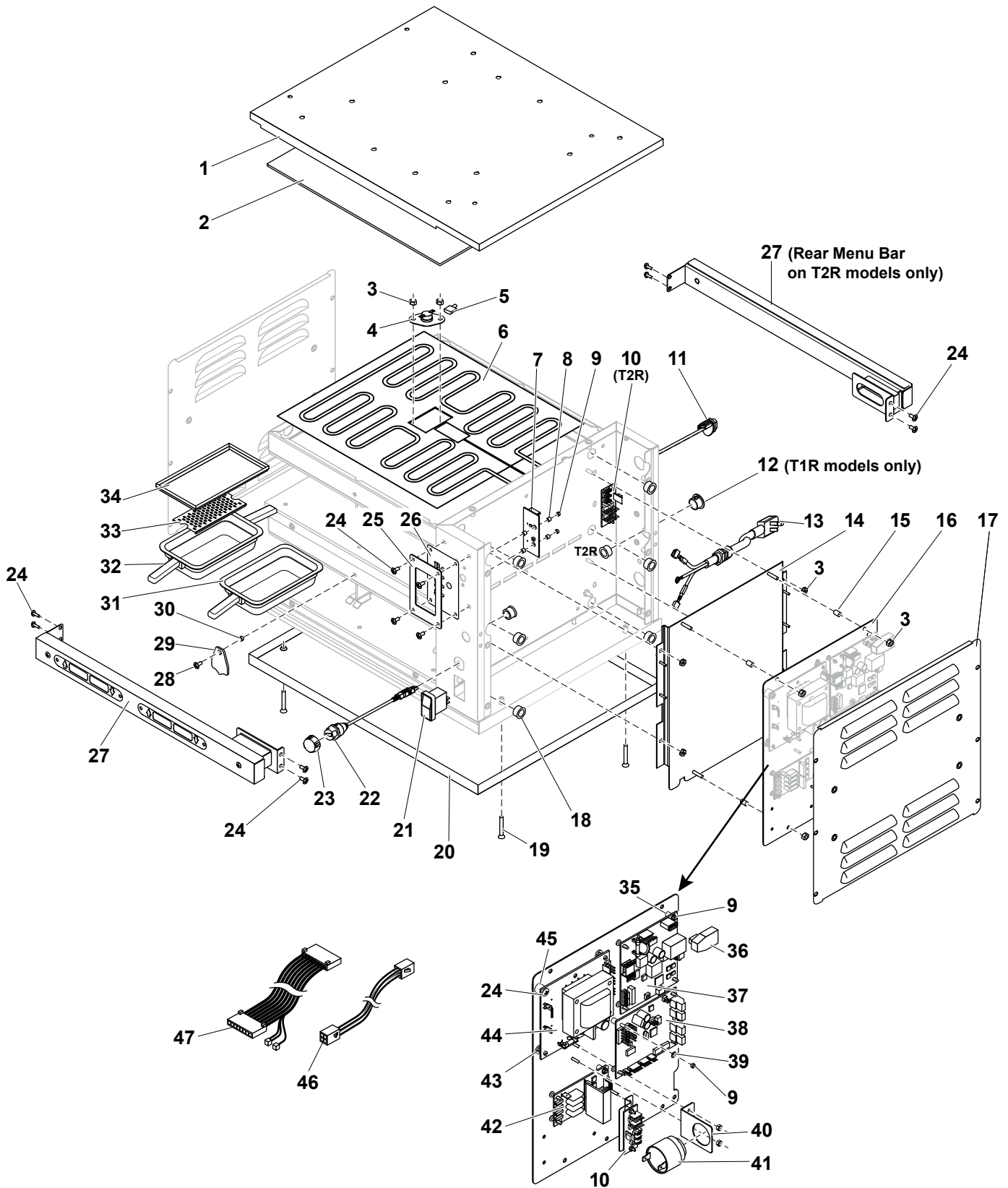


Figure: PL-1 TIMER BAR MODELS (HS2-22-2082/2302/2402 T1R & T2R)

TIMER BAR MODELS (HS2-22-2082/2302/2402 T1R & T2R)

| ITEM | PN | DESCRIPTION | QTY | |
|-----------|-----------|---|--------------|--------------|
| | | | T1R - Models | T2R - Models |
| 1 | 1059-0521 | HS2, TOP 2W RF | | 1 |
| 2 | 1059-0528 | HS2, INSULATION 1/8" 2W | | 1 |
| 3 | 155680 | NUT, KEPS 8-32 HEX ZP | | 56 |
| 4 | 158312 | THERMOSTAT, HI-LIMIT 300 DEG W/FLANGE | | 4 |
| 5 | 222603 | WIRE, JUMPER HS2 HEAT ELEMENT COM. | | 4 |
| 6 | 225225 | Heater, 2 Wide 208/240V, | | 4 |
| Not shown | 158279 | RTD, 1000 OHM-MEDIUM | | A/R |
| 7 | 225184 | DUKE DAY PART PCB | | 1 |
| 8 | 225171 | SPACER ROUND 1/4" X 1/8" IS DIA .115 | | 12 |
| 9 | 223470 | NUT, 4-40 NYLON LOCKNUT | 6 | 8 |
| 10 | 225181 | ASY, TIMER BAR 5V POWER PCB | 1 | 2 |
| 11 | 166111 | MODULAR, JACK IP67 | | 1 |
| 12 | 1059-0723 | HS2, MENU BAR HOLE PLUG | 1 | – |
| 13 | 222170 | CORD POWER 15 AMP 208/240V | | 1 |
| | 160448 | CORD POWER 16 AMP 230V IEC60309 | | 1 |
| 14 | 1059-0435 | HS2, ASY, CTRL VENT DUCT 2H | | 1 |
| 15 | 225168 | SPACER, ALUM .250 OD X .375 LENGTH X #8 SCREW | | 4 |
| 16 | 1059-0537 | HS2, CRTL MTG PLATE 2H PEMS | | 1 |
| 17 | 1059-0445 | ACCESS PANEL 2H (208/240V Units = 2) | | 1 or 2 |
| | 1059-0571 | ACCESS PANEL 2H CE (Control Side of 230V Units) | | 1 |
| 18 | 225173 | HEYCO, SNAP BUSHING OCB-625 | 7 | 8 |
| 19 | 10280050 | SCREW, 8-32X1-1/4FL PH SS MACHINE | | 4 |
| 20 | 1059-0456 | HS2, BASE PAN 2W | | 1 |
| 21 | 169629 | SWITCH, SEALED CARLING | | 1 |
| 22 | 225236 | USB Adapter | | 1 |
| 23 | 225237 | USB Cover | 1 | 2 |
| 24 | 279500 | SCREW, 8-32X1/2" PTHMS 18-8SS | | 50 |
| 25 | 1059-0394 | HS2, BEZEL DAYPART MYLAR | | 1 |
| 26 | 225165 | MYLAR DAYPART | | 1 |
| 27 | 1059-0750 | HS2 MENU BAR 2W | 1 | 2 |
| | 1059-0474 | HS2 Menu Bar 2W (Replaced by 1059-0750 - 3/7/2017) | 1 | 2 |
| 28 | 223450 | SCREW, 8-32X3/8" PHIL TRUSS HD MACHINE, S/S NYLOK PATCH | | 4 |
| 29 | 1059-0499 | HS2, PAN STOP COVER | | 4 |
| 30 | 225238 | HS2, Spacer Cover Stop | | 4 |
| Not shown | 600532 | Kit, HS2 Cover Stop with 6-32 Nutsert Tool | | 1 |
| 31 | 156602 | Pan, Single Handle | | 1 |
| 32 | 156634 | Pan, Double Handle | | 1 |
| 33 | E030951 | TRIVET, METAL, 1/3 SIZE PAN | | 4 |
| 34 | 1059-0498 | HS2 Pan Cover | | 1 |
| 35 | 166100 | SPACER, TUBE NYLON 0.250D X 0.125ID X 0.375H | | 1 |
| 36 | 166184 | USB. 2.0 MALE TO FEMALE RT. ANGLE ADAPTER | | 1 |
| 37 | 166101 | SUPPORT, LOCK-IN PC | | 1 |
| 38 | 600517 | Kit, Service, PCB, IO, HS2 | | 1 |
| 39 | 166102 | WASHER, 0.375OD X 0.13ID X 0.062THK | | 1 |
| 40 | 1059-0384 | HS2, BUZZER MTG BRKT | | 1 |
| 41 | 512766 | BUZZER, ULTRA LOUD CONTINUOUS TONE | | 1 |
| 42 | 166114 | TRIAC PCB ASY | | 1 |
| 43 | 176770 | ACM PCB ASY, FBBT | | 1 |
| 44 | 120011 | PCB, 12V PWR 208/230V | | 1 |
| 45 | 120158 | SPACER, NUT .375" | | 2 |
| 46 | 225219 | Harness, timer bar exit, quad | | 1 |
| 47 | 225216 | Day part harness | | 1 |
| | 225221 | HARNESS IDC 12V & CAN | | 1 |
| Not shown | 166105 | JUMPER, HEAT TRIAC PCB | | 1 |
| Not shown | 225234 | HARNESS MAIN AC – HS2 | | 1 |
| Not shown | 166110 | HARNESS, AC DMC 2X2 | | 1 |
| Not shown | 118027 | Cable, CAT5E Ethernet, Black, 25ft | | 1 |

Table: PL-1 TIMER BAR MODELS (HS2-22-2082/2302/2402 T1R & T2R)

TIMER BAR MODELS (HS2-23-2082/2302/2402 T1R & T2R)

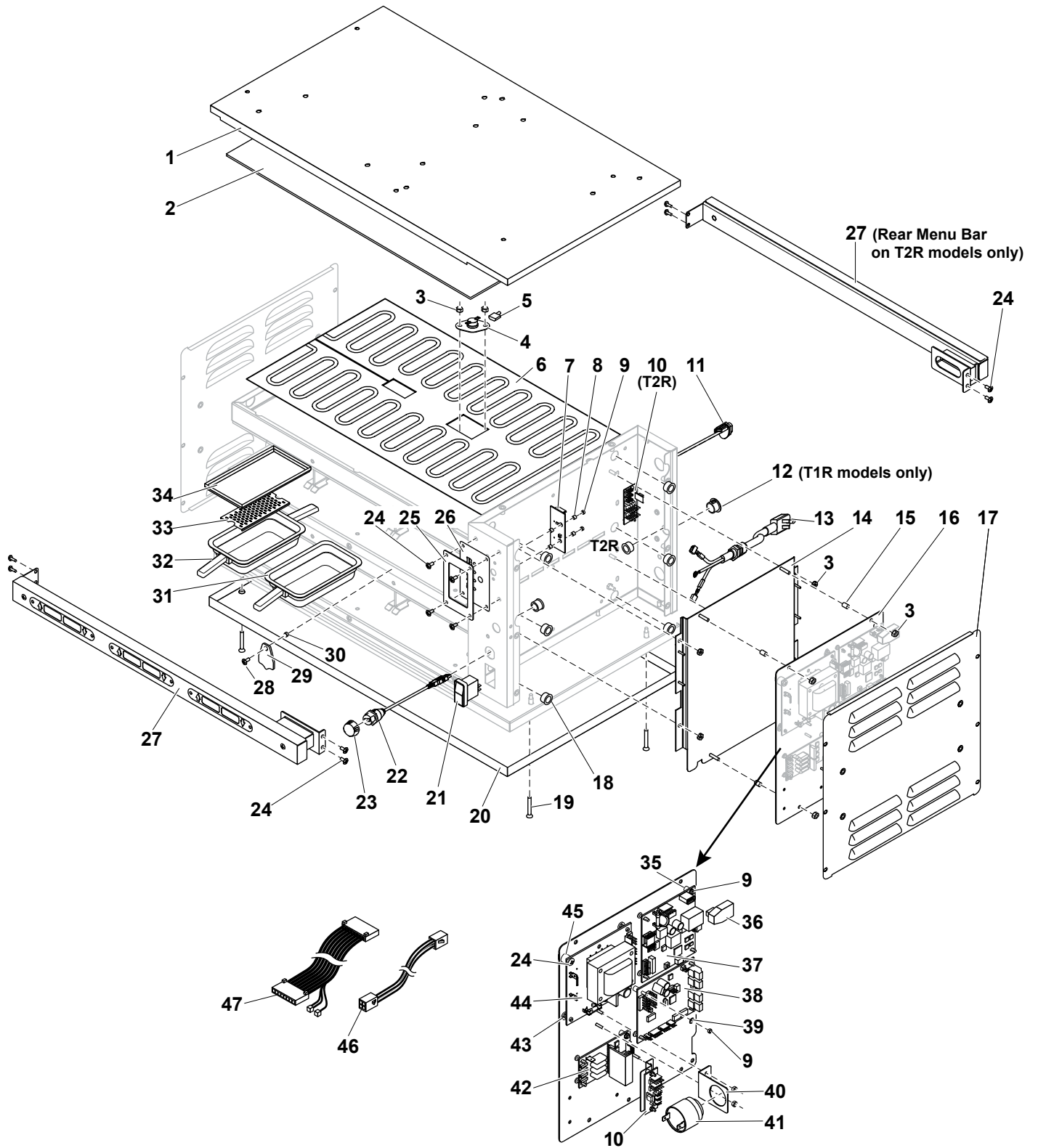


Figure: PL-2 TIMER BAR MODELS (HS2-23-2082/2302/2402 T1R & T2R)

TIMER BAR MODELS (HS2-23-2082/2302/2402 T1R & T2R)

| ITEM | PN | DESCRIPTION | QTY | |
|-----------|-----------|---|--------------|--------------|
| | | | T1R - Models | T2R - Models |
| 1 | 1059-0519 | HS2, TOP 3W RF | 1 | |
| 2 | 1059-0255 | INSULATION 1/8" 3W | 1 | |
| 3 | 155680 | NUT, KEPS 8-32 HEX ZP | 65 | |
| 4 | 158312 | THERMOSTAT, HI-LIMIT 300 DEG W/FLANGE | 2 | |
| 5 | 222603 | WIRE, JUMPER HS2 HEAT ELEMENT COM. | 4 | |
| 6 | 225174 | Heater, 2 Wide, 208/240V | 4 | |
| | 225257 | Heater, 1 Wide, 208/240V | 4 | |
| | 225223 | Heater, 3 Wide, 208/240V <i>(Replaced by 225174 & 225257)</i> | 4 | |
| Not shown | 158279 | RTD, 1000 OHM-MEDIUM | A/R | |
| 7 | 225184 | DUKE DAY PART PCB | 1 | |
| 8 | 225171 | SPACER ROUND 1/4" X 1/8" IS DIA .115 | 4 | |
| 9 | 223470 | NUT, 4-40 NYLON LOCKNUT | 9 | 11 |
| 10 | 225181 | ASY, TIMER BAR 5V POWER PCB | 1 | 2 |
| 11 | 166111 | MODULAR, JACK IP67 | 1 | |
| 12 | 1059-0723 | HS2, MENU BAR HOLE PLUG | 1 | - |
| 13 | 222170 | CORD POWER 15 AMP 208/240V | 1 | |
| | 160448 | CORD POWER 16 AMP 230V IEC60309 | 1 | |
| 14 | 1059-0435 | HS2, ASY, CTRL VENT DUCT 2H | 1 | |
| 15 | 225168 | SPACER, ALUM .250 OD X .375 LENGTH X #8 SCREW | 4 | |
| 16 | 1059-0537 | HS2, CRTL MTG PLATE 2H PEMS | 1 | |
| 17 | 1059-0445 | ACCESS PANEL 2H <i>(208/240V Units = 2)</i> | 1 or 2 | |
| | 1059-0571 | ACCESS PANEL 2H CE <i>(Control Side of 230V Units)</i> | 1 | |
| 18 | 225173 | HEYCO, SNAP BUSHING OCB-625 | 7 | 8 |
| 19 | 10280050 | SCREW, 8-32X1-1/4 FL PH SS MACHINE | 4 | |
| 20 | 1059-0452 | HS2, BASE PAN 3W | 1 | |
| 21 | 169629 | SWITCH, SEALED CARLING | 1 | |
| 22 | 225236 | USB Adapter | 1 | |
| 23 | 225237 | USB Cover | 1 | |
| 24 | 279500 | SCREW, 8-32X1/2" PTHMS 18-8SS | 54 | |
| 25 | 1059-0394 | HS2, BEZEL DAYPART MYLAR | 1 | |
| 26 | 225165 | MYLAR DAYPART | 1 | |
| 27 | 1059-0719 | HS2, MENU BAR 3W | 1 | 2 |
| | 1059-0443 | HS2, Menu Bar, 3W <i>(Replaced by 1059-0719 - 3/7/2017)</i> | 1 | 2 |
| 28 | 223450 | SCREW, 8-32X3/8" PHIL TRUSS HD MACHINE, S/S NYLOK PATCH | 8 | |
| 29 | 1059-0499 | HS2, PAN STOP COVER | 8 | |
| 30 | 225238 | HS2, Spacer Cover Stop | 8 | |
| Not shown | 600532 | Kit, HS2 Cover Stop with 6-32 Nutsert Tool | 1 | |
| 31 | 156602 | Pan, Single Handle | 1 | |
| 32 | 156634 | Pan, Double Handle | 1 | |
| 33 | E030951 | TRIVET, METAL, 1/3 SIZE PAN | 6 | |
| 34 | 1059-0498 | HS2 Pan Cover | 1 | |
| 35 | 166100 | SPACER, TUBE NYLON 0.250D X 0.125ID X 0.375H | 1 | |
| 36 | 166184 | USB. 2.0 MALE TO FEMALE RT. ANGLE ADAPTER | 1 | |
| 37 | 166101 | SUPPORT, LOCK-IN PC | 1 | |
| 38 | 600517 | Kit, Service, PCB, IO3, HS2 | 1 | |
| 39 | 166102 | WASHER, 0.375OD X 0.13ID X 0.062THK | 1 | |
| 40 | 1059-0384 | HS2, BUZZER MTG BRKT | 1 | |
| 41 | 512766 | BUZZER, ULTRA LOUD CONTINUOUS TONE | 1 | |
| 42 | 166114 | TRIAC PCB ASY | 1 | |
| 43 | 176770 | ACM PCB ASY, FBBT | 1 | |
| 44 | 120011 | PCB, 12V PWR 208/230V | 1 | |
| 45 | 120158 | SPACER, NUT .375" | 2 | |
| 46 | 225219 | Harness, timer bar exit, quad | 1 | 2 |
| 47 | 225216 | Day part harness | 1 | |
| Not shown | 225221 | HARNESS IDC 12V & CAN | 1 | |
| Not shown | 166105 | JUMPER, HEAT TRIAC PCB | 1 | |
| Not shown | 225234 | HARNESS MAIN AC – HS2 | 1 | |
| Not shown | 166110 | HARNESS, AC DMC 2X2 | 1 | |
| Not shown | 118027 | Cable, CAT5E Ethernet, Black, 25ft | 1 | |

Table: PL-2 TIMER BAR MODELS (HS2-23-2082/2302/2402 T1R & T2R)

TIMER BAR MODELS (HS2-24-2084/2304/2404 T1R & T2R)

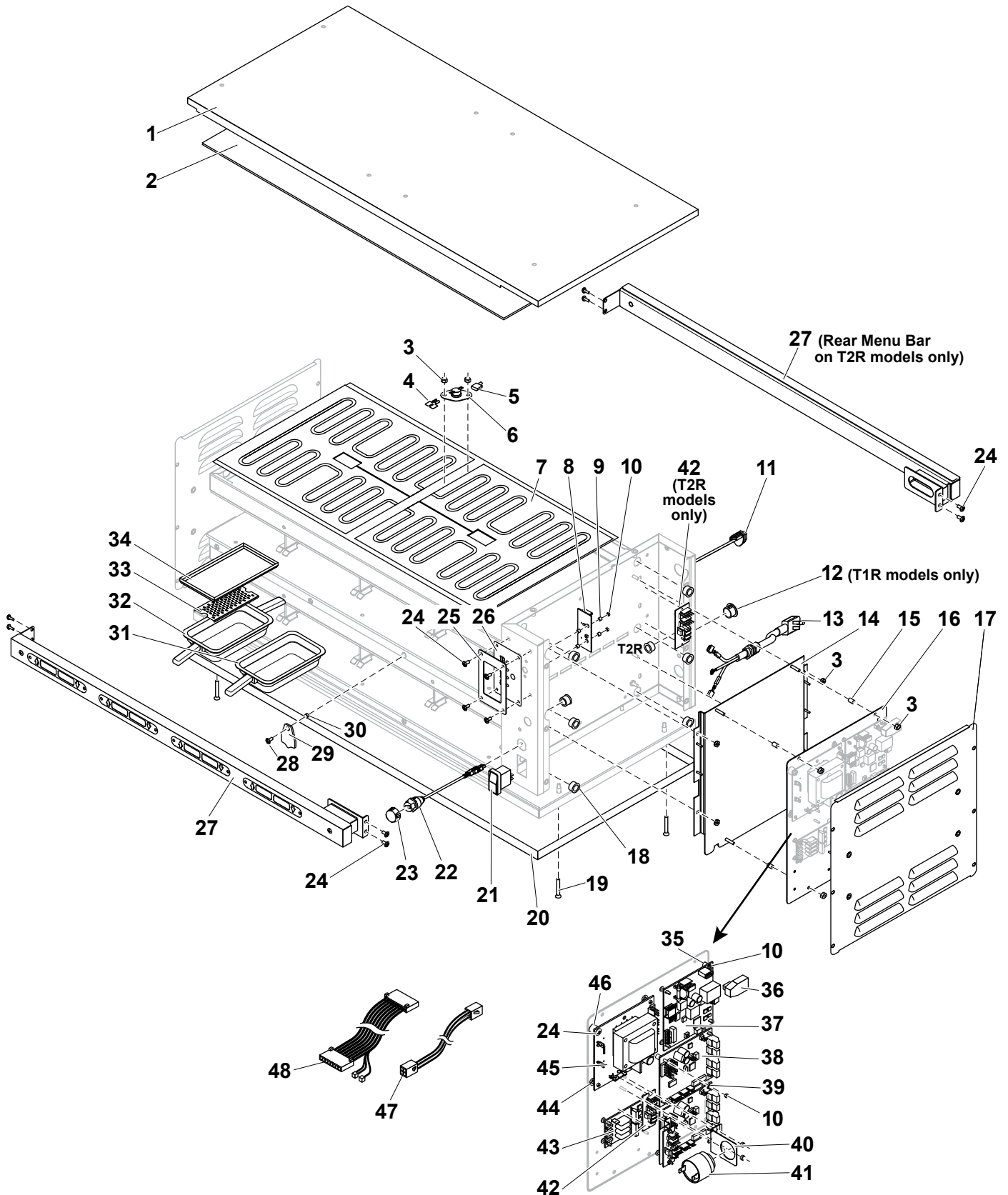


Figure: PL-3 TIMER BAR MODELS (HS2-24-2084/2304/2404 T1R & T2R)

TIMER BAR MODELS (HS2-24-2084/2304/2404 T1R & T2R)

| ITEM | PN | DESCRIPTION | QTY | |
|-----------|-----------|--|--------------|--------------|
| | | | T1R - Models | T2R - Models |
| 1 | 1059-0502 | HS2, TOP 4W RF | 1 | |
| 2 | 225180 | INSULATION 1/8" | 1 | |
| 3 | 155680 | NUT,KEPS 8-32 HEX ZP | 72 | |
| 4 | 512120 | TERMINAL,MULTIPLIER - 34P2156 | 4 | |
| 5 | 222603 | WIRE, JUMPER HS2 HEAT ELEMENT COM. | 4 | |
| 6 | 158312 | THERMOSTAT,HI-LIMIT 300 DEG W/FLANGE | 4 | |
| 7 | 225174 | Heater, 4 Wide 208/240V | 8 | |
| Not shown | 158279 | RTD, 1000 OHM-MEDIUM | A/R | |
| 8 | 225184 | DUKE DAY PART PCB | 1 | |
| 9 | 225171 | SPACER ROUND 1/4" X 1/8" IS DIA .115 | 4 | |
| 10 | 223470 | NUT, 4-40 NYLON LOCKNUT | 6 | 8 |
| 11 | 166111 | MODULAR,JACK IP67 | 1 | |
| 12 | 1059-0723 | HS2,MENU BAR HOLE PLUG | 1 | – |
| 13 | 222170 | CORD POWER 15 AMP 208/240V | 1 | |
| | 160448 | CORD POWER 16 AMP 230V IEC60309 | 1 | |
| 14 | 1059-0435 | HS2, ASY, CTRL VENT DUCT 2H | 1 | |
| 15 | 225168 | SPACER, ALUM .250 OD X .375 LENGTH X #8 SCREW | 4 | |
| 16 | 1059-0537 | HS2,CRTL MTG PLATE 2H PEMS | 1 | |
| 17 | 1059-0445 | ACCESS PANEL 2H (208/240V Units = 2) | 1 or 2 | |
| | 1059-0571 | ACCESS PANEL 2H CE (Control Side of 230V Units) | 1 | |
| 18 | 225173 | HEYCO, SNAP BUSHING OCB-625 | 7 | 8 |
| 19 | 10280050 | SCREW,8-32X1-1/4FL PH SS MACHINE | 4 | |
| 20 | 1059-0339 | HS2, BASE PAN 4W | 1 | |
| 21 | 169629 | SWITCH,SEALED CARLING | 1 | |
| 22 | 225236 | USB Adapter | 1 | |
| 23 | 225237 | USB Cover | 1 | |
| 24 | 279500 | SCREW,8-32X1/2" PTHMS 18-8SS | 61 | |
| 25 | 1059-0394 | HS2, BEZEL DAYPART MYLAR | 1 | |
| 26 | 225165 | MYLAR DAYPART | 1 | |
| 27 | 1059-0714 | HS2, MENU BAR 4W | 1 | 2 |
| | 1059-0210 | HS2 Menu Bar 4W (Replaced by 1059-0714 - 2/16/2017) | 1 | 2 |
| 28 | 223450 | Screw, 8-32 x 3/8" Phil. Truss HD Machine, S/S Nylok Patch | 8 | |
| 29 | 1059-0499 | HS2, PAN STOP COVER | 8 | |
| 30 | 225238 | HS2, Spacer Cover Stop | 8 | |
| Not shown | 600532 | Kit, Cover Stop with 6-32 Nutsert Tool | 1 | |
| 31 | 156602 | Pan, Single Handle | 1 | |
| 32 | 156634 | Pan, Double Handle | 1 | |
| 33 | E030951 | TRIVET, METAL, 1/3 SIZE PAN | 6 | |
| 34 | 1059-0498 | HS2 Pan Cover | 1 | |
| 35 | 166100 | SPACER,TUBE NYLON 0.25OD X 0.125ID X 0.375H | 1 | |
| 36 | 166184 | USB. 2.0 MALE TO FEMALE RT. ANGLE ADAPTER | 1 | |
| 37 | 176770 | ACM PCB ASY,FBBT | 1 | |
| 38 | 600517 | Kit, Service, PCB, IO3, HS2 | 2 | |
| 39 | 166102 | WASHER,0.375OD X 0.13ID X 0.062THK | 1 | |
| 40 | 1059-0384 | HS2, BUZZER MTG BRKT | 1 | |
| 41 | 512766 | BUZZER, ULTRA LOUD CONTINUOUS TONE | 1 | |
| 42 | 225181 | ASY, TIMER BAR 5V POWER PCB | 1 | 2 |
| 43 | 166114 | TRIAC PCB ASY | 2 | |
| 44 | 166101 | SUPPORT,LOCK-IN PC | 15 | |
| 45 | 225185 | PCB, 12V PWR 5A 208/230V | 1 | |
| 46 | 120158 | SPACER,NUT .375" | 2 | |
| 47 | 225219 | Harness, timer bar exit, quad | 1 | |
| 48 | 225216 | Day part harness | 1 | |
| Not shown | 225221 | HARNESS IDC 12V & CAN | 1 | |
| Not shown | 166105 | JUMPER,HEAT TRIAC PCB | 1 | |
| Not shown | 225234 | HARNESS MAIN AC – HS2 | 1 | |
| Not shown | 166110 | HARNESS,AC DMC 2X2 | 1 | |
| Not shown | 118027 | Cable, CAT5E Ethernet, Black, 25ft | 1 | |

Table: PL-3 TIMER BAR MODELS (HS2-24-2084/2304/2404 T1R & T2R)

TIMER BAR MODELS (HS2-34-2086/2306/2406 T1R & T2R)

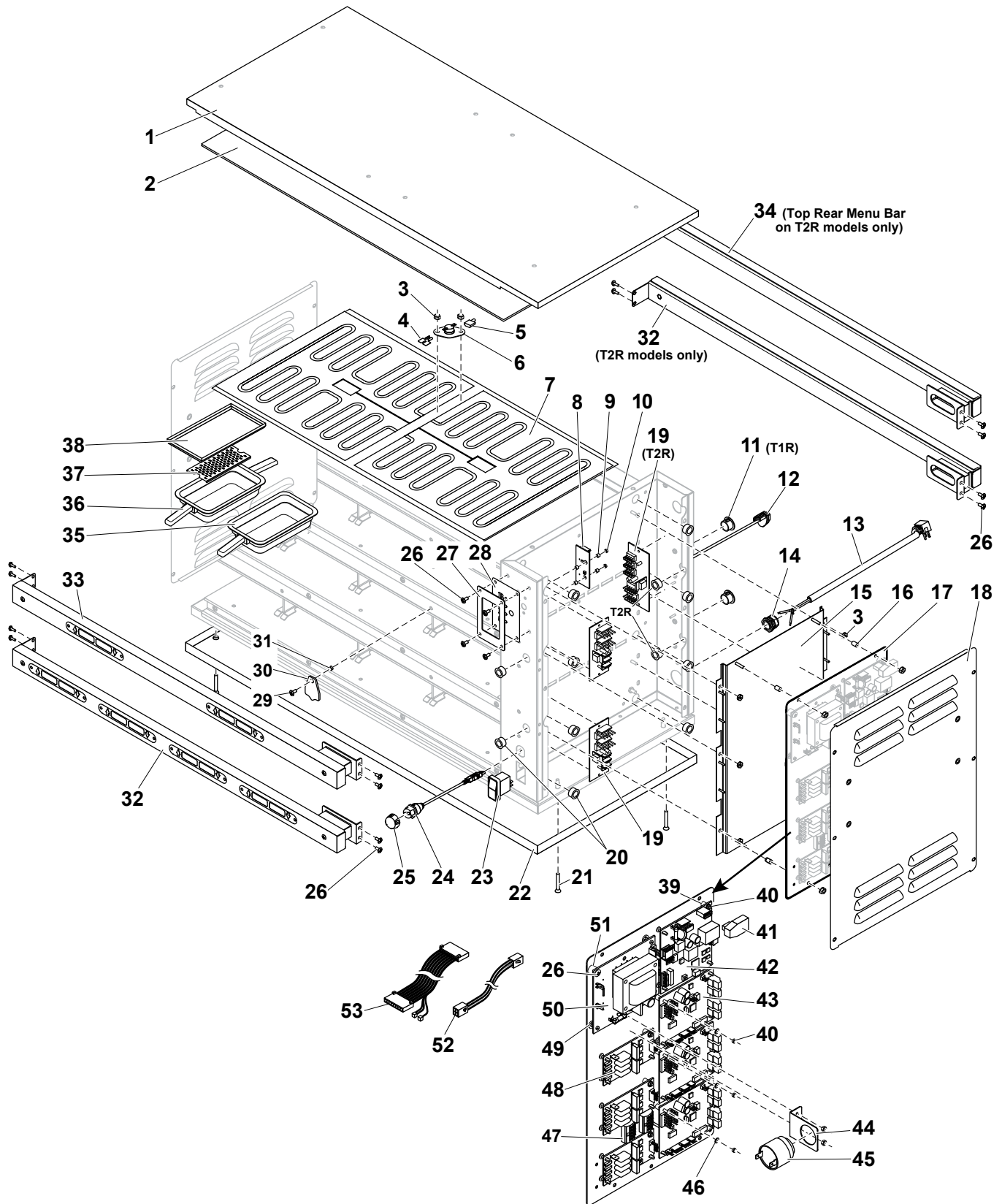


Figure: PL-4 TIMER BAR MODELS (HS2-34-2086/2306/2406 T1R & T2R)

TIMER BAR MODELS (HS2-34-2086/2306/2406 T1R & T2R)

| ITEM | PN | DESCRIPTION | QTY | |
|-----------|-----------|--|----------|----------|
| | | | T1R MDLS | T2R MDLS |
| 1 | 1059-0502 | HS2, TOP 4W RF | | 1 |
| 2 | 225180 | INSULATION 1/8" | | 1 |
| 3 | 155680 | NUT,KEPS 8-32 HEX ZP | | 82 |
| 4 | 512120 | TERMINAL,MULTIPLIER - 34P2156 | | 6 |
| 5 | 222603 | WIRE, JUMPER HS2 HEAT ELEMENT COM. | | 6 |
| 6 | 158312 | THERMOSTAT,HI-LIMIT 300 DEG W/FLANGE | | 6 |
| 7 | 225174 | Heater, 4 Wide 208/240V | | 12 |
| Not shown | 158279 | RTD, 1000 OHM-MEDIUM | | A/R |
| 8 | 225184 | DUKE DAY PART PCB | | 1 |
| 9 | 225171 | SPACER ROUND 1/4" X 1/8" IS DIA .115 | | 28 |
| 10 | 223470 | NUT, 4-40 NYLON LOCKNUT | 23 | 27 |
| 11 | 1059-0723 | HS2,MENU BAR HOLE PLUG | 2 | – |
| 12 | 166111 | MODULAR,JACK IP67 | | 1 |
| 13 | 166070 | CORD POWER 20 AMP 208/240 | | 1 |
| | 160448 | CORD POWER 16 AMP 230V IEC60309 | | 1 |
| 14 | 160486 | STRAIN RELIEF,CORD | | 1 |
| 15 | 1059-0420 | HS2, ASY, VENT DUCT | | 1 |
| 16 | 225168 | SPACER, ALUM .250 OD X .375 LENGTH X #8 SCREW | | 4 |
| 17 | 1059-0536 | HS2,CRTL MTG PLATE 3H PEMS | | 1 |
| 18 | 1059-0379 | HS2, ASY ACCESS PANEL 3H (208/240V Units = 2) | | 1 or 2 |
| | 1059-0546 | ACCESS PANEL 3H CE (Control Side of 230V Units) | | 1 |
| 19 | 225181 | ASY, TIMER BAR 5V POWER PCB | 2 | 3 |
| 20 | 225173 | HEYCO, SNAP BUSHING OCB-625 | 10 | 12 |
| 21 | 10280050 | SCREW,8-32X1-1/4FL PH SS MACHINE | | 4 |
| 22 | 1059-0339 | HS2, BASE PAN 4W | | 1 |
| 23 | 169629 | SWITCH,SEALED CARLING | | 1 |
| 24 | 225236 | USB Adapter | | 1 |
| 25 | 225237 | USB Cover | | 1 |
| 26 | 279500 | SCREW,8-32X1/2" PTHMS 18-8SS | | 76 |
| 27 | 1059-0394 | HS2, BEZEL DAYPART MYLAR | | 1 |
| 28 | 225165 | MYLAR DAYPART | | 1 |
| 29 | 223450 | SCREW, 8-32X3/8" PHIL TRUSS HD MACHINE, S/S NYLOK PATCH | | 12 |
| 30 | 1059-0499 | HS2, PAN STOP COVER | | 12 |
| 31 | 225238 | HS2, Spacer Cover Stop | | 12 |
| Not Shown | 600532 | Kit, Cover Stop with 6-32 Nutsert Tool | | 1 |
| 32 | 1059-0714 | HS2, MENU BAR 4W | 1 | 2 |
| | 1059-0210 | HS2 Menu Bar 4W (Replaced by 1059-0714 - 2/16/2017) | 1 | 2 |
| 33 | 1059-0713 | HS2, TOP MENU BAR 4W | 1 | – |
| | 1059-0209 | HS2, Top Menu Bar 4W (Replaced by 1059-0713 - 2/16/2017) | 1 | – |
| 34 | 1059-0726 | HS2, TOP REAR MENU BAR 4W | – | 1 |
| | 1059-0475 | HS2, Top Rear Menu Bar 4W (Replaced by 1059-0726 - 2/16/2017) | – | 1 |
| 35 | 156602 | Pan, Single Handle | | 1 |
| 36 | 156634 | Pan, Double Handle | | 1 |
| 37 | E030951 | TRIVET, METAL, 1/3 SIZE PAN | | 4 |
| 38 | 1059-0498 | HS2,PAN COVER | | 8 |
| 39 | 166100 | SPACER,TUBE NYLON 0.25OD X 0.125ID X 0.375H | | 1 |
| 40 | 223470 | NUT, 4-40 NYLON LOCKNUT | | 7 |
| 41 | 166184 | USB. 2.0 MALE TO FEMALE RT. ANGLE ADAPTER | | 1 |
| 42 | 176770 | ACM PCB ASY,FBBT | | 1 |
| 43 | 600517 | Kit, Service, PCB, IO3, HS2 | | 3 |
| 44 | 1059-0384 | HS2, BUZZER MTG BRKT | | 1 |
| 45 | 512766 | BUZZER, ULTRA LOUD CONTINUOUS TONE | | 1 |
| 46 | 166102 | WASHER,0.375OD X 0.13ID X 0.062THK | | 1 |
| 47 | 212106 | CONNECTOR WAGO 5 CONDUCTOR 222-415 | | 2 |
| 48 | 166114 | TRIAC PCB ASY | | 3 |
| 49 | 166101 | SUPPORT,LOCK-IN PC | | 1 |
| 50 | 225185 | PCB, 12V PWR 5A 208/230V | | 1 |
| 51 | 120158 | SPACER,NUT .375" | | 2 |
| 52 | 225219 | Harness, timer bar exit, quad | 2 | 3 |
| 53 | 225216 | Day part harness | | 1 |
| Not shown | 225221 | HARNESS IDC 12V & CAN | | 1 |
| Not shown | 166105 | JUMPER,HEAT TRIAC PCB | | 3 |
| Not shown | 225234 | HARNESS MAIN AC – HS2 | | 1 |
| Not shown | 166109 | HARNESS,AC DMC 2X4 | | 1 |
| Not shown | 166104 | JUMPER,IO TO IO | – | 1 |
| Not shown | 225220 | Harness, timer bar exit, dual | – | 1 |
| Not shown | 118027 | Cable, CAT5E Ethernet, Black, 25ft | | 1 |

Table: PL-4 TIMER BAR MODELS (HS2-34-2086/2306/2406 T1R & T2R)

TIMER BAR MODELS (HS2-42-2084/2304/2404 T1R & T2R)

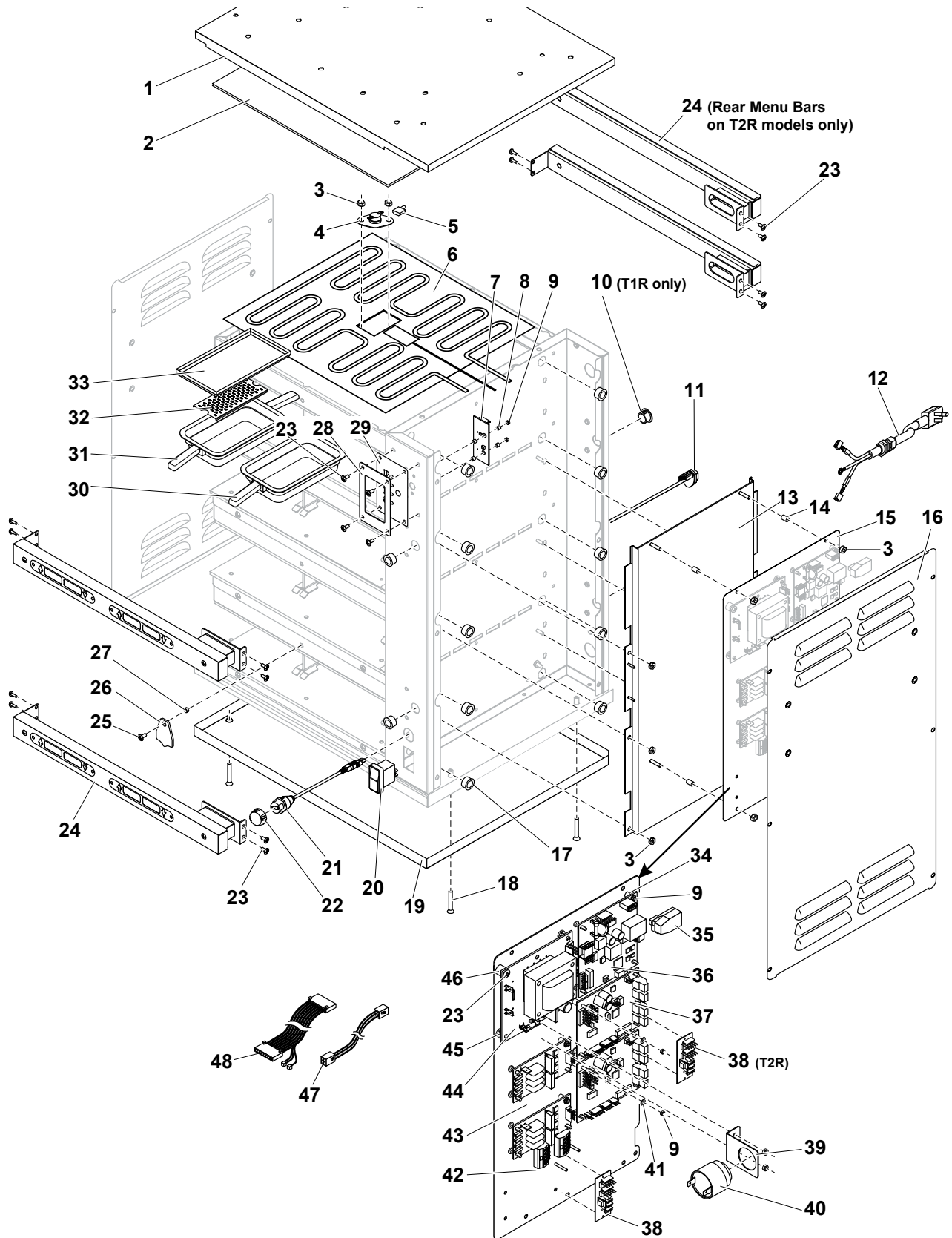


Figure: PL-5 TIMER BAR MODELS (HS2-42-2084/2304/2404 T1R & T2R)

TIMER BAR MODELS (HS2-42-2084/2304/2404 T1R & T2R)

| ITEM | PN | DESCRIPTION | QTY | |
|-----------|-----------|---|--------------|------------|
| | | | T1R - Models | T2R Models |
| 1 | 1059-0521 | HS2, TOP 2W RF | | 1 |
| 2 | 1059-0528 | HS2, INSULATION 1/8" 2W | | 1 |
| 3 | 155680 | NUT, KEPS 8-32 HEX ZP | | 107 |
| 4 | 158312 | THERMOSTAT, HI-LIMIT 300 DEG W/FLANGE | | 8 |
| 5 | 222603 | WIRE, JUMPER HS2 HEAT ELEMENT COM. | | 8 |
| 6 | 225225 | Heater, 2 Wide 208/240V | | 8 |
| Not shown | 158279 | RTD, 1000 OHM-MEDIUM | | A/R |
| 7 | 225184 | DUKE DAY PART PCB | | 1 |
| 8 | 225171 | SPACER ROUND 1/4" X 1/8" IS DIA .115 | | 12 |
| 9 | 223470 | NUT, 4-40 NYLON LOCKNUT | 17 | 19 |
| 10 | 1059-0723 | HS2, MENU BAR HOLE PLUG | 2 | - |
| 11 | 166111 | MODULAR, JACK IP67 | | 1 |
| 12 | 222170 | CORD POWER 15 AMP 208/240V | | 1 |
| | 160448 | CORD POWER 16 AMP 230V IEC60309 | | 1 |
| 13 | 1059-0531 | HS2, ASY, VENT DUCT 4H | | 1 |
| 14 | 225168 | SPACER, ALUM .250 OD X .375 LENGTH X #8 SCREW | | 4 |
| 15 | 1059-0536 | HS2, CRTL MTG PLATE 3H PEMS | | 1 |
| 16 | 1059-0496 | ACCESS PANEL 4H (208/240V Units = 2) | | 1 or 2 |
| | 1059-0574 | ACCESS PANEL 4H CE (Control Side of 230V Units) | | 1 |
| 17 | 225173 | HEYCO, SNAP BUSHING OCB-625 | 12 | 14 |
| 18 | 10280050 | SCREW, 8-32X1-1/4 FL PH SS MACHINE | | 4 |
| 19 | 1059-0456 | HS2, BASE PAN 2W | | 1 |
| 20 | 169629 | SWITCH, SEALED CARLING | | 1 |
| 21 | 225236 | USB Adapter | | 1 |
| 22 | 225237 | USB Cover | | 1 |
| 23 | 279500 | SCREW, 8-32X1/2" PTHMS 18-8SS | | 70 |
| 24 | 1059-0750 | HS2, MENU BAR 2W | 2 | 4 |
| | 1059-0474 | HS2 Menu Bar 2W (Replaced by 1059-0750 - 3/7/2017) | 2 | 4 |
| 25 | 223450 | Screw, 8-32 x 3/8" Phil. Truss Hd. Machine, S/S Nylok Patch | | 8 |
| 26 | 1059-0499 | HS2, PAN STOP COVER | | 8 |
| 27 | 225238 | HS2, Spacer Cover Stop | | 8 |
| Not Shown | 600532 | Kit, Cover Stop with 6-32 Nutsert Tool | | 1 |
| 28 | 1059-0394 | HS2, BEZEL DAYPART MYLAR | | 1 |
| 29 | 225165 | MYLAR DAYPART | | 1 |
| 30 | 156602 | Pan, Single Handle | | 1 |
| 31 | 156634 | Pan, Double Handle | | 1 |
| 32 | E030951 | TRIVET, METAL, 1/3 SIZE PAN | | 2 |
| 33 | 1059-0498 | HS2, PAN COVER | | 6 |
| 34 | 166100 | SPACER, TUBE NYLON 0.250D X 0.125ID X 0.375H | | 1 |
| 35 | 166184 | USB. 2.0 MALE TO FEMALE RT. ANGLE ADAPTER | | 1 |
| 36 | 176770 | ACM PCB ASY, FBBT | | 1 |
| 37 | 600517 | Kit, Service, PCB, IO3, HS2 | | 2 |
| 38 | 225181 | ASY, TIMER BAR 5V POWER PCB | 1 | 2 |
| 39 | 1059-0384 | HS2, BUZZER MTG BRKT | | 1 |
| 40 | 512766 | BUZZER, ULTRA LOUD CONTINUOUS TONE | | 1 |
| 41 | 166102 | WASHER, 0.375OD X 0.13ID X 0.062THK | | 2 |
| 42 | 212106 | CONNECTOR WAGO 5 CONDUCTOR 222-415 | | 2 |
| 43 | 166114 | TRIAC PCB ASY | | 2 |
| 44 | 120011 | PCB, 12V PWR 208/230V | | 1 |
| 45 | 166101 | SUPPORT, LOCK-IN PC | | 1 |
| 46 | 120158 | SPACER, NUT .375" | | 2 |
| 47 | 225219 | Harness, timer bar exit, quad | 2 | 4 |
| 48 | 225216 | Day part harness | | 1 |
| Not shown | 225221 | HARNESS IDC 12V & CAN | | 1 |
| Not shown | 166105 | JUMPER, HEAT TRIAC PCB | | 2 |
| Not shown | 225234 | HARNESS MAIN AC – HS2 | | 1 |
| Not shown | 225255 | HS2 AC 4X2 | | 1 |
| Not shown | 118027 | Cable, CAT5E Ethernet, Black, 25ft | | 1 |

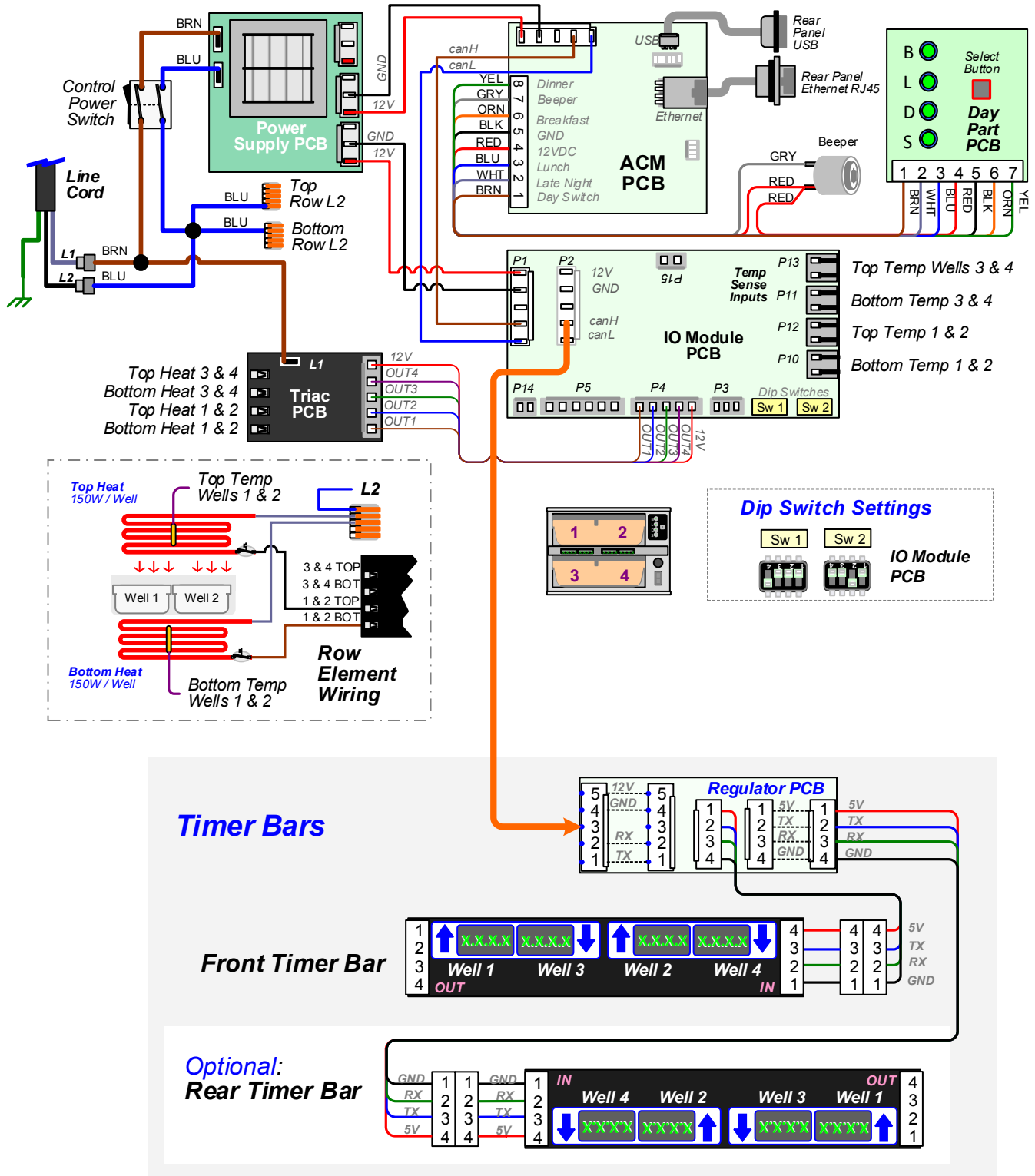
Table: PL-5 TIMER BAR MODELS (HS2-42-2084/2304/2404 T1R & T2R)

WIRING DIAGRAMS

HS2-22, 2-Zone Models

WIRING DIAGRAM 2x2 HS2

225247 Rev. C 6/1/17

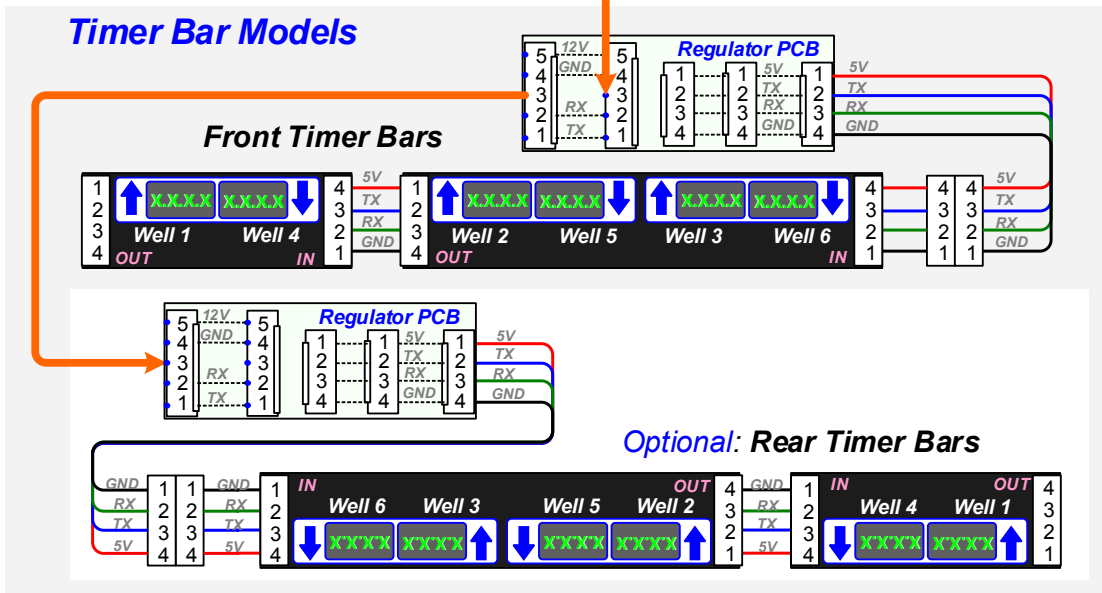
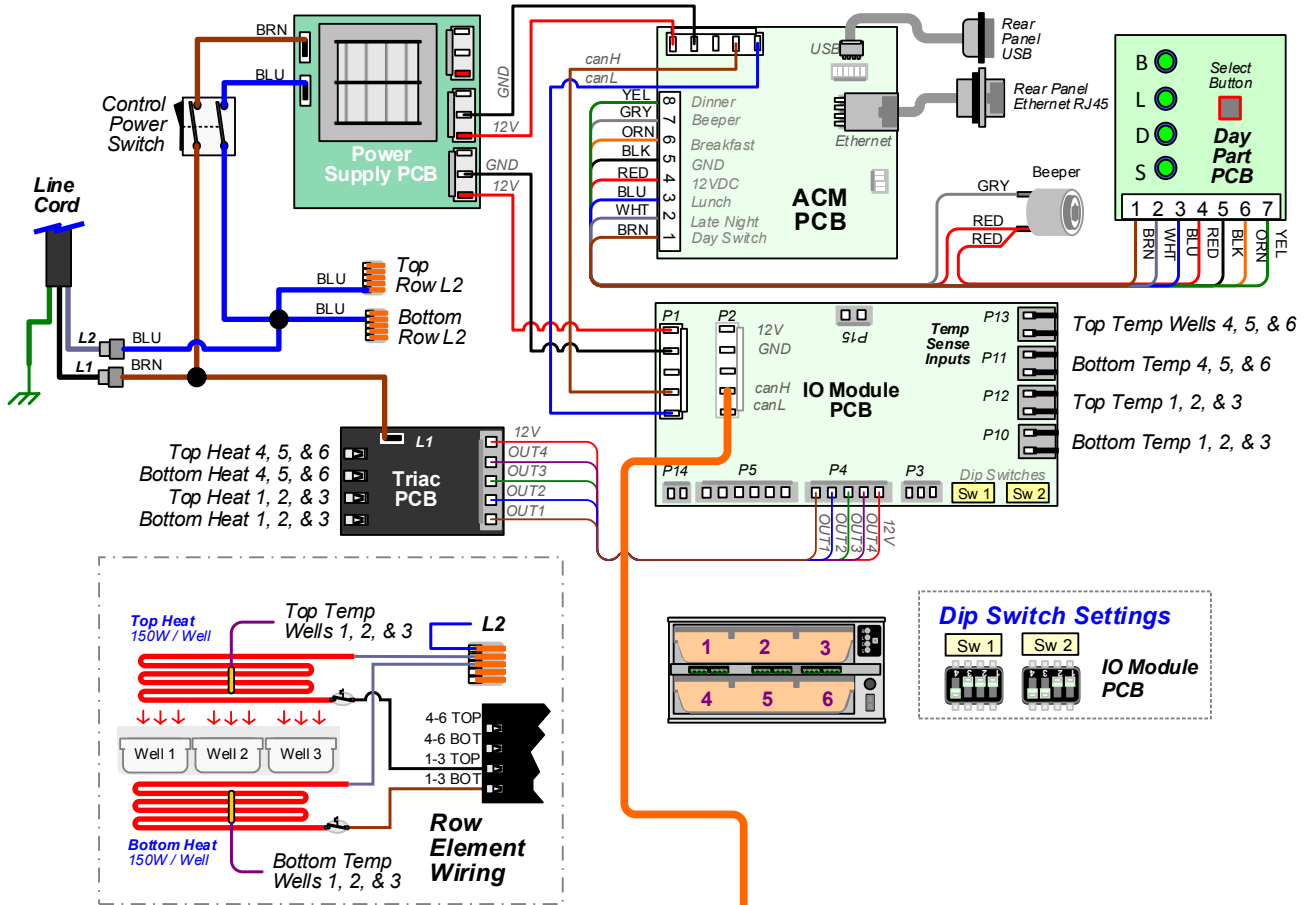


WIRING DIAGRAMS

HS2-23, 2-Zone Models

WIRING DIAGRAM 2x3 HS2

225246 Rev. B 6/1/17

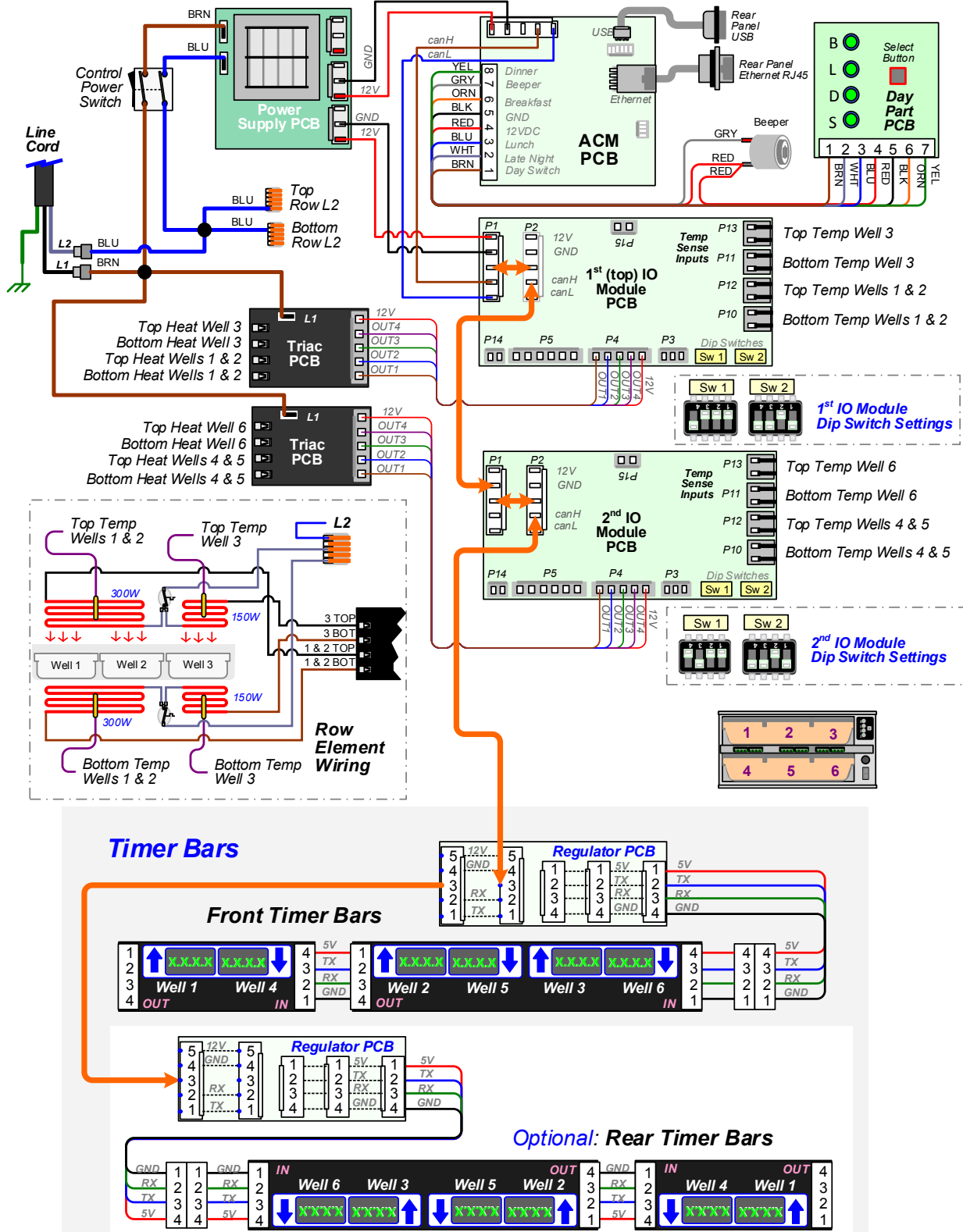


WIRE DIAGRAM

HS2-23, 4-Zone Models

Wire Diagram - HS2 Zoned 2 x 3

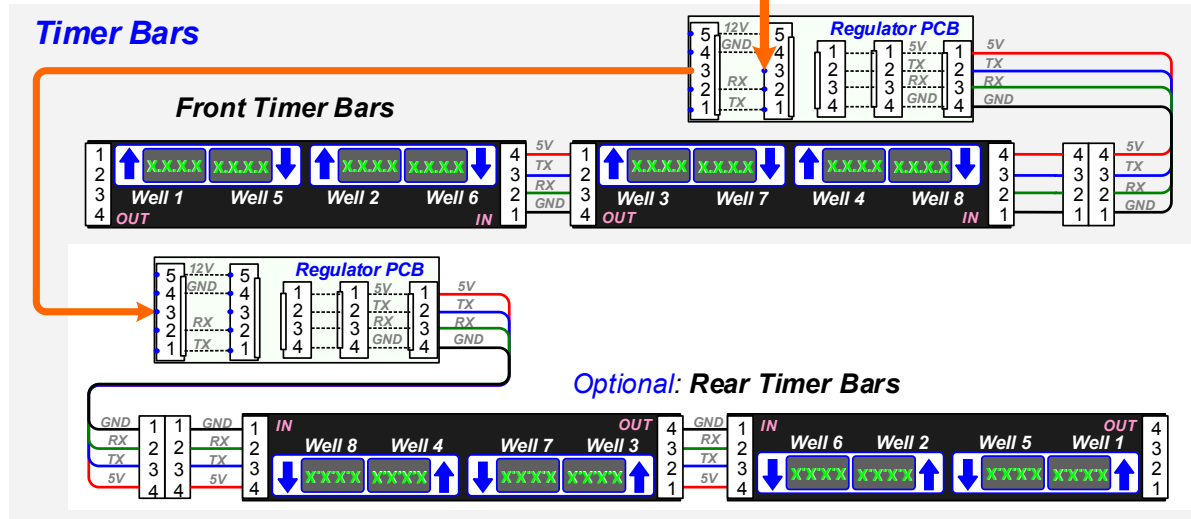
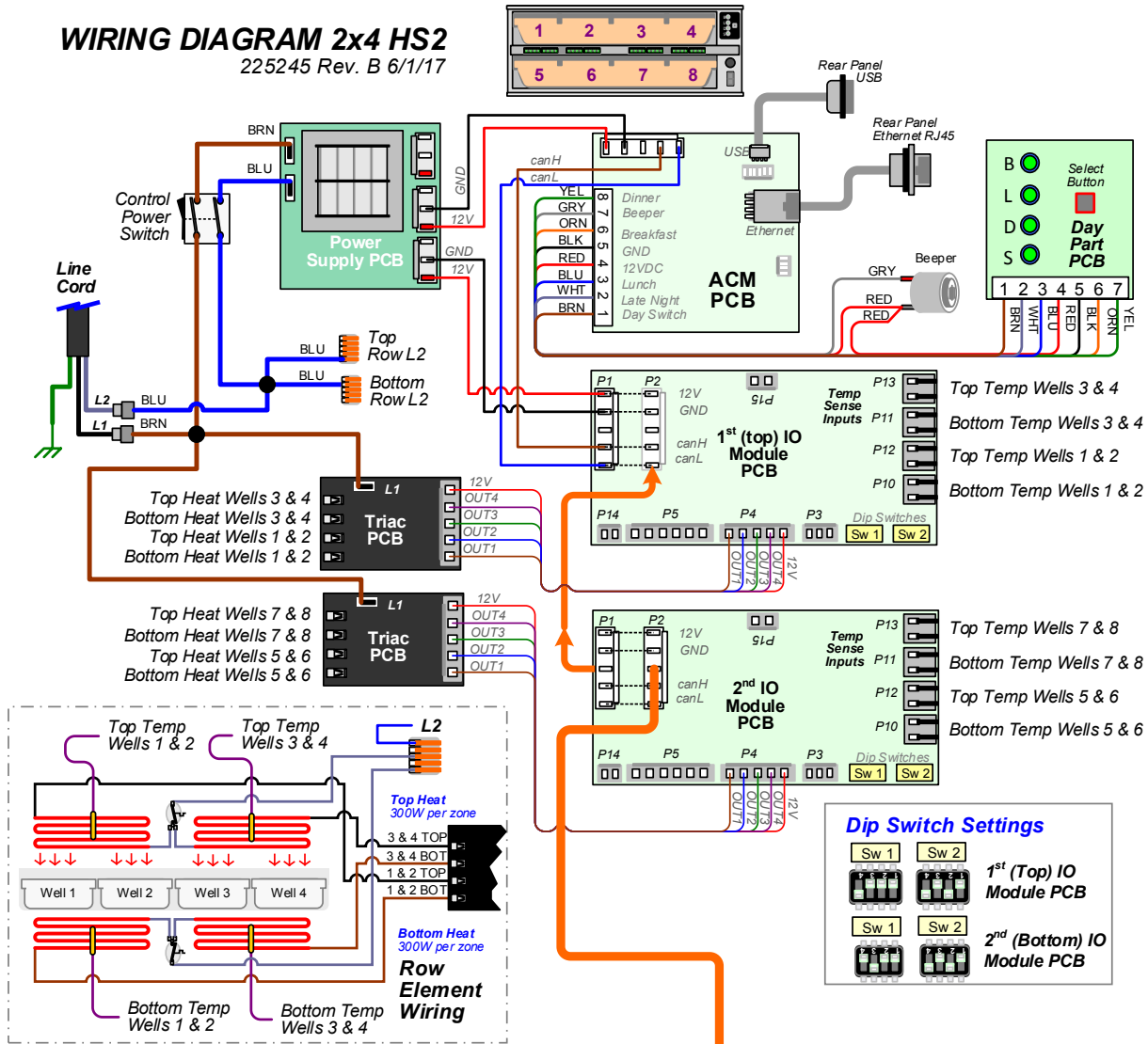
ELC0131 Rev. B (2x3_4z) 6/1/17



WIRE DIAGRAM

HS2-24, 4-Zone Models

WIRING DIAGRAM 2x4 HS2
225245 Rev. B 6/1/17

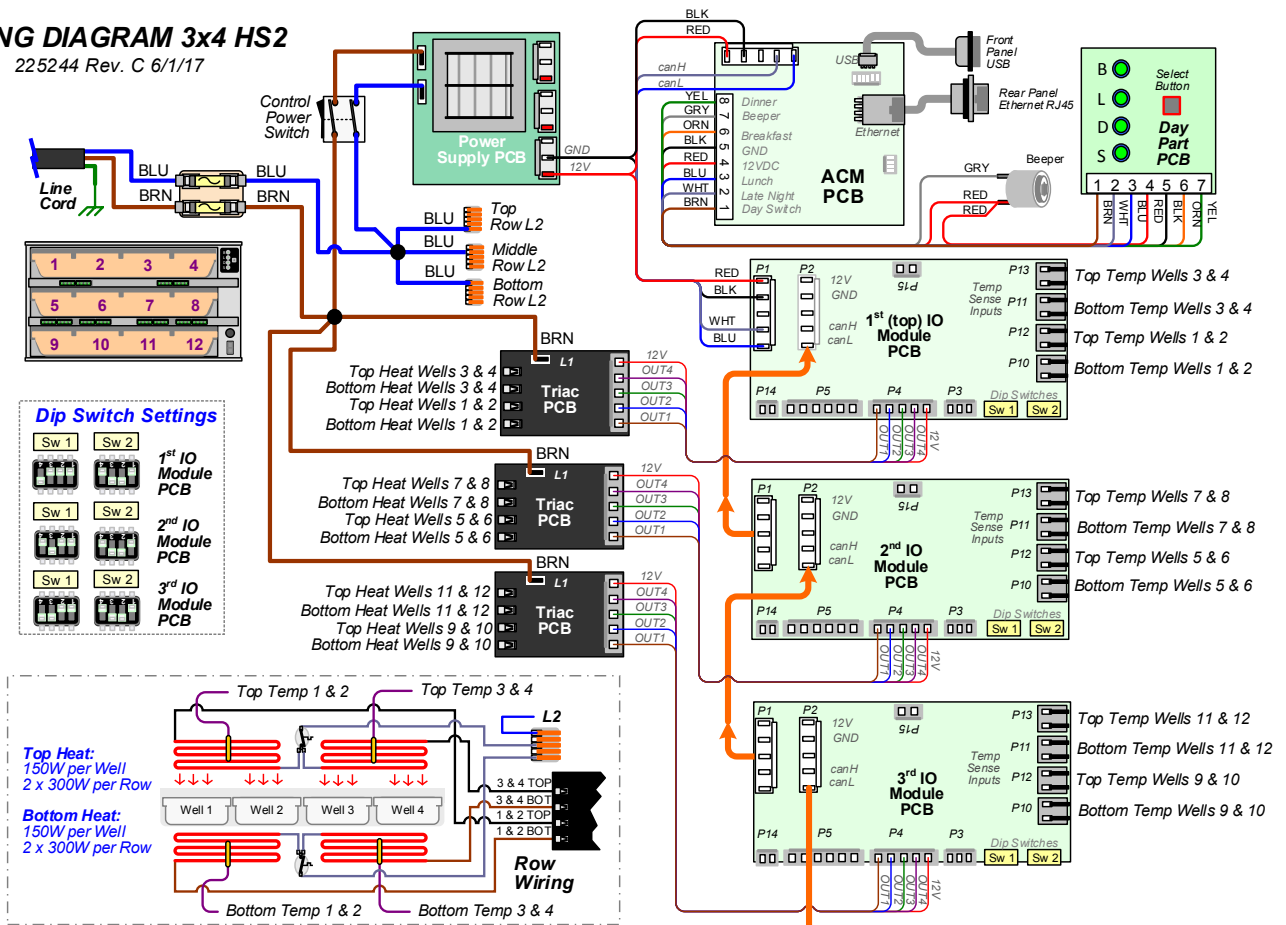


WIRE DIAGRAM

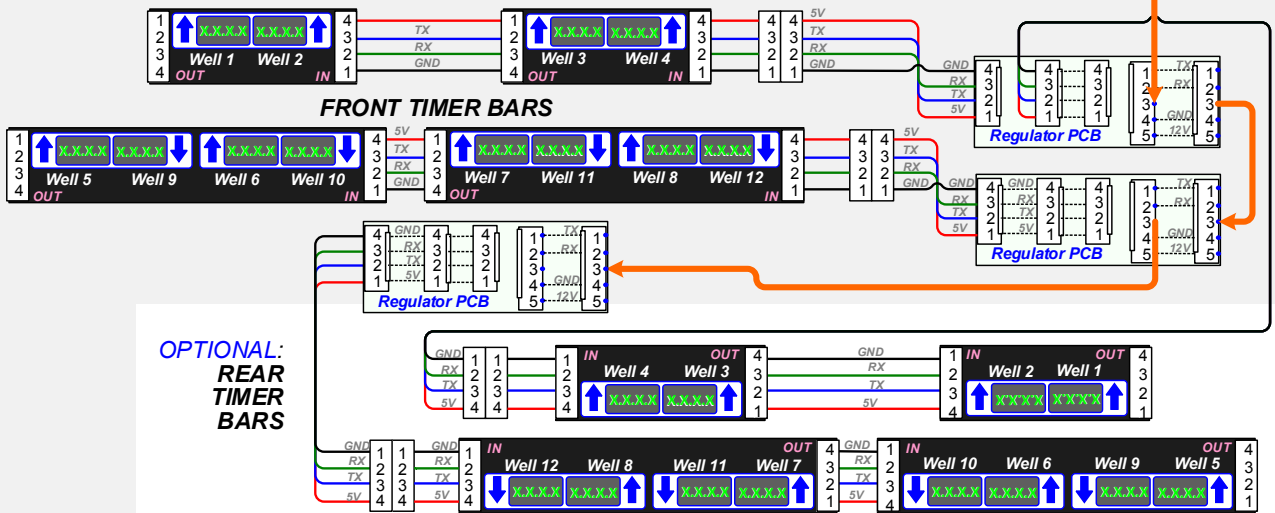
HS2-34, 6-Zone Models

WIRING DIAGRAM 3x4 HS2

225244 Rev. C 6/1/17



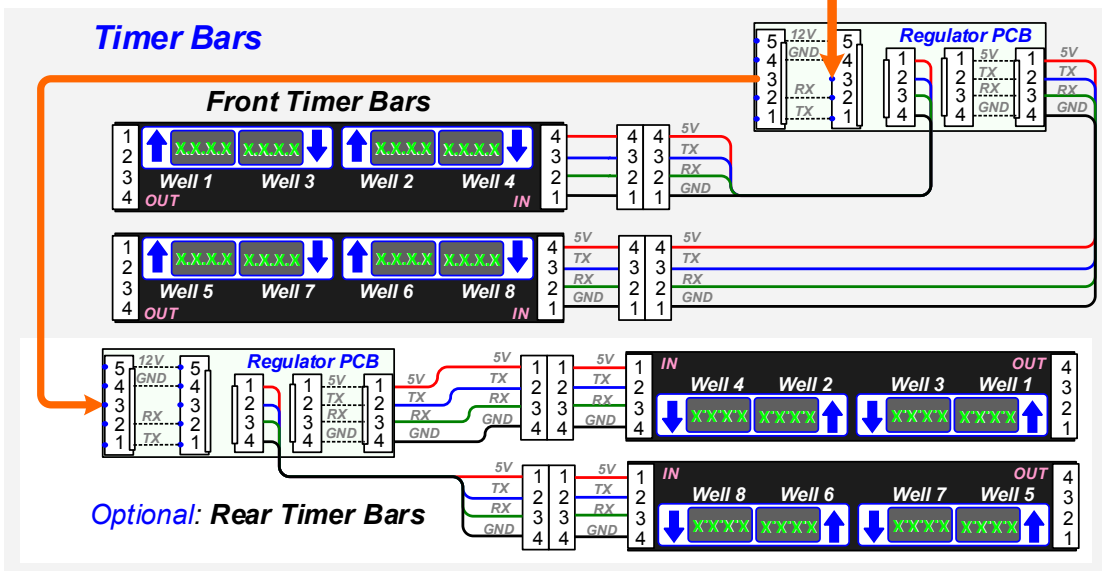
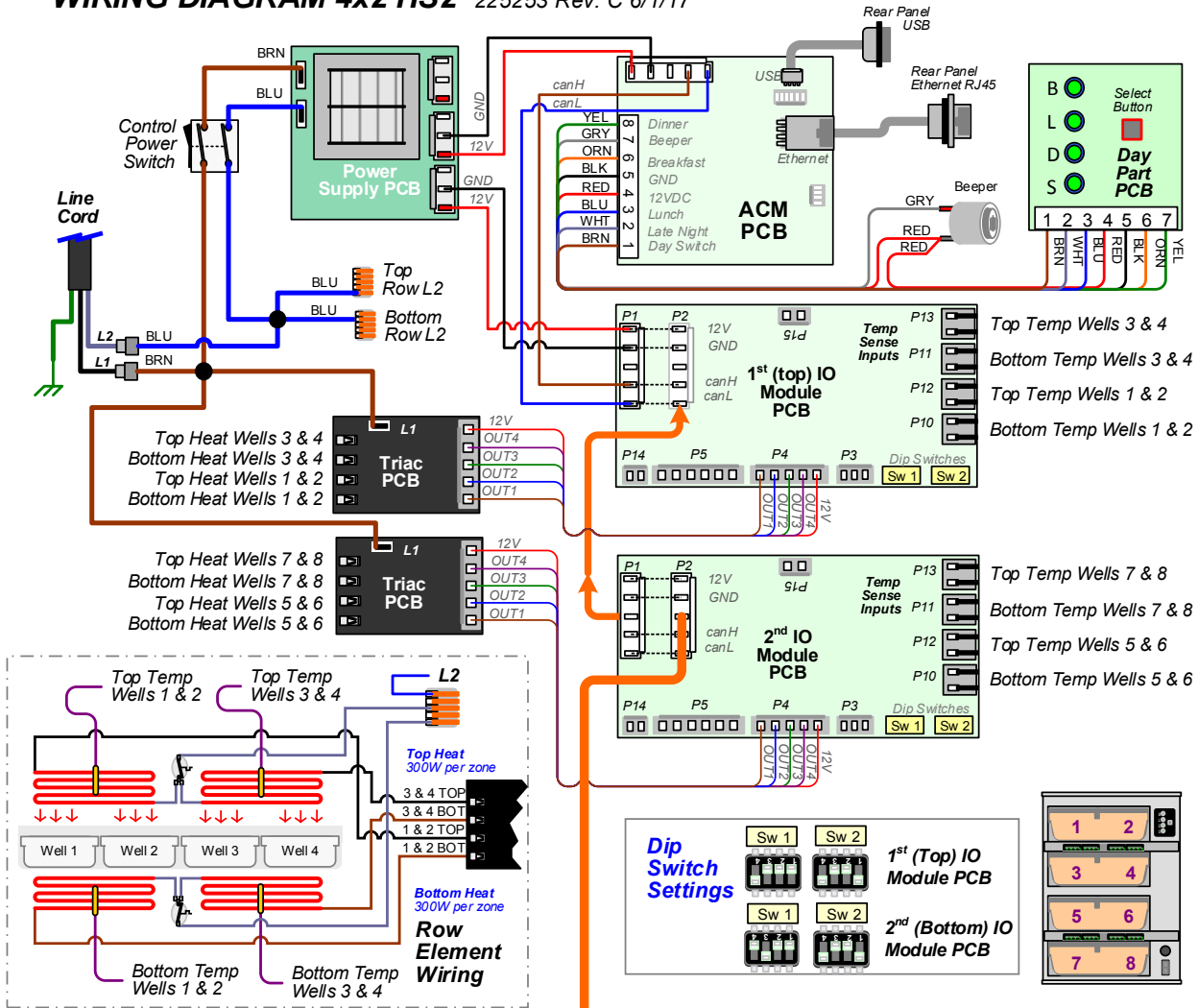
Timer Bars



WIRE DIAGRAM

HS2-42, 4-Zone Models

WIRING DIAGRAM 4x2 HS2 225253 Rev. C 6/1/17

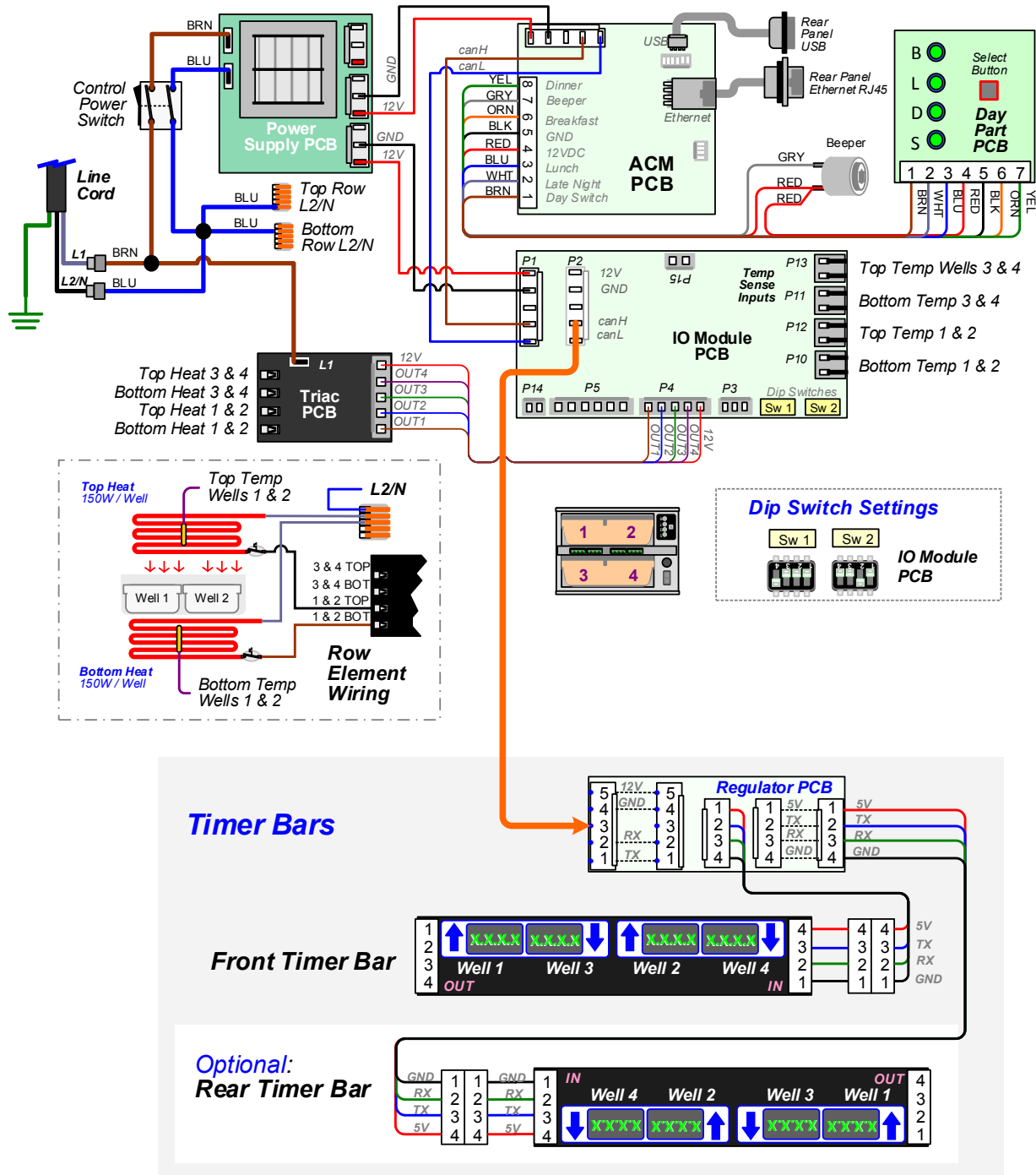


WIRE DIAGRAM

HS2-22, 2-Zone CE Models

WIRING DIAGRAM 2x2 HS2 - CE

ELC0229 Rev. A 9/22/17

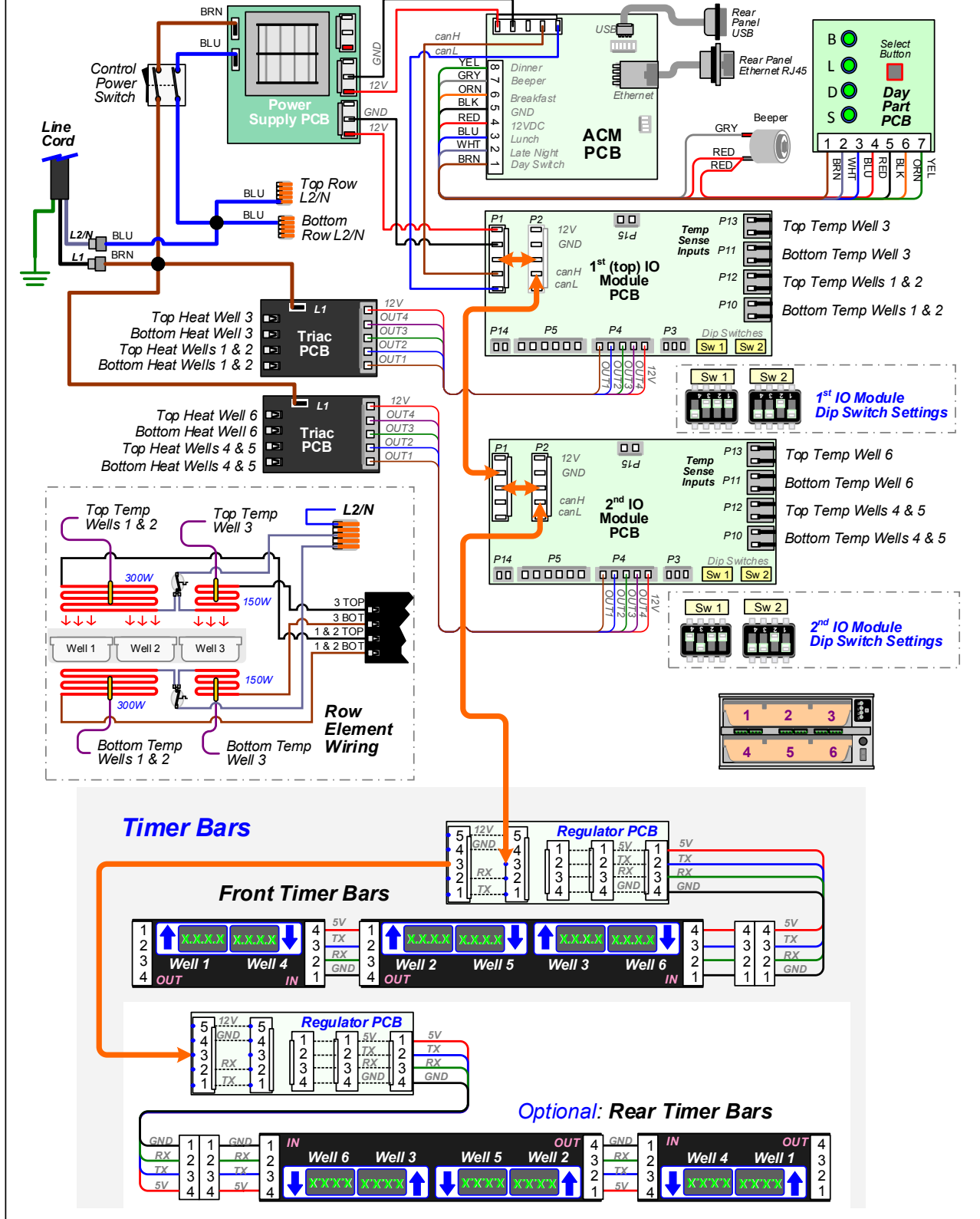


WIRE DIAGRAM

HS2-23, 4-Zone CE Models

Wire Diagram - HS2 Zoned 2 x 3 - C€

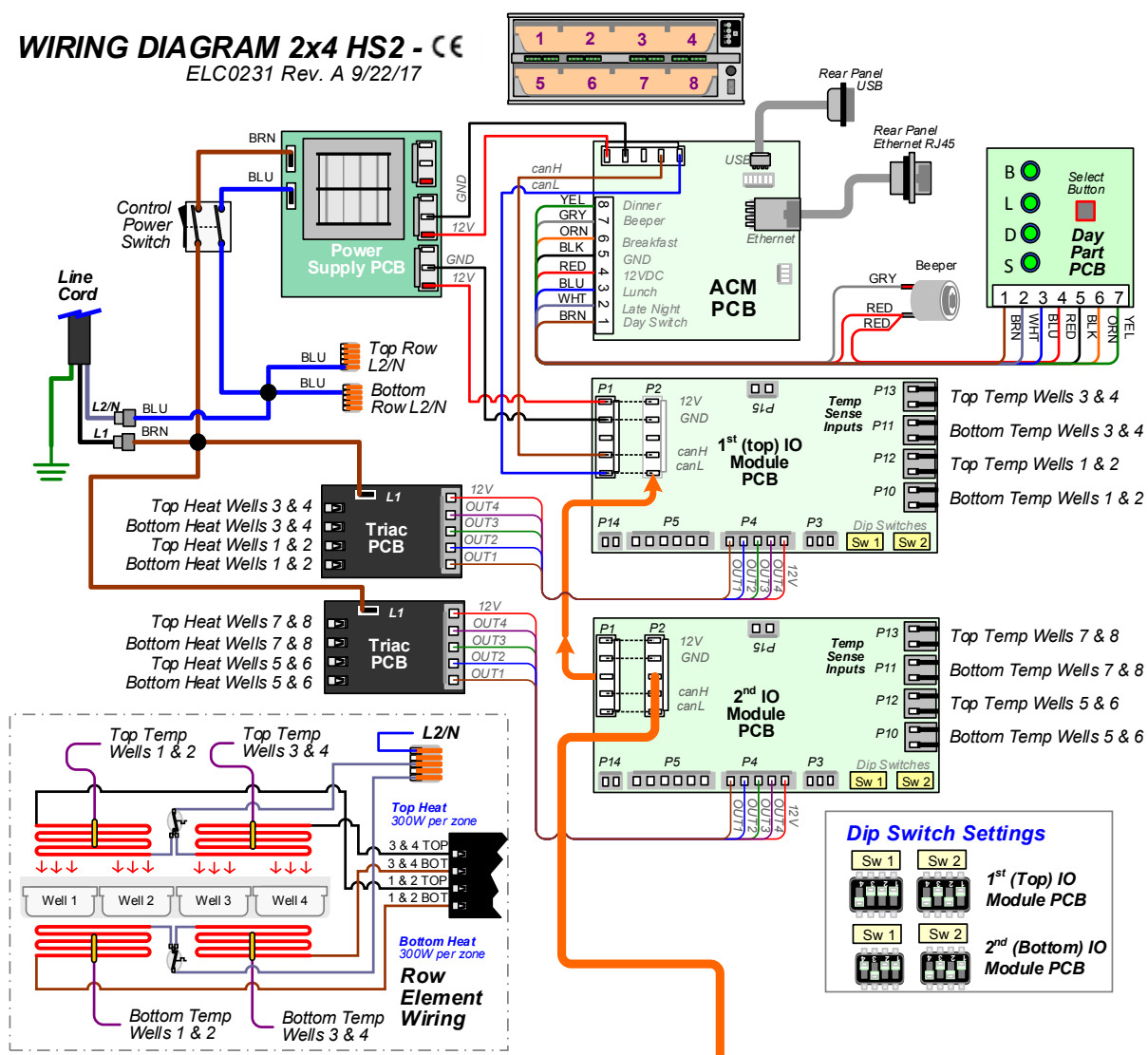
ELC0230 Rev. A (2x3_4z) 9/27/17



WIRE DIAGRAM

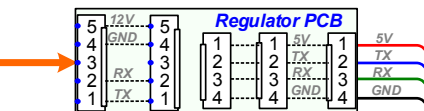
HS2-24, 4-Zone CE Models

WIRING DIAGRAM 2x4 HS2 - CE
ELC0231 Rev. A 9/22/17



Timer Bars

Front Timer Bars



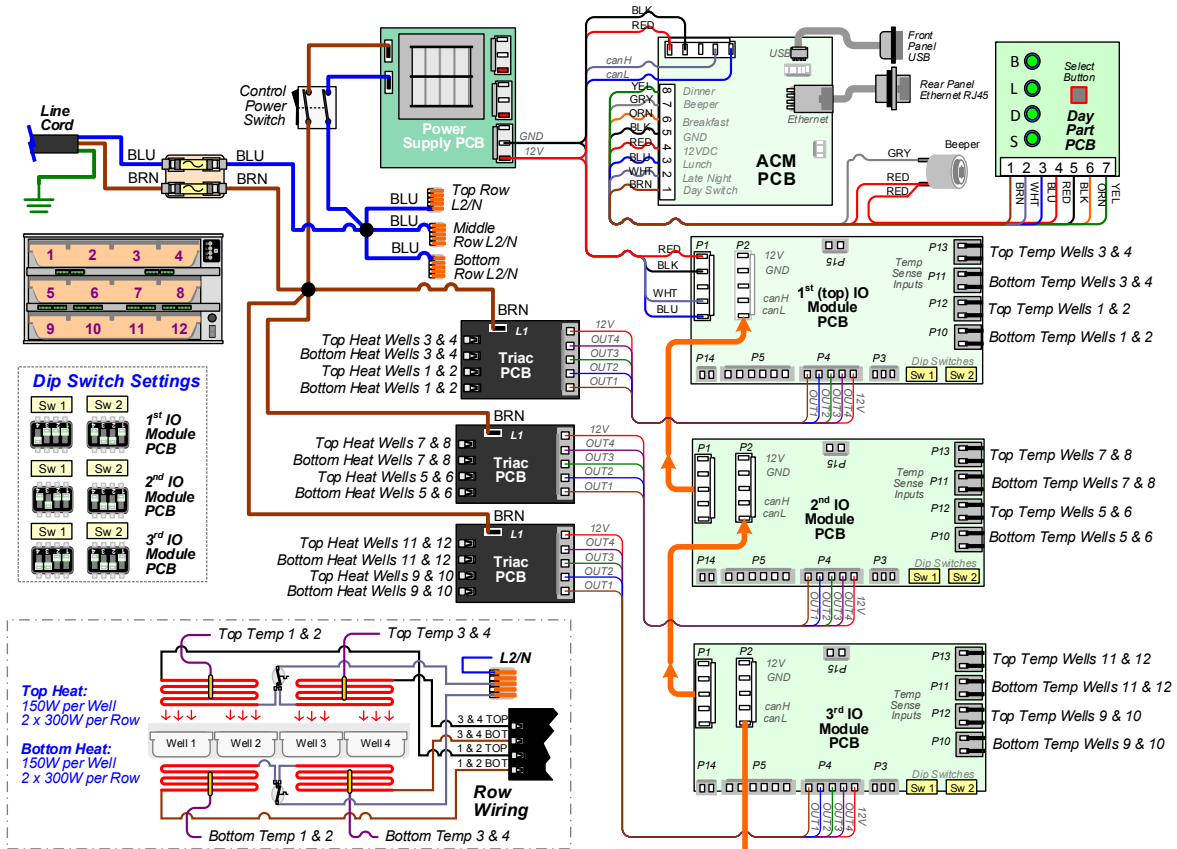
Optional: Rear Timer Bars



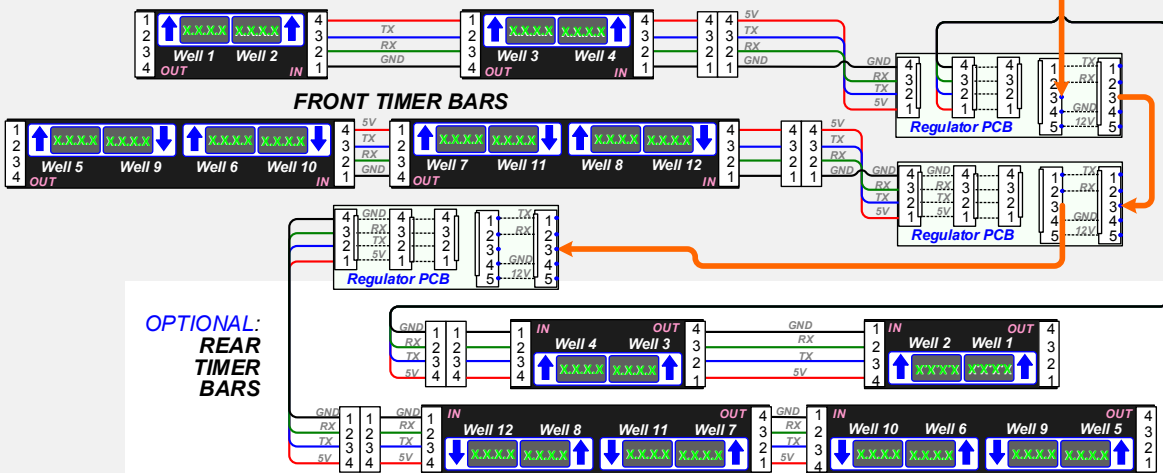
WIRE DIAGRAM

HS2-34, 6-Zone CE Models

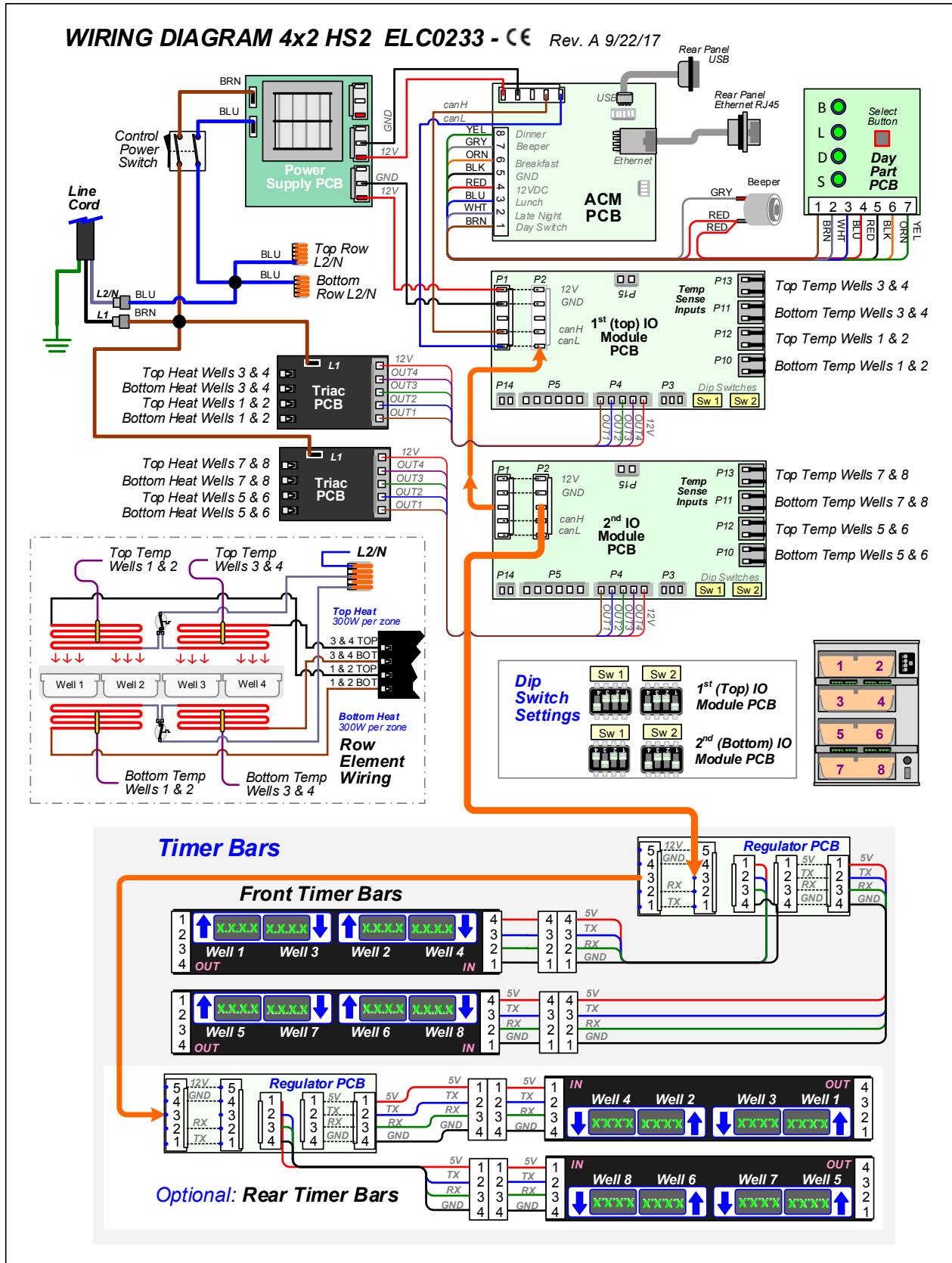
WIRING DIAGRAM 3x4 HS2 - CE
ELC0232 Rev. A 9/22/17



Timer Bars



WIRE DIAGRAM HS2-42, 4-Zone CE Models



NOTES



Duke Manufacturing Company

**2305 N. Broadway
St. Louis, MO 63102
Phone: 314-231-1130
Toll Free: 1-800-735-3853
Fax: 314-231-5074
www.dukemfg.com**