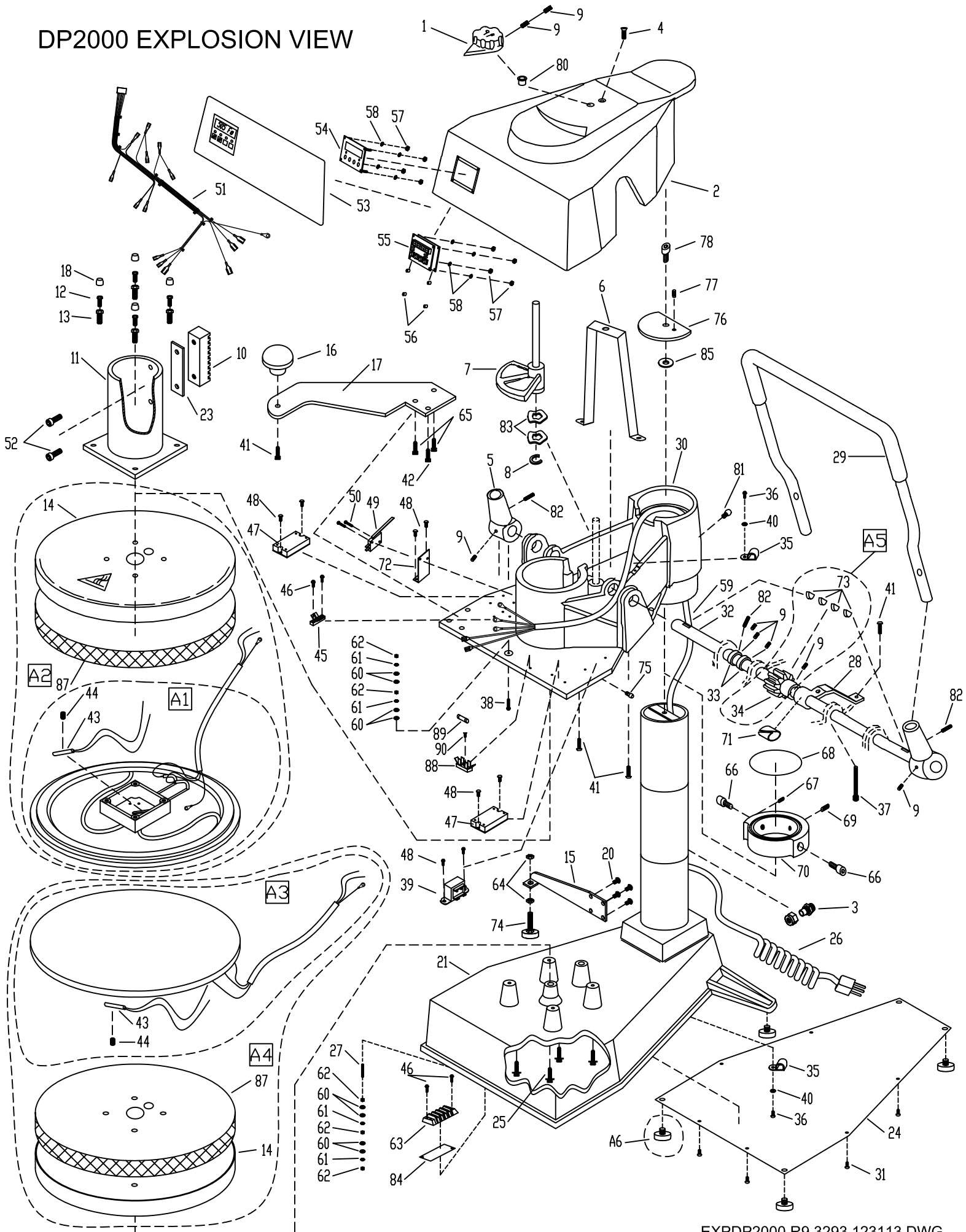


# DP2000 EXPLOSION VIEW



**PROLUXE**  
**PARTS LIST DP2000**

REF. #	DESCRIPTION	DP2000B 240 ~ AC	DP2000LB 240 ~ AC	DP2000PB 240 ~ AC	DP2000PLB 240 ~ AC
1	KNOB, THICK / THIN	1109309	1109309	1109309	1109309
2	HOUSING, INSTRUMENT	110118122	110118122	110118122	110118122
3	CABLE STRAIN RELIEF	3231	3231	3231	3231
4	SCREW, HOUSING	SF142034	SF142034	SF142034	SF142034
5	HANDLE SOCKET	11016650	11016650	11016650	11016650
6	BRACKET, HOUSING	110144130	110144130	110144130	110144130
7	CAM RAMP ASSEMBLY	1109310	1109310	1109310	1109310
8	RETAINING CLIP (CAM RAMP)	MPSC240	MPSC240	MPSC240	MPSC240
9	SET SCREW, GEAR BAR ASSEMBLY	SST142038	SST142038	SST142038	SST142038
10	GEAR RACK	1109380	1109380	1109380	1109380
11	PISTON ASSEMBLY	11018974	11018974	11018974	11018974
12	LOCKING BOLT, ADJUSTMENT	BH51618134G5	BH51618134G5	BH51618134G5	BH51618134G5
13	BOLT, LEVEL ADJUSTMENT	1109367	1109367	1109367	1109367
14	SHROUD, UPPER PLATEN	1109336	1109336	1109336	1109336
15	LEFT HAND SWING ASSEMBLY	N/A	11058901	N/A	11058901
16	KNOB (SWING)	110017	110017	110017	110017
17	HANDLE SWING	110288210	110288210	110288210	110288210
18	CAP, VINYL (ADJUSTMENT SCREWS)	SC0687	SC0687	SC0687	SC0687
20	SCREW, PAN HEAD	N/A	SP142012	N/A	SP142012
21	BASE ASSEMBLY WITH POST	11061911	11061911	11061911	11061911
23	SHIM, GEAR RACK	110144120	110144120	110144120	110144120
24	COVER PLATE, BASE	11010954	11010954	11010954	11010954
25	SCREW, LOWER PLATEN	SSH51618214	SSH51618214	SSH51618214	SSH51618214
26	POWER CORD	110969175	110969175	110969175	110969175
27	SET SCREW, BASE GROUND	SST8321	SST8321	SST8321	SST8321
28	TENSION STRAP ASSEMBLY	11041663	11041663	11041663	11041663
29	HANDLE, PRESSURE	1109390	1109390	1109390	1109390
30	ARM	11098421	11098421	11098421	11098421
31	SCREW, BASE COVER PLATE	SP83214	SP83214	SP83214	SP83214
32	GEAR BAR	1109361	1109361	1109361	1109361
33	COLLAR, GEAR BAR	11013183	11013183	11013183	11013183
34	PINION GEAR	1109360A	1109360A	1109360A	1109360A
35	CLAMP, CABLE	CC12	CC12	CC12	CC12
36	SCREW, CLAMP, CABLE	SP83238	SP83238	SP83238	SP83238
37	SCREW, TENSION STRAP ADJUSTMENT	SSH1420314	SSH1420314	SSH1420314	SSH1420314
38	SCREW, GROUND	SP8321	SP8321	SP8321	SP8321
39	TRANSFORMER	11096975	11096975	11096975	11096975
40	WASHER, CLAMP, CABLE	WSAE8	WSAE8	WSAE8	WSAE8
41	SCREW, HANDLE SWING	SB142034	SB142034	SB142034	SB142034
42	SCREW, HANDLE SWING	SSH142012	SSH142012	SSH142012	SSH142012
43	SENSOR ASSEMBLY BLUE	110949110	110949110	110949110	110949110

**PROLUXE**  
**PART LIST DP2000**

REF. #	DESCRIPTION	DP2000B 240 ~ AC	DP2000LB 240 ~ AC	DP2000PB 240 ~ AC	DP2000PLB 240 ~ AC
44	SET SCREW, SENSOR	SST381638	SST381638	SST381638	SST381638
45	TERMINAL BLOCK	11098414	11098414	11098414	11098414
46	SCREW, TERMINAL BLOCK	SP83212	SP83212	SP83212	SP83212
47	SOLID STATE RELAY	MPR90217	MPR90217	MPR90217	MPR90217
48	SCREW, RELAY & TRANSFORMER	SP83214	SP83214	SP83214	SP83214
49	MICRO SWITCH	110969044	110969044	110969044	110969044
50	SCREW, MICRO SWITCH	SR44034	SR44034	SR44034	SR44034
51	WIRE HARNESS	110589050	110589050	110589050	110589050
52	SCREW, GEAR RACK	SSH381634	SSH381634	SSH381634	SSH381634
53	CONTROL PANEL OVERLAY	OPRODP1100	OPRODP1100	OPRODP1100	OPRODP1100
54	CONTROL FACIA	11086027	11086027	11086027	11086027
55	DIGITAL CONTROL	11096905220	11096905220	11096905220	11096905220
56	SPACER, NYLON	110969111	110969111	110969111	110969111
57	NUT, DIGITAL CONTROL	NH632	NH632	NH632	NH632
58	WASHER LOCK INT, DIGITAL CONTROL	WLIT6	WLIT6	WLIT6	WLIT6
59	POWER DIST CABLE	110589067	110589067	110589067	110589067
60	WASHER, GROUND	WSAE8	WSAE8	WSAE8	WSAE8
61	WASHER LOCK INTERNAL, GROUND	WLIT8	WLIT8	WLIT8	WLIT8
62	NUT, GROUND	NH832	NH832	NH832	NH832
63	TERMINAL BLOCK #6	6016	6016	6016	6016
64	NUT, HEX JAM	N/A	NHJ51618	N/A	NHJ51618
65	SCREW, HANDLE SWING	SSH142058	SSH142058	SSH142058	SSH142058
66	SCREW, COLLAR	SSH516181D	SSH516181D	SSH516181D	SSH516181D
67	SCREW, COLLAR	SST142034	SST142034	SST142034	SST142034
68	ORING, COLLAR	MPSS062	MPSS062	MPSS062	MPSS062
69	SCREW, COLLAR	SST5161834	SST5161834	SST5161834	SST5161834
70	COLLAR	11041323	11041323	11041323	11041323
71	BUSHING, BRASS (TENSION STRAP)	11018966	11018966	11018966	11018966
72	MICROSWITCH BRACKET	1101021213	1101021213	1101021213	1101021213
73	WOODRUFF KEY	KW931634	KW931634	KW931634	KW931634
74	RUBBER LEG	N/A	110288204	N/A	110288204
75	ZERK FITTING	B792	B792	B792	B792
76	ARM RETAINING PLATE	11056858	11056858	11056858	11056858
77	PIN, ROLL	PR18516	PR18516	PR18516	PR18516
78	SCREW, ARM RETAINING PLATE	SSH1213112	SSH1213112	SSH1213112	SSH1213112
80	BUSHING, INSTRUMENT HOUSING	212NN01420000	212NN01420000	212NN01420000	212NN01420000
81	ZERK, FITTING	B610	B610	B610	B610
82	SET SCREW, HANDLE SOCKET	SST14201	SST14201	SST14201	SST14201
83	WAVE WASHER	5806282	5806282	5806282	5806282
84	MARKER STRIP	MS6016	MS6016	MS6016	MS6016
85	WASHER, ARM RETAINING PLATE	WSAE12	WSAE12	WSAE12	WSAE12
87	FIBERGLASS INSULATION	MPSP251	MPSP251	MPSP251	MPSP251
88	FUSE HOLDER 1 AMP	MPPF708	MPPF708	MPPF708	MPPF708

**PROLUXE**  
**PARTS LIST DP2000**

REF. #	DESCRIPTION	DP2000B 240 ~ AC	DP2000LB 240 ~ AC	DP2000PB 240 ~ AC	DP2000PLB 240 ~ AC
89	FUSE BUSS 1 AMP	MPPF701R	MPPF701R	MPPF701R	MPPF701R
90	SCREW PHILLIPS PAN 2-56 x 1/4	SP25614	SP25614	SP25614	SP25614
A1	UPPER PLATEN WIRE ONLY	1101021101	1101021101	11098431100	11098431100
A2	UPPER PLATEN COMPLETE ASSEMBLY	1101021101K	1101021101K	11098431200	11098431200
A3	LOWER PLATEN WIRE ONLY	1101021100	1101021100	11098432100	11098432100
A4	LOWER PLATEN COMPLETE ASSEMBLY	1101021100K	1101021100K	11098432200	11098432200
A5	PINION GEAR ASSEMBLY	1109360A	1109360A	1109360A	1109360A
A6	FEET, RUBBER (5 EACH)	RF209	RF209	RF209	RF209