

Operations Manual

Model: CSD1212
Digitally Controlled
Clam Shell Grill



PROGRILLTM



PROLUXETM 
formerly DOUGHPRO. New Name. Same Quality. Superior Service.
proluxe.com

Operation Instructions

Please read carefully before attempting to use this appliance.

- Step 1.** Carefully unpack and clean grill plates with mild soap then sponge clean with cold water.
- Step. 2.** Place in location where it will be used allowing for clearances per the dimensions indicated.

WARNING! Allow 2” minimum clearance between adjacent equipment and/or wall areas.

Do not touch hot surfaces.

- Step 3.** Plug into proper 3 prong wall outlet. If other appliances are connected to the same circuit make sure the total load does not exceed maximum ampacity of the circuit. Electrical information is as follows:

120V/60Hz/1 phase/% \$\$W/1) ., Amps

Step 4: Warm-up

Energize by turning on the power switch which will illuminate when turned on. The display flashes and shows left preset timer during warm-up. Pre-heat temperature time will be 40-50 minutes. When the set point is reached, the display stops flashing and beeps 3 times.

Step 4: Operation

Simply place product on grill, close lid and press the desired pre-set time cycle (ex: 10 seconds). After the time cycle is finished press it again to reset the time cycle.

Cleaning Instructions

NOTE! Always turn off power and allow to cool down before attempting to clean. ***Never submerge grill in water or other liquid nor use mineral spirits or other flammable material to clean this appliance.***

!Never use ice to cool down grill, warranty will be void!

Clean stainless steel and griddle surfaces with soap and water using a soft, clean cloth periodically as required, but at least once daily. Never use harsh abrasives. Use only non-abrasive scouring pads when required.

Clean Cycle

275°F is the factory default temp for the CLEAN cycle. To change the CLEAN cycle temp, simultaneously hold down the TEMP and CLEAN buttons for 15 seconds.

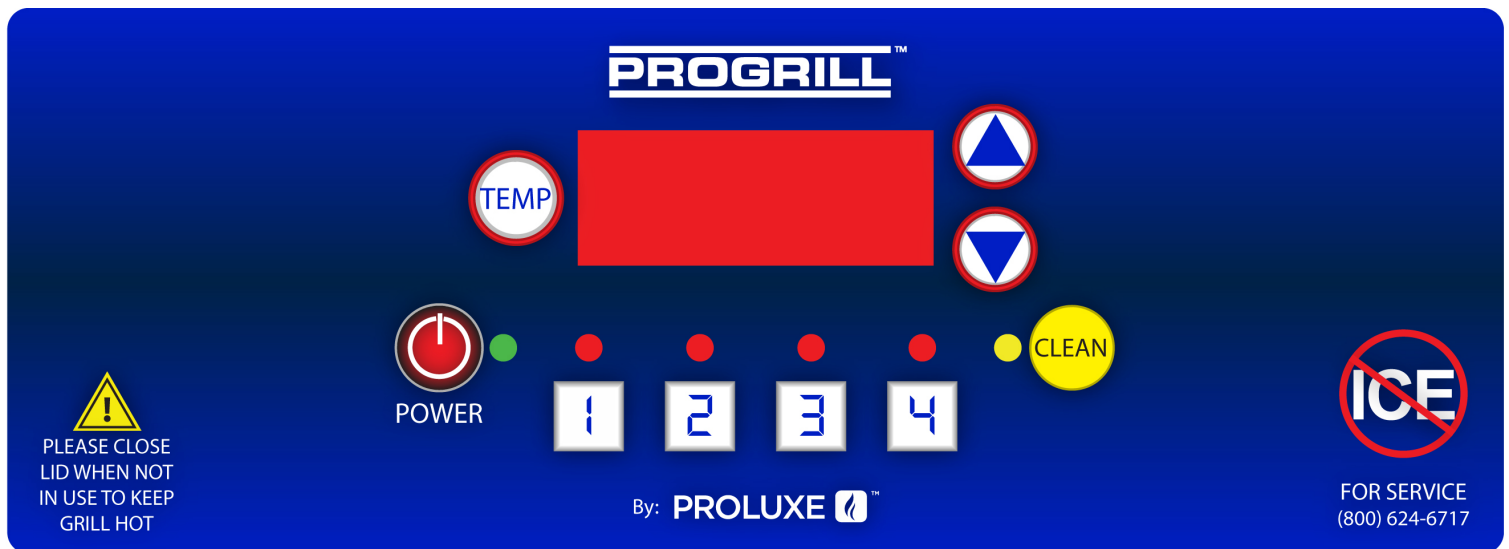
Using the up or down arrows to adjust to the desired temp.

To start a clean cycle, push CLEAN button once so the CLEAN LED light is turned on. All preset LED's are turned off, and the temperature set point is changed to the clean set point of 275°F. This also initiates the cool down to clean set point condition as well the display starts flashing until the clean set point is reached.

To stop the clean cycle, simply press the CLEAN button once to deactivate the clean cycle. The CLEAN LED is turned off, the preset LED's are restored, the temperature set point is changed to the main set point. Again, the warm-up condition is initiated and the display flashes until the cook set point is reached.

CSDFGFG Operating Instructions:

1. Press desired time to start the time cycle. After the cycle is finished, press it again to reset the time cycle
2. If for any reason the timer has to be reset in the middle of a cycle, you must press and hold the corresponding timer button for 3 seconds.



Instruction's for Adjusting the Temperature

PRESS and hold the **TEMP** and **ARROW** up buttons **simultaneously** for **15 seconds**.

The current temperature setting will display on the right digital display only.

Using the **ARROW** buttons, you may now adjust the temperature to your desired setting.

Once you have set your desired temperature simply push the **TEMP** button. The digital displays will now read the preset times.

Instruction's for Adjusting the Set-Time

Press the **TEMP** button **first and then the desired timer button and continue to hold both** for **5 seconds**.

The digital displays will now read their preset times as shown here. Each side is capable of having up to 4 different settings, making a total of 8 set-times.

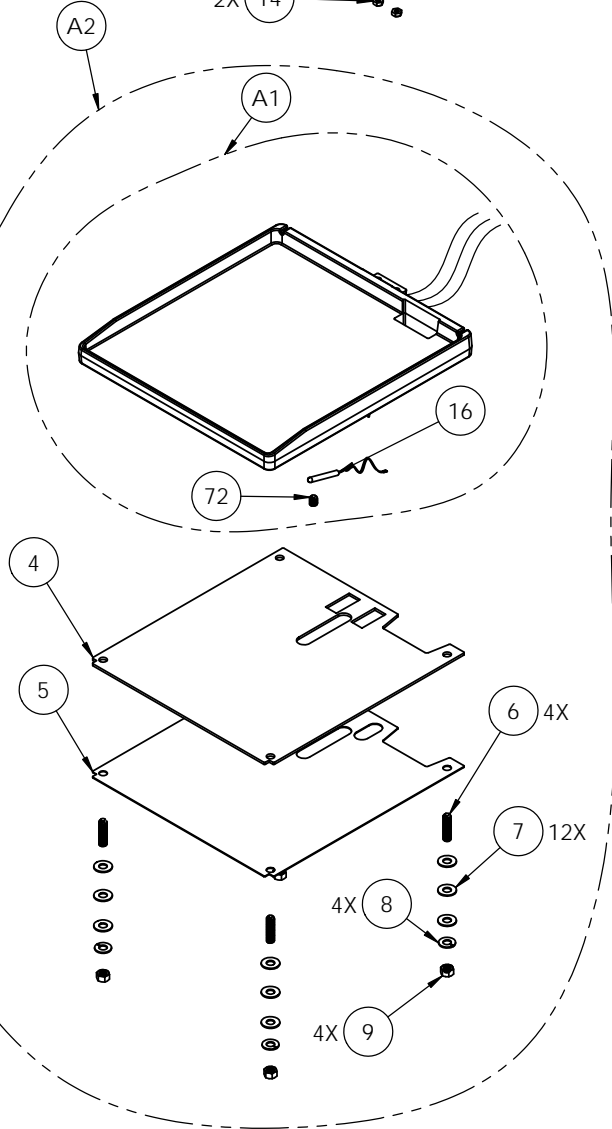
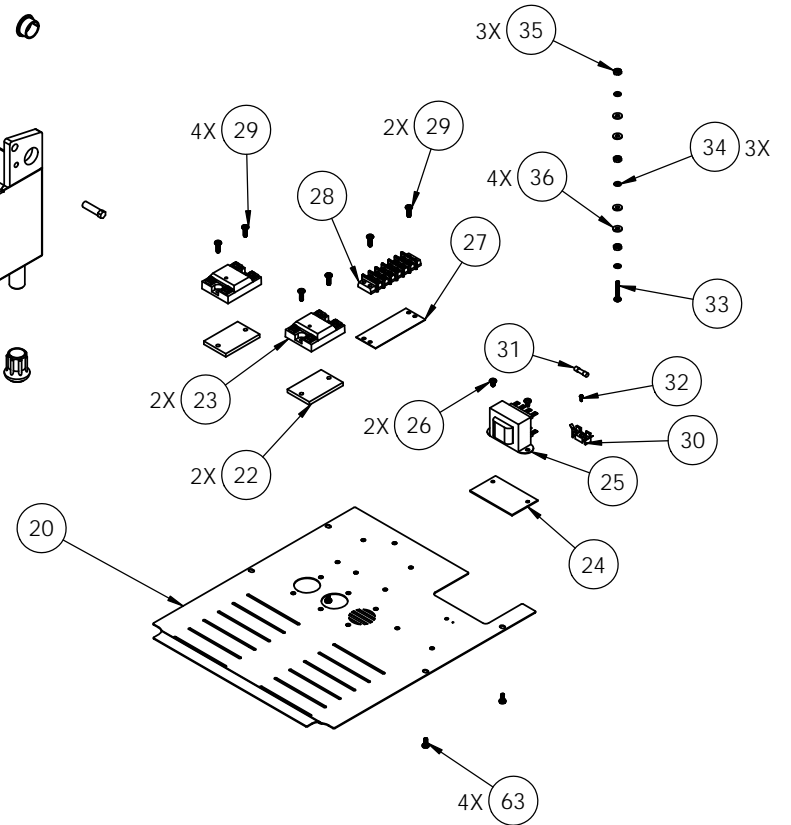
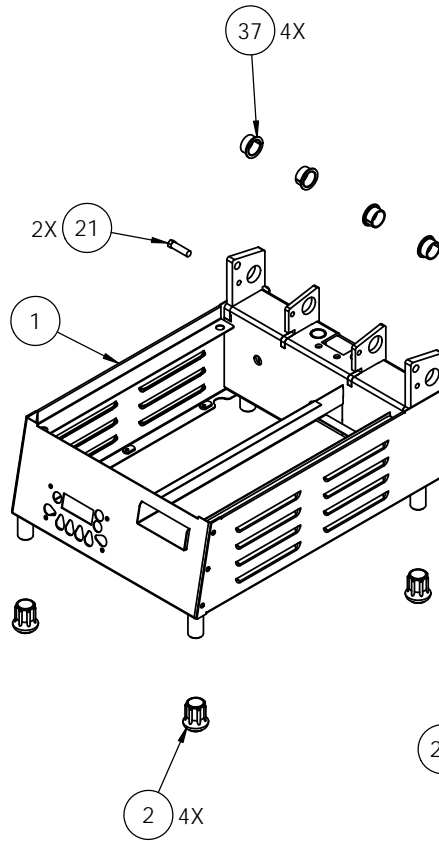
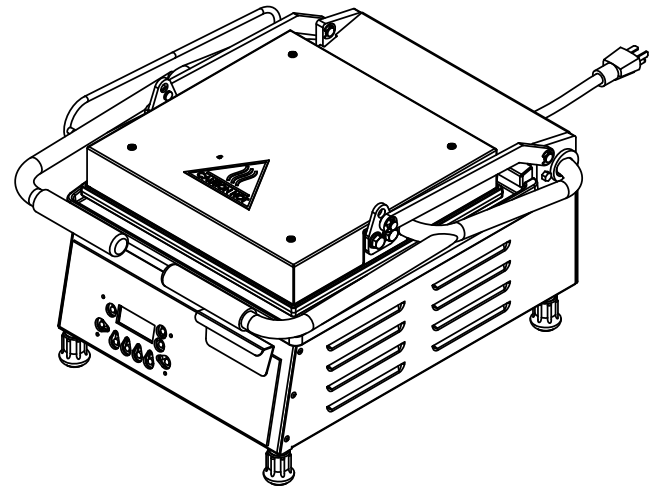
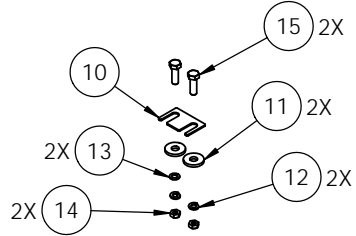
Now using the **ARROW** buttons you can set your desired time.

Once you have set the desired time simply press the **TEMP** button, the unit will display the new set-time.

***IMPORTANT NOTE:** When adjusting the time settings, The **RIGHT SIDE** time buttons control the left side, so the same time you set on the right will automatically be set to the left side accordingly. If you desire an additional set of times you can adjust the left side **AFTER** you have adjusted the right side without effecting the right side settings.

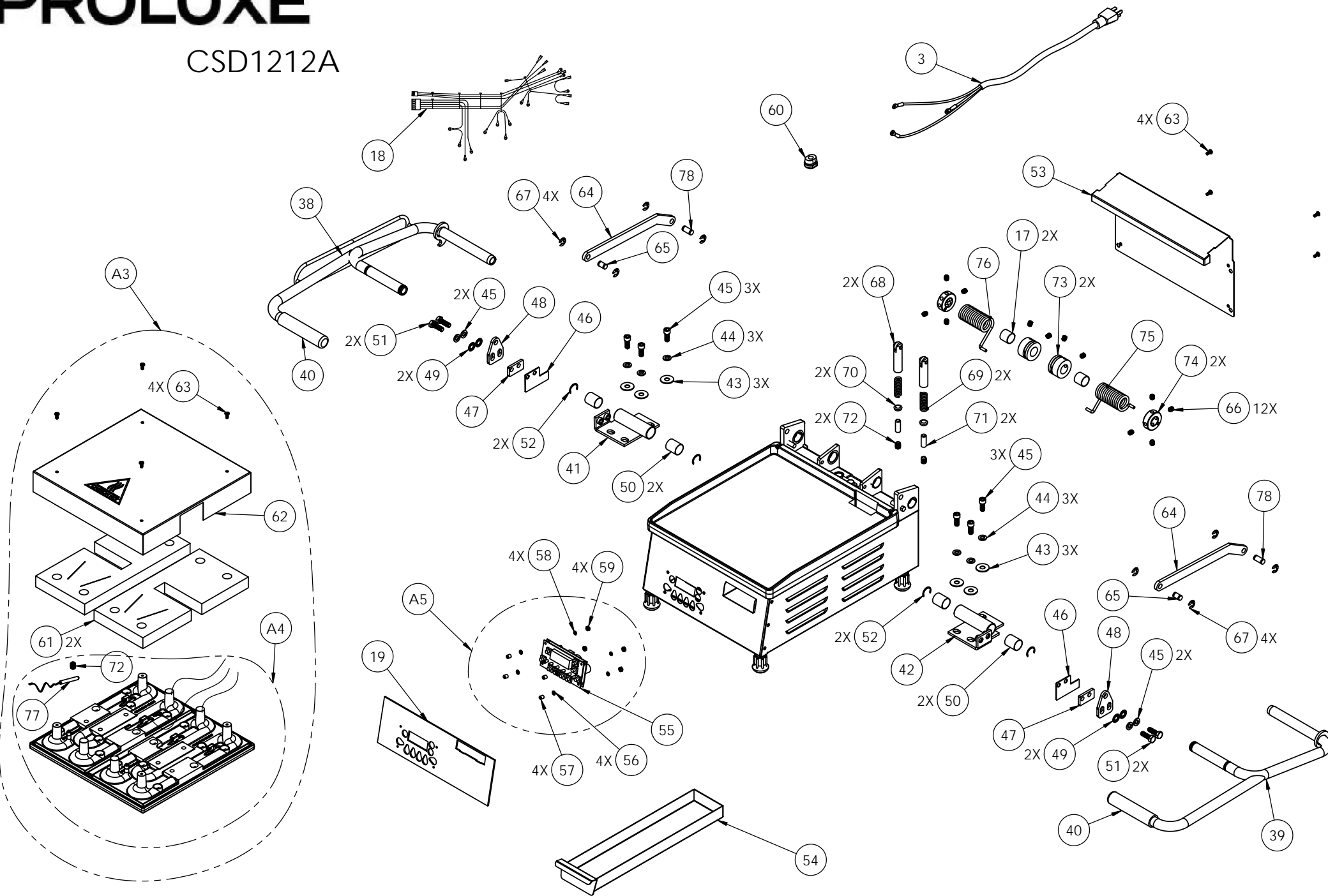
PROLUXE

CSD1212A



PROLUXE

CSD1212A



PARTS LIST FOR MODEL CSD1212

ITEM NO.	DESCRIPTION	MODEL CSD1212A	MODEL CSD1212DTA	QTY.
1	BASE FRAME ASSEMBLY	PG115100	PG115100	1
2	FEET, RUBBER 3/4	11016546469	11016546469	4
3	POWER CORD, 120 VOLTS	1101217174	1101217174	1
4	LOWER PLATEN, INSULATION	11018344019	11018344019	1
5	LOWER PLATEN INSULATION COVER	11018344018	11018344018	1
6	SCREW, SET 3/8-16X 1-1/2	SST3816112	SST3816112	4
7	WASHER SAE 3/8	WSAE38	WSAE38	12
8	WASHER SPLIT LOCK	WL38	WL38	4
9	NUT HEX 3/8-16	NH3816	NH3816	4
10	SHIM, LOWER PLATEN	11018344030	11018344030	1
11	GREEN INSULATION WASHER	C4401	C4401	2
12	LOCK WASH 1/4	WL14	WL14	2
13	WASHER SAE 1/4	WSAE14	WSAE14	2
14	NUT, HEX 1/4-20	NH1420	NH1420	2
15	BOLT, HEX 1/4 - 20 X 1	BH14201	BH14201	2
16	RTD, BOTTOM SENSOR	1108881102	1108881102	1
17	BUSHING TEFLON 3/4 LONG	110113441	110113441	2
18	WIRE HARNESS	PG115050	PG115050	1
19	CSD1212 OVERLAY	OCSD1212B	OCSD1212DTB	1
20	BOTTOM COVER WITH PEM NUTS	11018344022	11018344022	1
21	STOP, HEX PIN	11018344037	11018344037	2
22	SINK, HEAT, ALUMINUM (SSR)	11057322	11057322	2
23	SOLID STATE RELAY, 25 AMPS	PL2425	PL2425	2
24	INSULATOR, TRANSFORMER	1101159180	1101159180	1
25	TRANSFORMER	11096975	11096975	1
26	SCREW, PHILLIPS PAN HEAD 8-32 X 1/4	SP83214	SP83214	2
27	MARKER STRIP #6	MS6016	MS6016	1
28	TERMINAL BLOCK #6, DOUBLE	6016	6016	1
29	SCREW, PAN HEAD PHILLIPS 8-32 X 1/2	SP83212	SP83212	6
30	FUSE HOLDER 1 AMP	MPPF708	MPPF708	1
31	FUSE BUSS 1 AMP	MPPF701R	MPPF701R	1
32	SCREW, PHILLIPS PAN 2-56 X 1/4	SP25614	SP25614	1
33	SCREW, PHILLIPS PAN HEAD 8-32 X 1.0	SP8321	SP8321	1
34	WASHER, INTERNAL TOOTH LOCK #8	WLIT8	WLIT8	3
35	NUT, HEX 8-32	NH832	NH832	3
36	WASHER SAE #8	WSAE8	WSAE8	4
37	BUSHING FLANGED, TEFLON .500"	110115563	110115563	4
38	HANDLE LEFT ASSEMBLY	11018344027	11018344027	1
39	HANDLE RIGHT ASSEMBLY	11018344026	11018344026	1
40	HANDLE GRIP	110901168	110901168	2
41	CLEVIS ASSEMBLY LEFT HAND	11018344013	11018344013	1
42	CLEVIS ASSEMBLY RIGHT HAND	11018344012	11018344012	1
43	5/16 WASHER CUT	WC516	WC516	6
44	WASHER, 5/16" SPLIT LOCK	WL516	WL516	10
45	SCREW, SOCKET HD 5/16-18 X 3/4"	SSH5161834	SSH5161834	6
46	SHIM, COVER	11018344014	11018344014	2
47	SPACER, LINK	11018344024	11018344024	2
48	LEVELING BRACKET	11018344023	11018344023	2
49	WASHER LOCK INTERNAL TOOTH 5/16	WLIT516	WLIT516	4
50	BUSHING, TEFLON, 3/4 I.D. X .875 X 1" LONG	110115541	110115541	4
51	5/16 - 18 x 1 SS., BOLT HEX HEAD	BH516181S	BH516181S	4
52	E-CLIP, RETAINING RING	LCC3478	LCC3478	4
53	COVER, REAR	11018344016	11018344016	1
54	GREASE TRAY ASSY	11018344005	11018344005	1
55	DIGITAL CONTROL	110171433052	110171433052	1
56	WASHER, STEEL .311 O.D. X .150 I.D.	311150019	311150019	4
57	NYLON SPACER 1/4 X .141 X 9/32	11090109	11090109	4
58	WASHER, INTERNAL TOOTH LOCK #6	WLIT6	WLIT6	4
59	NUT, HEX 6-32	NH632	NH632	4
60	STRAIN RELIEF	1106546468	1106546468	1
61	UPPER PLATEN, INSULATION	11018344074C1	11018344074C1	2
62	TOP SHROUD	11019344010	11019344010	1
63	SCREW, PAN HEAD PHILLIPS 8-32 X 3/8 SS	SP83238S	SP83238S	12
64	TOP LINK	11018344017	11018344017	2
65	PIN, PIVOT FRONT	11017088865	11017088865	2

PARTS LIST FOR MODEL CSD1212

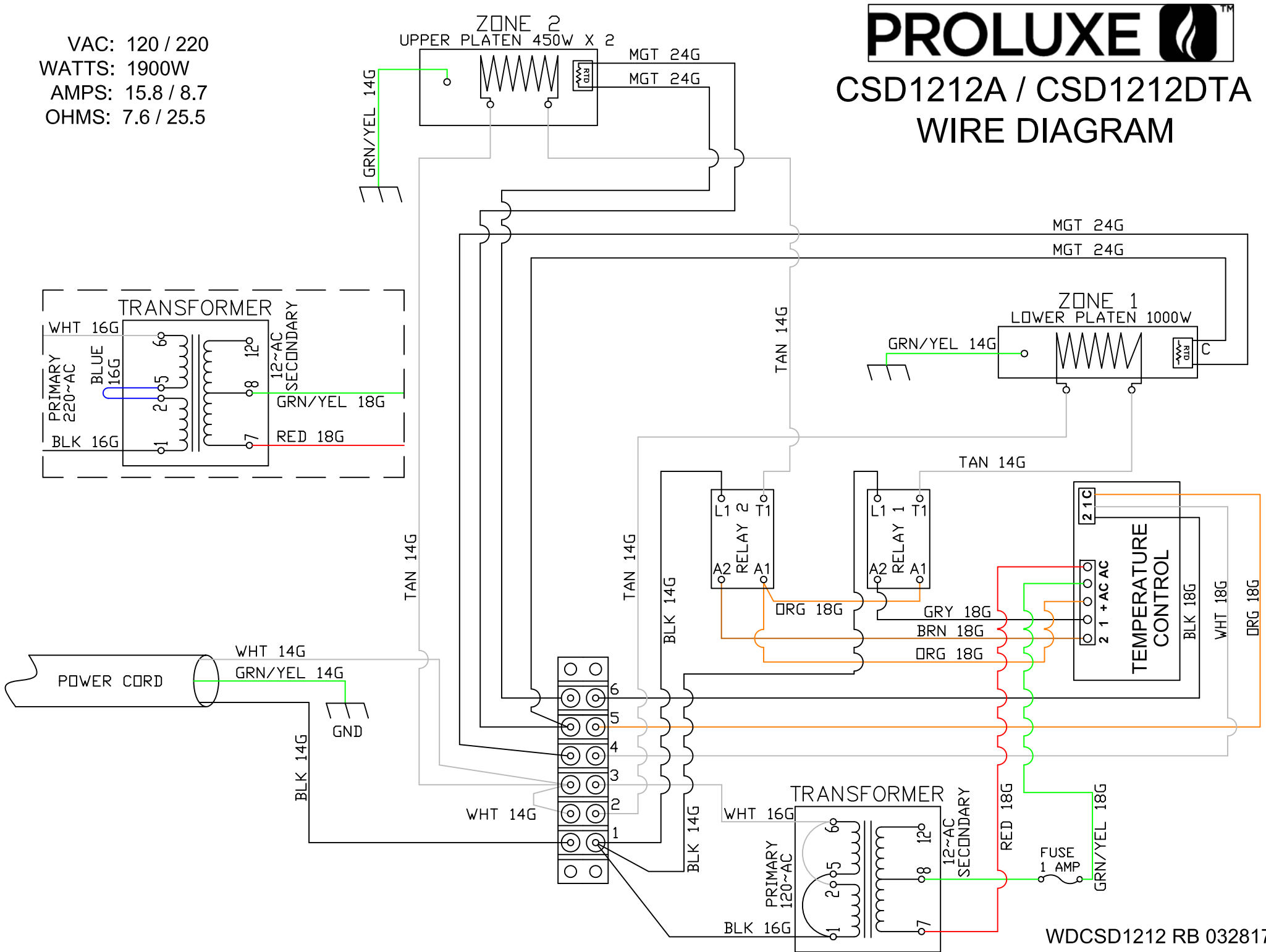
66	SCREW, SET KNURKED CUP POINT 5/16-18 X 3/8	SST5161838KN	SST5161838KN	12
67	RING RETAINING 3/8	11017088867	11017088867	8
68	PLUNGER ASSEMBLY	110115544	110115544	2
69	SPRING, DETENT	110115555	110115555	2
70	TUBING-PAD	110115531	110115531	2
71	SCREW, SET 3/8-16 x 1.00	SST38161	SST38161	2
72	SCREW, SET 3/8-16 X 1/2	SST381612	SST381612	4
73	COLLAR CAM	110115530	110115530	2
74	HANDLE SPRING ADJUSTING COLLAR	110115528	110115528	2
75	COUNTER BALANCE SPRING RIGHT HAND	1101023154R	1101023154R	1
76	COUNTER BALANCE SPRING LEFT HAND	1101023154L	1101023154L	1
77	RTD, TOP SENSOR	1108881101	1108881101	1
78	PIN, LEVELER REAR	11018344048	11018344048	2
79	MANUAL CSD1212	MCSD1212A	MCSD1212DTA	1
A1	LOWER PLATEN WITH WIRING ONLY	11018344032120K	11018344032120K	1
A2	LOWER PLATEN ASSEMBLY COMPLETE	11018344032120AK	11018344032120AK	1
A3	UPPER PLATEN WITH WIRING ONLY	11019344074120K	11019344074120K	1
A4	UPPER PLATEN ASSEMBLY COMPLETE	11019344074120AK	11019344074120AK	1
A5	KITTED, CONTROLLER DIGITAL	110171433052K	110171433052K	1

VAC: 120 / 220
 WATTS: 1900W
 AMPS: 15.8 / 8.7
 OHMS: 7.6 / 25.5

PROLUXE

CSD1212A / CSD1212DTA

WIRE DIAGRAM



Warranty & Return Policy

Proluxe warrants all products manufactured by it against defects in workmanship or materials from the date of purchase for a period of (1) year on parts and **labor**. **This warranty applies to only equipment purchased and used in the United States.** Warranty period shall begin when equipment ships. Warranty travel shall only be covered for 60 miles. Limited lifetime warranty on heating elements.

ALL WARRANTY SERVICE CALLS MUST BE APPROVED BY PROLUXE. IF THIS PROCEDURE IS NOT FOLLOWED, WARRANTY SERVICE WILL NOT BE COVERED. WARRANTY SERVICE WILL BE PAID ON STRAIGHT TIME, OVERTIME WILL NOT BE COVERED.

Exclusions:

- 1. WOOD / GAS FIRED OVENS:** PROLUXE warranty applies to the main body of the oven being steel / refractory and insulation shall be free from defects in materials and workmanship for a period of four years from the date of purchase. The gas equipment shall be free from defects in materials and workmanship for a period of one (1) year from the date of purchase. Lifetime warranty against cracks on oven floor.
- 2. Air compressors are excluded from this warranty,** but PROLUXE may act as a warranty expeditor in certain instances regarding these compressors. The air compressor manufacturer provides a limited warranty and a copy of this warranty is furnished with all compressors sold by PROLUXE. For prompt handling of compressor warranty claims the instructions of the compressor manufacturer must be adhered to.
- 3. Equipment built to special order as well as accessories** cannot be canceled and are not returnable unless defective within the terms of this warranty.
- 4. In no event shall PROLUXE be liable for consequential damages arising out of the failure of any of its products if operated improperly or caused by normal wear or damage by operator abuse.**
- 5. BC2325 pedestal warranty disclaimer:** Pedestals shall only be covered under warranty if they have been cleaned using the factory approved cleaning method. cracked or damaged pedestals must be inspected by the factory before warranty is authorized.
- 6. Limited lifetime warranty on heating elements:** If replacement is needed, Proluxe will send the new part at no charge but **labor** will not be covered unless the unit is still under the 1 year manufacture warranty.

Returned Merchandise Policy:

Should it become necessary to return any of the company's products, the following instructions must be adhered to: First, contact our customer service department for approval and a return authorization number. *Please have the serial number of your item available at that time.* All merchandise must be shipped *freight prepaid* by customer or service agency. Subject to the inspection of the product by the company, a restocking charge of 20% of the Net purchased price paid to PROLUXE will be assessed. Merchandise may not be returned for credit without *prior written approval* of PROLUXE. Collect shipments *will not* be accepted. No returns after 60 days of original shipment date on machines. Purchased parts may not be returned after 30 days.

If upon inspection by PROLUXE or its authorized agent it is determined the equipment has not been used in an appropriate manner, has been modified, or has not been properly maintained, or has been subject to misuse, misapplication, neglect, abuse, accident, unauthorized modification, damage during transit, delivery, fire, flood, act or war, riot or act of God, then this warranty shall be deemed null and void.

Terms & Conditions:

1. Prices indicated in the PRICE LIST are suggested retail prices and are shown in U.S. DOLLARS.
2. Terms of Payment: 1% 10 days, NET 30 days.
3. **NEW ACCOUNTS:** Satisfactory credit information must be provided before open account status can be extended. Unless agreed otherwise, all shipments will be made C.O.D., CASH IN ADVANCE.
4. **PRICING:** Prices, specifications, model numbers, capacities and accessories are subject to change without notice.
5. **FREIGHT / ROUTING:** Method of shipment will be determined by PROLUXE unless otherwise advised by PURCHASER.
6. **DAMAGED CLAIMS:** All merchandise shipped at purchaser's risk. Inspection must be made by purchaser at time goods are received. If goods are damaged, the PURCHASER shall request that the agent of the transportation company make a written notation on the proper shipping documents immediately and then file a claim for damage. **GOODS DAMAGED IN SHIPMENT ARE NOT RETURNABLE.**
7. **RETURNS:** Machines may not be returned after 60 days. Purchased parts may not be returned after 30 days. A restocking fee of 20% will be assessed on non-warranty returns.
8. **TAXES:** Prices indicated herein DO NOT include State, Federal, Local or foreign taxes or duties, nor do they include fees, permits, insurance or other levies, all of which are the responsibility of the purchaser.
9. All orders are subject to acceptance by PROLUXE.
10. Possession of this price list shall not be considered an offer to sell.