

HH02/04 Base and Dish Heaters

Service, Installation and Care Manual

Please read this manual completely before attempting to install or operate this equipment! Notify carrier of damage! Inspect all components immediately. See page 2.



**IMPORTANT INFORMATION
READ BEFORE USE
PLEASE SAVE THESE INSTRUCTIONS!**

CONTENTS

RECEIVING & INSPECTING EQUIPMENT.....2
 SPECIFICATIONS2
 INSTALLATION3
 OPERATION4
 MAINTENANCE6
 TEMPERATURE ADJUSTMENT6
 ELECTRICAL WIRING DIAGRAMS6
 SPRING & ROD PLACEMENT & CAPACITY CHARTS
 HH027
 HH047
 REPLACEMENT PARTS LISTS
 HH028
 HH049
 ELEVATOR ASSEMBLIES10
 STANDARD LABOR GUIDELINES.....11
 STANDARD WARRANTIES..... 12-13
 AUTHORIZED PARTS DEPOTS..... back cover

SERIAL NUMBER LOCATION

The Serial number on all HH02 & HH04 model units is located on the side of the unit near the on/off switch.

Always have the serial number of your unit available when calling for parts or service. A complete list of authorized Delfield parts depots can be found at www.delfield.com.

©2010 The Delfield Company. All rights reserved. Reproduction without written permission is prohibited.

SERIAL #
MODEL #
INSTALLATION DATE:

RECEIVING AND INSPECTING THE EQUIPMENT

Even though most equipment is shipped crated, care should be taken during unloading so the equipment is not damaged while being moved into the building.

1. Visually inspect the exterior of the package and skid or container. Any damage should be noted and reported to the delivering carrier immediately.
2. If damaged, open and inspect the contents with the carrier.
3. In the event that the exterior is not damaged, yet upon opening, there is concealed damage to the equipment notify the carrier. Notification should be made verbally as well as in written form.
4. Request an inspection by the shipping company of the damaged equipment. This should be done within 10 days from receipt of the equipment.
5. Check the lower portion of the unit to be sure legs or casters are not bent.

6. Also open the compressor compartment housing and visually inspect the refrigeration package. Be sure lines are secure and base is still intact.
7. Freight carriers can supply the necessary damage forms upon request.
8. Retain all crating material until an inspection has been made or waived.

Uncrating the Equipment

First cut and remove the banding from around the crate. Remove the front of the crate material, use of some tools will be required. If the unit is on legs remove the top of the crate as well and lift the unit off the skid. If the unit is on casters it can be "rolled" off the skid.

HH SPECIFICATIONS

Model	Overall			Amps	Volts	Watts	NEMA Plug	Shipping Weight
	L	D	H					
Open Front Refrigerated Display Cases								
HH02	29.94"	22.50"	40.00"	12.0	208	2600	6-20P	183
HH04	39.62"	22.50"	40.00"	14.0	240	3200	6-20P	213



INSTALLATION

The units represented in this manual are for indoor use only. The HH base and plate heaters discussed in this manual are mobile, thermostatically controlled, forced air convection heated dispensers suitable for a wide variety of dish or metal pellet base configurations, sizes and materials.

Electrical Connection



Refer to the amperage data on pages 2 or the serial tag data and your local code or the National Electrical Code to be sure the unit is connected to the proper power source. A protected circuit of the correct voltage and amperage must be run for connection of the supply cord.

The units have an ON/OFF switch on the end of the unit near the push handle. Read the following sections of the manual regarding set-up and operation before turning unit on.



The power switch must be turned to OFF and the unit disconnected from the power source whenever performing service or maintenance functions

Setting up the equipment

All models are equipped with a self-leveling mechanism that is removable through the top to make adjustments to the tension springs or the optional dish guide rods. By adding or removing springs, the proper dispensing height can be obtained; by adding and moving rods, different dish stacking arrangements can be made. Refer to the tables on page 8 for information on the number of spring and rod arrangements. Both adjustments should be done at the same time as part of the initial equipment set up or when a change of dinnerware occurs.

To prepare the equipment for operation, proceed as follows:



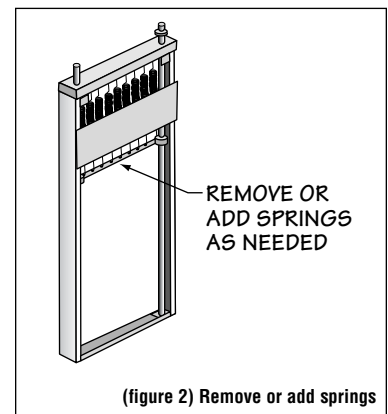
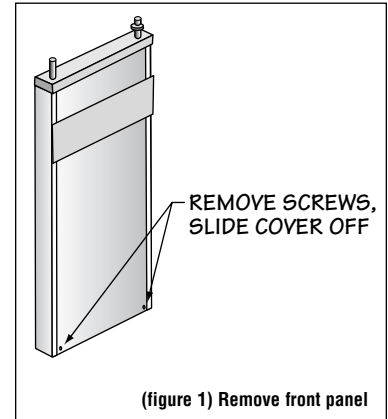
- 1) Remove carrier tray and lift elevator assembly up and out. Set it on the floor. It is recommended that two persons perform this operation
- 2) Using a flat screwdriver, loosen the screws holding the bottom of the spring guard panels. Remove both panels.
- 3) For correct spring arrangement, refer to the tables on page 8. Disconnect any unnecessary springs from the elevator carrier and leave hanging from the top frame for future use.
- 4) Screw the spring guard panels back into position.
- 5) To install the dish guide rods into models HH02 or HH04, first select the rod arrangement you need from the tables on page 8. Put the threaded end of the rod into the sockets in the bottom of the unit in the pattern you selected. If pliers are used to tighten these, make sure not to crimp the rods or carrier may bind.
- 6) Place the elevator assembly back inside the cabinet. Once again, it is recommended that two persons perform this operation.
- 7) Return the carrier tray to its original position.

INSTALLATION CONTINUED

How to adjust self-leveling dispenser

Tools Needed: One small flat head screw driver; One Phillips head screw driver.

1. Always wear safety glasses when adjusting your dispenser. Also, lock brakes on mobile units before beginning.
2. Unload dispenser and remove stainless steel load tray by lifting straight up and set it aside (see diagrams on page 11).
3. Use small regular screw driver to loosen each retainer mounted on stainless steel rod at top of each elevator housing.
4. To remove elevator housing, lift housing straight up to clear the stud on unit base. Then gently swing the bottom of the housing towards the inside of the unit and pull housing out of the unit (see diagrams on page 11). Lay housing on flat surface.
5. Use Phillips head screw driver to remove front panel on the elevator housing (see fig. 1).
6. If carrier is riding too high, you need to remove springs. With carrier all the way to the top, gently disengage one spring at a time, unhooking bottom loop out of carrier bracket (see fig. 2). Remove as many springs as necessary.
If carrier is riding too low, you need to add springs. With carrier all the way to the top, gently engage one spring at a time by hooking bottom loop of spring into carrier bracket. Add as many springs as necessary.
7. When finished, put elevator housing back in unit and put stainless steel load tray back on elevator housings. Load unit to test dispensing level. If spring adjustment does not position carrier properly, repeat procedure #6 trying different springs. If this does not work, a different set of springs may be required. To order, call The Delfield Company Parts and Service Department at 800.733.8829
8. If level is appropriate, put front panels back on and tighten retainer.



Dispenser should not be operated with front panels off elevator housing.



When adjusting the elevators make sure each have the same number and size of springs connected to the carrier on both sides. This will prevent the load tray from binding.

OPERATION

HH units are designed to operate in one of two different heating ranges: the high range for non-wax filled metal pellet bases or the low range for china plates. These ranges can be selected as required (see “Temperature adjustment” page 7). Once the proper operating range has been set and the unit is turned on, the fan motor, heater and power indicator light will come on. There is a power indicator light for each of the two different ranges, but only the one for which the unit is set will be lit. This provides the operator a way to check which range, BASES or PLATES is being used. There is also a rectangular “service” light located next to the ON/OFF switch.

The fan motor will begin to circulate the heated air in and around the bases or plates in a convection process that promotes a quick and even heat absorption by the dinnerware.

Once the air inside the cabinet has reached the desired temperature, the thermostat will continue to maintain this temperature by regulating the power to the heater. The fan will run as long as the unit is on.

Loading

Load carrier tray by carefully stacking the dishes or bases in between the guide rods in the pattern which matches the rod layout selected from page 8. Whether guide rods are used or not, always keep the load level on the carrier or it may bind. Never exceed the recommended dish capacities shown on page 8.



Wax filled and plastic pellet bases should not be heated in these units. Failure to adhere to this warning could cause explosion or fire.

Power

Set the power switch to the ON position. A pilot light will come on to indicate which temperature range is in use.



Make sure the correct temperature range (BASE or PLATE) is selected. Using the wrong range may cause damage to dishes.

Keep the cover closed completely to insure proper heating operation. Depending on the stack configuration, quantity and dish material, the heating time will vary. The heater should always be turned on 60 to 90 minutes before dispensing. Generally, china dishes will heat quicker. Metal pellet bases will require the longest heat up time.

Dispensing



Operators should always wear gloves or use plate lifters when handling heated bases



After the unit is turned off and unplugged, the bases or dishes inside will remain hot for some time. Leave the lid open to allow the unit to cool.

Dispense the dishes in an even manner to keep the load balanced or the carrier may bind.



These units are furnished with a red “service light” located near the on/off switch. If at any time during the operation of the heater, this light comes on, it means there has been a thermostat failure and power to the heating element has been cut off. The fan may remain in operation but the unit will not heat. Notify your maintenance supervisor before attempting to operate unit again.

MAINTENANCE

Turn the unit off and disconnect the plug from the outlet and allow the cabinet to cool. If your unit is equipped with a “twist lock” plug, turn the plug to the left (counter-clockwise) to unlock it before pulling it out. Never pull on the cord. To reconnect the plug to the “twist lock” outlet, match the hooked blade to the corresponding slot, push the plug straight in until it is seated and turn to the right (clockwise) to lock.

Pull elevator assembly up and out and set it on a work surface. Two persons should perform this operation. Wipe it down with a damp cloth.

Clean out any debris inside the cabinet and wipe it down with a damp cloth. If necessary, loosen the screws holding the perforated guard panel and lift it out of the cabinet. Wipe down the area around the fan and heater carefully to avoid damage, then reassemble panel.

Place each mechanism back inside the cabinet and proceed by cleaning the outside of the cabinet.

Stainless Steel Care and Cleaning

To prevent discoloration of rust on stainless steel several important steps need to be taken. First, we need to understand the properties of stainless steel. Stainless steel contains 70-80% iron which will rust. It also contains 12-30% chromium which forms an invisible passive film over the steels surface which acts as a shield against corrosion. As long as the protective layer is intact, the metal is still stainless. If the film is broken or contaminated, outside elements can begin to breakdown the steel and begin to form rust or discoloration. Proper cleaning of stainless steel requires soft cloths or plastic scouring pads.



NEVER USE STEEL PADS, WIRE BRUSHES OR SCRAPERS!

Cleaning solutions need to be alkaline based or non-chloride cleaners. Any cleaner containing chlorides will damage the protective film of the stainless steel. Chlorides are also commonly found in hard water, salts, and household and industrial cleaners. If cleaners containing chlorides are used be sure to rinse repeatedly and dry thoroughly upon completion.

Routine cleaning of stainless steel can be done with soap and water. Extreme stains or grease should be cleaned with a non-abrasive cleaner and plastic scrub pad. It is always good to rub with the grain of the steel. There are also stainless steel cleaners available which can restore and preserve the finish of the steels protective layer.

Early signs of stainless steel breakdown can consist of small pits and cracks. If this has begun, clean thoroughly and start to apply stainless steel cleaners in attempt to restore the passivity of the steel.



Never use an acid based cleaning solution! Many food products have an acidic content which can deteriorate the finish.

Never use a high pressure water wash for this cleaning procedure as water can damage the electrical components.

Gasket Maintenance

Gaskets require regular cleaning to prevent mold and mildew build up and also to keep the elasticity of the gasket. Gasket cleaning can be done with the use of warm soapy water. Avoid full strength cleaning products on gaskets as this can cause them to become brittle and prevent proper seals. Also, never use sharp tools or knives to scrape or clean the gasket which could possibly tear the gasket and rip the bellows.

TEMPERATURE ADJUSTMENT

The base range has been factory preset for approximately 250°F (120°C) and the plate range for 170°F (76°C). To change ranges, turn the unit off and disconnect the plug from the outlet. Allow the cabinet to cool to room temperature. Loosen bottom screws from rear louvered panel and remove. Set the toggle switch to either BASES (high range thermostat) or PLATES (low range thermostat), as desired. The Plate mode is recommended for china dishes. The BASES mode is to be set only for metal pellet bases.

The high- and low-range thermostats are located to the right of the toggle switch (see illustration 1). The high-range thermostat (for use with bases) is on top; the low-range thermostat (for use with dishes) is on the bottom. To adjust the set temperature of either thermostat, use a small flat screwdriver to turn the appropriate dial screw. Turning the screw clockwise will increase the temperature; turning it counter-clockwise will decrease the temperature. As the screw is turned, you will hear a “click” sound. Each click represents a 5°F (2.8°C) change. Base range of 235°F - 275°F and a plate range of 165°F - 205°F.

Secure rear louvered panel in place before attempting to operate unit again.

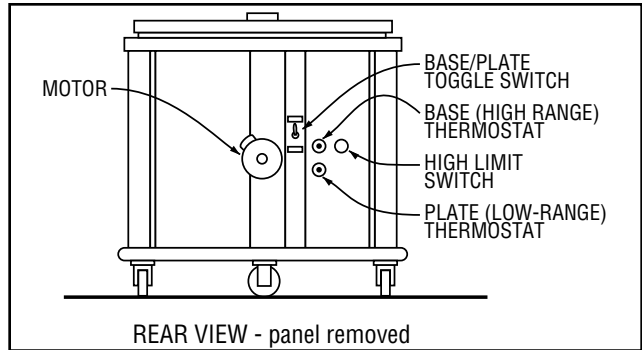
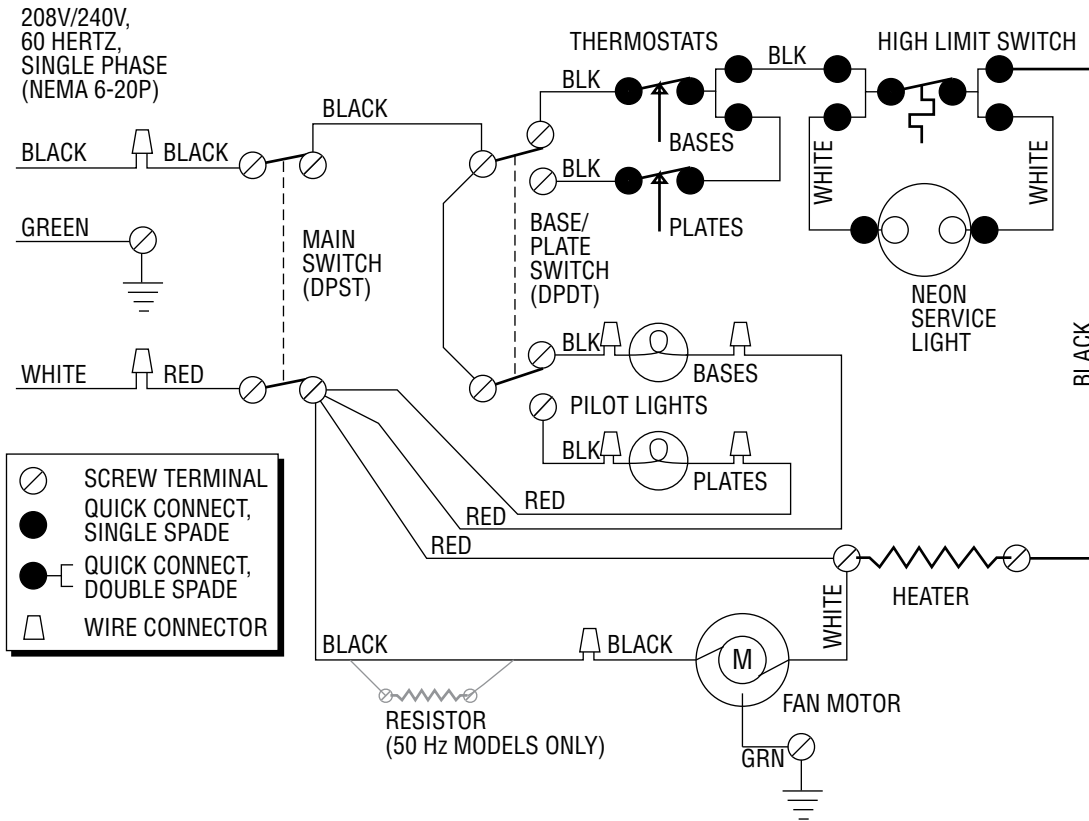


Illustration 1: Location of controls.

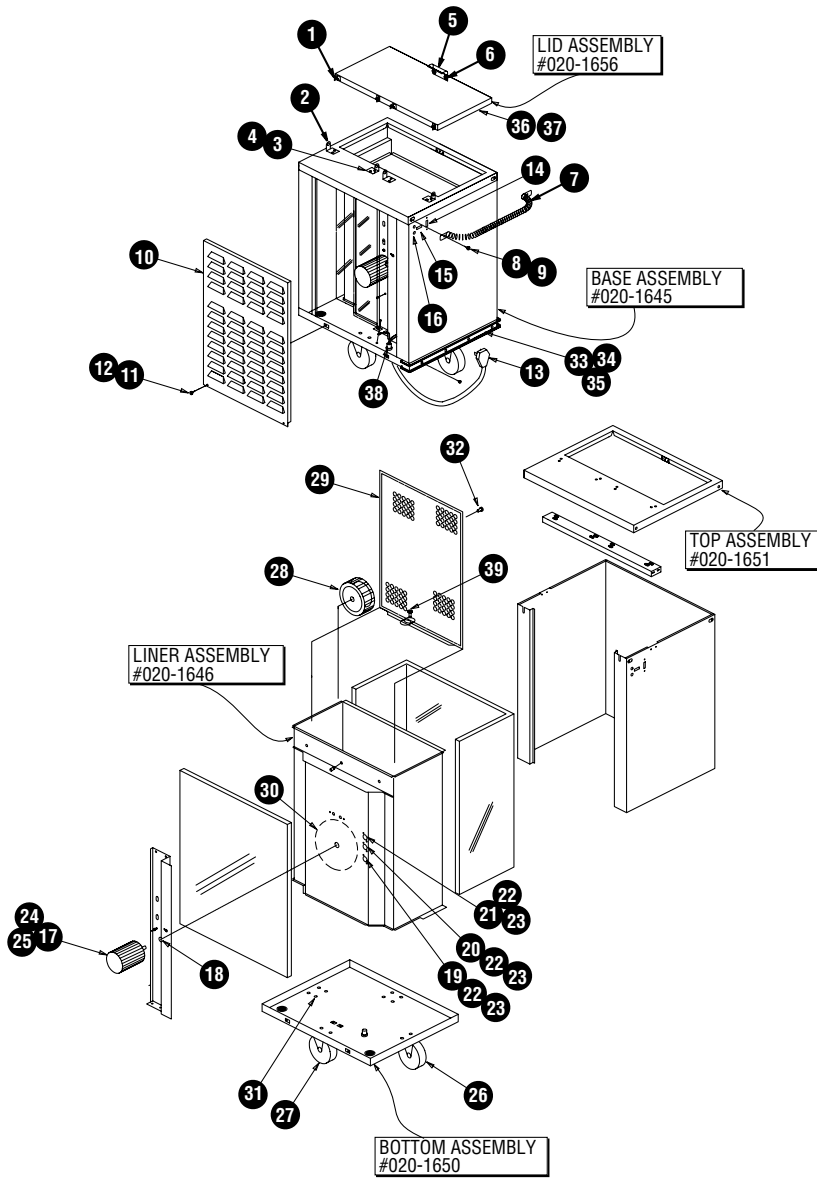
ELECTRICAL WIRING DIAGRAM



SPRING & ROD PLACEMENT CHART: HH02 & HH04

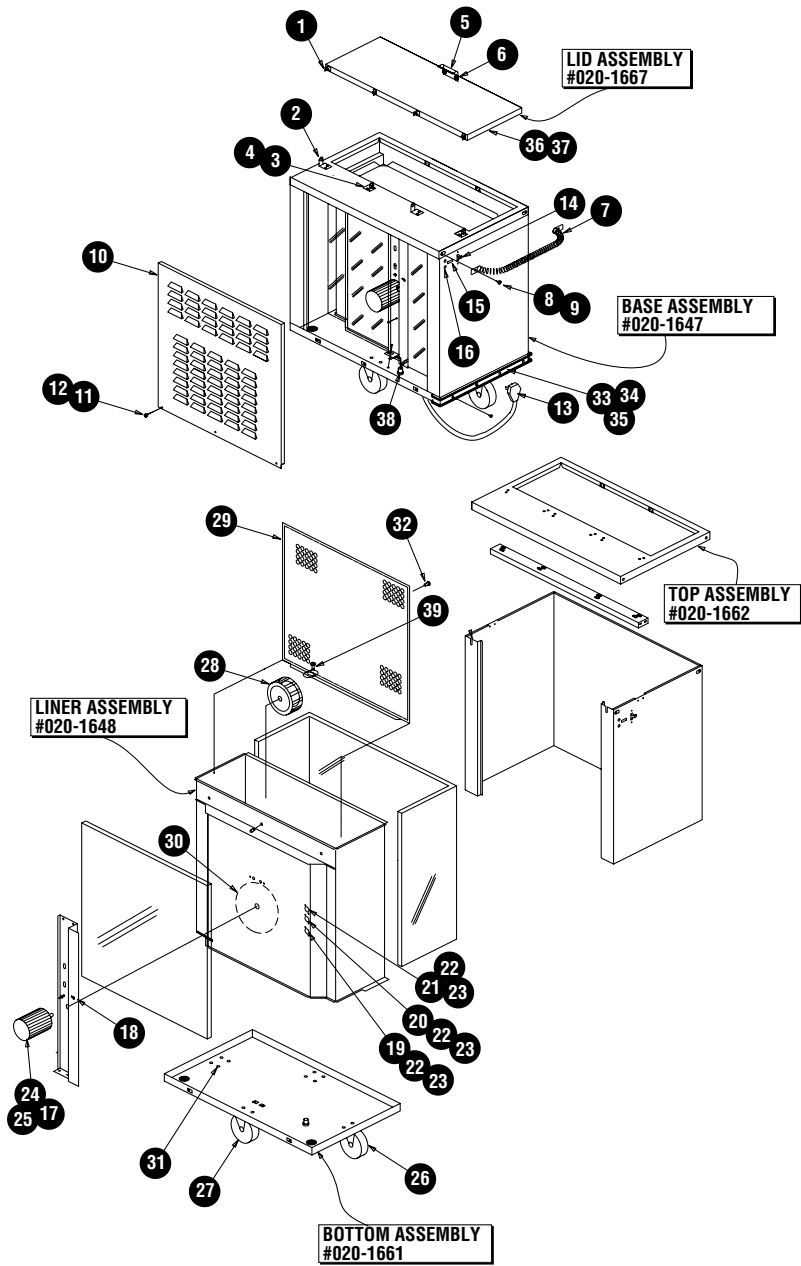
STYLE	DIMENSIONS	SPRINGS REQUIRED		TOTAL CAPACITY	ROD & DISH PLACEMENT
		LARGE	SMALL		
Bases HH02					
Bases	9.5" dia.	6	2	106	(See round plates diagram below)
Round plates HH02					
China	8.94" dia.	4	6	136	
China	9.06" dia.	4	5	136	
China	8.94" dia.	4	4	136	
China	9.06" dia.	4	2	120	
Platters HH02					
China	6.87" x 9.44"	4	6	168	
China	6.94" x 9.81"	4	2	168	
Rectangular dishes HH02					
China	5.19" x 7.88"	6	4	240	
China	5.06" x 7.88"	6	2	212	
China	5.13" x 7.75"	6	2	204	
China	5.19" x 7.81"	4	0	168	
China	5.13" x 7.38"	6	4	305	
China	4.98" x 7.81"	4	2	265	
Side dishes HH02					
China	3.44" x 4.75"	6	0	672	12 stacks, no rods
China	3.69" x 4.88"	4	0	440	
Bases HH04					
Bases	9.5" dia.	8	4	159	
Round plates HH04					
China	8.94" dia.	8	0	204	
China	9.06" dia.	8	0	204	
China	9.06" dia.	6	0	180	
Platters HH04					
China	6.87" x 9.44"	10	0	336	
China	6.94" x 9.81"	6	4	336	
Rectangular dishes HH04					
China	5.19" x 7.88"	10	0	360	
China	5.06" x 7.88"	8	4	318	
China	5.13" x 7.75"	8	4	306	
China	5.19" x 7.81"	4	4	252	
China	5.13" x 7.38"	10	0	488	
China	4.98" x 7.81"	6	0	424	
Side dishes HH04					
China	3.44" x 4.75"	6	2	1008	18 stacks, no rods
China	3.69" x 4.88"	4	4	704	

REPLACEMENT PARTS: HH02



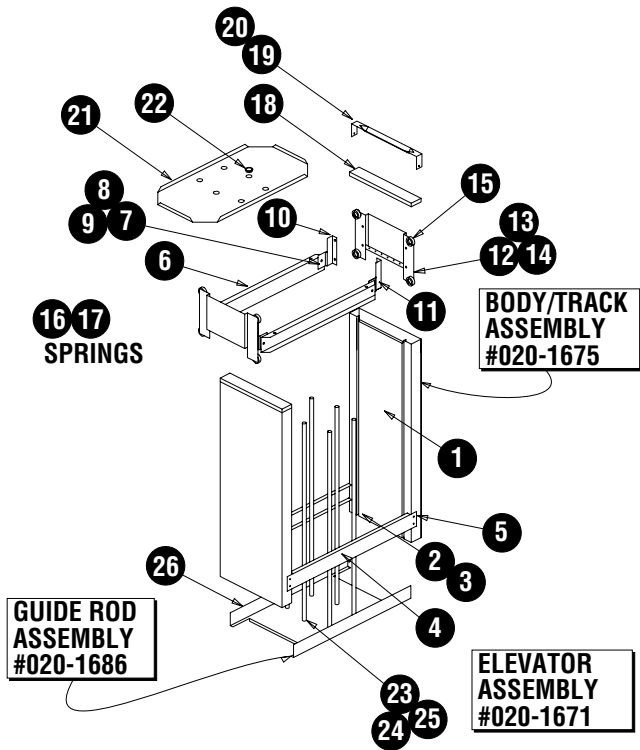
KEY	DESCRIPTION	PART #	QTY.
1	lid assembly	020-1656	1
2	hinge, left hand	004-8717	2
3	hinge, right hand	004-7375	2
4	screw, 1/4-20 x .5	632-0017	8
5	handle, lid	004-7378	1
6	screw, 1/4"-20 x .75	932-1365	2
7	handle, push/pull	004-6373	1
7a	plate mounting handle	004-7381	2
8	screw, 1/4"-20 x 1.00	632-0005	2
9	washer, 1/4" external lock	632-0207	2
10	louvered panel, rear	004-7317	1
11	screw, #10-24 x .62	632-0037	2
12	washer, #10, lock, inside star	932-1061	2
13	cord w/plug, NEMA 6-20P, 240V, 6'	619-0079	1
14	switch, 30A, double pole	219-4212	1
15	light, service, 250v	619-0238	1
16	light, pilot, red, 1/2", 250v	619-0237	2
17	motor, 208-230V/60Hz/single phase	616-0017	1
18	switch, toggle, 20A	619-0152	1
19	thermostat, 165°F-205°F	619-0181	1
20	thermostat, 235°F-275°F	619-0182	1
21	switch, high limit, 350°F	619-0183	1
22	screw, #6-32 x 37	932-1001	8
23	nut, #6-32, hex lock	932-1010	8
24	nut, hex, #8-32, s/s	632-0121	4
25	washer, #10, inside star lock	932-1061	4
26	caster, 5", swivel w/brake, polyolefin	323-4161	2
27	caster, 5", rigid, polyolefin	623-0211	2
28	fan wheel	616-0005	1
29	heater guard, perforated	004-0016	1
30	heating element, 208V/2600W (standard)	619-0219	1
31	screw, 5/16"-18 x .75	632-0019	16
32	screw, #10-32 x .62	932-1091	3
33	bumper, wrap-around	623-0166	8.75'
34	bumper insert, aluminum	605-0004	8.75'
35	screw, #10-32 x 1.25	632-0006	20
36	gasket, lid, magnetic	670-0063	1
37	screw, #8-32 x .50	932-1155	20
38	harness, wiring	618-0002	1
39	pin hinge, brass	323-4360	2
	resistor (50 Hertz models only)	619-0271	1

REPLACEMENT PARTS: HH04



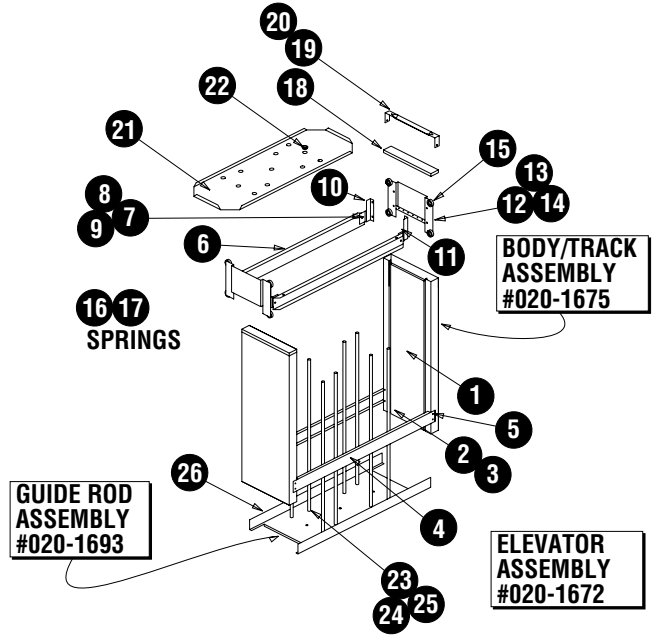
KEY	DESCRIPTION	PART #	QTY.
1	lid assembly	020-1667	1
2	hinge, left hand	004-8717	2
3	hinge, right hand	004-7375	2
4	screw, 1/4-20 x .5	632-0017	8
5	handle, lid	004-7378	1
6	spot nut	932-1365	2
7	handle, push/pull	004-6373	1
8	screw, 1/4"-20 x 1.00	632-0005	2
9	washer, 1/4" external lock	632-0207	2
10	louvered panel, rear	004-7270	1
11	screw, #10-24 x .62	632-0037	3
12	washer, #10, lock, inside star	932-1061	3
13	cord w/plug, NEMA 6-20P, 240V, 6'	619-0079	1
14	switch, 30A, double pole	219-4212	1
15	light, service, 250v	619-0238	1
16	light, pilot, red, 1/2", 250v	619-0237	2
17	motor, 208-230V/60Hz/single phase	616-0017	1
18	switch, toggle, 20A	619-0152	1
19	switch, high limit, 350°F	619-0183	1
20	thermostat, 235°F-275°F	619-0182	1
21	thermostat, 165°F-205°F	619-0181	1
22	screw, #6-32 x 37	932-1001	6
23	nut, #6-32, hex lock	932-1010	6
24	nut, hex, #8-32, s/s	632-0121	4
25	washer, #10, shake proof	932-1061	4
26	caster, 5", swivel w/brake, polyolefin	623-0210	2
27	caster, 5", rigid, polyolefin	623-0211	2
28	fan wheel	616-0005	1
29	heater guard, perforated	004-0010	1
30	heating element, 240V/3200W	619-0272	1
31	screw, 5/16"-18 x .75	632-0019	16
32	screw, #10-32 x .62	932-1091	3
33	bumper, wrap-around	623-0166	10.75
34	bumper insert, aluminum	605-0004	10.75
35	screw, #10-32 x 1.25	632-0006	20
36	gasket, lid, magnetic	670-0064	1
37	screw, #8-32 x .50	932-1155	26
38	harness, wiring	618-0002	1
39	pin hinge, brass resistor (50 Hertz models only)	323-4360 619-0271	2 1

REPLACEMENT PARTS: ELEVATORS (HH02 & HH04)



HH02 Elevator

KEY	DESCRIPTION	PART #	QTY.
1	cover, removable	004-2078	2
2	screw, #6-32 x .37	632-0048	4
3	nut, self retaining	619-0249	4
4	brace, bottom	004-2095	2
5	screw, #10-32 x .50	932-1355	8
6	Channel, carrier support	004-2093	2
7	screw, shoulder, 1/4"-20	632-0023	4
8	washer, 1/4"-20	932-1059	8
9	Nut, 1/4", split lock	932-1035	12
10	mounting bracket, left-hand	004-2079	2
11	mounting bracket, right-hand	004-2080	2
12	carrier bracket, spring mount	004-2441	2
13	screw, 1/4"-20, zinc, hex	932-1150	8
14	nut, 1/4"-20, zinc, hex	932-1035	8
15	bearing, concave, w/mounting screw	623-0339	8
16	spring, 34.3oz/in	619-0010	6
17	spring, 0.58 lb/in	619-0201	6
18	top assembly, removable	020-1682	2
19	handle	004-7319	2
20	screw, #8 x .75	932-1238	4
21	tray assembly	020-1680	1
22	bushing, .75	623-0247	6
23	rod, guide	004-6322	6
24	nut, 1/4"-20, spot	932-1105	6
25	stud, 1/4"-20 x .37	932-1338	6
26	base, guide rods	004-2083	1



HH04 Elevator

KEY	DESCRIPTION	PART #	QTY.
1	cover, removable	004-2078	2
2	screw, #6-32 x .37	632-0048	4
3	nut, self retaining	619-0249	4
4	brace, bottom	004-2094	2
5	screw, #10-32 x .50	932-1355	8
6	Channel, carrier support	004-2092	2
7	screw, shoulder, 1/4"-20	632-0023	4
8	washer, 1/4"-20	932-1059	8
9	Nut, 1/4", split lock	932-1035	16
10	mounting bracket, left-hand	004-2079	2
11	mounting bracket, right-hand	004-2080	2
12	carrier bracket, spring mount	004-2441	2
13	screw, 1/4"-20, zinc, hex	932-1150	8
14	nut, 1/4"-20, zinc, hex	932-1035	8
15	bearing, concave, w/mounting screw	623-0339	8
16	spring, 34.3oz/in	619-0010	6
17	spring, 0.58 lb/in	619-0201	6
18	top assembly, removable	020-1682	2
19	handle	004-7319	2
20	screw, #8 x .75	932-1238	4
21	tray assembly	020-1681	1
22	bushing, .75	623-0247	8
23	rod, guide	004-6322	8
24	nut, 1/4"-20, spot	932-1105	11
25	stud, 1/4"-20 x .37	932-1338	8
26	base, guide rods	004-2082	1



STANDARD LABOR GUIDELINES TO REPAIR OR REPLACE PARTS ON DELFIELD EQUIPMENT

Advice and recommendations given by Delfield Service Technicians do not constitute or guarantee any special coverage.

- A maximum of 1-hour is allowed to diagnose a defective component.
- A maximum of 1-hour is allowed for retrieval of parts not in stock.
- A maximum travel distance of 100 miles round trip and 2-hours will be reimbursed.
- Overtime, installation/start-up, normal control adjustments, general maintenance, glass breakage, freight damage, and/or correcting and end-user installation error will not be reimbursed under warranty unless pre-approved with a Service Work Authorization from Delfield. You must submit the number with the service claim.

LABOR OF 1-HOUR IS ALLOWED TO REPLACE:

- Thermostat
- Infinite Switch
- Door Jamb Switch
- Solenoid Coil
- Hi-limit/Thermal Protector Switch
- Fan Delay/Defrost Termination Switch
- Compressor Start Components and Overload Protector
- Defrost Timer
- Thermometer
- Gear Box
- Contactor/Relay
- Transformer
- Evaporator/Condenser Fan Motor and Blade
- Circulating Fan Motor and Blade
- Microprocessor Control
- Water Level Sensor/Probe
- Door Hinges, Locks, and Gaskets
- Condensate Element
- Springs/Lowerator

LABOR OF 2 HOURS TO REPLACE:

- Drawer Tracks/Cartridges
- Pressure Control
- Solenoid Valve
- Defrost Element
- Heating Element
- Locate/Repair Leak

LABOR OF 3 HOURS TO REPLACE:

- EPR or CPR Valve
- Expansion Valve
- Condenser or Evaporator Coil

LABOR OF 4 HOURS TO REPLACE

- Compressor

This includes recovery of refrigerant and leak check.

\$55.00 maximum reimbursement for refrigerant recovery (includes recovery machine, pump, torch, oil, flux, minor fittings, solder, brazing rod, nitrogen, or similar fees.)

REFRIGERANTS

- R22 A maximum of \$4.00/lb. or 25¢/oz. will be reimbursed.
- R134A A maximum of \$5.00/lb. or 31¢/oz. will be reimbursed.
- R404A A maximum of \$15.00/lb. or \$1.00/oz. will be reimbursed.

Standard One Year Warranty (One year service and labor)

The Delfield Company (“Delfield”) warrants to the Original Purchaser of the Delfield product (herein called the “Unit”) that such Unit, and all parts thereof, will be free from defects in material and workmanship under normal use and service for a period of one (1) year from the date of shipment of the Unit to the Original Purchaser or, if the Original Purchaser returns the warranty card completely filled out including the date of installation within thirty (30) days of receipt of the Unit, one (1) year from the date of installation. During this one year warranty period, Delfield will repair or replace any defective part or portion thereof returned to Delfield by the Original Purchaser which Delfield determines was defective due to faulty material or workmanship. The Original purchaser will pay all labor, crating, freight and related costs incurred in the removal of the Unit of defective component and shipment to Delfield, except that during a period of either ninety (90) days from the date of shipment of the Unit to the Original Purchaser or, if the Original Purchaser returns the warranty card completely filled out including the date of installation within thirty (30) days of receipt of the Unit, ninety (90) days from the date of installation Delfield will pay all related labor costs. Delfield will pay the return costs if the Unit or part thereof was defective.

The term “Original Purchaser” as used herein means that person, firm, association, or corporation for whom the Unit was originally installed.

This warranty does not apply to any Unit or part thereof that has been subjected to misuse, neglect, alteration, or accident, such as accidental damage to the exterior finish, operated contrary to the recommendations specified by Delfield; or repaired or altered by anyone other than Delfield in any way so as to, in Delfield’s sole judgement, affect its quality or efficiency. This warranty does not apply to any Unit that has been moved from the location where it was originally installed. This warranty also does not cover the refrigerator drier or the light bulbs used in the Unit. The warranty is subject to the user’s normal maintenance and care responsibility as set forth in the Service and Installation Manual, such as cleaning the condenser coil, and is in lieu of all other obligations of Delfield. Delfield neither assumes, nor authorizes any other person to assume for Delfield, any other liability in connection with Delfield’s products.

Removal or defacement of the original Serial Number or Model Number from any Unit shall be deemed to release Delfield from all obligations hereunder or any other obligations, express or implied.

Parts furnished by suppliers to Delfield are guaranteed by Delfield only to the extent of the original manufacturer’s express warranty to Delfield. Failure of the Original Purchaser to receive such manufacturer’s express warranty to Delfield. Failure of the Original Purchaser to receive such manufacturers warranty shall in no way create any warranty, expressed or implied, or any other obligation or liability on Delfield’s part in respect thereof.

IF THE CUSTOMER IS USING A PART THAT RESULTS IN A VOIDED WARRANTY AND A DELFIELD AUTHORIZED REPRESENTATIVE TRAVELS TO THE INSTALLATION ADDRESS TO PERFORM WARRANTY SERVICE, THE SERVICE REPRESENTATIVE WILL ADVISE CUSTOMER THE WARRANTY IS VOID. SUCH SERVICE CALLS WILL BE BILLED TO CUSTOMER AT THE AUTHORIZED SERVICE CENTER’S THEN APPLICABLE TIME AND MATERIALS RATES. CONSIDER: CUSTOMER MAY INITIATE A SERVICE AGREEMENT WITHOUT PARTS COVERAGE.

If shipment of a replacement part is requested prior to the arrival in the Delfield factory of the part claimed to be defective, the Original Purchaser must accept delivery of the replacement part of a C.O.D. basis, with credit being issued after the part has been received and inspected at Delfield’s plant and determined by Delfield to be within this warranty.

Under no condition does this warranty give the Original Purchaser the right to replace the defective Unit with a complete Unit of the same manufacturer or of another make. Unless authorized by Delfield in writing, this warranty does not permit the replacement of any part, including the motor-compressor, to be made with the part of another make or manufacturer.

No claims can be made under this warranty for spoilage of any products for any reason, including system failure.

The installation contractor shall be responsible for building access, entrance and field conditions to insure sufficient clearance to allow any hood(s), vent(s), or Unit(s) if necessary, to be brought into the building. Delfield will not be responsible for structural changes or damages incurred during installation of the Unit or any exhaust system.

Delfield shall not be liable in any manner for any default or delay in performance hereunder caused by or resulting from any contingency beyond Delfield’s control, including, but not limited to, war, governmental restrictions or restraints, strike, lockouts, injunctions, fire, flood, acts of nature, short or reduced supply of raw materials, or discontinuance of the parts by the original part manufacturer.

Except as provided in any Additional Four Year Protection Plan, if applicable, and the Service Labor Contract, if applicable, the foregoing is exclusive and in lieu of all other warranties, whether written or oral, express or implied. This warranty supersedes and excludes any prior oral or written representations or warranties. Delfield expressly disclaims any implied warranties of merchantability, fitness for a particular purpose of compliance with any law, treaty, rule or regulation relating to the discharge of substances into the environment. The sole and exclusive remedies of any person relating to the Unit, and the full liability of Delfield for any breach of this warranty, will be as provided in this warranty.

Other than this Delfield Standard One Year Limited Warranty, any applicable Delfield Additional Four Year Protection Plan or applicable Delfield Service Labor Contract, the Original Purchaser agrees and acknowledges that no other warranties are offered or provided in connection with or for the unit or any other part thereof.

In no event will Delfield be liable for special, incidental or consequential damages, or for damages in the nature of penalties.

IF DURING THE WARRANTY PERIOD, CUSTOMER USES A PART FOR THIS DELFIELD EQUIPMENT OTHER THAN AN UNMODIFIED NEW OR RECYCLED PART PURCHASED DIRECTLY FROM DELFIELD OR ANY OF ITS AUTHORIZED SERVICE CENTERS AND/OR THE PART BEING USED IS MODIFIED FROM ITS ORIGINAL CONFIGURATION, THIS WARRANTY WILL BE VOID. FURTHER, DELFIELD AND ITS AFFILIATES WILL NOT BE LIABLE FOR ANY CLAIMS DAMAGES OR EXPENSES INCURRED BY THE CUSTOMER WHICH ARISE DIRECTLY OR INDIRECTLY, IN WHOLE OR IN PART, DUE TO THE INSTALLATION OF ANY MODIFIED PART AND/OR PART RECEIVED FROM AN UNAUTHORIZED SERVICE CENTER. If the warranty becomes void, Customer may purchase from Delfield, if available, a Service Agreement or service at the then current time and materials rate.

For more information on Delfield warranty’s log on and check out the service section of our web site at www.delfield.com.



Additional Four Year Protection Plan (for Motor-Compressor only)

Delfield Model#	Serial #	Installation Date

In addition to the Standard One Year Warranty on the Motor-Compressor contained in the above listed Delfield product (the "Unit"), The Delfield Company ("Delfield") also agrees to repair, or exchange with similar or interchangeable parts in design and capacity at Delfield's option, the defective Motor-Compressor contained in the Unit (the "Motor-Compressor"), or any part thereof, for the Original Purchaser only, at any time during the four (4) years following the initial one (1) year period commencing on the date of installation for the Original Purchaser. Failure of the Original Purchaser to register the registration card containing the Original Purchaser's name, address, date of installation, model number and serial number of the Unit containing the Motor-Compressor within 30 days from the date of installation shall void this warranty. This additional warranty is only available if the Motor-Compressor is inoperative due to defects in material or factory workmanship, as determined by Delfield in its sole judgement and discretion. The Original Purchaser shall be responsible for returning the defective Motor-Compressor to Delfield prepaid, F.O.B. at the address shown on the back cover of this manual.

The term "Original Purchaser" as used herein means that person, firm, association, or corporation for whom the Unit was originally installed.

The term "Motor-Compressor" as used herein does not include unit base, air or water cooled condenser, receiver, electrical accessories such as relay, capacitors, refrigerant controls, or condenser fan/motor assembly. This warranty does not cover labor charges incidental to the replacement of parts. This warranty further does not include any equipment to which said condensing unit is connected, such as cooling coils, temperature controls or refrigerant metering devices. This warranty shall be void if the Motor-Compressor, in Delfield's sole judgement, has been subjected to misuse, neglect, alteration or accident, operated contrary to the recommendations specified by the Unit manufacturer, repaired or altered by anyone other than Delfield in any way so as, in Delfield's sole judgment, to affect its quality or efficiency or if the serial number has been altered, defaced or removed. This Warranty does not apply to a Motor-Compressor in any Unit that has been moved from the location where it was originally installed. The addition of methyl chloride to the condensing unit or refrigeration system shall void this warranty.

General Conditions

Delfield shall not be liable in any manner for any default or delay in performance hereunder caused by or resulting from any contingency beyond Delfield's control, including, but not limited to, war, governmental restrictions or restraints, strike, lockouts, injunctions, fire, flood, acts of nature, short or reduced supply of raw materials, or discontinuance of any part or the Motor-Compressor by the unit manufacturer.

Replacement of a defective Motor-Compressor is limited to one (1) Motor-Compressor by us during the four (4) year period. Delfield shall replace the Motor-Compressor at no charge.

This warranty does not give the Original Purchaser of the Motor-Compressor the right to purchase a complete replacement Motor-Compressor of the same

make or of another make. It further does not permit the replacement to be made with a Motor-Compressor of another kind unless authorized by Delfield. In the event Delfield authorizes the Original Purchaser to purchase a replacement Motor-Compressor locally, only the wholesale cost of the Motor-Compressor is refundable.

Expressly excluded from this warranty are damages resulting from spoilage of goods.

Except as provided in any applicable Standard One Year Limited Warranty or applicable Service Labor Contract, the foregoing is exclusive and in lieu of all other warranties, whether written or oral, express or implied. This Warranty supersedes and excludes any prior oral or written representations or warranties. Delfield expressly disclaims any implied warranties of merchantability, fitness for a particular purpose or compliance with any law, treaty, rule or regulation relating to the Motor-Compressor, and the full liability of Delfield for any breach of this warranty, will be as provided in this warranty.

Other than any applicable Delfield Standard One year Limited Warranty, this Delfield Additional Four Year Protection Plan and any applicable Delfield Service Labor Contract, the Original Purchaser agrees and acknowledges that no other warranties are offered or provided in connection with or for the Motor-Compressor or any part thereof.

In no event will Delfield be liable for special, incidental or consequential damages, or for damages in the nature of penalties.



NOTES:



Mt. Pleasant, MI



Covington, TN

Thank you for choosing Delfield!

Help is a phone call away. Help our team of professional, courteous customer service reps by having your model number and serial number available at the time of your call (800) 733-8829.

Model: _____ S/N: _____

Installation Date: _____



For a list of Delfield's authorized parts depots,
visit our website at www.delfield.com.

