



**IMPORTANT FOR FUTURE REFERENCE**

Please complete this information and retain this manual for the life of the equipment:

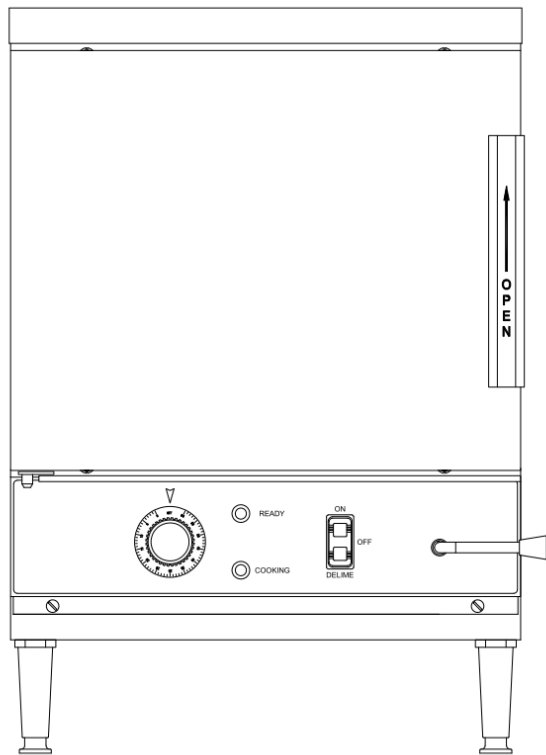
Model #: \_\_\_\_\_

Serial #: \_\_\_\_\_

Date Purchased: \_\_\_\_\_

## PARTS LIST

### Electric Counter Convection Steamer SXB!( A



#### WARNING

Improper installation, adjustment, alteration, service or maintenance can cause property damage, injury or death. Read the installation, operating and maintenance instructions thoroughly before installing or servicing this equipment.

#### CROWN FOOD SERVICE EQUIPMENT

 A Middleby Company

70 Oakdale Road, Downsview (Toronto) Ontario, Canada, M3N 1V9

Telephone: 919-762-1000

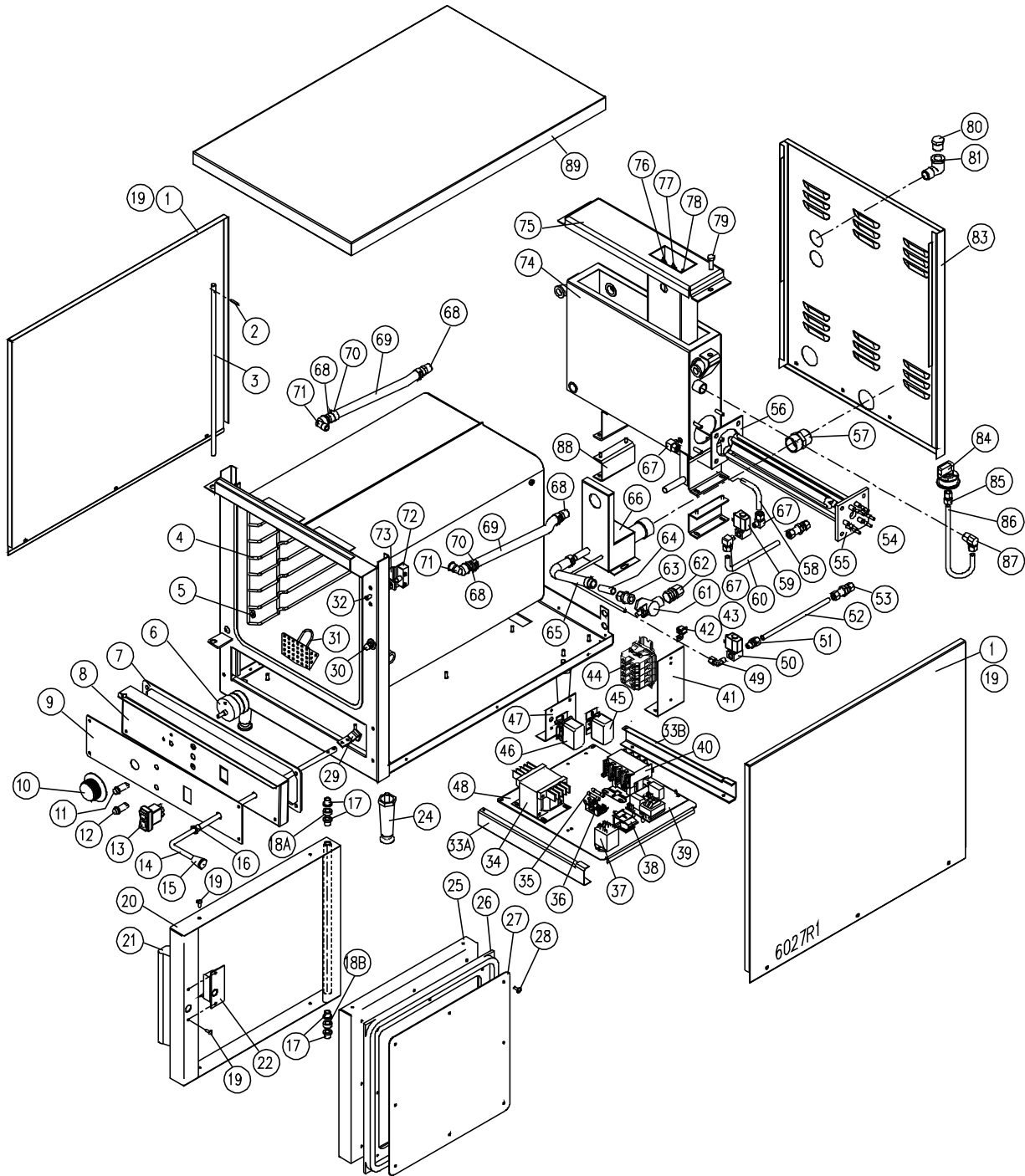
[www.crownsteamgroup.com](http://www.crownsteamgroup.com)

Printed in Canada



PARTS LIST, ELECTRIC COUNTER CONVECTION STEAMER, MODEL SXN-4M

**FIGURE 1**



PARTS LIST, ELECTRIC COUNTER CONVECTION STEAMER, MODEL SXN-4M

**FIGURE 1**

<u>ITEM</u>	<u>PART NO.</u>	<u>DESCRIPTION</u>	<u>QTY.</u>
1.	7964-1	Cover, Side	2
2.	1-T5U6	Roll Pin	1
3.	3977-4	Hinge Rod	1
4.	2681-2	Pan Rack	2
5.	4721-1	Rack Hanger Pin Assembly	6
**	6. 4-T209-1	Timer, 60 Minutes, 240V, 50/60 Hz	1
	9386-2	Timer, 120 Minutes, 240V, 50/60 Hz, Optional	1
*	9109-1	Rotary Shaft Seal, 1/4	1
7.	5923-1	Front Panel Gasket	1
8.	8183-1	Front Cover	1
**	9. 8182-1	Control Panel Decal, Red	1
	8182-2	Control Panel Decal, Burgundy	1
**	10. 4103-1	Timer Knob, 60 Minutes, 50 Hz, Optional	1
	4104-1	Timer Knob, 60 Minutes, 60 Hz	1
	9387-1	Timer Knob, 120 Minutes, 60 Hz, Optional	1
11.	4-PL04-1	Pilot Light, Green, 250V	1
12.	4-PL07-1	Pilot Light, Red, 250V	1
13.	9130-1	Rocker Switch DPDT, 250V	1
14.	6017-1	Handle, Drain	1
15.	4935-1	Knob	1
16.	9041-2	Plastic Bushing	1
17.	8-5078	Door Bushing	4
18A.	5716-1	Spacer, Upper	1
18B.	5717-1	Spacer, Lower	1
19.	M33S-1032-12	Truss, Hd. Screw, 10-32 UNF x 1/2	12
20A.	8-5076-7	Door Assembly	1

PARTS LIST, ELECTRIC COUNTER CONVECTION STEAMER, MODEL SXN-4M

<u>ITEM</u>	<u>PART NO.</u>	<u>DESCRIPTION</u>	<u>QTY.</u>
20.	2837-1	Outer Door Shell	1
21.	3903-2	Door Handle Assembly	1
*	3646-1	Decal, Door Handle	1
*	4090-2	Door Handle	1
*	4089-2	Door Handle Plate	1
*	M68S-1420-134	Socket Hd. Screw 1/4-20 UNC x 1-3/4	2
*	M68S-1420-34	Socket Hd. Screw, 1/4 - 20 UNC x 3/4	1
*	4088-1	Door Handle Spacer	2
*	S01S-14	Split Lockwasher, 1/4	2
*	9030-1	Hex Nut, 1/4 - 20 UNC	2
22.	8-5068-9	Latch Assembly	1
*	23. 3502-1	Steam Diverter	2
24.	5-FS66	Adjustable Leg	4
25.	8-5065-7	Door Panel	1
26.	8-5063-7	Door Gasket	1
27.	8-5064-7	Gasket Retaining Plate	1
28.	9-1011-1	Gasket Panel. Screw, 10-32 UNF x 1/2	8
29.	6018-1	Valve Handle Bracket	1
*	M68S-1032-58	Socket Hd Screw 10-32 UNC x 5/8	2
30.	8-5021	Striker	1
*	8-5022	Front Washer	1
*	S01X-12	Split Lockwasher, 1/2	1
*	1-89S0	Hex Nut, 1/2 - 20 UNF	1
31.	5224-2	Compartment Strainer	1
32.	9-3336	Push Rod c/w Retaining Rings	1
33A.	7962-1	Rail Bracket, Front	1

PARTS LIST, ELECTRIC COUNTER CONVECTION STEAMER, MODEL SXN-4M

<u>ITEM</u>	<u>PART NO.</u>	<u>DESCRIPTION</u>	<u>QTY.</u>	
33B.	7962-2	Rail Bracket, Rear	1	
* **	34.	4-T251	Transformer, 380/220V, 50/60 Hz. 100VA	1
		4-T251	Transformer, 415/240V, 50/60 Hz, 100VA	1
		4-T255	Transformer, 480/240V, 60 Hz, 100VA	1
**	35.	9092-2	Fuse, 2 Amp., 250V (208, 220, 240V)	2
		9092-2	Fuse, 2 Amp., 250V (380/220, 415V/240V)	1
		9001-2	Fuse, 1/2 Amp., 600V (380-480V)	2
**	36.	9068-1	Fuse Holder, 25A, 300V Max. (208, 220, 240V)	2
		9068-1	Fuse Holder, 25A, 300V Max. (380/220, 415/240V)	1
		9002-1	Fuse Holder, 30A, 600V (380, 415, 480)	2
	37.	9332-2	Relay DPDT, 240V	1
	38.	4742-1	Buzzer, 230V	1
**	39.	4038-3	Level Control Board, 208/240VAC, 10K, OHM	1
		5230-2	Level Control Board, 208/240/VAC, 1M, OHM	2
**	40.	4-CG42-1	Contactor, 4 Pole, (208 - 240V)	1
		9348-208	Contactor, 3 Pole, (380, 415, 480)	1
	41.	5917-1	Terminal Block Bracket	1
	42.	4-70EU	Ground Lug	1
	43.	4188-1	Earth/Ground I.D. Tag	1
	44.	6161-3	Modular Terminal Assembly, 3 Pole (380V-480V)	1
		Includes the following parts:		
		9374-1	Modular Terminal, Grey	3
		9375-1	End Plate	1
		9369-1	End Clamp	2
		9368-079	Mounting Rail, 79 mm	1

PARTS LIST, ELECTRIC COUNTER CONVECTION STEAMER, MODEL SXN-4M

<u>ITEM</u>	<u>PART NO.</u>	<u>DESCRIPTION</u>	<u>QTY.</u>	
	6161-4	Modular Terminal Assembly, 4 Pole (208V-240V)	1	
		Includes the following parts:		
	9374-1	Modular Terminal, Grey	4	
	9375-1	End Plate	1	
	9369-1	End Clamp	2	
	9368-098	Mounting Rail, 98 mm	1	
	6161-4N	Modular Terminal Assembly, 3 Pole w/Neutral (380/220V-415/240V)	1	
		Includes the following parts:		
	9374-1	Modular Terminal, Grey	3	
	9374-2	Modular Terminal, Blue	1	
	9375-1	End Plate	1	
	9369-1	End Clamp	2	
	9368-098	Mounting Rail, 98 mm	1	
45.	9128-1	High Limit Thermostat	1	
46.	9126-1	Operating Thermostat	1	
47.	5916-1	Thermostat Bracket	1	
48.	7961-1	Component Mounting Board	1	
49.	3-694A	Elbow, 90°, Brass, 1/4 C x 1/8 MPT	1	
50.	5162-2	Solenoid Valve, Cooling, 240V	1	
51.	3-686A	Connector, Brass, 3/8 C x 1/8 MPT	1	
52.	9705-38-070	Tube, 3/8 Copper, Condenser IN	1	
53.	3-776	Bulkhead Union, Brass, 3/8 C	2	
54.	9030-1	Hex Nut, 1/4 - 20 UNF	4	
**	55.	7972-1008	Heating Element, 10 kW, 208V	1
		7972-1020	Heating Element, 10 kW, 380/220V	1

PARTS LIST, ELECTRIC COUNTER CONVECTION STEAMER, MODEL SXN-4M

<u>ITEM</u>	<u>PART NO.</u>	<u>DESCRIPTION</u>	<u>QTY.</u>
	7972-1040	Heating Element, 10 kW, 415/240V	1
	7972-1077	Heating Element, 10 kW, 480/277V	1
56.	5869-1	Element Gasket	1
57.	4771-1	Adapter, 1 M x 1 M	1
58.	6316-1	Tube, 3/8 Copper, Filling	1
59.	5162-2	Solenoid Valve, Fill, 240V	1
60.	6315-1	Tube, 3/8 Copper, Generator IN	1
61.	9336-1	Ball Valve, Drain	1
62.	3-688D	Connector, Tube to Male Pipe	1
63.	3-668D	Connector, Tube to Female Pipe	1
64.	9705-19-014	Tube, 1/2 x 1-1/2 Lg.	1
65.	9268-052	Silicone Hose, 1/2 I.D. x 5-1/4	1
66.	7965-1	Drain Box	1
67.	3-696A	Elbow 90°, Brass, 3/8 C x 1/8 MPT	3
68.	3-1258C	Hose Coupler, Brass 1/2 x 3/8 MPT	4
69.	9268-114	Silicone Hose, Left Hand, 1/2 I.D. x 11-1/2	2
70.	9337-13ST	Hose Clamp, CTL-13	6
71.	3-116CB	Forged Str. Elbow 90°, Brass 3/8 FPT x 1/4 MPT	2
72.	9-3213	Limit Switch	1
73.	5908-1	Bracket, Door Switch	1
74.	7968-1	Generator Tank	1
75.	7971-1	Tank Cover	1
*	5920-1	Tank Gasket	1
76.	3738-3	Probe, Low Level Cut-Off, 5 Lg.	1
77.	3738-2	Probe, Low Level, 4-1/4 Lg.	1
78.	4-LLP2	Probe, High Level, 3-11/16	1

PARTS LIST, ELECTRIC COUNTER CONVECTION STEAMER, MODEL SXN-4M

<u>ITEM</u>	<u>PART NO.</u>	<u>DESCRIPTION</u>	<u>QTY.</u>
79.	M50S-51618-1	Hex Hd. Bolt, 5/16 - 18 UNC x 1 Lg.	2
80.	3-121D	Hex Hd. Plug, Brass, 1/2 NPT	1
81.	3-116D	Forged Street Elbow, 90°, Brass 1/2 NPT	1
82.	4195-3	Label, Delime	1
83.	7960-1	Back Panel	1
84.	5445-1	Pressure Switch, Safety	1
85.	3-666A	Connector Brass, 3/8 C x 1/8 FPT	1
86.	5918-1	Pressure Switch Tube, 3/8	1
87.	3-696C	Elbow Brass, 90°, 3/8 C x 3/8 MPT	1
88.	6024-1	Support Channel	2
89.	7963-1	Top Cover	1
*	M23S-1420-12	Binding Hd. Screw, 1/4 - 20 UNC x 1/2	3
*	90. 9084-1	Nut Cage, 1/4 - 20 UNC	3
*	91. 4204-70	Wire Harness, Control Circuit	1
*	92. 4204-71	Wire Harness, Load, 208 - 240 VAC	1
*	93. 4204-72	Wire Harness, Load, 380 - 480 VAC	1
*	94. 9096-1	Toggle Switch (Optional - Constant Steam)	1
* NOT SHOWN			
** SELECT AS REQUIRED			