

OPERATING and MAINTENANCE INSTRUCTIONS
Model: H137 series Humidity Holding Hot Cabinet - H137WSUA5DMFBC

BUC-EE'S PROGRAMMING REVISION J-08

ELECTRICAL SPECIFICATIONS:

Model No.	Volts	Watts	Amps	Hertz	Phase	NEMA
H-137-WSUA-5DMFBC	120	2000	16.7	60	1	5-20P

HOW TO INSTALL UNIT:

1. Place cabinet on level floor, in a well ventilated area.
2. Unpack and install inner pan slides parts.
3. Plug cord end into proper wall outlet.

HOW TO CHANGE FROM °C TO °F (if needed)

1. Push the switch on; the light will come on.
2. Push and hold the “SET” button and the button in the lower left hand corner together for 5 seconds. You are now entered into the menu.
3. Scroll over the”Unit” and change it to “C” , then scroll to the “END”.



Air is VERY HOT when door is opened.

FIRST TIME OPERATION:

NOTE: A new cabinet needs to “burn off” manufacturing oils and excess adhesive before its first use. ***Do NOT load food into cabinet until this has been done!***

1. Push the switch on; the light will come on.

NOTE: The letters “LOTPR” (Low Temperature) will show on the control panel until it reaches 80°F (26°C).

2. Push and hold knob for 5 seconds, then turn to show 220°F. Push the knob to set the temperature. Run the unit for one (1) hour.
3. Push the switch off the unit off and let cool.
4. Wipe the inside clean with detergent and hot water.

Insulated Hot Cabinets	FL-2355-BC
Rev. 2 (3/21)	Page 2 of 9

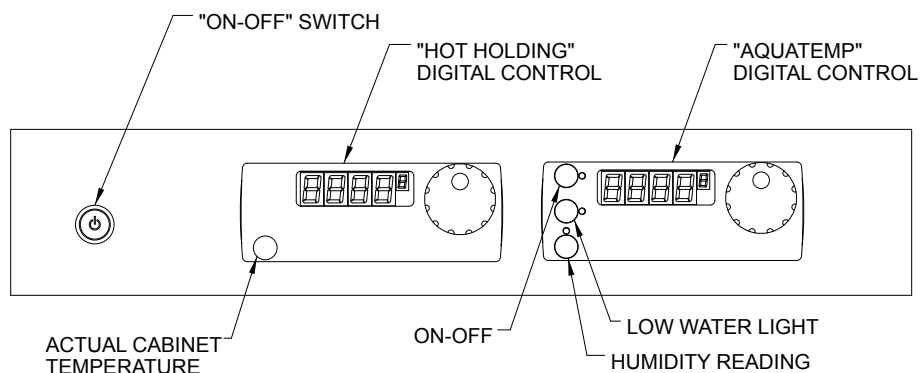


5925 Heisley Road • Mentor, OH 44060-1833

OPERATING and MAINTENANCE INSTRUCTIONS

Model: H137 series Humidity Holding Hot Cabinet

BUC-EE'S PROGRAMMING REVISION J-08



HOW TO HOLD:

No water is needed in pan.

1. Push the switch on; the light will come on.

NOTE: The letters "LOTPR" will show on the control panel until it reaches 80°F (26°C).

2. Push and hold knob for 5 seconds, then turn to a temperature between 140°F (60°C) and 220°F (104°C). Push the knob to set the temperature.
3. Preheat the cabinet for 30 minutes.

NOTE: Press the "Display" button to see the actual temperature inside the cabinet.

HOW TO HOLD WITH HUMIDITY:

Fill water pan with 4 gallons (15 liters) of HOT water.



1. Push the switch on; the light will come on.

NOTE: The letters "LOTPR" will show on the control panel until it reaches 80°F (26°C).

2. Push and hold knob for 5 seconds, then turn to a temperature between 80°F (26°C) and 220°F (104°C). Push the knob to set the temperature.
3. Push and hold knob for 5 seconds, then turn knob to desired humidity value setting. Push the knob to set the value number.
4. Preheat the cabinet for 1/2 hour (30 minutes).

NOTE: This cabinet operates with **air temperature priority**. Humidity will only start after cabinet is fully preheated. If cold or room temp water is used, humidity build-up time will be longer.

DIGITAL CONTROL NOTES

*Press the "display" button to see the actual temperature inside the cabinet (press again to shut off).

*Press the "display actual" button to see the approximate relative humidity value (press again to shut off).

*Small letters in upper right corners of the displays are:

Hot Holding control: "S" = setpoint temperature
"A" = actual temperature

AquaTemp control: "S" = setpoint reading
(in increments of 5)
"A" = approximate relative humidity reading

NOTE: When the low water light is on, the "A" numbers will not be close to an accurate reading, and the water heater will not heat.

NOTE: These settings are based on laboratory conditions and may differ from conditions at the point of use. Experiment with the settings to determine what is best for your application.

OPERATING and MAINTENANCE INSTRUCTIONS

Model: H137 series Humidity Holding Hot Cabinet - H137WSUA5DMFBC

BUC-EE'S PROGRAMMING REVISION J-08

How to use the Automatic Water Fill:

There is a water fill connection under the bottom left rear of the oven. Remove the plug on the end of the connector.

1. Connect the plastic tubing provided to the connector and the other end to your water supply. Turn water supply on.
2. Press and hold both the DISPLAY button and the knob of the AquaTemp humidity control for five seconds.
3. Turn the knob until when the display shows FILL, select "Y" for yes and press the knob to set.
4. Go to END to exit the menu. Auto water fill should start.

To shut down:

1. Press and hold both the DISPLAY button and the knob of the Aquatemp humidity control.
2. Turn the knob to FILL and push to enter. Select "N" for no; go to END to exit the menu.
3. Turn off your water supply and clean out the water pan after it cools.

NOTES: It is recommended to use treated water to prevent failure of fill valve. If water supply pressure is high, it is recommended to regulate it to make sure the fill valve closes reliably.

HOW TO TURN UNIT OFF:

Push switch off; light will go out.

HOW TO CLEAN THE UNIT:

	Soil	Cleaner	Method
CABINET Inside and Outside (Stainless Steel)	ROUTINE CLEANING	Soap, Ammonia, or mild *detergent and water.	1. Sponge on with cloth. 2. Rinse with water. 3. Wipe dry.
	STUBBORN SPOTS AND STAINS	Mild abrasive made for stainless steel.	1. Apply with damp sponge or cloth. 2. Rub lightly.
	BURNT-ON FOODS OR GREASE	Chemical oven cleaner for stainless steel.	Follow oven cleaner manufacturer's directions.
	HARD WATER SPOTS and SCALE	Vinegar	1. Swab or wipe with cloth. 2. Rinse and dry.

**Mild detergents include soaps and non-abrasive cleaners.*

NOTE: Gaskets are removable for cleaning.

DAILY MAINTENANCE:


WATER PAN


Drain, wipe and fill water pan daily. (NO ice shocking! Please reference FL-2416-BC)

1. Push hose onto drain nozzle under the cabinet base.
2. Turn knob to open the drain.

CABINET

1. Wipe the inside of the cabinet after daily use.
2. **LEAVE DOORS SLIGHTLY OPEN TO FULLY DRY INTERIOR.**

 **WARNING**

 **CAUTION**

BEFORE CLEANING CABINET:

1. Allow cabinet to cool.
2. Do NOT hose cabinet with water.
3. Do NOT get water on controls.
4. Do NOT use abrasives or harsh chemicals.

Delime or descale water pan parts as required, to prevent damaging build-up. WARRANTY COVERAGE MAY BE AFFECTED WITHOUT PROPER CLEANING.

Cleaning hints:

1. Wipe up spills as soon as possible.
2. Clean cabinet regularly to avoid heavy dirt build-up.
3. Make a test spot with cleaner.
4. Follow manufacturer's directions on cleaner.
5. Do not mix cleaners.
6. Avoid drips and splashes.
7. Do not use "Cres Clean" on plastic parts or labels.

Insulated Hot Cabinets	FL-2355-BC
Rev. 2 (3/21)	Page 4 of 9



5925 Heisley Road • Mentor, OH 44060-1833

OPERATING and MAINTENANCE INSTRUCTIONS

Model: H137 series Humidity Holding Hot Cabinet

BUC-EE'S PROGRAMMING REVISION J-08

HOW TO ADJUST THE DOOR LATCH:

1. For vertical (up and down movement) adjustment:
 - a. Loosen (2) screws located in magnetic strike.
 - b. Move strike up or down for alignment to magnet on latch.
 - c. Tighten screws to secure
2. For horizontal (greater or lesser magnetic draw) adjustment:
 - a. Loosen (4) screws in door latch.
 - b. Move latch forward or backward to adjust magnetism.
 - c. Tighten screws to secure.

Daily

Drain water pan and clean interior of unit as per instructions in FL-2416-BC.

Turn off unit and allow to cool for 30 minutes with door open. **DO NOT ICE SHOCK!**

Add cool tap water to temper tank prior to draining. ***Must be drained prior to moving the unit or spillage will occur.***

Weekly

Check hinges and latch and adjust as needed per instructions in FL-2416-BC

Monthly

Check that cooling fans are operating when unit power switch is on.

If unit is *NOT* working, first check the following causes:

1. Cord is unplugged from wall outlet.
2. Circuit breaker/fuse to wall outlet is blown.
3. Switch is turned off.
4. Fuse on back of unit is blown.

NOTE: Vent fans will not operate until the control compartment requires ventilation to limit temperatures. Replacement of electrical components must be done by a qualified electrician.

Insulated Hot Cabinets	FL-2355-BC
Rev. 2 (3/21)	Page 5 of 9



5925 Heisley Road • Mentor, OH 44060-1833

OPERATING and MAINTENANCE INSTRUCTIONS
Model: H137 series Humidity Holding Hot Cabinet

BUC-EE'S PROGRAMMING REVISION J-08

	WARNING	
RISK OF FIRE OR ELECTRIC SHOCK DO NOT OPEN		
<p>WARNING: TO REDUCE THE RISK OF FIRE OR ELECTRIC SHOCK,</p> <p>DO NOT REMOVE COVER (OR BACK)</p> <p>NO USER-SERVICEABLE PARTS INSIDE</p> <p>REPAIR SHOULD BE DONE BY AUTHORIZED SERVICE PERSONNEL ONLY</p>		

TROUBLE-SHOOTING CHART:

FAILURE:	POSSIBLE CAUSE:
1. Switch light or control display does NOT light up.	1a. Circuit breaker/fuse to wall outlet is blown 1b. Cord is unplugged from wall outlet. 1c. Switch is "OFF." 1d. Switch or control defective.
2. Unit gets too hot or won't shut off.	2a. Relay or control defective. UNPLUG UNIT FROM WALL OUTLET
3. Unit does not heat.	3. Defective heater, relay, blower or control.
4. No humidity	4a. Low water 4b. Air temperature set too high. 4c. Defective heater, relay or control.

Controller (Thermostats) Error codes:
 err 00 - Temperature probe defective
 err 01 - Water fill time out (Please reference FL-2369-BC)



5925 Heisley Road • Mentor, OH 44060-1833

Insulated Hot Cabinets	FL-2355-BC
Rev. 2 (3/21)	Page 6 of 9

OPERATING and MAINTENANCE INSTRUCTIONS
Model: H137 series Humidity Holding Hot Cabinet - H137WSUA5DMFBC

BUC-EE'S PROGRAMMING REVISION J-08

REPLACEMENT PARTS:

		<u>120V</u>	<u>208V</u>	<u>240V</u>
Blower Kit		0769-180-SS-K	0769-182-SS-K	0769-182-SS-K
Heater Kit, Air	2000W	0811-022-K	0811-185-K	0811-023-K
	1470W	0811-019		
Heater Kit, Water	1850W	0811-271	0811-278	0811-271
	1500W	0811-314		
High Limit (water pan)		0848-060	0848-060	0848-060
High Limit - 400°F		0848-033	0848-033	0848-033
Power Cord	2000W	0810-065-12-K	0810-039-07	0810-039-07
	1500W	0810-029-06		
Relay, Solid State		0857-136	0857-136	0857-136
Switch, Power		0808-125	0808-125	0808-125
Thermostat Control (Hot)		0848-092-40-K	0848-092-40-K	0848-092-40-K
Thermostat Control (Humidity)		0848-092-38-K	0848-092-38-K	0848-092-38-K
Thermostat Probe		0848-091-K	0848-091-K	0848-091-K
Terminal Block		0852-119	0852-119	0852-119
Transformer		0769-197	0769-197	0769-197
Vent Fan		0769-165	0769-174	0769-174
Water Pan Assembly		0756-037	0756-042	0756-037

Door, Complete (Stainless Steel)	UA12/UA6/1834/1816	1221-579-K
	UA5	1221-597-K
Door, Gasket (Stainless Steel)	UA12/UA6/1834/1816	0861-185-K
	UA5	0861-250-K
Door Hinge		0519-074-K
Door Latch		1006-122-01-K
Door Handle		0911-111
Handle, Side Pull		0911-087
Casters, 5"		0569-306-K
Casters, 5" w/brake		0569-306-BK
Wire Angles (Stainless Steel)		0621-281-SS-K
Pan Rack Insert Each (for -1834 Model)		1103-109
Clear Drip Pan		1017-058

Insulated Hot Cabinets	FL-2355-BC
Rev. 2 (3/21)	Page 7 of 9



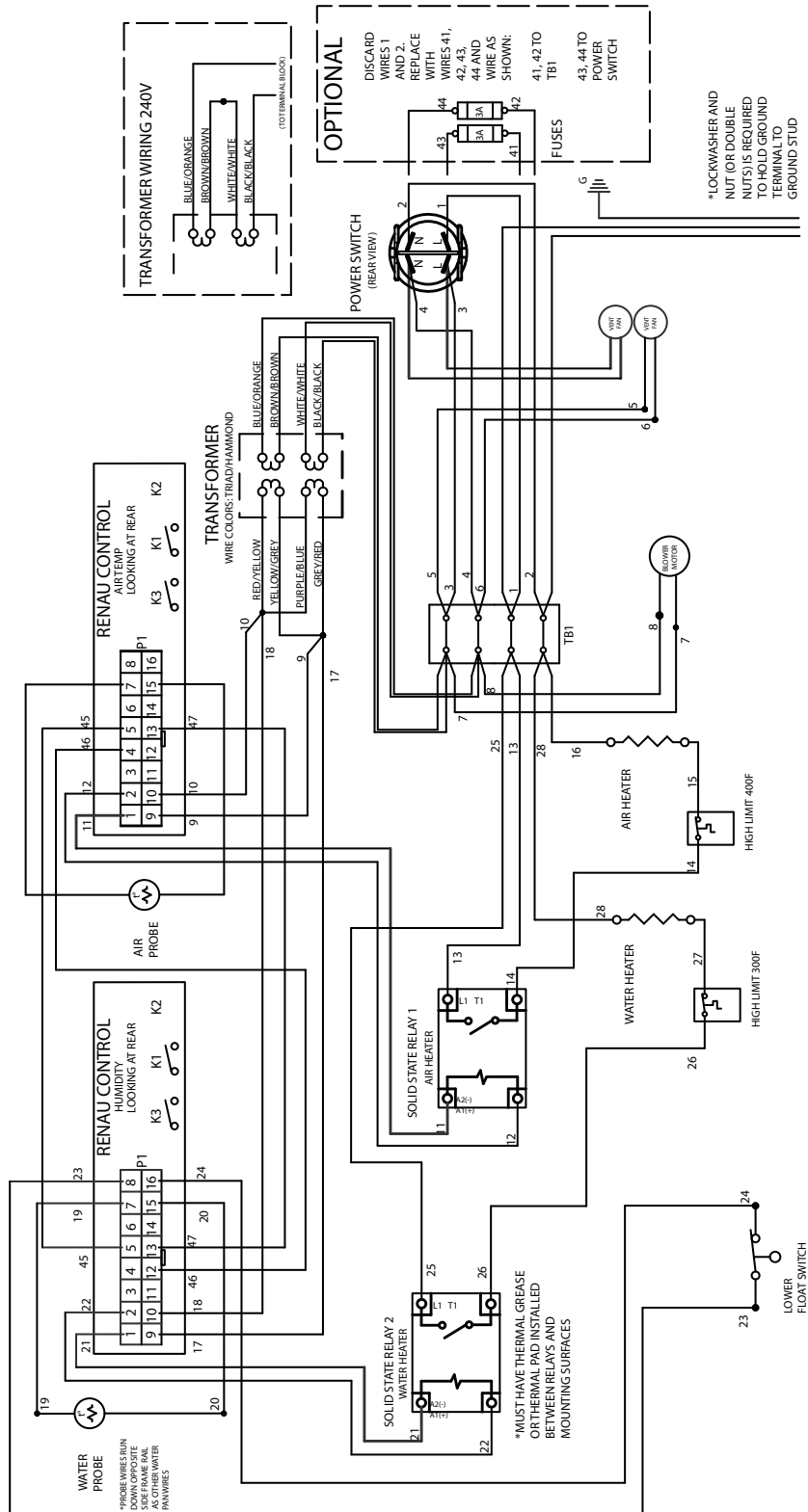
5925 Heisley Road • Mentor, OH 44060-1833

OPERATING and MAINTENANCE INSTRUCTIONS

Model: H137 series Humidity Holding Hot Cabinet

BUC-EE'S PROGRAMMING REVISION J-08

WIRING DIAGRAM:



BUC-EE'S MAINTENANCE SCHEDULE

Models CO151XWUA5DXMBC and CO151FWUA12DXBC

DAILY

Drain water pan and clean interior of unit as per instructions in FL-2373-BC.

Turn off unit and allow to cool for 30 minutes with door open. **DO NOT ICE SHOCK!**

Add cool tap water to temper tank prior to draining. ***Must be drained prior to moving the unit or spillage will occur.***

WEEKLY

Check hinges and latch and adjust as needed per instructions in FL-2373-BC.

MONTHLY

Check that meat probe does not have any fraying wires or exposed conductors.

Replace as needed.

Check that cooling fans are operating when unit is running at cooking temps.

They are controlled by a thermal switch and may not kick on until unit has been operating for some time.

Model H137WSUA5DMBC

DAILY

Drain water pan and clean interior of unit as per instructions in FL-2355-BC.

Turn off unit and allow to cool for 30 minutes with door open. **DO NOT ICE SHOCK!**

Add cool tap water to temper tank prior to draining. ***Must be drained prior to moving the unit or spillage will occur.***

WEEKLY

Check hinges and latch and adjust as needed per instructions in FL-2355-BC.

MONTHLY

Check that cooling fans are operating when unit power switch is on.