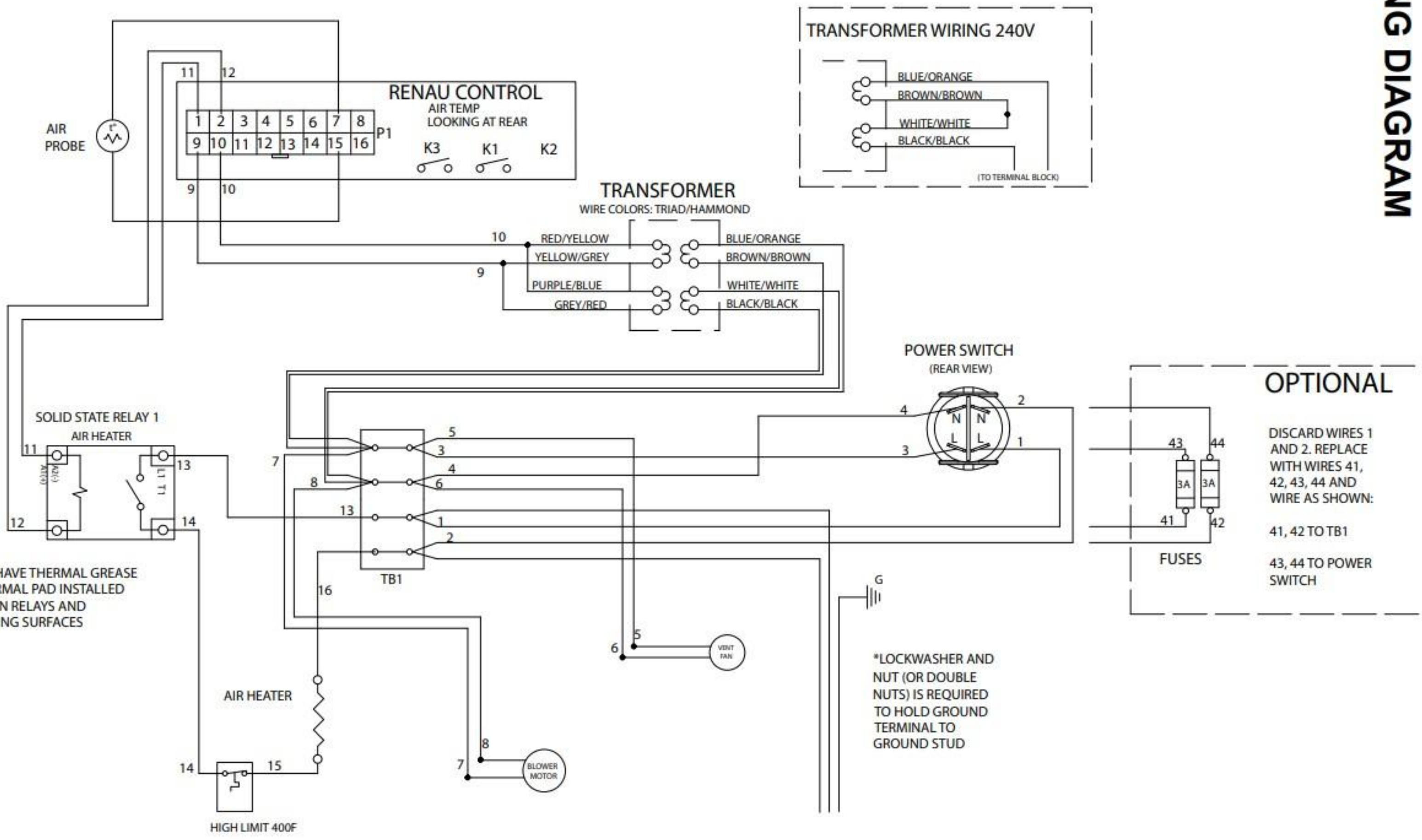


# WIRING DIAGRAM



\*MUST HAVE THERMAL GREASE OR THERMAL PAD INSTALLED BETWEEN RELAYS AND MOUNTING SURFACES

\*LOCKWASHER AND NUT (OR DOUBLE NUTS) IS REQUIRED TO HOLD GROUND TERMINAL TO GROUND STUD

**OPTIONAL**

DISCARD WIRES 1 AND 2. REPLACE WITH WIRES 41, 42, 43, 44 AND WIRE AS SHOWN:

41, 42 TO TB1

43, 44 TO POWER SWITCH