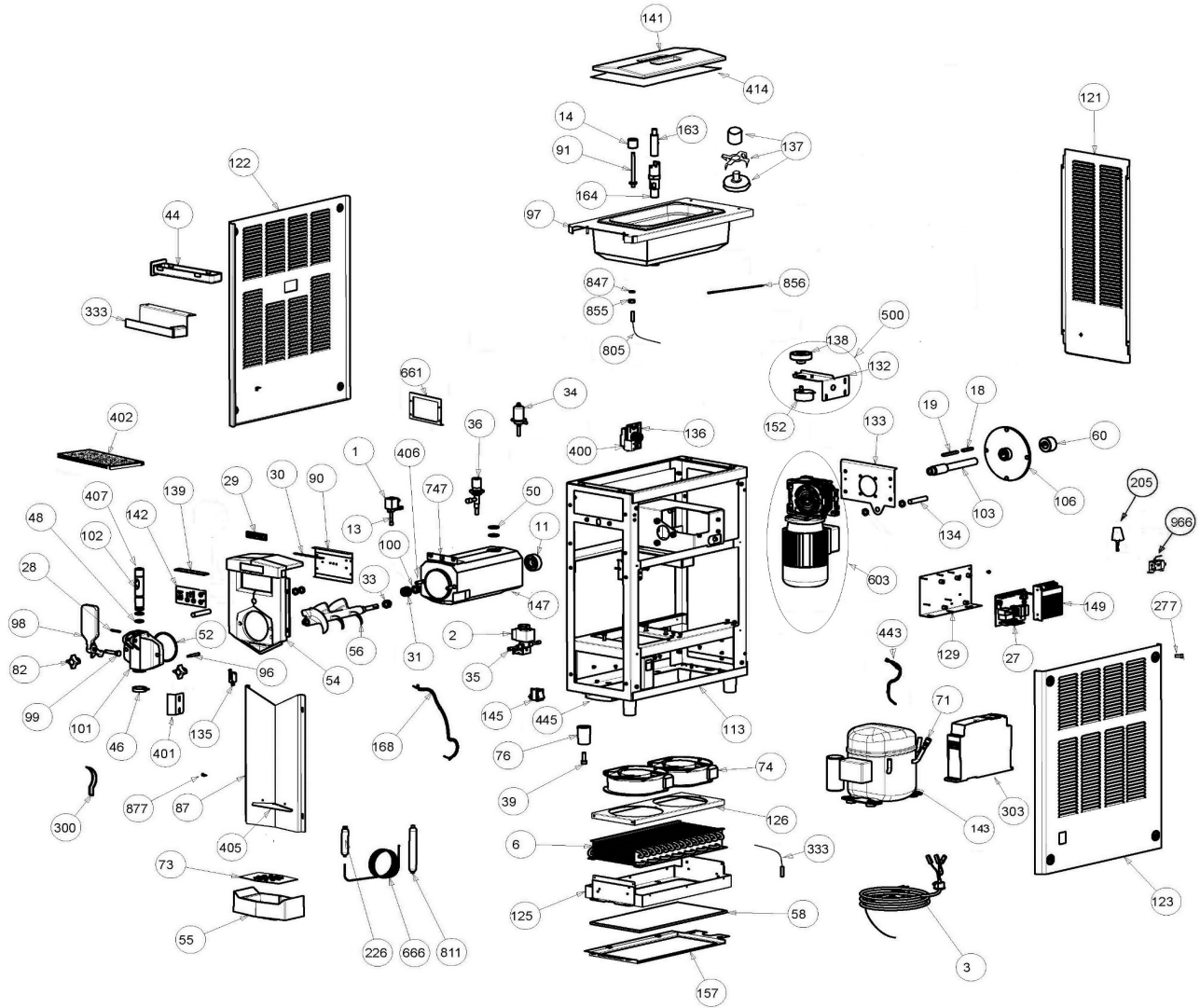


01.CKE01G/115 - 1208-000



Position #	Part #	DESCRIPTION
0	03.BC0005.001	PLASTIC BAG
0	03.KE0001.001	KSOFT PALLET
0	03.KE0002.001	KSOFT PACKAGING
0	03.KE0003.001	EDGE PROTECTION
0	03.KE0004.001	FRONTAL PROTECTION
0	03.KE0005.001	UPPER PROTECTION
0	04.GC0227.001	CRATHCO STICKER
0	04.IP0373.001	"DANGER-ELECTRICAL SHOCK" STICKER
0	04.ZZ0597.001	LUBRICANT TUBE
0	02.IP0125.001	ETL FOOT
1	04.ZZ0177.001	115/60 COIL
2	04.HU0014/110	115/60 CASTEL COIL
3	04.ZZ0596.001	15AMP ETL CABLE
6	04.KE0001.001	KSOFT CONDENSER
11	04.KE0003.001	SWINGING BEARING
13	04.GT1005/110	115/60 SOLENOID VALVE

14	04.HU0019.001	FLOAT
18	ZZ.VI0204.001	6X6X40 KEY
19	ZZ.VI0205.001	6X6X60 KEY
27	02.HU0149.001	KARMA/KSOFT ELECTRONIC BOARD
28	ZZ.VA0004.001	INOX PLUG 4X30
29	04.KE0006.001	KSOFT LOGO STICKER
30	02.HU0150.001	KARMA LED KIT
31	04.MP0015.001	MP 81500985 BT PF C STEADY SEAL
33	04.MP0016.001	MP 70100145 BT PR/AR 11 BP2 FF-RID
34	04.HU0002.001	PARKER EPR139 040915-006 EVAPORATOR
35	04.HU0013.001	CASTEL VALVE ART. 1028/2E AT. 1/4 ODS
36	04.HU0001.001	PARKER VALVE
39	ZZ.VI0002.001	8x45 SCREW
44	02.HU0100.001	DRIP DRAWER
46	02.HU0057.001	STAR-SHAPED SPOUT
48	04.BA0026.TPS	15,47X3,53 SILICONE O-RING
50	04.HU0081.001	22X3 O-RING
52	04.KE0005.001	72,62X3,53 O-RING
54	02.KE0024.001	KSOFT BLACK PLASTIC FRONT PANEL
55	02.KE0027.001	KSOFT DRIP TRAY
56	02.KE0053.002	KSOFT AUGER
58	04.KE0002.001	CONDENSER FILTER
60	02.KE0057.001	WHEEL BLOCKING BUSHING
71	04.ZZ0003.001	COMPRESSOR CHARGING VALVE
73	02.KE0028.001	KSOFT DRIP TRAY GRILL
74	04.GT0001/115	FAN MOTOR
76	02.AA0024.001	FOOT
82	02.HU0154.002	FLANGE FIXING KNOB
87	02.KE0026.001	KSOFT LOWER STAINLESS STEEL PANEL
90	02.HU0136.002	KARMA CONTROL PANEL
91	02.KE0008.001	LEVEL ROD
96	02.KE0055.001	SAFETY MICRO SWITCH PIN
97	05.KE0008.002	COMPLETE UPPER TANK KSOFT GRAVITY
98	02.HU0110.001	KARMA TAP LEVER
99	02.HU0056.001	KARMA TAP LEVER PIN
101	02.KE0004.001	KSOFT FRONT FLANGE
102	02.KE0005.001	KSOFT PISTON
103	02.KE0018.001	KSOFT SHAFT
106	02.KE0019.001	KSOFT SENSOR WHEEL
113	02.KE0001.002	KSOFT FRAME
121	02.KE0021.002	KSOFT WHITE REAR PANEL
122	02.KE0022.002	KSOFT LEFT WHITE PANEL
123	02.KE0023.002	KSOFT RIGHT WHITE PANEL
125	02.KE0006.001	KSOFT LOWER CONVEYOR
126	02.KE0007.001	KSOFT UPPER CONVEYOR
129	02.KE0030.001	KSOFT BOARD SUPPORT
132	02.KE0060.001	KSOFT TYZ-49 MOTOR SUPPORT
133	02.KE0017.001	KOSFT GEARMOTOR SUPPORT
134	04.HU0008.002	IME WIRED INDUCTIVE SENSOR 4MMM12
135	04.KE0007.001	ETL SAFETY MICRO SWITCH
136	04.BA0031.001	K50 THERMOSTAT
137	05.KE0013.002	KSOFT UPPER TANK ETL MIXER
138	02.MD0008.003	KSOFT MAGNETIC WHEEL
139	02.HU0151.001	LED PROTECTION
141	02.KE0072.001	KSOFT PLASTIC LID
142	04.HU0064.002	KARMA CONTROL PANEL STICKER
143	04.BB0205.001	MPT12LD 115/60 COMPRESSOR
145	04.BB0061.001	BLACK MAIN SWITCH
147	05.KE0001.002	KSOFT COMPLETE CYLINDER
149	04.HB0388.001	LRS-50-24 POWER SUPPLIER
152	08.CC0002/110	CROUZET MOTOR 115/60
157	02.KE0036.001	KOSFT CONDENSER FILTER SUPPORT
163	02.KE0074.001	AIR REGULATION PIPE
164	02.KE0073.001	PRODUCT REGULATION PIPE
168	08.KE0001/115	KSOFT 115/60 MAIN HARNESS
205	04.EC0016.001	FUSE PLUG

226	04.NI0004.001	FILTER
277	ZZ.VI0159.001	5X14 PANEL SCREW
300	02.KE0061.001	KARMA/KSOFT HANDLE SPRING TH.2
303	04.ZZ0602/115	VIOLET INVERTER ETL
333	02.KE0020.001	DRIP DRAWER SUPPORT
333	04.EC0025.001	NTC 10K PROBE
400	02.KE0037.001	KSOFT THERMOSTAT SUPPORT
401	02.KE0029.001	KSOFT MICRO-SWITCH SUPPORT
402	02.KE0059.001	KSOFT FRONT/ UPPER PLATE SEAL
405	02.KE0034.001	KSOFT FRONT PANEL DRIP COLLECTOR
406	02.KE0012.001	FRONT FLANGE FIXING BOLT
406	02.KE0003.001	KSOFT CENTERING BUSHING
407	02.KE0011.001	KSOFT PISTON EXTENTION
414	02.KE0070.001	KSOFT LID ENCLOSURE
445	02.HU0021.001	DRIP TRAY SUPPORT
603	04.HU0065.001	KSOFT GEARMOTOR
661	02.HU0160.001	CONTROL PANEL FRAME
666	04.ZZ0168.001	CAPILLARY PIPE
747	02.KE0062.001	KSOFT EVAPORATOR SUPPORT
805	04.HU0020.002	KARMA D.4MM CYLINDRIC WIRED REED
811	04.ZZ0307.001	FILTER
847	04.HU0011.001	7,66X1,78 NBR70 O-RING
855	ZZ.DA0030.001	NUT
856	02.HU0066.001	KARMA PT1000 2WIRES W=1000MM PROBE
877	ZZ.VI0005.001	3,5X6,5 SCREW
966	04.BC0050.001	CUT-OUT PRESSURE SWITCH