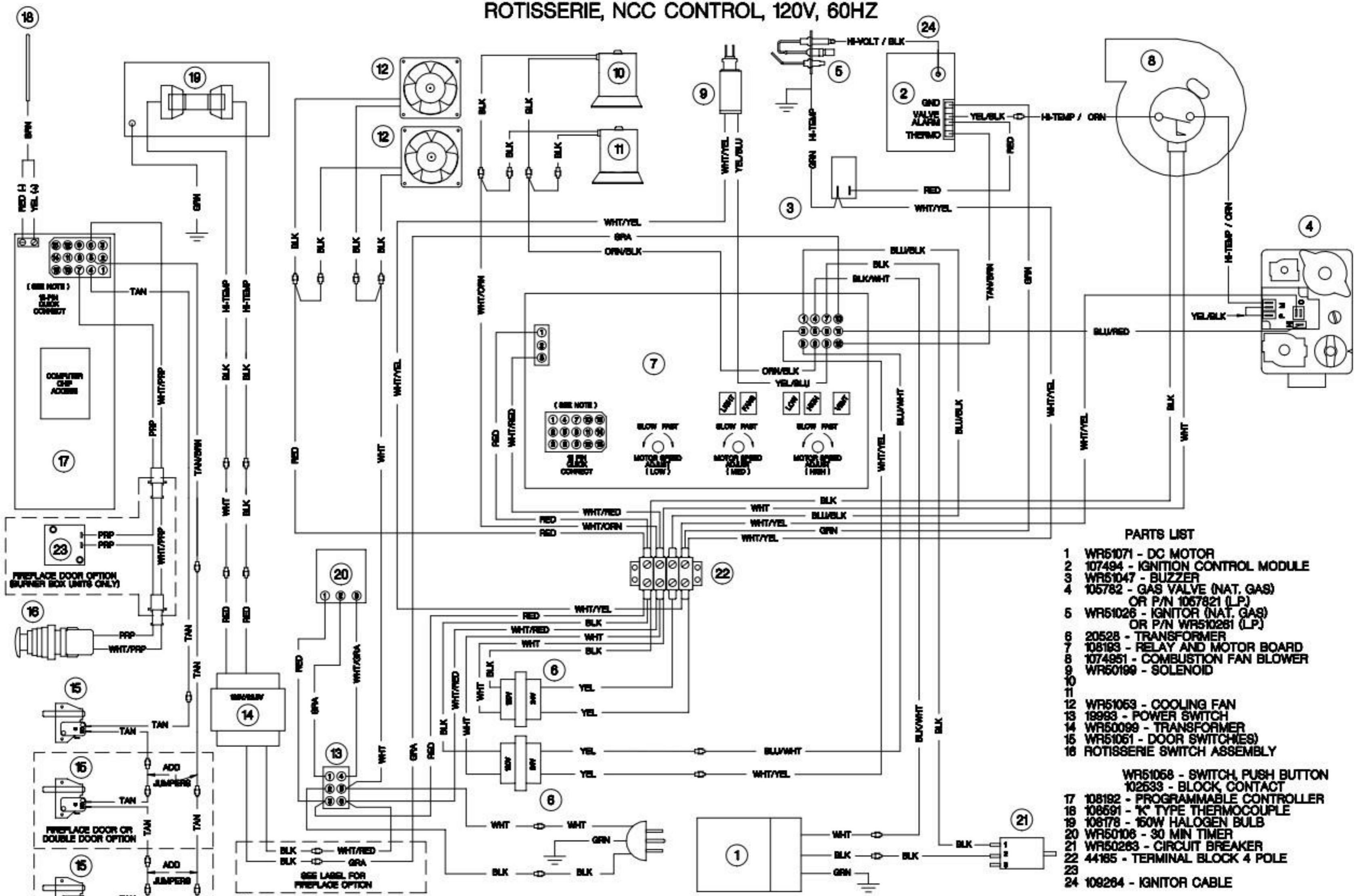


ROTISSERIE, NCC CONTROL, 120V, 60HZ



PARTS LIST

- 1 WR51071 - DC MOTOR
- 2 107494 - IGNITION CONTROL MODULE
- 3 WR51047 - BUZZER
- 4 105782 - GAS VALVE (NAT. GAS)
OR P/N 1057821 (LP)
- 5 WR51026 - IGNITOR (NAT. GAS)
OR P/N WR510261 (LP)
- 6 20528 - TRANSFORMER
- 7 108193 - RELAY AND MOTOR BOARD
- 8 1074951 - COMBUSTION FAN BLOWER
- 9 WR50199 - SOLENOID
- 10
- 11
- 12 WR51063 - COOLING FAN
- 13 19983 - POWER SWITCH
- 14 WR50099 - TRANSFORMER
- 15 WR51061 - DOOR SWITCH(ES)
- 16 ROTISSERIE SWITCH ASSEMBLY
- WR51068 - SWITCH, PUSH BUTTON
- 102533 - BLOCK CONTACT
- 17 108192 - PROGRAMMABLE CONTROLLER
- 18 108591 - 'K' TYPE THERMOCOUPLE
- 19 108178 - 150W HALOGEN BULB
- 20 WR50108 - 30 MIN TIMER
- 21 WR50263 - CIRCUIT BREAKER
- 22 44185 - TERMINAL BLOCK 4 POLE
- 23
- 24 109264 - IGNITOR CABLE

NOTE:
 FOR CLARITY, THE WIRES THAT CONNECT THE 15-PIN QUICK CONNECT ON THE PROGRAMMABLE CONTROLLER AND THE 15-PIN QUICK CONNECT ON THE RELAY AND MOTOR BOARD ARE NOT SHOWN EXCEPT FOR PINS 4, 5, 6, AND 7 FROM THE 15-PIN QUICK CONNECT ON THE CONTROLLER, WHICH GO TO THE JOG AND DOOR SWITCHES, EACH WIRE CONNECTS A PAIR OF NUMBERS ON THE 15-PIN QUICK CONNECTS (I.E. PIN 1 ON THE CONTROLLER TO PIN 1 ON THE RELAY AND MOTOR BOARD). MORE INFORMATION ON THESE WIRES IS AVAILABLE ON THE LADDER DIAGRAM (P/N 108693).