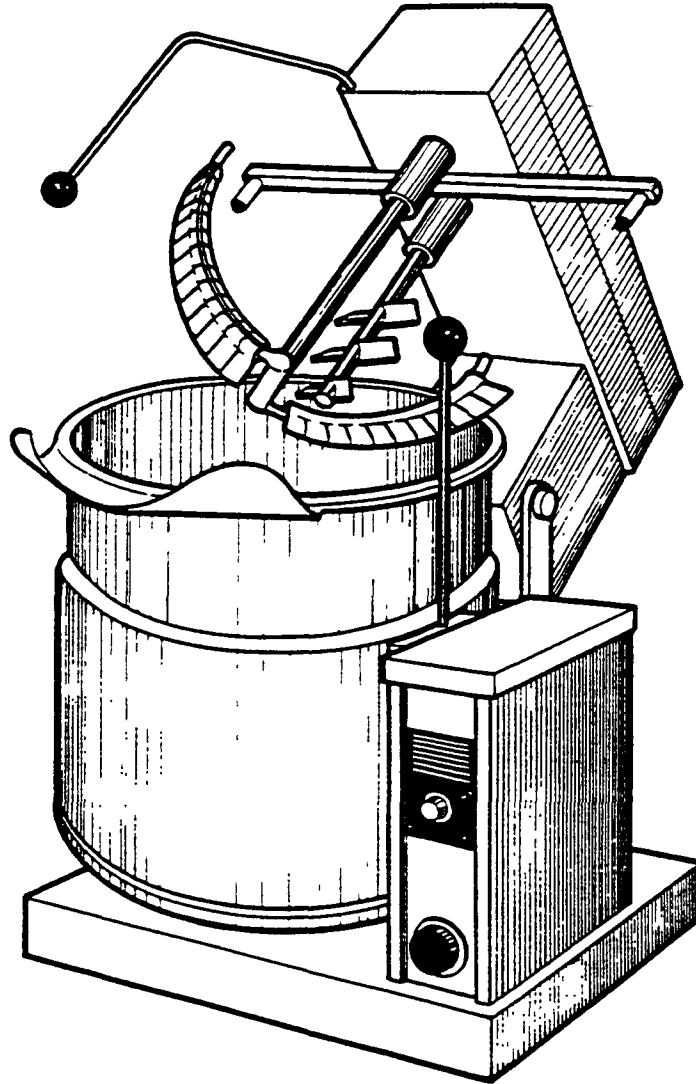


Repair Manual

Table Top Electric Mixer Kettles

Models: MKET-20-T
MKET-10-T



03/03/88

Cleveland Range, Inc.

UNITED STATES

1333 East 179th St., Cleveland, Ohio 44110
Phone: (216) 481-4900 Telex: 98-0546 Fax: (216) 481-3782
Toll Free: 1-800-338-2204 (in U.S.A. only)

CANADA

8251 Keele St. Concord, Ontario, Canada L4K 1Z1
Phone: (416) 660-4747 Fax: (416) 660-4492
Toll Free: 1-800-387-3562 (in Canada only)

Cleveland WARRANTY AND LIMITED EXTENDED WARRANTY COVERAGE

LIMITED WARRANTY

Cleveland Range products are warranted to the original purchaser to be free from defects in material and workmanship under normal use and service for the standard warranty period.

Cleveland Range agrees to repair or replace, at its option, f.o.b factory, any part which proves to be defective due to defects in material or workmanship during the warranty period, providing the equipment has been unaltered, and has been PROPERLY INSTALLED, MAINTAINED, AND OPERATED IN ACCORDANCE WITH THE CLEVELAND RANGE OWNER'S MANUAL.

CLEVELAND RANGE agrees to pay any FACTORY AUTHORIZED EQUIPMENT SERVICE AGENCY (within the continental United States, Hawaii, and Canada) for reasonable labor required to repair or replace, at our option, f.o.b. factory, any part which proves to be defective due to defects in material or workmanship, during the labor warranty period. This warranty includes travel time not to exceed two hours and mileage not to exceed 50 miles (100 miles round-trip), but does not include post start-up, tightening loose fittings, minor adjustments, maintenance, cleaning or descaling.

The standard labor warranty allows factory payment of reasonable labor required to repair or replace such defective parts. Cleveland Range will not reimburse the expense of labor required for the repair or replacement of parts after the standard warranty period, unless an Extended Labor Warranty Contract has been purchased to cover the equipment for the balance of the warranty period from the date of equipment installation, start-up, or demonstration.

PROPER INSTALLATION IS THE RESPONSIBILITY OF THE DEALER, THE OWNER-USER, OR INSTALLING CONTRACTOR. AND IS NOT COVERED BY THIS WARRANTY. Many local codes exist, and it is the responsibility of the owner and installer to comply with these codes. Cleveland Range equipment is built to comply with applicable standards for manufacturers, including UL, A.G.A., NSF, ASME/Ntl. Bd., CSA, CGA, ETL, and others.

BOILER (Steam Generator) MAINTENANCE IS THE RESPONSIBILITY OF THE OWNER-USER, AND IS NOT COVERED BY THIS WARRANTY. The use of good quality feed water is the responsibility of the Owner-User (*see Water Quality Requirements below*). THE USE OF POOR QUALITY FEED WATER WILL VOID EQUIPMENT WARRANTIES. Boiler maintenance supplies, including boiler hand gaskets, are not warranted beyond the first 90 days after the date the equipment is placed into service if no preventive maintenance records are available showing descaling every 90-120 days.

WATER QUALITY REQUIREMENTS

TOTAL DISSOLVED SOLIDS	less than	60 parts per million
TOTAL ALKALINITY	less than	20 parts per million
SILICA	less than	13 parts per million
CHLORIDE	less than	30 parts per million
pH FACTOR	greater than	7.5

The foregoing shall constitute the sole and exclusive remedy of original purchaser and the full liability of Cleveland Range for any breach of warranty. THE FOREGOING IS EXCLUSIVE AND IN LIEU OF ALL OTHER WARRANTIES, WHETHER WRITTEN, ORAL, OR IMPLIED, INCLUDING ANY WARRANTY OF PERFORMANCE, MERCHANTABILITY, OR FITNESS FOR PURPOSE, AND SUPERSEDES AND EXCLUDES ANY ORAL WARRANTIES OR REPRESENTATIONS, OR WRITTEN WARRANTIES OR REPRESENTATIONS, NOT EXPRESSLY DESIGNATED IN WRITING AS A "WARRANTY" OR "GUARANTEE" OF CLEVELAND RANGE MADE OR IMPLIED IN ANY MANUAL, LITERATURE, ADVERTISING BROCHURE OR OTHER MATERIALS.

Cleveland Range's liability on any claim of any kind, including negligence, with respect to the goods or services covered hereunder, shall in no case exceed the price of the goods or services, or part thereof, which gives rise to the claim. IN NO EVENT SHALL CLEVELAND RANGE BE LIABLE FOR SPECIAL, INCIDENTAL, OR CONSEQUENTIAL DAMAGES, OR ANY DAMAGES IN THE NATURE OF PENALTIES.

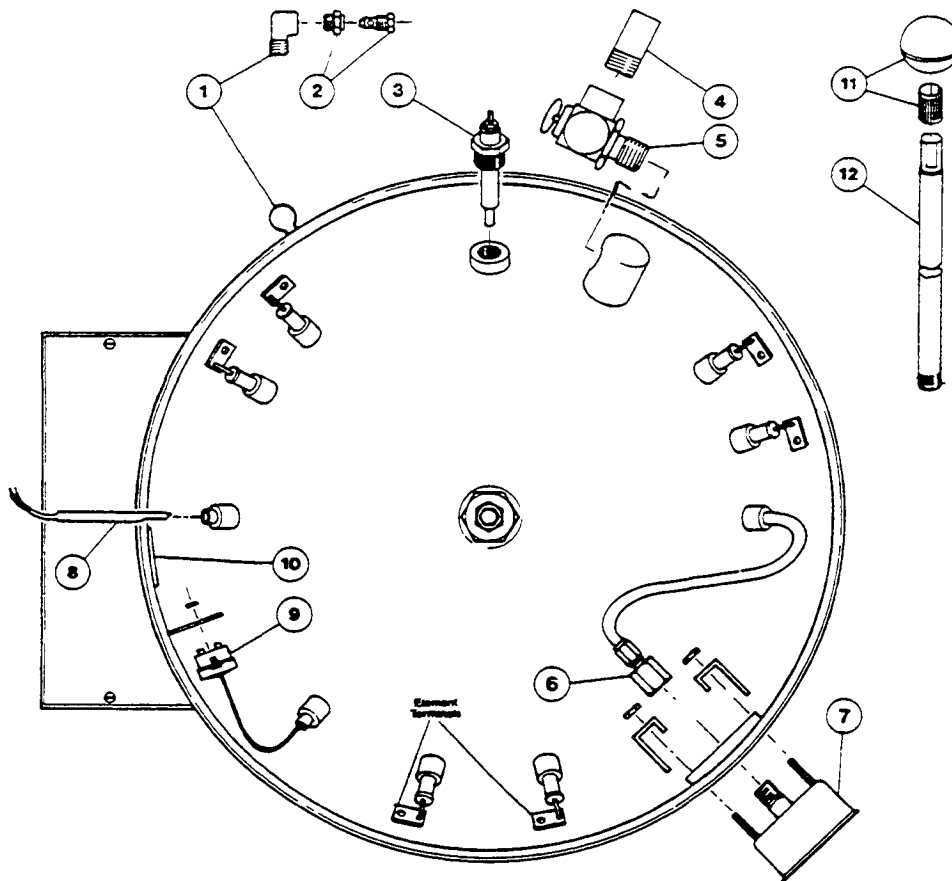
LIMITED EXTENDED WARRANTY COVERAGE

The purchase of a Limited Extended Warranty Contract extends the standard warranty coverage to the purchased period of time (one to four years) from the date of installation, start-up, or demonstration, whichever is sooner.

OPERATING CONTROLS AND INDICATORS

Item No.	Description	Function
15	On-Off Toggle Switch (Control Housing Dwg)	Controls electrical power to the kettle.
21	Solid State Temperature Control Knob (Control Housing Dwg.)	This control allows the operator to select kettle heat increments from Mm to Max (see temperature setting chart in the operating instructions manual).
17	Heat Indicator Light (Green) (Control Housing Dwg.)	When lit, indicates that the kettle heating elements are on Cycles On-Off with temperature control.
22	Low Water Indicator Light (Red) (Control Housing Dwg.)	When lit, indicates that the heating elements have shut off and the unit requires more water (See Reservoir Fill Procedure).
24	Agitator Speed Control Knob (Control Housing Dwg.)	This control allows the operator to select agitator speed increments from Mm to Max.
7	Vacuum/Pressure Gauge (Kettle Bottom Dwg.)	Indicates steam pressure in PSI inside the steam jacket as well as a vacuum.
5	Pressure Relief Valve (Kettle Bottom Dwg.)	In the unlikely event that there is an excess steam build-up in the jacket, this valve opens automatically to relieve this pressure.
1	Chrome Plated Brass Vent (Kettle Bottom Dwg.)	This is used to vent the kettle if there is insufficient vacuum as well as for refilling the kettle with water (See Venting Instructions and Reservoir Fill Procedures).
12	Tilting Handle (Kettle Bottom Dwg.)	Used for tilting the kettle.

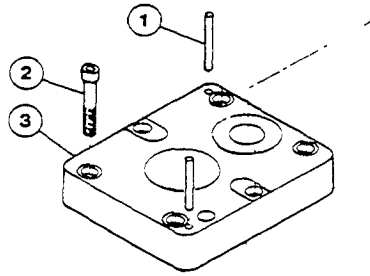
KETTLE BOTTOM



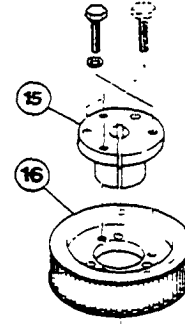
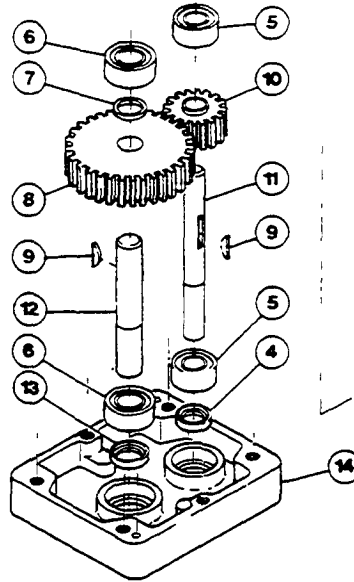
Item No.	Part No.	Description	Qty.
1	F105025	Bleed Vent Elbow--	1
2	KE50570	Bleed Vent Nut	1
3	KE50556	Probe - Low Water	1
4	KE50997	Blow Down Tube	1
5	KE51723	Safety Valve, 50 PSI, 1/2"	1
	N/A	Safety Valve, 55 PSI, 1/2" (please order pan #KE51723)	1
6	F105022	Connector	1
7	KE50429	Pressure Gauge	1
8	KE00515	Thermistor	1
9	KE50558	Safety Thermostat (140°C)	1
10	KE50555	Grommet	1
11	KE50151	Knob, Handle	1
12	KE50803	Handle (MKET-10-T)	1
	KE50561	Handle (MKET-20-T)	1

Use only replacement pans which are factory supplied as to preserve the certification of Underwriters Laboratories, American Gas Association, Canadian Standards Association or Canadian Gas Association (as applicable). The use of other than factory supplied replacement pans will void the warranty.

GEARBOX



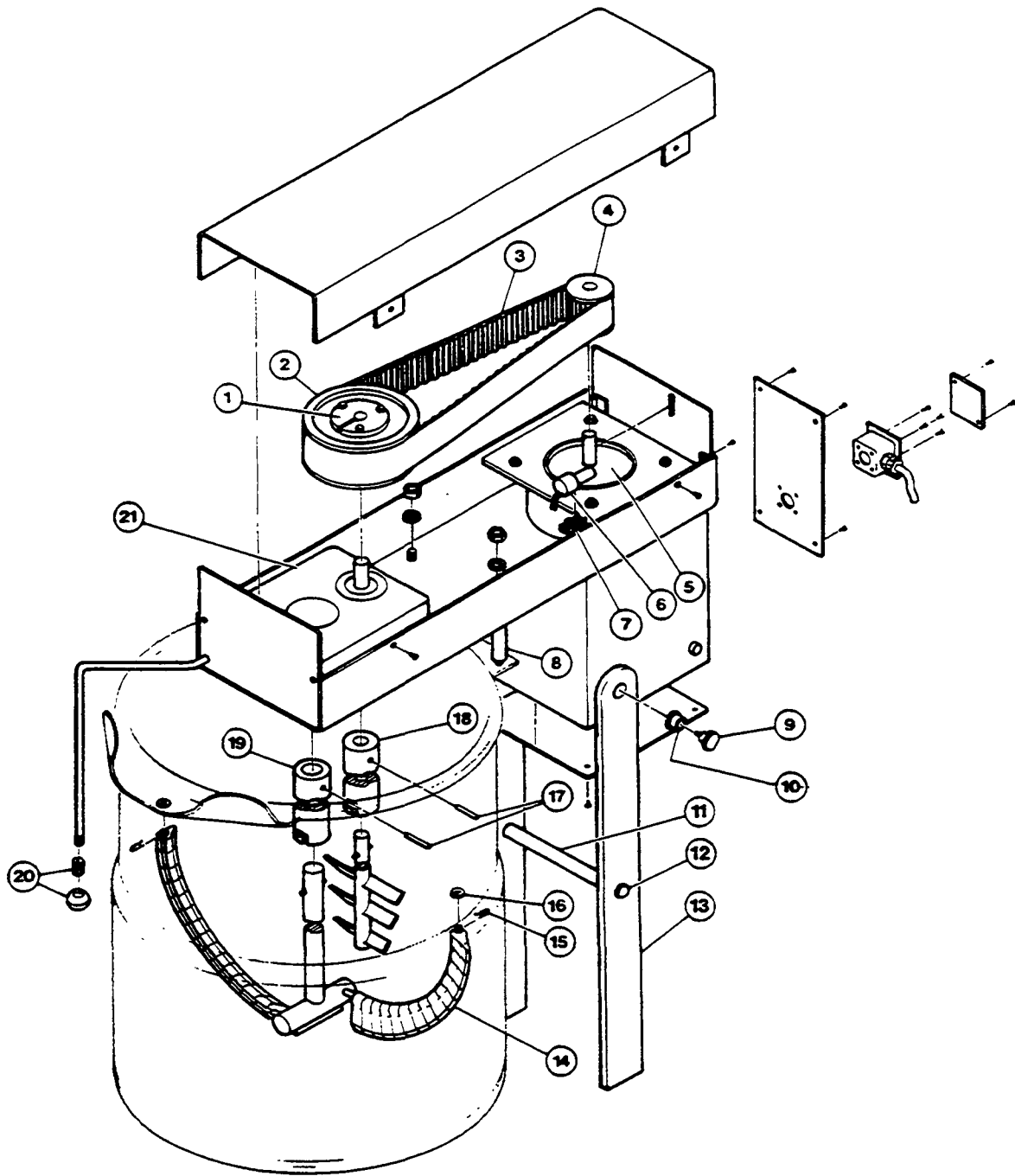
NOTE: Insert bolts in opposite holes for taper lock bushing removal



Item No.	Part No.	Description	Qty.
1	FA95039	Dowel Pin, 1/4" x 2" (MKET-10-T)	2
	FA95004	Dowel Pin, 3/8" x 3" (MKET-20-T)	2
2	FA11510	Screw, Socket Head Cap, 5/16-18 UNC x 1 -3/4" 4	4
	FA10776	Screw, Socket Head Cap, 3/8-16 UNC x 2-1/2"	4
3	KE51966	Upper Body Casing (MKET-10-T)	1
	KE50265	Upper Body Casing (MKET-20-T)	1
4	KE50268	Bushing, Small Gear	1
5	KE50266	Bearing, Small Gear	2
6	KE50259	Bearing, Large Gear	2
7	KE51245	Spacer (MKET-10-T)	1
8	KE50299	Gear, Large Spur (MKET-10-T)	1
	KE00105	Gear, Large Spur (MKET-20-T)	1
9	FA95003	Key, Woodruff	2
10	KE00106	Gear, Small Spur	1
11	KE50264	Shaft, Driving	1
	KE50261	Shaft, Driven (MKET-10-T)	1
12	KE50260	Shaft, Driven (MKET-20-T)	1
	KE50269	Bushing, Large Gear	1
13	KE50269	Bushing, Large Gear	1
14	KE51967	Lower Body Casing (MKET-10-T)	1
	KE50267	Lower Body Casing (MKET-20-T)	1
15	KE50342	Bushing, Taper Lock	1
16	KE50284	Pulley, Large	1

Use only replacement parts which are factory supplied as to preserve the certification of Underwriters Laboratories, American Gas Association, Canadian Standards Association or Canadian Gas Association (as applicable). The use of other than factory supplied replacement parts will void the warranty.

BRIDGE (PRIOR TO AUG. 1, 1985)

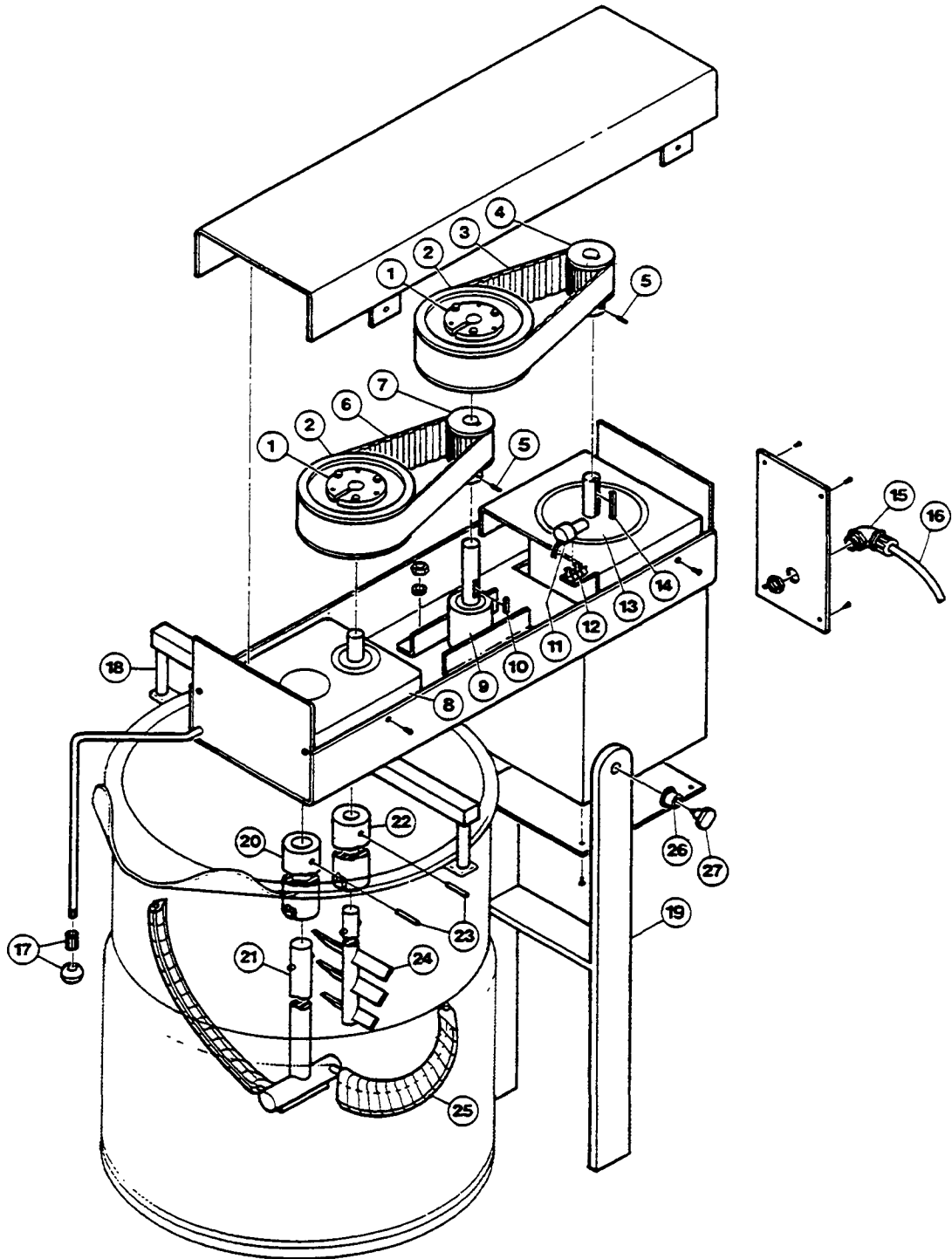


**PARTS LIST - BRIDGE
(PRIOR TO AUG. 1,1985)**

Item No.	Part No.	Description	Qty.
1	KE50342	Bushing, Taper Lock	1
2	KE50284	Pulley, Large	1
3	KE50287	Belt (MKET-10-T)	1
	KE50286	Belt (MKET-20-T)	1
4	KE50285	Pulley, Small	1
5	KE50296	Motor, 1/2 H.P (MKET-10-T)	1
	KE50297	Motor, 3/4 H.P (MKET-20-T)	1
6	KE50294	Switch, Mercury	1
7	KE50295	Bracket, Mercury Switch	1
8	KE51232	Pin, Bridge Support (MKET-10-T)	2
	KE51166	Pin, Bridge Support (MKET-20-T)	2
9	KE52025	Pin, Bridge Pivot	2
10	KE51965	Bushing, Bridge Pivot	2
11	KE51235	Centre Support	1
12	FA21054	Nut, Centre Support	2
13	KE51236	Leg, Bridge Support (MKET-10-T)	2
	KE51237	Leg, Bridge Support (MKET-20-T)	2
14	KE51833	Scraper Blade	28,40
15	FA95020	Pin, Cotter	2
16	FA30503	Washer	2
17	FA95038	Pin, Agitator Coupling Taper	2
18	KE51810	Coupling, Secondary Agitator	1
19	KE51809	Coupling, Primary Agitator	1
20	KE50151	Knob, Handle	1
21		See Gear Box Detail	1

Use only replacement parts which are factory supplied as to preserve the certification of Underwriters Laboratories, American Gas Association, Canadian Standards Association or Canadian Gas Association (as applicable). The use of other than factory supplied replacement parts will void the warranty.

BRIDGE (AFTER AUG. 1, 1985)



**PARTS LIST - BRIDGE
(AFTER AUG. 1,1985)**

Item No.	Part No.	Description	Qty.
1	KE50342	Bushing, Taper Lock	2
2	KE50284	Pulley, Large	2
3	KE51763	Belt (MKET-10-T)	1
	KE51808	Belt (MKET-20-T)	1
4	KE50285	Pulley, Small	1
5	FA19094	Set Screw, 10-24x3/8"	2
6	KE51763	Ben(MKET-10-T)	1
	KE51807	Belt (MKET-20-T)	1
7	KE51764	Pulley, Small -	1
8		See Gear Box Detail	1
9	KE00773	Speed Reducer	1
10	FA95037	Key, 3/16"x 3/16"x 3/4"	1
11	KE50294	Switch, Mercury	1
12	KE50295	Bracket, Mercury Switch	1
13	KE51962	Motor, DC. 3/4 H.P., 120V	1
	KE51963	Motor, D.C., 3/4 H.P., 240 V	1
14	FA95014	Key,3/16'x3/16'x1"	1
15	KE51900	Connector, Conduit	1
16	KE51916	Conduit (MKET-10-T)	1
	KE51917	Conduit (MKET-20-T)	1
17	KE50151	Knob, Handle	1
18	KE51801	Pin, Bridge Support (MKET-10-T)	1
	KE51802	Pin, Bridge Support (MKET-20-T)	1
19	KE00847	Bridge Support Post (MKET-10-T)	1
	KE00848	Bridge Support Post (MKET-20-T)	1
20	KE51809	Coupling, Primary Shaft	1
21	KE00831	Agitator, Primary (MKET-10-T)	1
	KE00832	Agitator, Primary (MKET-20-T)	1
22	KE51810	Coupling, Secondary Shaft-	1
23	FA95038	Pin, Agitator Coupling Taper	2
24	KE00829	Agitator, Secondary (MKET-10-T)	1
	KE00830	Agitator, Secondary (MKET-20-T)	1
25	KE51833	Scraper Blade	24,34
26	KE51965	Bushing, Bridge Pivot	2
27	KE52025	Pin, Bridge Pivot	2

Use only replacement parts which are factory supplied as to preserve the certification of Underwriters Laboratories, American Gas Association, Canadian Standards Association or Canadian Gas Association (as applicable). The use of other than factory supplied replacement parts will void the warranty.

ALL ELECTRIC KETTLES SERVICING GUIDE

This section contains servicing information intended for use by Authorized Service Personnel.

Note 1 If Fault Isolation Procedure is required, be sure to start at step #1,

Note 2 On table top kettles the entire control mounting panel may be removed from kettle control housing for easier troubleshooting and parts replacement

A/ **Problem:** Kettle is not heating at all. (Kettle must be on and temperature control set.)

Possible Causes

- | | |
|---------------------------------|---------------------------------------|
| 1. No incoming power. | 8. Defective potentiometer. |
| 2. Kettle is tilted. | 9. Defective low water level probe. |
| 3. Low water condition. | 10. Defective thermistor. |
| 4. Defective on/off switch. | 11. Defective 240/16 VAC transformer. |
| 5. Defective 12 VDC relay. | 12. Defective control box. |
| 6. Defective safety thermostat. | 13. Defective elements. |
| 7. Defective contactor/s. | |

Fault Isolation Procedure

Step	Test	Result	Remedy
1	Is there proper incoming voltage at terminal block [?]	Yes	Go to step #2.
		No	Correct external power supply problem.
2	Is the red LED illuminated [?]	Yes	Follow Kettle Filling Procedure. If this does not correct the problem go to PROBLEM D.
		No	Go to step #3.
3	Is the green LED illuminated [?]	Yes	Go to step #4.
		No	Go to step #7.
4	Do both contactors energize [?]	Yes	Check contactor contacts for pitting. Voltage across contactor terminals while in a closed position indicates a poor contact. Replace contactor/s as necessary. Check elements for short to ground or an open circuit. If element/s are defective contact the factory. Elements are not field replacable.
		No	Go to step #5.
5	Measure continuity across safety thermostat. Is it an open circuit [?]	Yes	Replace defective safety thermostat.
		No	Go to step #6.
6	Is there 120 VAC present across the coils of the contactors [?]	Yes	Replace defective contactor/s.
		No	Replace defective 12 VDC relay.

7	Remove wire from low water level probe and ground it to the body of the kettle. Do the contactors now energize ⁷	Yes	Clean or replace defective low water level probe. Replace defective red LED.
		No	Go to step #8.
8	Is there 16 VAC present at output of 16 VAC transformer ⁷	Yes	Go to step #9.
		No	Replace defective 240/16 VAC transformer.
9	Measure continuity of ON/OFF switch. Is it operating properly ⁷	Yes	Go to step #10.
		No	Replace defective ON/OFF switch.
10	Unplug control box and measure the resistance across potentiometer. Is it approx 0 ohms at max and 50,000 ohms at mm settings?	Yes	Go to step #11.
		No	Replace defective potentiometer.
11	Remove edge connector from control box. While kettle is cold or thermistor is removed and allowed to cool, measure the resistance between edge connectors pins #2 and #7. Is it approx 100,000 ohms ⁷	Yes	Spray contact cleaner on control-box terminals and edge connector. Try box again, if problem still exists, replace defective control box.
		No	Replace defective thermistor.

B/ Problem: Kettle heats too slowly or not hot enough.

(Note: normal max. operating pressure with an empty kettle is 30-35 psi.)

Possible Causes

- | | |
|---|---------------------------|
| 1. Air in kettle jacket - requires venting. | 5. Defective contactors. |
| 2. Defective safety thermostat. | 6. Defective control box. |
| 3. Defective potentiometer. | 7. Defective element/s. |
| 4. Defective thermistor. | |

Fault Isolation Procedure

Step	Test	Result	Remedy-
1	In a cold state, does the pressure gauge read in the green zone ⁷	Yes	Go to step #2.
		No	There is air present in the jacket of the kettle. Follow Kettle Venting Procedure. If constant venting is required, there is a leak that should be corrected.
2	Do the contactors shut off too early ⁷ (before reaching normal max operating pressure)	Yes	Go to step #3.
		No	Check contactor contacts for pitting. Voltage across terminals of contactor while energized signifies a poor contact. Replace contactor/s as necessary. Check elements for short to ground or open circuit. If elements are defective, contact the factory. Elements are not field replacable.
3	Does the green LED remain illuminated after the contactors shut off ⁷	Yes	Replace defective safety thermostat.
		No	Go to step #4.

4.	Unplug control box and measure the resistance across potentiometer. Is it approx 0 ohms at max and 50,000 ohms at mm settings ⁷	Yes	Go to step #5.
		No	Replace defective potentiometer.
5.	Remove kettle thermistor and allow to cool. Remove edge connector from control box. Test resistance across edge connectors pins #2 and #7. Is it approx 100,000 ohms ⁷	Yes	Go to step #6.
		No	Replace defective thermistor.
6.	Turn the potentiometer on the control box clockwise to increase the max operating temperature. Does the kettle now achieve max operating pressure of 30-35 psi in an empty kettle ⁷	Yes	Kettle is operating properly.
		No	Spray contact cleaner on control box terminals and edge connector. Try box again. If problem still exists, replace defective control box.

C/ **Problem:** Kettle is overheating.

Possible Causes

1. Defective thermistor.
2. Defective potentiometer.
3. Defective 12 VDC relay.
4. Defective control box.

Fault Isolation Procedure

Step	Test	Result	Remedy
1.	Does the green LED turn off even though the contactors remain energized ⁷	Yes	Replace defective 12 VDC relay.
		No	Go to step #2.
2.	Unplug the control box and measure the resistance across the potentiometer. Is the resistance approx 0 ohms at max and 50,000 ohms at mm settings ⁷	Yes	Go to step #3.
		No	Replace defective-potentiometer.
3.	Remove kettle thermistor and allow to cool. Remove edge connector from control box. Test resistance across edge connectors pins #2 and #7. Is it approx 100,000 ohms ⁷	Yes	Go to step #4.
		No	Replace defective thermistor.
4.	Turn the potentiometer on the control box counter-clockwise to decrease the max operating temperature. Does the kettle continue to overheat ⁷	Yes	Spray contact cleaner on control box terminals and edge connector. Try box again. If problem still exists, replace defective control box.
		No	Kettle is operating properly.

WIRING DIAGRAM

D/ Problem: Red LED remains illuminated even though water has been added.

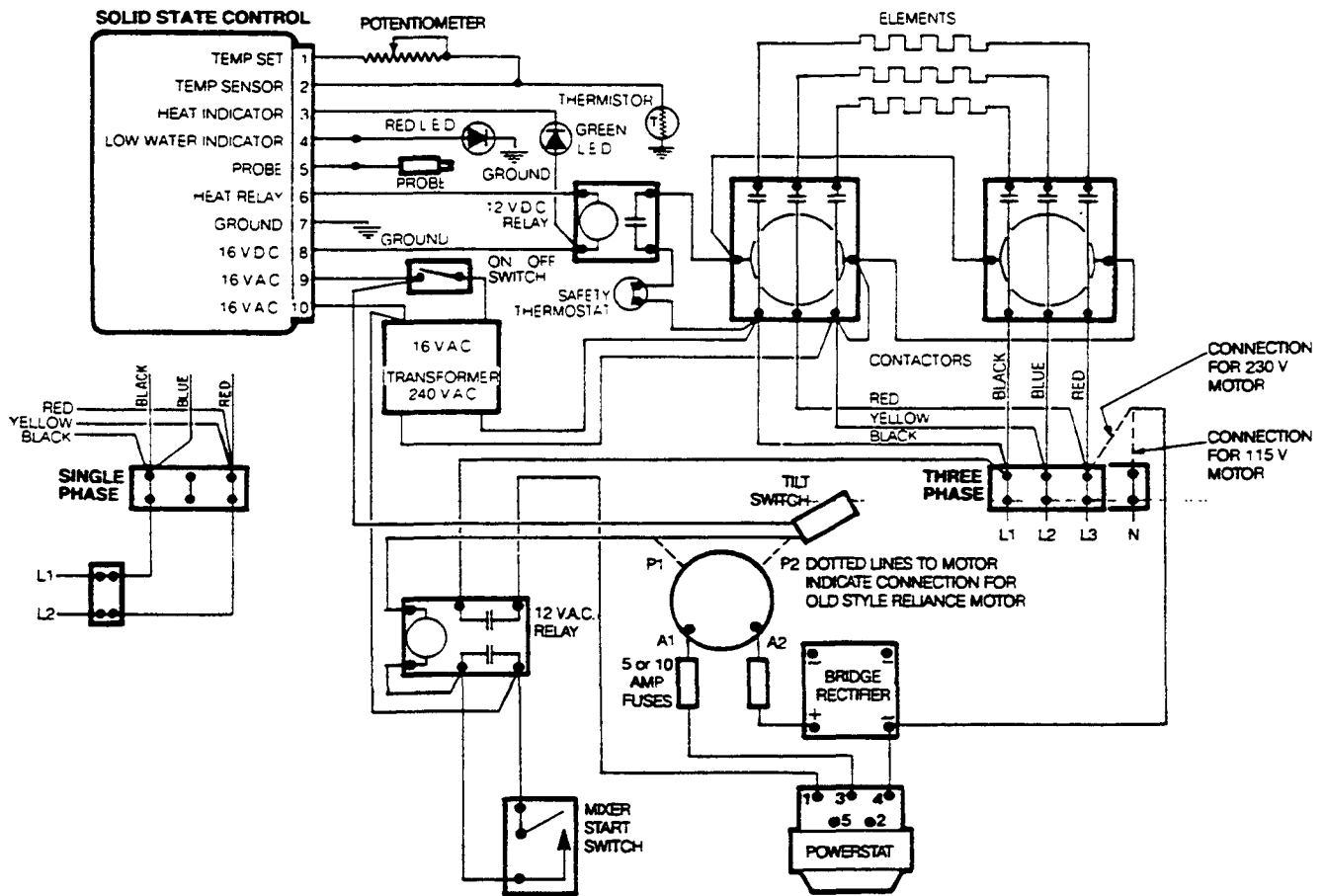
Possible Causes

1. Defective low water level probe.
2. Defective control box.

Fault Isolation Procedure

Step Test

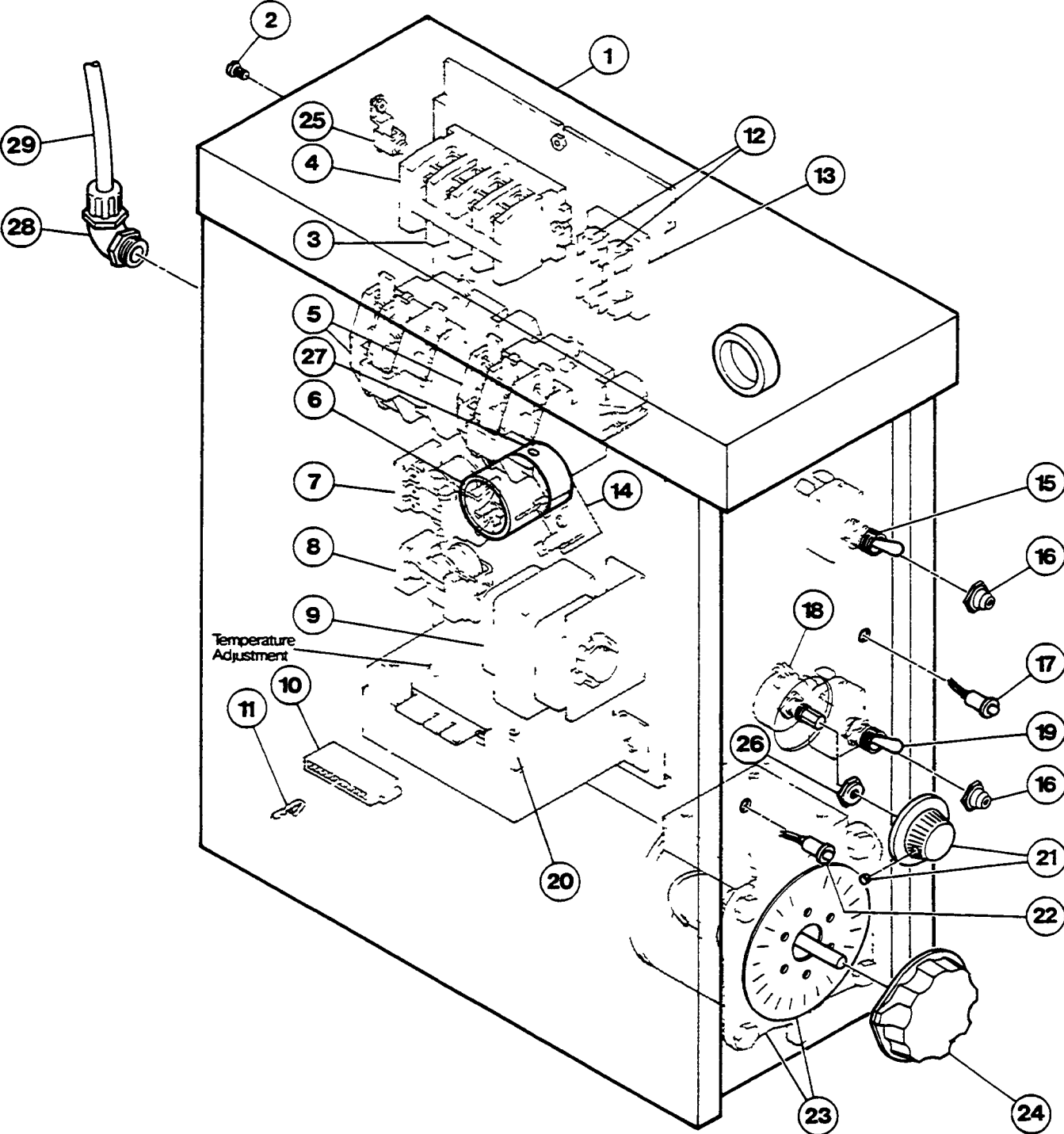
- | Step Test | Result | Remedy |
|---|--------|---|
| 1. Remove wire from low water level probe and ground the wire to the body of the kettle. Does the red LED turn off? | Yes | Replace or clean defective low water level probe. |
| | No | Spray contact cleaner-on-control box terminals and edge connector. Try box again. If problem still exists, replace defective control box. |



ELECTRIC NOTE: DUAL VOLTAGE OF 200/380 SHOWN ON CHART REQUIRE A THREE WIRE SINGLE PHASE OR FOUR WIRE THREE PHASE ELECTRICAL SUPPLY.

		ELECTRICAL SUPPLY . STANDARD WATTAGE										HIGH WATTAGE						
		208V			240V			220/380V		480V			208V		240V		220/380V	
GALS	LITERS	KW	A	A	KW	A	A	KW	A	KW	A	A	KW	A	KW	A	KW	A
			1PH	3PH		1PH	3PH		3PH		1PH	3PH		3PH		3PH		3PH
12	34	11.0	54.9	34.9	14.2	62.1	39.1	11.5	19.8	14.3	29.2	17.7	13.5	41.8	17.6	97.0	14.2	24.0
20	80	13.5	66.7	41.8	17.6	75.7	47.0	14.2	24.0	14.3	29.2	17.7	16.0	48.6	20.8	54.9	17.0	28.1

CONTROL HOUSING



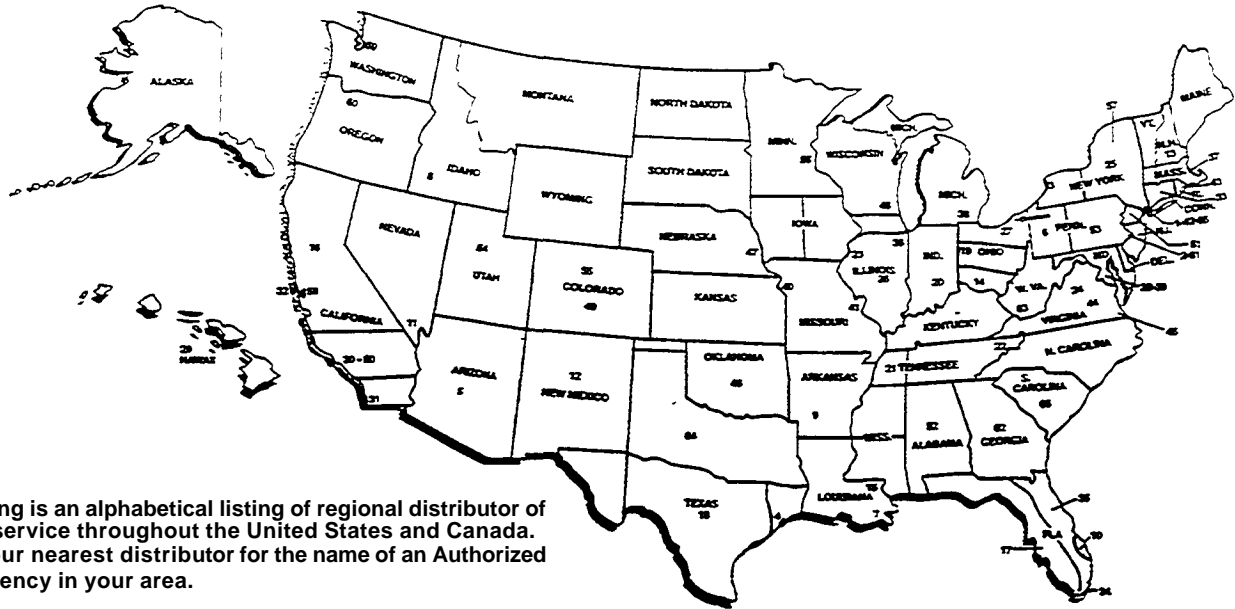
PARTS LIST - CONTROL HOUSING

Item No.	Part No.	Description	Qty.
1	SK50050	Console Cover	1
2	FA11144	Screw, 10-32x1/4"SS	1
3	SK50055	Terminal Block Section	3,4
4	SK50054	Terminal Block End Section	1
5	KE50749	Contactor, 208 - 240 V	2
6	KE50497	Bearing, Trunnion	1
7	KE51227	Relay, 12 VAC	1
8	KE50753	Relay, 12VDC	1
9	KE50752	Transformer, 240/16 V	1
10	KE51225	Edge Connector	1
11	KE51226	Wire Connector Terminal-	10
12	KE51919	Fuse, 10 Amp. (used with 115V motor)	2
	KE51920	Fuse, 5 Amp. (used with 230 V motor)	2
13	KE51139	Fuse Holder (Single)	2
	KE51228	Fuse Holder (Double)	1
14	KE50581	Bridge Rectifier	1
15	KE51955	Switch, Toggle, Momentary	1
16	SK50062	Rubber Boot	2
17	KE50568	LED. Green	1
18	KE50988	Potentiometer	1
19	KE50504	Switch, Toggle. SPST	1
20	KE00458	Solid State Control Box	1
21	KE50569	Knob, Potentiometer	1
22	KE50567	LED. Red	1
23-24	KE51940	Powerstat, 120V	1
	KE51941	Powerstat, 240 V	1
24	KE51246	Knob, Powerstat	1
25	KE50473	Ground Lug	1
26	KE51005	Rotary Seal	1
27	SK50047	Trunnion Lock Collar	1
28	KE51417	Conduit Connector	1
29	KE51916	Conduit (MKET-10-T)	1
	KE51917	Conduit (MKET-20-T)	1

Use only replacement parts which are factory supplied as to preserve the certification of Underwriters Laboratories, American Gas Association, Canadian Standards Association or Canadian Gas Association (as applicable). The use of other than factory supplied replacement parts will void the warranty.

Cleveland MAINTENANCE & REPAIR CENTERS

* Free Performance & Installation Check-Out *



The following is an alphabetical listing of regional distributor of parts and service throughout the United States and Canada. Contact your nearest distributor for the name of an Authorized Service Agency in your area.

- 1 Acme American Repairs
99 Scon Avenue
Brooklyn, NY -11237
(718) 456-6544 1 -800-221 -3026 (National)
- 2 American Kitchen Machines
204 Quarry Street
Philadelphia, PA 19106
(215)627-7760 1 -800-848-7760 (National)
- 3 Appliance Installation & Service
1336 Main Street Buffalo, NY 14209 (716)884-7425
1 -800-722-1252 (National)
- 4 Armstrong Repair Center
3750-A Royalton
Houston, TX 77081
(713)666-7100 1 -800-392-5325 (National)
- 5 Authorized Commercial Service
4832 South 35th Street
Phoenix, AZ 85040
(602)234-2443 1 -800-824-8875 (National)
- 6 Authorized Factory Service
1010 First Avenue
Coraopolis, PA 15108
(412)262-2330 1 -800-223-2862 (National)
- 7 Bana Part, Inc.
1501 Kuebel Street
Harahan, LA 70123
(504)734-0076 1 -800-325-7543 (National)
- 8 Ron's Service 703
E. 44 Boise, ID 83714 (208)375-4073
- 9 Bromley Parts and Service and Service . 10th & Ringo St. Little Rock, AR 72201
(501)374-0281 1-800-482-9269 (National)
10. BGSLouai 3121 N.W. 16th Terrace Pompano Beach, FL 33064 (954)971-0456 1-800-253-0200 (National)
11. Burney's Commercial Service
4480 Aldebaran Avenue Las Vegas, NV 89103
(702)736-0006
1-800-634-7600 (National)
12. CAC, Inc.
610 Industrial Avenue N.E. Albuquerque, NM 87102 (505) 343-6100 1 -800-366-8242 (National)
13. Casco Food Equipment Service Inc.
10 Dunklee Road Bow, NH 03304 (603)224-9173
- 14 Certified Service Center
4946-50 Paddock Road Cincinnati, OH 45237 (513) 242-3139 1-800-543-2060 (National)
15. Chandlers Parts and Service
11656 Darryl Drive Baton Rouge, LA 70815 (504) 272-6620 1-800-349-8888 (National)
16. Commercial Appliance Parts
165 Commerce Circle, Suite B Sacramento, CA 95816-4201 (916) 567-0203
17. Commercial Appliance Service
8416 Laurel Far Circle Building 6, Suite 114 Tampa, Florida 33610 (813)663-0313 1-800-282-4718 (National)
18. Commercial Kitchen Repair Co.
1377 North Brazos San Antonio, TX 78207 (512)735-2811 1-800-292-2120 (National)
- 19 Commercial Parts & Service
1150 West Mount Street Columbus, OH 43223-2295 (614)221-0057
- 20 Commercial Parts & Service
5310 East 25th Street P.O. Box 18688 Indianapolis, IN 46218
(317)545-9655 1 -800-727-8710 (National)
- 21 Commercial Parts & Service
3717 Cherry Road Memphis, TN 38118
(901)366-4587 1 -800-974-9155 (National)
22. Commercial Parts & Service
748 Fesslers Lane Nashville, TN 37210
(615) 244-8050 1 -800-831 -7174 (National)
23. Cones Repair Service
2408 40th Avenue Moline, IL 61265
(309)797-5323
1 -800-716-7070 (National)
- 24 Daubers Inc.
7645 Dynatech Court Springfield, VA 22153
(703)866-3600 1 -800-554-7788 (National)
25. Duffy's Equipment Service
3138 Oneida Street Sauquoit, NY 13456
(315) 737-9401 1 -800-443-8339 (National)
26. Eichenauer Services
130 South Oakland Street Decatur, IL 62522 (217)429-4229 1 -800-342-0240 (National)