

TO TEST INPUTS T7, T8, T9 AND T10 A METER CAPABLE OF READING DC VOLTAGES MUST BE USED.

- 1.) SET METER TO READ DC VOLTAGE
- 2.) PLACE BLACK LEAD TO T2
- 3.) PLACE RED LEAD TO TERMINAL BEING TESTED
- 4.) AN OPEN SWITCH WILL READ 4.7-5.3VDC
A CLOSED SWITCH WILL READ 0-1VDC

TKR	BSTR TEMP CHECK/PAUSE
RAR	RINSE AID RELAY
BV	BOOSTER STEAM VALVE
CB	CIRCUIT BREAKER
1CR	DOOR SAFETY RELAY
2CR	LOW WATER SHUT OFF RELAY
DSS	DOOR SAFETY SWITCH
FU	FUSE
GND	GROUND
HC1	WASH TANK CONTACTOR
HC2	BOOSTER CONTACTOR
1HTR	WASH TANK HEATER
2HTR	BOOSTER HEATER
HWCO	LOW WATER SHUT OFF FLOAT
LT1	POWER ON LIGHT
LT2	CYCLE LIGHT
MR	MANUAL RINSE SWITCH
MW	MANUAL WASH SWITCH
1M	PUMP MOTOR CONTACTOR
1MOL	PUMP MOTOR OVERLOAD
1MTR	PUMP MOTOR
PB	PUSHBUTTON START SWITCH
PS	POWER ON SWITCH
RWV	RINSE WATER VALVE
T1	CONTROL TRANSFORMER
TS1	WASH THERMOSTAT
TS2	BOOSTER THERMOSTAT
TS3	WASH THERMOSTAT (STEAM)
TS4	BOOSTER THERMOSTAT(STEAM)
TS6	BOOSTER SAFETY THERMOSTAT
TS7	TANK HT SAFETY THERMOSTAT
WV	WASH TANK STEAM VALVE

DIAGRAM STATE
POWER OFF
DOORS CLOSED
TANKS EMPTY
END OF CYCLE



Jumper Settings
JB-1 = Open
JB-2 = Closed
JB-3 = Open

MODEL	DATE	NUMBER/REV
USN-10	17-JAN-03	0510601 REV A

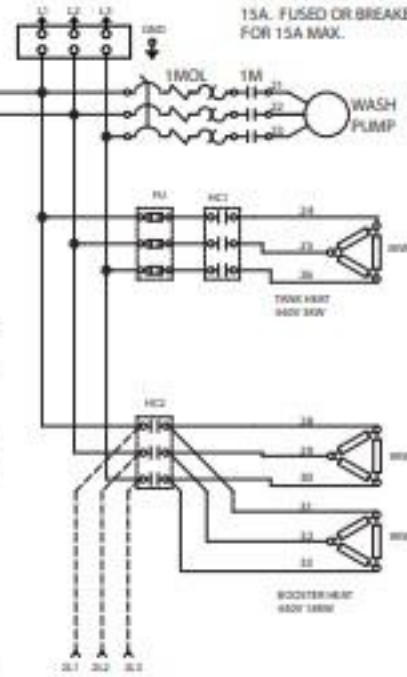
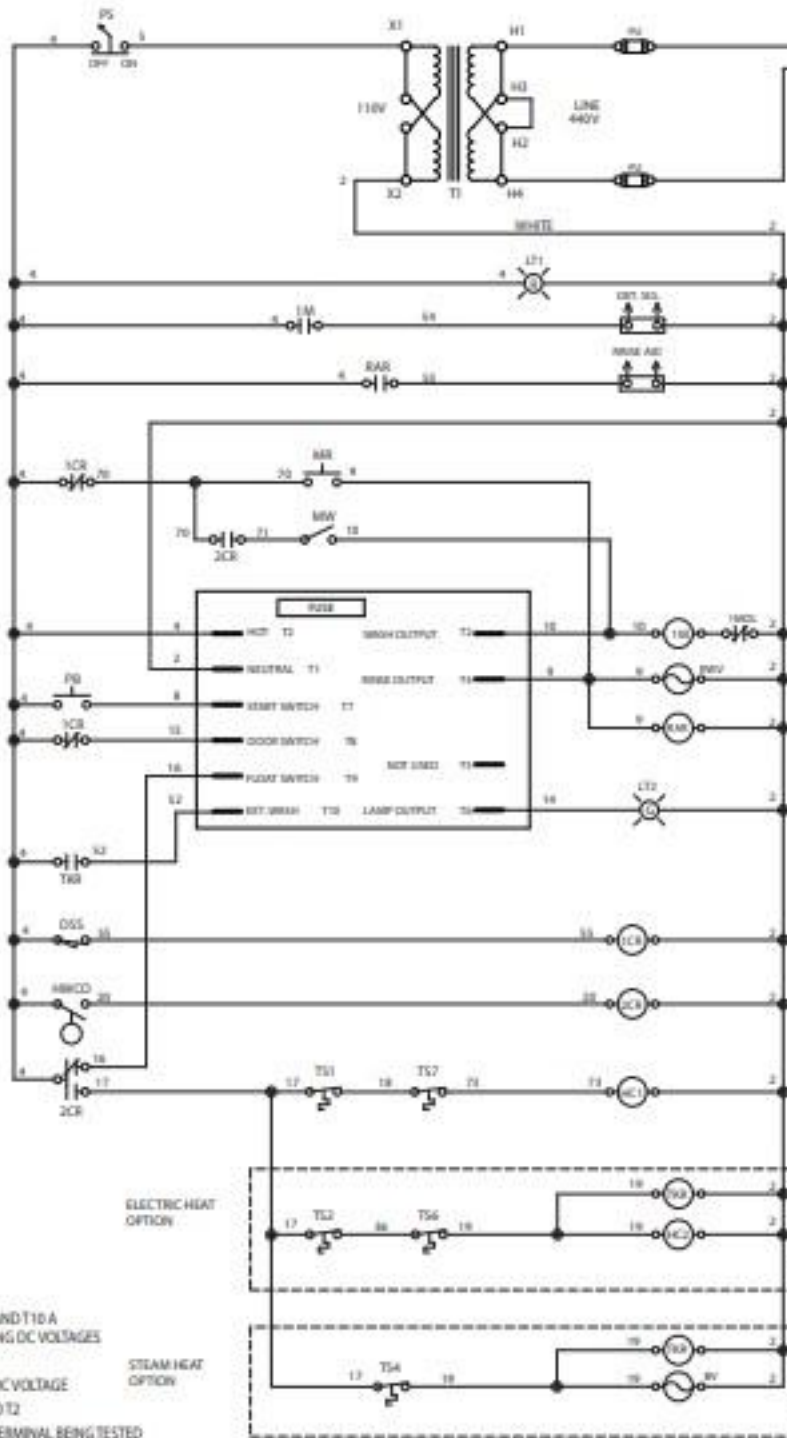
For Machines Built Prior to S/N U10063397

SINGLE POINT CONNECTION

TO CUSTOMER DISCONNECT SWITCH, 25 FULL LOAD AMPS AT 440V 60HZ 3 PHASE. MINIMUM CIRCUIT CAPACITY 30A. FUSED OR BREAKER FOR 30A MAX.

OPTIONAL 2 POINT CONNECTION

TO CUSTOMER DISCONNECT SWITCH, 6 FULL LOAD AMPS AT 440V 60HZ 3 PHASE. MINIMUM CIRCUIT CAPACITY 15A. FUSED OR BREAKER FOR 15A MAX.



OPTIONAL SECOND CONNECTION AT BOOSTER HEATER CONTACTOR

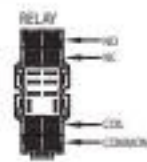
TO CUSTOMER DISCONNECT SWITCH, 20 FULL LOAD AMPS AT 440V 60HZ 3 PHASE. MINIMUM CIRCUIT CAPACITY 25A. FUSED OR BREAKER FOR 25A MAX.

TO TEST INPUTS T7, T8, T9 AND T10 A METER CAPABLE OF READING DC VOLTAGES MUST BE USED.

- 1) SET METER TO READ DC VOLTAGE
- 2) PLACE BLACK LEAD TO T2
- 3) PLACE RED LEAD TO TERMINAL BEING TESTED
i.e. PLACE RED LEAD TO T8 TO TEST DOOR SW.
- 4) AN OPEN SWITCH WILL READ 4.7-5.3VDC
A CLOSED SWITCH WILL READ 0-1VDC

ELECTRIC HEAT OPTION
STEAM HEAT OPTION

DISHWASHER STATE
POWER OFF
DOORS CLOSED
TANKS EMPTY



For Machines beginning with S/N U10063397 and above.

1CR	DOOR SAFETY RELAY
2CR	LOW WATER SHUT OFF RELAY
1HTR	WASH TANK HEATER
2HTR	BOOSTER HEATER
1M	WASH MOTOR CONTACTOR
1MOL	WASH MOTOR OVERLOAD
1MTR	WASH PUMP MOTOR
BV	BOOSTER STEAM VALVE
DSS	DOOR SAFETY SWITCH
FU	FUSE
GND	GROUND
HC1	WASH HEATER CONTACTOR
HC2	BOOSTER HEATER CONTACTOR
HWCO	LOW WATER SHUT OFF FLOAT
LT1	POWER ON LIGHT
LT2	CYCLE LIGHT
MR	MANUAL RINSE SWITCH
MW	MANUAL WASH SWITCH
PB	PUSHBUTTON START SWITCH
PS	POWER ON SWITCH
BAR	RINSE AID RELAY
RWV	RINSE WATER VALVE
T1	CONTROL TRANSFORMER
TS1	WASH THERMOSTAT
TS2	BOOSTER THERMOSTAT
TS3	WASH THERMOSTAT (STEAM)
TS4	BOOSTER THERMOSTAT (STEAM)
TS6	BOOSTER SAFETY THERMOSTAT
TS7	WASH HEAT SAFETY THERMOSTAT
TRR	RSTR TEMP CHECK RELAY
WV	WASH TANK STEAM VALVE