

# Champion®

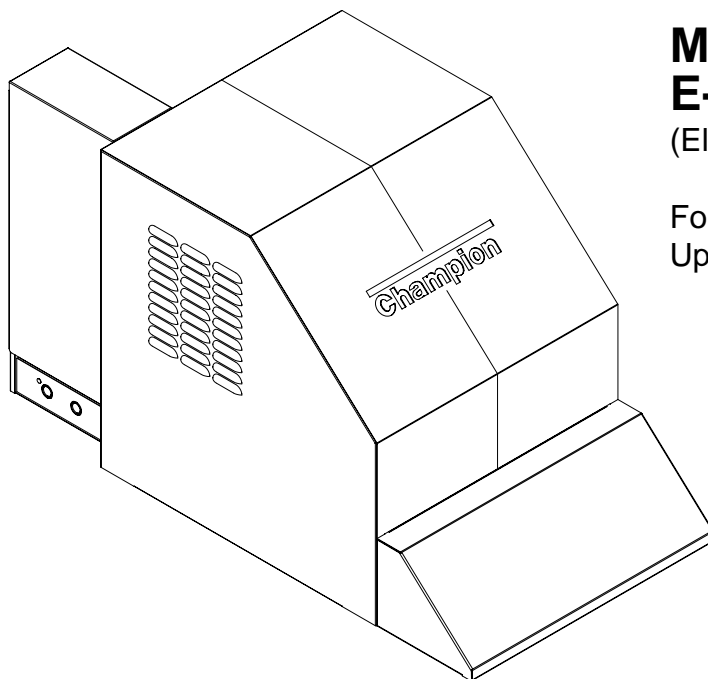
The Dishwashing Machine Specialists



---

## *Installation/Operation Manual with Service Replacement Parts*

---



### **Model EBD E-series Blower Dryer Option** (Electric or Steam)

For all Rack Conveyor and  
Upright Conveyor Dishwashers



Machine Serial No.



Issue Date: 4.23.15

**Manual P/N 114896 rev. C**

3765 Champion Boulevard  
Winston-Salem, NC 27105  
336/661-1556 Fax: 336/661-1660  
Toll-free: 800/858-4477

2674 N. Service Road, Jordan Station  
Ontario, Canada L0R 1S0  
905/562-4195 Fax: 905/562-4618  
Toll-free: 800/263-5798

Printed in the USA



For future reference, record your blower dryer information in the box below.

Model Number _____	Dishwasher S/N _____
Voltage _____ Hertz _____	Phase _____
Service Agent _____	Tel: _____
Parts Distributor _____	Tel: _____

### National Service Department

**In Canada:**

Toll-free: 800/ 263-5798

Tel: 905/ 562-4195

Fax: 905/ 562-4618

email: [service@moyerdiebellimited.com](mailto:service@moyerdiebellimited.com)

**In the USA:**

Toll-free: 800/ 858-4477

Tel: 336/ 661-1556

Fax: 336/ 661-1660

email: [service@championindustries.com](mailto:service@championindustries.com)

### ATTENTION:

The model no., serial no., voltage, Hz and phase are needed to identify your machine and to answer questions.

**The dishwasher machine data plate is located on the side of the dishwasher control cabinet.**

Please have this information ready if you call for service assistance.

*The USGBC and the CaGBC Member Logos are trademarks owned by the U.S. Green Building Council and The Canadian Green Building Council, respectively, and are used by permission. The logos signify only that Champion Industries is USGBC member and CaGBC member; USGBC and CaGBC do not review, certify nor endorse the products or services offered by its members.*

# **REGISTER YOUR PRODUCT ONLINE**

*Make sure you are connected to the internet then enter the address below.*

**In the U.S.A**

**<http://www.championindustries.com/register>**

**In Canada**

**<http://www.championindustries.com/canada/register>**

**Champion<sup>®</sup>**

The Dishwashing Machine Specialists

# PRODUCT REGISTRATION BY FAX

**COMPLETE THIS FORM AND FAX TO:**

**(336) 661-1660 in the USA**

**1-(800) 204-0109 in Canada**

## PRODUCT REGISTRATION CARD

Model

Serial #

Date of Installation: \_\_\_/\_\_\_/\_\_\_

Company Name: \_\_\_\_\_

Address: \_\_\_\_\_  
(Street) Province Postal Code

Telephone #: ( ) \_\_\_\_\_ --- \_\_\_\_\_

Contact: \_\_\_\_\_

Installation Company: \_\_\_\_\_

Address: \_\_\_\_\_

Telephone #: \_\_\_\_\_

Contact: \_\_\_\_\_

**FAILURE TO REGISTER YOUR PRODUCT MAY VOID YOUR WARRANTY**

**IMPORTANT IMPORTANT**

## Revision History

A revision might be a part number change, a new instruction, or other information that was not available at print time. We reserve the right to make changes to these instructions without notice and without incurring any liability by making the changes. Equipment owners may request a revised manual, at no charge, by calling 1 (800) 858-4477 in the USA or by calling 1 (800) 263-5798 in Canada.

<b>Revision Date</b>	<b>Revised Pages</b>	<b>Serial Number Effectivity</b>	<b>Revision Description</b>
3.29.11	All	Engineered System	Released First Edition
5.1.11	10-11, 14-15	-----	Corrected parts list replacing 2PDT relay with 3PDT relay
8.23.12	10-11, 14-15	J12073063	Changed piezo switches to electro-mechanical
4.23.15	12-13, 16-17	J15033463	Added motor bracket for high efficiency TEFC motor

## LIMITED WARRANTY

Champion Industries Inc. (herein referred to as Champion), 3765 Champion Blvd., Winston-Salem, North Carolina 27105, and P.O. Box 301, 2674 N. Service Road, Jordan Station, Canada, L0R 1S0, warrants machines, and parts, as set out below.

**Warranty of Machines:** Champion warrants all new machines of its manufacture bearing the name "Champion" and installed within the United States and Canada to be free from defects in material and workmanship for a period of one (1) year after the date of installation or fifteen (15) months after the date of shipment by Champion, whichever occurs first. [See below for special provisions relating to glasswashers.] The warranty registration card must be returned to Champion within ten (10) days after installation. If warranty card is not returned to Champion within such period, the warranty will expire after one year from the date of shipment.

Champion will not assume any responsibility for extra costs for installation in any area where there are jurisdictional problems with local trades or unions.

If a defect in workmanship or material is found to exist within the warranty period, Champion, at its election, will either repair or replace the defective machine or accept return of the machine for full credit; provided; however, as to glasswashers, Champion's obligation with respect to labor associated with any repairs shall end (a) 120 days after shipment, or (b) 90 days after installation, whichever occurs first. In the event that Champion elects to repair, the labor and work to be performed in connection with the warranty shall be done during regular working hours by a Champion authorized service technician. Defective parts become the property of Champion. Use of replacement parts not authorized by Champion will relieve Champion of all further liability in connection with its warranty. In no event will Champion's warranty obligation exceed Champion's charge for the machine. The following are not covered by Champion's warranty:

- a. Lighting of gas pilots or burners.
- b. Cleaning of gas lines.
- c. Replacement of fuses or resetting of overload breakers.
- d. Adjustment of thermostats.
- e. Adjustment of clutches.
- f. Opening or closing of utility supply valves or switching of electrical supply current.
- g. Cleaning of valves, strainers, screens, nozzles, or spray pipes.
- h. Performance of regular maintenance and cleaning as outlined in operator's guide.
- i. Damages resulting from water conditions, accidents, alterations, improper use, abuse, tampering, improper installation, or failure to follow maintenance and operation procedures.
- j. Wear on Pulper cutter blocks, pulse vanes, and auger brush.

*Examples of the defects not covered by warranty include, but are not limited to:* (1) Damage to the exterior or interior finish as a result of the above, (2) Use with utility service other than that designated on the rating plate, (3) Improper connection to utility service, (4) Inadequate or excessive water pressure, (5) Corrosion from chemicals dispensed in excess of recommended concentrations, (6) Failure of electrical components due to connection of chemical dispensing equipment installed by others, (7) Leaks or damage resulting from such leaks caused by the installer, including those at machine table connections or by connection of chemical dispensing equipment installed by others, (8) Failure to comply with local building codes, (9) Damage caused by labor dispute.

**Warranty of Parts:** Champion warrants all new machine parts produced or authorized by Champion to be free from defects in material and workmanship for a period of 90 days from date of invoice. If any defect in material and workmanship is found to exist within the warranty period Champion will replace the defective part without charge.

**DISCLAIMER OF WARRANTIES AND LIMITATIONS OF LIABILITY. CHAMPION'S WARRANTY IS ONLY TO THE EXTENT REFLECTED ABOVE. CHAMPION MAKES NO OTHER WARRANTIES, EXPRESS OR IMPLIED, INCLUDING, BUT NOT LIMITED, TO ANY WARRANTY OF MERCHANTABILITY, OR FITNESS OF PURPOSE. CHAMPION SHALL NOT BE LIABLE FOR INCIDENTAL OR CONSEQUENTIAL DAMAGES. THE REMEDIES SET OUT ABOVE ARE THE EXCLUSIVE REMEDIES FOR ANY DEFECTS FOUND TO EXIST IN CHAMPION DISHWASHING MACHINES AND CHAMPION PARTS, AND ALL OTHER REMEDIES ARE EXCLUDED, INCLUDING ANY LIABILITY FOR INCIDENTALS OR CONSEQUENTIAL DAMAGES.**

Champion does not authorize any other person, including persons who deal in Champion dishwashing machines to change this warranty or create any other obligation in connection with Champion Dishwashing Machines.

# Table of Contents

## EBD Blower Dryer

<i>Revision History</i> .....	<i>i</i>
<i>Limited Warranty</i> .....	<i>ii</i>
<i>Model Descriptions</i> .....	<i>iv</i>
<b>Installation</b> .....	<b>1</b>
<i>Receiving</i> .....	<i>1</i>
<i>Mounting the Blower Dryer to the Dishwasher</i> .....	<i>2</i>
<i>Electrical Connections</i> .....	<i>4</i>
<i>Steam Heat Steam Connection</i> .....	<i>5</i>
<i>Steam Heat Condensate Connection</i> .....	<i>5</i>
<b>Initial Start-up</b> .....	<b>6</b>
<i>Installation Check List</i> .....	<i>6</i>
<i>Blower Dryer and Dishwasher Control Panels</i> .....	<i>6</i>
<b>Operation</b> .....	<b>7</b>
<i>Normal Blower Dryer Operation</i> .....	<i>7</i>
<i>Blower Dryer Shut-down Operation</i> .....	<i>7</i>
<b>Cleaning, Maintenance and Troubleshooting</b> .....	<b>8</b>
<b>Service Replacement Parts</b> .....	<b>9</b>
<b>Electrical Schematic</b> .....	<b>21</b>

## **Model Description**

### **EBD Blower Dryer**

Electric 12KW heater with Automatic Shut-off  
2 HP Blower Motor

Steam 85 lbs/hr at 15-30 PSI with Automatic Shut-off  
2 HP Blower Motor

**NOTE:**

The installation of the Blower Dryer must be performed by qualified service personnel. Problems due to improper installation are not covered by the Warranty.

**NOTE:**

The installation of the blower dryer must comply with all local electrical, plumbing, safety and health codes.

**NOTE:**

The Blower Dryer was fully tested before leaving the factory. It was disassembled from the dishwasher and shipped on its own pallet.

**CAUTION:**

Be careful when lifting and moving the blower dryer to prevent damage to the unit.

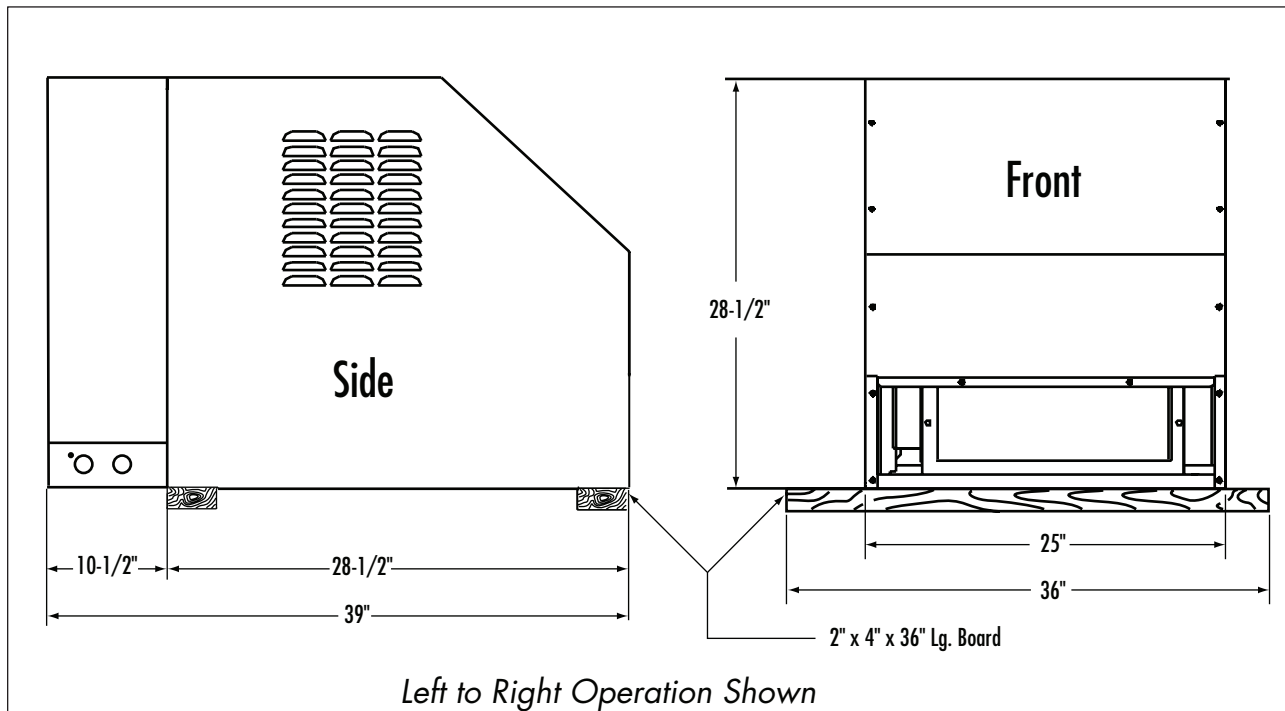
1. Inspect the blower dryer and pallet for signs of shipping damage.
2. Turn to the front of this manual and follow the instructions to register your blower dryer and dishwasher online. The blower dryer does not have a serial number; therefore, the blower dryer will be registered when the dishwasher is registered.
3. Move the blower dryer and the dishwasher near their permanent locations.
4. Compare the installation site utility connections with the machine utility connections and make sure they are the same.
5. Follow the installation instructions contained in this manual to mount the blower dryer to the top of the dishwasher.
6. Follow the dishwasher Installation/Operation Instructions Manual that was shipped with the dishwasher to install the dishwasher.
7. Follow the operation instructions contained in this manual to operate the blower dryer.

## Mounting the Blower Dryer to the Dishwasher

The blower dryer is shipped separately on its own pallet . Refer to the diagrams below and on the next page to mount the blower dryer to the top of the dishwasher.

To mount the blower dryer:

1. Refer to the diagram below noting the placement of (2) 2 X 4 boards to lift the BD when using a forklift.
2. Use 4 men to lift and place the unit on the dishwasher if a forklift is not available. The BD weighs 225 lbs. The 2 X 4's are not used if placing manually.



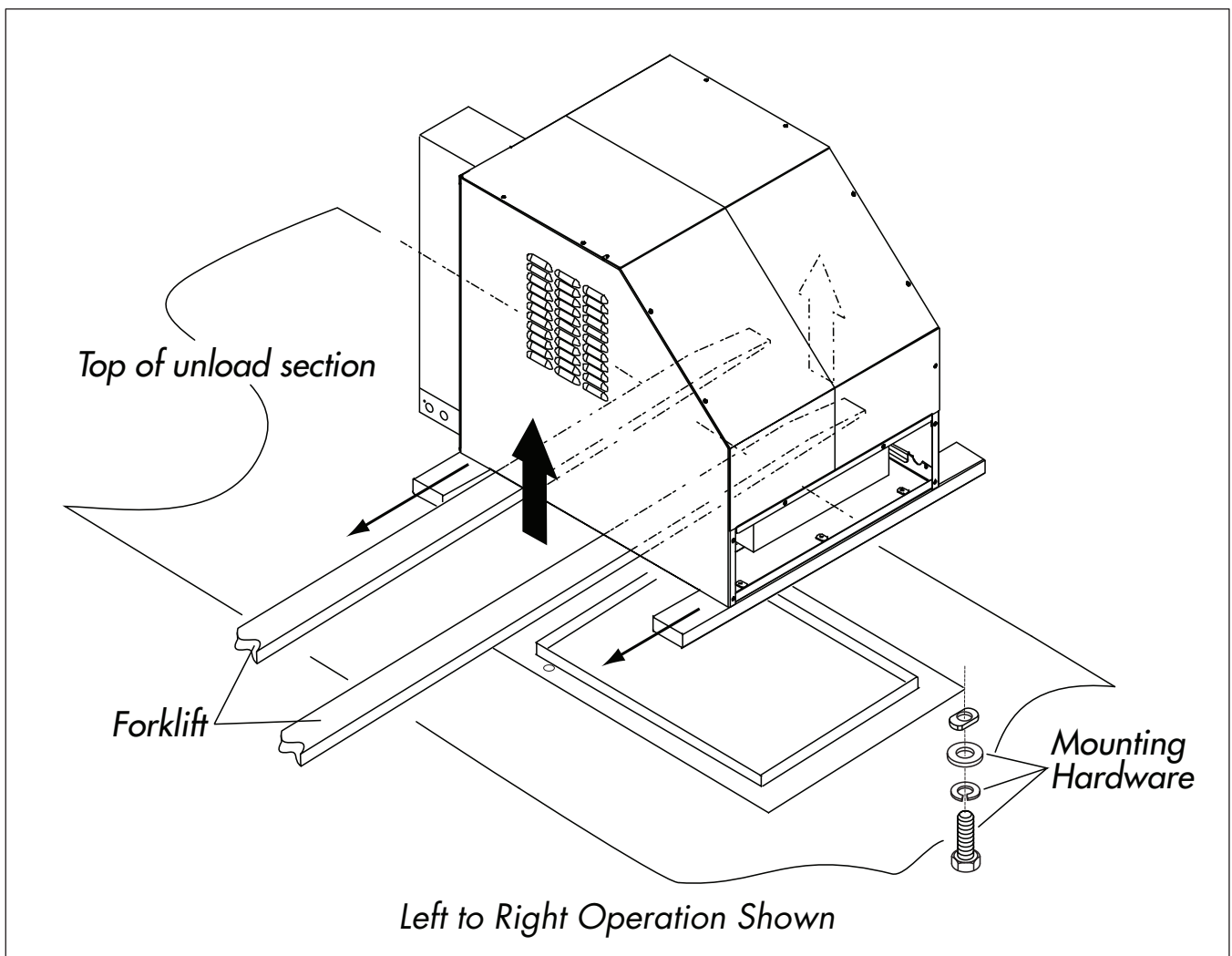
*2 x 4 board placement when lifting the blower dryer with a forklift.*

**! CAUTION !**

**Use extreme caution and follow all safety procedures when lifting and moving the blower dryer assembly.**

### Mounting the Blower Dryer to the Dishwasher (continued)

3. Position the Blower dryer over the dishwasher blower dryer opening.
4. Lower to a height of approximately 2" above the opening.
5. Carefully lower the backside of the blower dryer as you remove the rear board from underneath the blower dryer.
6. Carefully lower the front of the blower dryer over the opening as you remove the last board.
7. Bolt the unit using flat washers, lock washers, and 5/16-18 x 3/4" hex head bolts.
8. Connect the electrical or steam supply lines after the dishwasher is permanently installed.
9. Attach the blower dryer hood intake (not shown) to the end of the blower dryer.
10. Blower dryer mounting is complete.



Lifting the blower dryer with a forklift.

## Electric Heat Blower Dryer Electrical Connections



**WARNING:**

Electrocution or serious injury may result when working on an energized circuit.

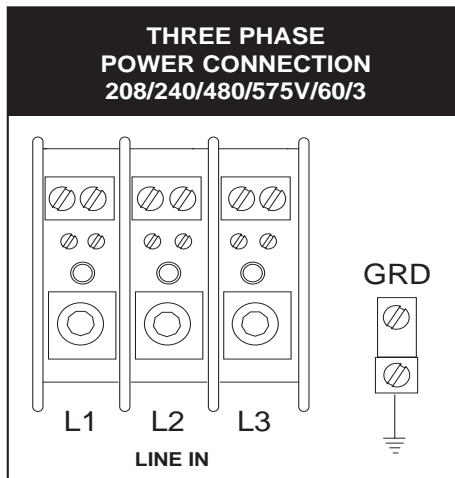
Disconnect power at the main breaker or service disconnect switch before working on the circuit.

Lock-out and tag the breaker to indicate that work is being performed on the circuit.

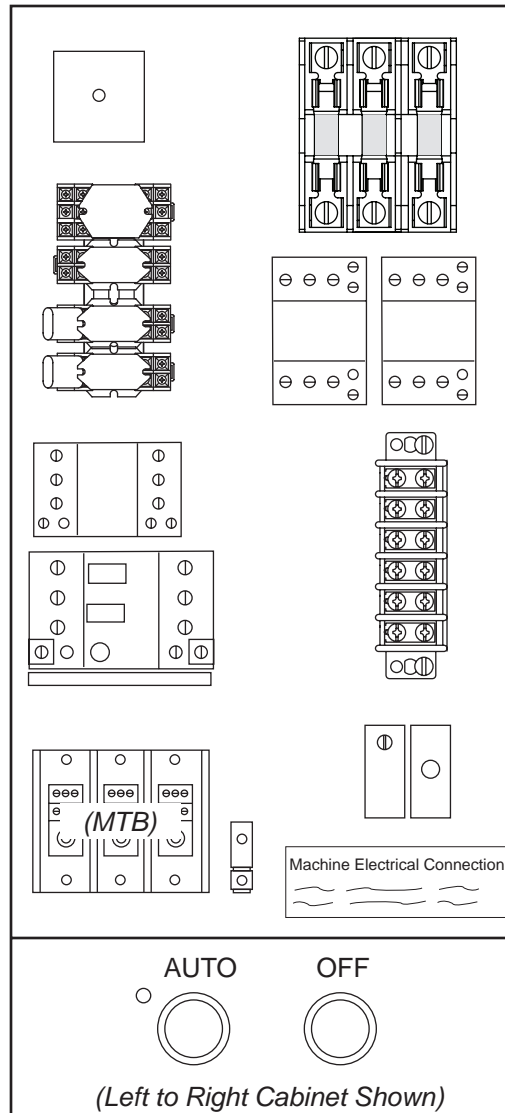
Main electrical power to the blower dryer is connected at the main terminal block located at the bottom of the blower dryer control cabinet located on the side of main blower. Interconnect cables from the dishwasher to the blower dryer were disconnected prior to shipment and rolled back behind the dishwasher control cabinet. Reconnect these cables after mounting the blower dryer.

To connect main power:

1. Remove the control cabinet cover and locate the main terminal block (MTB) in the corner of the cabinet.
2. Refer to the **Machine Electrical Connection Data Plate** located near the main terminal block and make sure that the incoming power supply matches the machine's electrical requirements.
3. Connect the incoming 3-phase power as shown in the illustration below.

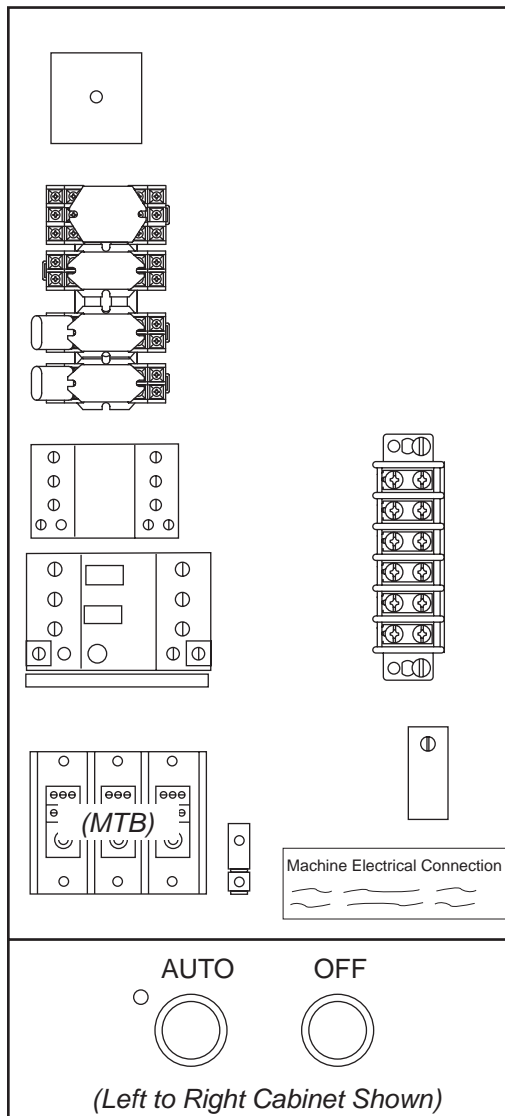


Electric Heat Main terminal block (MTB).

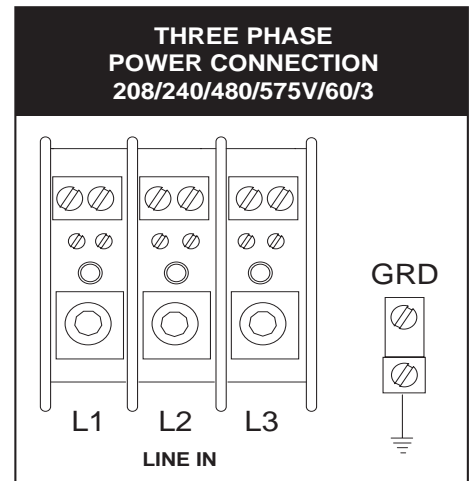


Electric Heat Blower dryer control cabinet.

## Steam Heat Blower Dryer Electrical Connections



Steam Heat Blower dryer control cabinet.



Steam Heat Main terminal block (MTB).

To connect main power:

1. Remove the control cabinet cover and locate the main terminal block (MTB) in the corner of the cabinet.
2. Refer to the **Machine Electrical Connection Data Plate** located near the main terminal block and make sure that the incoming power supply matches the machine's electrical requirements.
3. Connect the incoming 3-phase power as shown in the illustration above.
4. Reconnect the cables between the dishwasher and the blower dryer after mounting the blower dryer to the dishwasher. These cables were disconnected prior to shipment and rolled back behind the dishwasher control cabinet.

## Steam Heat Blower Dryer Steam Connection

The steam inlet connection is 3/4" NPT rated at 85 lbs./hr. at 15-30 PSI.

## Steam Heat Blower Dryer Steam Condensate Connection

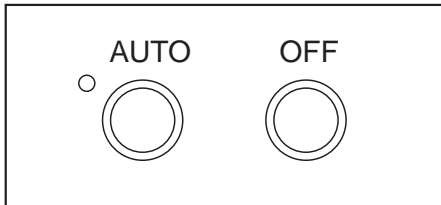
The steam connection is 1/2" NPT return to drain or boiler (no back pressure).

## Installation Check List

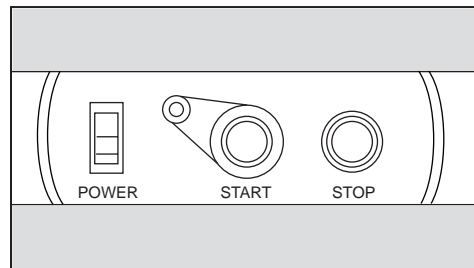
1. Make sure the dishwasher is permanently located and the blower dryer is properly mounted to the dishwasher.
2. Remove any protective film from the blower dryer.
3. Check the interior of the blower dryer for foreign material.
4. Make sure the dishwasher curtains are in their proper locations.
5. Make sure the dishwasher exhaust vent system is adjusted correctly.
6. Make sure all utility connections are complete.
7. Make sure the blower dryer panels and covers are secure.
8. Turn the main power to the dishwasher ON at the main disconnect breaker or switch.
9. Turn the main power to the blower dryer ON at the main disconnect breaker or switch.
10. Turn steam supply on for the dishwasher and the blower dryer (if applicable).

## Blower Dryer and Dishwasher Control Panels

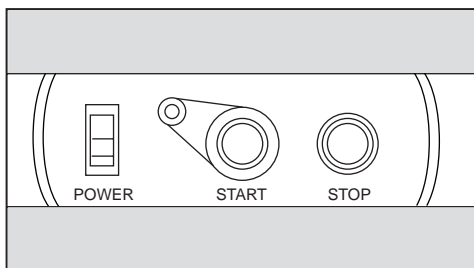
The blower dryer operates in combination with dishwasher. The blower dryer control panel, the rack conveyor dishwasher control panel and the upright conveyor dishwasher control panels are shown below.



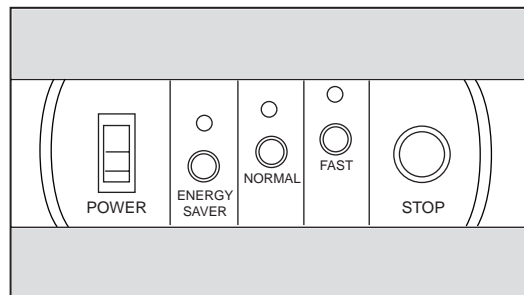
*EBD Blower Dryer Control Panel*



*E-series Rack Conveyor Dishwasher Control Panel*



*E-series Upright Conveyor Dishwasher Control Panel*



*E2-series Upright Conveyor Dishwasher Control Panel*

## Normal Blower Dryer Operation

**! ATTENTION !  
THE BLOWER DRYER RUNS WHENEVER THE DISHWASHER PUMPS ARE ON.**

1. Press the AUTO BUTTON on the blower dryer control panel.
2. The Green indicator light will illuminate.
3. Turn the dishwasher POWER switch to the ON position.
4. Push the START button (or speed select button on the E2 series upright machine).
5. The conveyor will begin to run.

FOR RACK CONVEYOR DISHWASHERS:

6. Insert a dish rack of wares into the load end of the dishwasher.  
The wash pumps will run.

FOR UPRIGHT CONVEYOR DISHWASHERS:

7. Load the conveyor belt with wares.  
The pumps will run when the electric eye is activated.
8. **THE BLOWER DRYER RUNS.**
9. When the dishwasher pumps stop running, the blower dryer runs for 30 seconds after the dishwasher pumps stop.

**! ATTENTION !  
THE BLOWER DRYER STOPS WHENEVER A CONVEYOR JAM CONDITION  
OCCURS OR THE UPRIGHT CONVEYOR SHUT-OFF SHELF IS OPERATED.**

## Blower Dryer Shut-down Operation

1. Press the OFF button on the blower dryer control panel.
2. The Green indicator light will go out.
3. If the blower dryer was running when the OFF button was pressed, then the blower dryer will run for an additional 30 seconds and then stop.

## Cleaning

Daily - At the End of the Day or every 2 hours of continuous operation

1. Inspect the interior of the blower dryer section for foreign material.
2. Flush the interior of the blower dryer section with fresh water.  
**DO NOT SPRAY WATER DIRECTLY INTO THE BLOWER NOZZLE.**
3. Wipe the exterior with a soft cloth and mild detergent.  
**DO NOT HOSE THE EXTERIOR OF THE BLOWER DRYER WITH WATER.**

## Maintenance

Every 6 Months

Contact your authorized service agent to perform bi-annual preventive maintenance and cleaning.

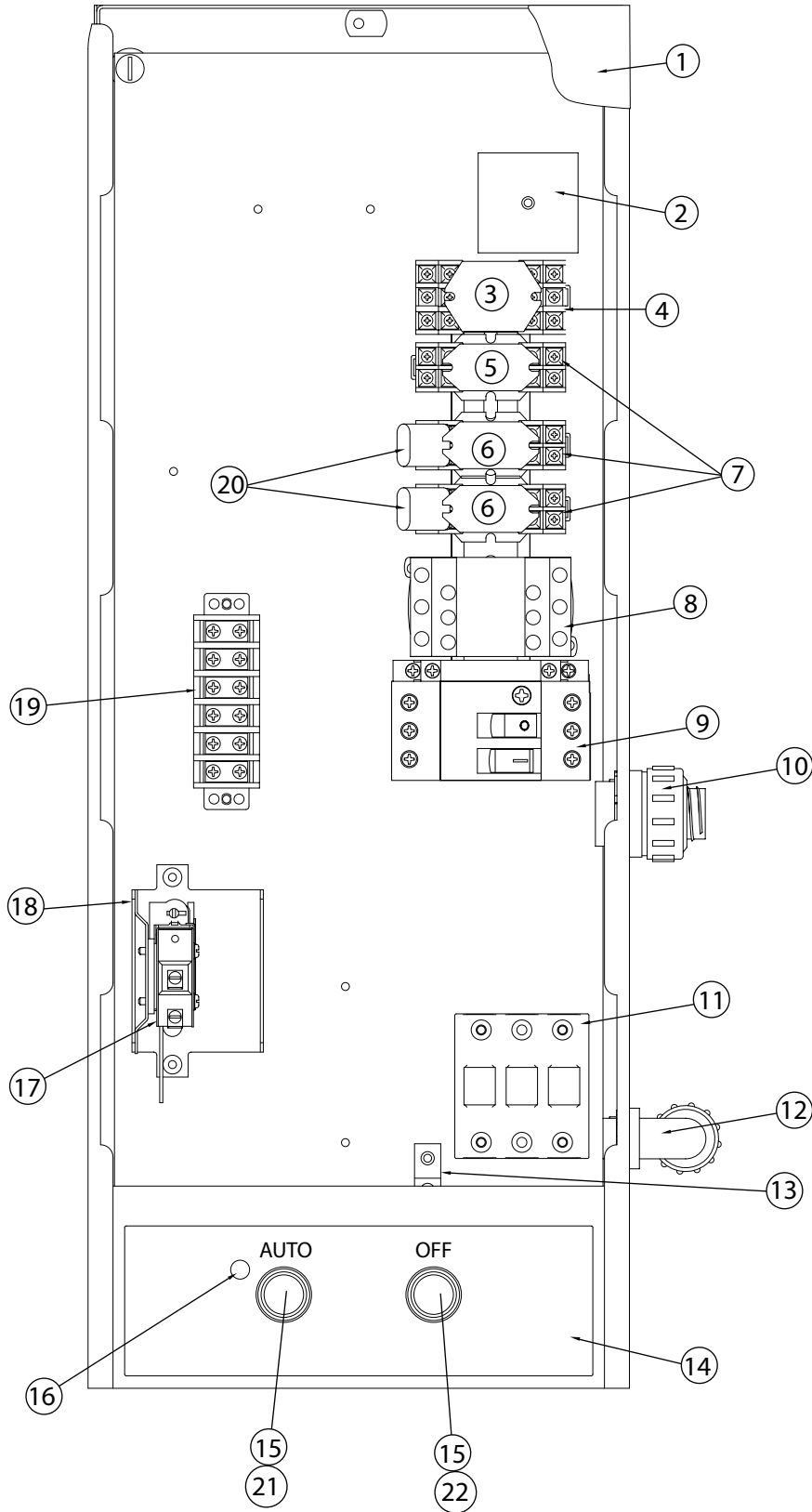
## Troubleshooting

Condition	Cause	Solution
Blower dryer will not run.	Dishwasher doors open. Main power OFF. Dishwasher OFF Blower dryer OFF Dishwasher pumps OFF. Conveyor jammed. Conveyor shut-off shelf on the upright conveyor dishwasher is operated.	Close doors. Check breaker on panel. Turn dishwasher ON. Press Auto Switch Load wares in dishwasher. Clear jam. Reset the conveyor shut-off shelf to the unoperated position.
Poor drying results.	Dishwasher pumps OFF - Blower is in a 30 second cool down mode. Blower dryer hi-limit tripped. Blower dryer thermostat defective. Dishwasher curtains missing or placed wrong. Dishwasher vents misadjusted. Dishroom ventilation not working properly.	Insert wares in dishwasher to start wash pumps. Contact Service Agent. Contact Service Agent. Check curtain placement. Check adjustments. Contact your Building Maintenance Dept.

# Service Replacement Parts

<b>Illustrations</b>	<b>Page</b>
Control Cabinet - Steam Heat .....	10
Blower Dryer - Steam Heat.....	12
Control Cabinet - Electric Heat.....	14
Blower Dryer - Electric Heat .....	16
Blower Dryer Panels.....	18
Electrical Schematic .....	21

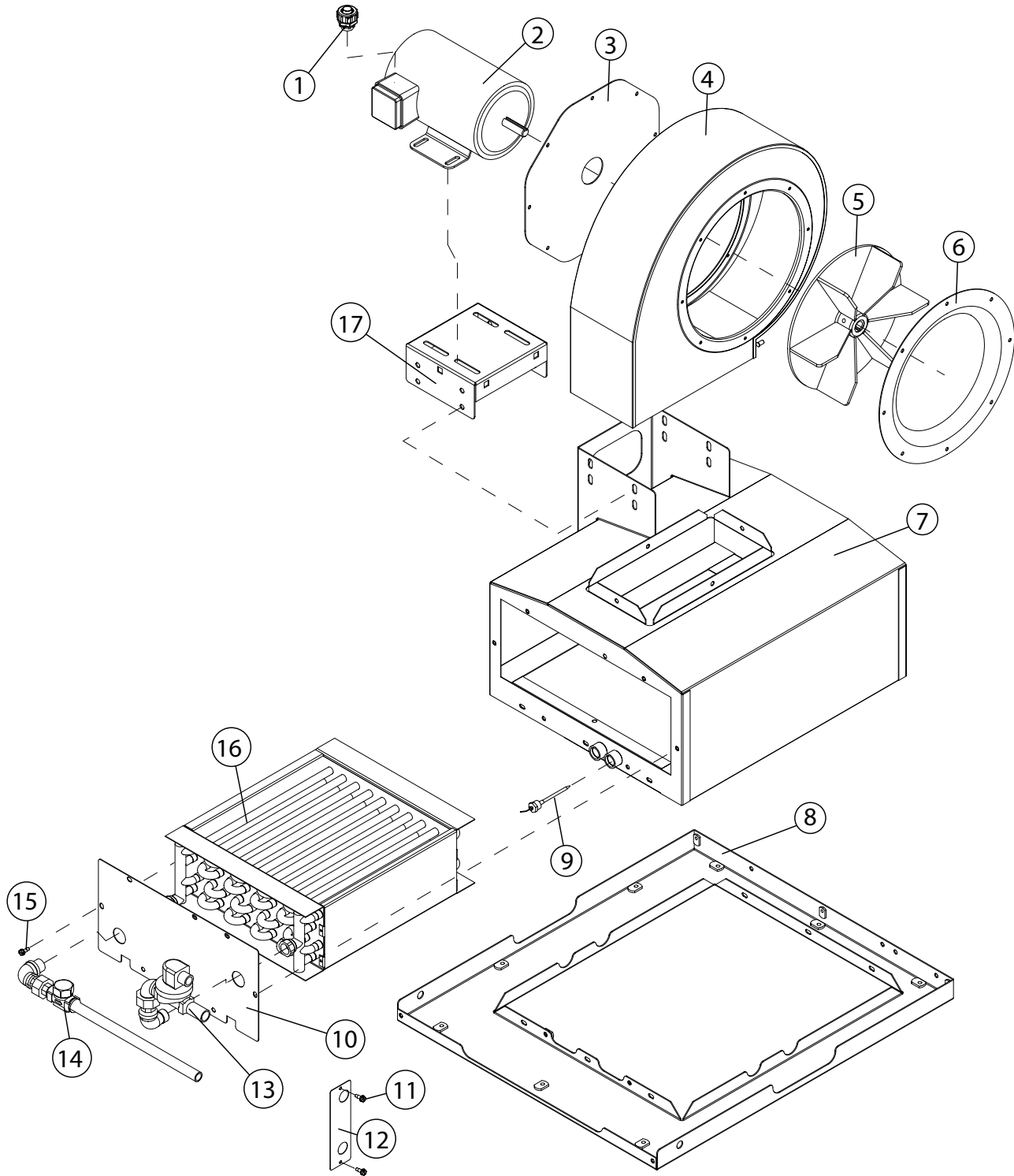
Control Cabinet - Steam Heat



Right to Left Operation Shown

Item No.	Part No.	Description	Qty.
1	333479	COVER, EBD CONTROL CABINET	1
2	114413	TIMER, 30 SECONDS	1
3	112382	RELAY, 3PDT, 10A, 120VAC	1
4	112415	SOCKET, RELAY 3-POLE	1
5	111068	RELAY, 2PDT, 10A 120VAC	2
6	111067	RELAY, 2PDT, 10A 24VAC	2
7	111036	SOCKET, RELAY	3
8	108122	CONTACTOR, 3-POLE 12A	1
9	111629	MOTOR, STARTER, 6-10A, 208/240V/60/3	1
--	111627	MOTOR, STARTER, 2.5-4A, 480/575V/60/3	1
10	110919	FITTING, STRAIGHT 1" SEALTITE	1
11	111833	BLOCK, TERMINAL 175A, 3-POLE 600V	1
12	110837	FITTING, ELBOW 1/2" CONDUIT SEALTITE	1
13	103310	LUG, GROUND	1
14	114729	SWITCH, PLATE, AUTO/OFF PLASTIC	1
15	114910	SWITCH, PIEZO (Prior to S/N J12073063)	2
16	900915	KIT, LIGHT, INDICATOR GREEN 24VDC	1
17	114488	THERMOSTAT, CONTROL	1
18	322076	BRACKET, MOUNTING THERMOSTAT	1
19	100294	STRIP, TERMINAL 6-POLE	1
20	113271	SUPPRESSOR, ARC	2
21	115019	PUSHBUTTON ASSY. GREEN (Beginning with S/N J12073063 and above)	1
22	115018	PUSHBUTTON ASSY. RED (Beginning with S/N J12073063 and above)	1

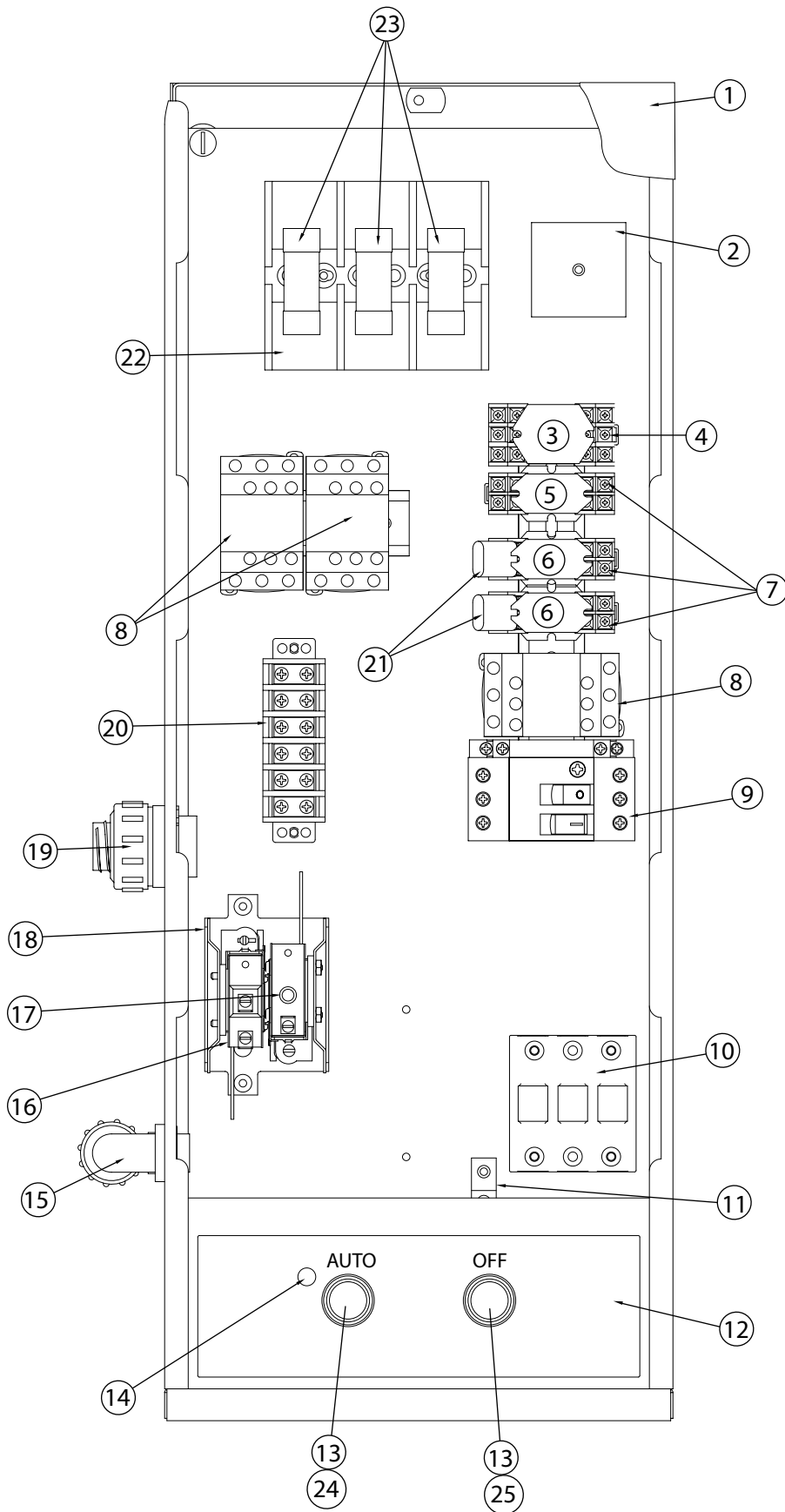
Blower Dryer - Steam Heat



Item No.	Part No.	Description	Qty.
1	110836	FITTING, STRAIGHT 1/2" SEALTITE	1
2	901054	MOTOR, BLOWER 2HP, MV/60/3 (ALL S/N's)	1
---	901055	MOTOR, BLOWER 2HP, 575/60/3 (All S/N's)	1
3	331574	PLATE, DRIVE SIDE CLOSE-OFF	1
4	112033	HOUSING, BLOWER	1
5	111831	IMPELLER, BLOWER 3450 RPM	1
6	112032	CONE, INLET BLOWER	1
7	330771	PLENUM, BLOWER DRYER	1
8	333481	BASE, BLOWER DRYER	1
9	114488	THERMOSTAT, CONTROL	1
10	330611	PLATE, COVER	1
11	111478	BOLT, HEX-HEAD 10-32 X 1/2" SST	2
12	330616-1	COVER, ACCESS	1
13	STEAM INLET PIPING ASSY. (Includes A-E)		
A	109887	VALVE, 3/4" STEAM SOLENOID	1
---	109903	KIT, REPAIR 3/4" SOLENOID VALVE	A/R
---	108516	COIL, 3/4" STEAM SOLENOID VALVE	A/R
B	105803	NIPPLE, CLOSE 3/4" NPT BI	1
C	107502	UNION, ELBOW 3/4" X 90° MALE BI	1
D	105731	ELBOW, STREET 3/4" X 90° BI	1
E	105808	NIPPLE, 3/4" X 2-1/2" BI	1
14	STEAM CONDENSATE PIPING ASSY. (Includes F-K)		
F	105803	NIPPLE, CLOSE 3/4" NPT BI	1
G	105738	ELBOW, RED. 3/4" X 1/2" X 90° BI	1
H	105782	NIPPLE, CLOSE 1/2" NPT BI	2
I	105778	UNION, 1/2" NPT BI	1
J	111380	TRAP, STEAM 1/2" NPT TDC	1
K	112084	NIPPLE, 1/2" X 14-1/2" NPT BI	1
15	100734	BOLT, 1/4-20 X 1/2" HEX HD. SST	8
16	109987	COIL, STEAM	1
17	336637	BRACKET, ADJUSTER MOTOR (ALL S/N'S)	1

NOTE: Motor P/N 111830, Motor P/N 112111, and Bracket P/N 330613 are no longer available.  
 Service Kit P/N 901054 includes Motor P/N 115884 and Motor Bracket P/N 336637)  
 Service Kit P/N 901055 includes Motor P/N 115883 and Motor Bracket P/N 336637)

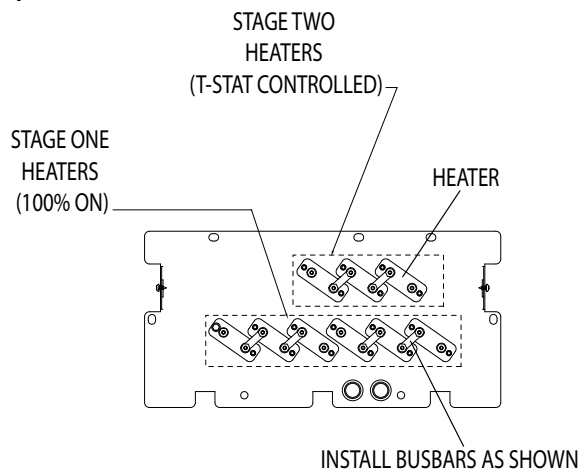
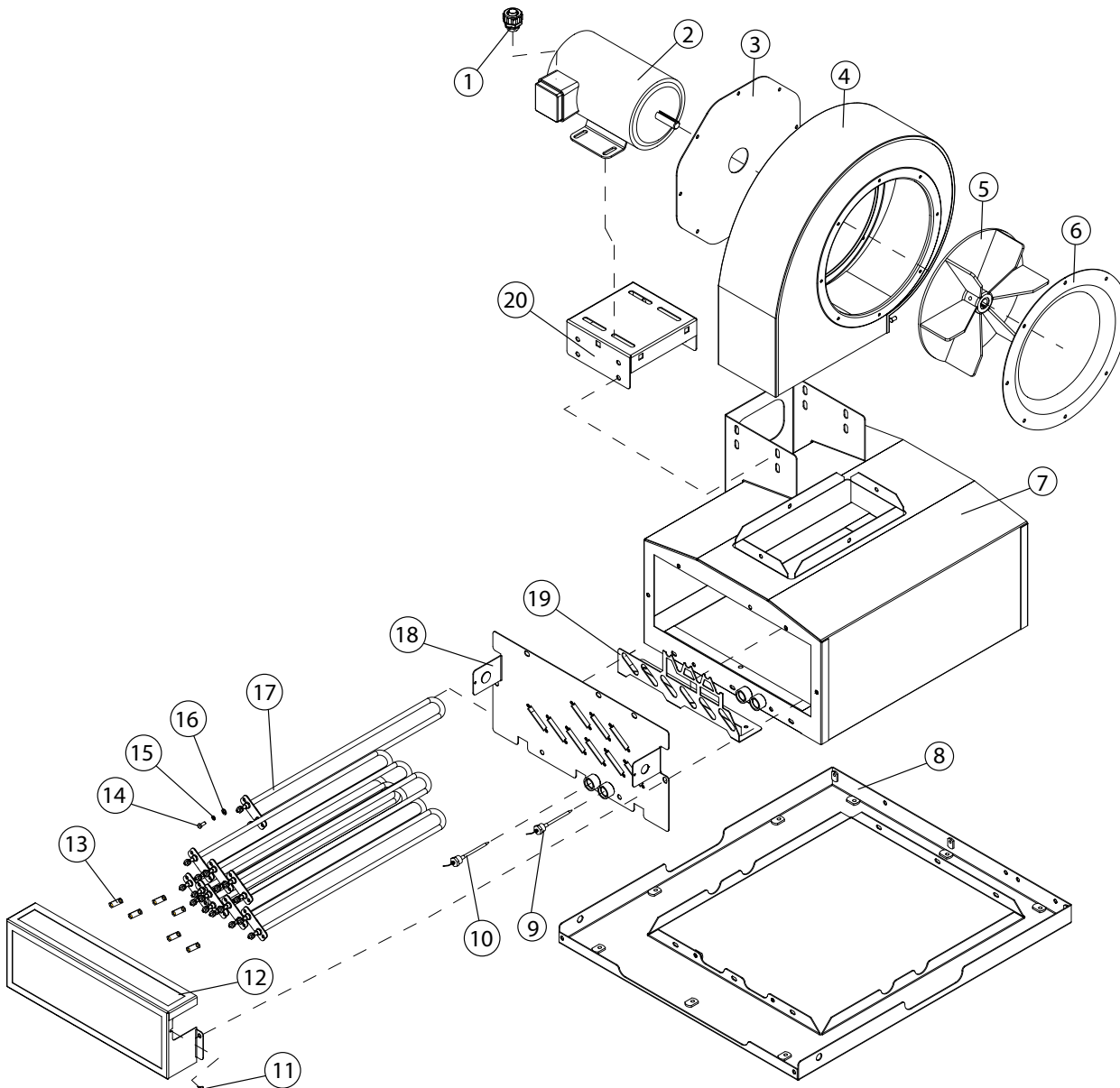
Control Cabinet - Electric Heat



Right to Left Operation Shown

Item No.	Part No.	Description	Qty.
1	333479	COVER, EBD CONTROL CABINET	1
2	114413	TIMER, 30 SECONDS	1
3	112382	RELAY, 3PDT, 10A, 120VAC	1
4	112415	SOCKET, RELAY 3-POLE	1
5	111068	RELAY, 2PDT, 10A 120VAC	2
6	111067	RELAY, 2PDT, 10A 24VAC	2
7	111036	SOCKET, RELAY	3
8	108122	CONTACTOR, 3-POLE 12A	3
9	111629	MOTOR, STARTER, 6-10A, 208/240V/60/3	1
--	111627	MOTOR, STARTER, 2.5-4A, 480/575V/60/3	1
10	111833	BLOCK, TERMINAL 175A, 3-POLE 600V	1
11	103310	LUG, GROUND	1
12	114729	SWITCH, PLATE, AUTO/OFF PLASTIC	1
13*	114910	SWITCH, PIEZO (Prior to S/N J12073063)	2
14	900915	KIT, LIGHT, INDICATOR GREEN 24VDC	1
15	110837	FITTING, ELBOW 1/2" CONDUIT SEALTITE	1
16	114488	THERMOSTAT, CONTROL	1
17	114780	THERMOSTAT, HI-LIMIT, 260°F CUTOFF	1
18	322076	BRACKET, MOUNTING THERMOSTAT	1
19	110919	FITTING, STRAIGHT 1" SEALTITE	1
20	100294	STRIP, TERMINAL 6-POLE	1
21	113271	SUPPRESSOR, ARC	2
22	111135	BLOCK, FUSE 600V, 30A, 3-POLE	1
23	180174	FUSE, 45A, TYPE J, 208-240VAC	3
---	112062	FUSE, 20A, TYPE J 480/575VAC	3
24	115019	PUSHBUTTON ASSY. GREEN (Beginning with S/N J12073063 and above)	1
25	115018	PUSHBUTTON ASSY. RED (Beginning with S/N J12073063 and above)	1

Blower Dryer - Electric Heat

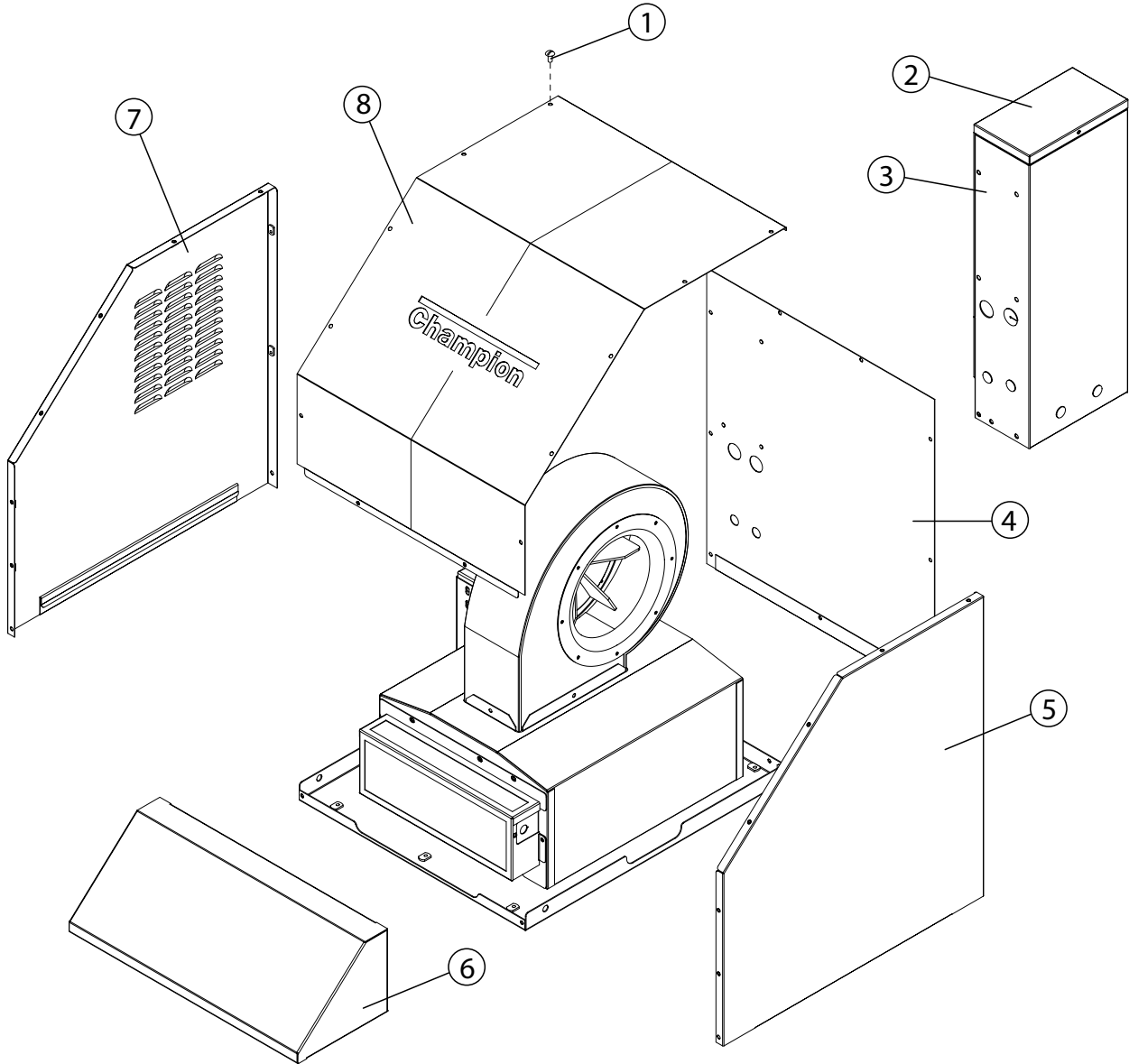


Item No.	Part No.	Description	Qty.
1	110836	FITTING, STRAIGHT 1/2" SEALTITE	1
2	900154	MOTOR, BLOWER 2HP, MV/60/3 (ALL S/N's)	1
-	900155	MOTOR, BLOWER 2HP, 575/60/3 (ALL S/N's)	1
3	331574	PLATE, DRIVE SIDE CLOSE-OFF	1
4	112033	HOUSING, BLOWER	1
5	111831	IMPELLER, BLOWER 3450 RPM	1
6	112032	CONE, INLET BLOWER	1
7	330771	PLENUM, BLOWER DRYER	1
8	333481	BASE, BLOWER DRYER	1
9	114780	THERMOSTAT, FIXED HI-LIMIT	1
10	114488	THERMOSTAT, CONTROL	1
11	112134	SCREW, #10 X 3/8" SELF-TAPPING	2
12	333493	COVER, HEATER	1
13	333494	BUSBAR, COPPER	6
14	111478	BOLT, HEX-HEAD 10-32 X 1/2" SST	18
15	106486	WASHER, LOCK #10 SPLIT SST	18
16	107033	WASHER, FLAT SST	18
17	114787	HEATER, TUBE 1.333 KW, 208V	9
---	114786	HEATER, TUBE 1.333 KW, 480V	9
	-----	HEATER, 1.333KW, 575V	9
18	333492	PLATE, MOUNTING HEATER	1
19	333488	RETAINER, HEATER	1
20	336367	BRACKET, ADJUSTER MOTOR (ALL S/N's)	1

**NOTE:**

Motor P/N 111830, Motor P/N 112111, and Bracket P/N 330613 are no longer available.  
 Service Kit P/N 901054 includes Motor P/N 115884 and Motor Bracket P/N 336637)  
 Service Kit P/N 901055 includes Motor P/N 115883 and Motor Bracket P/N 336637)

Blower Dryer Panels



<b>Item No.</b>	<b>Part No.</b>	<b>Description</b>	<b>Qty.</b>
1	100073	SCREW, 1/4-20 X 1/2" TRUSS HD. SST	41
2	333479	COVER, CONTROL CABINET	1
3	333477-2	CABINET, CONTROL	1
4	333485	PANEL, ENTRANCE (L-R)	1
---	333484	PANEL, ENTRANCE (R-L)	1
5	331561	PANEL, FRONT (R-L) (L-R)	1
6	330566	HOOD, INTAKE	1
7	331565	PANEL, REAR (R-L) (L-R)	1
8	333483	PANEL, TOP (R-L) (L-R)	1

