



a Geberit company

2100 South Clearwater Drive
Des Plaines, IL 60018
Phone: 847-803-5000
Fax: 847-803-5454
www.chicagofaucets.com

REPAIR PARTS

BY: SID DATE: 07-11-06
CHK: *[Signature]* REV: 10-21-14

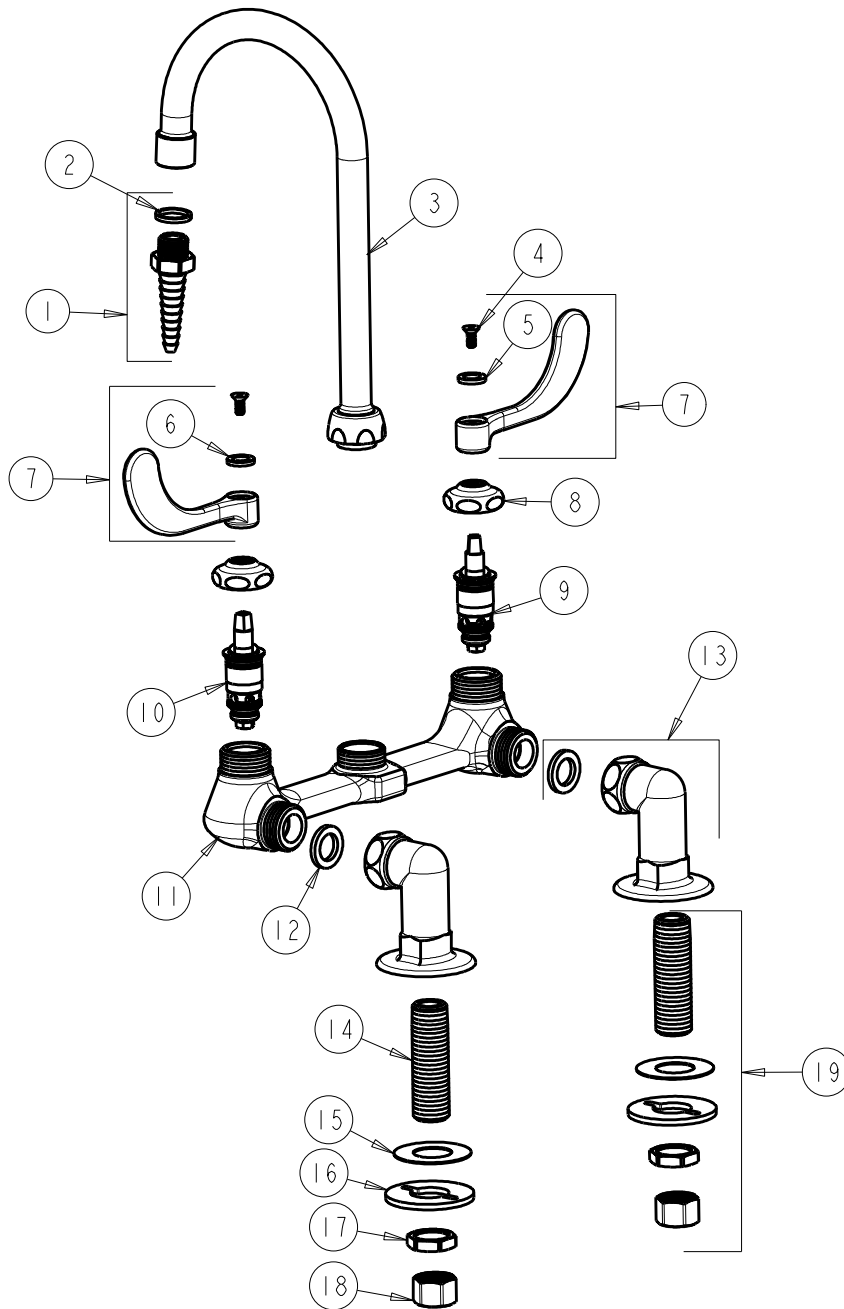
FITTING NO.

946-317CP

SUBMITTED MODEL NO.

ITEM NO.

FOR TECHNICAL ASSISTANCE
1-800-TEC-TRUE (1-800-832-8783)



ITEM	PART NO.	DESCRIPTION	ITEM	PART NO.	DESCRIPTION
1	E7JKCP	SERRATED HOSE NOZZLE	11	----	VALVE BODY (NOT SOLD SEPARATELY)
2	229-003JKABNF	WASHER	12	1-011JKABNF	WASHER, .97 X .62 X .12
3	GN2BJKABCP	SPOUT	13	SSJKABCP	ANGLE SHANK ASSEMBLY w/ WASHER
4	420-020JKNF	SCREW, 1/8 FLAT HEX HEAD X 1/2	14	748-002JKABRBF	INLET SHANK 1/2-NPSM
5	633-023JKNF	INDEX BUTTON (RED)	15	333-103JKNF	RUBBER WASHER
6	633-123JKNF	INDEX BUTTON (BLUE)	16	807-112JKNF	WASHER
7	317-PRJKCP	HANDLE, 4" WRISTBLADE (PAIR)	17	49-004JKRBF	LOCKNUT
8	1-214JKCP	CAP	18	49-005JKRBF	COUPLING NUT
9	1-100XTJKABNF	QUATURN CARTRIDGE (LH)	19	748-002JKABRBF	SHANK ASSEMBLY
10	1-099XTJKABNF	QUATURN CARTRIDGE (RH)			