

**CHICAGO FAUCETS**

a Geberit company

2100 South Clearwater Drive  
Des Plaines, IL 60018  
Phone: 847-803-5000  
Fax: 847-803-5454  
www.chicagofaucets.com

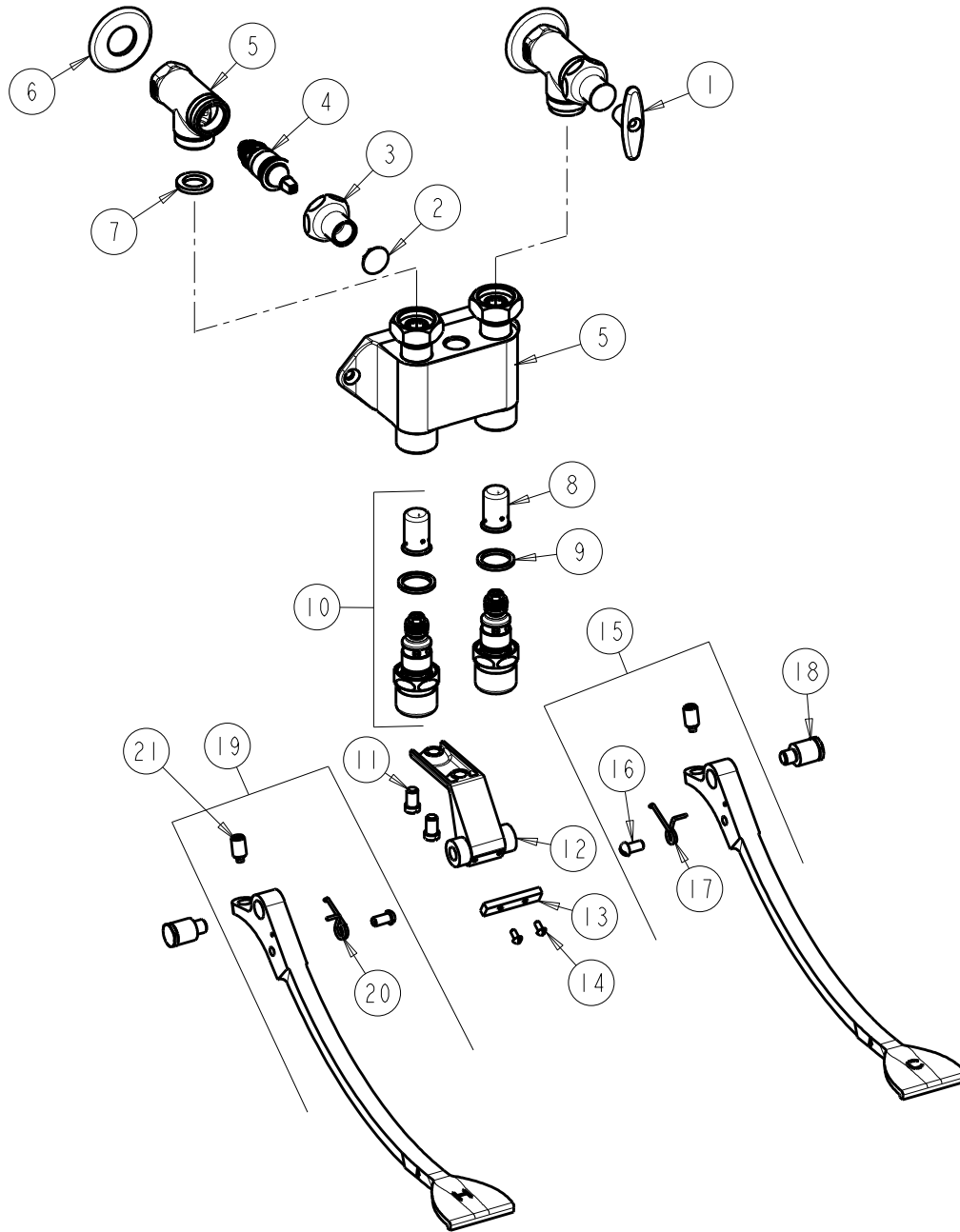
**REPAIR PARTS**

BY: SID DATE: 06-21-11  
CHK: *[Signature]* REV:

FITTING NO.  
**834-EPABCP**  
SUBMITTED MODEL NO.

ITEM NO.

**FOR TECHNICAL ASSISTANCE**  
1-800-TEC-TRUE (1-800-832-8783)



ITEM	PART NO.	DESCRIPTION	ITEM	PART NO.	DESCRIPTION
1	293-006JKRCF	TEE HANDLE (INCLUDES SCREW)	12	834-013JKCP	PEDAL BRACKET
2	1-144JKCP	BUTTON	13	834-012JKNF	PEDAL STOP
3	1-246JKCP	NUT, CAP LOOSE KEY 1-1/8-18 UNEF	14	76-008JKNF	SCREW, ROUND HEAD 6-32
4	217-XTLHJKABNF	CARTRIDGE, SLO-COMPRESSION	15	834-107KJKNF	PEDAL ASSEMBLY (COLD)
5	---	VALVE BODY (NOT SOLD SEPARATELY)	16	173-032JKNF	SCREW, ROUND HEAD 1/4-20 X 1/2
6	417-019JKCP	FLANGE, 1.94 X .88 X .11	17	834-011JKNF	SPRING, RH PEDAL
7	1-011JKNF	WASHER, .97 X .62 X .12	18	625-061JKRCF	BOLT, SHOULDER 3/8-24 UNF X 5/8 HEX
8	333-075JKNF	DASHPOT	19	834-007KJKNF	PEDAL ASSEMBLY (HOT)
9	1-043JKNF	GASKET, CAP 1 X .80 X .09	20	834-010JKNF	SPRING, LH PEDAL
10	625-XJKABNF	FOR PARTS SEE 625-XJKABNF	21	745-025JKNF	SCREW, PEDAL 3/8-24 UNF
11	625-006JKNF	SCREW, PAN HEAD 5/16-18 UNC			