

CHICAGO FAUCETS
a Geberit company

2100 South Clearwater Drive
Des Plaines, IL 60018
Phone: 847-803-5000
Fax: 847-803-5454
www.chicagofaucets.com

REPAIR PARTS

FITTING NO.

782-VB369CP

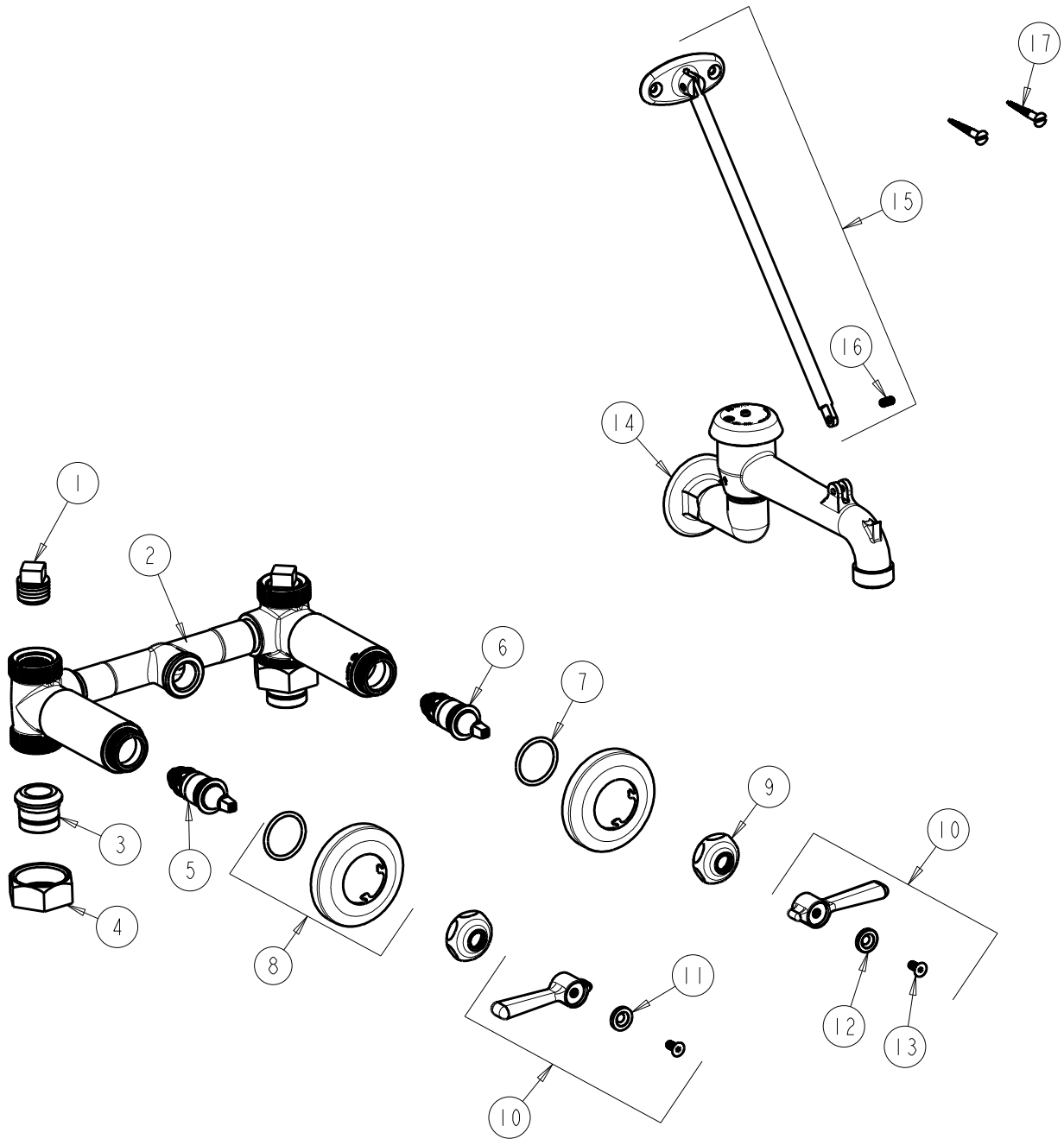
SUBMITTED MODEL NO.

ITEM NO.

BY: SID DATE: 11-16-11

CHK: *SR* REV: 10-02-15

FOR TECHNICAL ASSISTANCE
1-800-TEC-TRUE (1-800-832-8783)



ITEM	PART NO.	DESCRIPTION	ITEM	PART NO.	DESCRIPTION
1	234-032JKABRCF	1/2 NPT PLUG	10	369-PRJKCP	HANDLE, 2-3/8" LEVER (PAIR)
2	-----	VALVE BODY (NOT SOLD SEPARATELY)	11	633-023JKNF	INDEX BUTTON (RED)
3	177-003JKABRBF	UNION TAILPIECE	12	633-123JKNF	INDEX BUTTON (BLUE)
4	177-002JKCP	UNION NUT	13	420-020JKNF	SCREW, 1/8" FLAT HEX HEAD X 1/2"
5	217-XTRHJKABNF	CARTRIDGE, SLO-COMPRESSION (RH)	14	782-001KVBJKCP	VB SPOUT WITH PAIL HOOK
6	217-XTLHJKABNF	CARTRIDGE, SLO-COMPRESSION (LH)	15	897-013JKKCP	BRACE ROD ASSEMBLY
7	5235-107JKNF	O-RING	16	665-116JKNF	SET SCREW
8	633-201JKCP	FLANGE & O-RING	17	173-006JKCP	FLAT HEAD WOOD SCREW
9	1-214JKCP	CAP			