

# PARTS LIST

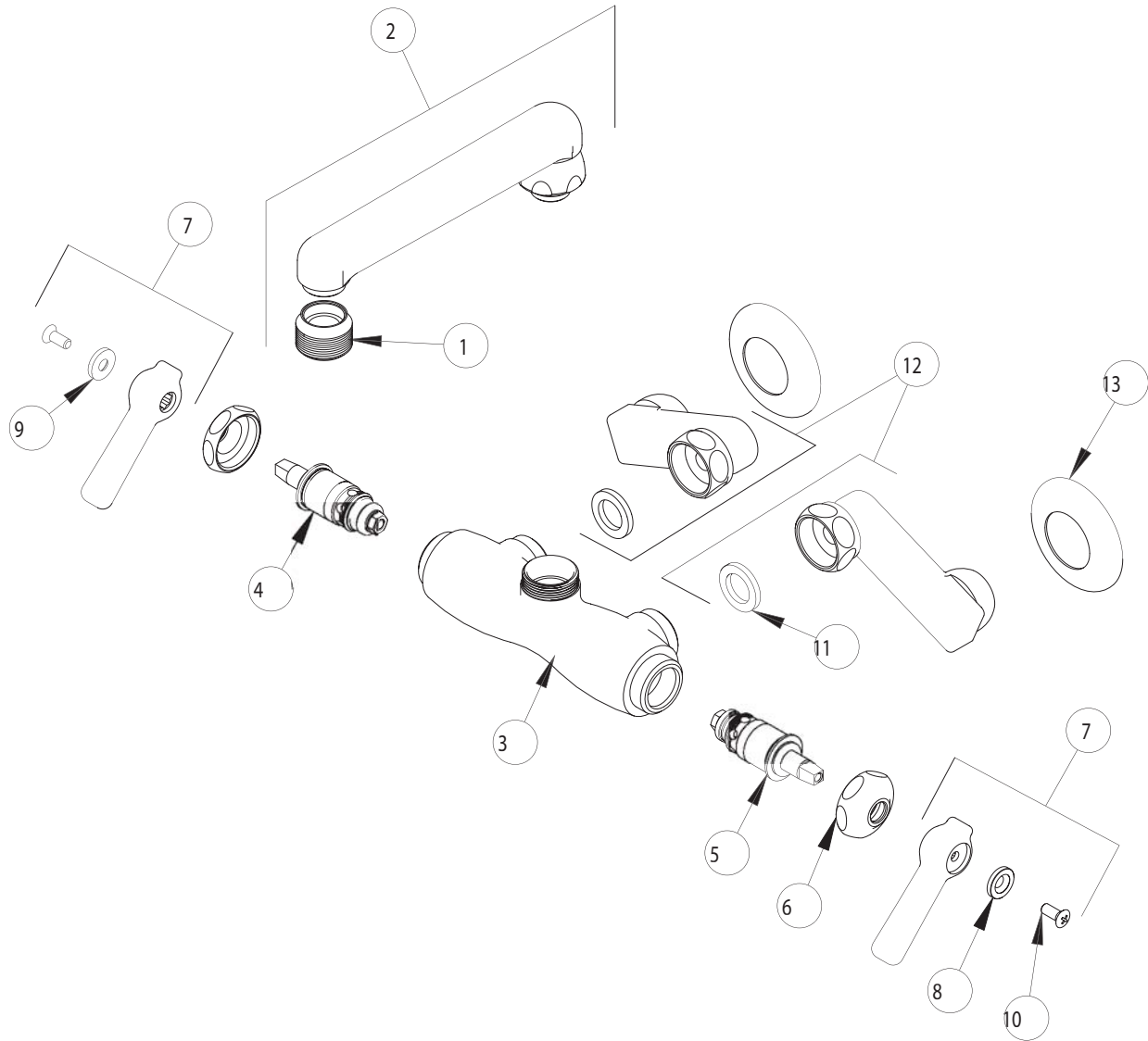
BY: SID  
CHK'D:



FINISH:  
DATE:

AS SPECIFIED  
09-19-01

737



ITEM NO.	PART NO.	DESCRIPTION	ITEM NO.	PART NO.	DESCRIPTION
1	E2	HOSE END OUTLET	8	633-123	INDEX BUTTON (BLUE)
2	S6E2	FOR PARTS SEE S6E2	9	633-023	INDEX BUTTON (RED)
3	-----	VALVE BODY (NOT SOLD SEPARATELY)	10	420-010	SCREW
4	1-100XT	QUATURN UNIT (LH)	11	1-011	WASHER
5	1-099XT	QUATURN UNIT (RH)	12	H	'H' ARM ASSEMBLY w/WASHER
6	1-214	CAP	13	1-055	FLANGE
7	369PR	LEVER HANDLE ASSEMBLY			