



a Geberit company

2100 South Clearwater Drive  
Des Plaines, IL 60018  
Phone: 847-803-5000  
Fax: 847-803-5454  
www.chicagofaucets.com

# REPAIR PARTS

BY: JAR      DATE: 06-29-14

CHK:          REV:

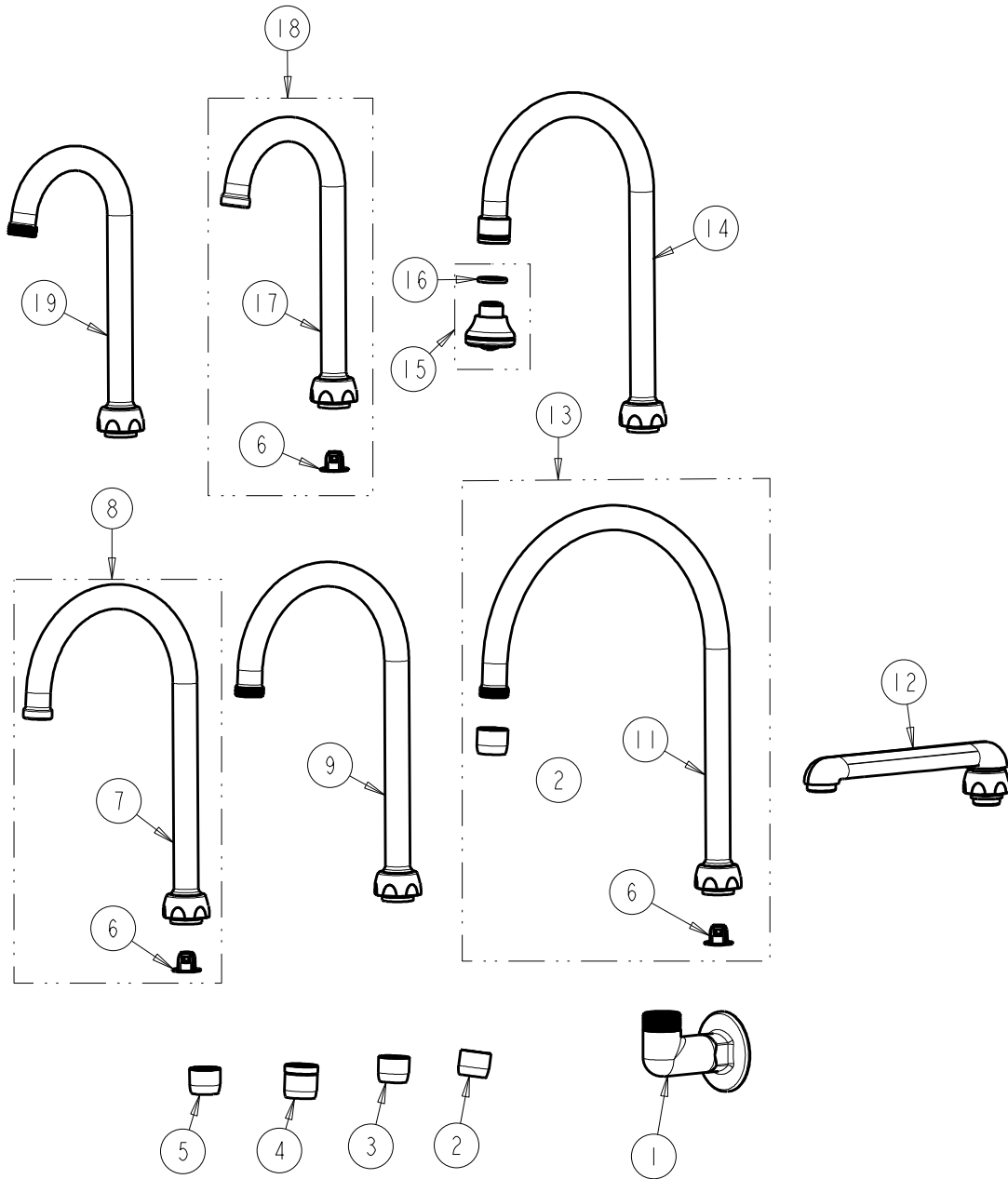
FITTING NO.

**629-AB-SERIES**

SUBMITTED MODEL NO.

ITEM NO.

**FOR TECHNICAL ASSISTANCE**  
1-800-TEC-TRUE (1-800-832-8783)



ITEM	PART NO.	DESCRIPTION	ITEM	PART NO.	DESCRIPTION
1	629-LESAB	VALVE BODY	12	S6LEOJKAB	SPOUT, CAST 6" C-C
2	E3JKABCP	OUTLET, AERATOR 2.2 GPM	13	GN8FCJKABCP	SPOUT, GN 8" C-C w/ 1.5 GPM FC
3	E35JKABCP	OUTLET, AERATOR 1.5 GPM	14	GN2BJKABCP	SPOUT, GN B TYPE END 5-1/4" C-C
4	E29JKABCP	OUTLET, LAMINAR 2.2 GPM	15	E4JKABCP	OUTLET, ROSE SPRAY 1.5 GPM
5	E36JKABCP	OUTLET, LAMINAR 1.5 GPM	16	229-003JKABNF	WASHER
6	50-043KJKABNF	FLOW CONTROL 1.5 GPM	17	GN1JKABCP	SPOUT, GN PLAIN END
7	GN2JKABCP	SPOUT, GN PLAIN END 5-1/4" C-C	18	GN1FCJKABCP	SPOUT, GN PLAIN END w/ 1.5 GPM FC
8	GN2FCJKABCP	SPOUT, GN PLAIN END w/ 1.5 GPM FC	19	GN1AJKABCP	SPOUT, GN 3-1/2" C-C
9	GN2AJKABCP	SPOUT, GN 5-1/4" C-C			
11	GN8AJKABCP	SPOUT, GN 8" C-C			