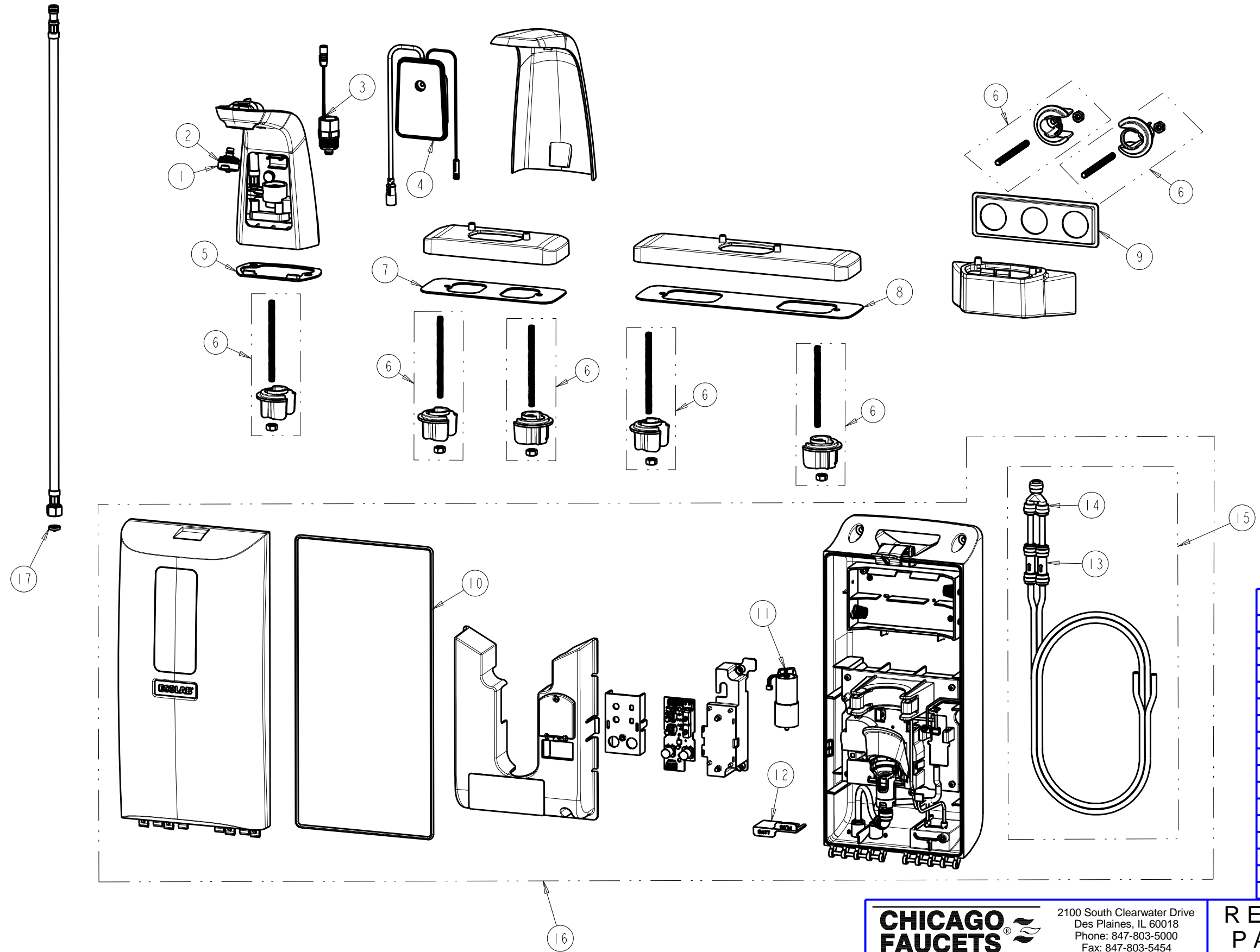


EFS-110
EFS-111
EFS-112
EFS-113
EFS-120
EFS-121
EFS-122
EFS-123



ITEM	PART NO.	DESCRIPTION
1	243.188.AB.1	AERATOR OUTLET ASSEMBLY, 1.3 GPM
2	243.266.00.1	LAMINAR OUTLET ASSEMBLY, 1.0 GPM
3	243.152.AB.1	SOLENOID VALVE, DN5
4	243.190.00.1	MODULE, SENSOR, SYNCRA
5	243.191.00.1	GASKET, CENTER DECK
6	243.195.00.1	FAUCET MOUNTING HARDWARE (1 PER)
7	243.192.00.1	GASKET, 4" DECK PLATE SEAL
8	243.193.00.1	GASKET, 8" DECK PLATE SEAL
9	243.194.00.1	GASKET, WALL BASE 4"
10	243.311.00.1	GASKET, ENCLOSURE DOOR
11	243.185.00.1	AIR PUMP, 6V
12	243.310.00.1	CLIP, HOUSING CONNECTOR
13	243.186.AB.1	CHECK VALVE, 1/4" CONNECT
14	243.187.AB.1	FITTING, WYE, 1/4" PUSH CONNECT
15	243.189.AB.1	TUBING ASSY. (TUBING, CV & WYE)
16	243.182.00.1	LOWER DISPENSER ENCLOSURE
17	3300-005JKABNF	FILTER/SCREEN

CHICAGO FAUCETS
 a Geberit company
 2100 South Clearwater Drive
 Des Plaines, IL 60018
 Phone: 847-803-5000
 Fax: 847-803-5454
 www.chicagofaucets.com

FOR TECHNICAL ASSISTANCE
 1-800-TEC-TRUE (1-800-832-8783)

REPAIR PARTS

BY: SID DATE: 06-08-15
 CHK: AR REV:

FITTING NO.
EFS_SCHEDULE
SUBMITTED MODEL NO.
ITEM NO.