

Side Intake Filtered Air Supply Units

SIS SERIES



FEATURES

- Easy on-site addition of customer supplied air supply duct extension between the intake hood and unit provides additional separation where necessary.
- Filters designed with large surface area for efficient filtration.
- Grey weather resistant baked powder coat finish.
- Weather proof cabinet designed for outdoor roof mounting.
- Flexible forward curved belt drive blowers operate at low speed and low noise levels.
- Heavy duty ball bearings suitable for -65° to +250° F.
- Washable aluminum mesh filter are located in the intake hood (except SIS-20) and are accessible through the hood end cap for ease of service.
- SIS-20 has a drawer type filter section (not illustrated). The SIS-20 intake hood has a screened inlet.

An economical fresh air supply unit designed as a practical method to meet NFPA 96 separation requirements between supply & exhaust air streams in restaurant applications. Also suitable for many other applications, such as schools and apartments.



AVAILABLE WITH MOTORS & DRIVES FACTORY INSTALLED

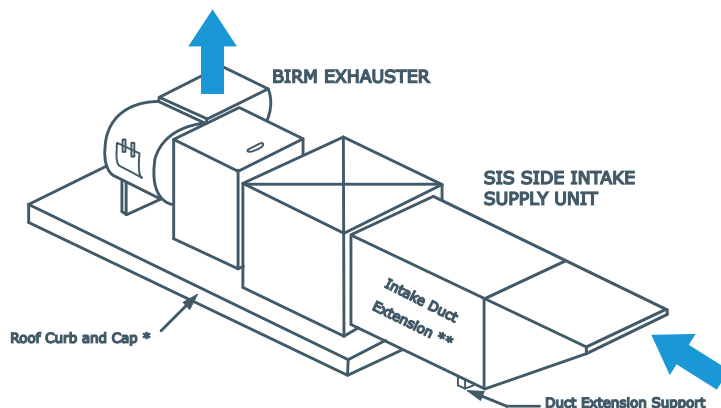
Consult Delair Software for details



EASY TO SERVICE

Latched top cover provides convenient access to motor, pulleys, and belt.

TYPICAL INSTALLATION



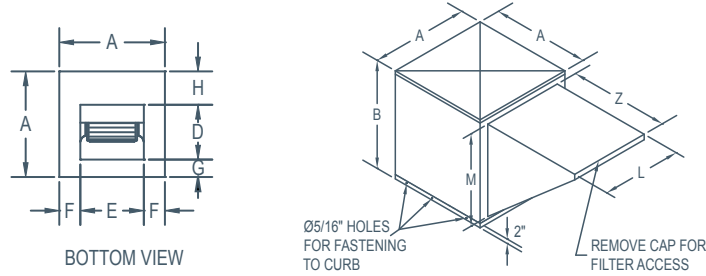
SIS SERIES

Side Intake Filtered Air Supply Units

PERFORMANCE SPECIFICATIONS

MODEL	1/2" SP				1" SP				1 1/2" SP				2" SP				2 1/2" SP				Min HP	Max HP
	CFM	BHP	FEI	FEPact (kW)	CFM	BHP	FEI	FEPact (kW)	CFM	BHP	FEI	FEPact (kW)	CFM	BHP	FEI	FEPact (kW)	CFM	BHP	FEI	FEPact (kW)		
SIS-9	2300	1.36	0.64	1.30	2200	1.48	0.74	1.40	2000	1.47	0.84	1.39	1800	1.45	0.91	1.37	1600	1.45	0.96	1.37	1/4	1 1/2
SIS-10	2700	1.46	0.67	1.38	2400	1.42	0.79	1.35	2200	1.49	0.87	1.41	1900	1.40	0.96	1.33	1700	1.44	0.99	1.37	1/4	1 1/2
SIS-12	3600	1.94	0.62	1.80	3300	1.98	0.75	1.83	2900	1.90	0.86	1.76	2600	1.96	0.91	1.81	2100	1.94	0.88	1.80	1/4	2
SIS-15	5300	2.98	0.61	2.68	4800	2.88	0.74	2.59	4400	2.90	0.85	2.61	3900	2.91	0.90	2.62	3500	3.00	0.92	2.70	1/2	3
SIS-18	8300	4.95	0.60	4.33	7700	4.86	0.73	4.26	7100	4.97	0.81	4.35	6500	4.93	0.89	4.32	5800	4.94	0.93	4.32	1/2	5
SIS-20	12500	9.91	0.46	8.45	11700	9.83	0.56	8.38	11000	9.89	0.64	8.43	10300	9.94	0.71	8.48	9500	9.90	0.76	8.48	2	10

Power rating (BHP) does not include transmission losses. Performance certified is for installation type B: Free inlet, Ducted outlet. Performance ratings do not include the effect of appurtenances (accessories).



DIMENSIONS

MODEL	A	B	D	E	F	G	H	L	M	Z	FILTERS		*INSIDE CABINET	UNIT WEIGHT (LBS) (without motors & drives)
											SIZE	QUANTITY		
SIS-9	24 3/8"	19 3/8"	10 1/4"	11 13/16"	6 9/32"	7 1/16"	7 1/16"	19 1/4"	16 9/16"	21 1/4"	16" x 24" x 1"	1	24"x 24"	70
SIS-10	28 3/8"	21 3/8"	11 3/8"	13 1/8"	7 5/8"	8 1/2"	8 1/2"	20 1/2"	18 9/16"	25 3/4"	15" x 20" x 1"	2	28"x 28"	87
SIS-12	32 3/8"	24 5/8"	13 7/16"	15 5/8"	8 3/8"	9 15/32"	9 15/32"	25 3/8"	21 9/16"	30 3/4"	20" x 25" x 1" & 16" x 25" x 1"	1 & 1	32"x 32"	117
SIS-15	36 3/8"	28 3/8"	15 7/8"	18 5/8"	8 7/8"	8"	12 1/2"	31 3/16"	25 13/16"	33 1/2"	20" x 28 1/2" x 1"	2	36"x 36"	175
SIS-18	36 3/8"	42 1/2"	18 7/8"	21 7/8"	7 1/4"	6 1/4"	11 1/4"	35 5/8"	32 11/16"	40 1/4"	20" x 25" x 1" & 16" x 25" x 1"	2 & 2	36"x 36"	262
SIS-20	44 3/8"	49"	24 3/4"	24 3/4"	9 13/16"	5 3/16"	14 7/16"	38 5/8"	35 9/16"	45 1/2"***	20" x 25" x 1"	6	44"x 44"	497

* Curb size to be smaller than inside cabinet to allow for flashing and roofing.

** Includes filter section.

ACCESSORIES

- V-Cap
- Bolted Clean Out Door
- Heat Slinger
- Vibration Isolators
- Shaft Seal
- Corrosion Resistant Coating
- Aluminum Wheel
- Back Draft Dampers
- Inlet & Outlet Screens
- 2" Drain Fitting



SCAN TO VIEW FEI CHARTS



SCAN TO USE DELAIR SOFTWARE



Canarm certifies that the SIS Series shown herein are licensed to bear the AMCA Seal. The ratings shown are based on tests and procedures performed in accordance with AMCA Publications 211 & 311 and comply with the requirements of the AMCA Certified Ratings Programme.

The AMCA certified ratings seal applies to air and sound performance only. The 700 Series shown herein are not approved by AMCA for FEI ratings. May 2026

Options & Accessories



BACKDRAFT DAMPERS

- Fits the outlet of all 200, 400, 600, 9200 and BI Series Utility Blowers.
- Constructed of 16 ga. aluminum.
- Gravity activated.
- Easily field installed.



INLET SCREENS

- Fits all single outlet 400, 600 and BI Series Utility Blowers.
- Round inlet screens mount on the inlet collars of the blowers.
- Easily field installed.



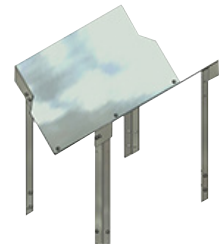
OUTLET SCREENS

- Fits all single inlet 400, 600 and BI Series Utility Blowers.
- Rectangular outlet screens mount over the square outlet of the units.
- Easily field installed.



BOLTED CLEAN OUT DOOR

- Allows easy access for inspection and cleaning of the wheel & housing.
- A tight pattern of bolts holds the gasketed door in place on the curved face of the scroll shaped wheel housing.



V CAP

- For BI upblast utility sets to reduce rain and snow entry.
- Easily field installed above the blower outlet.



HEAT SLINGER

- Cast aluminum disk with radial blades, split for easy field installation on the shaft between the housing and the inboard bearing.
- Can be used on Canarm BI/600 units.
- Provides protection for the bearing from excessive heat. The slinger dissipates heat from the shaft before reaching the bearing and increases the air flow across the inboard bearings.
- Good for a maximum of 400° Fahrenheit air stream temperature.



SHAFT SEAL

- Good for a maximum of 220° Fahrenheit.
- Prevents migration of fumes, grease vapors, dust etc from the airstream into the compartment housing motors, drives and bearings.
- Can be used on Canarm's BI/600 Utility units.
- Easily field installed.
- Installed on the shaft between the bearing plate and back panel in the motor compartment.
- Constructed of 1/4" thick polyethylene for a good seal and resistance to many substances.



DRAIN FITTING

- Large, 2" diameter threaded pipe fitting resists clogging.
- Can be connected to a drainage system if desired.
- Factory welded in place, prior to painting.
- Also available separately.



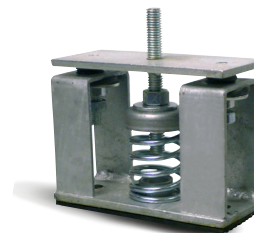
VIBRATION ISOLATORS RUBBER

- Reduces vibration transmission to floors or roof surfaces.
- Suitable for indoor and outdoor use.



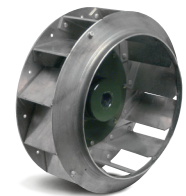
VIBRATION ISOLATORS SPRING

- Reduces vibration transmission to floors or roof surfaces.
- Suitable for indoor use only.



VIBRATION ISOLATORS OUTDOOR SPRING

- Reduces vibration transmission to floors or roof surfaces.
- Designed for outdoor use. Housed to resist lateral motion from winds.

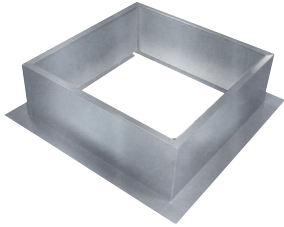


ALUMINUM WHEEL

- For use with the BI & BI-RM series units.
- AMCA type B classification for spark resistant construction

Options & Accessories Roof Curbs

NON-VENTED FOR 300, 700, SIS, ALX, SB-SBRM & SD-SDUB SERIES



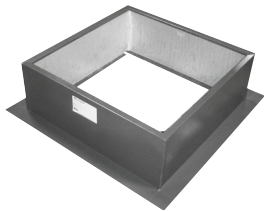
RCG ROOF CURB

- RCG are 18" high, RCGL are 12" high
- 18 gauge galvanized steel construction
- 1 3/4" flanges
- Insulated curbs available (RCGI or RCGLI)
- Shipped fully assembled

Please note Galvanized Curbs (RCG's) are for UL705 only. For UL762 the curb must be vented and be a minimum of 40" from roof to outlet - use RCGV curbs (below)

Part # (Non-Insulated)	Part # (Insulated)	Curb OD Dimension sq	Curb fits Models
RCG17.5 / RCGL17.5	RCGI17.5 / RCGLI17.5	17.5"	ALX105, ALX120, SD-SDUB-10, SD-SDUB-12
RCG18.5 / RCGL18.5	RCGI18.5 / RCGLI18.5	18.5"	307
RCG19.5 / RCGL19.5	RCGI19.5 / RCGLI19.5	19.5"	ALX135, ALX150, SB-SBRM-13, SD-SDUB-30, SD-SDUB-33, SD-SDUB-50, ALX105-C2, ALX120-C2
RCG22.5 / RCGL22.5	RCGI22.5 / RCGLI22.5	22.5"	309,709,SIS-09
RCG23.25 / RCGL23.25	RCGI23.25 / RCGLI23.25	23.25"	ALX165, SB-SBRM-15, SD-SDUB-85, ALX135-C2, ALX150-C2, ALX180-C2
RCG26.5 / RCGL26.5	RCGI26.5 / RCGLI26.5	26.5"	ALX180, SIS-10, SB-SBRM-18, ALX165-C2
RCG30.5 / RCGL30.5	RCGI30.5 / RCGLI30.5	30.5"	312,712,715, SIS-12, SIG-12, SIG-15
RCG31.5 / RCGL31.5	RCGI31.5 / RCGLI31.5	31.5"	ALX210, ALX245, SB-SBRM-24
RCG34.5 / RCGL34.5	RCGI34.5 / RCGLI34.5	34.5"	315,718,SIS-15,SIS-18
RCG38.5 / RCGL38.5	RCGI38.5 / RCGLI38.5	38.5"	318, SB-SBRM-30, ALX210-C2, ALX245-C2, ALX300
RCG42.5 / RCGL42.5	RCGI42.5 / RCGLI42.5	42.5"	SIS-20, ALX360, SB-SBRM36

NON-VENTED FOR RTA, RB & RD SERIES



- 16 gauge galvanized or painted steel construction
- RC are insulated, painted, with 3" flanges and damper shelf
- RCG are non-insulated, galvanized, with 1 3/4" flanges
- RCGI are insulated, galvanized, with 1 3/4" flanges
- All are 10 1/4" high
- Shipped fully assembled

ROOF CURBS FOR RTA, RB & RD SERIES (Non-vented) 10 1/4" High

Part # Painted	Part # Galv (Non-Insulated)	Part # Galv (Insulated)	Curb OD Dimension sq	Curb fits Models
RC18	RCG21.625	RCGI21.625	21.6"	RTA18
RC24	RCG29.125	RCGI29.125	29.1"	RTA-RB-RD24
RC30	RCG35.125	RCGI35.125	35.1"	RTA-RB-RD30
RC36	RCG41.125	RCGI41.125	41.1"	RTA-RB-RD36
RC42	RCG47.125	RCGI47.125	47.1"	RTA-RB-RD42-RTASH
RC48	RCG53.125	RCGI53.125	53.1"	RTA-RB-RD48-RTASH
RC54	RCG59.125	RCGI59.125	59.1"	RTA-RB54-RTASH
RC60	RCG67.125	RCGI67.125	67.1"	RTA-RB60

VENTED FOR ALX, SB-SBRM & SD-SDUB SERIES



RCGV ROOF CURB

- UL762 requires vents and minimum 40" from roof to outlet
- Curb height varies to meet UL762 (see table)
- RCGV are 18" high, RCGVL are 12" high
- RCGVH vary to meet UL762
- 18 gauge galvanized steel construction
- 1 3/4" flanges
- Non-insulated & shipped fully assembled

Part #	Part #	UL762 Curb Height	Curb OD Dimension sq	Curb Fits Models
Vented 18" high (RCGV) Vented 12" high (RCGVL)	To Meet UL762			
RCGV17.5 / RCGVL17.5	RCGVH17.5	27"	17.5"	ALX105, ALX120, SD-SDUB-10, SD-SDUB-12
RCGV19.5 / RCGVL19.5	RCGVH19.5	25"	19.5"	ALX135, ALX150, SB-SBRM-13, SD-SDUB-30, SD-SDUB-33, SD-SDUB-50, HRE-13, ALX105-C2, ALX105-C2
RCGV23.25 / RCGVL23.25	RCGV23.25	18"	23.25"	ALX165, SB-SBRM-15, SD-SDUB-85, HRE-16, ALX135-C2, ALX150-C2, ALX180-C2
RCGV26.5 / RCGVL26.5	RCGV26.5	18"	26.5"	ALX180, SB-SBRM-18, HRE-20, ALX165-C2
RCGV31.5 / RCGVL31.5	RCGV31.5	18"	31.5"	ALX210, ALX245, SB-SBRM-24, HRE-24
RCGV38.5 / RCGVL38.5	RCGV38.5	18"	38.5"	SB-SBRM-30, ALX210-C2, ALX245-C2, ALX300

Options & Accessories Disconnect Switches



**EL1/3-25A
MOISTURE RESISTANT SWITCH**

Single or Three Phase
Moisture resistant, IP65
25 Amps, 3 Poles

HP Ratings
120V AC - 3hp
240V AC - 7.5hp
480V AC - 15hp
600V AC - 20hp



**DS1/3-30A
DISCONNECT SWITCH**

Single or Three Phase
Disconnect NEMA 3R (3030D)
30 Amps, 3 Poles

HP Ratings
120V AC - 3hp
240V AC - 7.5hp
480V AC - 15hp
600V AC - 20hp



**KG1-2P1PH
TOGGLE SWITCH**

Single Phase, Non-reversing,
toggle operation NEMA 1
(2510KG1)
30 Amps, 2 Poles

HP Ratings
120V AC - 2hp
240V AC - 2hp
480V AC - 2hp



**8890-5426-1
TOGGLE SWITCH WITH PILOT LIGHT**

15 Amps, 2 Poles

HP Ratings
120V AC - 0.5hp



**8890-54522-W
TOGGLE SWITCH**

20 Amps, 2 Poles

HP Ratings
120V AC - 1hp
240V AC - 2hp



**8890-MS403
TOGGLE SWITCH**

40 Amps, 3 Poles

HP Ratings
120V AC - 7.5hp
240V AC - 15hp
480V AC - 20hp
600V AC - 40hp



**8890-N13NC
SWITCH ENCLOSURE
WITH LOCKOUT**

NEMA 1 Steel switch